

Workflow 1: Using the GEOPAK Earthwork Input File

1. Copy the standard input file "CFL_earthwork.inp" into the project's GEOPAK working directory and change the file name to reflect the project.
2. Open the input file using a text editor. Modify the project specific data (cross section design file, ascii text output file name, baseline, job number, begin and end station).

```

tolerance = 0.003
vertical search distance = 250

xs dgn = N:\CFL-DPIT\earthwork\training\cadd\xse training.dgn

Existing Ground Line
soil type = ROADWAY EXC

```

Fig. 12-2: Cross Section design file

```

/* Add accum adj vol column */

write column based ascii file = erwk.txt

/* Column B in new Grading Summary */
/* roadway prism excavation unadjusted */

```

Fig. 12-3: ASCII text output file

```

/* Centroid Adjustment */

Process Earthwork for Baseline = bcra
job number = 001

beg sta = 510+040 r 1
end sta = 511+580 r 1

```

Fig: 12-4: Baseline, job number and station ranges

3. Open the cross section design file. Select *Applications>GEOPAK ROAD>Cross Sections>Process Cross Sections*, or select the process cross sections button  from the GEOPAK Road toolbar.

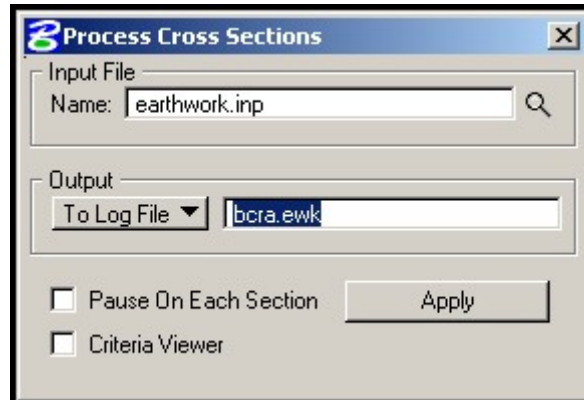



Fig: 12-5: Input file and earthwork report selection

4. Use the browse tool  to select the earthwork input file created in steps 2 and 3.
5. Rename the earthwork log file output name using the file extension “.ewk” to differentiate this earthwork report from other log files. This file will be used to check imported data in Excel. Select “Apply”.