



Workflow 2: Access Cross Section Reports

1. While in the cross section file, open the Project Manager Workflow Dialog Box.
2. The Reports & XS Quantities button is located at the bottom right.

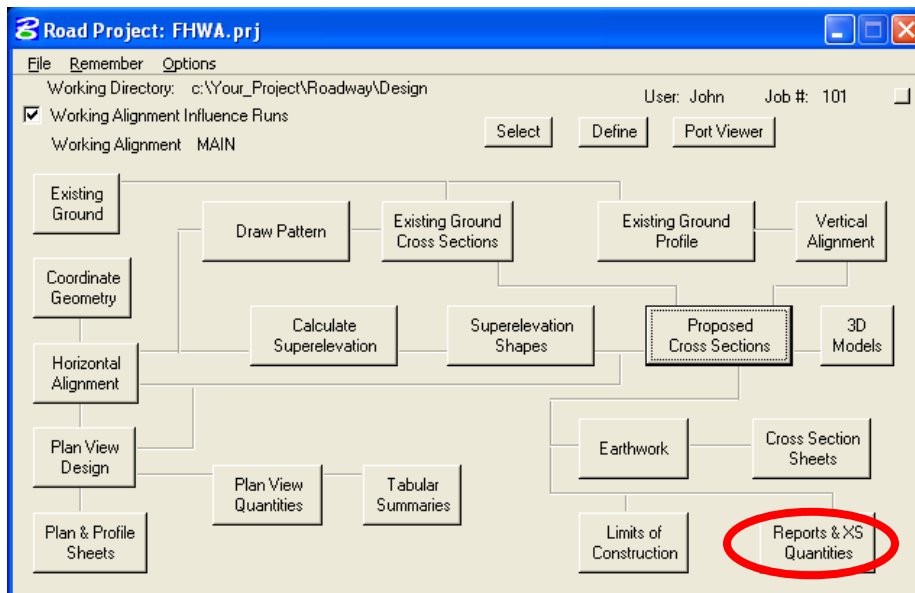


Figure 11-15: Accessing Reports from Project Manager Workflow Dialog



3. The XS Reports dialog box will appear.

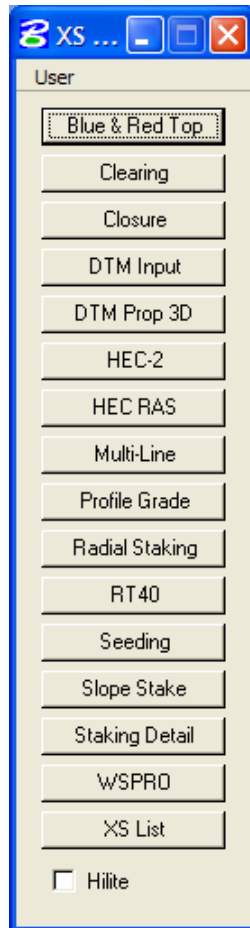


Figure 11-16: Reports Dialog Box

Alternatively, reports may be accessed outside of Project Manager Workflow Dialog Box by selecting **Applications>GEOPAK ROAD>Cross Sections>Reports**.