



## Workflow 3: Calculating “Area” Quantities

1. *Highlight the item you want to calculate, and then select the Shape button on the menu bar.*

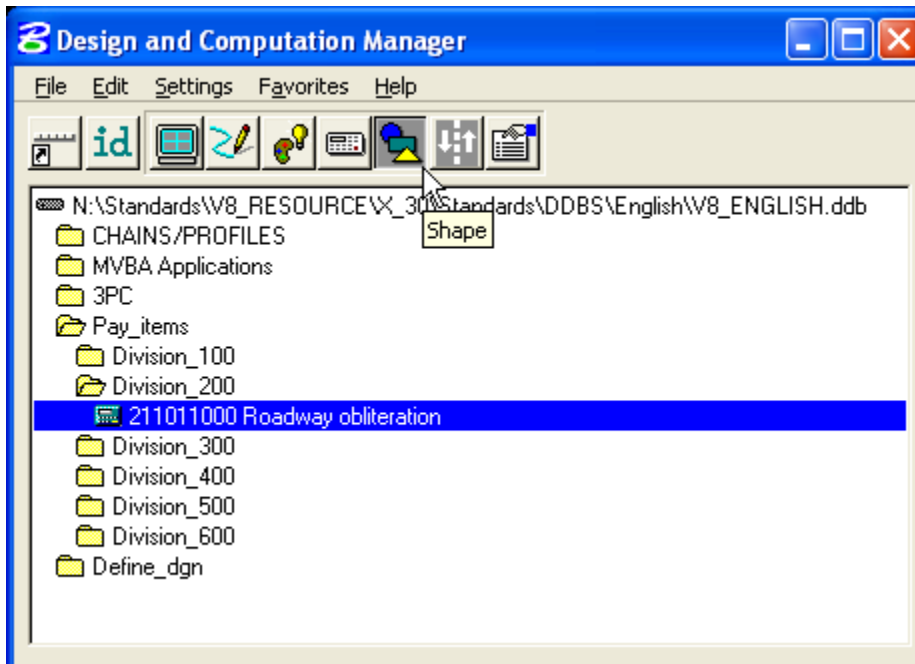


Figure 10-14: Place Shape Icon

2. *The following dialog box will come up.*

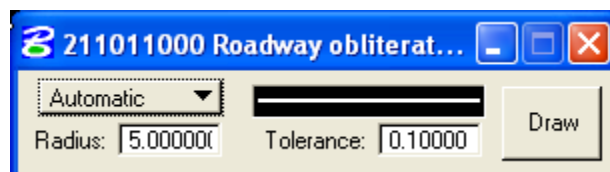


Figure 10-15: Place Shape Dialog

*The correct level symbology will be automatically input. The Automatic button has three choices: Semi-auto, Automatic, and Exclusive. Semi-auto will allow you to pick the items you want to create the shape with, Automatic will create a shape around a point that you pick inside your area, and exclusive will create a shape where you want to exclude an area such as a planter in the sidewalk.*

3. *The two methods that you can use are Automatic and Exclusive. Exclusive is used when there is a deduction from the area, for example a planter in the middle of a sidewalk. Automatic is used when there is no need for deduction. The easiest method is Automatic; the tolerance and radius values can be adjusted if automatic is not working. Pick Draw and pick a data point in the middle of the area that you want the shape in. GEOPAK will draw*



*the shape. When you pick draw with Exclusive, GEOPAK will prompt you to pick a data point inside the outside shape. Once you pick that data point, GEOPAK will highlight the outer shape and then prompt you to pick inside the inner shape to deduct. Once that data point is selected, GEOPAK will draw the shape with the hole in it.*

4. *Once the shape has been created, go back to Plan Quantity Computation dialog box. Double click to select the item you want calculated.*

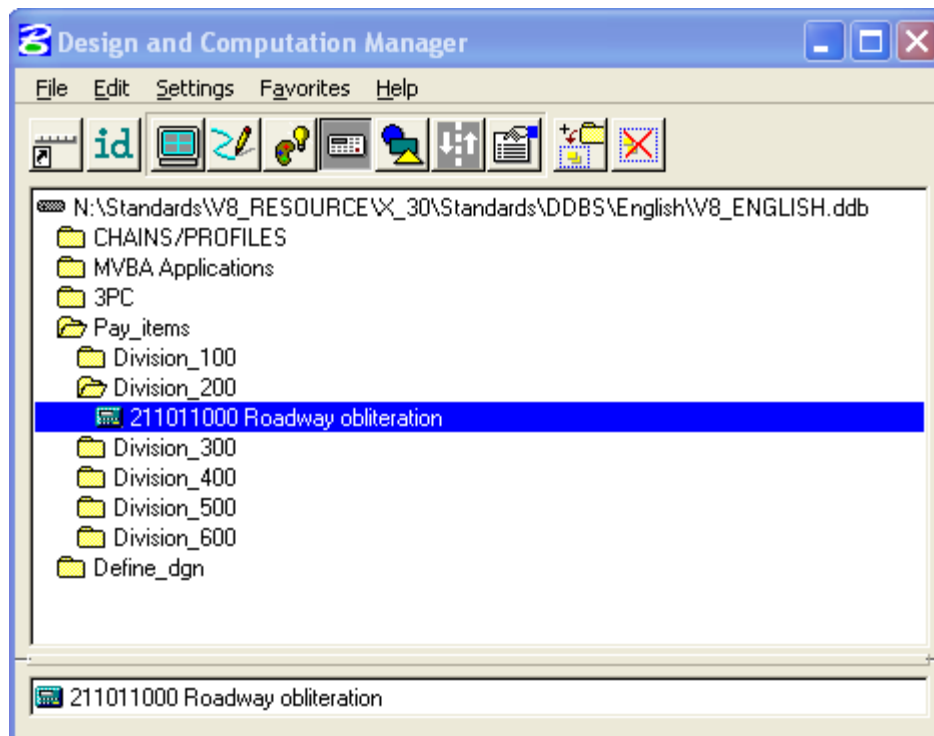


Figure 10-16: Item Selection

5. *Select Compute Quantities.*

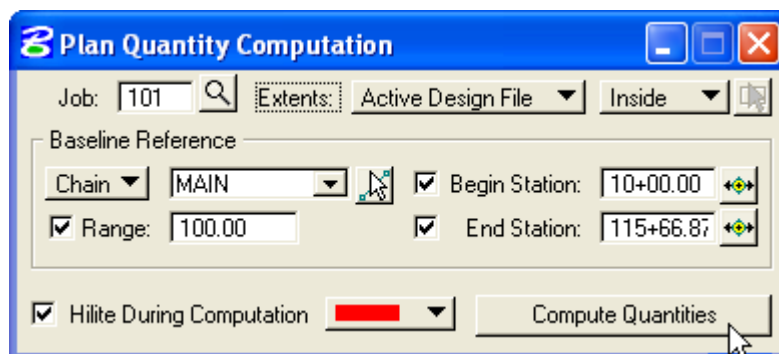


Figure 10-17: Compute Dialog



6. The following dialog box will appear.

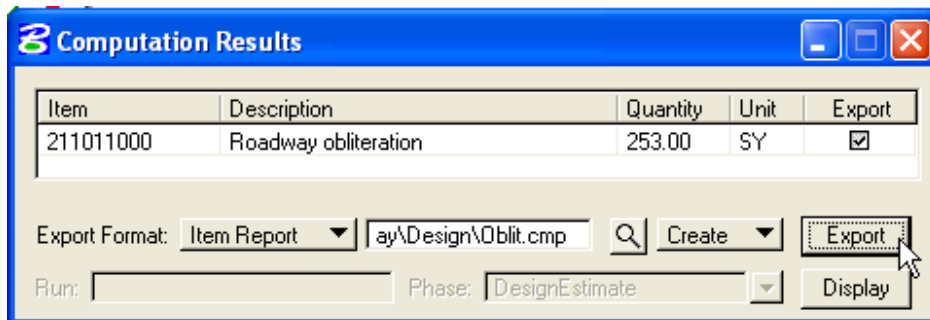


Figure 10-18: Computation Results

7. Change the Output to Item Report and select Export. The following report will be produced.

Item No.	Description	Unit	Quantity
211011000	Roadway obliteration	SY	253.000

Figure 10-19: Output