



Workflow 2: Calculating “Linear” Quantities

1. *Select item or items that you want calculated using the D & C Manager item list.*

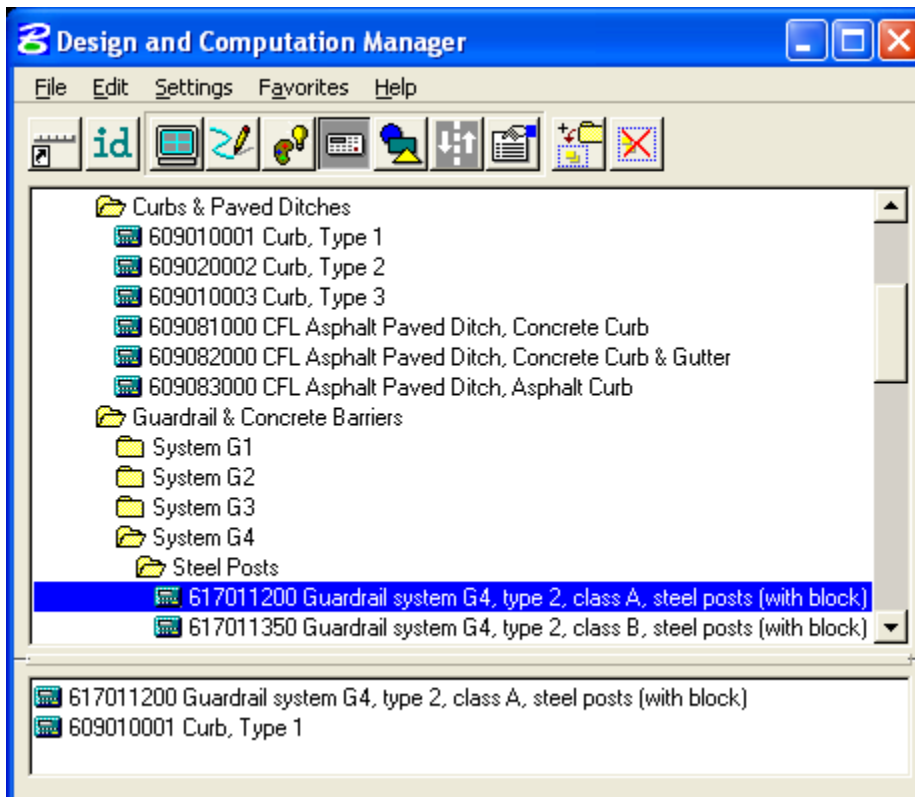


Figure 10-10: Multiple Item Selection

2. *Make sure the Job Number and Chain Name are correct. Set the Extents to View, Fence, or Active Design File. Select Compute Quantities.*

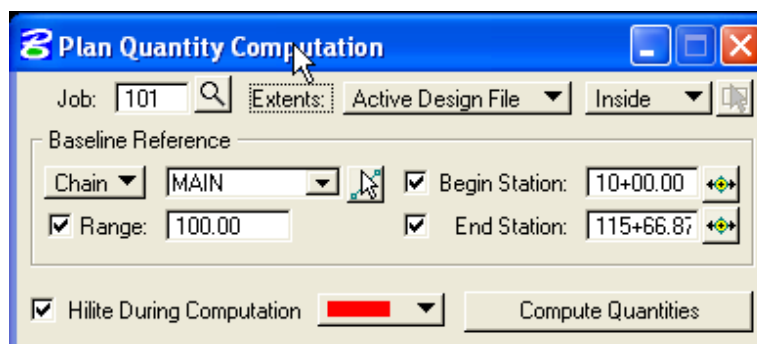


Figure 10-11: Compute Dialog

3. *This will bring up the following dialog box:*

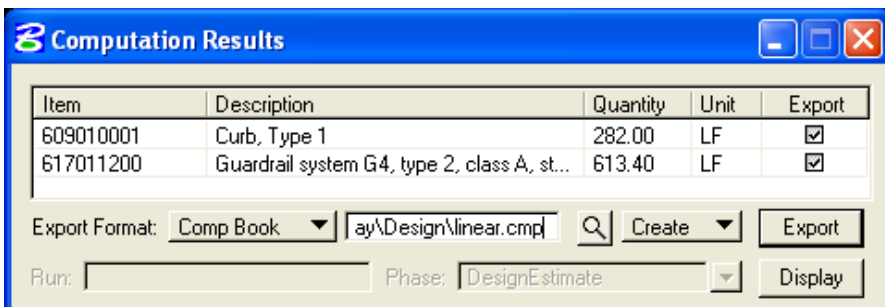


Figure 10-12: Computation Results

4. Set Export Format to *Comp Book* and add a file name. Select *Export* to get the following output file:

Date: 4/25/2006 10:55:22 AM													Page No. 1	
LINEAR MEASUREMENT COMPUTATION														
Pay Item No. 609010001 Unit:LF File Name: c:\Your_Project\Roadway\Design\linear.cmp														
Pay Item Name: Curb, Type 1														
[B E G I N]			[E N D]			[O R I G I N A L]			[F I N A L]			Over/Under	Remarks	
Baseline	Station	Offset	Station	Offset	Gross Length	Deduct	Net Length	Gross Length	Deduct	Net Length	Run			
MAIN	12+37.72	12.00	13+72.65	16.11	136.00	0.00	136.00							
MAIN	12+64.32	-27.27	14+12.16	-20.89	146.00	0.00	146.00							
Totals Unit:LF						282.00	0.00	282.00						
Date: 4/25/2006 10:55:22 AM													Page No. 2	
LINEAR MEASUREMENT COMPUTATION														
Pay Item No. 617011200 Unit:LF File Name: c:\Your_Project\Roadway\Design\linear.cmp														
Pay Item Name: Guardrail system G4, type 2, class A, steel posts (with block)														
[B E G I N]			[E N D]			[O R I G I N A L]			[F I N A L]			Over/Under	Remarks	
Baseline	Station	Offset	Station	Offset	Gross Length	Deduct	Net Length	Gross Length	Deduct	Net Length	Run			
MAIN	17+83.87	-21.33	20+74.13	-8.37	301.15	0.00	301.15							
MAIN	18+83.63	18.96	22+09.21	27.46	312.25	0.00	312.25							
Page Totals Unit:LF						613.40	0.00	613.40						
Totals Unit:LF						613.40	0.00	613.40						

Figure 10-13: Output



Notice that in the example above, multiple quantities were calculated at once. You can add the items that you need calculated in the collection box by double clicking on it. If you want to remove an item from the collection box, simply double click on it in the collection box.