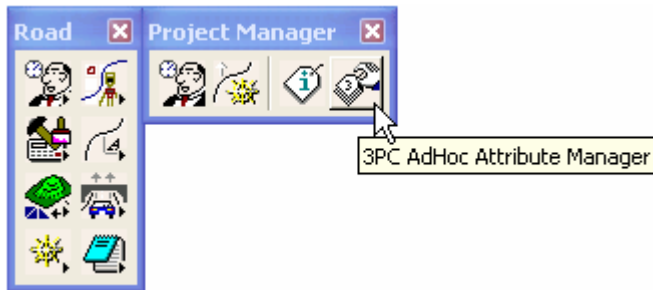


Topic: Attribute Display Filter

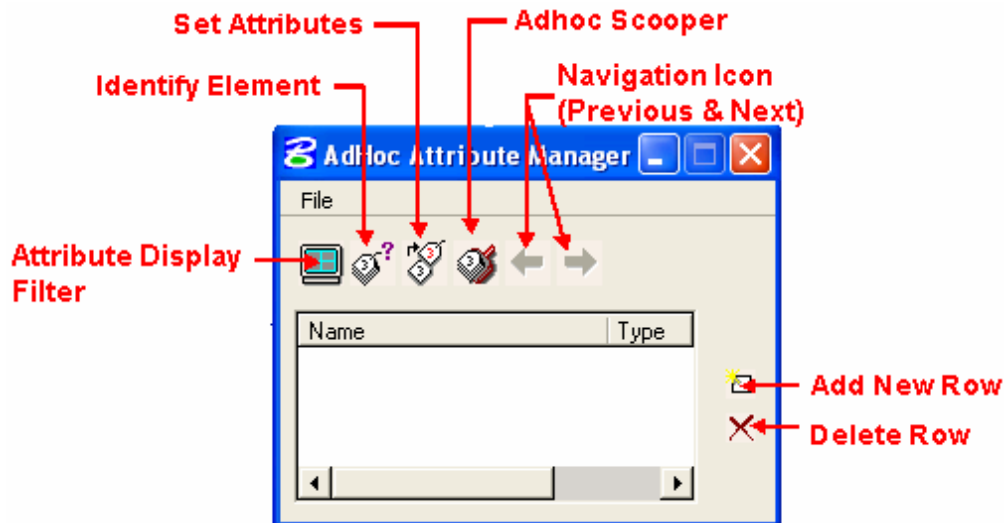
The Attribute Display Filter enables to query and display the Adhocs attached to various MicroStation elements. Once the elements are filtered, those matching the filter can be used to create a selection set. Attribute Display Filter can be found in the Adhoc Attribute Manager dialog box.

Adhoc Attribute Manager

The Adhoc Attribute Manager can be used to attach, review and modify existing Adhoc attributes created through the use of D&C Manager. Select the Adhoc Attribute Manager by **Applications > Geopak Road > Geopak 3PC Adhoc Attribute Manager** or by selecting from the **Project Manager Tool box**:



The Adhoc Attribute Manager icons are as noted below:



Adding a new row and deleting a row are not recommended for CFLHD users. Adhocs used at CFLHD through the D&C Manager are linked to the FLH criteria files.

Attribute Display Filter

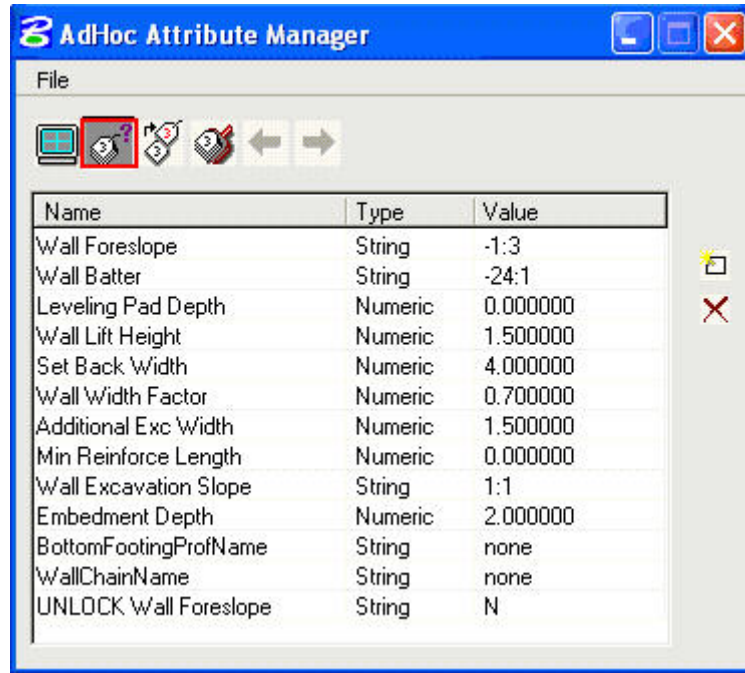
The Attribute Display Filter can be used to query and display the Adhocs drawn through the D&C Manager. Filters can be saved to be reused in a future session by using the **File>Save** and **File>Open** pulldown commands in the Adhoc Attribute Display Filter Dialog Box.

Adhoc attributes associated with a MSE wall is used to demonstrate the Adhoc Attribute Display Filter. With the Attribute Display Filter you have the ability to select elements by more than just the type of element, but also by the different adhoc attribute values. The Attribute Display Filter can be used to display **only the MSE Walls** that have a **Wall batter 24:1** and **Wall Lift Height =1.5**.

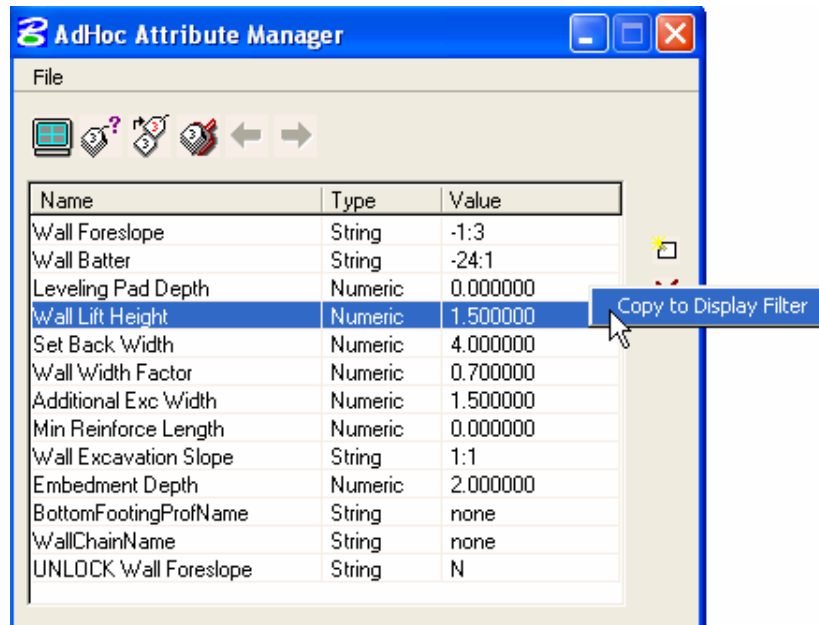
Brown Bag Lunch & Learn #13
10/4/06

To use the Attribute Display Filter Tool:

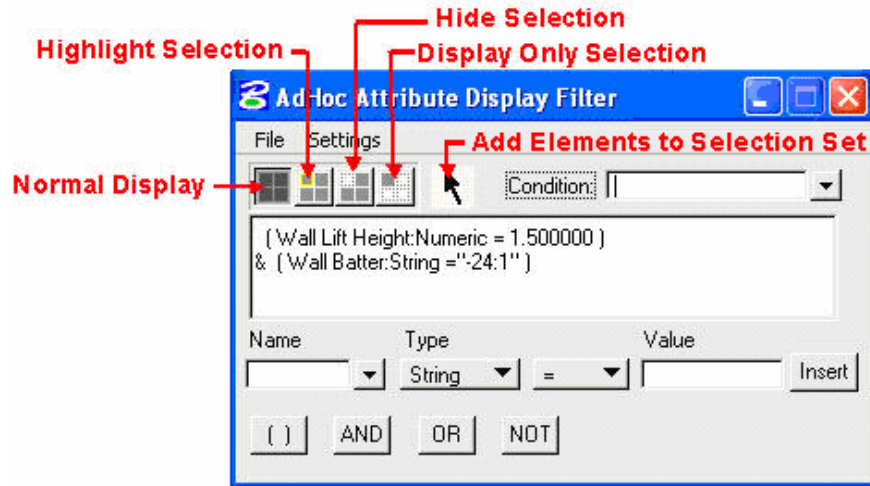
1. Use the **AdHoc Attribute Manager's** Identify element tool to identify the Plan view element. Select plan view element and accept to the populate the dialog as shown below:



2. Display of an element can be filtered using Adhoc Attributes. To filter, **right click** on the adhoc to highlight the attribute, and then **left click** on **Copy to Display Filter**. See below:



3. The **Adhoc Attribute Display Filter** dialog will appear as shown below. The selected adhoc(s) for filtering will be shown in the collection box.



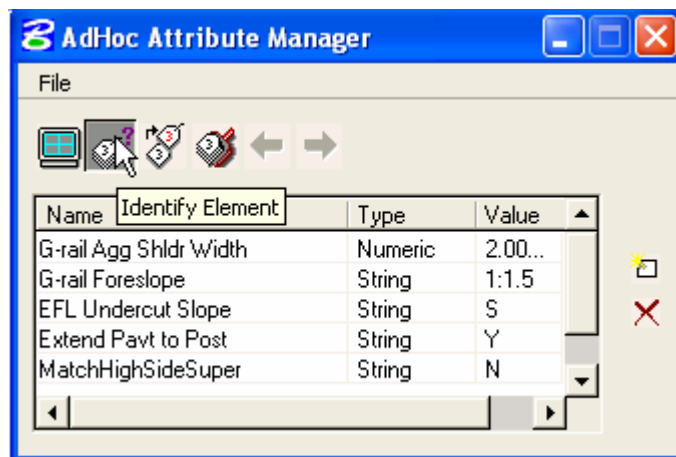
4. If further filtering is required, additional **conditions** may be added to the collection box. For future use of filters use **File>Save As** to save your filter settings.

The following commands can be used to build the filter manually:

- Name: Adhoc Names
- Type: Type of Adhoc
- Boolean Operators: =, >, < and combinations
- Value: Value of the adhoc filter, based on the type of Adhoc
- { } AND OR NOT: Click to add when building your expressions.
- Insert: When fields are populated, click insert to place the query in the list box.

Identify Element

To identify the adhoc attributes assigned to any MicroStation element, click **Identify Element** icon, then select and accept any element. If adhoc attributes are assigned to this element then the list box will be automatically populated.



Set Attributes

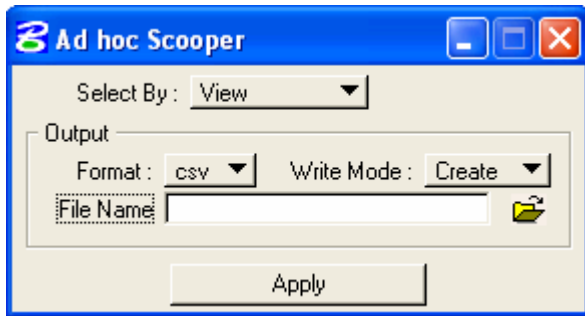
The Set Attributes icon can be used to add or set attributes to any MicroStation element. First, the attributes must be displayed in the list box, then select elements to set. Selection can be done as individual elements or via selection sets (MicroStation selection set tool or the power selector tool).

Brown Bag Lunch & Learn #13
10/4/06



Adhoc Scooper

The adhoc scooper scans all elements in the current selection, determines all the attached adhoc and associated information, and creates an output file.

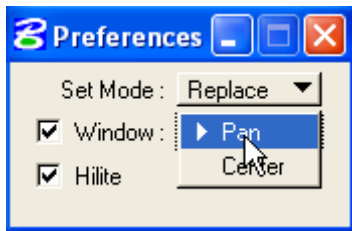


Available pulldown options:

Select By: View
Design File
Selection Set
Fence
Format: csv or mdb
Write Mode: Append or create

File > Preferences

Preferences impact the way MicroStation Selection Set is viewed.



To Activate the **Previous** or **Next** Element navigation tools:

- Adjust the Preferences settings as desired.
- Create elements to be reviewed using the MicroStation Selection Set.
- Click the **Identify Element** icon, activates the navigation tool.
- The **Previous** and **Next** element icons can be used to navigate from one element to another.

Information contained in this handout is taken from Geopak Help Files and Steve Pratt's Knucklehead's Guided Tour of GEOPAK Road 2004 Edition.

Related links: Using Knucklehead's Guide for GEOPAK Road 2004 Edition.-[Adhoc Attribute Manager](#)