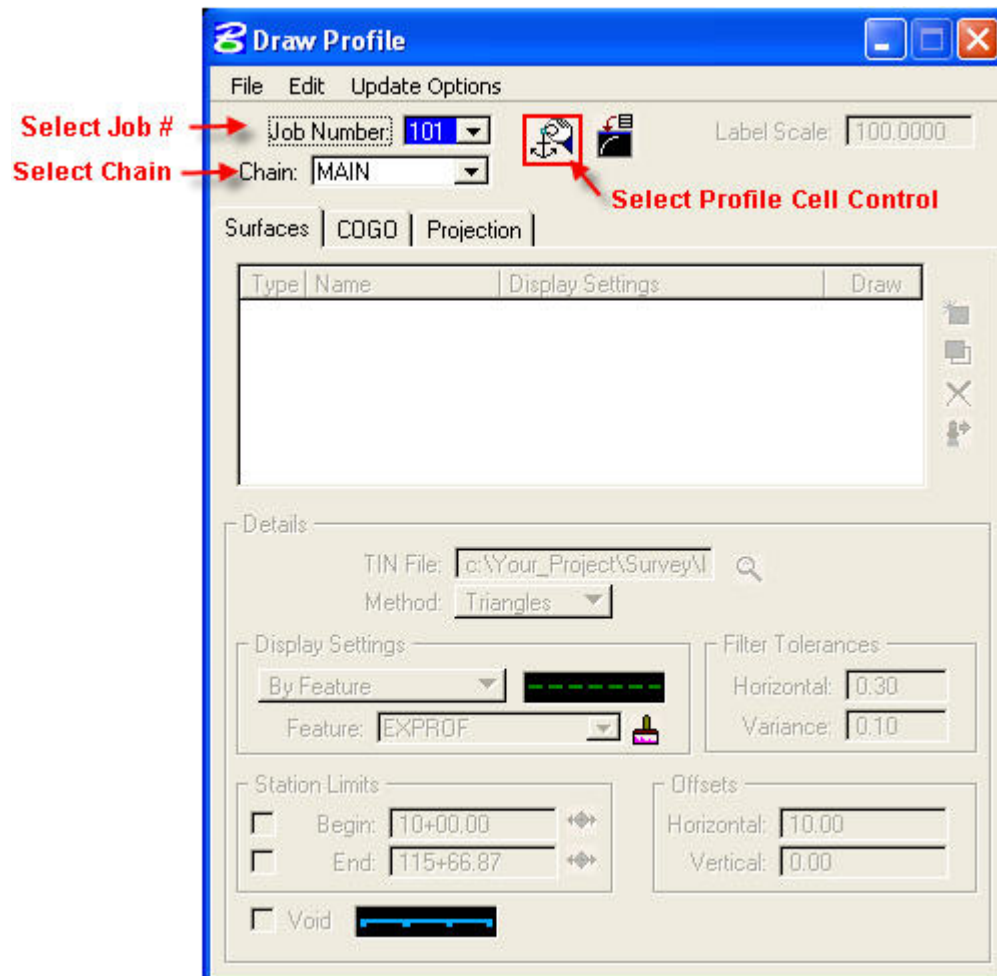


Brown Bag Lunch & Learn #11
8/9/06

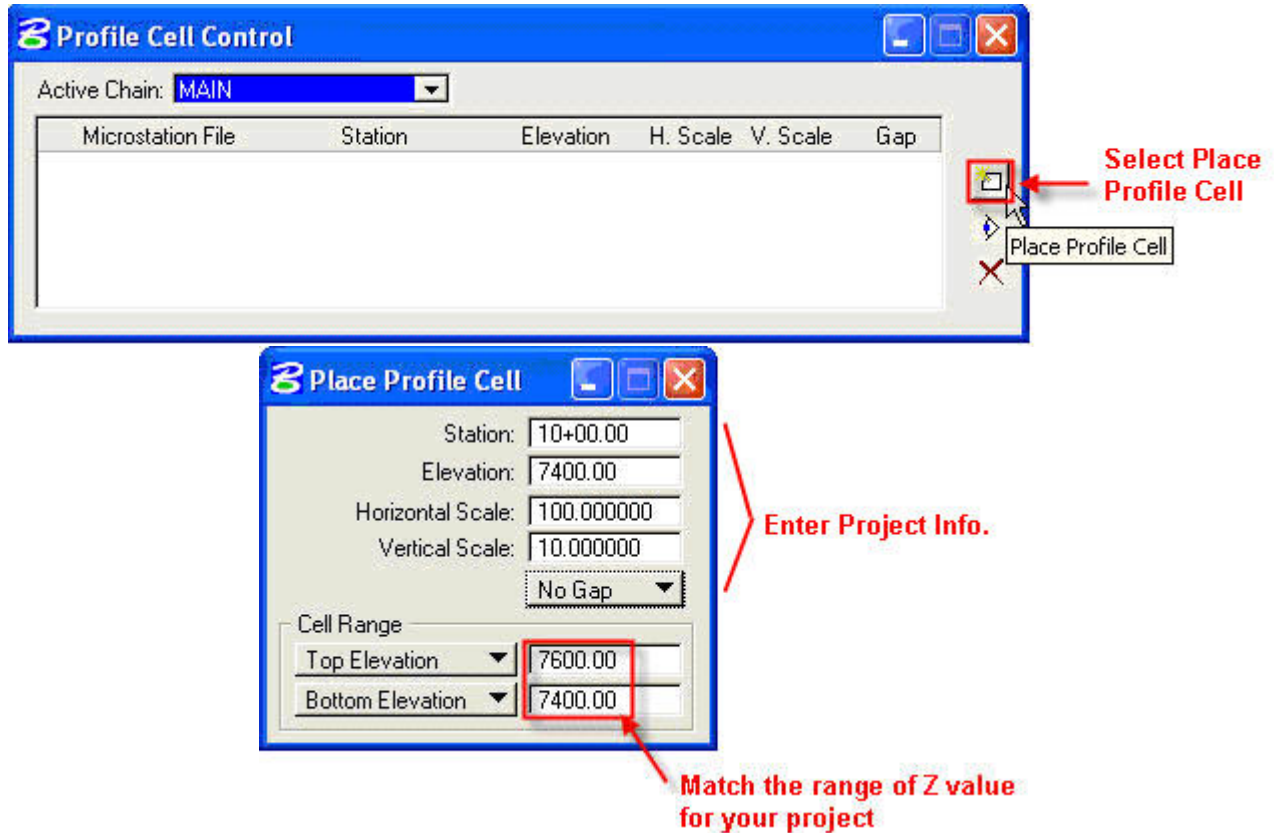
Topic: Draw Profile Tool - Geopak Road

GEOPAK 2004 introduces a new way to create existing ground profile, plot existing ground profile and plot proposed profiles through one dialog. The Draw Profile Tool enables the user to draw several profiles from a variety of sources; GEOPAK coordinate geometry database, GEOPAK binary TIN file and Site Model or Site Object when using GEOPAK SITE.

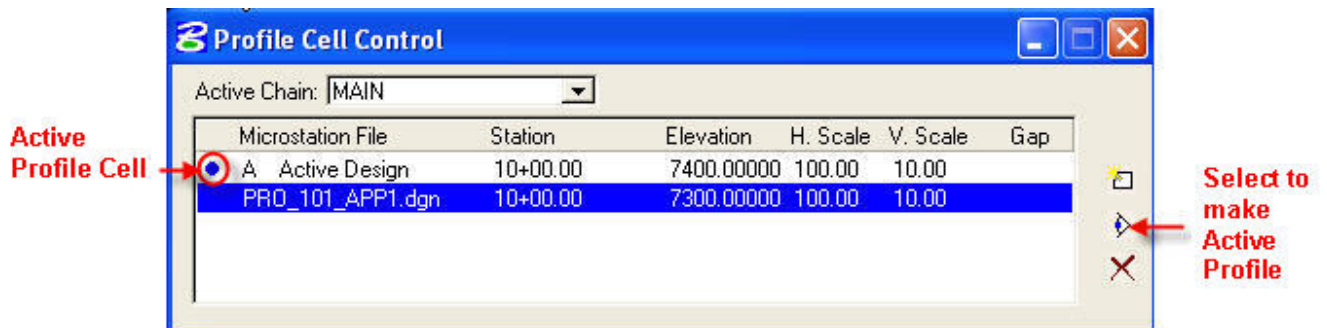
The Draw Profiles Tool is not available through project manager workflow dialog box, but can be accessed by selecting **Applications>GEOPAK ROAD>Plans Preparation>Draw Profiles** or from the **Plans Preparation tool palette** as shown below.



Brown Bag Lunch & Learn #11
8/9/06



Data point to place the profile cell and Profile Cell Control dialog box will be populated as shown below.



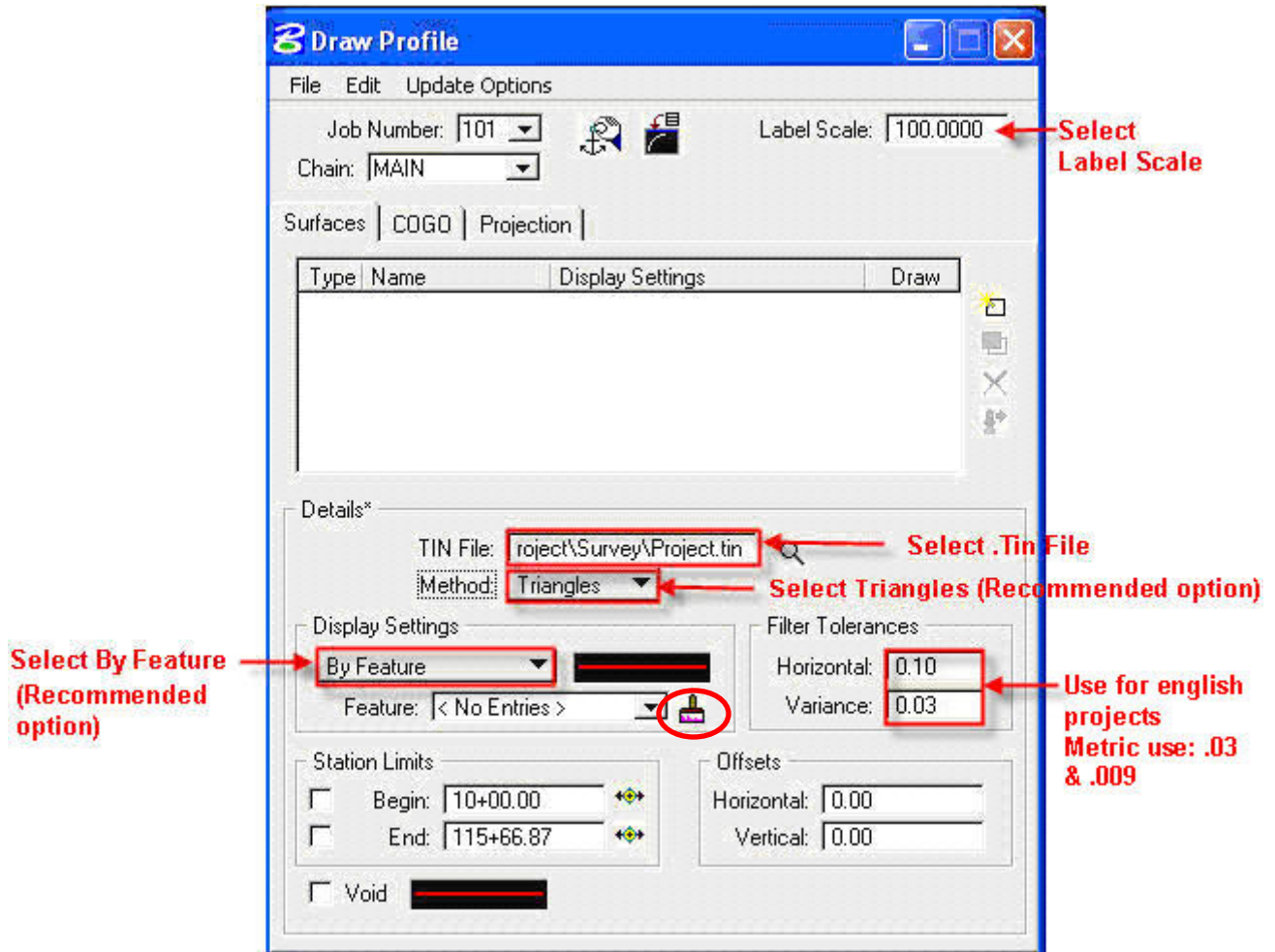
Double click will allow also to activate the designated profile cell (large dot will be placed in the dialog). "A" tells that the profile cell is in the active design.

Close the Profile Cell Control dialog box. A profile cell is required in order to unghost the majority of the Draw Profile Tool dialog box. Profile cell can be placed by any method within GEOPAK prior to drawing profiles.

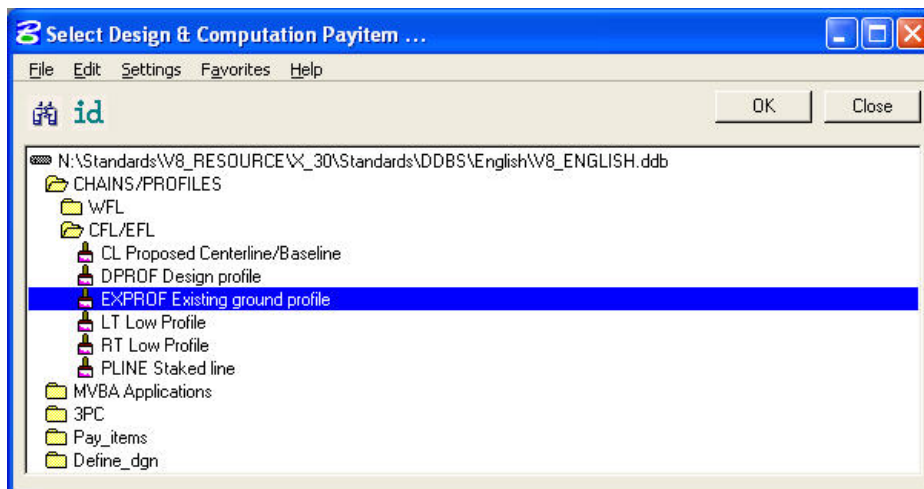
The Draw Profile dialog box has 3 tabs: **Surfaces, Cogo and Projection.**

Surfaces Tab

Surfaces tab can be used to cut existing ground profile from a tin file using the triangles method (recommended). Existing ground profile can be plotted using the level symbology or the D&C Manager Feature setting.

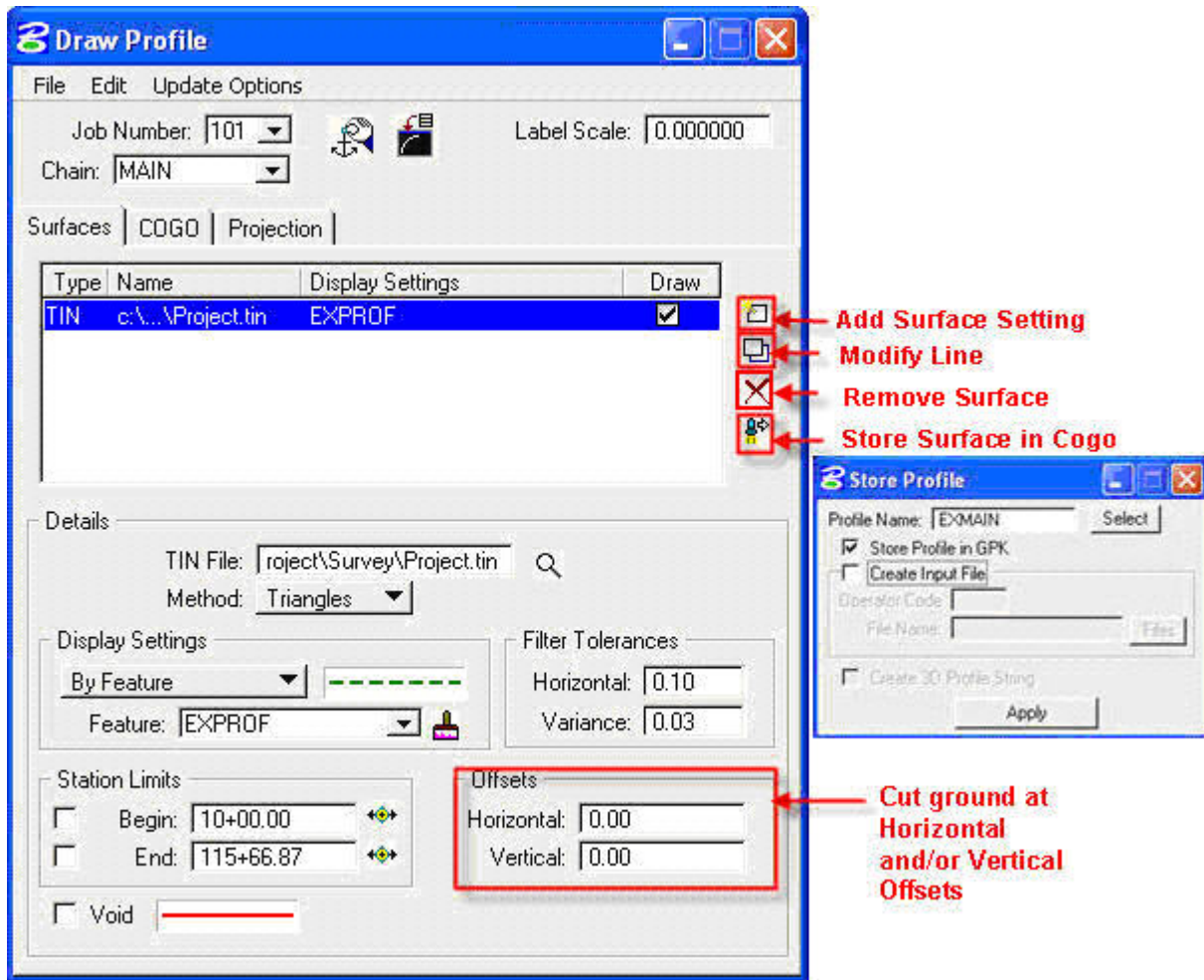


To select D&C Manager feature settings, browse to CHAINS/PROFILES> CFL/EFL>EXPROF Existing ground profile. Select OK to accept feature from D&C Manager.



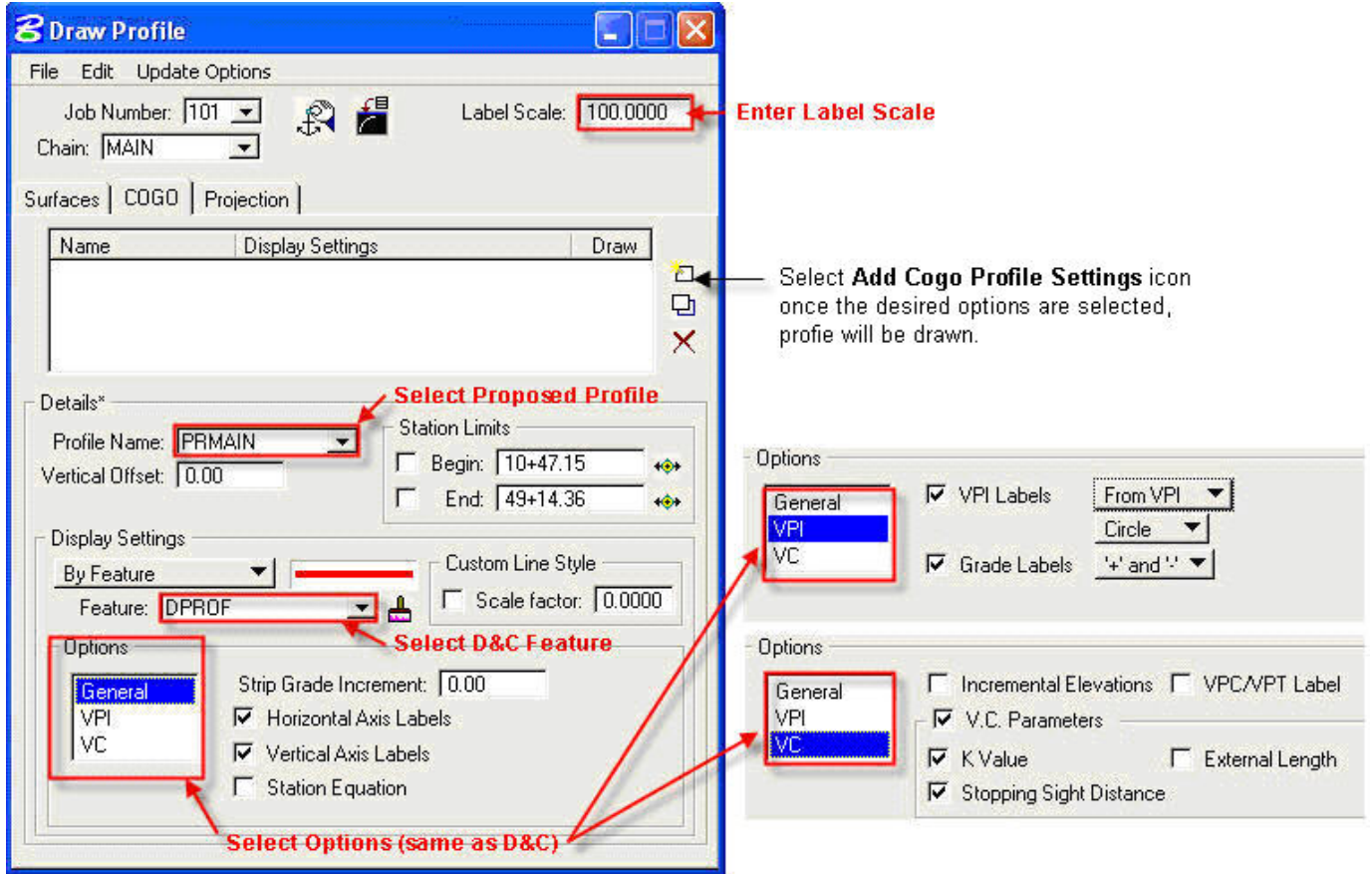
Brown Bag Lunch & Learn #11
8/9/06

Select the **Add Surface Settings** icon to populate the surface settings into the dialog box and instantly draw the profile onto the profile cell.



COGO Tab

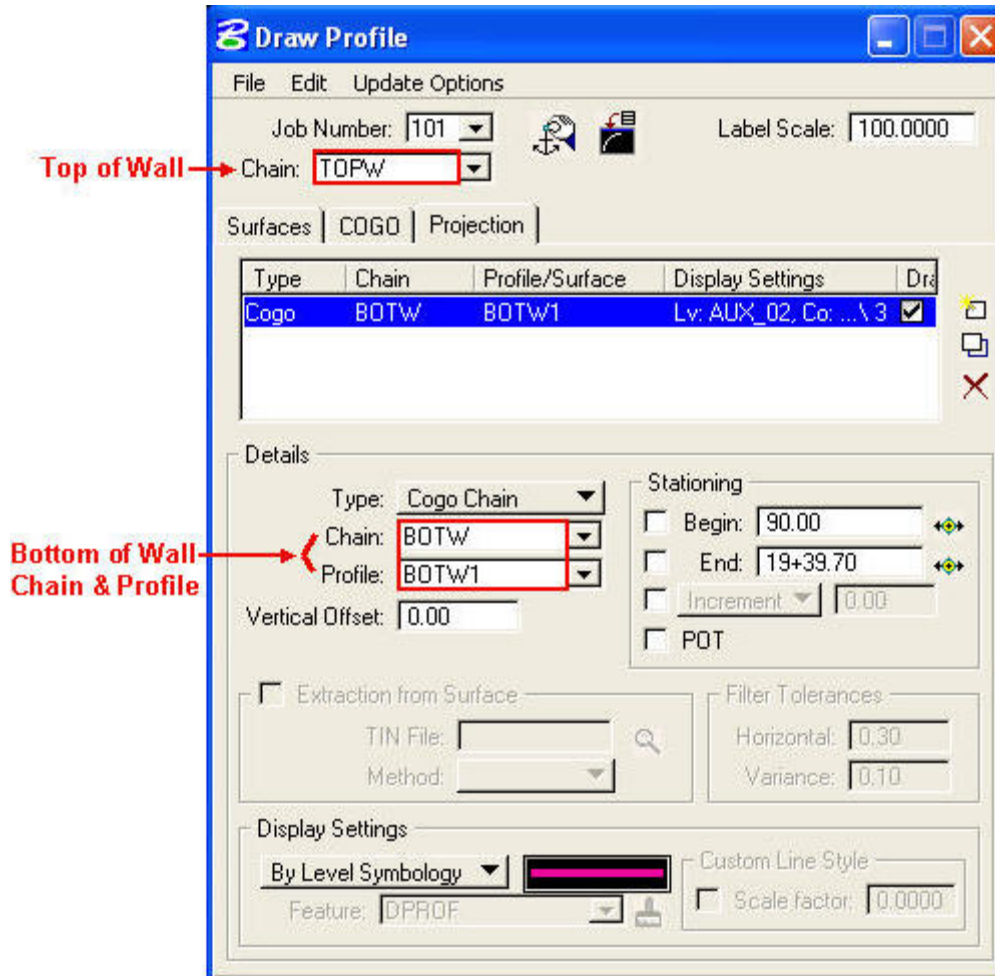
Cogo tab can be used to plot multiple profiles defined in Cogo using the D&C Manager Feature settings or Level Symbology.



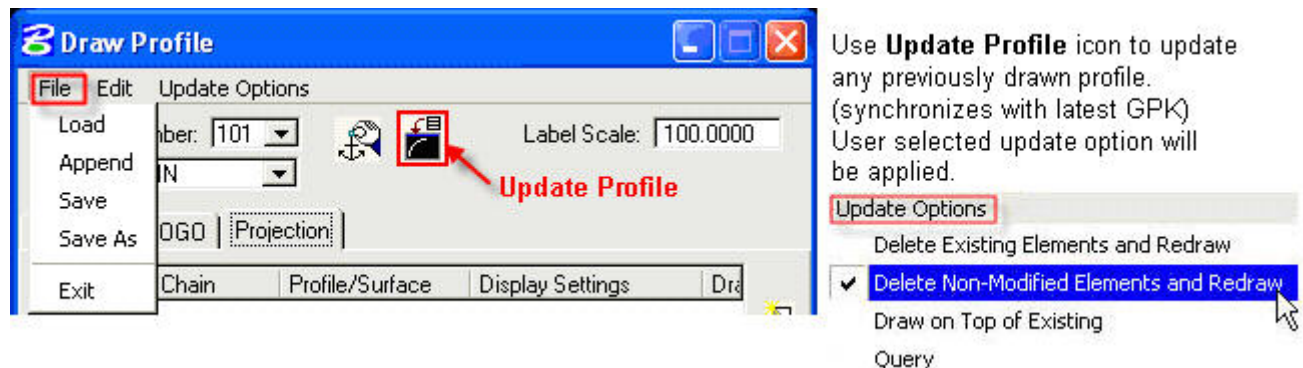
Proposed profiled D&C Manager Feature settings can be selected from CHAINS/PROFILES> CFL/EFL>DPROF Design profile. Select OK to accept feature.

Projection Tab

Projection tab can be used when the chain and profile that needs to be drawn is different than the chain and profile used to create the profile cell. Example: Bottom of Wall chain and profile projected to the Top of Wall Chain.



Profile settings can be saved for future use by selecting **File>Save**, file will be saved with a **.prd** extension.



Brown Bag Lunch & Learn #11
8/9/06

Information contained in this handout is taken from Geopak Help Files.

Related links: *Using Knucklehead's Guide for GEOPAK Road 2004 Edition.* - [Draw Profiles](#)