



Workflow 5: Drawing Pay Item Elements

1. From the D&C Manager select the element to be drawn from the Pay_items Category. In the example below, use Silt Fence.

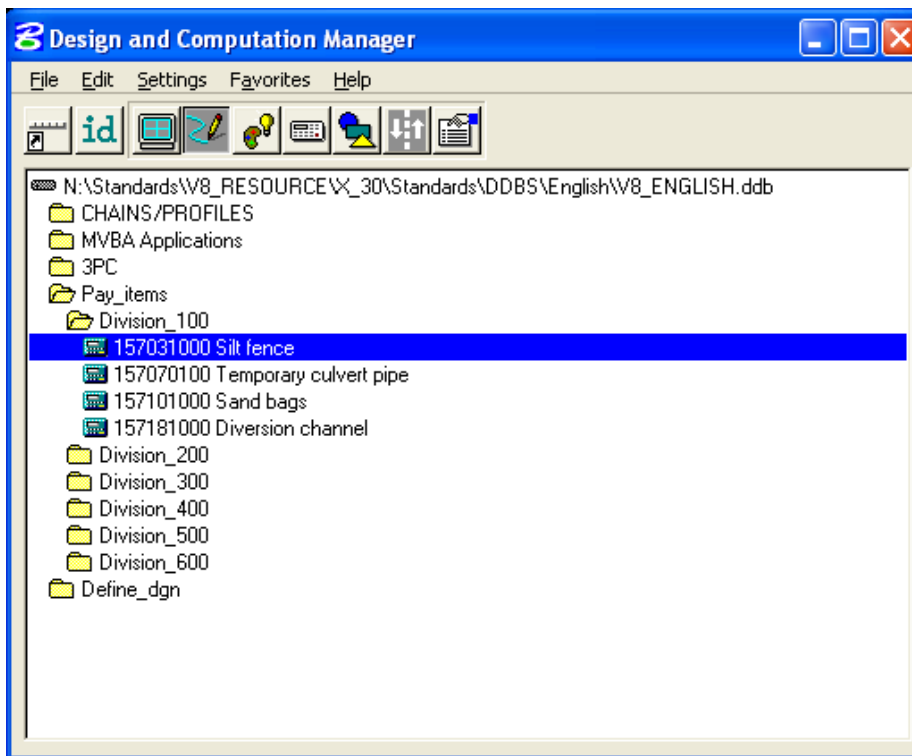


Figure 6-24: Select Database Item

2. Select the desired MicroStation or GEOPAK tool, in this example, the copy parallel tool.



The copy parallel tool, when used with out Place Influence toggled, will always place the new element with the symbology of the existing element, regardless of the active attributes. Place Influence over-rides the existing attributes with that of the selected element.

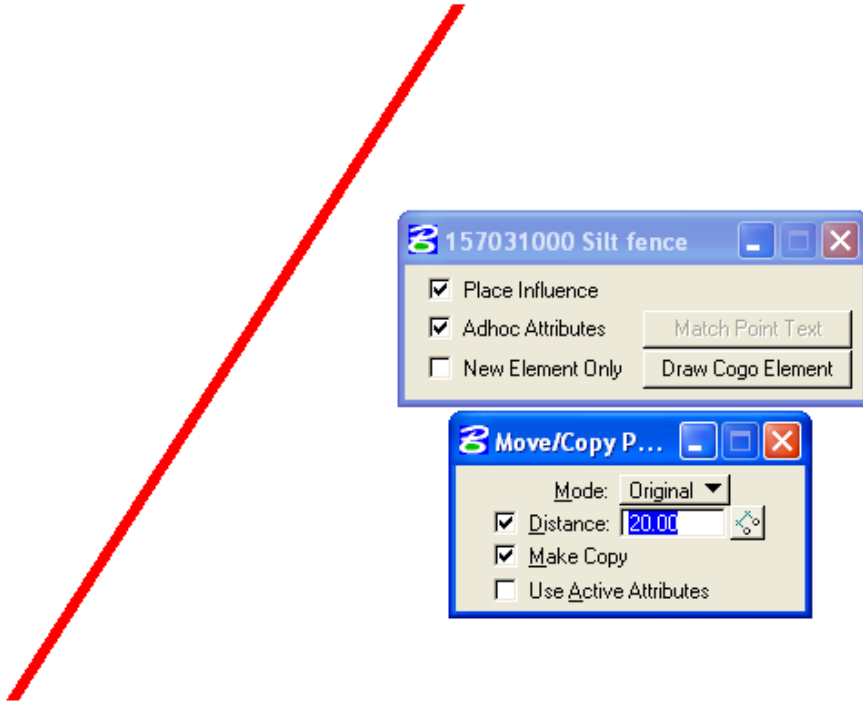


Figure 6-25: Place Influence

3. *With Place Influence toggled on, select the existing element and accept in the desired direction.*
4. *The new element will be drawn with the correct attributes of the element selected in the D & C Manager, regardless of the active MicroStation attributes.*

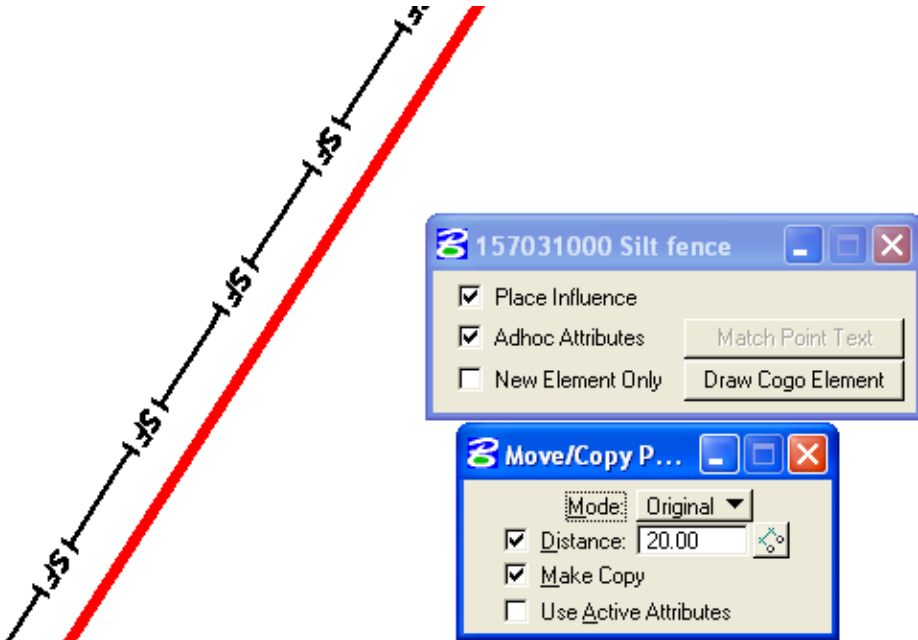


Figure 6-26: Copy Parallel with Place Influence