



Workflow 4: Importing Reference Hub Sections

1. While in the cross section drawing, go through the same first four steps as in Workflow 1 above. Instead of changing the Download Raw button to ASCII XYZ, change it to SOE => Cross-Section. This will bring up the following dialog box.

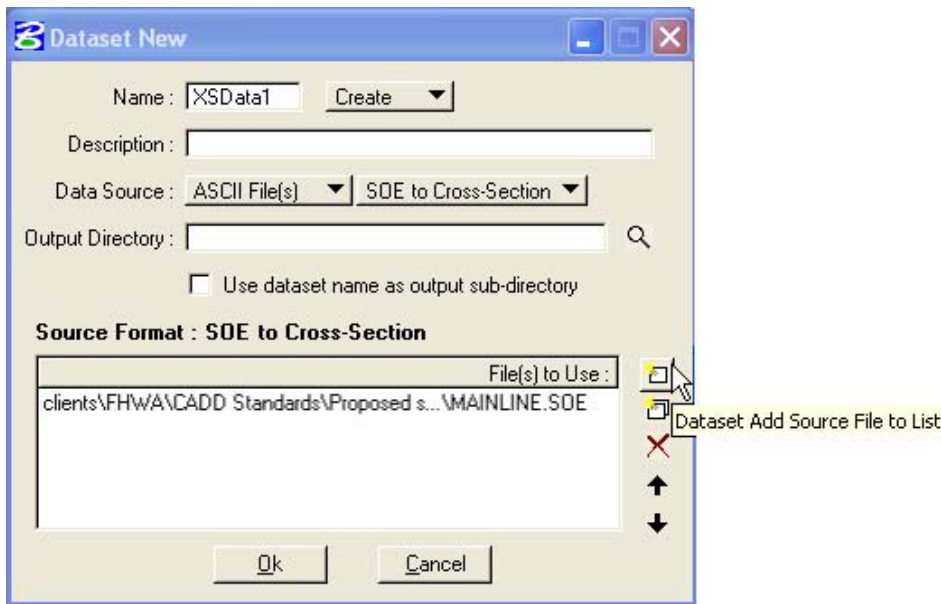


Figure 4-12: SOE =>XS Data Source

2. Select the Dataset Add Source File button to load the .soe file to get the following dialog box.

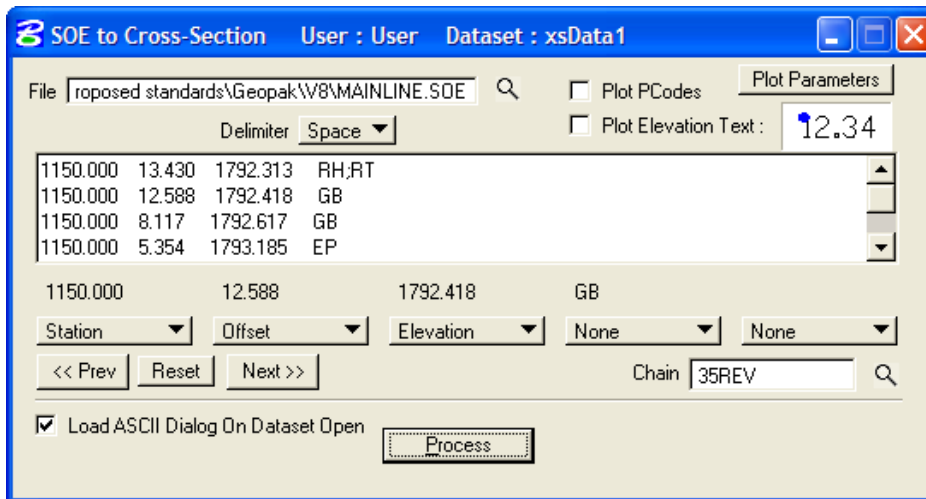


Figure 4-13: Process SOE =>XS Data

3. Make sure the Delimiter button is correct (either Space, or Comma).



4. *Highlight a row in the Contents of File and GEOPAK will drop those values in the space above the bottom buttons. Set the bottom buttons to match the example.*
5. *Select the Plot Parameters button to get the following dialog box.*

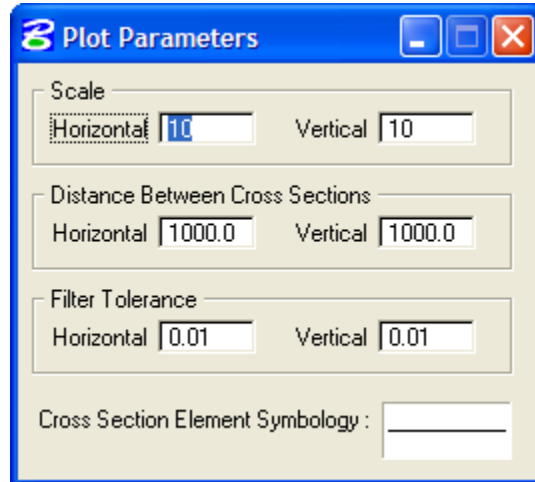


Figure 4-14: Ref Hub Mapping Option

6. *Since the sections are going into the existing cells, the only changes to be made are in the Cross Section Element Symbology. Change the Level, Color, Weight and Style values to match the example below:*

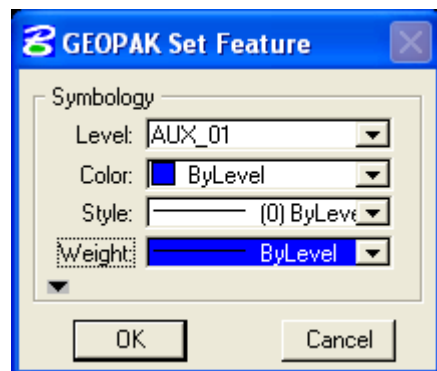


Figure 4-15: Plot Parameters

7. *Select Process and the sections will be drawn into the drawing.*