



Workflow 3: Point Editing

1. While in the drawing containing the graphical elements to be changed select the Geometry>Points>Edit pull downs. GEOPAK will bring up the following dialog box.

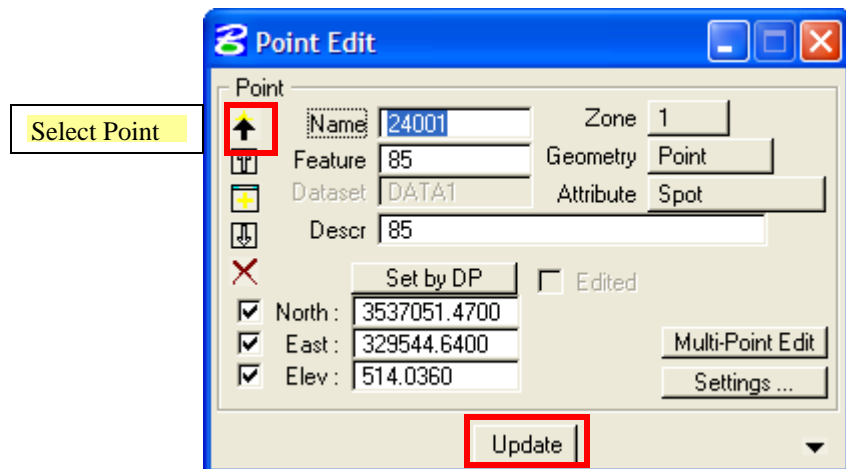


Figure 4-11: Edit Point

2. Click on the Select Point icon and highlight the point to be modified. GEOPAK will fill in all the fields with the values for that point.
3. Click the Update button at the bottom of the dialog box.
4. Once all of the modifications have been made, the .tin file can be updated by repeating steps 12 and 13 of Workflow 1.