



Workflow 2: Survey Chain Editing

1. While in the drawing containing the graphical elements to be changed select the *Geometry>Chains>Edit* pull downs. *GEOPAK* will bring up the following dialog box.

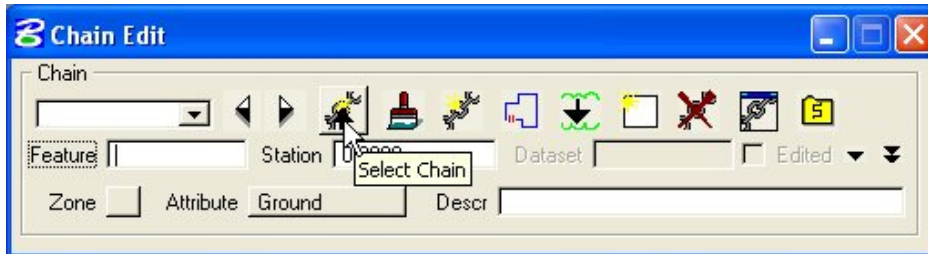


Figure 4-9: Edit Chain, Compact

2. Click on the *Select Chain* icon and choose the chain that needs to be modified. *GEOPAK* will fill all the chain information into the data fields.
3. Click on the double arrows at the right side of the dialog box to show all the chain information. The *GEOPAK Chain Edit* dialog box will expand to the following.

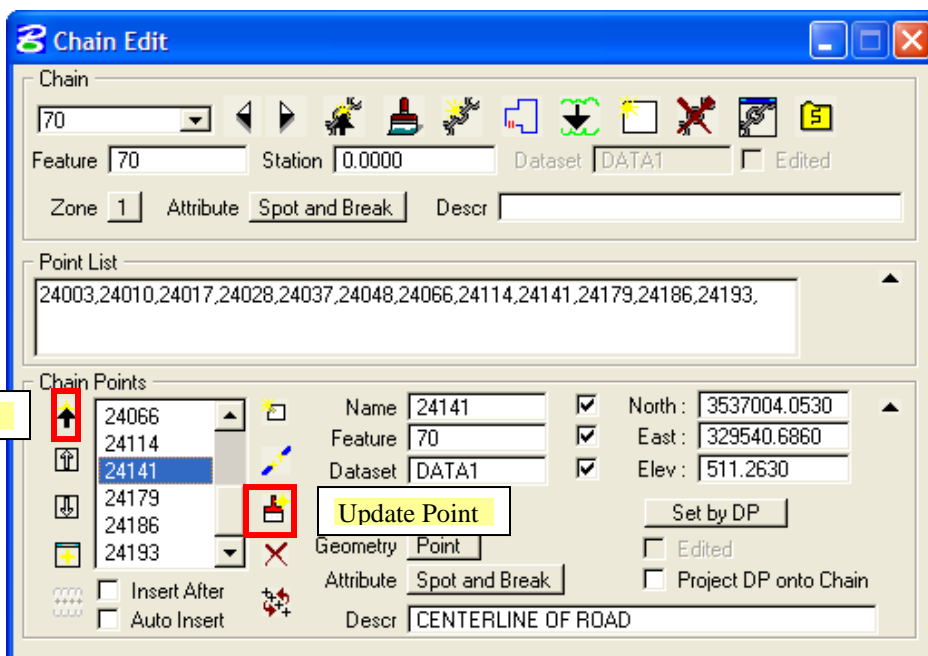


Figure 4-10: Edit Chain, Expanded

4. Click on the *Select Point* icon in the *Chain Points* section and highlight the point that is to be modified. All of the fields will be filled in with that point's information. Make the necessary change and Select the *Update Point* button.
5. Once all of the modifications have been made, the *.tin* file can be updated by repeating steps 12 and 13 of Workflow 1.



By using the Chain Editing tool, the user can break a chain, add points to the chain, and delete points. GEOPAK will also highlight the point that is selected.