



Workflow 5: Port Viewer

1. Begin by accessing the Working Alignment Definitions dialog box from the main Project Manager dialog.

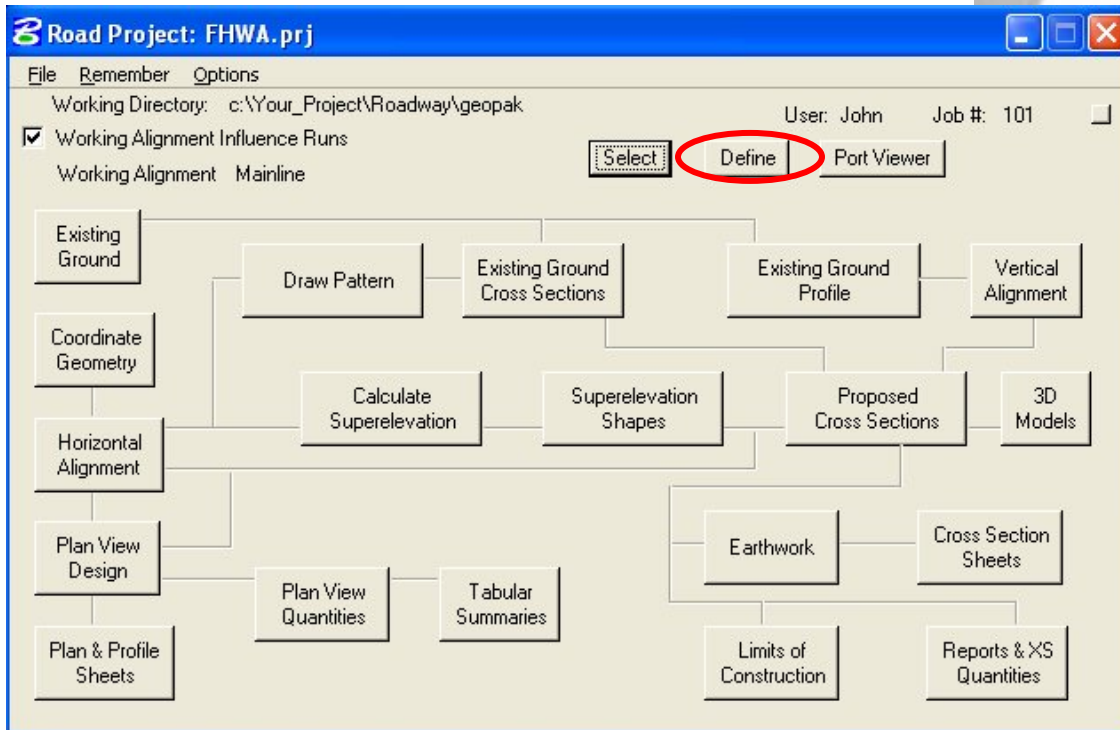


Figure 3-17: Access Working Alignment Definitions

2. From the Working Alignment Definition dialog box, shown below, complete the information on the right side of the dialog box. The information, including design file names, chain/profile, cell origin and scale of the profile, etc., must be defined so that the Port Viewer can find the desired files.

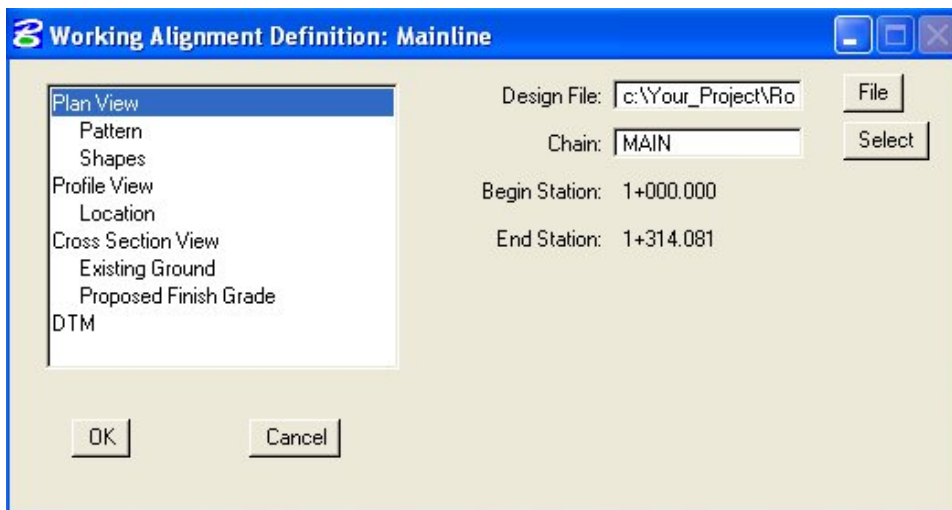


Figure 3-18: Working Alignment Definitions



- Once the Working Alignment information has been defined, the port viewer can be accessed. From the main Project Manager dialog, select the Port Viewer button.

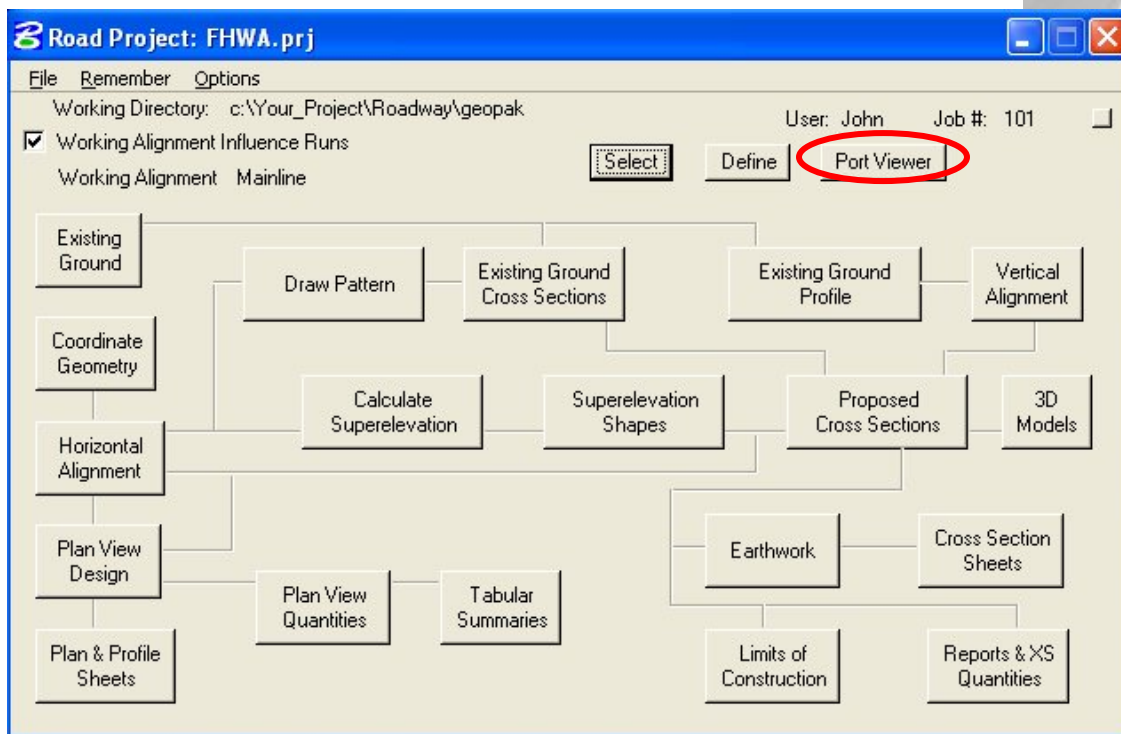


Figure 3-19: Accessing Port Viewer

- The three views should now be visible, along with the Port Viewer tool menu.

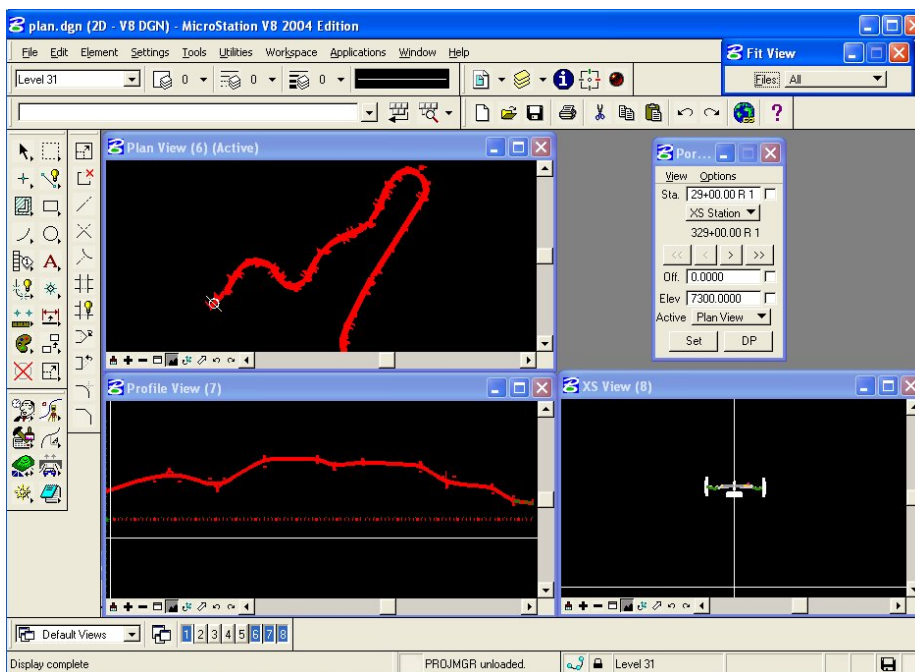


Figure 3-20: Port Viewer



- As shown above, the Port Viewer allows simultaneous viewing of each element. Also, the port viewer provides index lines for easy locating of stations along the alignment. Shown as a line perpendicular to the centerline in the plan view, a vertical line in profile, and cross hairs in cross-section, the index lines allow the user to see where, for example, a problem in profile falls in the plan view. Move through stations by selecting the greater than and less than symbols in the center of the Port Viewer dialog box.

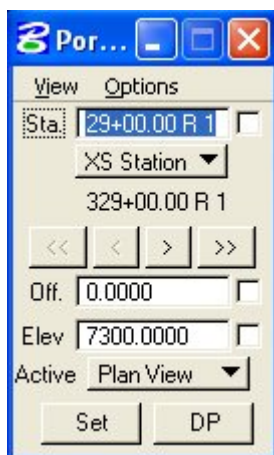


Figure 3-21: Port Viewer Tools

- From the view pull down, the user can fit each of the views or set any of the views as the active view.

The Port Viewer can be a powerful timesaving tool, as opposed to switching back and forth from the different drawings, during the design process. For more information on the Port Viewer, access the GEOPAK help from the GEOPAK pull down menu.

Related links: [Setting up Project Manager for Proposed Cross-Sections](#) using Knucklehead's Guide for GEOPAK Road 2004 Edition.