



Workflow 4: Creating a Working Alignment



Be sure the Working Alignment Influence Runs box is checked before continuing with this workflow. When checked, all information defined will be attributed to the current working alignment. You may create multiple alignments as needed.

1. From the Road Project Manager dialog box, click on the Select button.

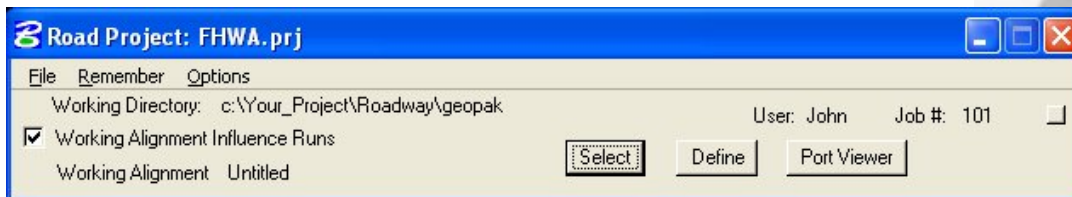


Figure 3-13: Select Working Alignment

2. The Select Working Alignment dialog will be activated. Select Run>New from the pull down menu.

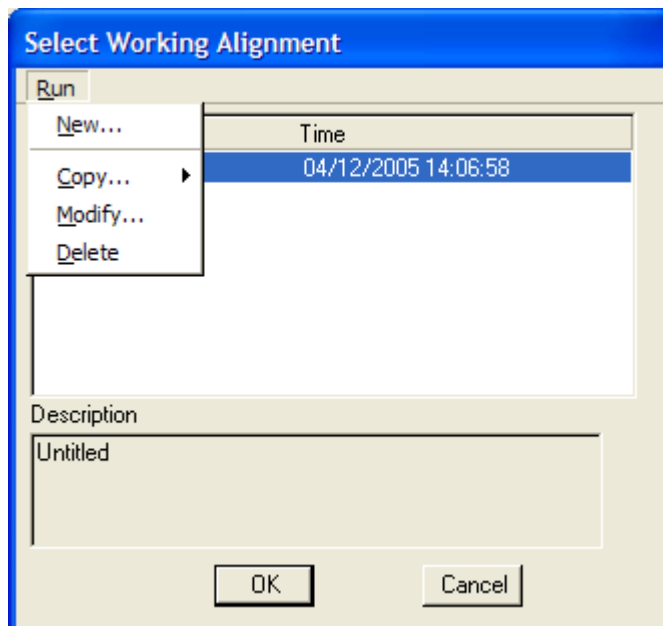


Figure 3-14: Create New Working Alignment

3. Fill in the Run Name box and, if desired, fill in the description box. Select OK box to finish.



Figure 3-15: Create New Working Alignment Run

4. *The newly created working alignment run has been created and will now be displayed in the select working alignment dialog box. Highlight the desired working alignment and select the OK button.*

Name	Time
Mainline	02/03/2006 16:48:52
Untitled	02/03/2006 16:10:27

Figure 3-16: Select Working Alignment

5. *The new working alignment name is now displayed on the Road Project Manager dialog box and the user is now ready to begin project work.*

The workflow outlined above merely creates the empty shell of the working alignment. At this point, or as the project progresses, select the define button and fill in the information, as it becomes available, to complete the working alignment definition. All information defined will be attributed to the selected working alignment.