




Workflow 1: New Project Creation

1. Select Applications>GEOPAK ROAD>Project Manager, or select the project manager icon  from the GEOPAK Road toolbar. The following dialog box will open.

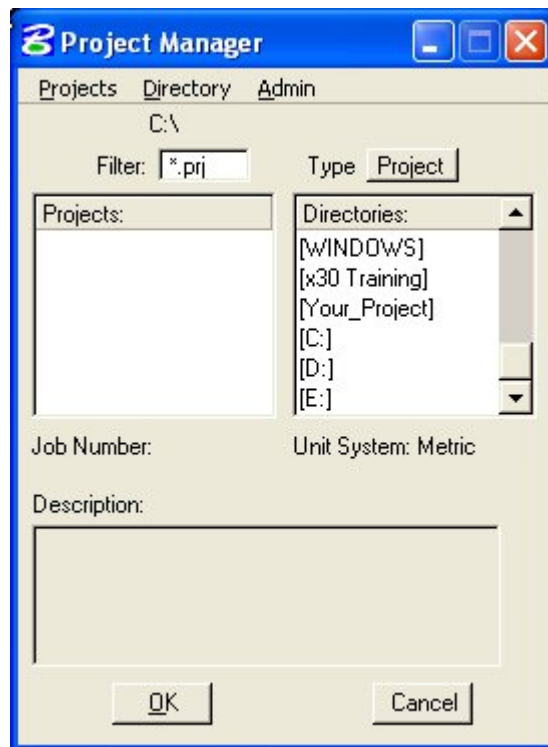


Figure 3-1: Project Manager

2. From the Directories section of the Project Manager dialog box, middle right side, path to the desired directory to create the project. This should be the Your_Project\Roadway\Geopak directory.
3. From the Projects pull down menu, select New.
4. Fill in the desired project name, working directory, job number, and a brief description of the project.



Figure 3-2: Create New Project

The Project Name specified is combined with a ".prj" extension to create the main Project Manager set-up file in the Geopak directory. Therefore, the name specified must be a valid Windows file name (i.e., it cannot contain the special characters \ / : * ? " < > |) Although there is no standard naming convention used for .prj files in CFLHD, it's good practice to use a name that relates to the project's route designation because the Project Name specified here is used to access the Project Manager setup for the project in subsequent sessions.



For CFLHD roadway designers the Working Directory selected should be the **..\Roadway\design** or **...\Roadway\Geopak** subdirectory under the main project directory on the N: drive. Project Manager set-up file (*.prj) should be always placed in the **...\Roadway\Geopak** subdirectory under the main project directory on the N: drive.

A/E Contractors should get GEOPAK job numbers from their CFLHD Lead Designer. CFLHD roadway designers should get GEOPAK job numbers from their Design Team Leader.

If the user is creating a new project definition that does not have an existing .gpk file then the GEOPAK job number should be keyed into the Job Number field. This is how a new .gpk file is created within Project Manager. If the user is creating a new project that has an existing .gpk file, click on the Select button and select the existing .gpk file. If the existing .gpk file isn't visible in the selection window then the existing .gpk file is not in the Geopak directory or the Geopak directory path needs to be redefined.

5. *Select the Preferences button, and set the desired project related preferences. (See the chapter on GEOPAK Preferences, for information related to the preferences dialog box.) Unit specific preferences are shown in the dialog boxes below.*

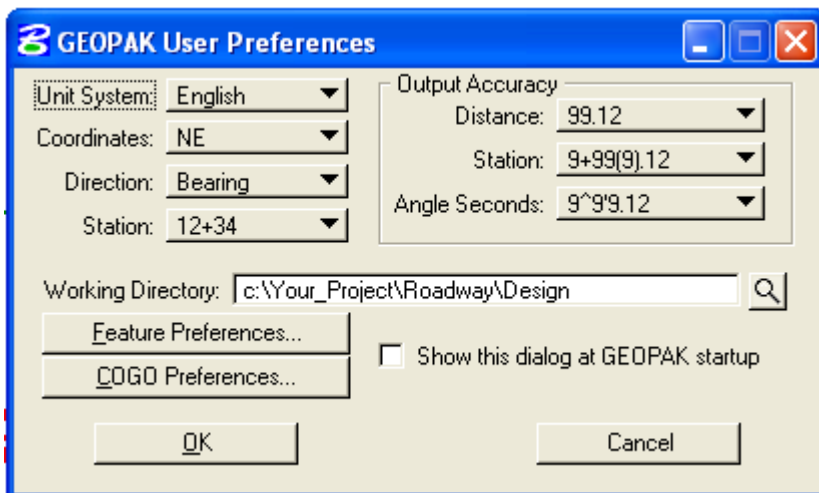


Figure 3-3: English Preferences

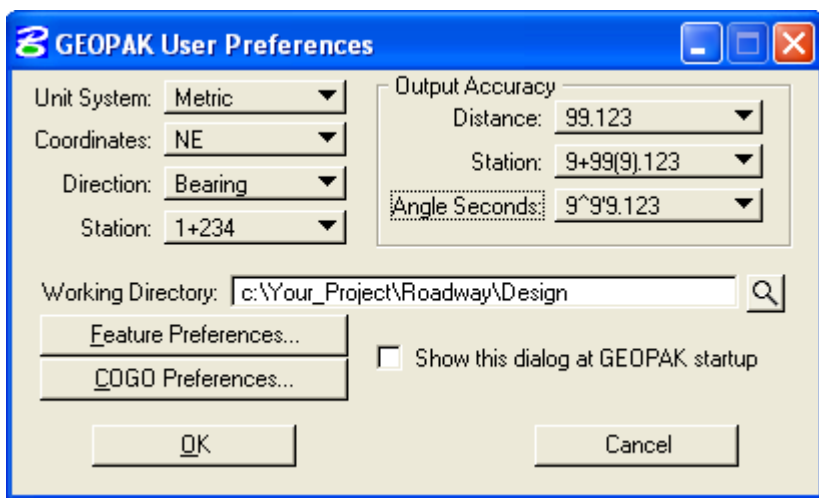


Figure 3-4: Metric Preferences

6. *Select the COGO Preferences button. Set the Job open mode to Query. Set the path as need for the Gpk directory, Input file and Output file if different from the working directory.*

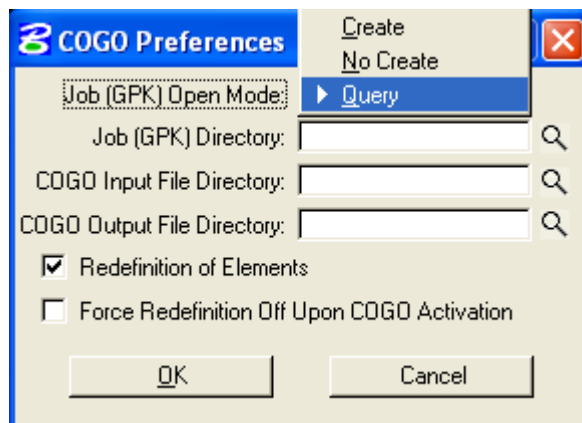


Figure 3-5: Job Open Mode



7. *Select OK to return to the User Preferences dialog.*
8. *Select OK button in the User Preferences dialog to exit and accept the preferences.*
9. *Select OK button on the Create New Project dialog box to finish creation of the new project. (If the .GPK file, corresponding to the job number, does not exist the user will receive an alert stating that the job number does not exist and asking if the job should be created in the Geopak directory.)*

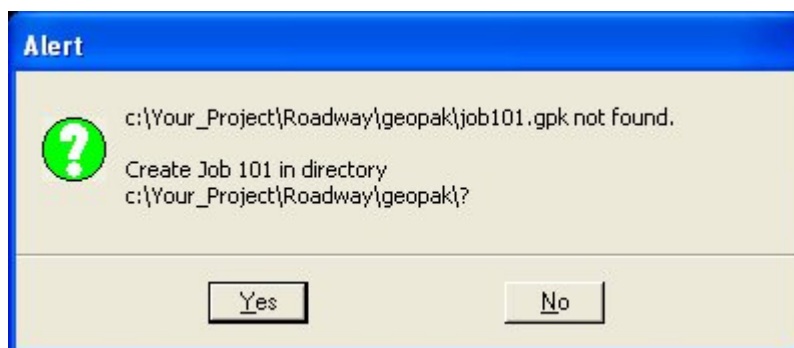


Figure 3-6: .GPK File Alert

At this point, if the job number exists and the user gets the above alert then the existing .gpk file does not reside in the Geopak directory that was specified in the GEOPAK User Preferences dialog (See step 6 above). The user should always click the No button. Clicking Yes here will create a new empty job101.gpk, leaving the user with 2 different .gpk files of the same name in different locations. Fix this problem either by moving the .gpk file to the specified Geopak directory, or by changing the Job (GPK) directory path to point to the directory where the .gpk file resides, whichever is appropriate. Then repeat steps 6-10.



10. *Select Yes on the Create New Project dialog box, the user is taken back to the original Project Manager dialog box to select the desired project. In the case of a newly created project, the name will now be in the projects window ready for selection.*



Once you are finished, users must be created within each project. At least one user must be created for each project. See workflow 3 for user creation.



Users should create only one .prj project file per project and only one .gpk file per .prj file unless special circumstances exist.