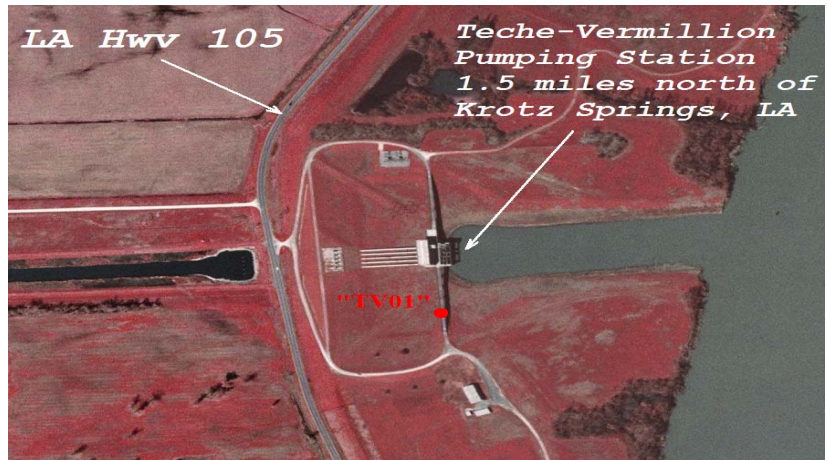


**Survey Marker Data Sheet**

**Station: TV01**

**Vicinity Map:** Reproduced from USGS "KROTZ SPRINGS, LA" DOQQ  
**State:** Louisiana  
**County/Parish:** St. Landry  
**Region:** Southeast US  
**Nearest Town:** Krotz Springs, LA  
**USGS Quad:** Krotz Springs, LA  
**T.R.S.:** Unknown  
**Nearest Hwy:** LA Hwy 105  
**Hwy Mile Post:** Unknown  
**B/L Station:** N/A  
**B/L Offset:** N/A



<p><b>Station Name:</b> TV01  <b>COE PID:</b> To be determined  <b>NGS PID:</b> N/A  <b>Date Set:</b> July 22, 2006  <b>Set By:</b> Lowe Engineers LLC  <b>COE Job#:</b> 06-094  <b>Date Recovered:</b> N/A  <b>Recovered By:</b> N/A  <b>Owner:</b> USACE</p>	<p><b>NAD83(CORS96:2002.0)</b>  <b>Lat:</b> 30°34'04.68697" N  <b>Lon:</b> 91°45'41.41873" W  <b>LA SPCS83 South Zone (1702)</b>  <b>Northing:</b> 752,304.713 feet  <b>Easting:</b> 3,146,075.426 feet  <b>NAVD88(2004.65)</b>  <b>Elev:</b> 45.13 feet          (NAD83 "h" – GEOID03:05 "N"          -44.81 feet minus -89.94 feet)  <b>Scale Factor/Convergence:</b>          Undetermined</p>	<p><b>Controlling Stations:</b>          NGS Stations E 284,          1407+40.38, and P 282</p> <p><b>Survey/Computation Method:</b>          Static, least-squares network adjustment          by Lowe Engineers LLC</p> <p><b>Local Network Accuracy:</b>          2σ Horiz: 0.007 meters = 0.023 feet          2σ Vert: 0.011 meters = 0.036 feet</p>
--	---	--

**Monument Location:** The station is located at the Teche-Vermillion Pumping Station, being 1.5 miles north along LA Hwy 105 from the intersection of US Hwy 190 and LA Hwy 105 in Krotz Springs, LA. The station is on the east side of LA Hwy 105 at the pump station facility, 112 feet north of the south end of the elevated roadway leading to the pump house platform in the west curb.

**Monument Description:** The mark is a 3-1/2" brass disk set in the top of a concrete curb and stamped "TV01, 06-094".

Ref Marks:	NAVD88(2004.65):	Relative to TV01:	Brief Description:
E 284	37.47 feet	-7.66 feet	NGS Station used for GPS survey control
1407+40.38	61.45 feet	16.32 feet	NGS Station used for GPS survey control
P 282	29.17 feet	-15.96 feet	COE PBM at Teche-Vermillion Pump Station
Staff In "Zero"	-0.60 feet	-45.73 feet	COE Inflow Staff at Teche-Vermillion PS
Staff Out "Zero"	-0.58 feet	-45.71 feet	COE Outflow Staff at Teche-Vermillion PS



**TV01 – Looking North at Teche-Vermillion PS**  
 7/27/06



**TV01 at Teche Vermillion Pump Station**  
 7/27/06