

DRAFT

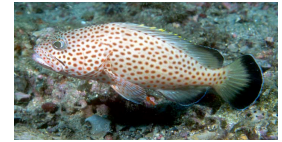


FISHES of Deepwater Communities in the Northwestern Gulf of Mexico

Developed by Flower Garden Banks National Marine Sanctuary
Emma L. Hickerson, G.P. Schmahl, Douglas C. Weaver

Collaborators: Kyle Byers (NOAA/FGBNMS), Lance Horn (National Undersea Research Center/University of North Carolina at Wilmington)

February, 2007



Epinephelus guttatus
Red hind
(Joyce and Frank Burek)

BERYCIFORMES Holocentridae - Squirrelfishes



Ostichthys trachypoma
Bigeye soldierfish



Corniger spinosus
Spirncheek soldierfish



Sargocentron bullisi
Deepwater squirrelfish

LOPHIIFORMES Ogcocephalidae - Batfishes



Ogcocephalus cf. declivirostris
Slantbrow batfish



Ogcocephalus cf. nasutus
Shortnose batfish



Brotula barbata
Bearded brotula

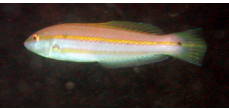
PERCIFORMES Labridae - Wrasses



Decodon puellaris
Red hogfish



Halichoeres bathyphilus
Greenband wrasse (male)



Halichoeres bathyphilus
Greenband wrasse (female)

Scaridae - Parrotfishes



Sparisoma atomarium
Greenblotch parrotfish

Apogonidae - Cardinalfishes



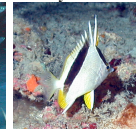
Apogon affinis
Bigtooth cardinalfish

Carangidae - Jacks



Selar crumenophthalmus
Bigeye scad

Chaetodontidae - Butterflyfishes



Prognathodes aya
Bank butterflyfish

Haemulidae - Grunts



Haemulon striatum
Striped grunt



Haemulon melanurum
Cottonwick
(Joyce and Frank Burek)



Emmelichthyoys atlanticus
Bonnetmouth

Lutjanidae - Snappers



Lutjanus campechanus
Red snapper



Pristipomoides aquilonaris
Wenchman

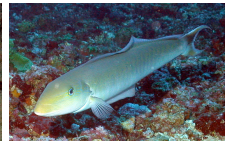


Rhomboplites aurorubens
Vermilion snapper
(Joyce and Frank Burek)

Malacanthidae - Tilefishes



Caulolatilus chrysoptus
Goldface tilefish



Malacanthus plumieri
Sand tilefish

Mullidae - Goatfishes



Upeneus parvus
Dwarf goatfish

Priacanthidae - Bigeyes



Priacanthus arenatus
Bigeye



Pristigenys alta
Short bigeye

Sciaenidae - Drums



Pareques iwamotoi
Blackbar drum



Pareques umbrusos
Cubby
(Joyce and Frank Burek)

Serranidae - Sea Basses



Anthias tenuis
Threadnose bass



Pronotogrammus martinicensis
Rough tongue bass



Hemanthias leptus
Longfin bass



Hemanthias vivanus
Red barbier



Schultheza beta
School bass



Serranus annularis
Orangeback bass



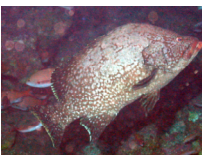
Serranus notospilus
Saddle bass



Serranus phoebe
Tattler bass



Liopropoma eukrines
Wrasse bass



Dermatolepis inermis
Marbled grouper

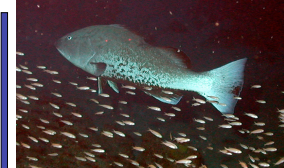


Dermatolepis inermis
Marbled grouper (juvenile)



Gonioplectrus hispanus
Spanish flag

Serranidae - Sea Basses (cont.)



Mycteroperca microlepis
Gag



Epinephelus mystacinus
Misty grouper



Mycteroperca phenax
Scamp

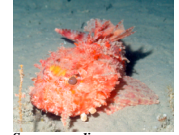


Mycteroperca interstitialis
Yellowmouth grouper

PLEURONECTIFORMES



Cyclopsetta chittendeni
Mexican flounder



Scorpaena dispar
Hunchback scorpionfish

Triglidae - Searobins

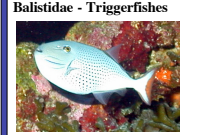


Peristedion sp.
Searobin



Pronotus stearnsi
Shortwing searobin

TETRAODONTIFORMES



Xanthichthys ringens
Sargassum triggerfish



Canthigaster jamestyeri
Goldface toby

ZEIIFORMES



Antigonia capros
Deep-bodied boarfish



Myrichthys breviceps
Sharptail eel

All photographs were taken using a camera on the NTRC/UNCW remotely operated vehicle at depths between 50 and 150m, unless credited to Joyce and Frank Burek.