

F.E. Warren Metrics

Table 1: SG EGL Performance Metrics

	*Dec-11	Nov-11	Oct-11	Sep-11	Aug-11	Jul-11
Access - Routine	96.38	96.80	94.62	98.31	98.98	96.91
Aggregate Satisfaction	94.77	94.00	94.65	95.25	94.78	94.69
Appointment Availability				0.00	60.00	
Asthma	93.62	95.83	95.70	96.59	96.47	97.53
BP - RVU Analysis - Primary Care	99.63	105.40	97.85	83.63	89.98	84.95
BP - RVU Analysis - Specialty/Other	81.86	98.26	106.09	82.97	101.29	83.12
Breast Cancer	67.66	68.25	68.46	68.93	69.72	72.63
Cervical Cancer	85.89	86.64	86.46	86.86	86.56	86.47
Childhood Immunization	36.97	34.21	31.98	31.76	31.10	21.85
Clinic Satisfaction	95.69	94.24	93.33	96.72	95.96	96.05
Colon Cancer	68.09	68.22	67.92	68.01	66.93	66.45
Communication	96.36	96.35	98.93	98.88	98.48	98.64
CPT/HCPCS - APV				91.38		
CPT/HCPCS - Non-APV	99.20				98.13	94.00
Dental Oral Health	64.89	64.84	64.52	63.08	61.57	60.58
Diabetic (by HgB A1C)	84.03	82.64	82.55	83.22	83.44	85.33
Diabetic Care (By A1C Control)	70.14	68.06	70.47	70.47	70.20	73.33
Diabetic Care (By LDL Control)	52.78	52.08	53.02	54.36	51.66	54.67
Diabetic Care (By LDL Screening)	77.78	76.69	77.18	77.85	73.61	78.67
E&M - APV				87.90		
E&M - Non-APV	92.06				93.33	92.74
ICD-9-CM - APV				93.33		
ICD-9-CM - Non-APV	96.37				94.47	94.44
IMR	82.66	83.48	83.42	83.69	83.30	83.40
Management of Healthcare	94.83	94.29	95.29	96.65	92.54	93.42
Provider Availability	91.45	88.89	89.06	86.74	90.05	86.18
Provider Satisfaction	95.65	96.43	96.83	97.80	97.47	99.34

Source: SG EGL

*Data for most current month may not be complete.

Key: green = excellent, yellow = satisfactory, red = poor

Breast Cancer Screening = Percentage of women, age 42-51, with a mammogram in previous 24 months

Cervical Cancer Screening = percentage of women aged 24-64 years who had cervical cancer screening in the past three years

Colon Cancer Screening = percentage of adults, age 51-80, who have had appropriate colorectal cancer screening.

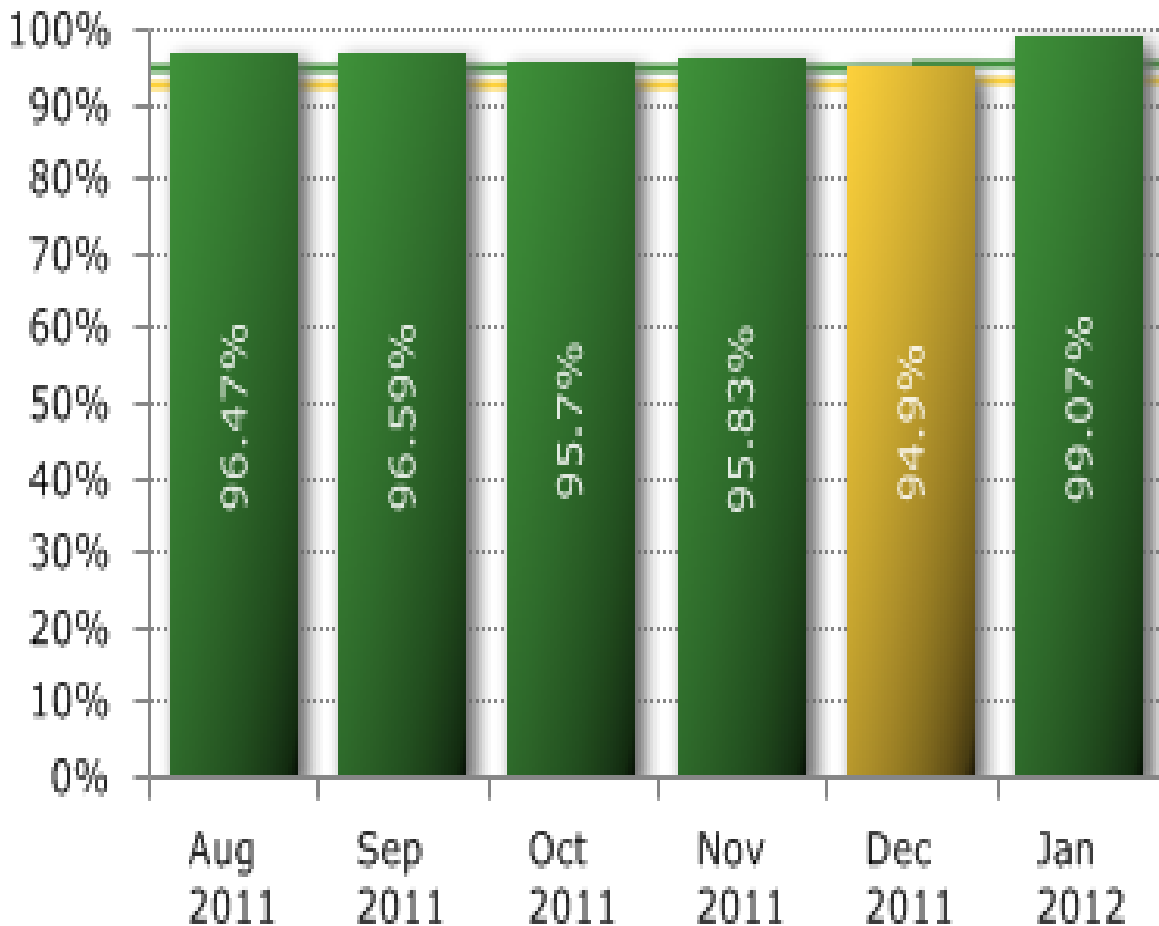
Diabetes HgA1C Screening = Percent of patients, age 18-75, with Type I or Type II diabetes, with at least one A1C test during the past year

Asthma = percentage of MTF enrollees, ages 5-56, with persistent asthma who are prescribed medications considered acceptable as a primary therapy for the long-term control of asthma

Chlamydia Screening = Percentage of women, age 16-25, that are sexually active and have had Chlamydia screening in the past 12 months

ASTHMA

90th MED GRP-F.E. WARREN - Appropriate Meds for Asthmatics - Total - HEDIS - (4/5/2012)



2011 Benchmarks: 90th - 95.1%, 50th - 92.6% | 2012 Benchmarks: 90th - 95.7%, 50th - 93.2% | As of JAN 2012 data: Only TRICARE Prime Enrollees are included, and continuous enrollment requires 11 of 12 month

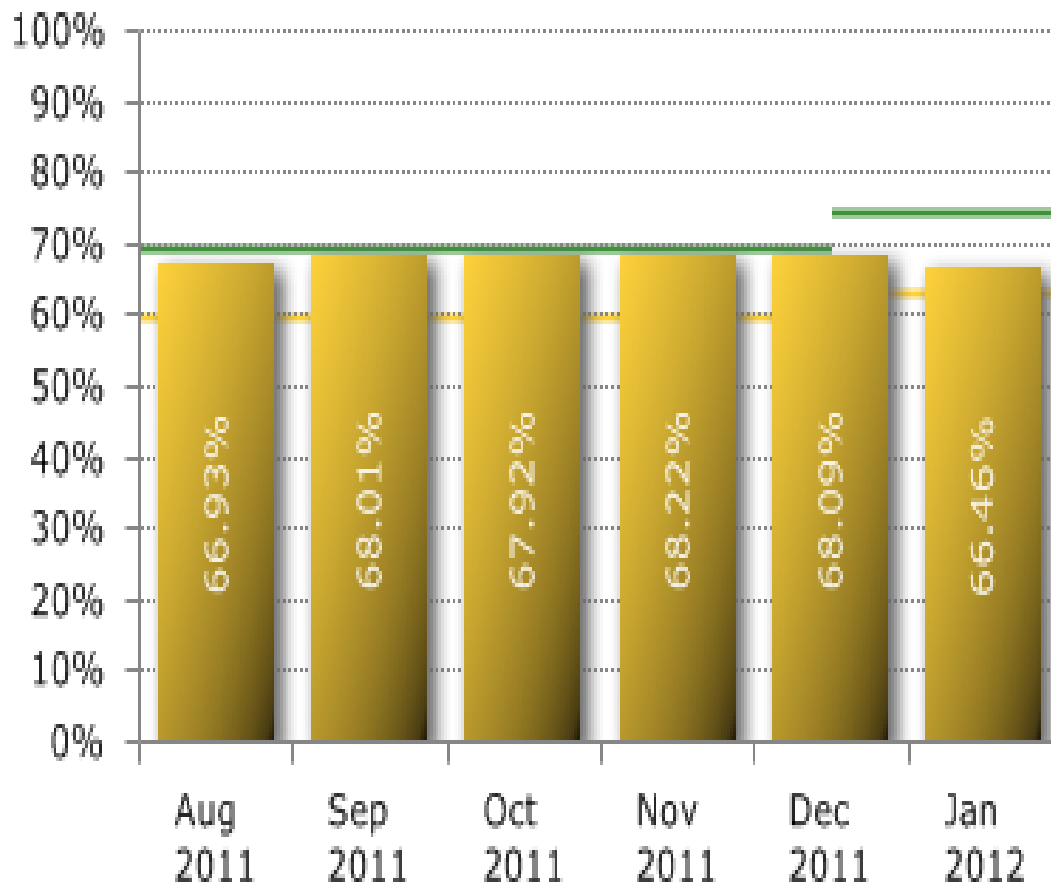
Green = Excellent

Yellow = Satisfactory

Red = Poor

Colon Cancer Screening

90th MED GRP-F.E. WARREN - Colorectal Cancer Screening - HEDIS - (4/5/2012)



2011 Benchmarks: 90th - 69.6%, 50th - 59.4% | 2012 Benchmarks: 90th - 74.2%, 50th - 63.2% | As of JAN 2012 data: Only TRICARE Prime Enrollees are included, and continuous enrollment requires 11 of 12 month

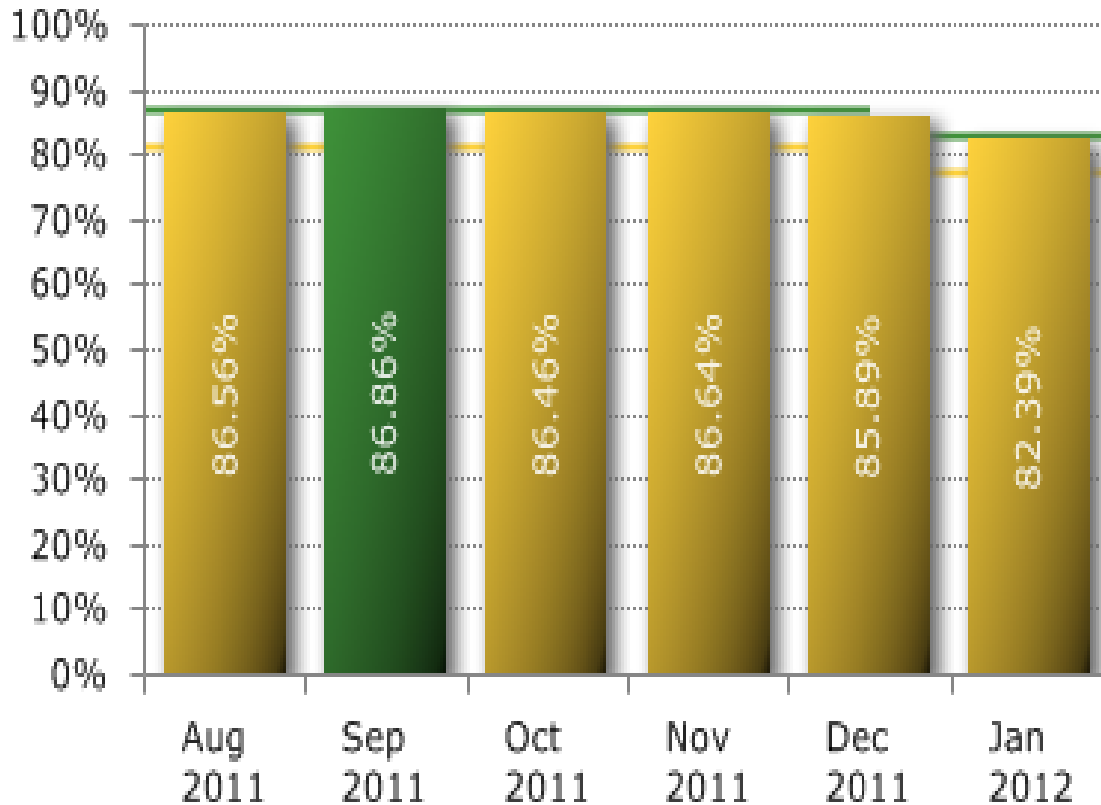
Green = Excellent

Yellow = Satisfactory

Red = Poor

Cervical Cancer Screening

90th MED GRP-F.E. WARREN - Cervical Cancer Screening - HEDIS - (4/5/2012)



2011 Benchmarks: 90th - 86.7%, 50th - 81.4% | 2012 Benchmarks: 90th - 83.2%, 50th - 77.2% | As of JAN 2012 data: Only TRICARE Prime Enrollees are included, and continuous enrollment requires 11 of 12 month

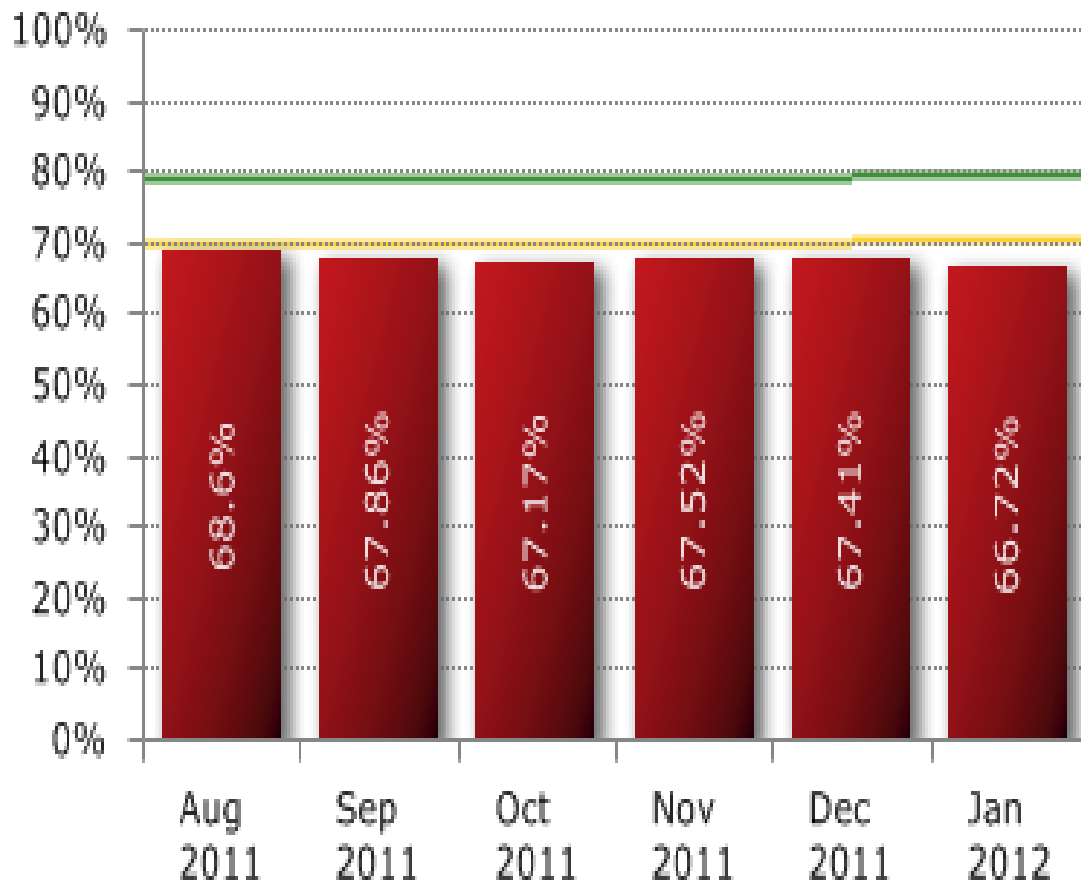
Green = Excellent

Yellow = Satisfactory

Red = Poor

Breast Cancer Screening Total

90th MED GRP-F.E. WARREN - Breast Cancer Screening -
Total - HEDIS - (4/5/2012)



2011 Benchmarks: 90th - 78.7%, 50th - 70.0% | 2012 Benchmarks:
90th - 79.5%, 50th - 70.6% | As of JAN 2012 data: Only TRICARE
Prime Enrollees are included, and continuous enrollment requires 11
of 12 month

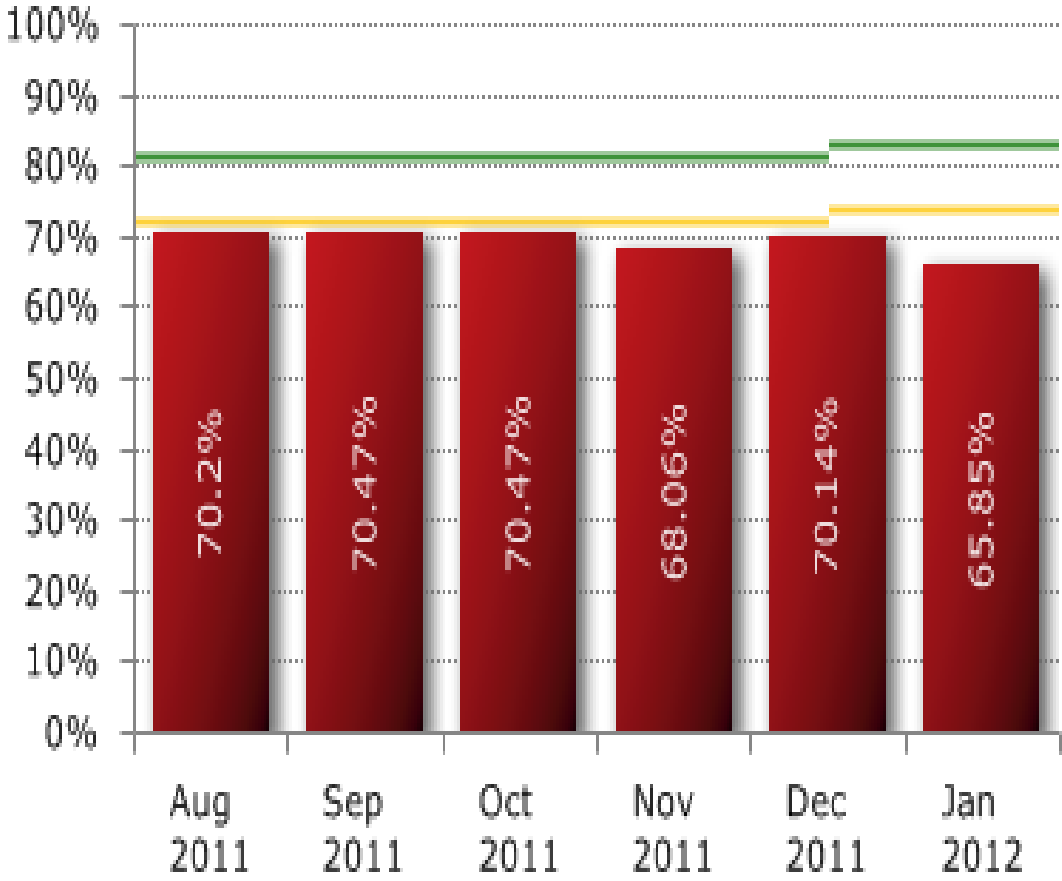
Green = Excellent

Yellow = Satisfactory

Red = Poor

Diabetes Hemoglobin A1C <9%

90th MED GRP-F.E. WARREN - Diabetes HgA1C <=9
Control - HEDIS - (4/5/2012)



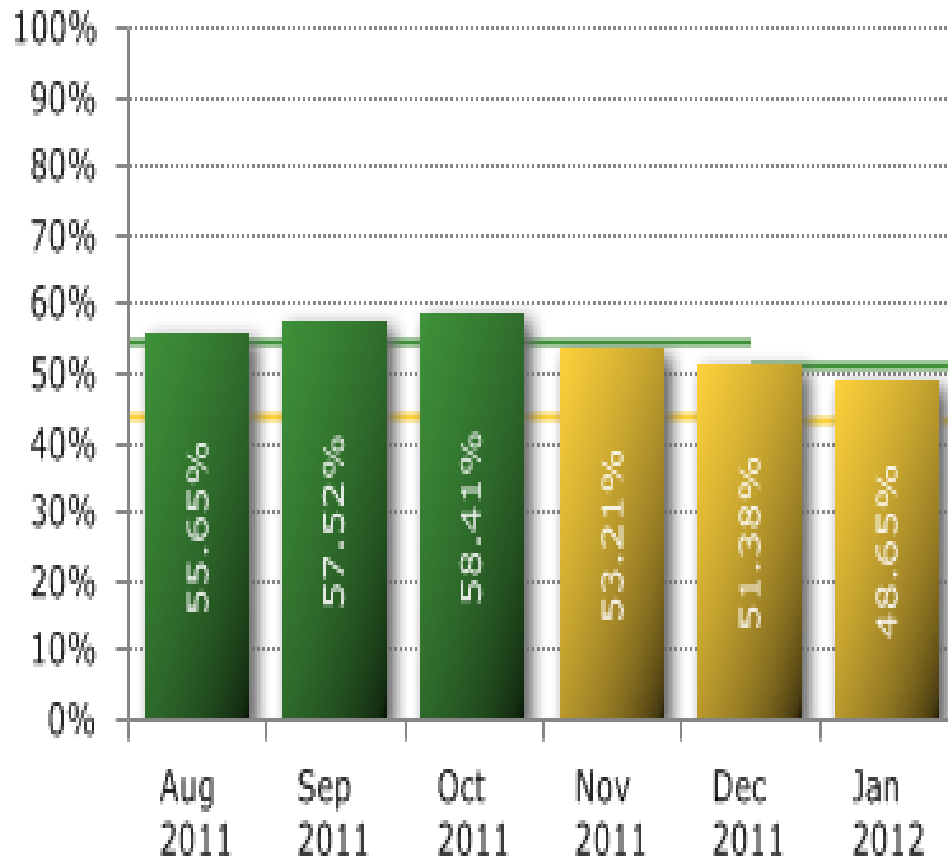
Green = Excellent

Yellow = Satisfactory

Red = Poor

Hemoglobin A1C <7%

90th MED GRP-F.E. WARREN - Diabetes HgA1C <7 Good
Ctrl no Comorb - HEDIS - (4/5/2012)



2011 Benchmarks: 90th - 54.3%, 50th - 43.7% | 2012 Benchmarks:
90th - 51.0%, 50th - 43.1% | As of JAN 2012 data: Only TRICARE
Prime Enrollees are included, and continuous enrollment requires 11
of 12 month

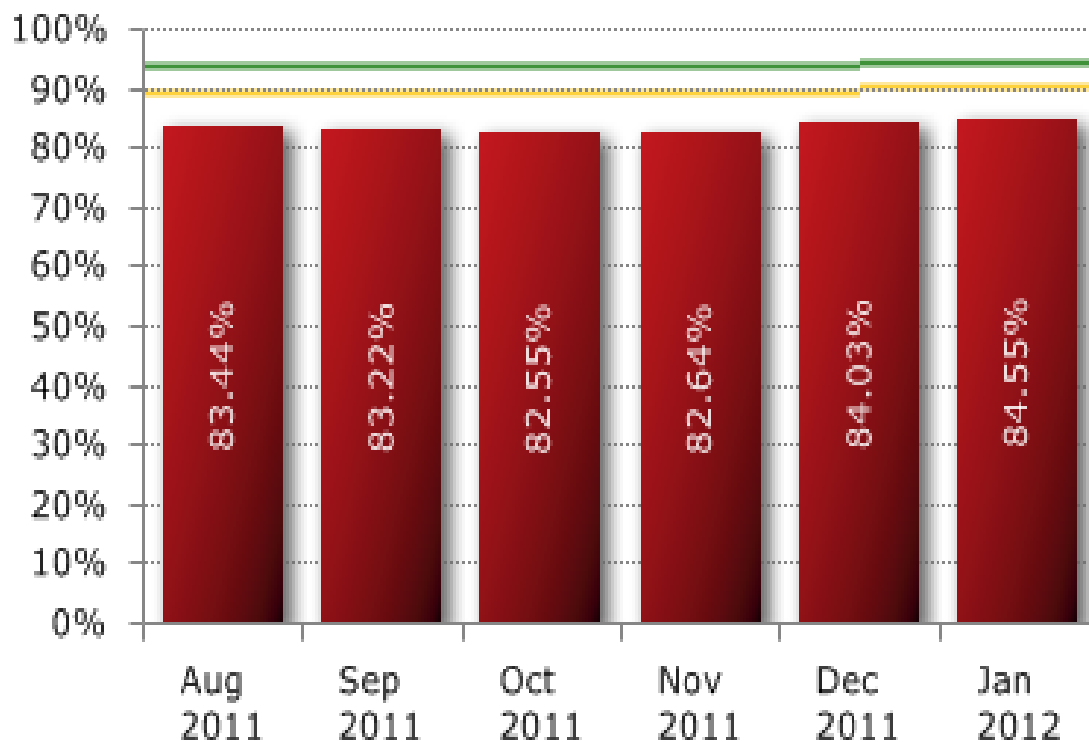
Green = Excellent

Yellow = Satisfactory

Red = Poor

Diabetes Hemoglobin A1C Screening

90th MED GRP-F.E. WARREN - Diabetes HgA1C Screening
- HEDIS - (4/5/2012)



2011 Benchmarks: 90th - 93.7%, 50th - 89.0% | 2012 Benchmarks:
90th - 94.2%, 50th - 90.1% | As of JAN 2012 data: Only TRICARE
Prime Enrollees are included, and continuous enrollment requires 11
of 12 month

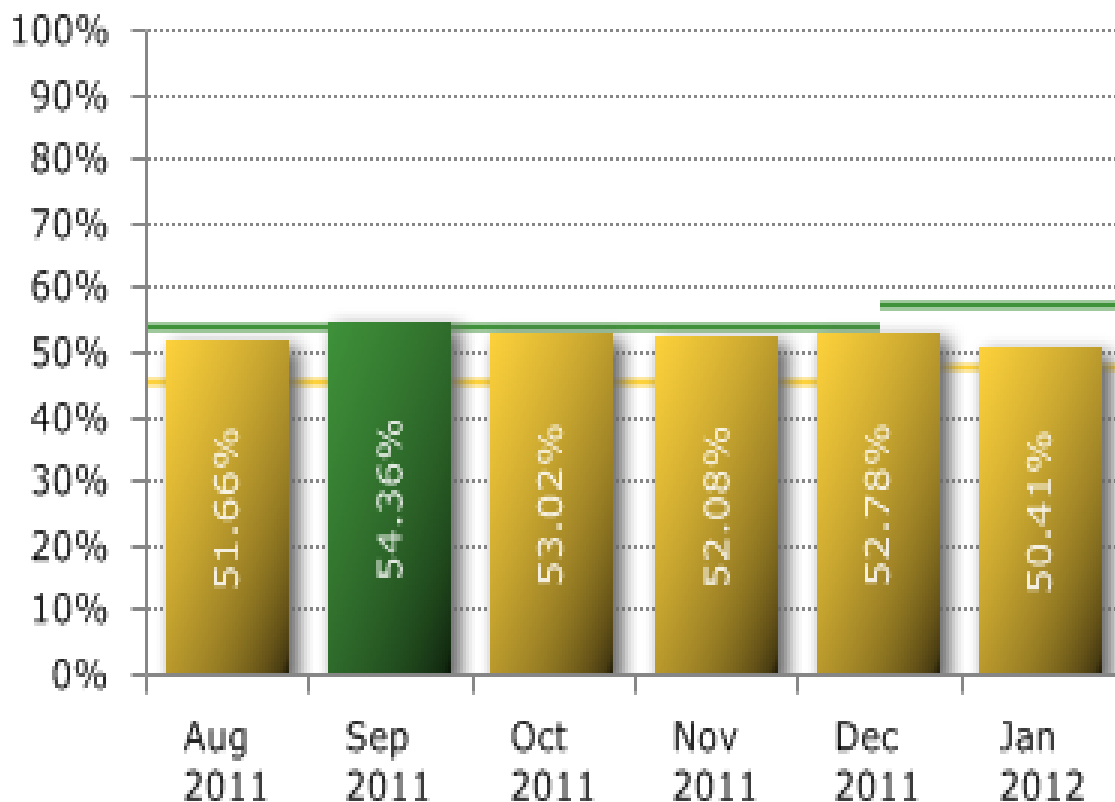
Green = Excellent

Yellow = Satisfactory

Red = Poor

Diabetic LDL Cholesterol Control

90th MED GRP-F.E. WARREN - Diabetes LDL Control - HEDIS - (4/5/2012)



2011 Benchmarks: 90th - 53.9%, 50th - 45.3% | 2012 Benchmarks: 90th - 57.2%, 50th - 48.0% | As of JAN 2012 data: Only TRICARE Prime Enrollees are included, and continuous enrollment requires 11 of 12 month

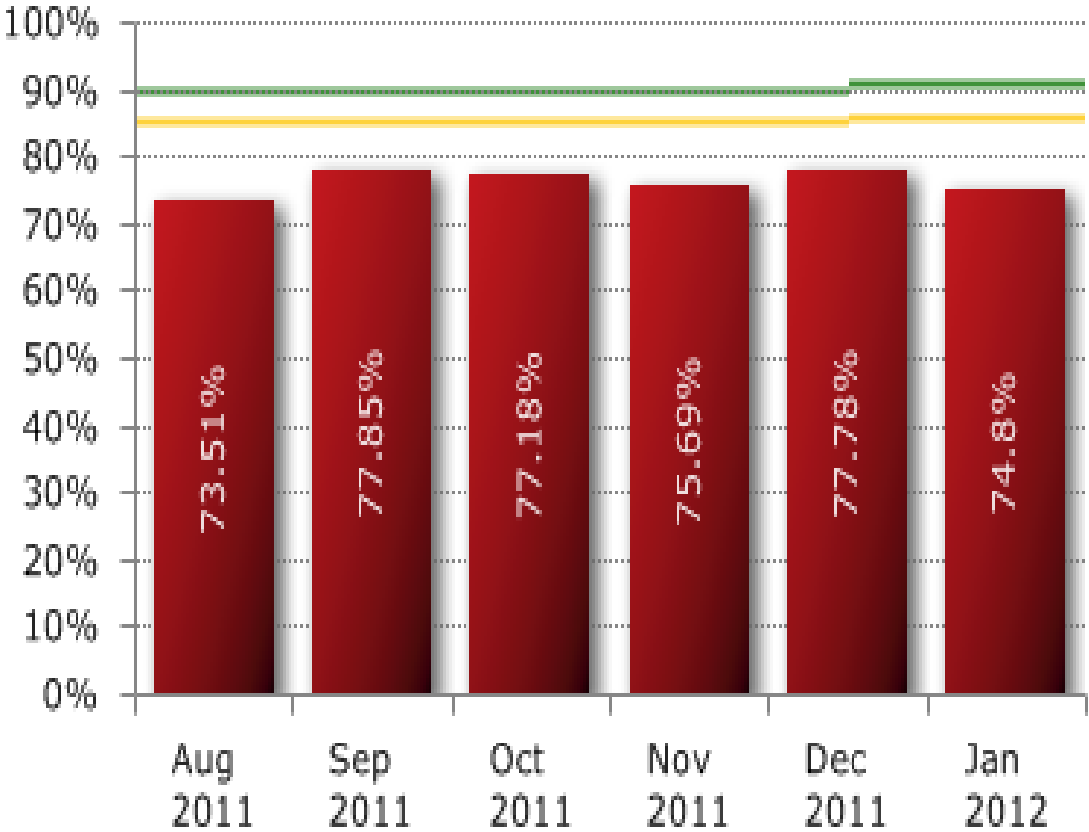
Green = Excellent

Yellow = Satisfactory

Red = Poor

Diabetic Cholesterol Screening

90th MED GRP-F.E. WARREN - Diabetes LDL Screening - HEDIS - (4/5/2012)



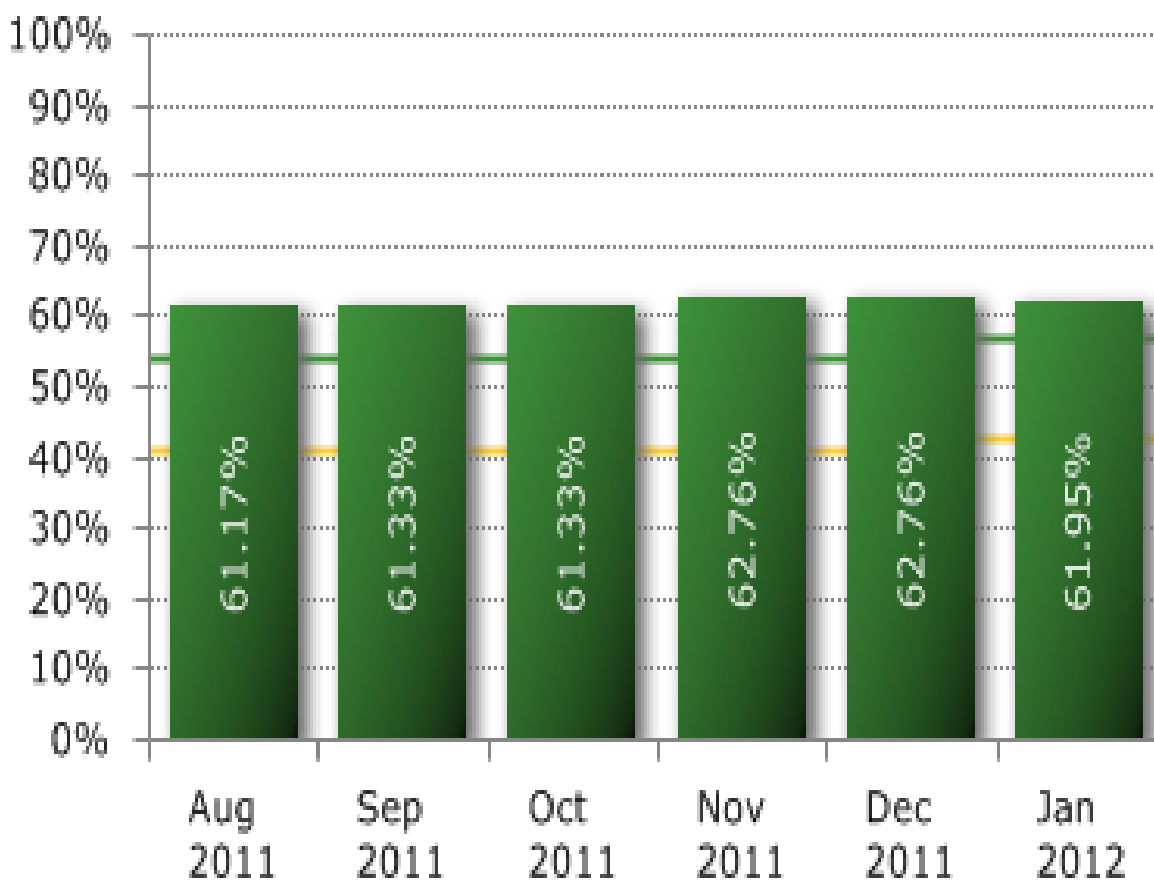
Green = Excellent

Yellow = Satisfactory

Red = Poor

Chlamydia Screening

90th MED GRP-F.E. WARREN - Chlamydia Screening -
Total - HEDIS - (4/5/2012)



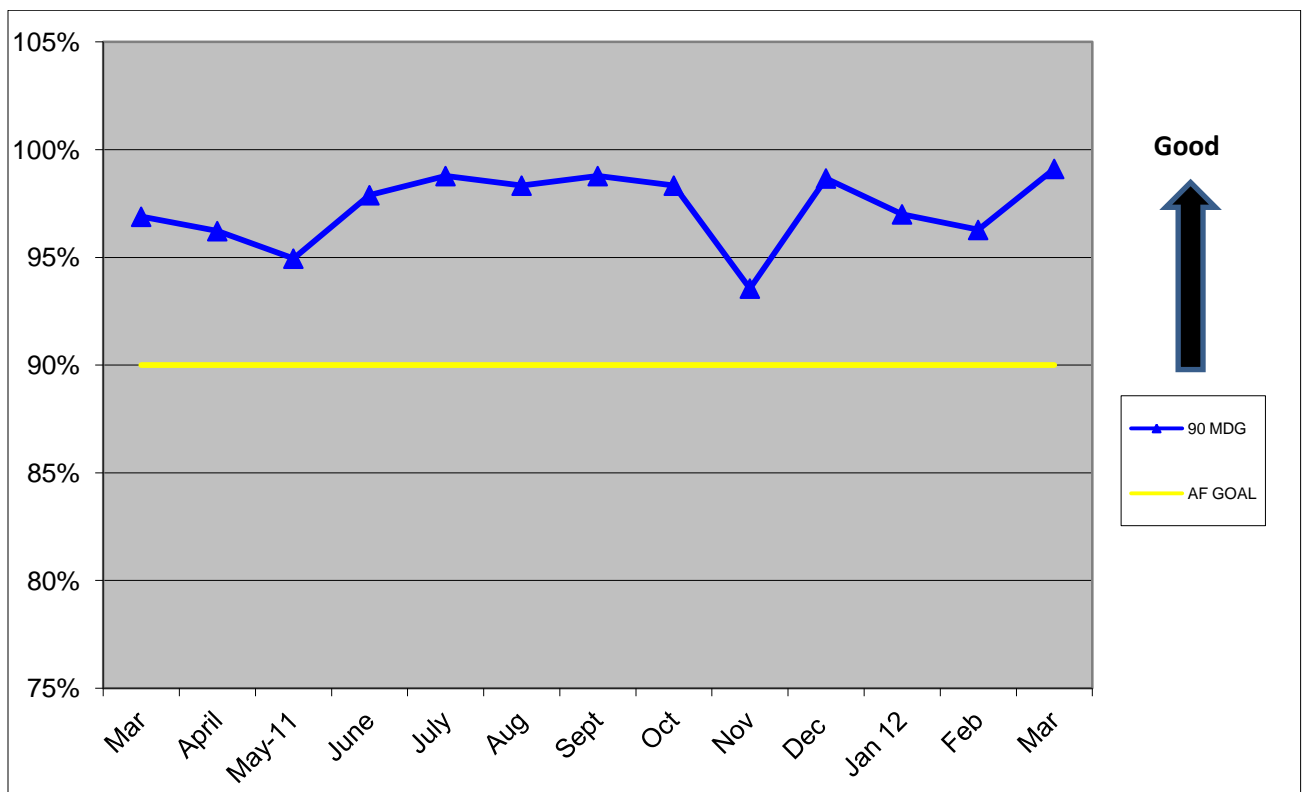
2011 Benchmarks: 90th - 53.9%, 50th - 41.0% | 2012 Benchmarks:
90th - 56.7%, 50th - 42.5% | As of JAN 2012 data: Only TRICARE
Prime Enrollees are included, and continuous enrollment requires 11
of 12 month

Green = Excellent

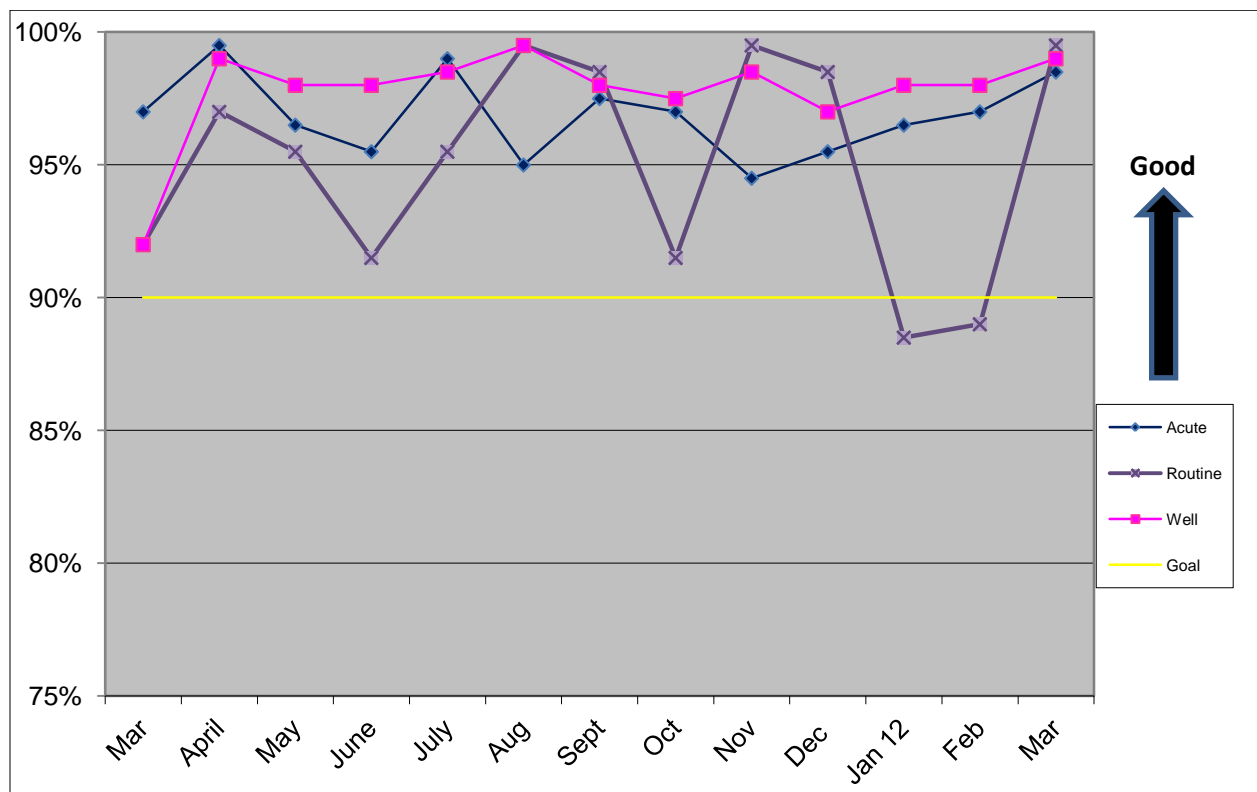
Yellow = Satisfactory

Red = Poor

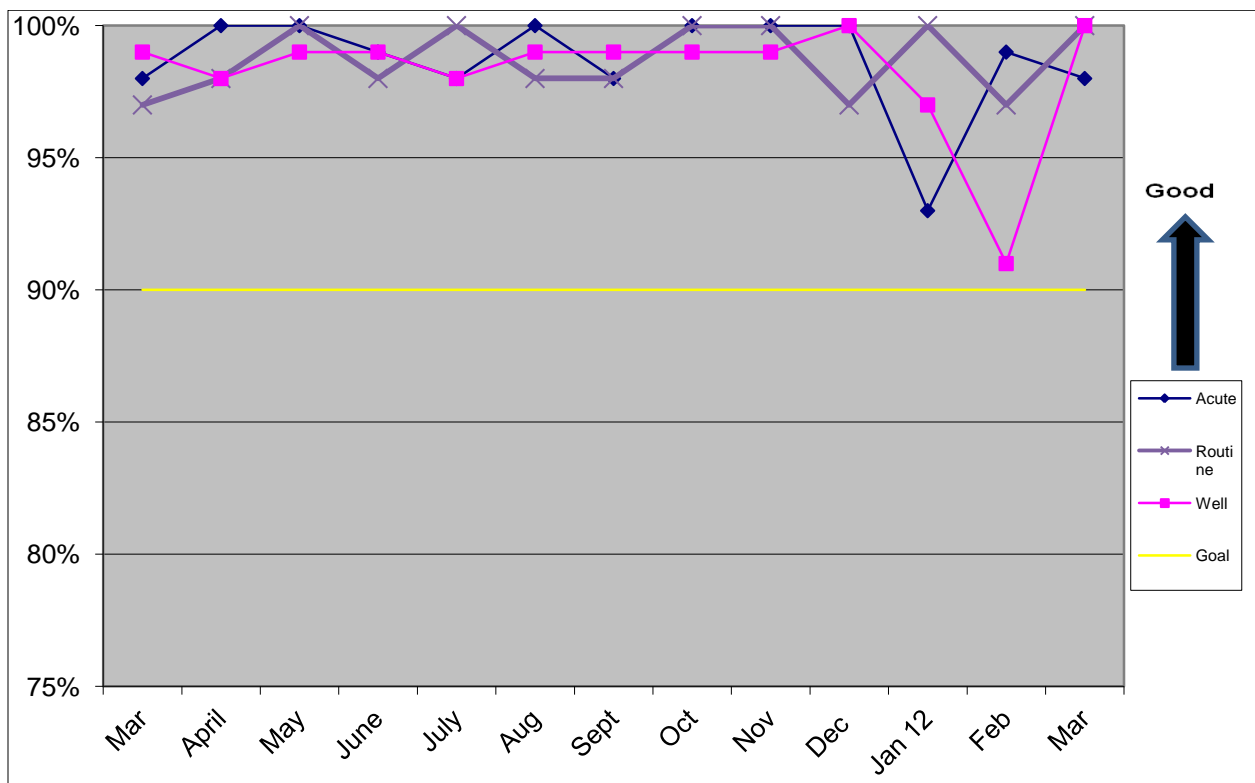
Access To Care: Overall MDG



Access To Care: Family Health Clinic



Access To Care: Pediatrics



Access To Care: Flight Medicine

