

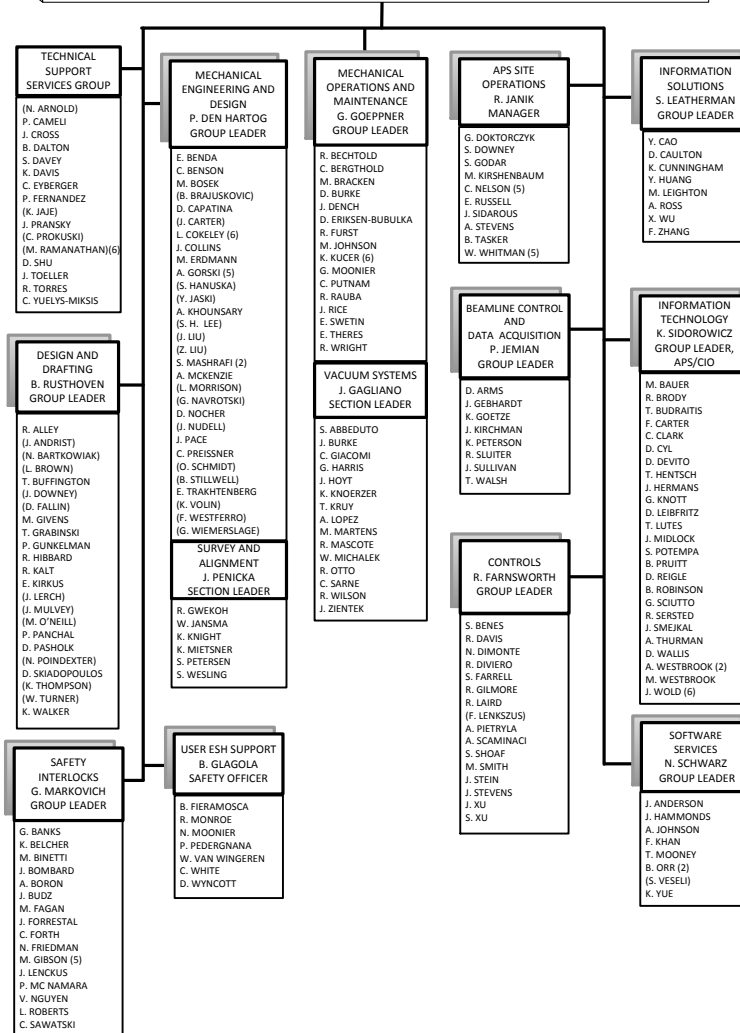
APS ENGINEERING SUPPORT DIVISION
W. RUZICKA
 DIVISION DIRECTOR
 EXECUTIVE SECRETARY L. DEVITO

G. PILE
ASSOCIATE DIVISION DIRECTOR

J. MACLEAN
ASSOCIATE DIVISION DIRECTOR

ASSISTANT DIVISION DIRECTOR: J. HLAVACIK, D. FERGUSON
 QA ENGINEERING SPECIALIST

ESH COORDINATOR: E. CHANG



EMPLOYEES MATRIXED ≥ 50% TO APS
UPGRADE ARE LISTED IN HOME DIVISION
WITH NAME IN PARENTHESIS

- KEY:
- (1) INTERIM
 - (2) STUDENT
 - (3) POSTDOCTORAL
 - (4) OTHER DIVISION
 - (5) S.T.A.
 - (6) MULTIPLE ASSIGNMENT
 - (7) CONTRACT PERSONNEL
 - (8) VISITING FACULTY/SCIENTIST
 - (9) LEAVE OF ABSENCE
 - (10) EMERITUS

EFFECTIVE : February 1, 2013

William G. Ruzicka

1/29/13

APPROVED: W. Ruzicka
Director

DATE