

Know your way around the Alaska Shore Station Database


The screenshot shows the NOAA Fisheries Alaska Regional Office website. The header includes the NOAA logo, 'NOAA Fisheries', 'NATIONAL MARINE FISHERIES SERVICE ALASKA REGIONAL OFFICE', and a search bar. The main content area is titled 'Alaska Shore Station Database' and contains an introduction, a photograph of a shore station transect, and a list of 'Access Shore Stations' and 'Related Databases'. A red arrow points to the link '>> [Go to Shore Station Database](#)'.

NOAA Fisheries NATIONAL MARINE FISHERIES SERVICE ALASKA REGIONAL OFFICE Search

Alaska Shore Station Database

Alaska Shore Station Database

Introduction The Alaska Shore Station Database is a compilation of hundreds of intertidal sites that were visited and evaluated throughout the coastal waters of Alaska. This website is a pilot project that focuses on shore station data collected in the Kodiak Island region with other regions becoming available soon.



Shore Station transect in Kodiak

Shore station survey data include observed species and their assemblages, geomorphic features such as sediment substrates and forms, beach length, slope and specific elevation profiles, and station photo documentation.

This online database has been designed to provide easy access to Shore Station data via [queryable](#) displays of stations at local and regional geographic scales and the ability to download species lists and photos.

The ground stations are 'point features' that are spatially linked to the Alaska [ShoreZone](#) Arc Server database on the web. Due to the expense of accessing many of Alaska's remote coastal areas, shore station data were often collected opportunistically and, thus, the sites were not selected in a statistically random manner. However, every attempt was made to choose sites that encompassed the range of observed coastal habitats and wave exposures.. >> [more](#)

Access Shore Stations

>> [Go to Shore Station Database](#)

Related Databases

>> [Alaska ShoreZone](#)

>> [Alaska Nearshore Fish Atlas](#)

>> [Seaweeds of Alaska](#)

SUPPORTING MATERIALS

>> [Quick guide to database](#)

>> [metadata](#)

Site Map | Disclaimer | Privacy Policy | Notice | FOIA | Webmaster

Click here to enter database



Know your way around the Alaska Shore Station Database

Alaska ShoreZone



[Disclaimer](#)

[Privacy Policy](#)

[ShoreZone Page](#)

[Help](#)

[Metadata](#)

[Contact](#)

Map Location: 126° 4.657' W 67° 26.444' N

Dynamic Mapping Frame

Tools

- Zoom In
- Zoom Out
- Pan
- Full Extent
- Back
- Forward
- Query

Mapping Tools Panel

Shore Station -- Search Database

Regions

Locale Groups

Stations

Biota

Biobands

Query Database Panel

Shore Stations Home

Site Settings

Start Over

ShoreZone

Shore Stations

Fish Atlas

Layers

- Query Layers
- ShoreZone Layers
- Shore Station Layers
- Fish Atlas Layers
- Virtual Earth
- Base Layers

Integrated mapping layers

Shore Stations: Alaska Regions

All Regions

Region	Species List
[all Alaska regions]	
Kenai Peninsula	
Katmai Coast	
Cook Inlet	
Kodiak Island	
Southeast Alaska	
Prince William Sound	

Download Species List Panel

Database Portal Panel

Note: all "Panels" can be resized and moved around the desktop except mapping frame.

**How can I quickly download
species lists from the whole
database or a region in
Alaska?**

Know your way around the Alaska Shore Station Database

Alaska ShoreZone



[Disclaimer](#)

[Privacy Policy](#)

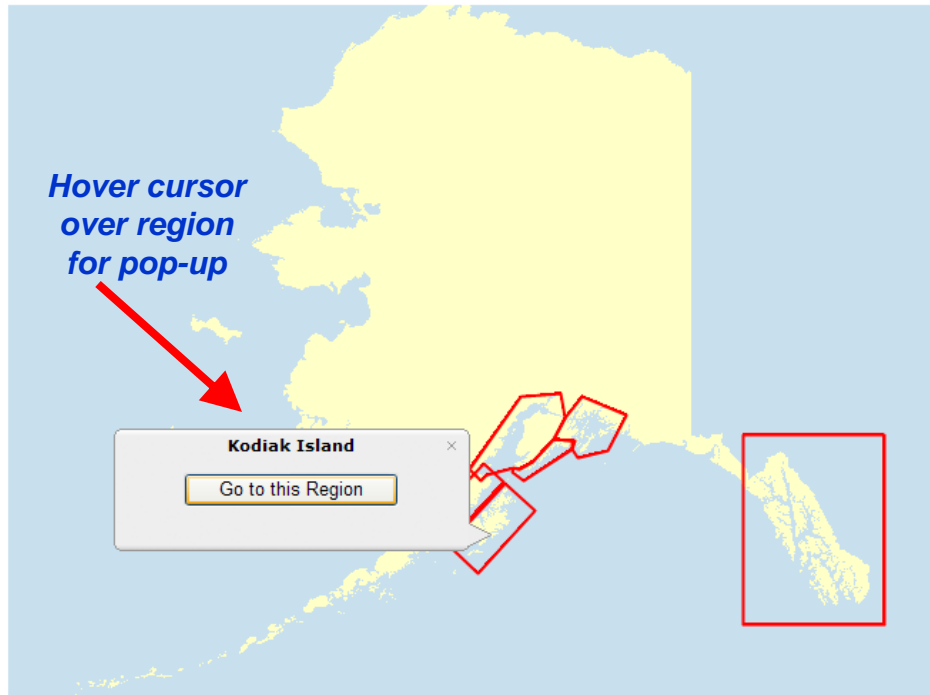
[ShoreZone Page](#)

[Help](#)

[Metadata](#)

[Contact](#)

Map Location: 165° 6.063' W 58° 32.335' N



Tools

- Zoom In
- Zoom Out
- Pan
- Full Extent
- Back
- Forward
- Query

Shore Station -- Search Database

Regions

- [Select a Region]
- [all Alaska regions]
- Kenai Peninsula
- Katmai Coast
- Cook Inlet
- Kodiak Island
- Southeast Alaska
- Prince William Sound



Or:
choose region
from query list

Locale Groups

Stations

Shore Stations: Alaska Regions

All Regions

Region	Species List
[all Alaska regions]	
Kenai Peninsula	
Katmai Coast	
Cook Inlet	
Kodiak Island	
Southeast Alaska	
Prince William Sound	

Click on species
list icon and
download into
spreadsheet

Site Settings

Tabs

ShoreZone

Shore Stations

Fish Atlas

Start Over

Layers

- Query Layers
- ShoreZone Layers
- Shore Station Layers
- Fish Atlas Layers
- Virtual Earth
- Base Layers

Know your way around the Alaska Shore Station Database

Alaska ShoreZone



[Disclaimer](#)

[Privacy Policy](#)

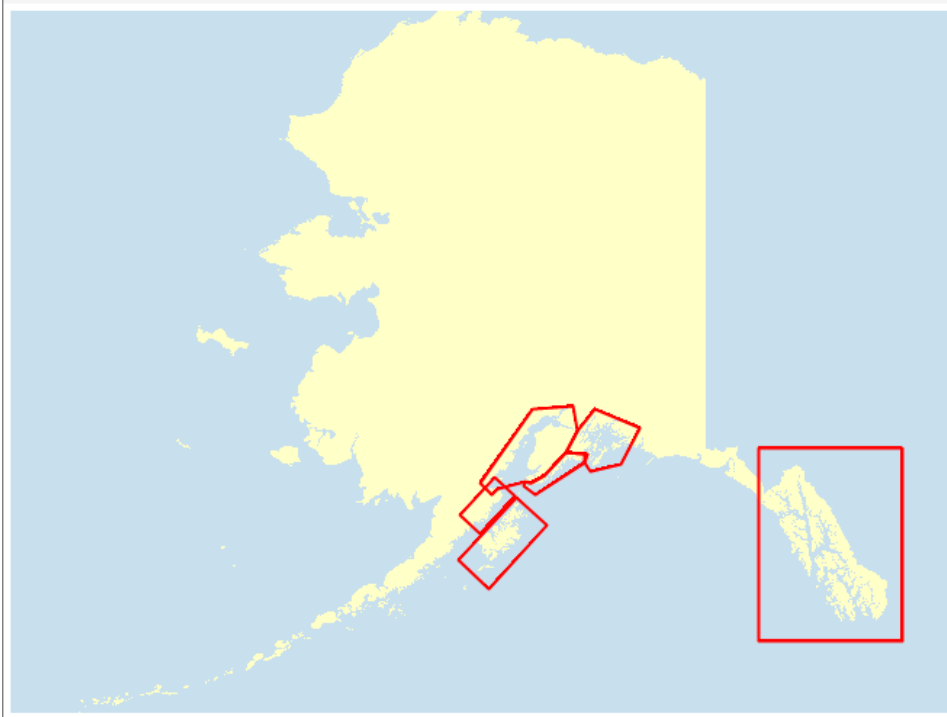
[ShoreZone Page](#)

[Help](#)

[Metadata](#)

[Contact](#)

Map Location: 126° 41.571' W 64° 50.903' N



Tools

- Zoom In
- Zoom Out
- Pan
- Full Extent
- Back
- Forward
- Query

Shore Station -- Search Database

- Regions
- Locale Groups
- Stations
- Biota
- Biobands



Shore Stations Home

Shore Stations: Alaska Regions

All Regions

Region	Species List
[all Alaska regions]	
Kenai Peninsula	
Katmai Coast	
Cook Inlet	
Kodiak Island	
Southeast Alaska	
Prince William Sound	

Download all species or toggle only algae or invertebrate species

Site Settings

Tabs

- ShoreZone
- Shore Stations
- Fish Atlas

Start Over

Layers

- Query Layers
- ShoreZone Layers
- Shore Station Layers
- Fish Atlas Layers
- Virtual Earth
- Base Layers

Shore Stations: Kodiak Island Biota

Kodiak Island Biota

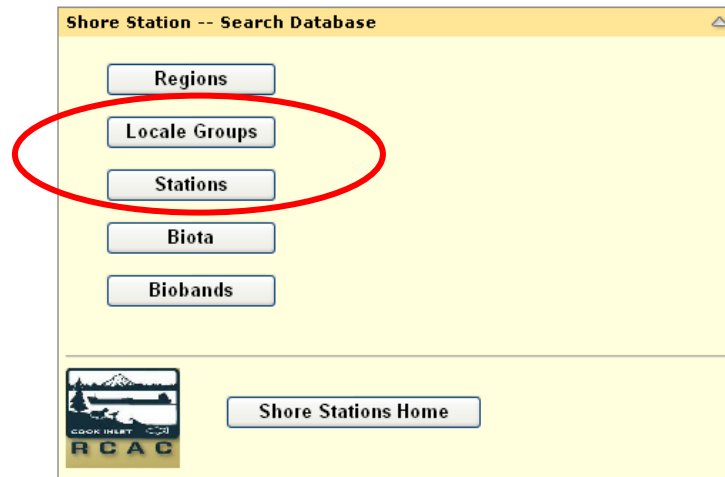
Scientific Name	Common Name
Abietinaria sp.	branched hydroid
Acmaea mitra	white capped limpet
Acrosiphonia arcta	filamentous green algae
Acrosiphonia coalita	filamentous green algae
Acrosiphonia duriuscula	filamentous green algae
Acrosiphonia sp.	filamentous green algae
Agarum clathratum	sieve kelp
Agarum sp.	sieve kelp
Ahnfeltia fastigiata	bushy Ahnfelt's seaweed
Alaria fistulosa	dragon kelp
Alaria marginata	ribbon kelp

Download

Rows restricted to:

- Algae and other plants
- Invertebrates and other animals
- All Species

How can I query the database for information on a specific Shore Station?



Know your way around the Alaska Shore Station Database

Alaska ShoreZone



[Disclaimer](#)

[Privacy Policy](#)

[ShoreZone Page](#)

[Help](#)

[Metadata](#)

[Contact](#)

Map Location: 153° 54.772' W 57° 44.623' N

Hover over locale for pop-up

Click for quick species list

Tools

- Zoom In
- Zoom Out
- Pan
- Full Extent
- Back
- Forward
- Query

Shore Station -- Search Database

Regions

Locale Groups

[Select a Locale]

Stations

Biota

Biobands

select a locale from list Or Select a station ID code

Site Settings

Start Over

Layers

- Query Layers
- ShoreZone Layers
- Shore Station Layers
- Fish Atlas Layers
- Virtual Earth
- Base Layers

Shore Stations: Alaska Regions

Region	Species List
[All Alaska regions]	
Kenai Peninsula	
Katmai Coast	
Cook Inlet	
Kodiak Island	
Southeast Alaska	
Prince William Sound	

Shore Stations: Kodiak Island Locales

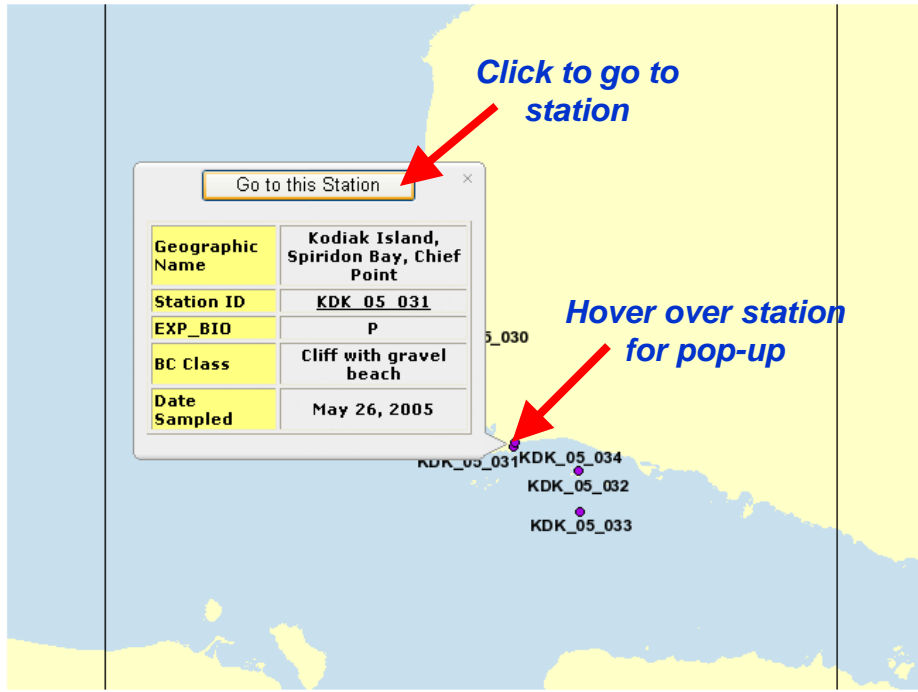
Kodiak	1	
North Afognak Island	5	
Northwest Afognak Island	4	
Perevalnie Islands	7	
Raspberry Strait	7	
Russian Harbor	6	
Sitkinak Island	8	
South Uganik Island	7	
Southeast Afognak Island	4	
Spruce Island	4	
Three Saints Bay	6	
Ugak Bay	7	
West Shuyak Island	6	
West Spiridon Bay	7	

Or: click on locale from region table

Know your way around the Alaska Shore Station Database



Map Location: 153° 59.817' W 57° 46.356' N



Tools

- Zoom In
- Zoom Out
- Pan
- Full Extent
- Back
- Forward
- Query

Shore Station -- Search Database

Regions

Locale Groups

[Select a Locale]

Stations

Biota

Biobands

Shore Stations: Kodiak Island Locales

Kodiak	1	■
North Afognak Island	5	■
Northwest Afognak Island	4	■
Perevalnie Islands	7	■
Raspberry Strait	7	■
Russian Harbor	6	■
Sitkinak Island	8	■
South Uganik Island	7	■
Southeast Afognak Island	4	■
Spruce Island	4	■
Three Saints Bay	6	■
Ugak Bay	7	■

Site Settings

Start Over

Layers

- Query Layers
- ShoreZone Layers
- Shore Station Layers
- Fish Atlas Layers
- Virtual Earth
- Base Layers

Shore Stations: Alaska Regions

All Regions

Region	Species List
[all Alaska regions]	■
Kenai Peninsula	
Katmai Coast	
Cook Inlet	
Kodiak Island	
Southeast Alaska	
Prince William Sound	

Shore Stations: West Spiridon Bay Stations

West Spiridon Bay - Kodiak Island

List of stations within Locale

Download Back

Geographic Name	Station ID	EXP_BIO	BC Class	Date Sampled
Kodiak Island, North of Spiridon Bay	KDK_05_028	SE	Cliff with gravel beach	May 26, 2005
Kodiak Island, North of Spiridon Bay	KDK_05_029	SE	Ramp w gravel & sand beach, wide	May 26, 2005
Kodiak Island, North of Spiridon Bay	KDK_05_030	SE	Ramp with gravel beach	May 26, 2005
Kodiak Island, Spiridon Bay, Chief Point	KDK_05_031	P	Cliff with gravel beach	May 26, 2005
Kodiak Island, Spiridon Bay, Bird Rocks	KDK_05_032	SP	Cliff with gravel beach	May 26, 2005
Kodiak Island, Spiridon Bay, Bird Rocks	KDK_05_033	SP	Ramp with gravel beach	May 26, 2005
Kodiak Island, Spiridon Bay, Chief Point	KDK_05_034	SP	Sand & gravel flat or fan	May 26, 2005

Or: click on station ID

Know your way around the Alaska Shore Station Database



Map Location: 153° 51.885' W 57° 41.224' N

Tools: Zoom In, Zoom Out, Pan, Full Extent, Back, Forward, Query

Shore Station -- Search Database: Regions, Locale Groups, Stations, Biota, Biobands

Shore Stations Home

Shore Stations: Kodiak Island Locales

Kodiak	1	
North Afognak Island	5	
Northwest Afognak Island	4	
Perevalnie Islands	7	
Raspberry Strait	7	
Russian Harbor	6	
Sitkinak Island	8	
South Uganik Island	7	

Site Settings: Tabs: ShoreZone, Shore Stations, Fish Atlas

Layers: Query Layers, ShoreZone Layers, Shore Station Layers, Fish Atlas Layers, Virtual Earth, Base Layers

Shore Stations: Alaska Regions: All Regions, West Spiridon Bay Stations, West Spiridon Bay - Kodiak Island

Shore Stations: Station KDK_05_031

KDK_05_031; Kodiak Island, Spiridon Bay, Chief Point; 57deg 42.2 N 153deg 53.4 W
Protected; Cliff with gravel beach; May 26, 2005

Scientific Name	Common Name	Abun
Endocladia muricata	filamentous red alga	F
<u>Fucus distichus subsp. evanescens</u>	rockweed	C
Gammaridae	amphipod	C
Gloiopeltis furcata	filamentous red alga	F
Hapalogaster mertensii	hairy crab	F
Hildenbrandia rubra	encrusting red alga	R
Idotea wosnesenskii	kidney eye idotea	F
Lithothamnion/Lithophyllum sp.	red calcareous crust	R
Littorina scutulata	checkered periwinkle	A
Littorina sitkana	Sitka periwinkle	F
Lottia digitalis	ribbed limpet	C

Across-shore PROFILE, PHOTOS, Download, Back

Rows restricted to: Algae and other plants, Invertebrates and other animals, All Species

Include Bioband columns [About biobands](#)

Station Table Header

How do I view photos taken at a Shore Station?

Know your way around the Alaska Shore Station Database



Map Location: 153° 53.1' W 57° 42.037' N



Tools

- Zoom In
- Zoom Out
- Pan
- Full Ext
- Back
- Forward
- Query

Shore Station -- Search Database

Regions

Locale Groups

Shore Stations: Station KDK_05_031 Photos

Photo 1/11

right-click on image to save

Site Settings

Start Over

Shore Stations

Layers

- Query Layers
- ShoreZone Layers
- Shore Station Layers
- Fish Atlas Layers
- Virtual Earth
- Base Layers

Shore Stations: Alaska Regions

Shore Stations: Station KDK_05_031

KDK_05_031; Kodiak Island, Spiridon Bay, Chief Point; 57deg 42.2 N 153deg 53.4 W Protected; Cliff with gravel beach; May 26, 2005

Scientific Name	Common Name	Abun
Agarum clathratum	sieve kelp	R
Alaria marginata	ribbon kelp	F
Analipus japonicus	bottlebrush seaweed	R
Armandia brevis	polychaete worm	F
Balanus crenatus	smooth acorn barnacle	F
Balanus glandula	acorn barnacle	A
Blidingia minima	filamentous green alga	F
Chthamalus dalli	small brown barnacle	C
Cladophora sericea	graceful green hair	A
Constantinea subulifera	cup and saucer red alga	R
Costaria costata	five-ribbed kelp	F

Across-shore PROFILE

PHOTOS

Download

Back

- Rows restricted to:**
- Algae and other plants
 - Invertebrates and other animals
 - All Species

Include Bioband columns
[About biobands](#)

How do I view a diagram of a Shore Station profile?

Know your way around the Alaska Shore Station Database

Alaska ShoreZone



[Disclaimer](#)

[Privacy Policy](#)

[ShoreZone Page](#)

[Help](#)

[Metadata](#)

[Contact](#)

Map Location: 153° 53.127' W 57° 42.144' N



Key definitions to diagram

Shore Station -- Search Database

Regions

Locale Groups

[Select a Locale]

Stations

Shore Stations: Station KDK_05_031 Across-shore Profile

Elevation: 10m, 5.95m, 0, -2m

Total across-shore width: 53.5m

subtidal

Biobands on Profile: Blue Mussel [BMU], Rockweed [FUC], Green Algae [ULV]

Substrate on Profile: Boulder, cobble, pebble; Boulder, cobble, pebble, granule

0m, 10m, 20m, 30m, 40m, 50m

About: [Across-shore profiles](#) [Biobands](#) [Substrate](#)

Site Settings

Start Over

Layers

- Query Layers
- ShoreZone Layers
- Shore Station Layers
- Fish Atlas Layers
- Virtual Earth
- Base Layers

Shore Stations: Alaska Regions

Shore Stations: Station KDK_05_031

KDK_05_031; Kodiak Island, Spiridon Bay, Chief Point; 57deg 42.2 N 153deg 53.4 W
Protected; Cliff with gravel beach; May 26, 2005

Scientific Name	Common Name	Abun
Agarum clathratum	sieve kelp	R
Alaria marginata	ribbon kelp	F
Analipus japonicus	bottlebrush seaweed	R
Armandia brevis	polychaete worm	F
Balanus crenatus	smooth acorn barnacle	F
Balanus glandula	acorn barnacle	A
Blidingia minima	filamentous green alga	F
Chthamalus dalli	small brown barnacle	C
Cladophora sericea	graceful green hair	A
Constantinea subulifera	cup and saucer red alga	R
Costaria costata	five-ribbed kelp	F

[Across-shore PROFILE](#) Download

PHOTOS Back

Rows restricted to:

- Algae and other plants
- Invertebrates and other animals
- All Species

Include Bioband columns [About biobands](#)

Click to open station profile

How do I sort through a Shore Station species list?

Know your way around the Alaska Shore Station Database

Alaska ShoreZone



[Disclaimer](#)

[Privacy Policy](#)

[ShoreZone Page](#)

[Help](#)

[Metadata](#)

[Contact](#)

http://mapping.fakr.noaa.gov/ShoreStationDemo/makeCSV.aspx - Windows Interne...

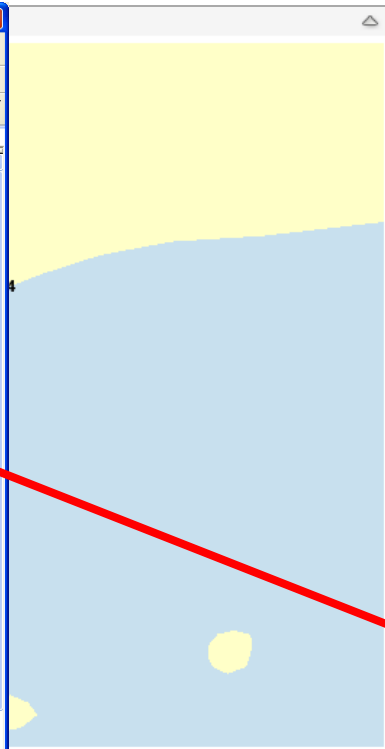
http://mapping.fakr.noaa.gov/ShoreStat

File Edit View Insert Format Tools Data Go To Favorites Help

http://mapping.fakr.noaa.gov/ShoreStatio...

Alaska Shore Stations		
A	B	C
1	Alaska Shore Stations	
2		
3	KDK_05_031	
4	Kodiak Island, Spiridon Bay, Chief Point	
5	57deg 42.2 N 153deg 53.4 W	
6	Protected	
7	Cliff with gravel beach	
8	26-May-05	
9	All Species	
10		
11	Scientific Name	Common Name Abun
12	Agarum clathratum	sieve kelp R
13	Alaria marginata	ribbon kelp F
14	Analipus japonicus	bottlebrush seaweed R
15	Armandia brevis	polychaete worm F
16	Balanus crenatus	smooth acorn barnacle F
17	Balanus glandula	acorn barnacle A
18	Blidingia minima	filamentous green alga F
19	Chthamalus dalli	small brown barnacle C
20	Cladophora sericea	graceful green hair A
21	Constantinea subulifera	cup and saucer red alga R
22	Costaria costata	five-ribbed kelp F
23	Cryptosiphonia woodii	filamentous red alga F
24	Cucumaria miniata	orange sea cucumber F
25	Cucumaria vegae	sea cucumber F
26	Cymathære triplicata	three-ribbed kelp F
27	Desmarestia aculeata	witch's hair brown alga F
28	Desmarestia viridis	stringy acid kelp F
29	Endocladia muricata	filamentous red alga F
30	Fucus distichus subsp. evanescens	rockweed C
31	Gammaridae	amphipod C
32	Gloiopeltis furcata	filamentous red alga F
33	Hapalogaster mertensii	hairy crab F
34	Hildenbrandia rubra	encrusting red alga R
35	Idotea wosnesenskii	kidney eye idotea F
36	Lithothamnion/Lithophyllum sp.	red calcareous crust R
37	Littorina scutulata	checkered periwinkle A
38	Littorina sitkana	Sitka periwinkle F
39	Lottia digitalis	ribbed limpet C
40	Lottia pelta	shield limpet C
41	Lottiidae	limpet C
42	Mastocarpus papillatus	Turkish washcloth red alga R
43	Mazzaella heterocarpa	Turkish towel red alga R
44	Melanosiphon intestinalis	R
45	Monostroma grevillei	foliose green alga R
46	Mopalia sp.	chiton R
47	Mytilus trossulus	blue mussel C
48	Nemertea	ribbon worm R

Unknown Zone



Tools

- Zoom In
- Zoom Out
- Pan
- Full Ext
- Back
- Forward
- Query

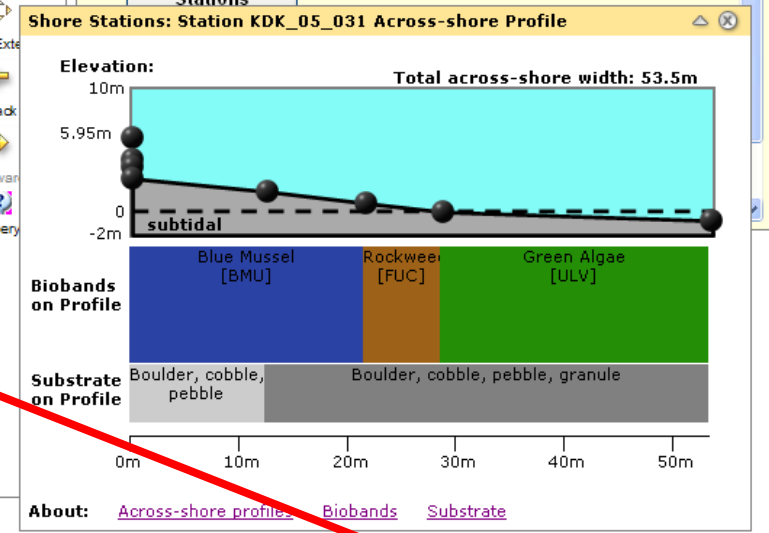
Shore Station -- Search Database

Regions

Locale Groups

[Select a Locale]

Stations



Shore Stations: Alaska Regions

Shore Stations: Station KDK_05_031

KDK_05_031; Kodiak Island, Spiridon Bay, Chief Point; 57deg 42.2 N 153deg 53.4 W
Protected; Cliff with gravel beach; May 26, 2005

[Download sorted table](#)

Scientific Name	Common Name	Abun
Agarum clathratum	sieve kelp	R
Alaria marginata	ribbon kelp	F
Analipus japonicus	bottlebrush seaweed	R
Armandia brevis	polychaete worm	F
Balanus crenatus	smooth acorn barnacle	F
Balanus glandula	acorn barnacle	A
Blidingia minima	filamentous green alga	F
Chthamalus dalli	small brown barnacle	C
Cladophora sericea	graceful green hair	A
Constantinea subulifera	cup and saucer red alga	R
Costaria costata	five-ribbed kelp	F

Across-shore PROFILE

Download

PHOTOS

Back

Rows restricted to:

- Algae and other plants
- Invertebrates and other animals
- All Species

Include Bioband columns
[About biobands](#)

[Toggle options to sort table](#)

Know your way around the Alaska Shore Station Database

Alaska ShoreZone



[Disclaimer](#)

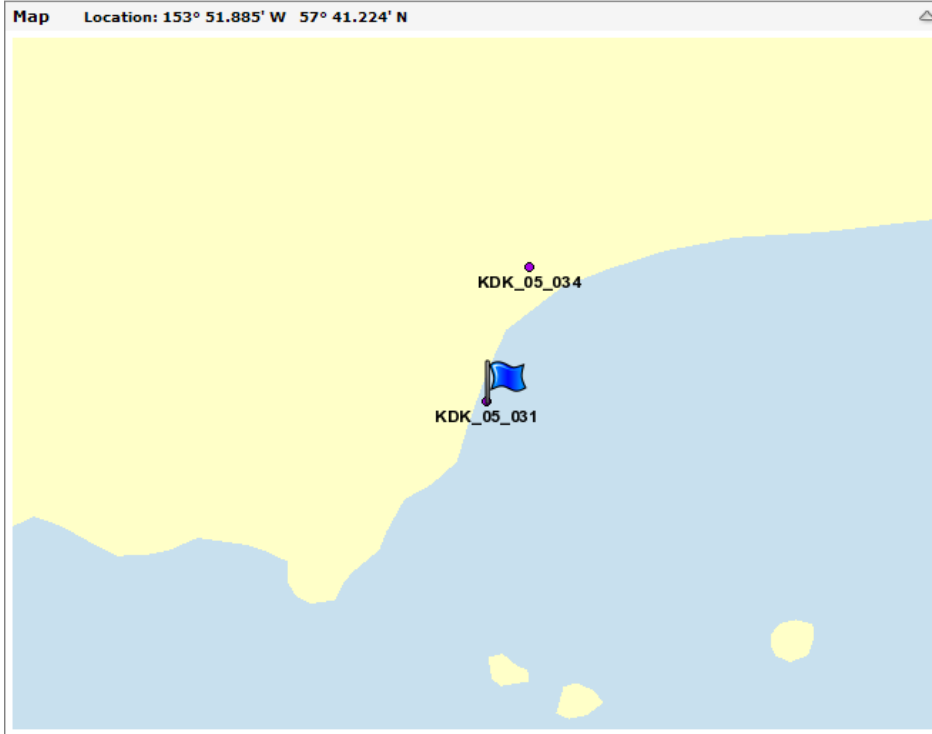
[Privacy Policy](#)

[ShoreZone Page](#)

[Help](#)

[Metadata](#)

[Contact](#)



Tools

- Zoom In
- Zoom Out
- Pan
- Full Extent
- Back
- Forward
- Query

Shore Station -- Search Database

Regions

Locale Groups

Stations

Biota

Biobands

[Shore Stations Home](#)

Shore Stations: Kodiak Island Locales

Locale	Count	Grid
Kodiak	1	
North Afognak Island	5	
Northwest Afognak Island	4	
Perevalnie Islands	7	
Raspberry Strait	7	
Russian Harbor	6	
Sitkinak Island	8	
South Uganik Island	7	

Site Settings

Start Over

Layers

- Query Layers
- ShoreZone Layers
- Shore Station Layers
- Fish Atlas Layers
- Virtual Earth
- Base Layers

Shore Stations: Alaska Regions

All Regions

Shore Stations: West Spiridon Bay Stations

West Spiridon Bay - Kodiak Island

Shore Stations: Station KDK_05_031

KDK_05_031; Kodiak Island, Spiridon Bay, Chief Point; 57deg 42.2 N 153deg 53.4 W
Protected; Cliff with gravel beach; May 26, 2005

Scientific Name	Common Name	Abun
Fucus distichus subsp. evanescens	rockweed	C
Endocladia muricata	filamentous red alga	F
Gammaridae	amphipod	C
Gloiopeltis furcata	filamentous red alga	F
Hapalogaster mertensii	hairy crab	F
Hildenbrandia rubra	encrusting red alga	R
Idotea wosnesenskii	kidney eye idotea	F
Lithothamnion/Lithophyllum sp.	red calcareous crust	R
Littorina scutulata	checkered periwinkle	A
Littorina sitkana	Sitka periwinkle	F
Lottia digitalis	ribbed limpet	C

[Across-shore PROFILE](#)

[PHOTOS](#)

[Download](#)

[Back](#)

Rows restricted to:

- Algae and other plants
- Invertebrates and other animals
- All Species

Include Bioband columns

[About biobands](#)

Click hypertext to go to species description on the web

Know your way around the Alaska Shore Station Database

Seaweeds of Alaska



Home || About Us || Related Links || References



Chlorophyta

Ochrophyta

Rhodophyta

Taxonomic Tree >>

Seagrasses & Misc. Others >>

Habitat Classifications >>

Coastal Regions & Maps >>

Enter Search Terms:

- Genus (i.e. Fucus)
- Species (i.e. Gardneri)
- Common Name (i.e. Rock Weed)
- Phylum (i.e. Ochrophyta)
- All of the above

Search Database

Also search:

Seaweeds of Alaska is sponsored by:



Fucus distichus subsp. *evanescens*

Rockweed



Authority: (C. Agardh) H.T. Powell

North Pacific Distribution: Arctic Ocean, Bering Sea and Aleutian Is., Alaska, to central California; Japan; Russia.

Phylum: Ochrophyta

Class: Phaeophyceae

Order: Fucales

Family: Fucaceae

Former Scientific Names:

Fucus gardneri, *F. evanescens*

Description: Thallus of this very common and abundant intertidal species is yellow-brown to medium brown, with a discoidal holdfast, flattened, straplike blades with midribs, which repeatedly branch more or less equally (dichotomous branching), and distinctive air bladders (receptacles) at reproductive maturity. Individuals grow up to 50 cm (20 in) tall.

Habitat: This perennial can dominate high to low intertidal rock from estuarine to semi-exposed habitats. Rockweed is very tolerant of fresh water and freezing temperatures.

Comments:

Fucus gardneri is a synonym of this species; whether this subspecies also occurs in the Arctic and western North Atlantic requires verification.

Also search:

atabase

External link pops up in separate window which further describes species found in Shore Station database

Stations Home

Land Locales

1	
5	
4	
7	
7	
6	
8	
7	

Download Back

eg 53.4 W

Across-shore PROFILE

Download

PHOTOS

Back

stricted to:

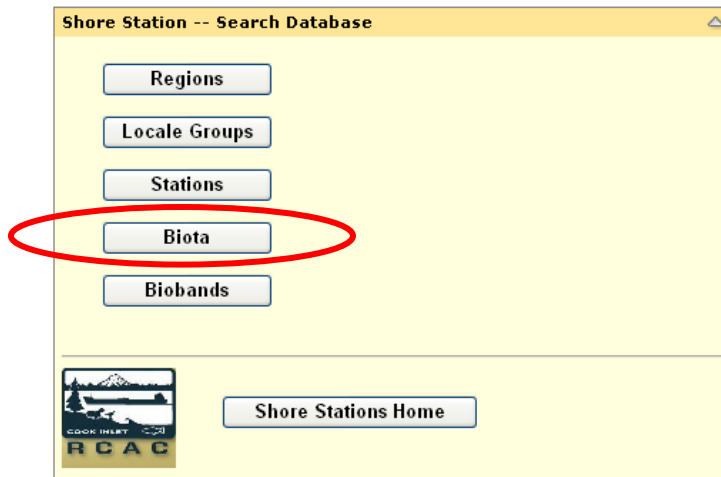
and other plants

brates and other

pecies

Include Bioband columns

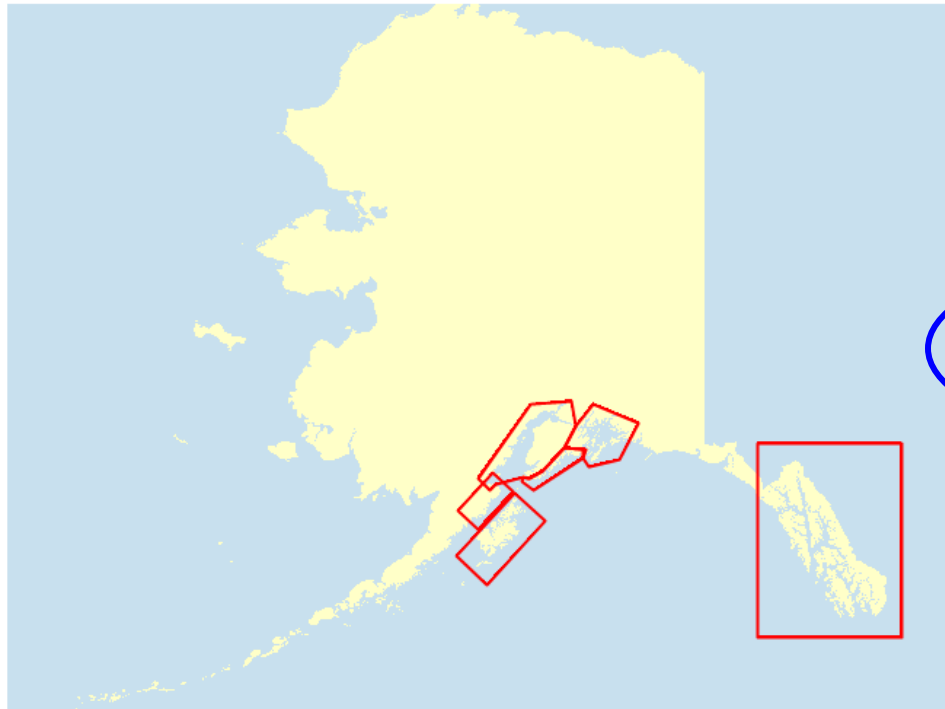
How can I query the database for a specific species?



Know your way around the Alaska Shore Station Database



Map Location: 126° 41.571' W 64° 50.903' N



Tools

- Zoom In
- Zoom Out
- Pan
- Full Extent
- Back
- Forward
- Query

Shore Station -- Search Database

- Regions
- Locale Groups
- Stations
- Biota

Click to view query options associated with list of species

Sort by: Scientific Name Common Name

[Select a Species (Scientific name)]

List includes:

- All species
- Algae and other plants
- Invertebrates and other animals

Biobands



Shore Stations Home

Site Settings

Tabs

- ShoreZone
- Shore Stations
- Fish Atlas

Start Over

Layers

- Query Layers
- ShoreZone Layers
- Shore Station Layers
- Fish Atlas Layers
- Virtual Earth
- Base Layers

Shore Stations: Alaska Regions

All Regions

Region	Species List
[all Alaska regions]	
Kenai Peninsula	
Katmai Coast	
Cook Inlet	
Kodiak Island	
Southeast Alaska	
Prince William Sound	

Know your way around the Alaska Shore Station Database

Alaska ShoreZone



[Disclaimer](#)

[Privacy Policy](#)

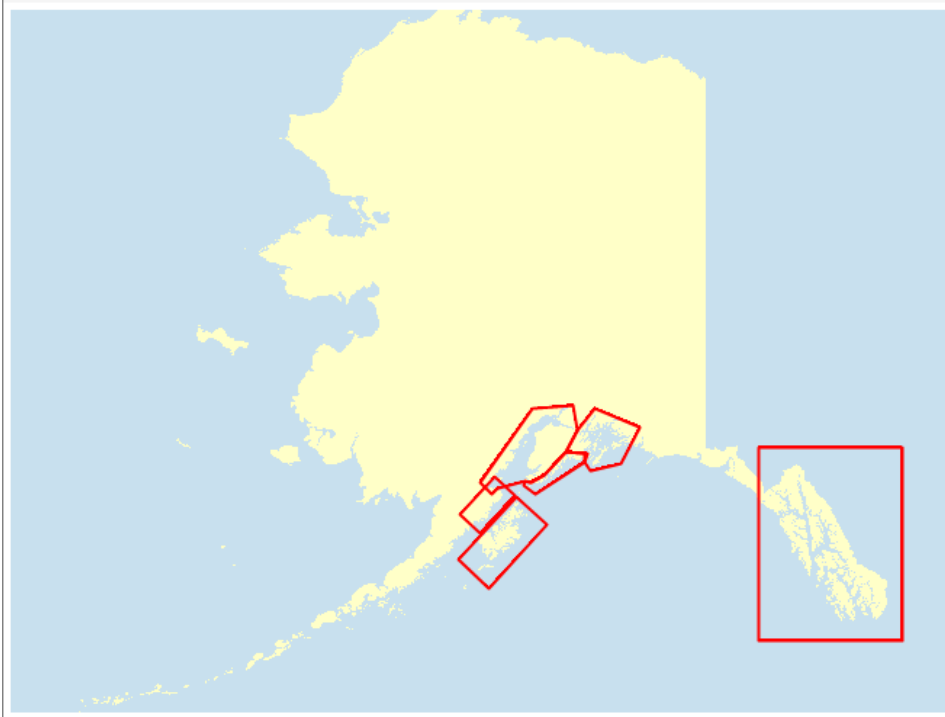
[ShoreZone Page](#)

[Help](#)

[Metadata](#)

[Contact](#)

Map Location: 126° 52.118' W 68° 43.198' N



Tools

- Zoom In
- Zoom Out
- Pan
- Full Extent
- Back
- Forward
- Query

Shore Station -- Search Database

Regions

Locale Groups

Stations

Biota

anemone

Biobands

Anthopleura xanthogrammica - giant green

Shore Stations Home



List of all stations where the giant green anemone were found

Site Settings

Tabs

ShoreZone

Shore Stations

Fish Atlas

Start Over

Layers

- Query Layers
- ShoreZone Layers
- Shore Station Layers
- Fish Atlas Layers
- Virtual Earth
- Base Layers

Shore Stations: Kodiak Island, Anthopleura xanthogrammica

Kodiak Island, Anthopleura xanthogrammica

Download

Back

Geographic Name	Station ID	EXP_BIO	BC Class	Date Sampled	Example Photo
Afognak Island, Izhut Bay, Kitoi Bay	KDK_05_003	SE	Rock Ramp, narrow	May 21, 2005	
Afognak Island, Perenos Bay, Phoenix Bay	KDK_05_006	E	Rock Ramp, narrow	May 22, 2005	
Afognak Island, Perenos Bay, Discoverer Bay	KDK_05_008	SP	Cliff with gravel beach	May 22, 2005	
Shuyak Island, Perevalnie Islands, Perevalnie Passage	KDK_05_013	E	Ramp with gravel beach	May 23, 2005	
Shuyak Island, Big Bay	KDK_05_018	SE	Cliff with gravel beach	May 24, 2005	
Afognak Island, North of Foul Bay, Black Cape	KDK_05_024	SE	Rock Ramp, narrow	May 25, 2005	
Kodiak Island, North of Spiridon Bay	KDK_05_028	SE	Cliff with gravel beach	May 26, 2005	

Know your way around the Alaska Shore Station Database

Alaska ShoreZone



[Disclaimer](#)

[Privacy Policy](#)

[ShoreZone Page](#)

[Help](#)

[Metadata](#)

[Contact](#)

Shore Station -- Search Database

[Regions](#)

[Locale Groups](#)

[Stations](#)

[Biota](#) Anthopleura xanthogrammica - giant green anemone

[Biobands](#)

[Shore Stations Home](#)

Click on camera icon to view photo of giant green anemone from station.

Right-click on photo to download full resolution image to your desktop.

Stations: Kodiak Island, Anthopleura xanthogrammica

Geographic Name	Station ID	EXP_BIO	BC Class	Date Sampled	Example Photo
Afognak Island, Izhut Bay, Kitoi Bay	KDK_05_003	SE	Rock Ramp, narrow	May 21, 2005	
Afognak Island, Perenos Bay, Phoenix Bay	KDK_05_006	E	Rock Ramp, narrow	May 22, 2005	
Afognak Island, Perenos Bay, Discoverer Bay	KDK_05_008	SP	Cliff with gravel beach	May 22, 2005	
Shuyak Island, Perevalnie Islands, Perevalnie Passage	KDK_05_013	E	Ramp with gravel beach	May 23, 2005	
Shuyak Island, Big Bay	KDK_05_018	SE	Cliff with gravel beach	May 24, 2005	
Afognak Island, North of Foul Bay, Black Cape	KDK_05_024	SE	Rock Ramp, narrow	May 25, 2005	
Kodiak Island, North of Spiridon Bay	KDK_05_028	SE	Cliff with gravel beach	May 26, 2005	

Shore Stations

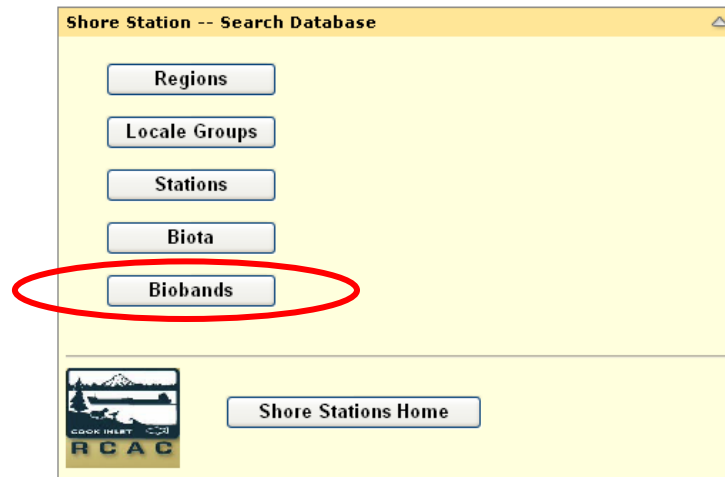
Fish Atlas

Virtual Earth

Base Layers

[Start Over](#)

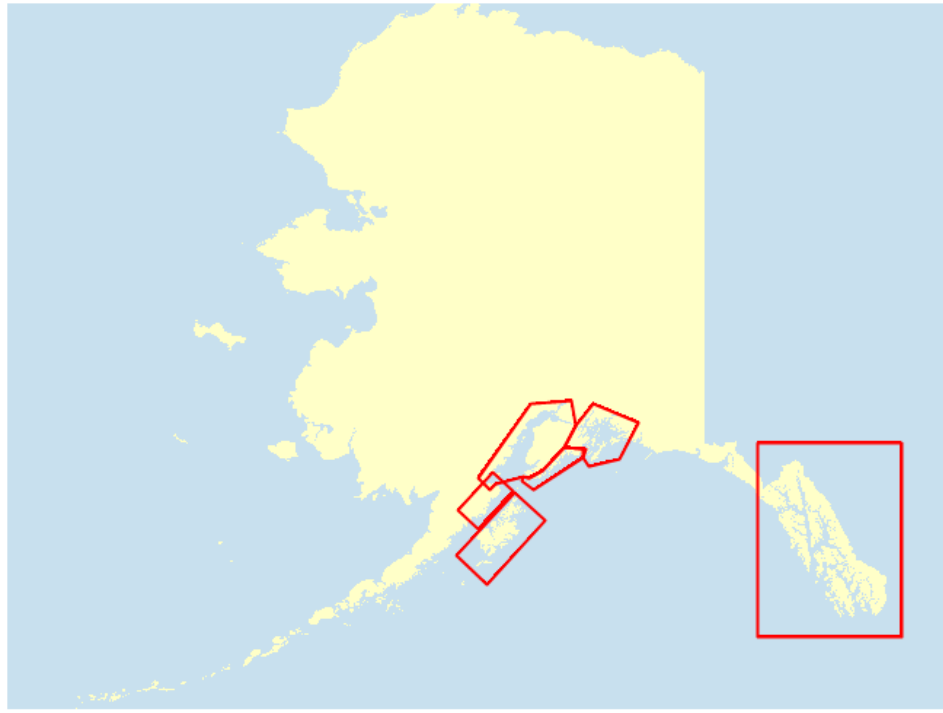
How can I query the database for a specific bioband?



Know your way around the Alaska Shore Station Database



Map



Tools

- Zoom In
- Zoom Out
- Pan
- Full Extent
- Back
- Forward
- Query

Shore Station -- Search Database

Regions

Locale Groups

Stations

Biota

Biobands

Click to view drop down list of bioband names

- [Select a Bioband]
- [Select a Bioband]
 - Splash Zone
 - Dune Grass
 - Sedges
 - Salt Marsh
 - Bare
 - Barnacle
 - Rockweed
 - Blue Mussel
 - Green Algae
 - Bleached Red Algae
 - Red Algae
 - Alaria
 - Soft Brown Kelps
 - Dark Brown Kelps
 - Surfgrass
 - Eelgrass
 - Dragon Kelp
 - Giant Kelp
 - Bull Kelp

[About biobands](#)



[Home](#)

Site Settings

Tabs

ShoreZone

Shore Stations

Fish Atlas

Start Over

Layers

- Query Layers
- ShoreZone Layers
- Shore Station Layers
- Fish Atlas Layers
- Virtual Earth
- Base Layers

Shore Stations: Alaska Regions

All Regions

Region	Species List
[all Alaska regions]	
Kenai Peninsula	
Katmai Coast	
Cook Inlet	
Kodiak Island	
Southeast Alaska	
Prince William Sound	

Know your way around the Alaska Shore Station Database

Alaska ShoreZone



[Disclaimer](#)

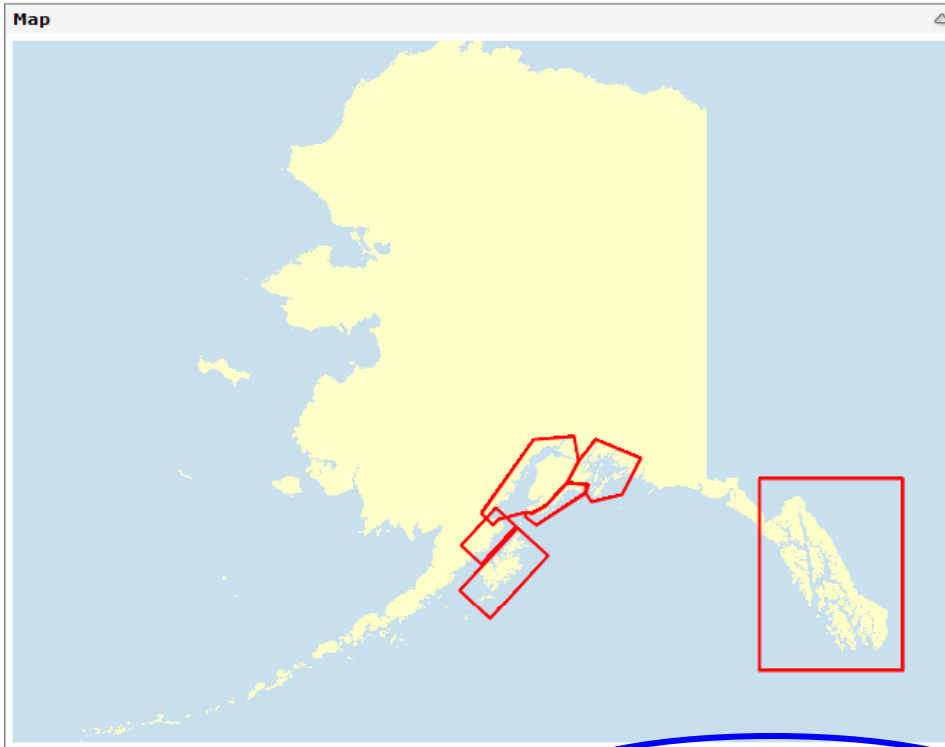
[Privacy Policy](#)

[ShoreZone Page](#)

[Help](#)

[Metadata](#)

[Contact](#)



Tools

- Zoom In
- Zoom Out
- Pan
- Full Extent
- Back
- Forward
- Query

Shore Station -- Search Database

Regions

Locale Groups

Stations

Biota

Biobands Blue Mussel

Shore Stations Home

List of all stations with blue mussel biobands

Site Settings

Query Layers

ShoreZone Layers

Shore Station Layers

Fish Atlas Layers

Virtual Earth

Base Layers

Start Over

Layers

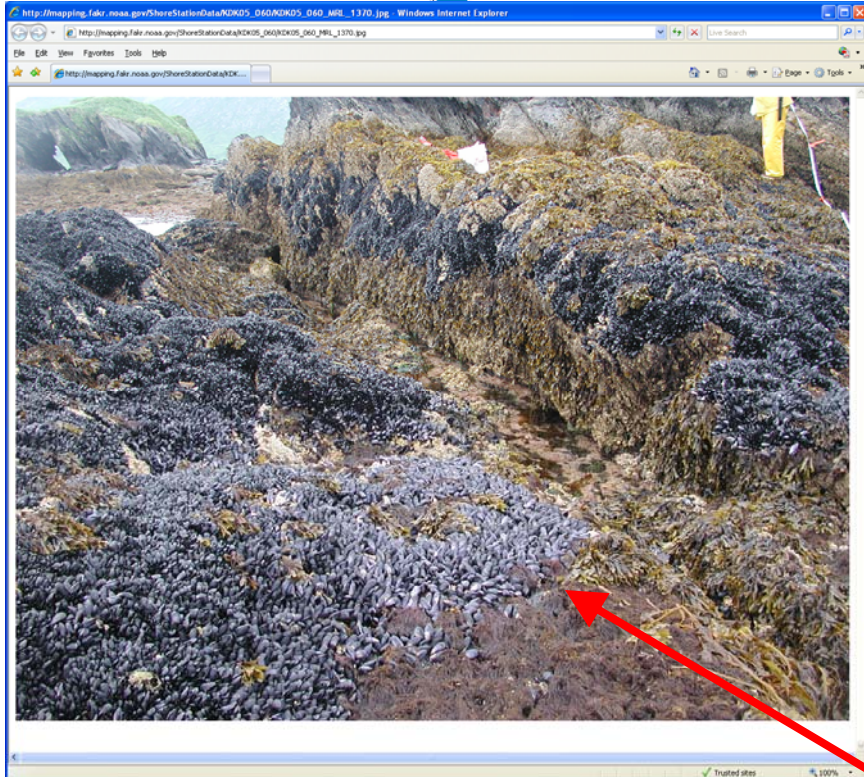
- Query Layers
- ShoreZone Layers
- Shore Station Layers
- Fish Atlas Layers
- Virtual Earth
- Base Layers

Shore Stations: Kodiak Island, Blue Mussel

Geographic Name	Station ID	EXP_BIO	BC Class	Date Sampled	Example Photo
Afognak Island, Izhut Bay, Kitoi Bay	KDK_05_003	SE	Rock Ramp, narrow	May 21, 2005	
Afognak Island, Perenosa Bay, Phoenix Bay	KDK_05_007	SE	Rock Cliff	May 22, 2005	
Shuyak Island, Perevalnie Islands	KDK_05_011	E	Rock Cliff	May 23, 2005	
Shuyak Island, Perevalnie Islands, Perevalnie Passage	KDK_05_013	E	Ramp with gravel beach	May 23, 2005	
Shuyak Island, Shangin Bay	KDK_05_017	SP	Cliff with gravel beach	May 23, 2005	
Shuyak Island, Big Bay	KDK_05_018	SE	Cliff with gravel beach	May 24, 2005	
Shuyak Island, Big Bay	KDK_05_020	SE	Cliff with gravel beach	May 24, 2005	
Shuyak Island, Big Bay	KDK_05_021	E	Rock Cliff	May 24, 2005	

Know your way around the Alaska Shore Station Database

Alaska ShoreZone


[Disclaimer](#)
[Privacy Policy](#)
[ShoreZone Page](#)
[Help](#)
[Metadata](#)
[Contact](#)


Tools

- Zoom In
- Zoom Out
- Pan
- Full Extent
- Back
- Forward
- Query

Shore Station -- Search Database

- Regions
- Locale Groups
- Stations
- Biota
- Biobands Blue Mussel

[Shore Stations Home](#)



Click icon to view station's Blue Mussel bioband.

Right-click on photo to download full resolution image to your desktop.

Site Settings

Tabs

- ShoreZone
- Shore Stations
- Fish Atlas

[Start Over](#)

Layers

- Query Layers
- ShoreZone Layers
- Shore Station Layers
- Fish Atlas Layers
- Virtual Earth
- Base Layers

Shore Stations: Kodiak Island, Blue Mussel

Kodiak Island, Blue Mussel

[Download](#) [Back](#)

Geographic Name	Station ID	EXP_BIO	BC Class	Date Sampled	Example Photo
Afognak Island, Izhut Bay, Kitoi Bay	KDK_05_003	SE	Rock Ramp, narrow	May 21, 2005	
Afognak Island, Perenosa Bay, Phoenix Bay	KDK_05_007	SE	Rock Cliff	May 22, 2005	
Shuyak Island, Perevalnie Islands	KDK_05_011	E	Rock Cliff	May 23, 2005	
Shuyak Island, Perevalnie Islands, Perevalnie Passage	KDK_05_013	E	Ramp with gravel beach	May 23, 2005	
Shuyak Island, Shangin Bay	KDK_05_017	SP	Cliff with gravel beach	May 23, 2005	
Shuyak Island, Big Bay	KDK_05_018	SE	Cliff with gravel beach	May 24, 2005	
Shuyak Island, Big Bay	KDK_05_020	SE	Cliff with gravel beach	May 24, 2005	
Shuyak Island, Big Bay	KDK_05_021	E	Rock Cliff	May 24, 2005	

What other features can be accessed?

Know your way around the Alaska Shore Station Database

Alaska ShoreZone



[Disclaimer](#)

[Privacy Policy](#)

[ShoreZone Page](#)

[Help](#)

[Metadata](#)

[Contact](#)

Map Location: 153° 56.757' W 57° 38.728' N



Tools

- Zoom In
- Zoom Out
- Pan
- Full Extent
- Back
- Forward
- Query

Shore Station -- Search Database

- Regions
- Locale Groups West Spiridon Bay
- Stations
- Biota
- Biobands



Shore Stations Home

Site Settings

Tabs

- ShoreZone
- Shore Stations
- Fish Atlas

Start Over

Layers

- Query Layers
- ShoreZone Layers
- Shore Station Layers
- Fish Atlas Layers
- Virtual Earth
- Base Layers

Shore Stations: West Spiridon Bay Stations

West Spiridon Bay - Kodiak Island

Download Back

Geographic Name	Station ID	EXP_BIO	BC Class	Date Sampled
Kodiak Island, North of Spiridon Bay	KDK_05_028	SE	Cliff with gravel beach	May 26, 2005
Kodiak Island, North of Spiridon Bay	KDK_05_029	SE	Ramp w gravel & sand beach, wide	May 26, 2005
Kodiak Island, North of Spiridon Bay	KDK_05_030	SE	Ramp with gravel beach	May 26, 2005
Kodiak Island, Spiridon Bay, Chief Point	KDK_05_031	P	Cliff with gravel beach	May 26, 2005
Kodiak Island, Spiridon Bay, Bird Rocks	KDK_05_032	SP	Cliff with gravel beach	May 26, 2005
Kodiak Island, Spiridon Bay, Bird Rocks	KDK_05_033	SP	Ramp with gravel beach	May 26, 2005
Kodiak Island, Spiridon Bay, Chief Point	KDK_05_034	SP	Sand & gravel flat or fan	May 26, 2005

Toggle on Virtual Earth to view topography in mapping frame.

Note this view doesn't show when zoomed to a station.

Know your way around the Alaska Shore Station Database



The screenshot displays the Alaska ShoreZone database interface. The main map area shows a coastal region with a red dotted trackline and blue dots representing shore stations. Two stations are labeled: KDK_05_031 (marked with a blue flag) and KDK_05_034. A red arrow points from the text below to the trackline area. To the right of the map is a 'Tools' panel with icons for Zoom In, Zoom Out, Pan, Full Extent, Back, Forward, and Query. Further right is the 'Shore Station -- Search Database' panel, which includes buttons for 'Regions', 'Locale Groups', 'Stations' (with 'KDK_05_031' selected), 'Biota', and 'Biobands'. Below these buttons is a 'Shore Stations Home' button and a small 'RCAC' logo. At the bottom left, the 'Site Settings' panel shows 'Shore Stations' selected under the 'Tabs' section, with a 'Start Over' button below it. The 'Layers' panel at the bottom right lists several layers with checkboxes: Query Layers, ShoreZone Layers, Shore Station Layers, Fish Atlas Layers, Virtual Earth, and Base Layers, all of which are checked.

Toggle to ShoreZone database to view aerial imagery trackline, shore segments, and habitat classifications.

Know your way around the Alaska Shore Station Database

Alaska ShoreZone



[Disclaimer](#)

[Privacy Policy](#)

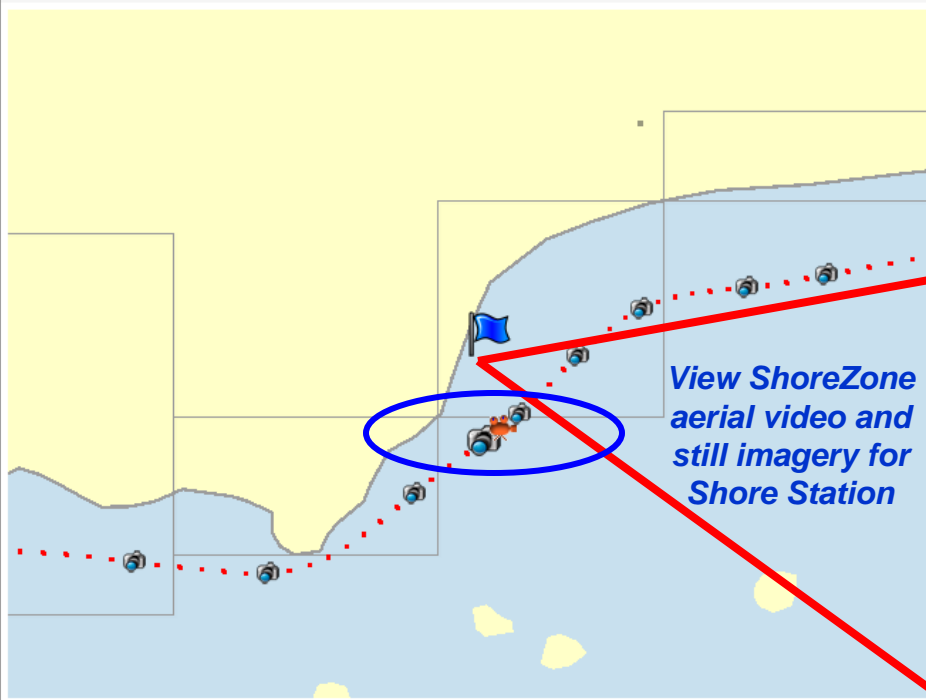
[ShoreZone Page](#)

[Help](#)

[Metadata](#)

[Contact](#)

Map Location: 153° 53.064' W 57° 42.038' N



View ShoreZone aerial video and still imagery for Shore Station

Tools



Zoom In



Zoom Out



Pan



Full Screen



Back



Forward



Query

Video



Still Photos



Photo shows Shore Station transect and crew

Site Settings

Tabs

ShoreZone

Shore Stations

Fish Atlas

Start Over

Layers

- Query Layers
- ShoreZone Layers
- Shore Station Layers
- Fish Atlas Layers
- Virtual Earth
- Base Layers

ShoreZone Units

Unit ID	Length	Habitat Class	Biological Wave Exposure	Dil Residency Index (ORI)	BC Class	Environm
06/03/4123/0	1,066	41	SP		4	
06/03/4125/0	328	41	SP		13	
06/03/4126/0	305	41	SP		31	
06/03/4127/0	820	41	SP		21	

Right-click on photo to download full resolution image to your desktop.

Know your way around the Alaska Shore Station Database

Alaska ShoreZone



[Disclaimer](#)

[Privacy Policy](#)

[ShoreZone Page](#)

[Help](#)

[Metadata](#)

Map Location: 126° 4.657' W 67° 26.444' N

Tools

- Zoom In
- Zoom Out
- Pan
- Full Extent
- Back
- Forward
- Query

**Problems?
You can
always
click the
“start over”
button**

Site Settings

Start Over

Layers

- Query Layers
- ShoreZone Layers
- Shore Station Layers
- Fish Atlas Layers
- Virtual Earth
- Base Layers