

Figure 1. Frequency distribution and proportion of observed sets and sea turtle takes by depth bins. (Note: These data are from the combined shark bottom longline and reef fish observer programs from July 2006 through July of 2008).

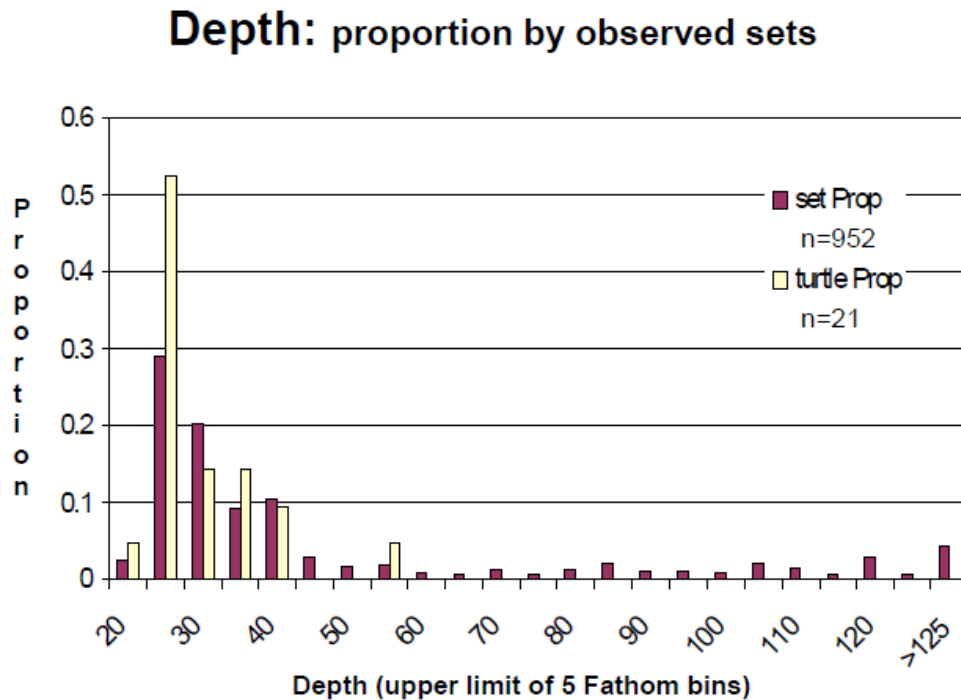


Table 1. Data used to construct the frequency distribution and proportion of observed sets and sea turtle takes by depth bins. (Note: These data are from the combined shark bottom longline and reef fish observer programs from July 2006 through July of 2008).

<i>Upper limit of 5 fathom Bin</i>	<i>Set Frequency</i>	<i>Set Prop</i>	<i>Upper limit of 5 fathom Bin</i>	<i>Turtle Frequency</i>	<i>Turtle Prop</i>
20	24	0.02521	20	1	0.047619
25	277	0.290966	25	11	0.52381
30	192	0.201681	30	3	0.142857
35	88	0.092437	35	3	0.142857
40	99	0.103992	40	2	0.095238
45	26	0.027311	45	0	0
50	16	0.016807	50	0	0
55	18	0.018908	55	1	0.047619
60	8	0.008403	60	0	0
65	7	0.007353	65	0	0
70	12	0.012605	70	0	0
75	7	0.007353	75	0	0
80	12	0.012605	80	0	0
85	20	0.021008	85	0	0
90	10	0.010504	90	0	0
95	11	0.011555	95	0	0
100	8	0.008403	100	0	0
105	20	0.021008	105	0	0
110	15	0.015756	110	0	0
115	7	0.007353	115	0	0
120	28	0.029412	120	0	0
125	6	0.006303	125	0	0
>125	41	0.043067	More	0	0
	952	1		21	1