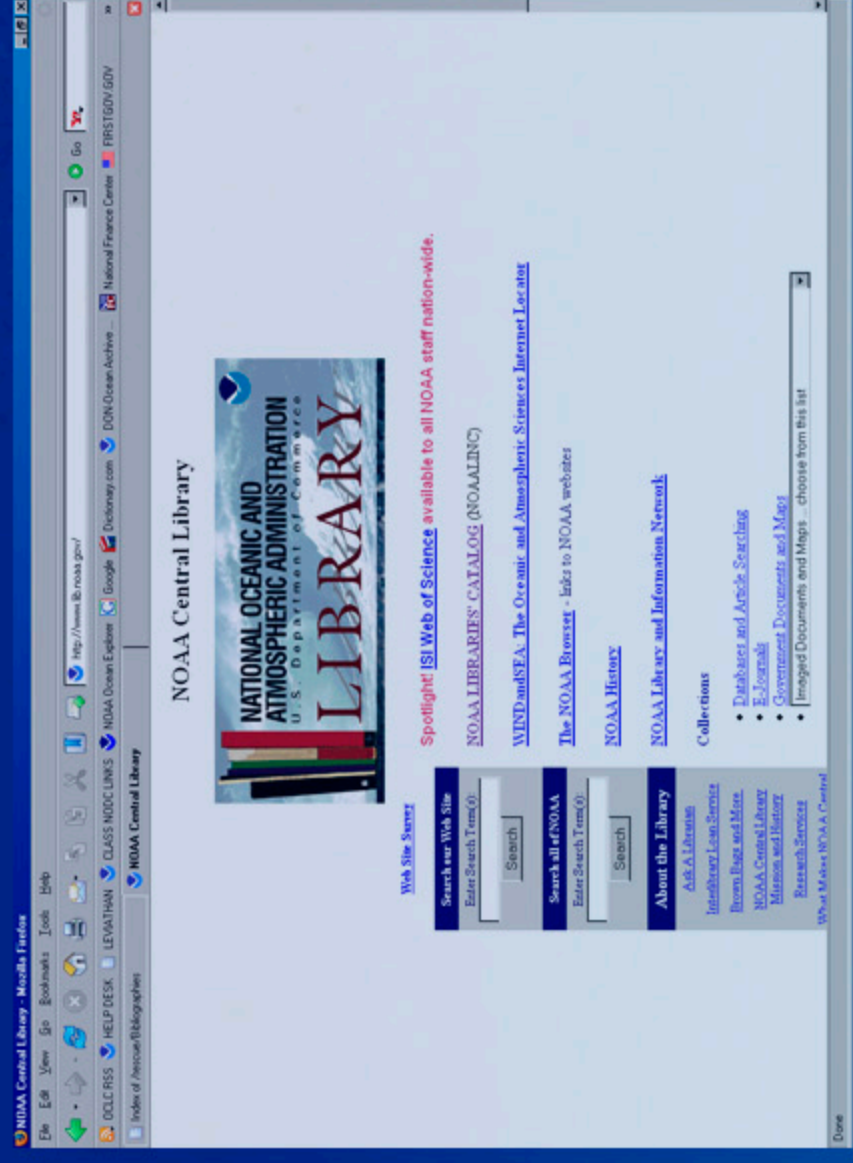
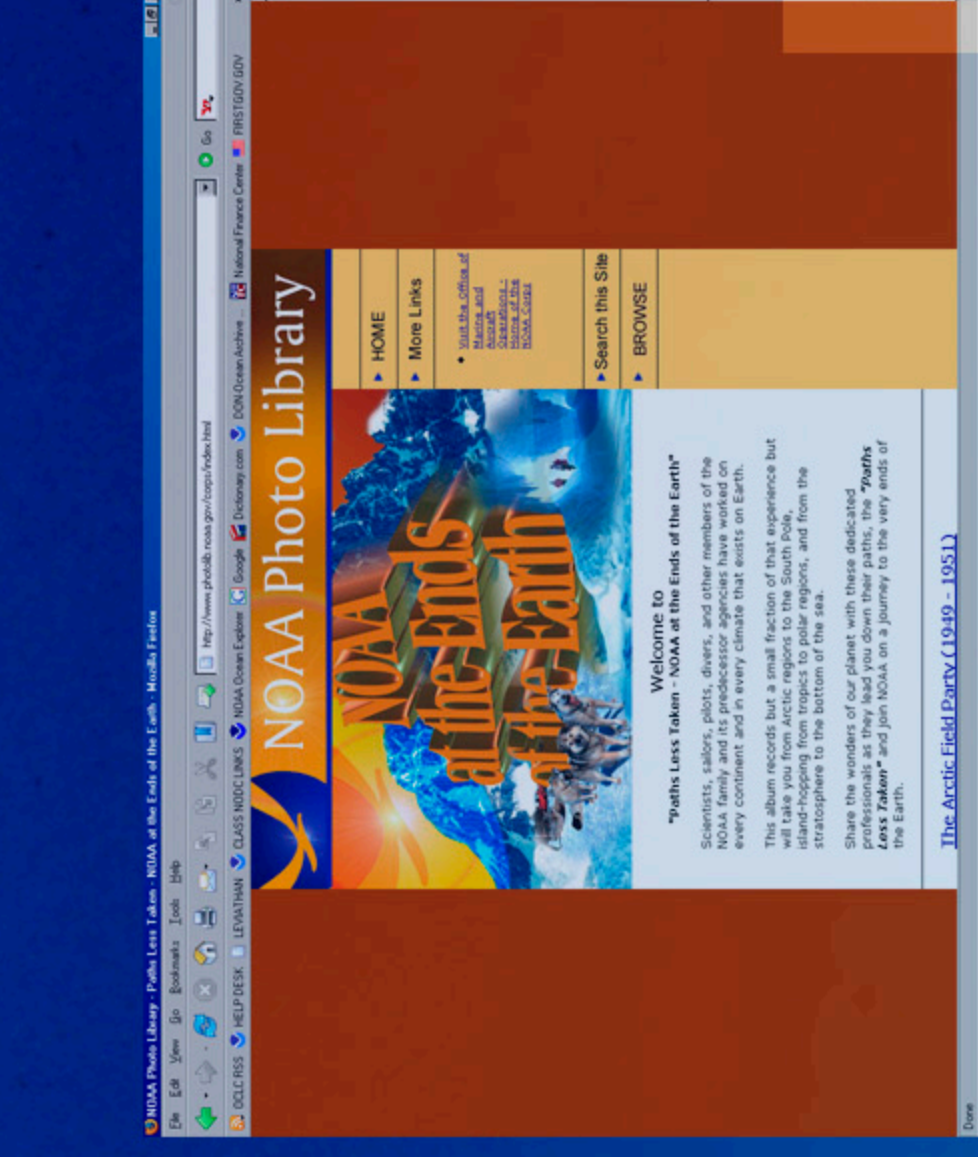


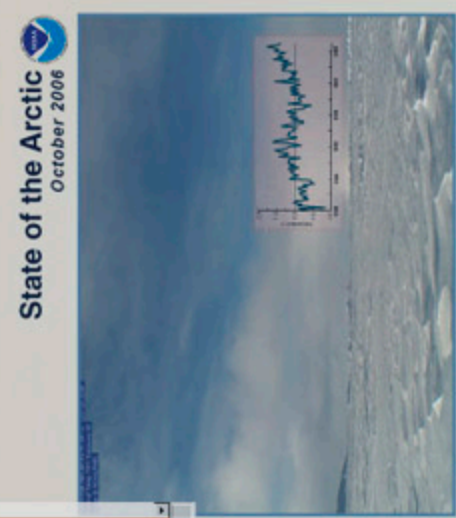
Historical Polar Expeditions



www.lib.noaa.gov



NOAA Photo Library

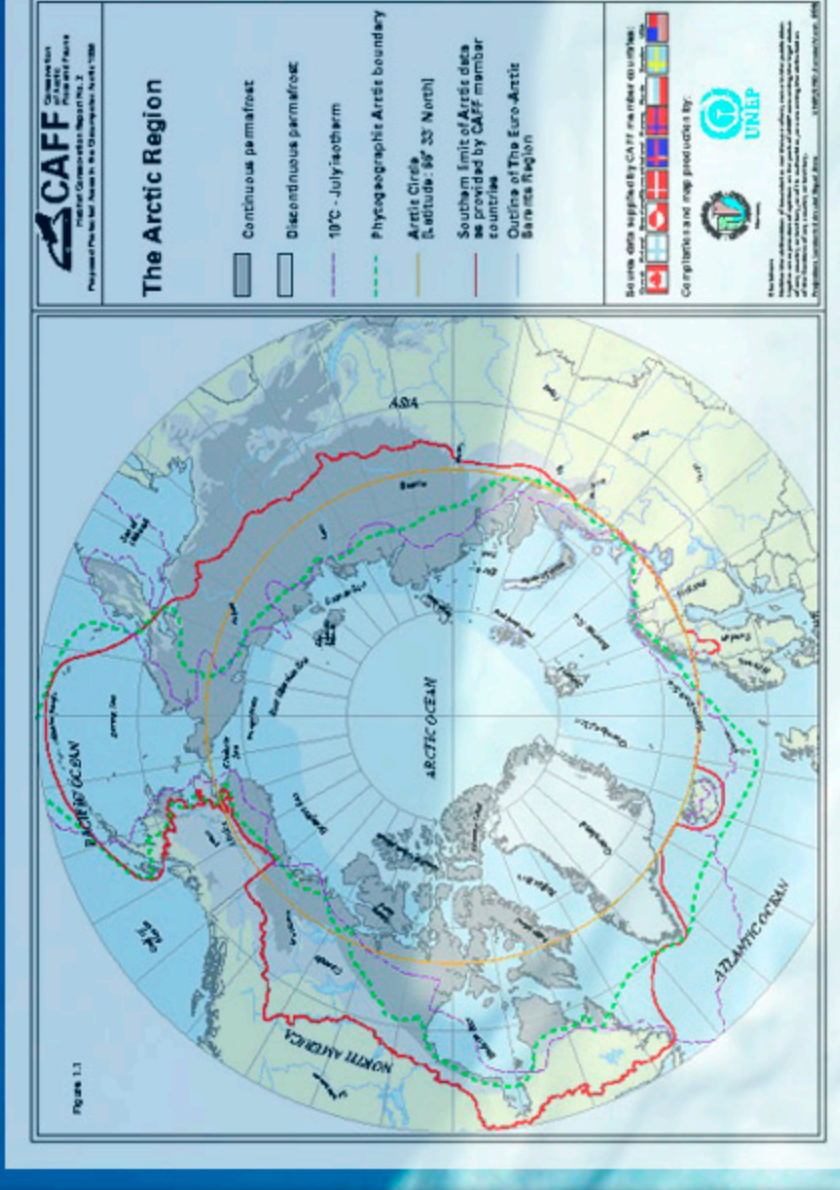


www.arctic.noaa.gov/soa2006



NOAA Arctic Research Office

www.arctic.noaa.gov/aro/



Arctic Life



Phyronet siphonophore (Hidden Oceans 2005) Photo by Kevin Rasmol



Prepared by Anna Fiolek
Edited by Doria Grimes

NOAA Central Library
1315 East-West Highway
Silver Spring, MD 20910

U. S. Department of Commerce
National Oceanic and Atmospheric Administration
National Environmental Satellite, Data, and Information Service
National Oceanographic Data Center
NOAA Central Library
January 2006

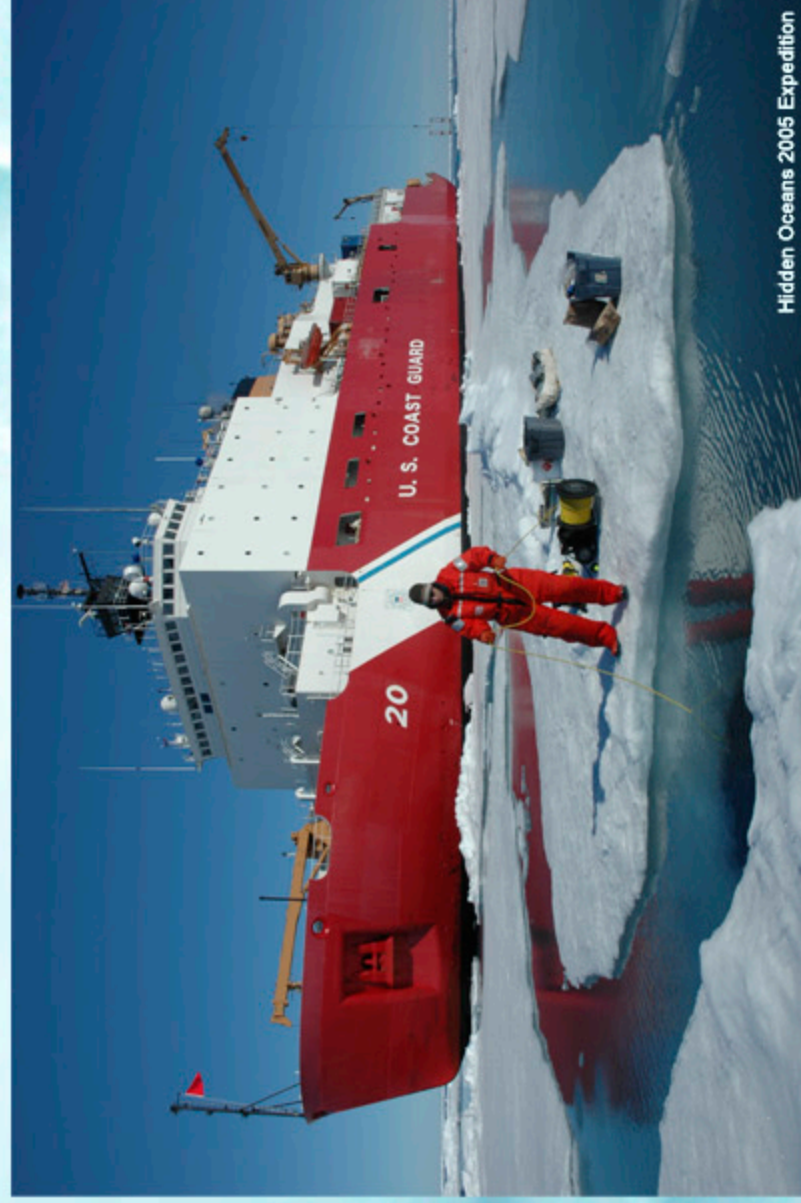
<http://docs.lib.noaa.gov/rescue/Bibliographies/IPY2007.pdf>



Lefroyd's Therman Island Base - in use 1909-1911 from: NOAA Photo Library

Library and Information Services Division
Current References 2006-1
International Polar Year 2007-2008
Resources on Polar Research in the NOAA Central Library Network
A Selected Bibliography

Polar Explorers



Hidden Oceans 2006 Expedition

International Polar Year 2007-2008

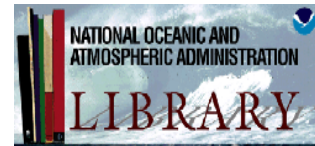
Resources on Polar Research in the NOAA Central Library Network

<http://docs.lib.noaa.gov/rescue/Bibliographies/IPY2007.pdf>

U.S. Department of Commerce, NOAA, NESDIS, National Oceanographic Data Center, NOAA Central Library
1315 East-West Highway, Silver Spring, MD 20910; e-mail address: Anna.Fiolek@noaa.gov



International Polar Year 2007 - 2008



Resources on Polar Research in the NOAA Central Library Network

Anna Fiolek, NOAA Central Library,

e-mail: Anna.Fiolek@noaa.gov

1315 East-West Highway, SSMC3, 2nd Floor

Silver Spring, MD 20910

Home page: <http://www.lib.noaa.gov/collections/ipy.html>

Synopsis: Located in Silver Spring, Maryland, the NOAA Central Library (NCL) networks over thirty NOAA libraries nationwide. NCL is considered the most comprehensive multidisciplinary and historically richest scientific collection in hydrographic surveying, oceanography, ocean engineering, atmospheric sciences (climatology and meteorology), meteorological satellite applications, living marine resources, geophysics, cartography, and mathematics in the United States, possibly in the Western Hemisphere. It incorporates holdings of NOAA's predecessor agencies, including the Coast and Geodetic Survey, National Weather Service, and the Bureau of Fisheries. The collections reflect the history of these organizations, their scientific research, observations and data from 1820 to the present.

The NOAA Library Network collections are unique; over 40% of the items in NOAALINC (the online catalog) and their manual catalogs are not found anywhere else. Unique polar research include historic and current reports from the various polar expeditions, and research and observations from both the Arctic and Antarctic regions. The presence of these unique and historical resources in NOAA impelled the Library to participate in the 4th International Polar Year (IPY) 2007-2008 activities.

Many unique and historically valuable NOAA polar research documents and scientific data, in the forms of digital videos, still images, and datasets, have been entered into the NOAALINC, the National Oceanographic Data Center Ocean Archive System (OAC), and other oceanographic information catalogs and databases. This was possible thanks to the Library's collaboration with several NOAA projects and programs, including the Video Data Management System (VDMS), Climate Data Modernization Program (CDMP), and NODC Cruise Report Program.

Over one hundred fifty of these unique and historically valuable documents were selected, cataloged, imaged and entered into NOAALINC to assure online, open access to their full-text files. A comprehensive bibliography has been prepared to provide an additional access point to the polar related resources via the Library's home page. This online bibliography also serves as an Internet locator for printed and remote resources in polar research. It is located at: <http://docs.lib.noaa.gov/rescue/Bibliographies/IPY2007.pdf>

During the 4th IPY, the NOAA Library Network collections serve as an important historical resource for polar data and research. The IPY home page and the Polar Poster developed in NCL serve as an additional access point to the library's polar resources.

The library's IPY home page and Polar Poster are located at:

<http://www.lib.noaa.gov/collections/ipy.html> (Library's IPY home page)

http://docs.lib.noaa.gov/rescue/Bibliographies/IPY2007_poster.pdf (PDF format)

http://docs.lib.noaa.gov/rescue/Bibliographies/IPY2007_poster.jpg (JPEG format)



NOAA Photo Library (<http://www.photolib.noaa.gov/>)