

FKNMS ZONING & REGULATORY REVIEW

Summary of Boundary Adjustment
Options from the Scoping Process &
Study Areas Recommendation

Presentation to the Florida Keys National Marine
Sanctuary Advisory Council
December 2012

Ramifications of Identifying Study Areas

- Locations within the study area but outside present FKNMS boundaries also can be considered in the zoning and review process by the SAC working groups
- Present Sanctuary-wide regulations would otherwise apply to the study area should those new boundaries be adopted
- Evaluate economic and environmental impacts

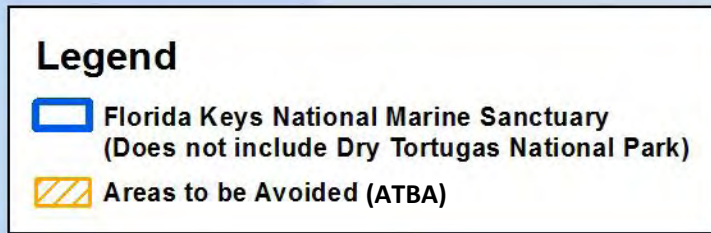
Notable Sanctuary-wide Regulations

- Operating a vessel in such a manner as to strike or otherwise injure coral, seagrass, or other immobile organisms attached to the seabed, or cause prop scarring
- Moving, removing, taking, injuring, touching, breaking, cutting or possessing coral or live rock
- Discharging or depositing treated or untreated sewage from marine sanitation devices, trash, and other materials
- Dredging, drilling, prop dredging or otherwise altering the seabed; placing or abandoning any structure on seabed.
- No mineral or hydrocarbon exploration
- Releasing exotic species



Summary of Scoping
Comments Regarding FKNMS
Boundary and Expanded
Protections

Areas to be Avoided

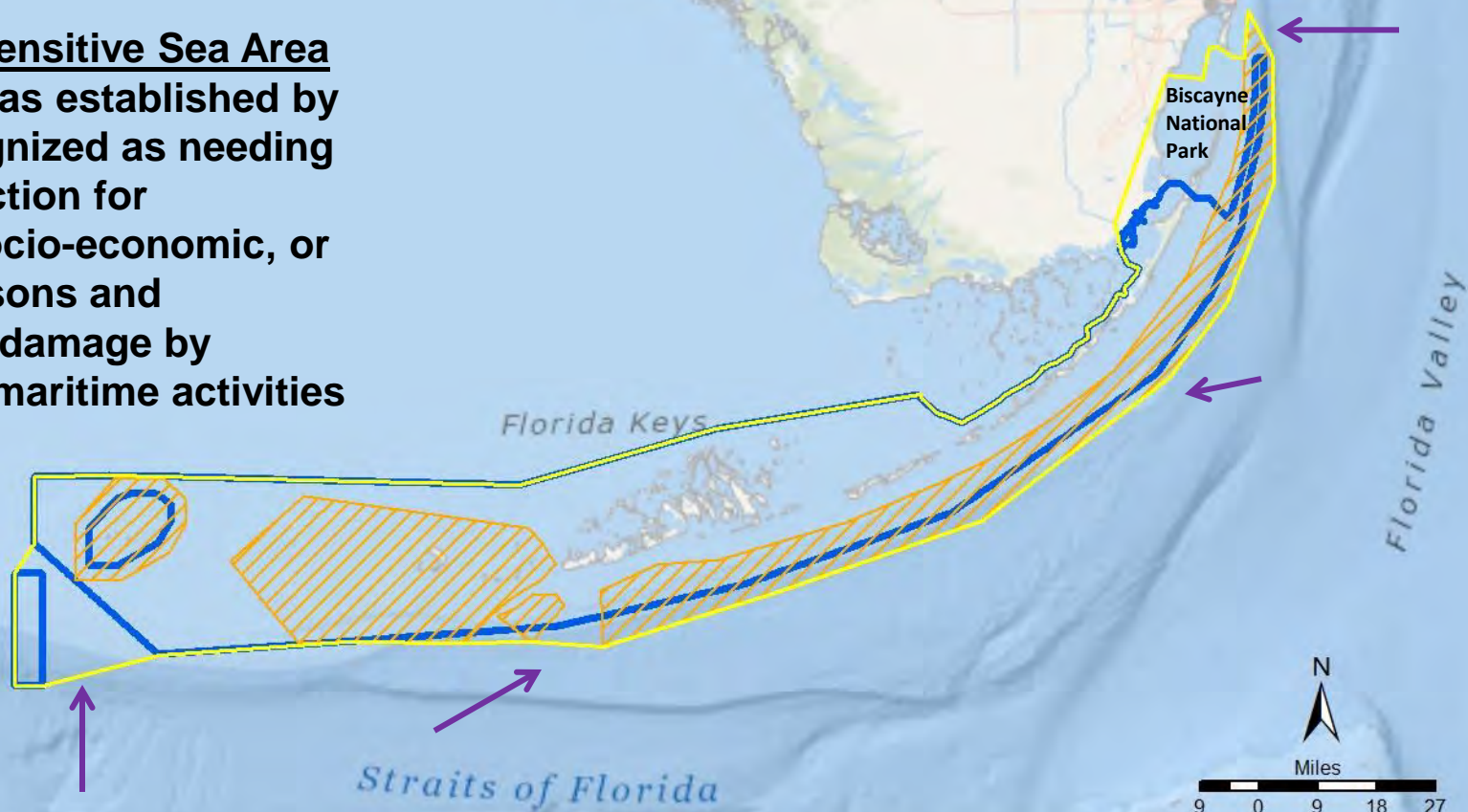


- ATBA Presently regulated by FKNMS
- Vessels greater than 50m prohibited from ATBA without permit



Particularly Sensitive Sea Area

Particularly Sensitive Sea Area (PSSA) -- Areas established by the IMO recognized as needing special protection for ecological, socio-economic, or scientific reasons and vulnerable to damage by international maritime activities

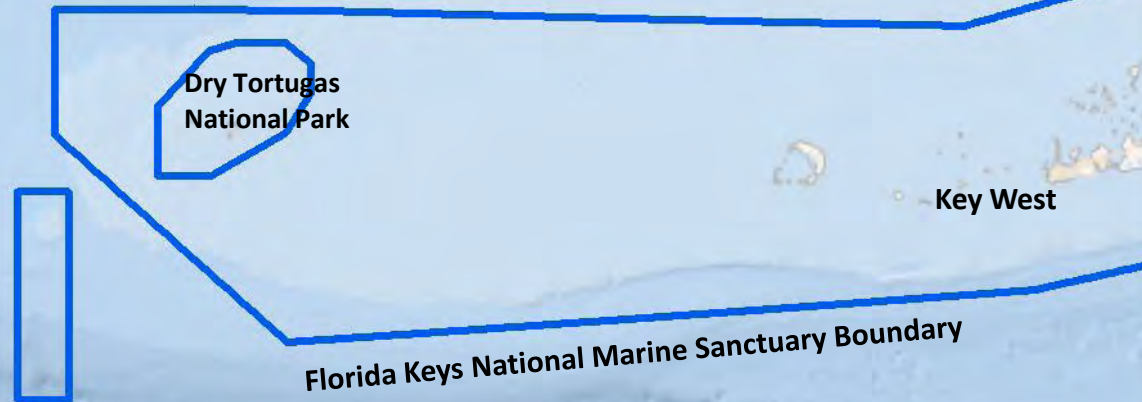
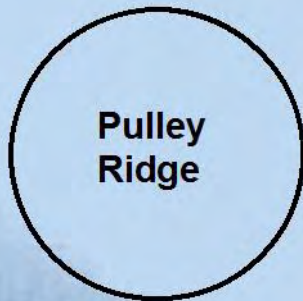


Legend

-  Florida Keys National Marine Sanctuary (Does not include Dry Tortugas National Park)
-  Areas to be Avoided
-  Particularly Sensitive Sea Areas

Pulley Ridge

- Portion of Pulley Ridge presently a Habitat Area of Particular Concern (HAPC)
- Strong ecological connectivity to the Florida Keys




Tortugas South Ecological Reserve

Straits of Florida



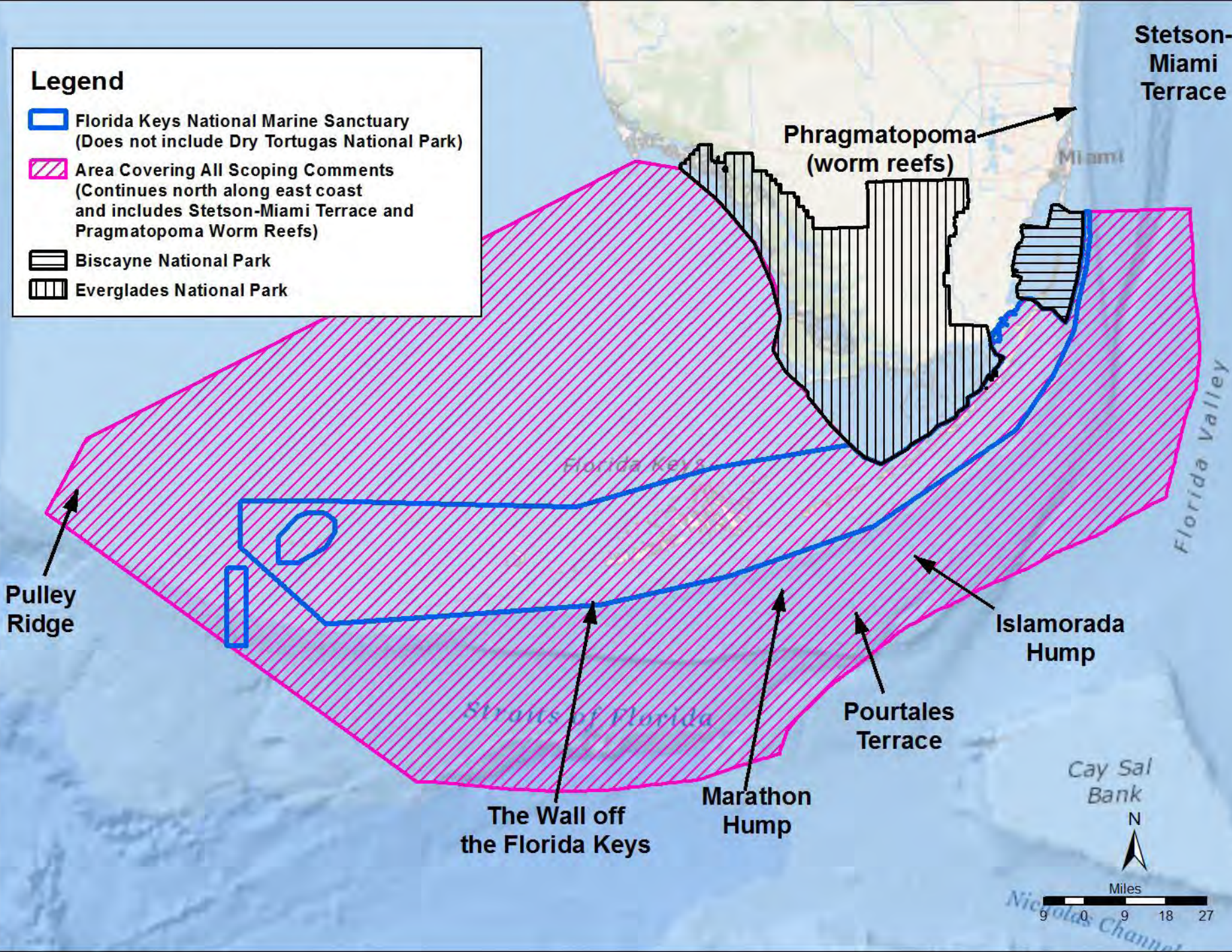
Legend

 Florida Keys National Marine Sanctuary
(Does not include Dry Tortugas National Park)

 Area Covering All Scoping Comments
(Continues north along east coast
and includes Stetson-Miami Terrace and
Pragmatopoma Worm Reefs)

 Biscayne National Park

 Everglades National Park



Stetson-Miami Terrace

Pragmatopoma (worm reefs)

Miami

Florida Valley

Florida Keys

Straits of Florida

Pulley Ridge

Islamorada Hump

Pourtales Terrace

The Wall off the Florida Keys

Marathon Hump

Cay Sal Bank

N

Miles

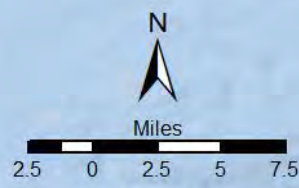
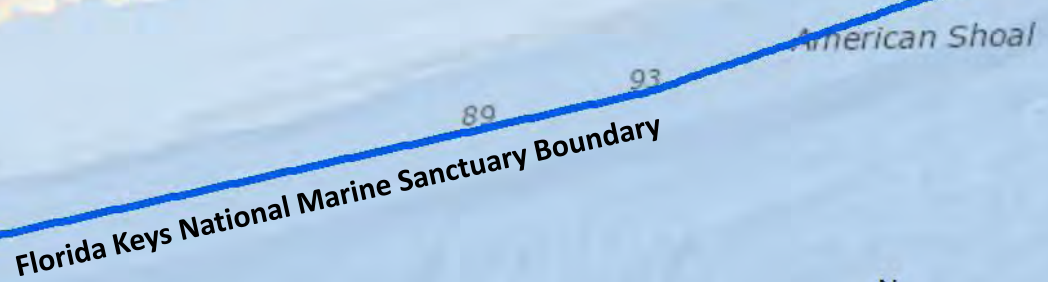
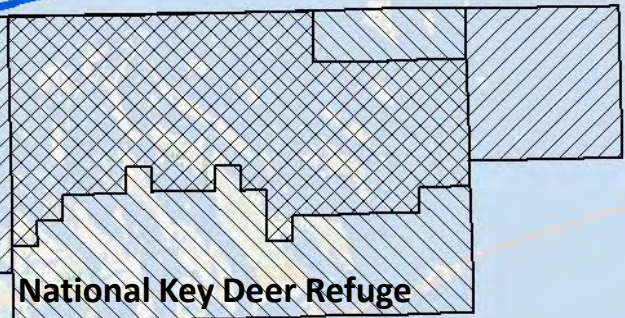
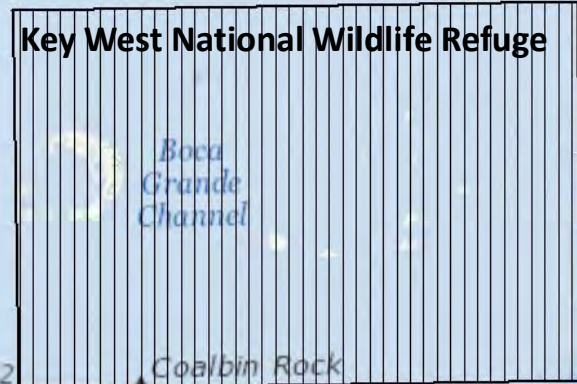
0 9 18 27

Nicolas Channel



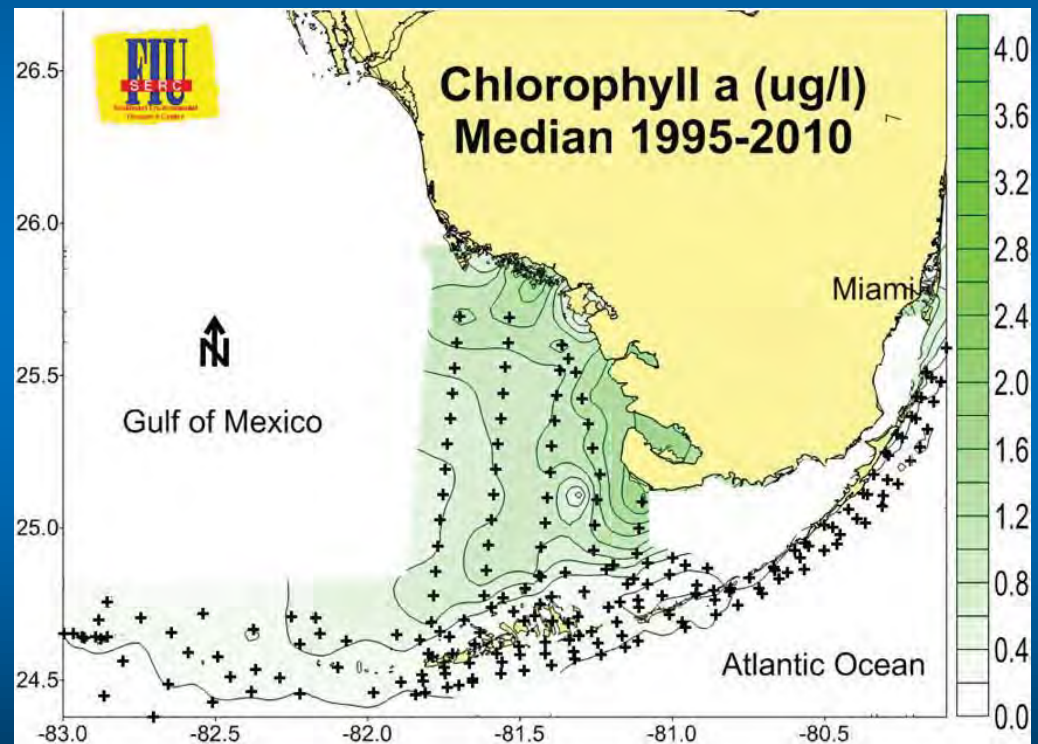
Proposed Study Areas
Development: Considerations

Wildlife Refuge Boundaries



FKNMS Ecological Connectivity

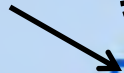
Sanctuary has strong ecological connectivity to Everglades ecosystem



Western Sanctuary Region



Riley's Hump



Tortugas Bank



Dry Tortugas National Park



Key West

Florida Keys National Marine Sanctuary Boundary

Tortugas South Ecological Reserve

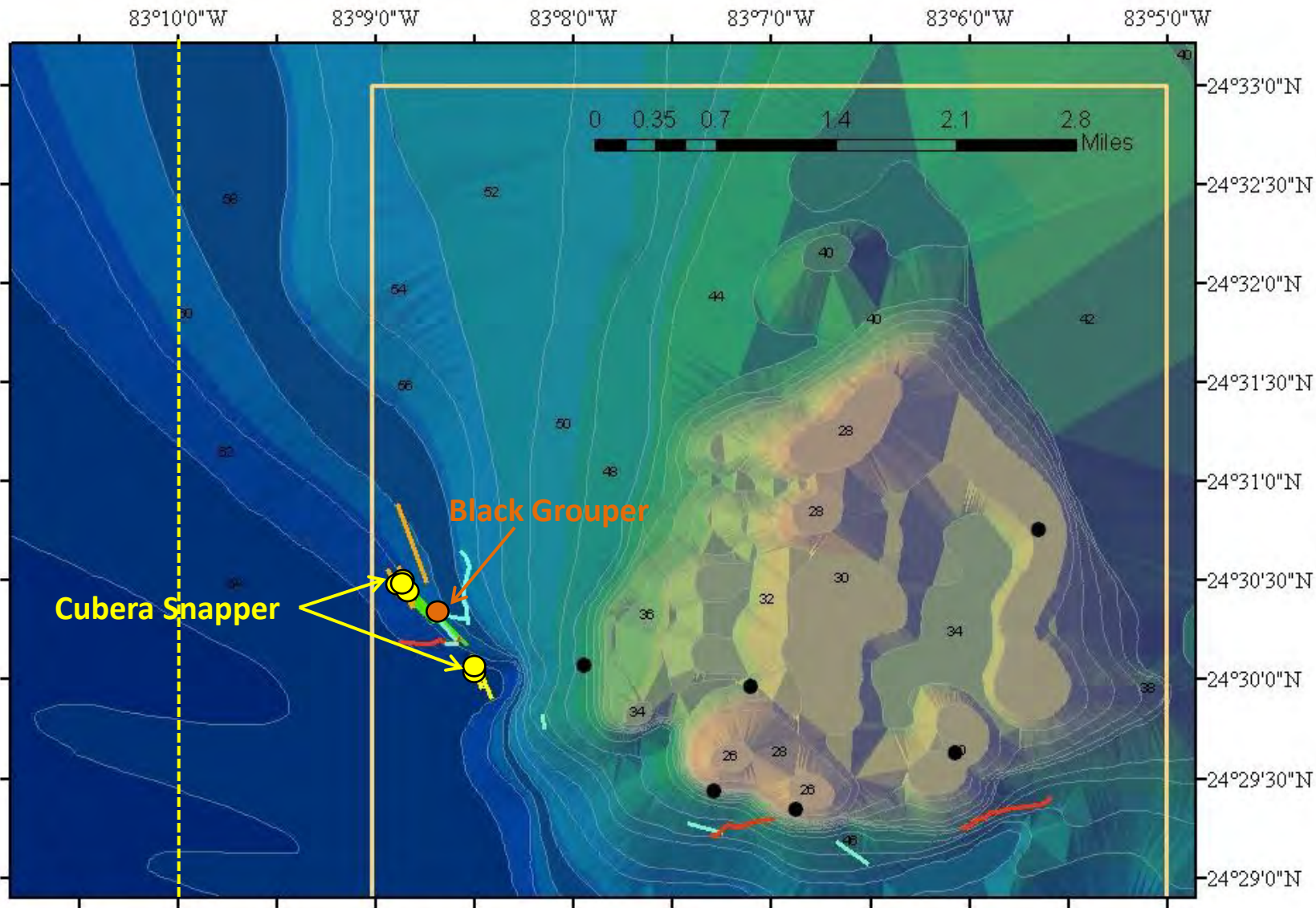


Straits of Florida



Miles

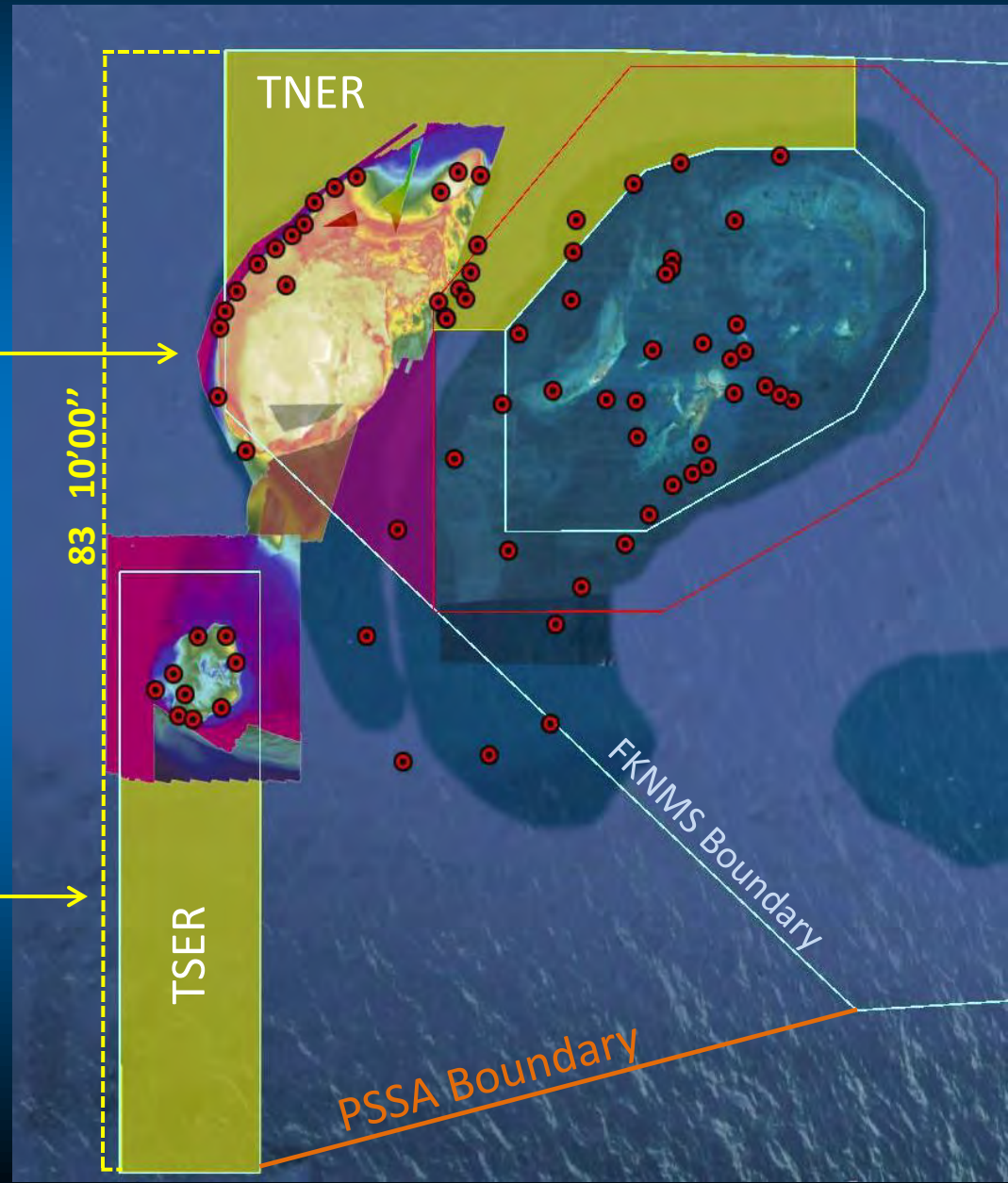
5 0 5 10 15



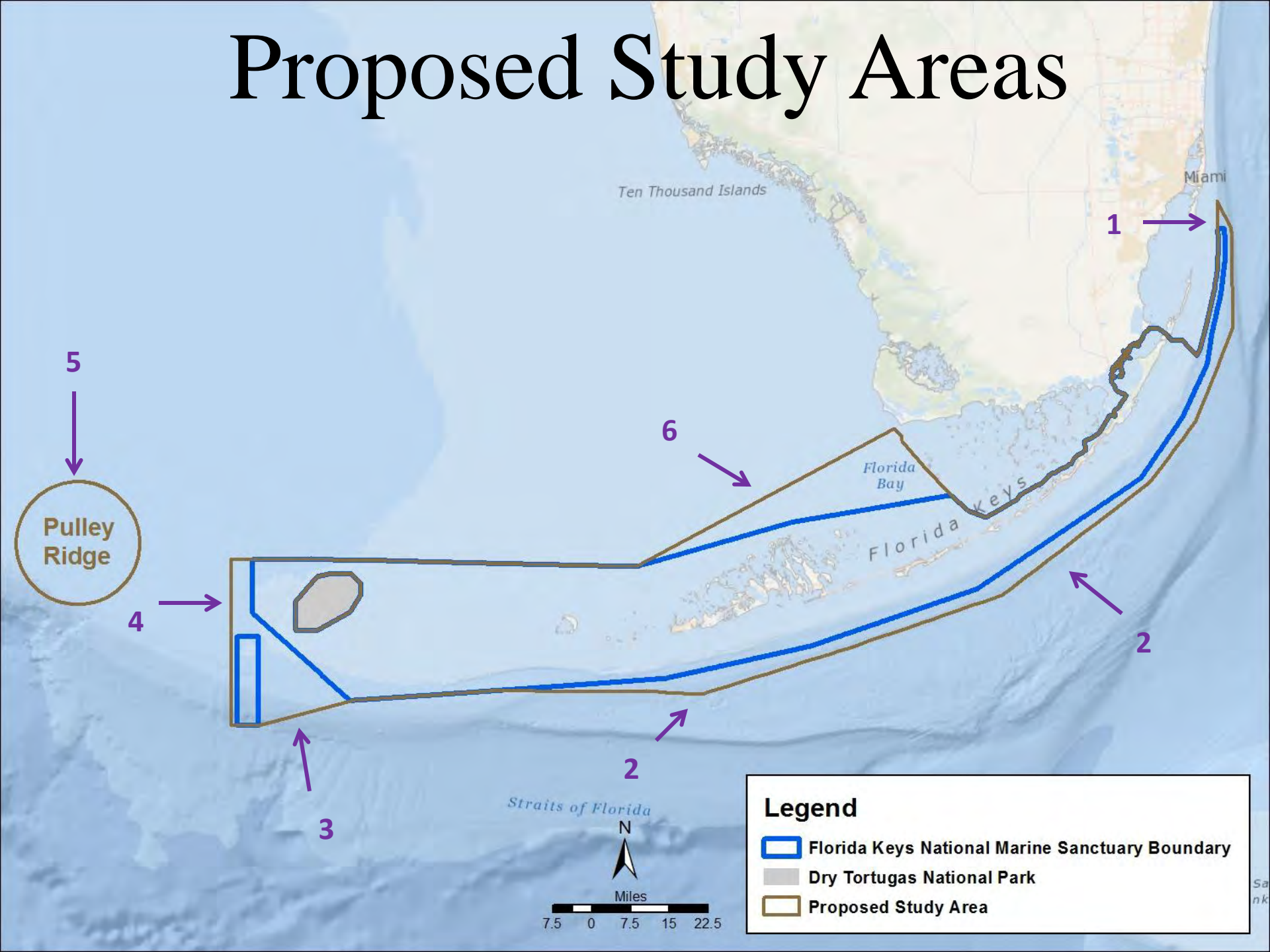
Western Sanctuary Region

Far western extent of
Tortugas Bank not
presently within FKNMS

Potential Study Area
Boundary



Proposed Study Areas



5
Pulley Ridge

Legend

- Florida Keys National Marine Sanctuary Boundary
- Dry Tortugas National Park
- Proposed Study Area