

Geographic Information System

What is a GIS?



Points

Human Use Locations

Polygons

Seagrass

Geographic

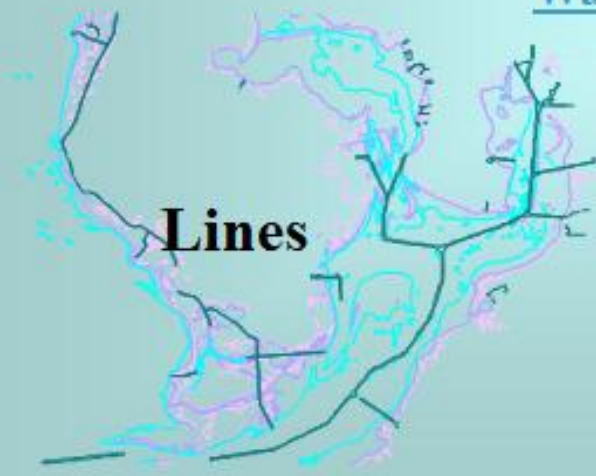
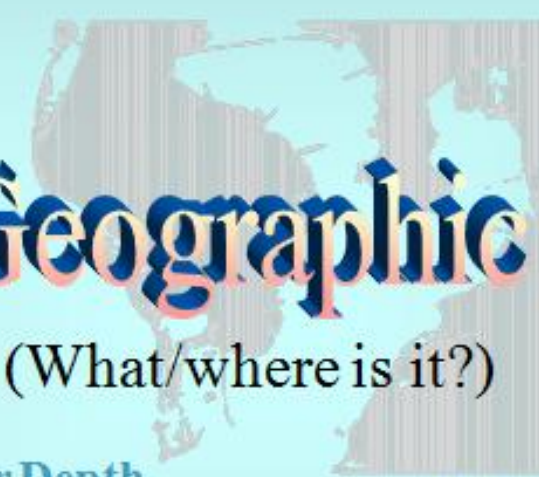
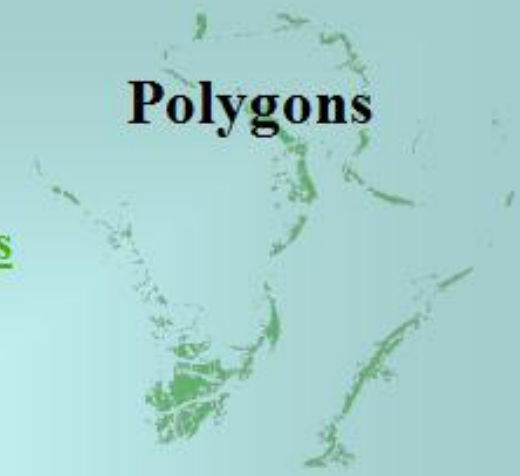
(What/where is it?)

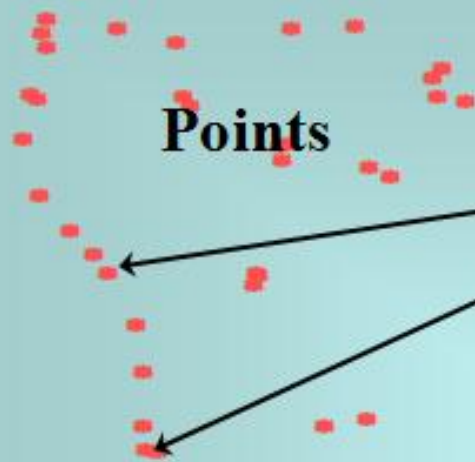
Water Depth

Mangroves

Lines

Polygons





Points

Human Use Locations

beach access

boat ramp

Polygons

Seagrass
patchy

continuous

Information

(What's important about it?)

Water Depth

3 feet

12 feet

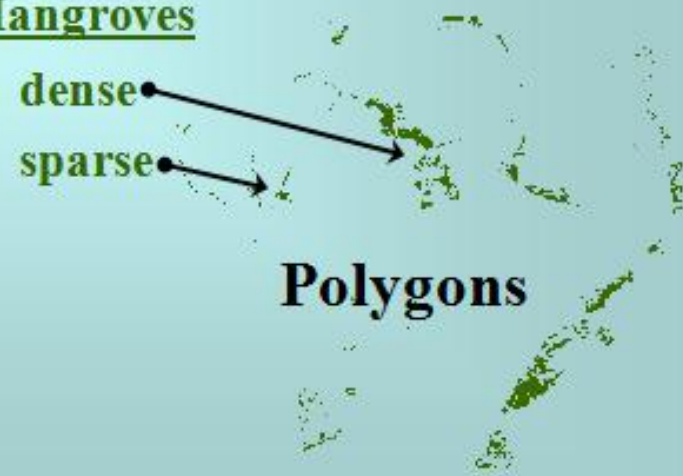
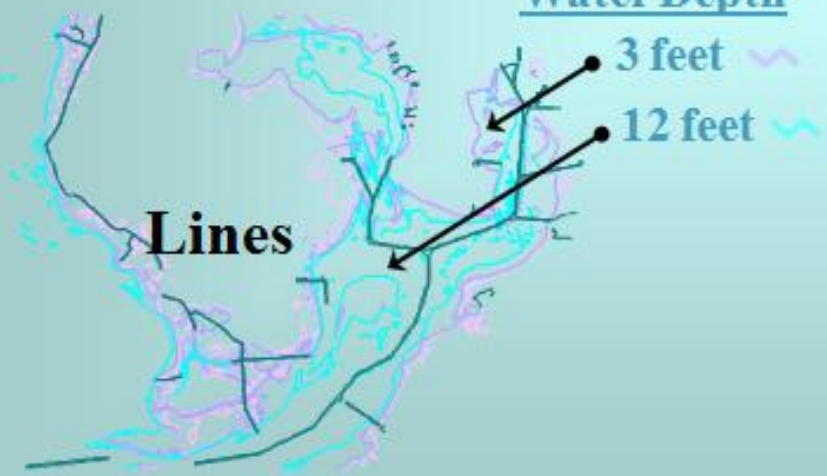
Lines

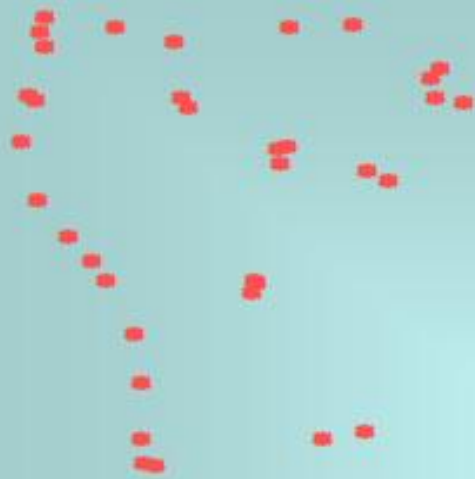
Mangroves

dense

sparse

Polygons





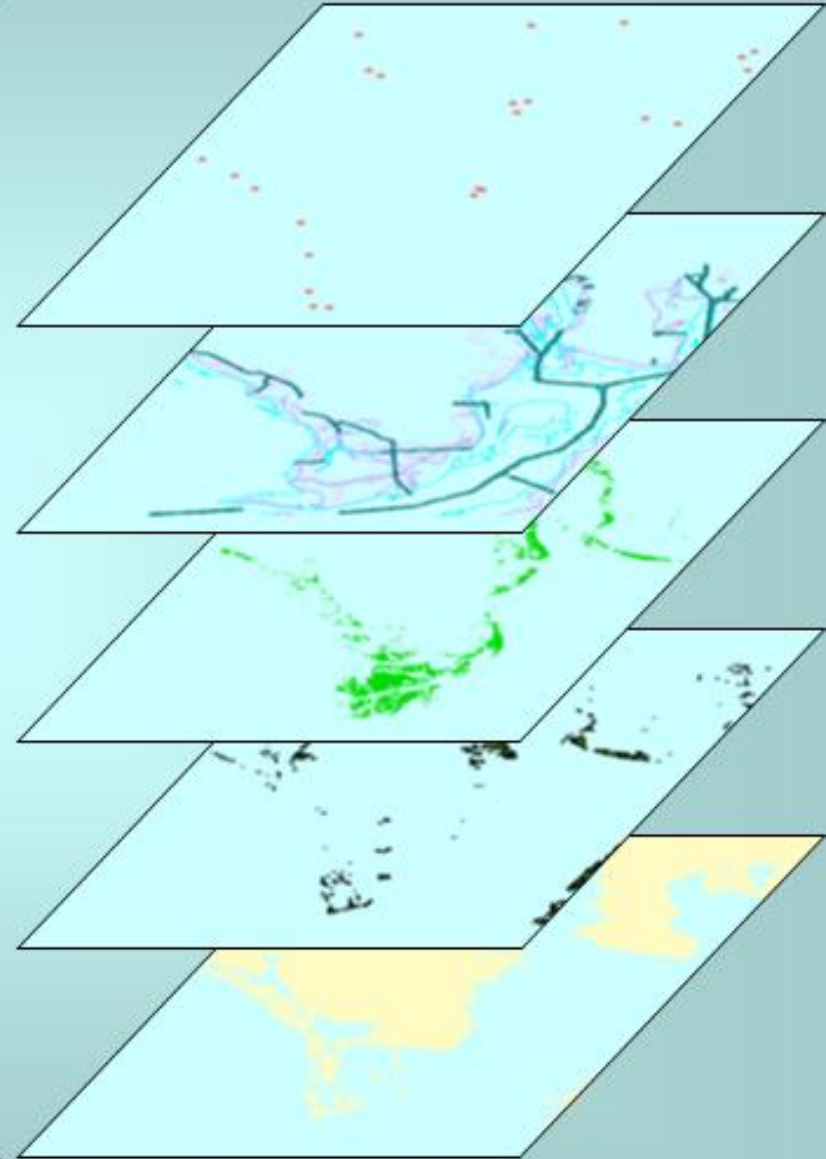
System

(How do we collect, store, and present the data?)





GIS Data Layers



Location: Where is it?

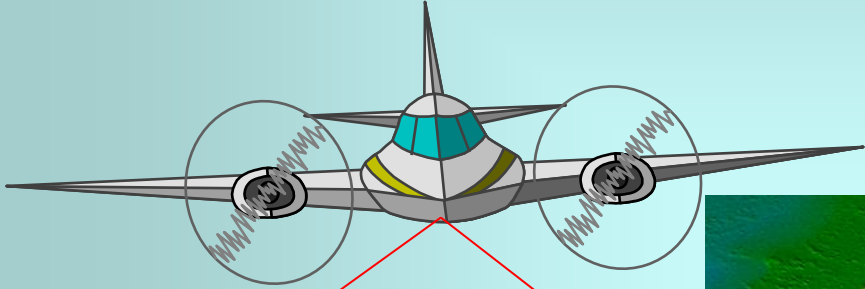
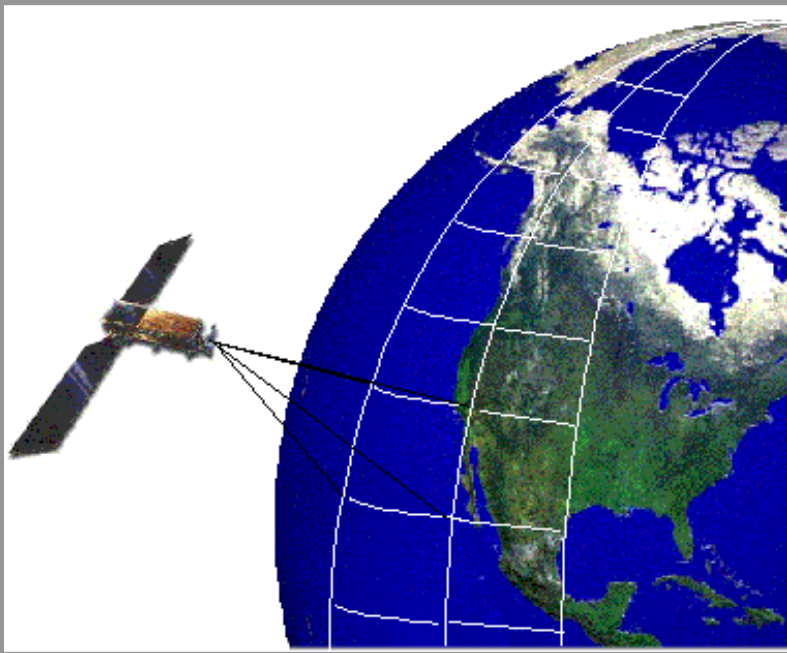
Trends: What has changed?

Patterns: What spatial patterns exist?

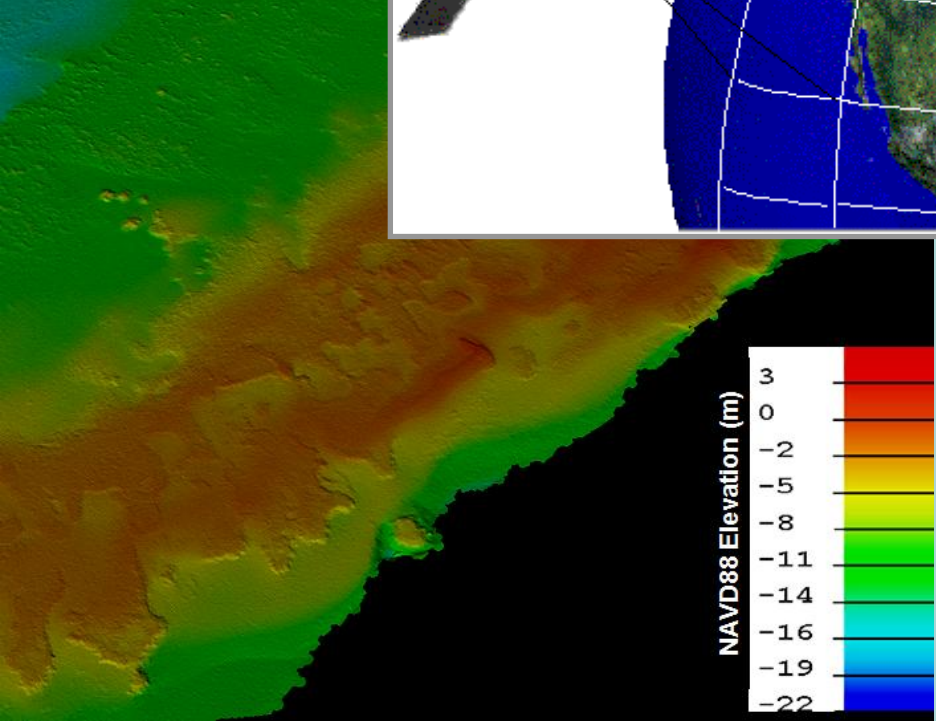
Modeling: What if?

How do we gather information using remote sensing?

Satellite

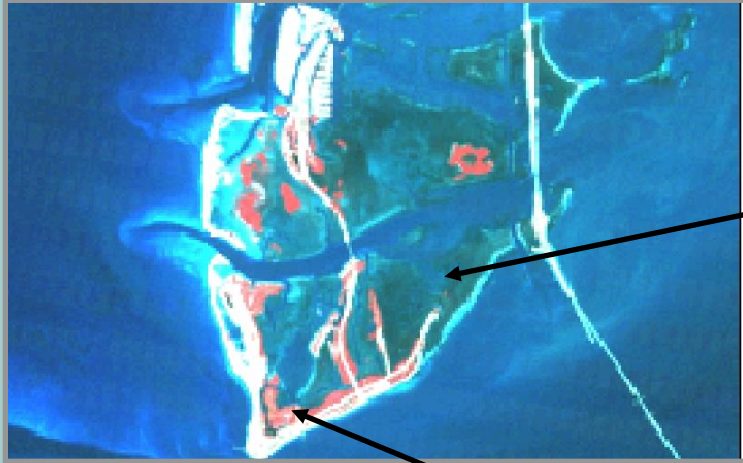


Aircraft



LiDAR or Sonar

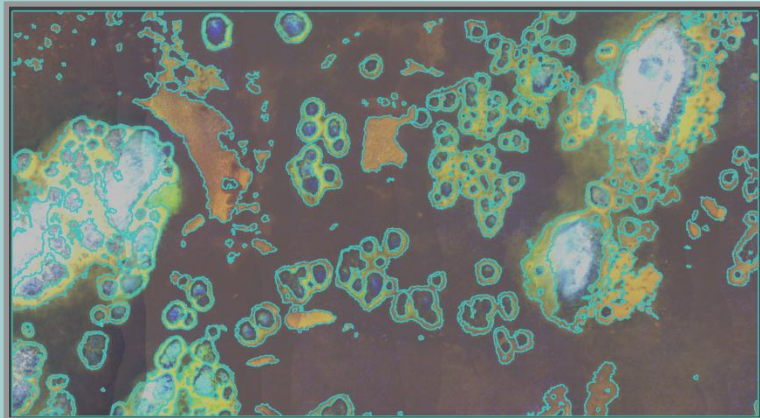
How does FWRI use remote sensing?



Seagrasses

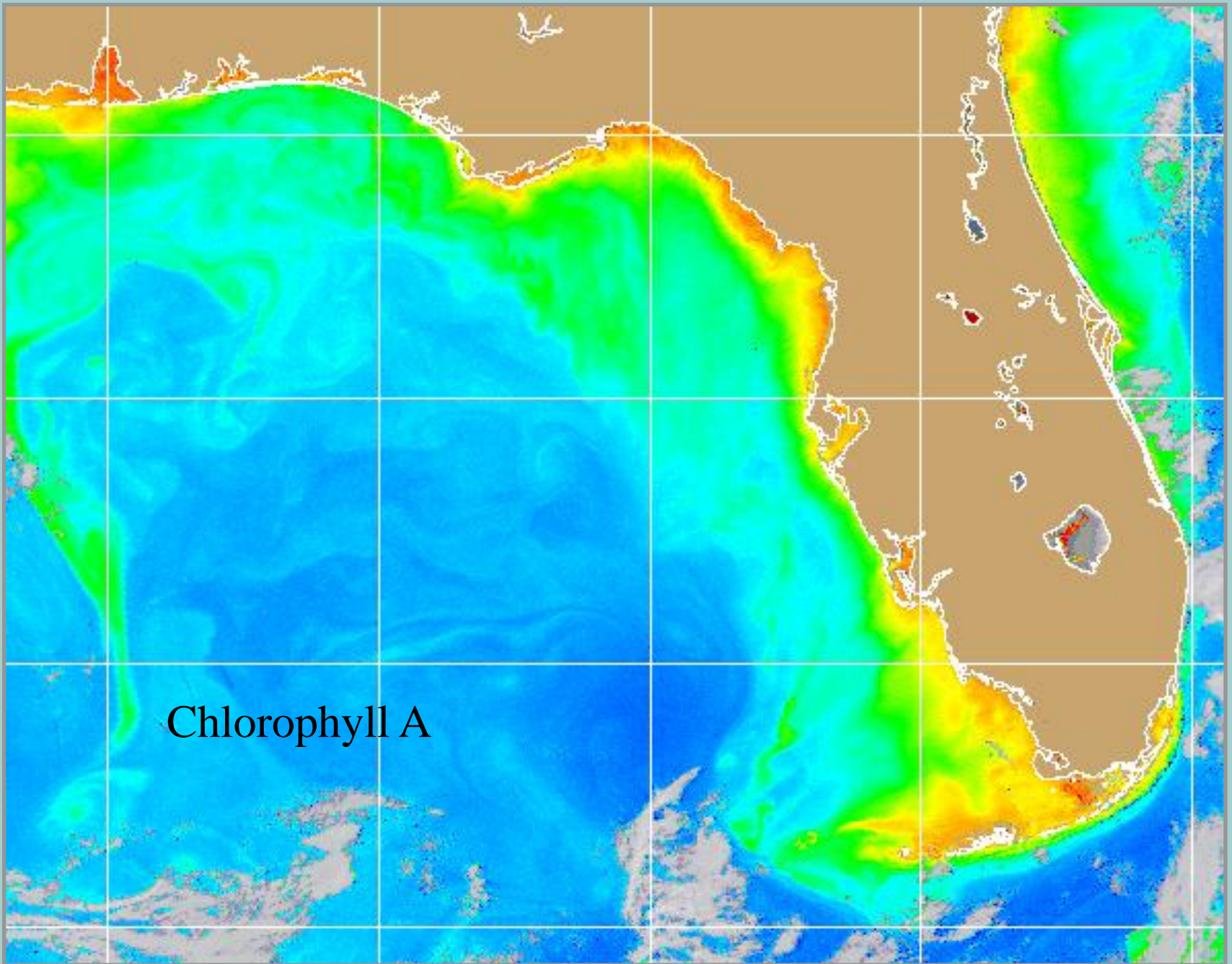


Mangroves



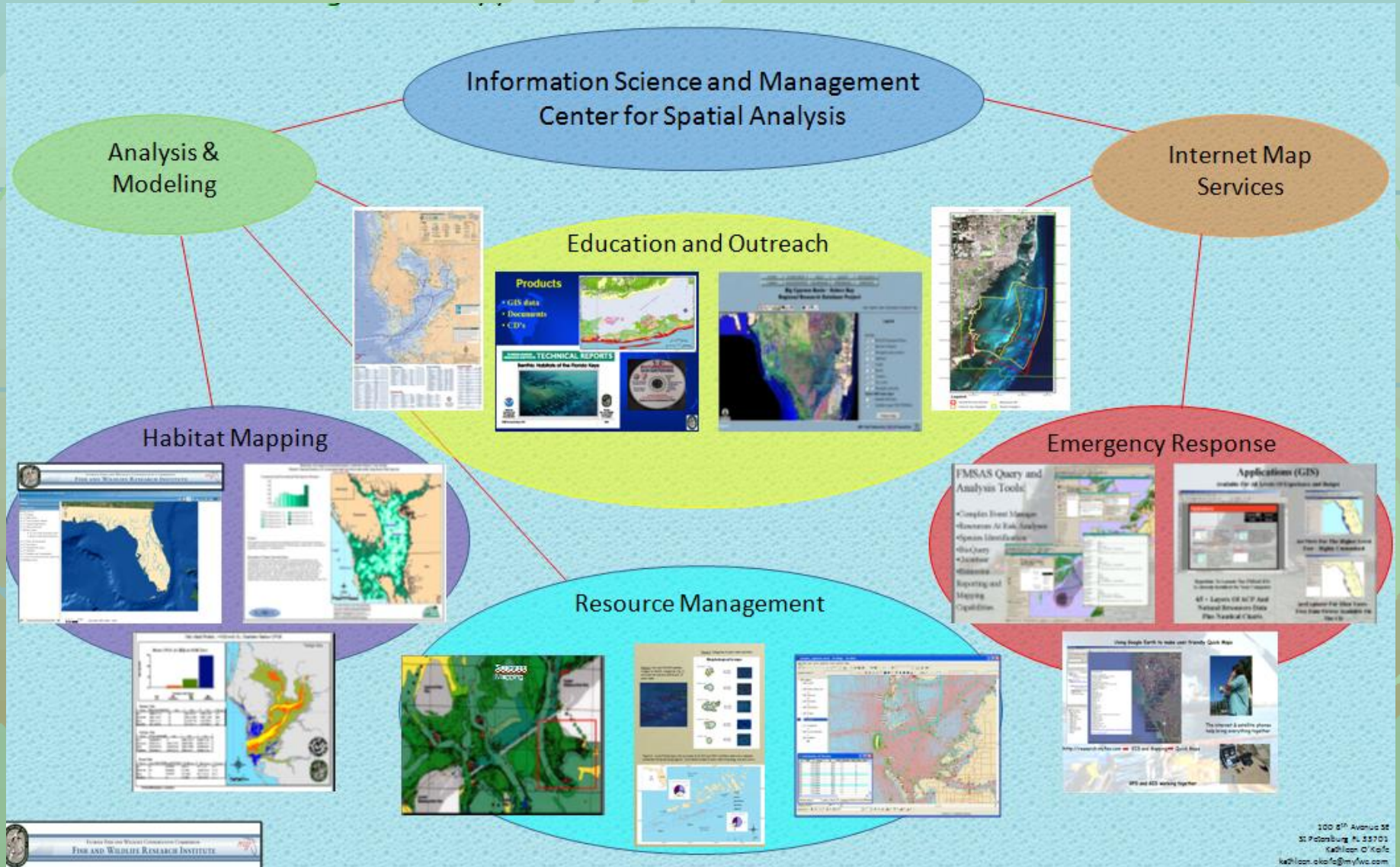
Corals





Chlorophyll A

How does FWRI present information to the Public?





Demonstration