



FKNMS Enforcement Priorities

Jeff Radonski (NOAA OLE)
Major Alfredo Escanio (Florida FWC)
Sean Morton (NOAA FKNMS)
Sanctuary Advisory Council
June 21, 2011



FKNMS Enforcement Priorities

- NOAA Office of Law Enforcement and Joint Enforcement Agreements (Radonski)
- FWC South Bravo Overview (Escanio)
- FKNMS Enforcement and Regulatory Overview (Morton)
- Advisory Council Discussion



Enforcement Resources

FKNMS Funded Enforcement Resources

- 6 Full Time FWC Law Enforcement Officers
 - 1 LE Captain (33%) and 1 Dispatch Officer
 - 5 Small Vessels (29' - 30')
 - SRV Peter Gladding (53') for Tortugas
 - 6 Law Enforcement Vehicles
 - Fuel, Maintenance, Repair, Office Space, Mess Supplies, etc.
 - 3 FTE Marine Mechanics
- = 3,250 hrs/yr of on- the water vessel patrol
= 8,348 hrs/yr of land based activity

Additional Enforcement Resources

- 2 NOAA Office of Law Enforcement Special Agents
- USCG Marine and Air Patrols

Sanctuary-Wide Prohibitions (see brochure / CFRs)



- Removing, injuring, or possessing coral / live rock
- Discharge and Deposit
- Dredging, drilling, alteration of seabed
- Vessel Operations – damage of coral, seagrass, prop scarring
- Anchoring on coral
- Vessel Operations – no wake w/in 100 yards of shoreline
- Diving / Snorkeling w/o dive flag
- Vessel Operations – endangering life, limb, marine resources, property
- Releasing exotic species
- Damaging marker / mooring / trap buoys, scientific equipment
- Moving, damaging injuring historical resources
- Taking protected wildlife
- Using possessing explosives, electrical charges
- Harvesting, possessing, landing any marine life species except as allowed by FFWCC Rule.

Enforcement Priorities: Marine Zones

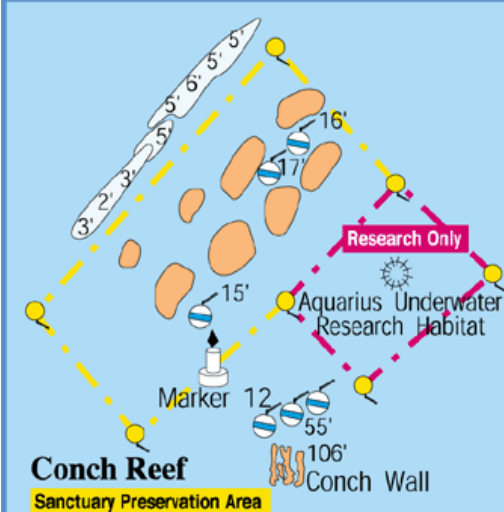
Sanctuary Preservation Areas (SPA). Restrictions: spearfishing, shell collecting, tropical fish collecting, fishing and other activities that result in the harvest of marine life by divers, snorkelers, and fishermen. In addition, direct physical impact to corals in these areas is restricted.

Ecological Reserves (ER's): Western Sambo and Tortugas. In addition to Sanctuary-wide regulations, special regulations have been set in place in these areas in order to protect resources.

Wildlife Management Areas (WMA). Public access restrictions in these areas include idle speed only/no wake, no access buffer, no motor, and limited closures.

Existing Management Areas (EMA). Looe Key and Key Largo Management Areas as well as the Great White Heron and Key West National Wildlife Refuges, and all the State Parks and Aquatic Preserves. Examples: Spearfishing, PWCs

Special Use Areas. There are four areas designated: Conch Reef, Tennessee Reef, Looe Key (patch reef), and Eastern Sambo Reef. These are all designated as research-only areas. No person may enter these areas except as specifically authorized by a valid permit.



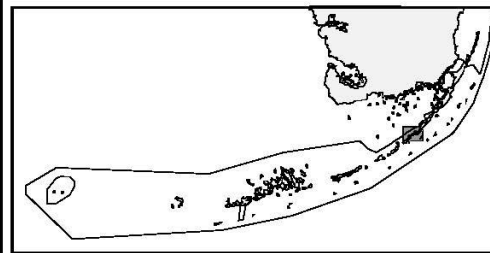
Enforcement Priorities: Marine Zones

Example: Wildlife Management Area – No Motor Zone

Vessel Restriction: “A vessel with an internal combustion motor or engine may access a “no-motor” zone only through the use of a push pole, paddle, sail, electric motor or similar means of propulsion.”





Wildlife Management Areas: Rodriguez Key, Dove Key, Tavernier Key



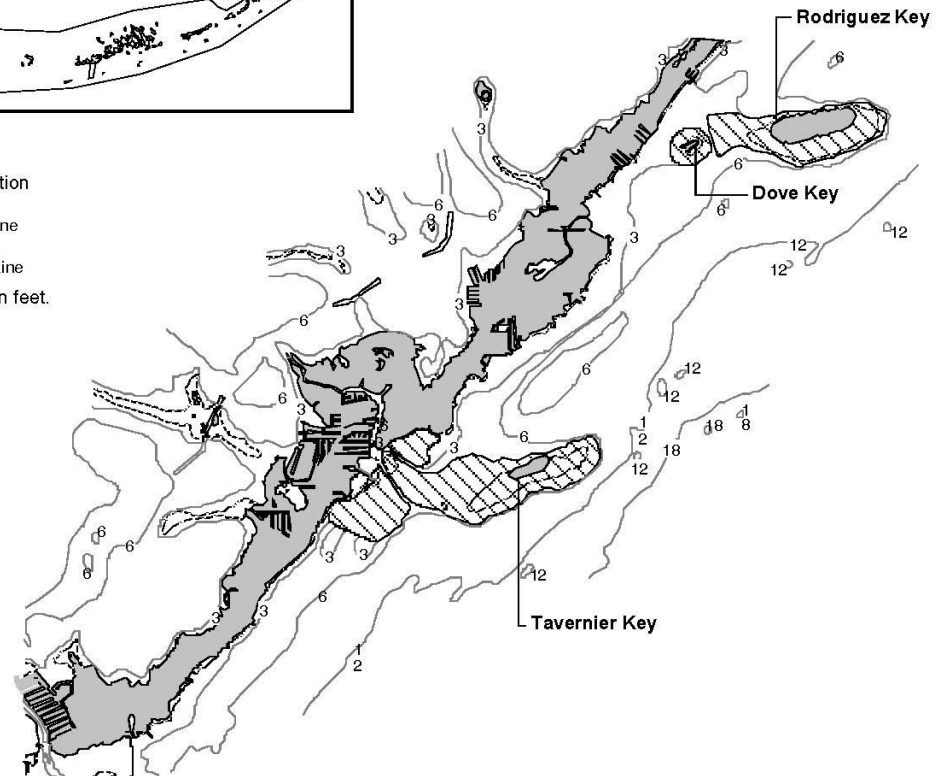
Boundaries shown are approximate.

Type of Restriction

 No Motor Zone

 Low Water Line

Bathymetry is in feet.



Draft JEA Enforcement Activity Breakdown (FY12)



At Sea Enforcement Activity	Personnel Hours	Vessel Hours
Tortugas Ecological Reserves	2600	650
Western and Eastern Sambo	200	200
Sanctuary Preservation Areas / Research Only Areas	1650	1650
Wildlife Management Areas Access Control	100	100
Personal Watercraft Operations Restrictions	50	50
Area to Be Avoided	100	100
Coral / Live Rock Removal Injury Possession	100	100
Special Management / Research	400	100
Grounding Responses	150	150
Discharges / Deposits	100	100
Historical/Cultural Resources	50	50
Total	5500	3250

Advisory Council Discussion

Potential Discussion Questions:

- What does the Advisory Council consider top priorities for enforcement of FKNMS regulations?
- Have your constituents raised other enforcement issues?
- Does the Advisory Council want to recommend additional specific management activities (e.g., agency coordination, outreach/education, asset acquisition)?
- Does the Advisory Council need more information about enforcement activity?