



U.S. Department of Transportation
Federal Highway Administration
Western Federal Lands Highway Division
Vancouver, Washington



"Commitment to Excellence"

SIGNOFF REVIEW

BOOK

for

<PROJECT NUMBER>

<PROJECT NAME>

(RETURN TO PS&E LAST)

SIGNOFF PACKAGE TO PS&E CHECKLIST

Project Number: WY PRA-YELL 103(1), 108(1)	Project Name: North Rim and Canyon Area Roads & South Rim Drive (Artist Point Parking Area, Promenade and Overlook)
--	---

Project Manager: Craig Dewey	HDM: Anna Varney
------------------------------	------------------

Designer: Grant Lindsey

CFT Members:

Bridge – Marc Veneroso
 Environment – Elisa Carlsen
 Geotechnical – Nathan Jenks
 Hydraulics – Sven Leon
 Construction – Howe Crockett

Materials – John Snyder
 Survey – Jeff Place
 Programming – Dick Bronder
 Right of Way/Utilities – N/A

The following documents and conditions must be met before projects can be forwarded to PS&E for review. Do not forward partially complete project Signoff Packages. The designer provides all documents unless otherwise noted and places them in the project directory in ProjectWise.

REQUIRED <small>(See footnotes)</small>	INCLUDED <small>(Yes/No)</small>	DOCUMENT	COMMENTS
4	Yes	Data for Synopsis in FEDBizOps <ul style="list-style-type: none"> FP 03 FBO Document FP 96 FBO Document 	<p>See Construction Contracting Documents for more information. If submitted with a preliminary plans posting state as such and provide date of posting.</p> <p>If there was a preliminary plans posting, this form only needs to be resubmitted if there are changes to the concept or philosophy of the project or changes in work.</p> <p>E-mail to Contracts at signoff. Include original signed cover sheet in signoff book.</p> <p>If applicable, approved options memo included as an attachment.</p>
3	Yes	Options Justification	<p>Options Justification and Options Justification Memo provided by PM.</p> <p>See Construction Documents/Memos for more information</p> <p>The approved options memo should be included as an attachment to FEDBizOps.</p>

1. No exceptions.
2. Not required for DOD (including OMAD), BLM, Emergency Relief Federally Owned (ERFO), and Earmarks other than PLD projects.
3. Include when applicable.
4. Required to post the project on FedBizOps site. Include at PS&E signoff or with preliminary plans letter.

SIGNOFF PACKAGE TO PS&E CHECKLIST

REQUIRED (See footnotes)	INCLUDED (Yes/No)	DOCUMENT	COMMENTS
1	Yes	e-Procurement Request Form <ul style="list-style-type: none"> • <i>PM Is “Point of Contact” and PM Branch Chief is “PM/COE”.</i> • <i>Dollar amount must match the Letter of Authorization amount (if applicable, see footnote 2).</i> • <i>Dollar amount must be at least as much as the Engineer’s Estimate “Total Construction Amount”.</i> • <i>Must include the accounting data funding code.</i> 	Construction e-Procurement Request Form located in WFL Electronic Form Library The Designer will provide initial information for this form and the PM will complete and send to the Procurement Request preparer. If there are multiple schedules, the amount must be greater than or equal to one of the schedules, at least the smallest schedule.
1	No	Procurement Request (PR) DOT F 4200.1 (for printing) <ul style="list-style-type: none"> • <i>Include estimated printing costs.</i> • <i>Must include the accounting data funding code.</i> • <i>Requisitioner and Funds Certifier must sign the request.</i> 	Form DOT F 4200.1 located in WFL Electronic Form Library The Designer will provide initial information for this form and the PM will complete. Estimate printing costs based on project size: Small: \$5,000; Medium: \$10,000; Large: \$15,000
3	Yes	Waiver From Sealed Bid <ul style="list-style-type: none"> • <i>Provide all pertinent data.</i> • <i>Include in the Procurement Request section of the signoff book.</i> 	After NEPA and before PIH stage, PM should send project information to the Acquisitions Strategy Team. This team will make a decision on the acquisition strategy for that project and the record of this decision will be held in acquisitions. For all projects not advertised under a sealed bid, the Request for Waiver from Sealed Bidding from sealed bid will be provided by the PM at signoff. See Construction Documents/Memos for more information.
2	Yes	Letter of Authorization (LOA) <ul style="list-style-type: none"> • <i>Authorized amount must match the Procurement Request amount.</i> • <i>Authorized amount must be at least as much as the Engineer’s Estimate “Total Construction Amount”.</i> • <i>The Financial Manager and the Director of Project Delivery must sign LOA.</i> • <i>The LOA must include the accounting data funding code.</i> 	Located with PD Sign-off Forms . The Designer will provide initial information for this form and the PM will complete. If there are multiple schedules, the authorized amount must be greater than or equal to one of the schedules, at least the smallest schedule.

1. No exceptions.
2. Not required for DOD (including OMAD), BLM, Emergency Relief Federally Owned (ERFO), and Earmarks other than PLD projects.
3. Include when applicable.
4. Required to post the project on FedBizOps site. Include at PS&E signoff or with preliminary plans letter.

SIGNOFF PACKAGE TO PS&E CHECKLIST

REQUIRED (See footnotes)	INCLUDED (Yes/No)	DOCUMENT	COMMENTS
1	Yes	Engineer's Estimate (EE) <ul style="list-style-type: none"> • Check with PS&E for current flagger rate. • For A/E designed projects the EE files must be transferred to WFL's computer system and have a file number assigned. • If multiple schedules, file numbers on summary sheet must match (i.e. 06_005A, 06_005B, 06_005C, etc.). • Project number (including state) and name must match Special Contract Requirements project number, and name in footer. • Pay item numbers, descriptions, pay units, quantities, and totals must match the Summary of Quantities and any applicable quantity summary tables. • Accounting data funding code must be filled in on the schedule summary. • Include contingencies and incentives as applicable (Partnering, etc.). • All data fields must be filled in on the summary sheet. • "Construction Engineering Amount" on summary sheet must match Construction Engineering Cost Report. 	<p>Include Flagger Rate document received from PS&E</p> <p>Contact IT (Gladys Gallardo) to accomplish the transfer.</p> <p>Contact IT (Gladys Gallardo) if the file numbers do not match.</p>
1	Yes	Construction Engineering (CE) Budget <ul style="list-style-type: none"> • Notice to Proceed and Fixed Completion dates must match the date on the Supporting Data for Contract Time document. • Document must be signed by COE. 	<p>The COE provides this form from PRMS.</p>
1	Yes	Contract Time – Use Critical Path Method (CPM) schedule <ul style="list-style-type: none"> • CPM flowchart is signed by the Construction Operations Engineer (COE). Do not make changes to the schedule without the concurrence of the COE (initialed and dated). • Include adequate time to advertise and award the project. Use the PS&E to NTP calculator to determine these dates. (Include a copy in book behind CPM). 	<p>See CPM's Made Easy for more detailed instructions on building CPMs. Sample CPM located with PD Sign-off Forms.</p> <p>Project information and signature block is located in the left tab of the header.</p> <p>Include critical submittals such as steel fabrication, fish passage windows, or other items that could affect construction timeline, as well as work restrictions, weather and wildlife, etc.</p> <p>See Construction Documents/Memos for more information.</p>

1. No exceptions.
2. Not required for DOD (including OMAD), BLM, Emergency Relief Federally Owned (ERFO), and Earmarks other than PLD projects.
3. Include when applicable.
4. Required to post the project on FedBizOps site. Include at PS&E signoff or with preliminary plans letter.

SIGNOFF PACKAGE TO PS&E CHECKLIST

REQUIRED (See footnotes)	INCLUDED (Yes/No)	DOCUMENT	COMMENTS
1	Yes	PS&E Assembly and Review (WFLHD-2) <ul style="list-style-type: none"> • All data must be filled in (project number, project name, etc. on first sheet.) • Applicable initials/dates filled in. • Signatures of Project Manager required. • Any remarks must be resolved. Initiator of remarks must state resolution, initial, and date when resolution occurred. • List physical data for this project (hydraulic reports, geotechnical reports & memorandums, bridge data, etc.) • Fill in all applicable permit data. • Include applicable letters of concurrence from agencies. 	<p>WFLHD-2 located with WFLHD Design Forms and Templates.</p> <p>The PM will schedule a Signoff meeting for all projects. If a CFT member cannot attend the meeting, they can either initial prior to the meeting or delegate a representative to attend the meeting in their place. Outstanding issues should be resolved prior to the Signoff meeting. The purpose of Signoff is to ensure that all comments from the Final review have been adequately addressed.</p> <p>Agency concurrence is provided by the PM and can include an e-mail, letter, or signed plan title sheet (for NPS projects).</p>
1	Yes	Highway Design Standards (WFLHD 3) <ul style="list-style-type: none"> • Fill in all pertinent data fields and obtain all signatures 	<p>WFLHD-3 located with WFLHD Design Forms and Templates.</p> <p>To be completed by PIH stage of a project.</p>
3	Yes	Brand Name or Equal Justification Memorandum <ul style="list-style-type: none"> • Provide all pertinent data, obtain approval signatures, and attach all support documentation. 	<p>Request for Name Brand or Equal Approval provided by CFT discipline requesting item.</p> <p>See Construction Documents/Memos for more information.</p>
3	No	Sole Source Justification	<p>Recommendation, Justification & Approval for Sole Source provided by CFT discipline requesting item.</p> <p>See Construction Documents/Memos for more information</p>
1	Yes	External Distribution List <ul style="list-style-type: none"> • List all external agencies or agency personnel and the number of solicitation copies they are to receive. Include e-mail addresses. • Include A/E firm for A/E Designs. • If Award Letter only, specify as such. 	<p>Located with PD Sign-off Forms.</p> <p>The designer will provide initial information for this chart and the PM will complete. Contracts may send a final distribution list for a QC check.</p>
1	Yes	Environmental Commitment Summary <ul style="list-style-type: none"> • Completed, signed, and dated. 	<p>Provided by the Environmental Specialist.</p>
1	Yes	Environmental Decision Document <ul style="list-style-type: none"> • CATX, FONSI, or ROD 	

1. No exceptions.
2. Not required for DOD (including OMAD), BLM, Emergency Relief Federally Owned (ERFO), and Earmarks other than PLD projects.
3. Include when applicable.
4. Required to post the project on FedBizOps site. Include at PS&E signoff or with preliminary plans letter.

SIGNOFF PACKAGE TO PS&E CHECKLIST

REQUIRED (See footnotes)	INCLUDED (Yes/No)	DOCUMENT	COMMENTS
3	Yes	Permits <ul style="list-style-type: none"> • <i>Permits must correlate with list in WFLHD –2.</i> • <i>Formatted and PDF documents created by Office Automation. Final documents stored in ProjectWise. Originals kept in Environmental Services.</i> 	Environmental Specialist provides this information to the designer who transfers to OA using the Office Automation Mailbox with a cc to Sharon Craven. OA places them in ProjectWise. No paper copy required.
3	Yes	Stormwater Pollution Prevention Plan (AK, ID, WA, WY) Erosion Control Plan (OR) <ul style="list-style-type: none"> • <i>Include plan, with certification if required.</i> • <i>Include Fire Suppression/Prevention Plan if required.</i> • <i>Formatted and PDF documents created by Office Automation. Final documents stored in ProjectWise.</i> 	Environmental Specialist provides this information to the designer who transfers to OA using the Office Automation Mailbox with a cc to Sharon Craven. OA places them in ProjectWise. No paper copy required.
1	Yes	Notice to Bidders Notice to Offerors (for negotiated projects) <ul style="list-style-type: none"> • <i>Transferred to ProjectWise through Office Automation.</i> • <i>Formatted by Office Automation.</i> 	Designer or A&E COTR to transfer to OA using the Office Automation Mailbox with a cc to Sharon Craven. No paper copy required.
1	Yes	Special Contract Requirements (SCRs) <ul style="list-style-type: none"> • <i>Entered into ProjectWise through Office Automation.</i> • <i>Table of Contents and SCRs formatted by Office Automation.</i> • <i>Ensure that ProjectWise state has been changed to “Contracts”.</i> 	Designer or A&E COTR to transfer to OA by changing ProjectWise state to “Office_Automation”. See Supplement 9.6.10-1 . No paper copy required.
1	Yes	Plans <ul style="list-style-type: none"> • <i>Title sheet signed and dated.</i> • <i>Project number and name same as footer in SCRs.</i> • <i>Summary of Quantity pay item numbers, pay item descriptions, pay item units, and quantities match Engineer’s Estimate and Quantity Tables in plan sheets.</i> • <i>Provide plans in PDF format. Provide one file for each section of the plans (sheets in numeric order). Also provide a separate PDF with all the sections together.</i> • <i>Inform Acquisitions if color plan sheets are required for printed plan copies. Indicate which sheets should be color.</i> 	Place original signed title sheet ahead of first tab in Signoff Book for delivery to Contracts. See Supplement 9.6.4.4-1 for title sheet instructions. E-mail Acquisitions when final PDF plan sheets are ready. Provide Acquisitions with the ProjectWise link. See Supplement 9.6.10-1 .

1. No exceptions.
2. Not required for DOD (including OMAD), BLM, Emergency Relief Federally Owned (ERFO), and Earmarks other than PLD projects.
3. Include when applicable.
4. Required to post the project on FedBizOps site. Include at PS&E signoff or with preliminary plans letter.

SIGNOFF PACKAGE TO PS&E CHECKLIST

REQUIRED (See footnotes)	INCLUDED (Yes/No)	DOCUMENT	COMMENTS
3	Yes	GEOPAK Earthwork Data Listing <ul style="list-style-type: none"> Provide in PDF format with cover sheet. 	E-mail Acquisitions the file location. Acquisitions will download them from ProjectWise. Use the normal file naming convention for the PDF files: [prefix] + "Earthwork" + ".pdf."
3	Yes	GEOPAK Cross-Sections <ul style="list-style-type: none"> Provide in PDF format with cover sheet. 	E-mail Acquisitions the file location. Acquisitions will download them from ProjectWise. Use the normal file naming convention for the PDF files: [prefix] + "XS" + [number] + ".pdf."
3	Yes	Geotechnical Reports/Memorandums <ul style="list-style-type: none"> List name of each Geotech Report and Memo to be distributed to interested bidders. Names and numbers of documents should match those shown on the WFLHD-2 form. 	Provided by the Geotech Specialist.
3	No	Backup Information for Independent Government Estimate (IGE) <ul style="list-style-type: none"> Information used to develop the IGE. 	Required for all negotiated contracts including 8(a) sole source. Place paper copies behind Support Data tab.
3	No	Non-Acquisition WFL web links have been updated <ul style="list-style-type: none"> Remove non-acquisition contact information from project web sites and replace with new contact information. During advertisement all project inquiries should be addressed to Contracts. 	Add the following text to the contact portion of the project web site: NOTICE: This project has been advertised or will soon be advertised. See our Construction Procurement webpage at: http://www.wfl.fhwa.dot.gov/contracting/construction/ for the most current information. All technical questions should be submitted to Plans_Spec@dot.gov . All non-technical questions should be submitted to WFL.Contracts@dot.gov .
1	Done	Schedule Handoff Meeting with Contracts <ul style="list-style-type: none"> Meeting to discuss project specific information regarding the PS&E package. 	Meeting to be scheduled by Project Manager. Invite both Contract Liaison Engineer and Contracting Officer

1. No exceptions.
2. Not required for DOD (including OMAD), BLM, Emergency Relief Federally Owned (ERFO), and Earmarks other than PLD projects.
3. Include when applicable.
4. Required to post the project on FedBizOps site. Include at PS&E signoff or with preliminary plans letter.

**Project No/Name: OR BLM 2011(2)
GRIZZLY MOUNTAN ROAD RESURFACING**

TO: Contracts Section		Date:
FROM:	Name	Phone
Project Manager	Karl Gleason	(360) 619 - 7823
Designer or COTR (if A&E Design)	Chris Conrad	(360) 619 - 7934
Highway Design Manager	Kirk Loftsgaarden	(360) 619 - 7512
Construction Operations Engineer	Chuck Disen	(360) 619 - 7979

NEPA/4(f) – PM Signature <i>(MUST be completed)</i>		
All NEPA & 4(f) documentation has been completed with the CE executed on (click & select date) 8/17/2011		
Name of Project Manger (type/print) Karl Gleason	PM Signature	Date signed

Attachments – Type of Procurement				
Check one below	Type of procurement	Documents that MUST be in place before submitting this Form		
		Sealed Bid Waiver* signed by DE	Best Value source selection plan** completed	Acquisition Plan complete
<input checked="" type="checkbox"/>	Sealed bid	n/a	n/a	May be required if > \$20 million. Check with CO.
<input type="checkbox"/>	IDIQ Task Order – Price Only	n/a	n/a	
<input type="checkbox"/>	IDIQ Task Order – Best Value	n/a	X	
<input type="checkbox"/>	Best Value	X	X	
<input type="checkbox"/>	Sole source 8a	n/a		

*This document can be found at: <http://wflnet.wfl.fhwa.dot.gov/departments/acquisition/construction.htm>

**Contact CO for assistance and examples

Attachments - Other		
Check if applicable	Document	Signed document attached showing CO Approval Document
<input type="checkbox"/>	Options Justification/Approval*	Click here to enter a date signed
<input type="checkbox"/>	Escalation (fuel/asphalt) Justification/Approval*	Click here to enter a date signed
Always required	Copy of the PS&E to NTP calculation using estimated delivery date**	n/a

*This document can be found at: <http://wflnet.wfl.fhwa.dot.gov/departments/acquisition/construction.htm>

**Go to: <http://www.wfl.fhwa.dot.gov/resources/design/tools/#schedules>. Select PS&E-to-NTP Calculator.

Location
This project is located approximately 10.9 Miles NW of Prineville, OR (city).

**Project No/Name: OR BLM 2011(2)
GRIZZLY MOUNTAN ROAD RESURFACING**

Client Agency		County		State	
BLM, Prineville District		Crook		Oregon	
Description of Work <small>(e/g/ grading, drainage, base, paving, structure)</small>					
This work consists of: grading, drainage and resurfacing					
Project Length					
1.652	Miles				Kilometers
Bridge info (when applicable)					
(edit/delete) The project includes construction of a ____ span, ____-foot long _____ girder bridge [with cast-in-place concrete deck]. Abutments are founded on _____. Piers are supported on _____. [The work includes demolition of the existing steel girder bridge upon completion of the new structure.]					

Does this project include Recovery Act Funds?	
Check one:	<input type="checkbox"/> Yes* <input checked="" type="checkbox"/> No
<small>* If YES and this is a sole source 8a, I have attached a completed "Recovery Act Justification". (See: http://wflnet.wfl.fhwa.dot.gov/departments/acquisition/construction.htm)</small>	

Price Range <small>(select one)</small>			
<input type="checkbox"/>	Less than \$500,000	<input type="checkbox"/>	Between \$5,000,000 and \$7,000,000
<input checked="" type="checkbox"/>	Between \$500,000 and \$1,000,000	<input type="checkbox"/>	Between \$7,000,000 and \$10,000,000
<input type="checkbox"/>	Between \$1,000,000 and \$2,000,000	<input type="checkbox"/>	Between \$10,000,000 and \$15,000,000
<input type="checkbox"/>	Between \$2,000,000 and \$3,000,000	<input type="checkbox"/>	Between \$15,000,000 and \$20,000,000
<input type="checkbox"/>	Between \$3,000,000 and \$5,000,000	<input type="checkbox"/>	Over \$20,000,000

Schedule type, Fixed completion date & Estimate			
Check one	Number of Schedules	Fixed Completion Date <small>(required info)</small>	Current Estimate
<input checked="" type="checkbox"/>	One Schedule		
	one	8/31/2012	\$ 939,612
<input type="checkbox"/>	Multiple Schedules (only one schedule awarded)		
	Sch A or X	Click here to enter a date.	
	Sch B or Y	Click here to enter a date.	
	Sch C or Z	Click here to enter a date.	
<input type="checkbox"/>	Base & Options (Base awarded initially; options awarded later)		
	Base	Click here to enter a date.	
	Option A	Click here to enter a date.	
	Option B	Click here to enter a date.	
	Option C	Click here to enter a date.	
	Option D	Click here to enter a date.	
	Option E	Click here to enter a date.	

**Project No/Name: OR BLM 2011(2)
GRIZZLY MOUNTAN ROAD RESURFACING**

Check one	Preliminary Plans & Transmittal Letter (Applicable to projects under snow during the Ad period. Prelims are posted on FBO in late summer or early fall when the project is accessible)
<input type="checkbox"/>	We ARE delivering preliminary plans & a draft transmittal letter*.
<input checked="" type="checkbox"/>	We are NOT delivering preliminary plans with a draft transmittal letter

*For a sample preliminary plans transmittal letter, see: <http://wflnet.wfl.fhwa.dot.gov/departments/acquisition/construction.htm>

Check one	Applicable Units of Measure
<input checked="" type="checkbox"/>	US Customary Units
<input type="checkbox"/>	Metric Units

Bid Item Instructions
<ul style="list-style-type: none"> • Indicate quantities and units of measurement in US Customary or Metric units as it applies to this project. • Delete items that do not apply. • Add missing items • Break out quantities by Schedule/Option <u>when applicable</u>.

	One Schedule Sch Name	Additional Sch Sch Name	Additional Sch Sch Name	Additional Sch Sch Name	Additional Sch Sch Name
DIVISION 150 – Project Requirements					
152 Construction Survey & Staking (yes/no)	Yes	Select	Select	Select	Select
153 Contractor Quality Control and Assurance (yes/no)	Yes	Select	Select	Select	Select
154 Contractor Sampling & Testing (yes/no)	Yes	Select	Select	Select	Select
155 Schedules for Construction Contracts (construction schedules) (yes/no)	Yes	Select	Select	Select	Select
157 Soil Erosion Control Devices (erosion control devices) Sediment Wattle Ditch Dam	2,520 Inft 7 each				
158 Watering for Dust Control	240 Mgal				
DIVISION 200 – Earthwork					
201 Clearing & Grubbing	224 sqyd				
203 Removal of Structures & Obstructions (structures, demolition) Pipe culvert Gate	10 each 1 each				

**Project No/Name: OR BLM 2011(2)
GRIZZLY MOUNTAN ROAD RESURFACING**

	One Schedule Sch Name	Additional Sch Sch Name	Additional Sch Sch Name	Additional Sch Sch Name	Additional Sch Sch Name
204 Excavation & Embankment <i>Road excavation</i> <i>Select topping</i>	461 cuyd 17,640 ton				
207 Earthwork Geotextiles (<i>geotextiles</i>)	638 sqyd				
DIVISION 250 – Slope Reinforcement and Retaining Walls					
251 Riprap <i>Riprap ditch, class2</i> <i>Placed Riprap Class 3 Riprap Apron</i> <i>Placed Riprap Class 3 Riprap Headwal</i>	8134 Inft 25 cuyd 32 cuyd				
DIVISION 300 – Aggregate Courses					
301 Untreated Aggregate Courses <i>(crushed aggregate)</i>	4,158 ton				
DIVISION 600 – Incidental Construction					
602 Culverts & Drains (<i>indicate one or both</i>) 18 inch 24 inch 18 equivalent Diameter 24 equivalent Diameter	210 Inft 108 Inft 272 Inft 68 Inft				
625 Turf Establishment <i>(indicate seeding or mulching separately)</i>	3.3 acre				
633 Permanent Traffic Control Devices (traffic control devices) Sign system	13.25 sqft				
634 Permanent Pavement Markings (<i>traffic pavement markings</i>)					
635 Temporary Traffic Control – <u>Flagger</u>	600				
635 Temporary Traffic Control – <u>Pilot Car</u>	300				
646 Buildings and Fixtures (<i>use pay item description</i>) Remove and reset mailbox, single Remove and reset mailbox, cluster box Remove and reset mailbox, newspaper	LPSM LPSM LPSM				

CONSTRUCTION E-PROCUREMENT REQUEST FORM



NEW PR AMENDMENT TO EXISTING PR Procurement Request No. _____ DATE SERVICE IS REQUIRED: 02/05/2009

NEW PR should be selected for any new project.

AMENDMENT TO EXISTING PR should be selected after the PR has been released from PRISM, but **before the contract has been signed.**

NAME (POINT OF CONTACT/COTR): Karl Gleason TELEPHONE: (360) 619-7823

AUTHORIZED REQUISITIONER: Ted Wood

FOR PROJECT FUNDS ONLY:

PROGRAM MANAGER: David Hilgendorf - ERFO

PROJECT NUMBER AND NAME: WA FS ERFO 2008(1)-20(1); Mallardy Creek Bridge and Hard Creek Bridge Emergency Repairs

CC Angy Liljedahl and Julee McTaggart during PRISM route for all new Construction Contract requests

DESCRIPTION OF ITEM OR SERVICE <i>briefly describe the services you are requesting.</i>	ESTIMATED COST AMOUNT
WA FS ERFO 2008(1)-20(1) Mallardy Creek Bridge and Hard Creek Bridge Emergency Repairs	\$198,061.50
	TOTAL ESTIMATED COST \$198,061.50

Statement of Essential Need: Construction Contract

ACCOUNTING DATA

PROJECT NUMBER	TASK NUMBER	ORG(ANIZATION)	BUDGET OBJECT CODE	AMOUNT	TAS #
1517537120114	540.CN.08X0.53	1753000000	25255 - Construction Contracts	\$198,061.50	69-0500
			25255 - Construction Contracts		
			25255 - Construction Contracts		

FOR PREPARER ONLY: PR TRACKING #: _____ DATE RECEIVED: _____

U.S. DEPARTMENT OF TRANSPORTATION FEDERAL HIGHWAY ADMINISTRATION	LETTER OF AUTHORIZATION AND/OR APPROVAL FOR FEDERAL LANDS HIGHWAY PROGRAM PROJECT ACTIVITY	STATE WYOMING	FLH PROJECT NO. WY PRA-YELL 103(1) WY PRA-YELL 108(1)
		FEDERAL UNIT YELLOWSTONE NATIONAL PARK	
		COUNTY PARK	FEDERAL AGENCY PROJ. NO. 76929, 54345

PROJECT ROUTE NO., TERMINI, LENGTH, DESCRIPTION OF WORK:

WY PRA-YELL 103(1) NORTH RIM AND CANYON AREA ROADS

Termini: 300+075.99 to 303+511.52

Length: 3.436 kilometers

Description: grading, base, paving, drainage, walls

WY PRA-YELL 108(1) SOUTH RIM DRIVE (ARTIST POINT PARKING AREA, PROMENADE, AND OVERLOOK)

Termini: 45+015 to 45+540, 55+000 to 55+201, & 65+000 to 65+029

Length: 0.755 kilometers

Description: grading, base, paving, drainage, walls

PROJECT CLASSIFICATION OR PHASE OF WORK	FLHP FUNDS AUTHORIZED	OTHER FUNDS (SOURCE*)	DATE
PLANNING AND RESEARCH			
PRELIMINARY ENGINEERING			
RIGHTS-OF-WAY			
CONSTRUCTION: Base Schedule	\$4,800,000	\$1,336,000	4/4/2007
CONSTRUCTION ENGINEERING			
OTHER (SPECIFY)			

SUMMARY of AUTHORIZATION

DTFH7007CN0410301: Account No. 1517560410301 540.00.F170.56 1756001404 25255 \$4,800,000

DTFH7007CN0410801: Account No. 1517560410801 R40.00.15F0.56 1756001404 25255 \$1,336,000*

SECTION 203 POO WFL

*\$386,000 NPS Repair/Rehabilitation funds and \$950,000 Yellowstone National Park Foundation funds

RECOMMENDED FOR APPROVAL

U.S. DEPARTMENT OF TRANSPORTATION
Federal Highway Administration

By: _____
FINANCIAL MANAGER

By: _____
DIRECTOR OF PROJECT DELIVERY

Date: _____

Date: _____

COVER SHEET

SOURCE SELECTION INFORMATION

See FAR 3.104

This document contains source selection information related to the conduct of a Federal agency procurement, the disclosure of which is restricted by Section 27 of the Office of Federal Procurement Policy Act (41 U.S.C. 423). The unauthorized disclosure of such information may subject both discloser and recipient of the information to contractual, civil, and/or criminal penalties as provided by law.

Project No. : MT PRA GLAC 10(21)

Project Name: GTSR REHAB, W TUNNEL TO HAYSTACK, PH 6

State: MT County: FLATHEAD

Federal Location: GLACIER NATIONAL PARK

NPS package No.: 90958

Construction Type: ReConstruction

File: 11_018A

C O M B I N E D S U M M A R Y

Account Nos.: Account 01 - Park Roads Fund
Account 02 - ERFO

Project Termini
West Tunnel to Haystack

Project Length
1.544 MI

	Total of Bid Items:	7,236,390.00
Incentives:		
Estimate for Quality Material Incentive		35,000.00
Estimate for Pavement Smoothness Incentive		35,000.00
Estimate for Asphalt Binder Incentive (1%)		6,930.00
Partnering		5,000.00

Total Construction Amount: 7,236,390.00

Construction Engineering Amount: 658,000.00

Total Estimated Cost: 7,236,390.00

Remarks:

Contract Completion Date: October 1, 2008
Reviewed by/Date: Wolf Team HDM / April 1, 2007
Final Estimate Prepared Date: March 30, 2007
Prepared By: JoAnn Designer

*Note ~ This is a sample Engineer's Estimate and does not reflect a past or current project.

The following Items are Contract Quantity:

20103-0000, 21101-2000

FOR OFFICIAL
USE ONLY

Project No. : MT PRA GLAC 10(21)

Project Name: GTSR REHAB, W TUNNEL TO HAYSTACK, PH 6

State: MT County: FLATHEAD

Federal Location: GLACIER NATIONAL PARK

NPS package No.: 90958

Construction Type: ReConstruction

File: 11_018A

A C C O U N T S U M M A R Y

Account No.: Account 01 - Park Roads Fund

Incentives:	Total of Bid Items:	6,891,890.00
Estimate for Quality Material Incentive		35,000.00
Estimate for Pavement Smoothness Incentive		35,000.00
	Total Construction Amount:	6,961,890.00
	Construction Engineering Amount:	626,674.85
	Total Estimated Cost:	7,588,564.85

Remarks:

Contract Completion Date: October 1, 2008

Reviewed by/Date: Wolf Team HDM / April 1, 2007

SAMPLE FOR OFFICIAL USE ONLY

Project No. : MT PRA GLAC 10(21)

Project Name: GTSR REHAB, W TUNNEL TO HAYSTACK, PH 6

State: MT County: FLATHEAD

Federal Location: GLACIER NATIONAL PARK

NPS package No.: 90958

Construction Type: ReConstruction

File: 11_018A

A C C O U N T S U M M A R Y

Account No.: Account 02 - ERFO

Incentives:	Total of Bid Items:	344,500.00
Estimate for Quality Material Incentive		0.00
Estimate for Pavement Smoothness Incentive		0.00
	Total Construction Amount:	344,500.00
	Construction Engineering Amount:	31,325.15
	Total Estimated Cost:	375,825.15

Remarks:

Contract Completion Date: October 1, 2008

Reviewed by/Date: Wolf Team HDM / April 1, 2007

FOR OFFICIAL
USE ONLY

Project No. : MT PRA GLAC 10(21)

04/15/11

Project Name: GTSR REHAB, W TUNNEL TO HAYSTACK, PH 6

File: 11_018A

Item No.	Quantity	Unit	Unit Price	Amount
15101-0000	MOBILIZATION			
Acc't 1	658000.00			658,000.00
Total	ALL	LPSM	658,000.00	658,000.00
15201-0000	CONSTRUCTION SURVEY AND STAKING			
Acc't 1	200000.00			200,000.00
Acc't 2	50000.00			50,000.00
Total	ALL	LPSM	250,000.00	250,000.00
15301-0000	CONTRACTOR QUALITY CONTROL			
Acc't 1	150000.00			150,000.00
Acc't 2	50000.00			50,000.00
Total	ALL	LPSM	200,000.00	200,000.00
15401-0000	CONTRACTOR TESTING			
Acc't 1	75000.00			75,000.00
Acc't 2	25000.00			25,000.00
Total	ALL	LPSM	100,000.00	100,000.00
15501-0000	CONSTRUCTION SCHEDULE			
Acc't 1	10000.00			10,000.00
Total	ALL	LPSM	10,000.00	10,000.00
15705-0100	SOIL EROSION CONTROL, SILT FENCE			
Acc't 1	350.00			2,450.00
Total	350	LNFT	7.00	2,450.00
15706-0300	SOIL EROSION CONTROL, SANDBAG			
Acc't 1	135.00			945.00
Total	135	EACH	7.00	945.00
15706-1000	SOIL EROSION CONTROL, INLET PROTECTION (TYPE 1)			
Acc't 1	10.00			2,000.00
Total	10	EACH	200.00	2,000.00

FOR OFFICIAL
USE ONLY

Project No. : MT PRA GLAC 10(21)

04/15/11

Project Name: GTSR REHAB, W TUNNEL TO HAYSTACK, PH 6

File: 11_018A

Item No.	Quantity	Unit	Unit Price	Amount
15706-1000	SOIL EROSION CONTROL, INLET PROTECTION (TYPE 2)			
Acc't 1	15.00			3,750.00
Total	15	EACH	250.00	3,750.00
15801-0000	WATERING FOR DUST CONTROL			
Acc't 1	2200.00			121,000.00
Total	2200	MGAL	55.00	121,000.00
20103-0000	CLEARING AND GRUBBING			
Acc't 1	2560.00			17,920.00
Total	2,560	SQYD	7.00	17,920.00
20301-0200	REMOVAL OF BOULDER			
Acc't 1	50.00			9,000.00
Acc't 2	10.00			1,800.00
Total	60	EACH	180.00	10,800.00
20301-1400	REMOVAL OF INLET			
Acc't 1	6.00			5,400.00
Total	6	EACH	900.00	5,400.00
20301-1900	REMOVAL OF PIPE CULVERT			
Acc't 1	12.00			36,000.00
Total	12	EACH	3,000.00	36,000.00
20301-2400	REMOVAL OF SIGN			
Acc't 1	24.00			3,600.00
Total	24	EACH	150.00	3,600.00
20301-2700	REMOVAL OF STRUCTURE (CONCRETE BARRIER)			
Acc't 1	50.00			7,500.00
Total	50	EACH	150.00	7,500.00
20301-2700	REMOVAL OF STRUCTURE (CROSS DRAIN)			
Acc't 1	5.00			25,000.00
Total	5	EACH	5,000.00	25,000.00

FOR OFFICIAL
USE ONLY

Project No. : MT PRA GLAC 10(21)

04/15/11

Project Name: GTSR REHAB, W TUNNEL TO HAYSTACK, PH 6

File: 11_018A

Item No.	Quantity	Unit	Unit Price	Amount
20301-2700	REMOVAL OF STRUCTURE (WAYSIDE EXHIBIT)			
Acc't 1	2.00			1,000.00
Total	2	EACH	500.00	1,000.00
20301-3000	REMOVAL OF TRASH RECEPTACLE			
Acc't 1	6.00			3,000.00
Total	6	EACH	500.00	3,000.00
20302-0200	REMOVAL OF CURB			
Acc't 1	750.00			3,750.00
Total	750	LNFT	5.00	3,750.00
20302-1200	REMOVAL OF GUARDRAIL			
Acc't 1	60.00			3,600.00
Total	60	LNFT	60.00	3,600.00
20302-1500	REMOVAL OF MASONRY GUARDWALL			
Acc't 1	1225.00			490,000.00
Total	1,225	LNFT	400.00	490,000.00
20303-0300	REMOVAL OF CONCRETE			
Acc't 1	550.00			27,500.00
Total	550	SQYD	50.00	27,500.00
20401-0000	ROADWAY EXCAVATION			
Acc't 1	1300.00			104,000.00
Total	1,300	CUYD	80.00	104,000.00
20402-0000	SUBEXCAVATION			
Acc't 1	100.00			12,000.00
Total	100	CUYD	120.00	12,000.00
20410-0000	SELECT BORROW			
Acc't 1	100.00			13,500.00
Total	100	CUYD	135.00	13,500.00

**FOR OFFICIAL
USE ONLY**

Construction Engineering Budget

ID PFH 60-1(1), SALMON RIVER BRIDGE

Internal CE budget

FY	Quarter 1	Quarter 2	Quarter 3	Quarter 4	FY total
Wkcd: C	Account #: F15-17-16-52-0600-001 C		Proj #: 1517160600001	Task #: 520.C0.F150.16	
FY 2007	\$0.00	\$0.00	\$0.00	\$132,400.00	\$132,400.00
FY 2008	\$145,100.00	\$139,300.00	\$87,200.00	\$0.00	\$371,600.00
Past Expend:	\$13,001.59	Future budget:	\$0.00	Wkcd C total	\$517,001.59
Wkcd: M	Account #: F15-17-16-52-0600-001 M		Proj #: 1517160600001	Task #: 520.M0.F150.16	
FY 2007	\$0.00	\$0.00	\$0.00	\$11,000.00	\$11,000.00
FY 2008	\$12,100.00	\$11,600.00	\$7,300.00	\$0.00	\$31,000.00
Past Expend:	\$0.00	Future budget:	\$0.00	Wkcd M total	\$42,000.00
Wkcd: N	Account #: F15-17-16-52-0600-001 N		Proj #: 1517160600001	Task #: 520.N0.F150.16	
FY 2007	\$0.00	\$0.00	\$0.00	\$16,500.00	\$16,500.00
FY 2008	\$18,100.00	\$17,400.00	\$10,900.00	\$0.00	\$46,400.00
Past Expend:	\$0.00	Future budget:	\$0.00	Wkcd N total	\$62,900.00
Wkcd: T	Account #: F15-17-16-52-0600-001 T		Proj #: 1517160600001	Task #: 520.T0.F150.16	
FY 2007	\$0.00	\$0.00	\$0.00	\$0.00	\$0.00
FY 2008	\$0.00	\$0.00	\$0.00	\$0.00	\$0.00
Past Expend:	\$2,386.12	Future budget:	\$0.00	Wkcd T total	\$2,386.12
Total Internal CE					\$ 624,287.71

Total Internal and External CE Budget \$ 624,287.71

CE begins: 07/09/2007

CE ends: 05/23/2008

Notice to proceed: 07/27/2007

Fixed Completion date: 05/01/2008

Construction amount: \$ 4,200,000

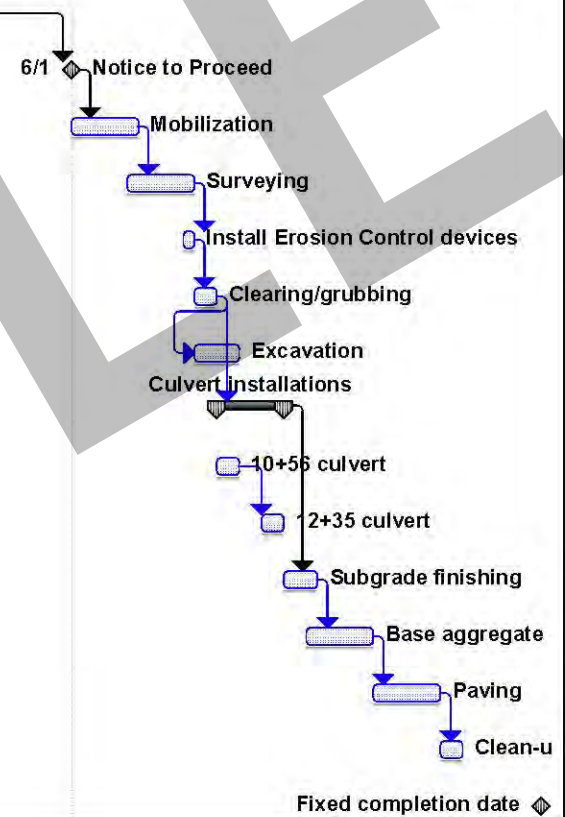
Percent CE: 14.9 %

Prepared by: Jane Traffalis, ID/MT COE

Date: 05/01/2007

Project Number: _____
 Project Name: _____
 Notice to Proceed: _____
 Fixed Completion Date: _____
 COE Approval: _____

ID	Task Name	Duration	Start	Finish	Predecessors	May					June			July		
						4/29	5/6	5/13	5/20	5/27	6/3	6/10	6/17	6/24	7/1	7/8
1	Award	0 days	Tue 5/1/07	Tue 5/1/07												
2	Notice to Proceed	0 days	Fri 6/1/07	Fri 6/1/07	1											
3	Mobilization	4 days	Fri 6/1/07	Wed 6/6/07	2											
4	Surveying	4 days	Wed 6/6/07	Mon 6/11/07	3FS-1 day											
5	Install Erosion Control devices	1 day	Mon 6/11/07	Mon 6/11/07	4FS-1 day											
6	Clearing/grubbing	2 days	Tue 6/12/07	Wed 6/13/07	5											
7	Excavation	4 days	Tue 6/12/07	Fri 6/15/07	6FS-2 days											
8	Culvert installations	4 days	Thu 6/14/07	Tue 6/19/07	6											
9	10+56 culvert	2 days	Thu 6/14/07	Fri 6/15/07												
10	12+35 culvert	2 days	Mon 6/18/07	Tue 6/19/07	9											
11	Subgrade finishing	3 days	Wed 6/20/07	Fri 6/22/07	8											
12	Base aggregate	4 days	Fri 6/22/07	Wed 6/27/07	11FS-1 day											
13	Paving	4 days	Thu 6/28/07	Tue 7/3/07	12											
14	Clean-up	2 days	Wed 7/4/07	Thu 7/5/07	13											
15	Fixed completion date	0 days	Fri 7/13/07	Fri 7/13/07												



Project: Sample CPM
 Date: Wed 2/22/12

Task		Milestone		External Tasks	
Split		Summary		External MileTask	
Progress		Project Summary		Split	

PS&E ASSEMBLY AND REVIEW

PROJECT:	WY	PRA-YELL 103(1) PRA-YELL 108(1)	North Rim and Canyon Area Roads South Rim Drive (Artist Point Parking Area, Promenade and Overlook)	Park
	State	Project No.	Name	County

REVIEWS/APPROVALS

Advance Plans to Agencies:	3/19/2007	NPS Approval:	3/23/2007
Sign-off Meeting:	4/2/2007	Forest Service Concurrence:	N/A
Final Plan-In-Hand:	3/15/2007	Agency Concurrence:	N/A
State DOT Concurrence:	N/A	Agency Concurrence:	N/A

PERMITS/CLEARANCES

Environmental: Cat Ex	9/28/2006	Other:	N/A
Right-of-Way:	N/A	Other:	N/A
Permits:	See page 3	Other:	N/A

Please review the attached documents and initial to indicate your approval of this project for advertisement. On the reverse side, list documents available for Bidder review under the appropriate heading.

Reviewer	BRIDGE	CONSTR	DESIGN	ENV	GEO	HYDR	MAT	R/W-UTIL	SURVEY
Initials									
Date									

Remarks: _____

Recommended for approval by: _____ Date: _____
Project Manager

INFORMATION AVAILABLE FOR REVIEW BY BIDDERS

Hydraulic and Hydrological Data: _____

Bridge Data: _____

Geotechnical Data: _____

Design Data: _____

Other Data: _____



STATE OF WYOMING

FEDERAL PERMITS	NOT APPLICABLE	APPLICABLE		
		Date	Attached	Expires
COE's Section 404 Permit Clean Water Act of 1977 (P.L. 95-217, Section 404)		1/23/2007	X	Under renewal
U.S. Coast Guard Permit Rivers and Harbors Act	N/A			
National Pollution Discharge Elimination System (NPDES) (Stormwater Discharge Permit)		1/23/2007	X	3/15/2011
STATE PERMITS				

SAMPLE

WESTERN FEDERAL LANDS HIGHWAY DIVISION HIGHWAY DESIGN STANDARDS

Project Number and Name: _____

Location: _____

Type of Project: New Construction Reconstruction RRR

Description of Work: _____

System: Forest Service National Park Service Other (describe) _____
 National Highway System (NHS) Non NHS

Functional Classification: ...select... _____

Owner Agency: _____

TRAFFIC	YEAR	ADT			PERCENT TRUCKS		D
		AVERAGE	SEASONAL	DHV	DHV	ADT	
Current							
Future							

Design Standards: AASHTO NPS Other (describe) _____

Terrain: Level Design Speed: _____

Posted or Regulatory Speed Limit: ?? MPH [?? km/h] Exception: _____

GEOMETRIC AND BRIDGE CRITERIA	STANDARD	AS DESIGNED	EXCEPTION
Traveled Way Width	?	??	
Shoulder Width	?	??	
Crown	2%	2%	
Horizontal Curvature	?	??	
Superelevation	e(max) = ?% Δ = 0.??%	e(max) = ?% Δ = 0.??%	
Grades	?%	?%	
Vertical Curvature	K(crest) = ? K(sag) = ?	K(crest) = ?? K(sag) = ??	
Stopping Sight Distance			
Horizontal Clearance to Structure (not clear zone)			
Vertical Clearance to Structure			
Bridge Width	?	??	
Bridge Loading			
Bridge Railing	NCHRP-350		

Descriptions of and reasons for exceptions to standards:

Analysis of risks and design considerations proposed to mitigate exceptions:

Describe guidelines used and any variances from recommended Roadside Design (clear zone, guardrail) guidelines:

RECOMMENDED ACTION:

- There are no exceptions to applicable standards, and the project should proceed with the final PS&E.
- There are exceptions to standards as listed on the front sheet and these exceptions have been reviewed with the appropriate client, cooperators, and interested agencies and parties, and are considered acceptable.

PREPARED BY:

Date

Lead Designer

APPROVAL IS RECOMMENDED:

Date

...select...Highway Design Manager

Date

Stephen Chapman, Highway Standards Engineer

I CONCUR WITH THE ABOVE RECOMMENDATIONS:

Date

...Official from maintaining agency...

Date

Dennis C. Quarto, Project Development Engineer

THE ABOVE RECOMMENDATIONS ARE APPROVED:

Date

Robert B. Lale, Director, Project Delivery



U.S. Department
of Transportation

**Federal Highway
Administration**

Memorandum

Western Federal Lands Highway Division
610 E. Fifth Street
Vancouver, WA 98661-3801

Date: ??

In Reply Refer To: XXX-XX

From: Xxxxx Xxxxxx
Highway Designer or Project Manager

To: Xxxx Xxxxx
Contracting Officer

Subject: ACTION: Request for Brand Name or Equal Approval
Proj No???
Proj name?????

We are hereby requesting authorization to use a brand name product(s) for the above referenced project. The requested product(s) will be use according to Section **??157???.Soil Erosion Control???**, Item **??15705-1700 Soil erosion control, filter berm**, and materials Section **??713.13A Filer Berms**. A brief narrative describing the history and reasoning behind this request is attached.

Federal Acquisition Regulations (FAR) Subpart *11.104 Use of band name or equal purchase descriptions*, states:

(a) While the use of performance specifications is preferred to encourage offerors to propose innovative solutions, the use of brand name or equal purchase descriptions may be advantageous under certain circumstances.

(b) Brand name or equal purchase descriptions must include, in addition to the brand name, a general description of those salient physical, functional, or performance characteristics of the brand name item that an "equal" item must meet to be acceptable for award. Use brand name or equal descriptions when the salient characteristics are firm requirements

In conformance with FAR Subpart 11.104, I submit the following information:

Narrative: ???????

Product Name: ????????

Manufactured by: ???Name/Address???



Date: **?????**
Request for Name Brand or Equal Approval
??project no/name??
Page 2

Phone: ????????
Fax: ???????
Email: ????????

Salient physical, functional, or performance characteristics that an approved equal must meet to be acceptable: See proposed subsections attachment concerning Subsections **??No. & name??**, and **7?? & name??**, which show the salient characteristics.

(2) Attachments
Brief Narrative (history/reasoning)
Proposed Subsections (Bid item subsection & 700 subsection)

cc: Design Book

SIGNATURES

Pursuant to FAR Subpart 11.104:

Requested by: _____ Date: _____

????insert name???

??? Highway Design Manger or Project Manager

Approved by: _____ Date: _____

?????

Contracting Officer

NOTE: Include this approved document with the items submitted to PS&E at Sign-off.

External Distribution List

WY PRA-YELL 103(1) and WY PRA-YELL 108(1)

North Rim and Canyon Area Roads & South Rim Drive (Artist Point Parking Area, Promenade and Overlook)

Person/Title	Agency Name/address	Email Address	Number of copies of solicitation package (0, 1, 2, etc.)	Receive copy of award letter (yes/no)	Other
Nancy Ward	Yellowstone National Park PO Box 168 Yellowstone, WY 82190-0168	address@nps.gov	5	Yes	
Suzanne Lewis Superintendent	Yellowstone National Park PO Box 168 Yellowstone, WY 82190-0168	address@nps.gov	0	Yes	
[Name] [Title]	[Agency] [address]				
[Name] [Title]	[A/E Firm] [address]				

**Minuteman Missile Base Maintenance Area Road Rehabilitation Project
MT OMAD 18(40)
Environmental Commitment Summary
February 7, 2007**

Listing of Environmental and Cultural Resource Documentation, Permits, and Mitigation Commitments

The PS&E package for the Minuteman Missile Base Access Roads Project, MT OMAD 18(40), has been reviewed for compliance with environmental commitments as recorded in project NEPA documentation and associated project correspondence. The Special Contract Requirements (SCRs) used for this review are attached.

Project NEPA documentation and supporting documentation in which commitments were required is as follows:

- *Categorical Exclusion Minuteman Missile Base Access Roads*, WFLHD, February 7, 2007
- *Project Checklist*, WFLHD, February 7, 2007

The project is below the threshold for federal regulatory permits. The Contractor will be required to obtain all permits and authorizations for contractor selected sources associated with this project.

No mitigation measures were required as a result of the consultations, conferencing, coordination, and the resultant effects determinations, project permits and authorizations and associated requirements. However, best management practices have been incorporated into the project to protect natural resources. Specific commitments and the parties responsible for completing them are identified in the following tables. The WFLHD is ultimately responsible for ensuring that all commitments are met and for recording completed tasks in the tables. Where the WFLHD is listed as the responsible party, then the WFLHD is responsible for completing the task as well as completing the table.

Legend	
Term in Table	Refers to
CE	Categorical Exclusion
CP	Contract Plan Sheets
ECP	Stormwater, Erosion Control, and Sediment Control Best Management Practices
FP-03	Standard Specifications For Construction of Roads and Bridges on Federal Highway Projects FP-03
MAFB	Malmstrom Air Force Base Requirement
SCR	Special Contract Requirements for the project
USFWS	Teleconferencing with the US Fish and Wildlife Service

Commitment	Source	Documented	Responsible	Completed (Date and Initials)
Install and maintain erosion and sediment control measures, including straw bales, at all crossings where water may be present. Retain measures in place and maintain them until the site is revegetated and in a stable condition.	CE	CP N.1 – N.2 ECP (SCR Section I) SCR 157.04 SCR 157.06 SCR 157.08	Contractor	
Thoroughly wash vehicles and equipment to remove weed seeds prior to moving onto the project (including material sources) and when moving from one site to another.	MAFB	SCR 107.10	Contractor	
Store all food, toiletries, and other potential bear attractants in bear-proof containers and make these items unavailable to bears when working in grizzly bear habitat (Routes F8, F9, and F11).	CE	SCR 107.10	Contractor	

Commitment	Source	Documented	Responsible	Completed (Date and Initials)
Remove all trash from the project site each day and dispose of trash in a way that is unavailable to bears when working in grizzly bear habitat (Routes F8, F9, and F11).	CE	SCR 107.10	Contractor	
Do not use seeding mixes or straw bales or other materials that contain vegetation known to attract bears when working in grizzly bear habitat (Routes F8, F9, and F11). Species that attract bears include most <i>Trifolium</i> (clover) species.	CE	SCR 107.10	Contractor	
Do not feed bears.	CE	SCR 107.10	Contractor	
Report grizzly bear sightings or incidents to the CO and MAFB personnel as soon as possible.	CE	SCR 107.10	Contractor	
Modify construction activities any time the potential of compromising the safety of a grizzly bear is identified.	CE	SCR 107.10	Contractor	
Apply dust palliative treatments according to manufacturer's instructions. Obtain the Material Safety Data Sheet for the product, and maintain this information in an accessible location at the project site.	CE	SCR 107.10	Contractor	
Provide a Hazardous Spill Plan or SPCCP	CE	SCR 107.10 ECP (SCR Section I)	Contractor	
Limit construction-caused delays to 30 minutes throughout the project.	CE	SCR 156.06	Contractor	
Photograph the bridge on Route A-6 prior to construction. Take photos from each approach, on each side of the bridge as well as straight on. Photograph details of the structure—existing condition of decking, guardrails, and other details. Provide a CD or prints of the photos to Environment at least 3 days prior to redecking.	MAFB		WFLHD	

CERTIFICATION:

I hereby certify that the above documents and permits are those necessary to construct this project, that they are complete and accurate as of the date of this signature, and that copies of each are on file in the Idaho/Montana Environmental Section and are incorporated into the PS&E for this project:

Cody Jones, S. Brooks and Associates

Date

Terri L. Thomas, Environmental Manager

Date