



DEEP WATER HORIZON DATA AND INFORMATION

ERMA Gulf Response

<http://www.restorethegulf.gov/release/2011/10/28/mapping-response-deepwater-horizon-oil-spill>

The Environmental Response Management Application (ERMA®) Gulf Response is an online mapping tool that provides you with up-to-date information about the spill response effort in the Gulf of Mexico. Developed by NOAA with the U.S. EPA, Coast Guard, and the Department of Interior, this site offers a visual and centralized means of accessing spill response information. It represents the federal government's commitment to providing clear and transparent information on the 2010 Deepwater Horizon/BP oil spill.

RestoretheGulf.gov

<http://www.restorethegulf.gov/>

RestoretheGulf.gov is the official website of United States Government's response to the Deepwater Horizon Oil spill event.

National Oceanographic Data Center (NODC) Incident Support for Deepwater Horizon

<http://www.nodc.noaa.gov/General/DeepwaterHorizon/support.html>

The NODC Incident Support for Deepwater Horizon Oil includes archived Deepwater Horizon Data, Climatology Products, Ocean Currents Data, Resources on Oil Spills, Response, and Restoration, Coastal Ecosystem Maps, and Ocean Profile Data.

The Joint Analysis Group (JAG) for Surface and Sub-Surface Oceanography, Oil and Dispersant Data

<http://ecowatch.ncddc.noaa.gov/JAG/data.html>

The JAG is a working group with membership from key agencies including NOAA, EPA, and the White House Office of Science and Technology Policy. The JAG was formed to analyze sub-surface oceanographic data being derived from the on-going coordinated sampling efforts by private, federal and academic scientists. This page provides direct access to the JAG reports and links to other sources of data.

Data.Gov/RestoretheGulf

<http://www.data.gov/restorethegulf/>

Due to the high level of interest in the on-going oil spill in the Gulf of Mexico, Data.gov is featuring data from the Department of Energy, EPA, NOAA, the Department of the Interior, and the states of Florida and Louisiana related to the spill, its effects, and the cleanup effort.

Naval Oceanographic Office Special Support-GOMEX Mississippi Canyon 252 Oil Spill

<http://ecowatch.ncddc.noaa.gov/JAG/Navy/>

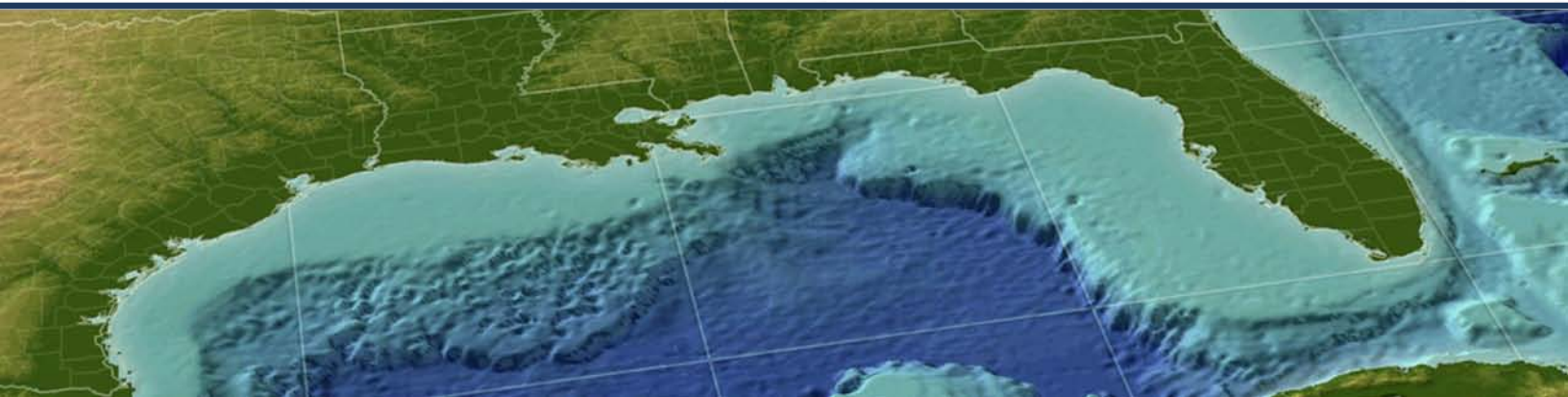
This page provides direct access to products and information from the Naval Oceanographic Office including bathymetry, glider data, specialized imagery, model output, and satellite analysis.

NOAA Deepwater Horizon Archive

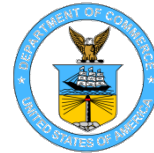
<http://www.noaa.gov/deepwaterhorizon/>

The Deepwater Horizon Archive is designed for many users, from scientists and researchers seeking data to citizens wanting to learn more about the spill's impact on the Gulf.

Continued on back page



DEEP WATER HORIZON DATA AND INFORMATION



*For more information
contact:*

Rost Parsons, PhD
NOAA's National
Oceanographic Data Center
(rost.parsons@noaa.gov)

Carl Childs, PhD
NOAA's Office of Response
and Restoration
Technical Services
(carl.childs@noaa.gov)

EPA Response to BP Spill in the Gulf of Mexico

<http://www.epa.gov/bpspill/>

Environmental data, including air quality and water samples, will be posted and frequently updated on this site as it is collected and validated by EPA's response teams along the impacted coastlines.

Deepwater Horizon Oil Spill Research and Monitoring Activities Database

<http://gulfseagrant.tamu.edu/oilspill/database.htm>

This database was developed by NOAA and serves as a single location to upload and access information about research and monitoring activities related to the Deepwater Horizon oil spill. The database contains brief descriptions of activities but not raw data.

NOAA Damage Assessment, Remediation & Restoration Program (DARRP)

<http://www.darrp.noaa.gov/>

NOAA Damage Assessment, Remediation & Restoration Program (DARRP) is coordinating data collection efforts with partners in five states (Louisiana, Mississippi, Alabama, Florida, and Texas), and the Department of the Interior (including the U.S. Fish and Wildlife Service, National Park Service, and Bureau of Land Management). BP is also participating in many of the data collection efforts.

National Marine Fisheries Service (NMFS) Southeast Regional Office — St. Petersburg

http://sero.nmfs.noaa.gov/deepwater_horizon_oil_spill.htm

This page includes map of fishery closure boundaries (updated daily), fishery bulletin, current news, state closure information, fisheries, protected resources and habitat, and general information.

National Weather Service New Orleans/Baton Rouge Deepwater Horizon Decision Support Page

<http://www.srh.noaa.gov/lix/?n=embriefing>

This decision support page includes spot forecasts, top graphics, tropical weather, radar sites, forecasts/meteorgrams, offshore forecasts, wind forecast/analysis graphics, and wave forecast graphics.

NWS Mobile Deepwater Horizon Decision Support Page

<http://www.srh.noaa.gov/mob/?n=oilspillsupportpage>

This decision support page includes six hour coastal thunderstorm outlook, regional radar summary, latest special marine warning, latest marine weather statements, tide information, and shoreline forecasts.

NOAA Environmental Satellite, Data and Information Service (NESDIS) Satellite Derived Surface Oil Analysis Products

<http://www.ssd.noaa.gov/PS/MPS/deepwater.html>

The Experimental Marine Pollution Surveillance Report (EMPSR) is produced by trained satellite analysts in the Satellite Analysis Branch (SAB), within the NOAA/NESDIS Office of Satellite Data Processing and Distribution

Air Resources Laboratory (ARL) Forecast Trajectory Maps for Gulf of Mexico

http://ready.arl.noaa.gov/READY_traj_gulfmex.php

The trajectories shown on this page represent where hypothetical atmospheric releases of material are predicted to be transported.