

Global Ocean Heat and Salt Content

World Ocean Atlas

Regional Climatologies

- Gulf of Mexico
- East Asian Seas
- Arctic

World Ocean Database

International Atlases and Publications

- Surface Marine Data
- Plankton
- International ocean exploration

WMO/UNEP Intergovernmental Panel on Climate Change

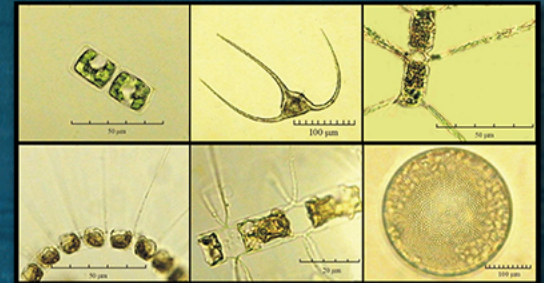
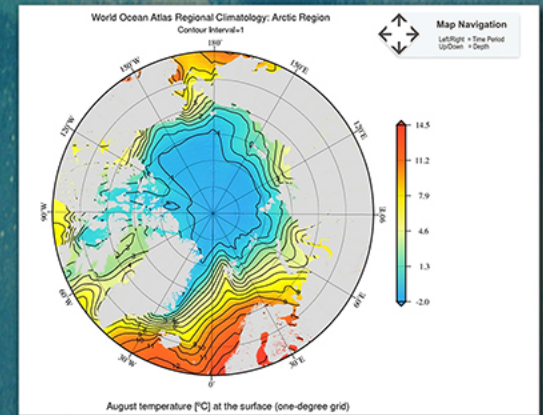
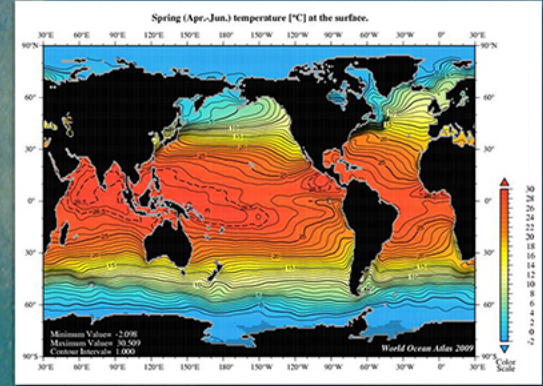
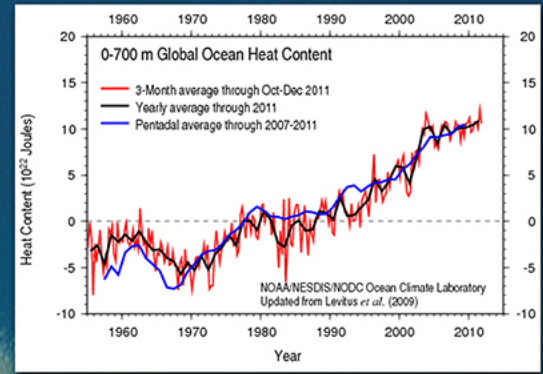
The Ocean Climate Laboratory (OCL) is a division of the National Oceanographic Data Center (NODC). The primary objectives of the OCL are to:

- Improve the quality of the NODC's oceanographic data archives by using the data to perform scientific analyses;
- Develop improved ocean climatologies for annual, seasonal, and monthly compositing periods;
- Investigate interannual-to-decadal ocean climate variability using historical oceanographic data;
- Build scientifically, quality-controlled global oceanographic databases;
- Facilitate international exchange of oceanographic data.

The OCL includes the International Data Exchange Group that conducts programs related to international affairs and oceanographic data exchange and also supports World Data Center for Oceanography, Silver Spring (WDC). Operated under the auspices of the U.S. Academy of Sciences, WDC is one of the U.S. discipline subcenters within the World Data Center system. There are two other World Data Centers for Oceanography: World Data Center for Oceanography in Obninsk (Russia), and World Data Center for Oceanography in Tianjin (People's Republic of China).

The OCL directs the international Global Oceanographic Data Archaeology and Rescue (GODAR) Project. Initiated by the NODC and WDC, this project was subsequently endorsed by the Intergovernmental Oceanographic Commission. The GODAR Project has resulted in an increase of over 8,000,000 historical ocean temperature casts, ~218,700 plankton casts, as well as many other data.

All data are made available internationally without restriction consistent with the data policy of World Data Centers.



Ocean Climate Laboratory

NOAA National Oceanographic Data Center