



REPLY TO
ATTENTION OF:

DEPARTMENT OF THE ARMY
US ARMY INSTALLATION MANAGEMENT COMMAND
HEADQUARTERS, UNITED STATES ARMY GARRISON
4551 LLEWELLYN AVENUE, SUITE 5000
FORT GEORGE G. MEADE, MARYLAND 20755-5000

IMME-ES

21 DEC 2012

MEMORANDUM FOR SEE DISTRIBUTION

SUBJECT: Off-Limit Areas/Establishments

1. Reference Joint Army Regulation 190-24, OPNAVINST 1620.2A, AFI 31-213, MCO 1620.2D and COMDTINST 1620.1E, 27 July 2006, Subject: Armed Forces Disciplinary Control Board and Off-Installation Liaison and Operations.

2. I have decided that the following areas/establishments are "Off-Limits" in accordance with the above cited references:

MEADE VILLAGE, Reece Road, Severn, Maryland (high crime area according to A.A. Co. Police).

ARWELL COURT, (2-block area, formerly Pioneer City, Severn, Maryland (high crime area according to A.A. Co. Police).

LITTLE FALLS AREA, Potomac River, DC/VA (Unsafe area due to rapids).

AROUND THE CLOCK LOCKSMITH, Pasadena, Maryland (unethical business practices).

EXXON GAS STATION, 7898 Ridge Road, Hanover, Maryland (Selling Spice Tobacco).

EXXON GAS STATION, 1318 Annapolis Road, Odenton, Maryland (Selling Spice Tobacco).

3. Arwell Court and Meade Village are off-limits to all military personnel with the exception of those individuals who may currently be bonafide homeowners, renters or guests of homeowners/renters.

IMME-ES

SUBJECT: Off-Limit Areas/Establishments

4. Individuals who desire to file an AFDCB type complaint should present the complaint(s) in writing to the Directorate of Emergency Services, ATTN: President, Armed Forces Disciplinary Control Board, 6619 Mapes Road, Fort George G. Meade, Maryland 20755-5045, or call (301) 677-7681.



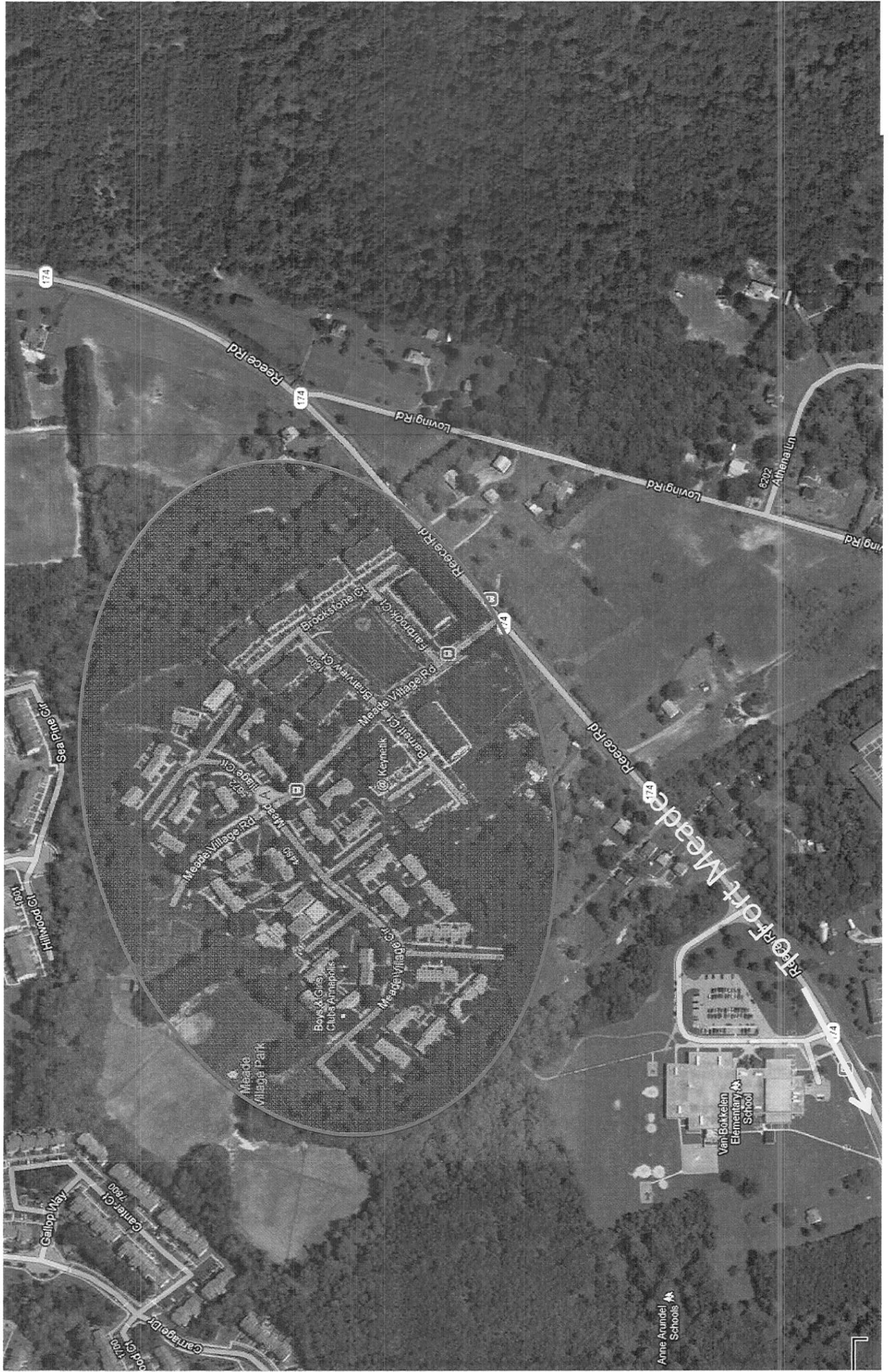
EDWARD C. ROTHSTEIN
Colonel, Military Intelligence
Commanding

DISTRIBUTION:
A, B

Arwell Ct



Meade Village



Exxon Gas Station (7898 Ridge Rd, Hanover, Md)



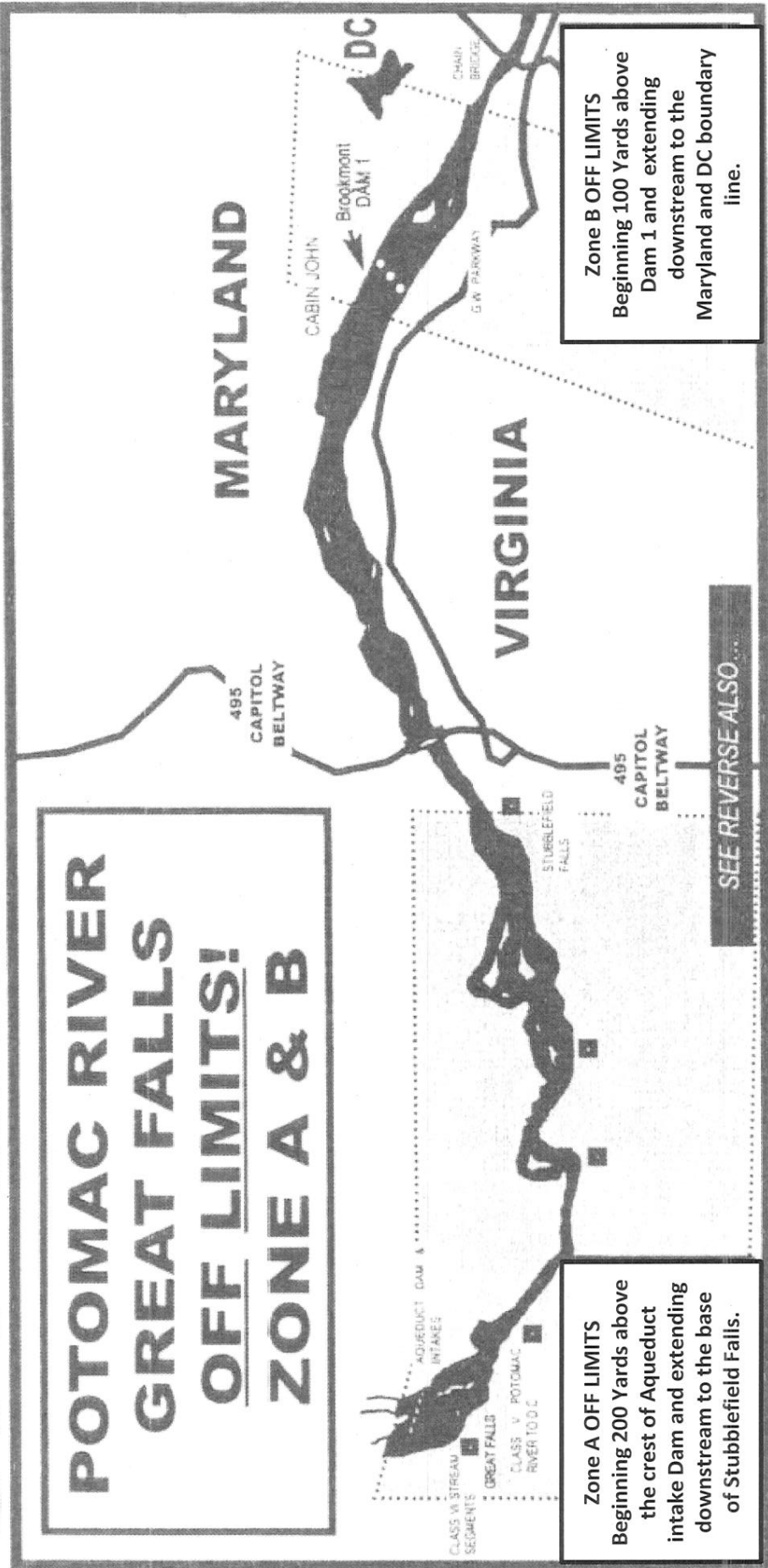
Exxon Gas Station (1318 Annapolis Rd, Odenton, Md)



Potomac River Great Falls Area

OFF LIMITS ZONES!

**POTOMAC RIVER
GREAT FALLS
OFF LIMITS!
ZONE A & B**



Zone A OFF LIMITS
Beginning 200 Yards above
the crest of Aqueeduct
intake Dam and extending
downstream to the base
of Stubblefield Falls.

Zone B OFF LIMITS
Beginning 100 Yards above
Dam 1 and extending
downstream to the
Maryland and DC boundary
line.

SEE REVERSE ALSO