

VBA (*V*isual *B*asic for *A*pplications)

Location of VBA's n:\standards\V8_Resource\X30\Standards\MVBA\

- A_PDFCreates a PDF file of your drawing Automatically
- CFL_PLOT.....Lets you pick the plot driver for different printers
- DELETE_LEVELSDelete selected levels in an Alignment or Cross section
- DTM_DELPOINTSDeletes points under a contour line
- FIXFILE.....Verifies or fixes a V8 dgn file
- NORTHPlaces North Arrow in PNP file rotated to true north
- REFHUBChanges RefHub cell to RH text or RH text to RefHub Cell
- STANDARD.....Sets up views for Standard drawings
- UNLOCK_ELEMENTS ...Unlocks locked elements in drawing file.

One Button PDF Creation

X30 Pentable

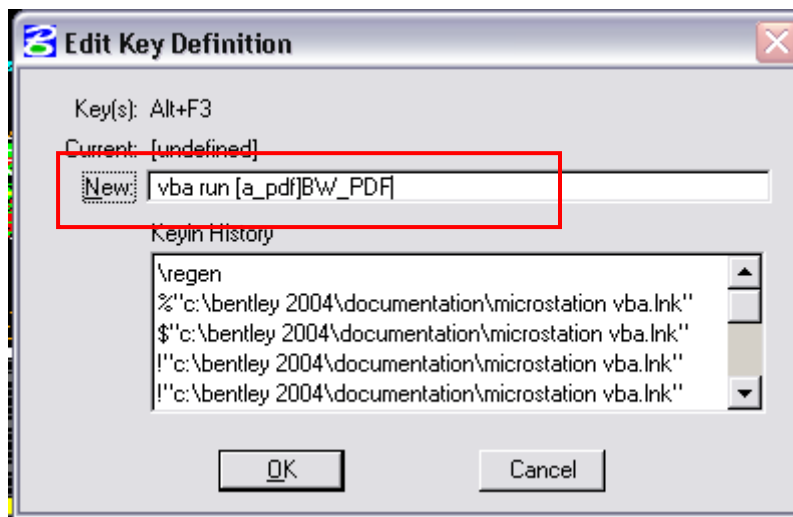
This VBA will create a Color or Black/White PDF file with the current drawing name – in the current file location.

Simply place a fence around the drawing, then run the command.

You can assign the command to a custom toolbox or to a function key

The commands are:

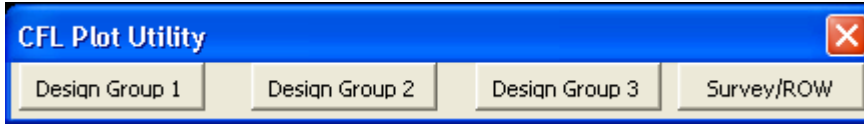
- vba run [A_PDF]BW_PDF
- vba run [A_PDF]Color_PDF



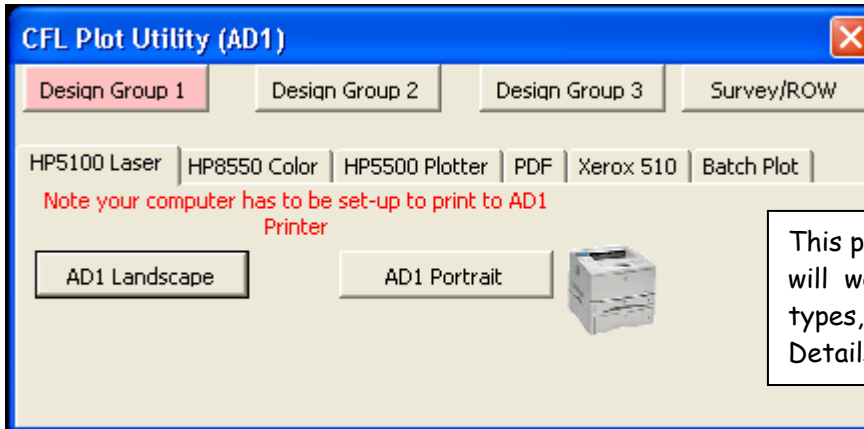
CFL_Plot.mvba

Selects current plot driver for the various printers at CFL

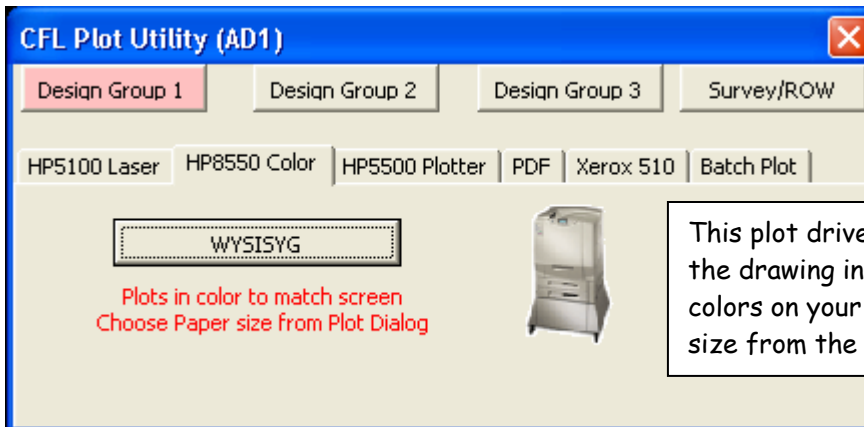
CFL_Plot loads automatically to run the vba type "vba run cflplot"



Choose your "Design Area" The following tabs are the same for all Areas



This plot driver and pen table will work for all drawings types, PNP, Cross Sections, Details, etc.



This plot driver and pen table will plot the drawing in color, that matches the colors on your screen. Choose your paper size from the plot dialog.

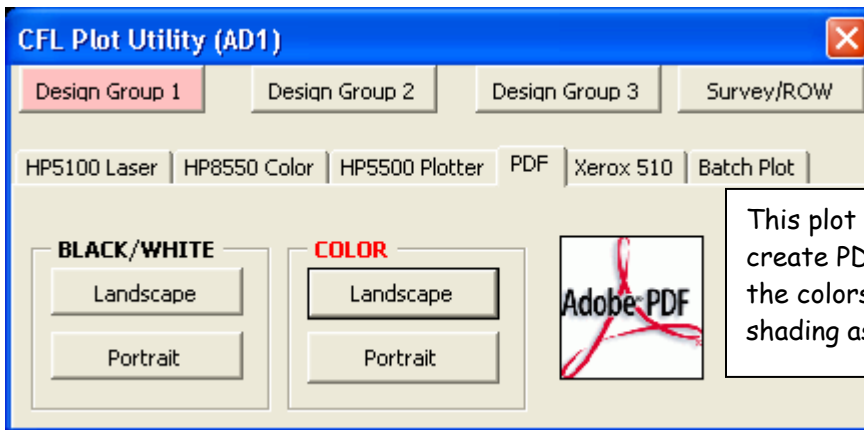


This plot driver and pen table will plot the drawing in color, that matches the colors on your screen or Black with shading as in the HP5100 table.

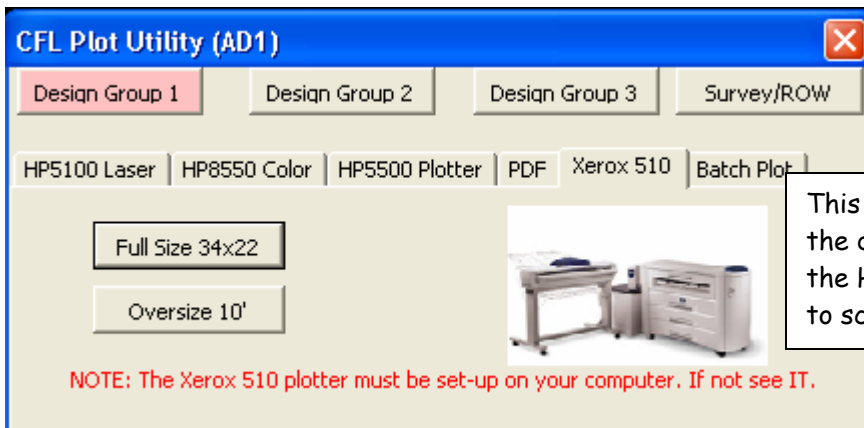
Two options for paper size are available the "D Size" will plot standard CFL drawings to scale. The 10 Foot size will plot drawing up to 10 foot long (For Color Only)

CFL_Plot.mvba

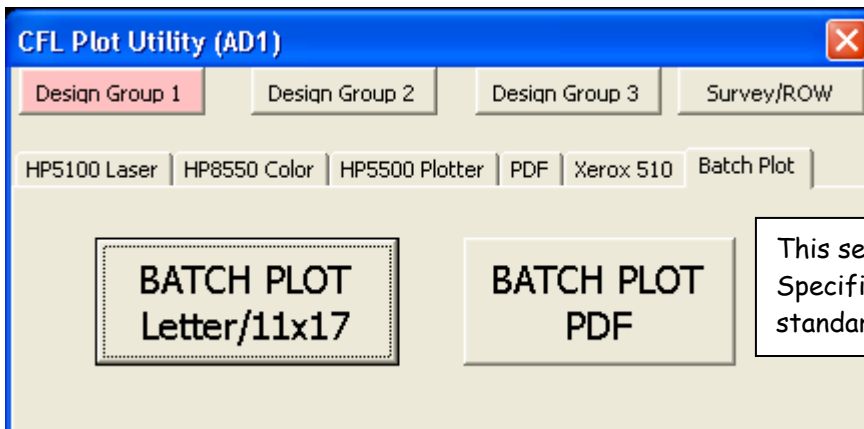
Selects current plot driver for the various printers at CFL



This plot driver and pen table will create PDF files in color, that match the colors on your screen or Black with shading as in the HP5100 table.



This plot driver and pen table will plot the drawing in Black with shading as in the HP5100 table. Sizes CFL drawings to scale or to a max of 10 foot long.

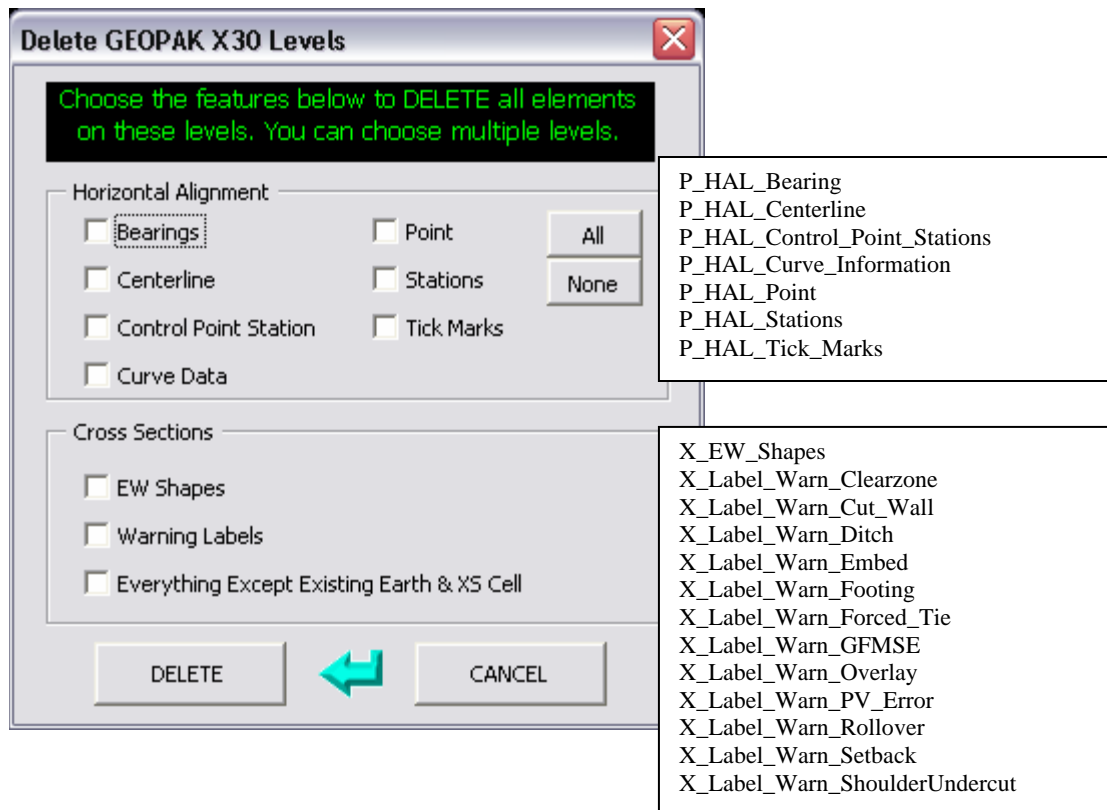
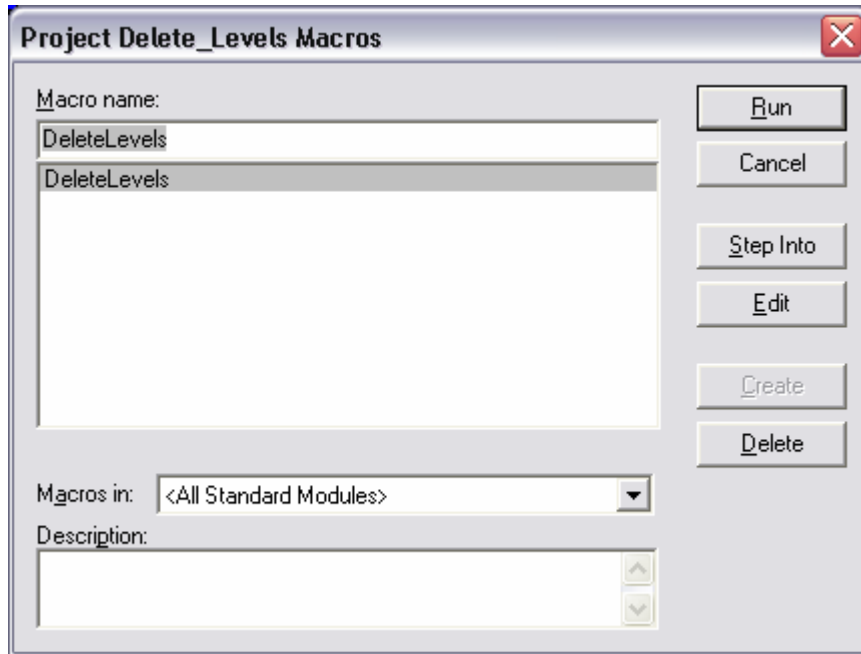


This sets up the Batch Plotting Specification file with parameters for standard plot drivers and plot area.

Delete_Levels.mvba

Delete levels

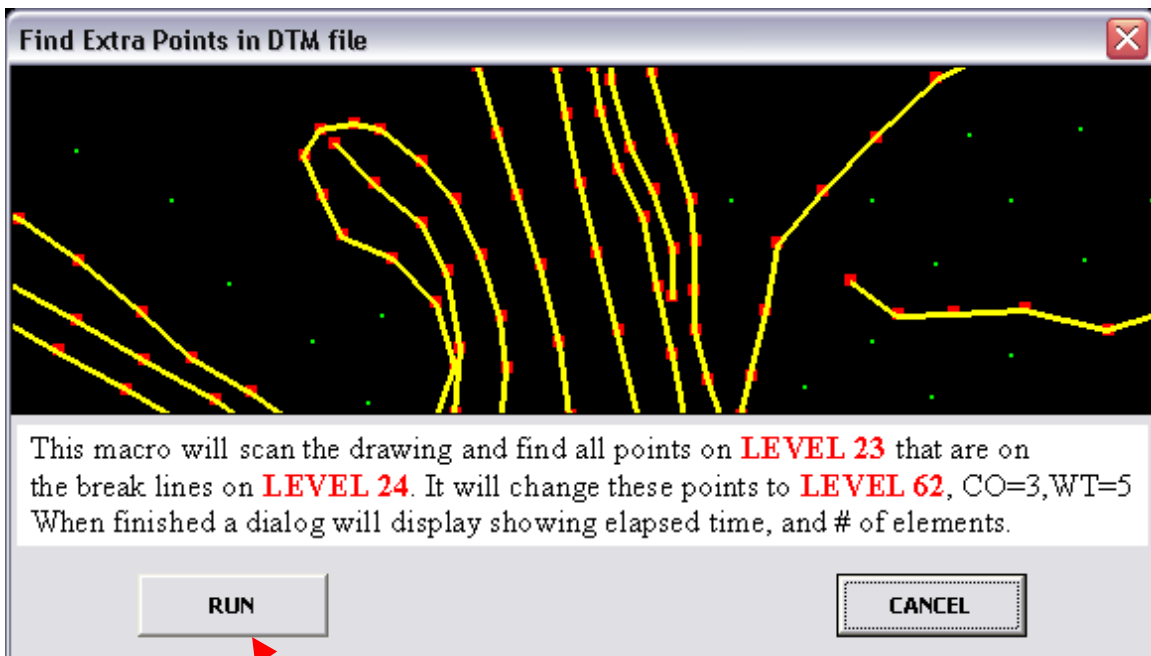
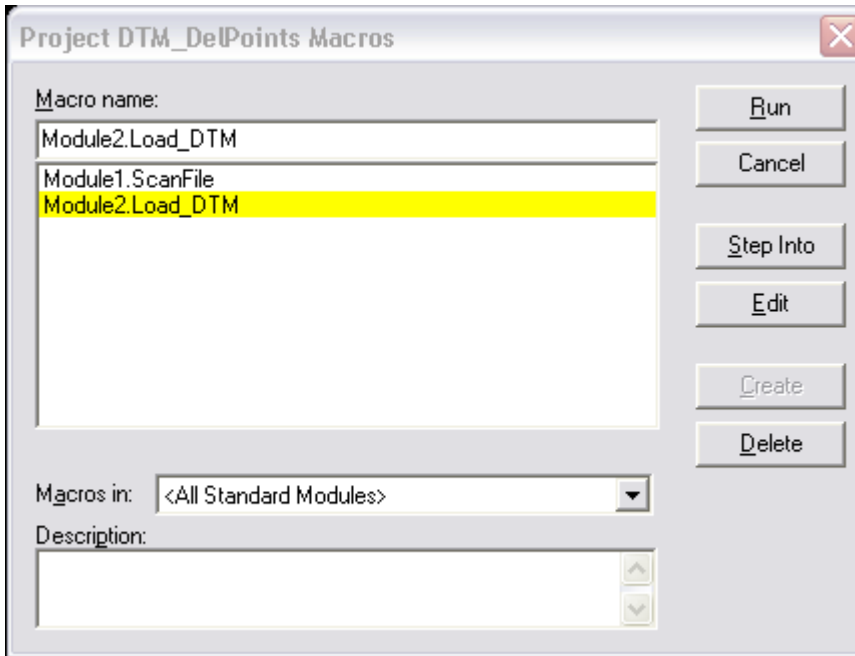
vba run [Delete_Levels]DeleteLevels
or choose from Project Manager Dialog



DTM_DelPoints.mvba

Locates Points on break lines

vba run [DTM_DelPoints]Load_DTM
or choose from Project Manager Dialog

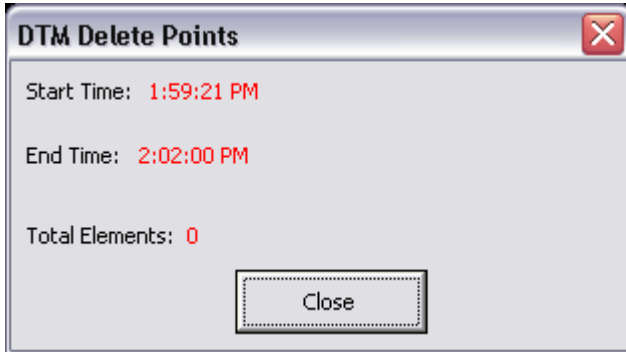


Pick to run

DTM_DelPoints.mvba

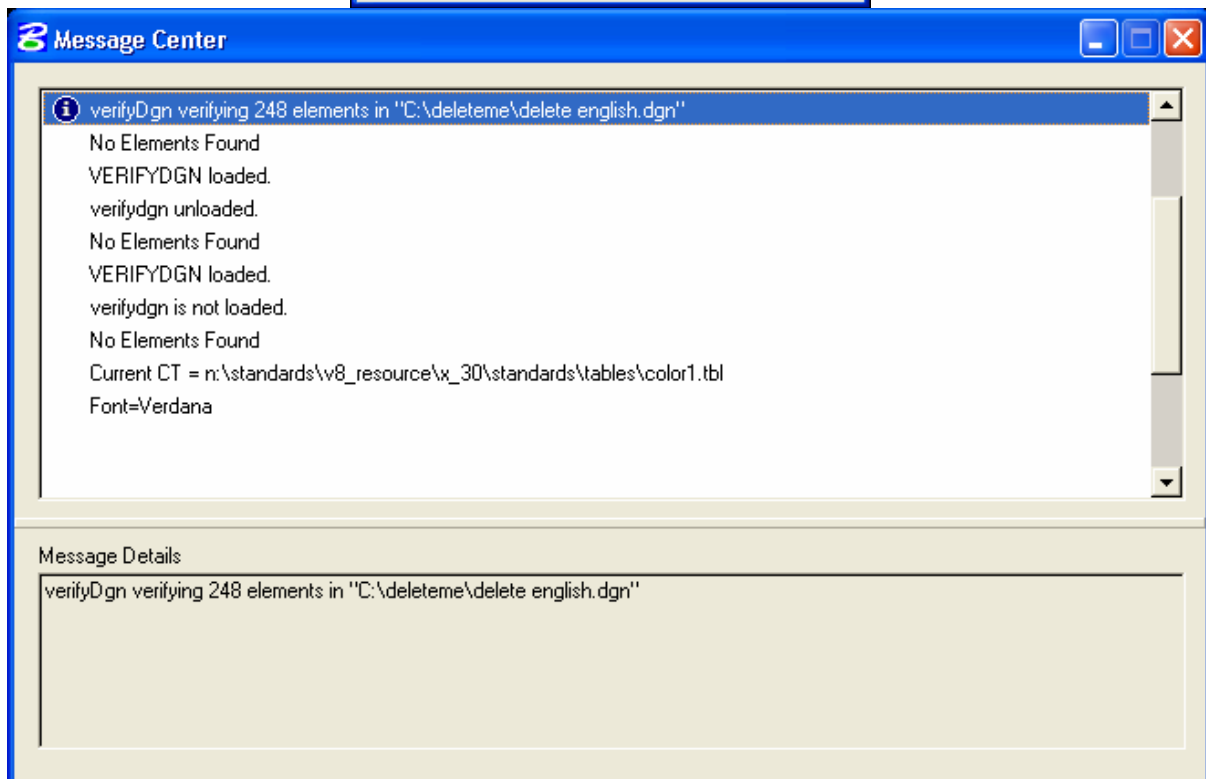
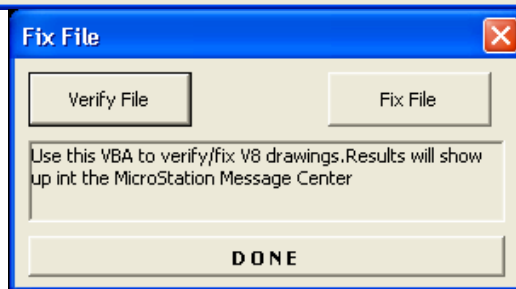
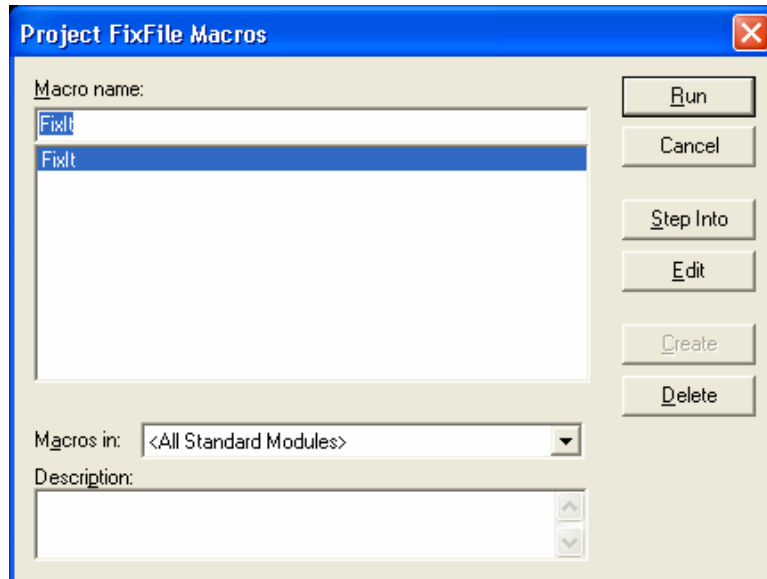
Locates Points on break lines

Macro will take \approx 10 min on a file with 200,000 points. When done the following dialog will be displayed showing elapsed time and the number of elements found under the break lines.



File Fixer

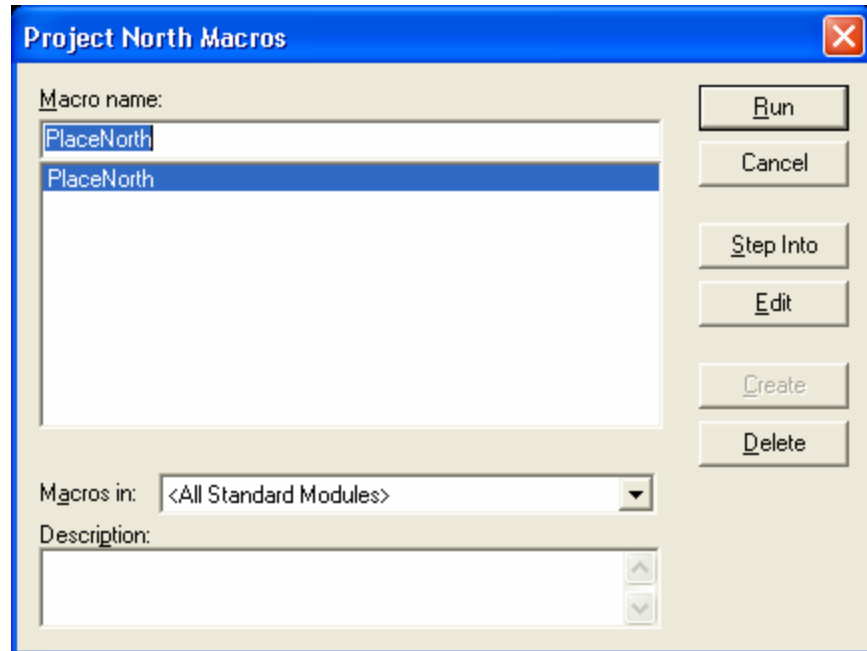
This VBA will, load a MDL program that will verify/repair common problems with V8 dgn files.
vba run [FixFile]FixIt



Place North Arrow in PNP Sheet X30

This VBA will, after selecting the alignment reference file, place the North Arrow rotated to the true north of the alignment file.

vba run [North]PlaceNorth

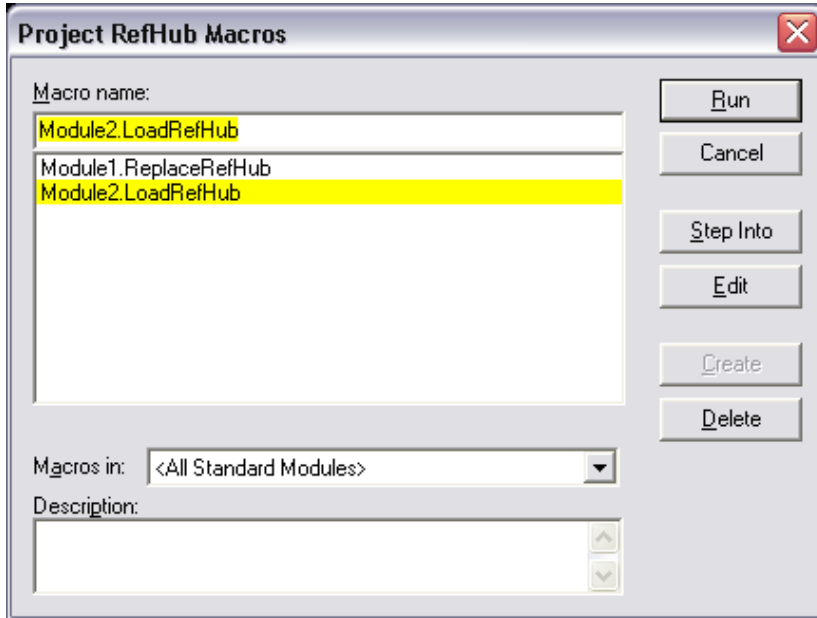


Pick the "Pick Reference" button – choose the reference file to set the rotation, this can be the alignment, the mapping, the contours or any other reference file since they are all rotated to the same degree. The North Arrow then is ready to be placed. You can change the scale of the North Arrow any time before placing.

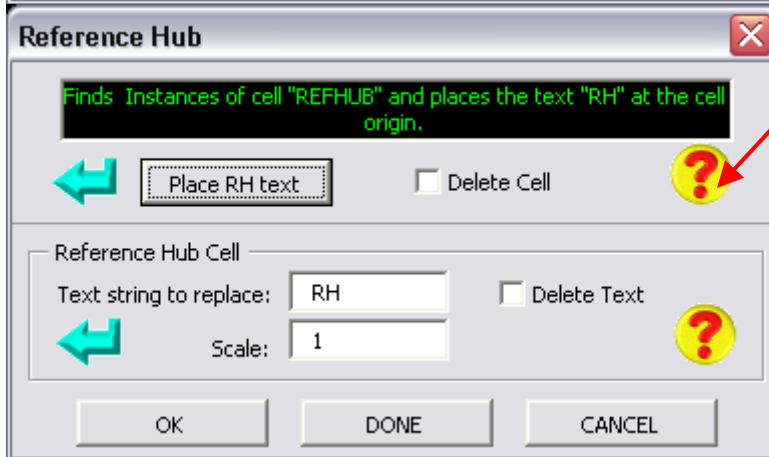
RefHub.mvba

Changes "RH" Text to "REFHUB" Cell or Cell to Text

vba run [RefHub]LoadRefHub
or choose from Project Manager Dialog

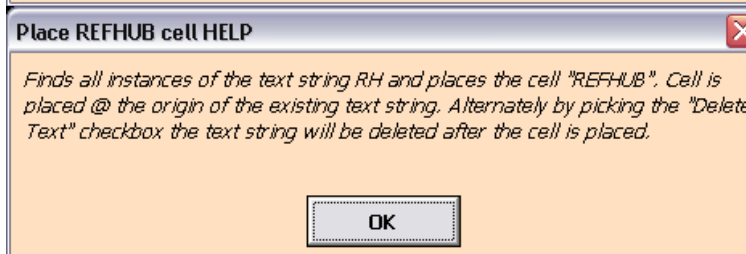
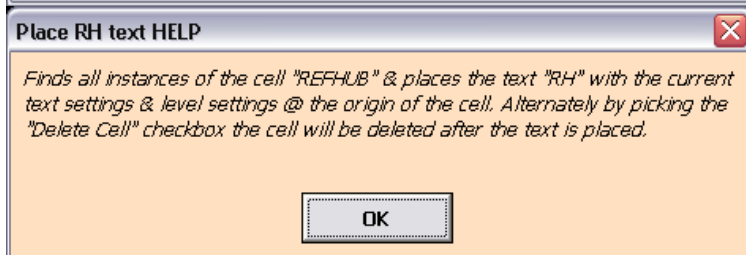


HELP Button



This section finds the cell "REFHUB" and places the text "RH" at the cell origin. Check box to delete the cell.

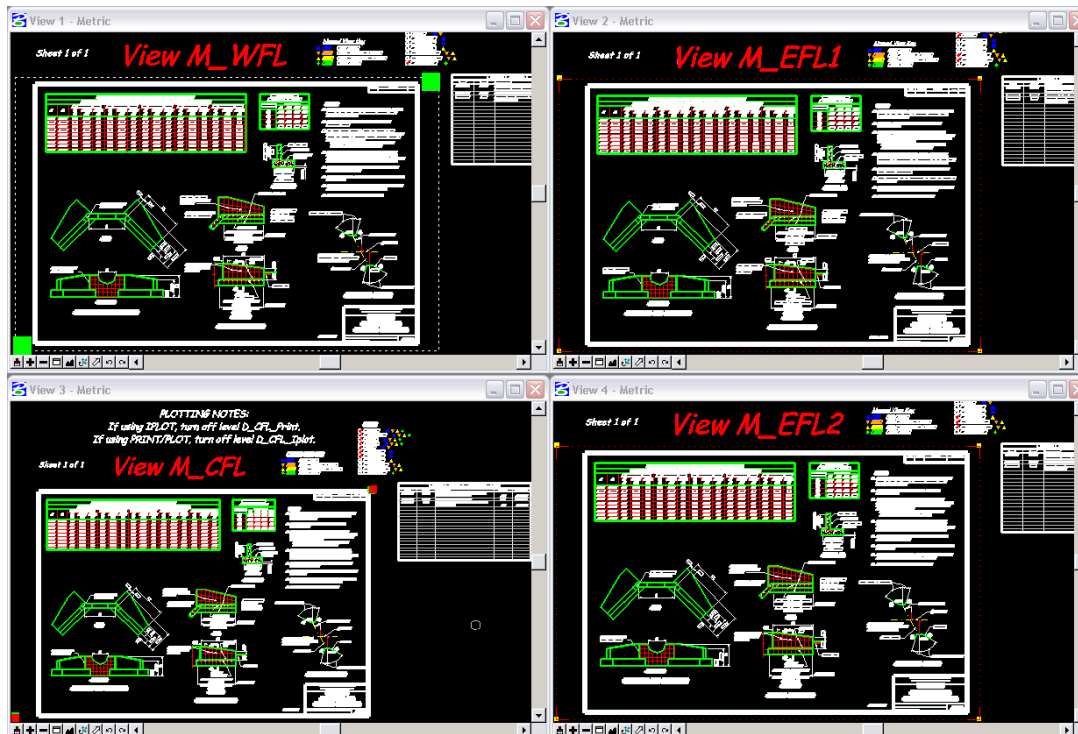
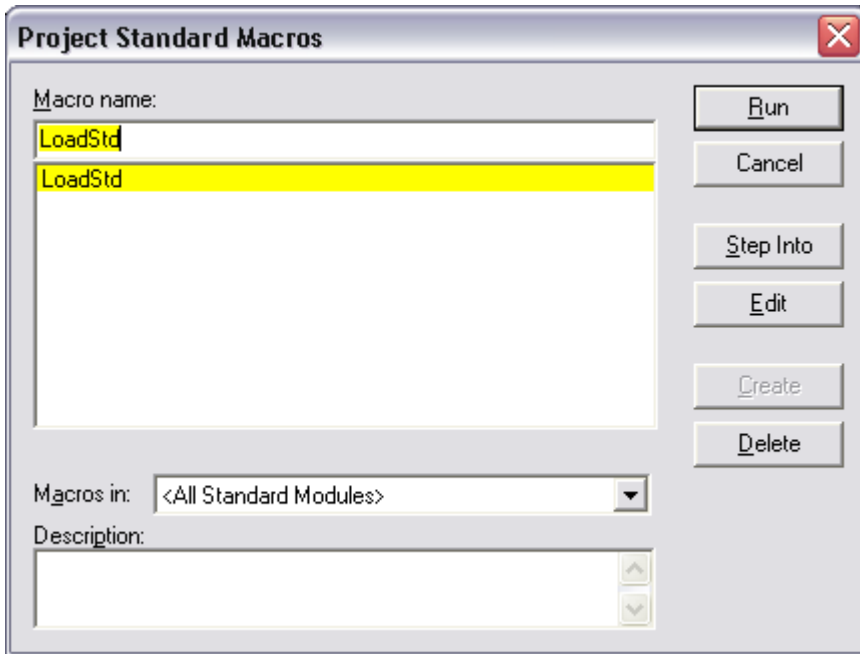
This section finds the text in the textbox and places the cell "REFHUB" at the origin of the text. Check box to delete Text.



Standard.mvba

Sets up views for Standard Drawings

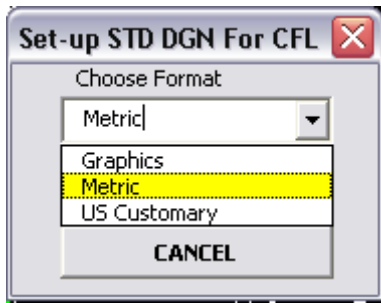
vba run [standard]LoadStd
or choose from Project Manager Dialog



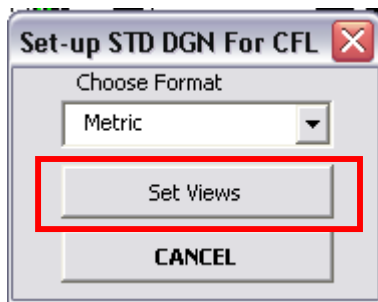
Standard.mvba

Sets up views for Standard Drawings

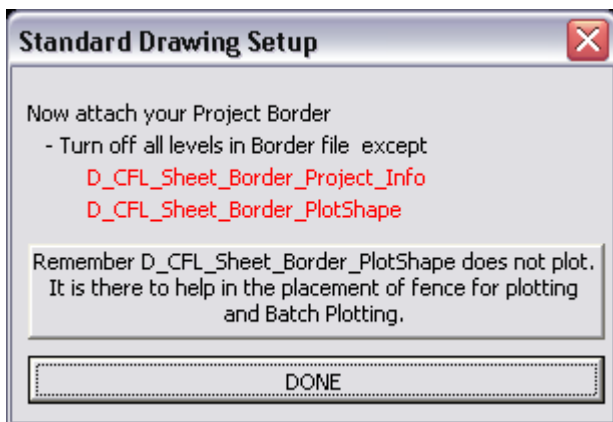
1. Choose format either Metric or US Customary



2. Pick the "Set Views" button to set up view 1 and 5



All views except 1 and 5 will be turned off, correct levels for CFL will be turned on, view 1 will have the whole drawing shown and view 5 will have the border title shown. The following dialog will be shown to remind user of additional processing required.



Unlock Elements

This VBA will, run on a file and unlock any locked elements.
vba run [Unlock_Element]Unlock_Elem

The border cell in the standard drawings has some elements that are locked and the cell can not be deleted. If you need to remove the border cell and replace with your border reference file you can run this vba, then you will be able to delete the border cell.

