



Workflow 1: Attaching CFLHD Color Table

1. From MicroStation select Settings>Color Table...

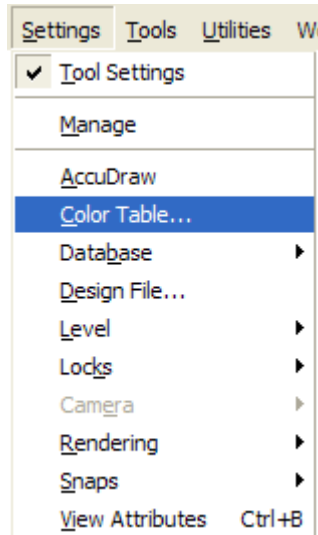


Figure 7-1: Settings Menu

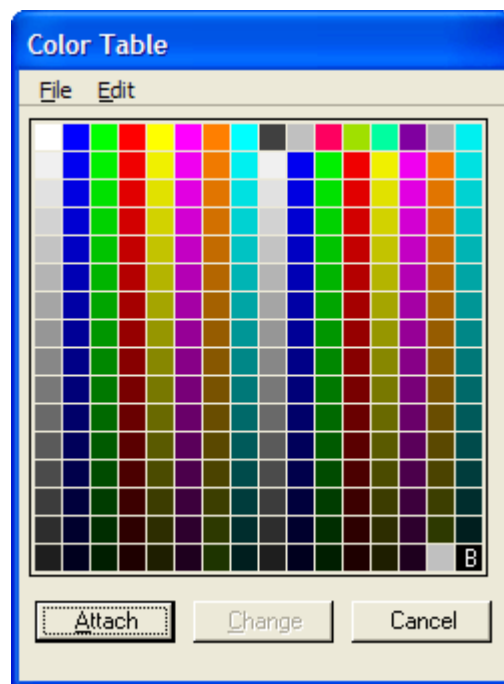


Figure 7-2: Default Color Table

2. This will open the current color table, usually the MicroStation default color table, shown in Figure 7-2. From the color table palette, select File>Open..., and then select the CFLHD color table to be attached.

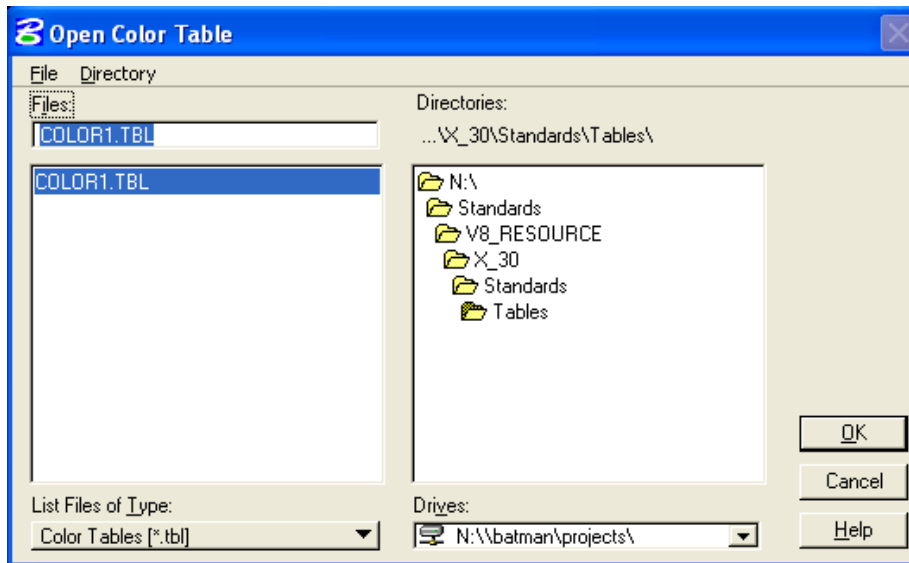


Figure 7-3: Open Color Table

3. Click OK and the CFLHD color table will now be shown.



Figure 7-4: CFLHD Color Table

4. When the correct color table, color1.tbl, is displayed, click on the attach button. The correct color table will now be attached to this drawing.



For CFLHD employees, color tables are automatically attached while opening a design file using the Project Configuration (*.pcf). Contact CADD support to get properly setup if the correct Color Table is not displaying.