



Workflow 1: Resource file setup

1. *Download V8_Resource.zip from the CFLHD web site.*
2. *As this file is specific to CFLHD projects the user should leave this in the V8_Resource\X_30\Standards\Resources directory.*
3. *In MicroStation select Workspace>Configuration.*

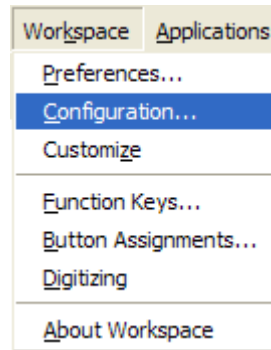


Figure 6-9: Workspace Configuration Menu

4. *From the workspace configuration dialog box, select Symbology from the list on the left.*

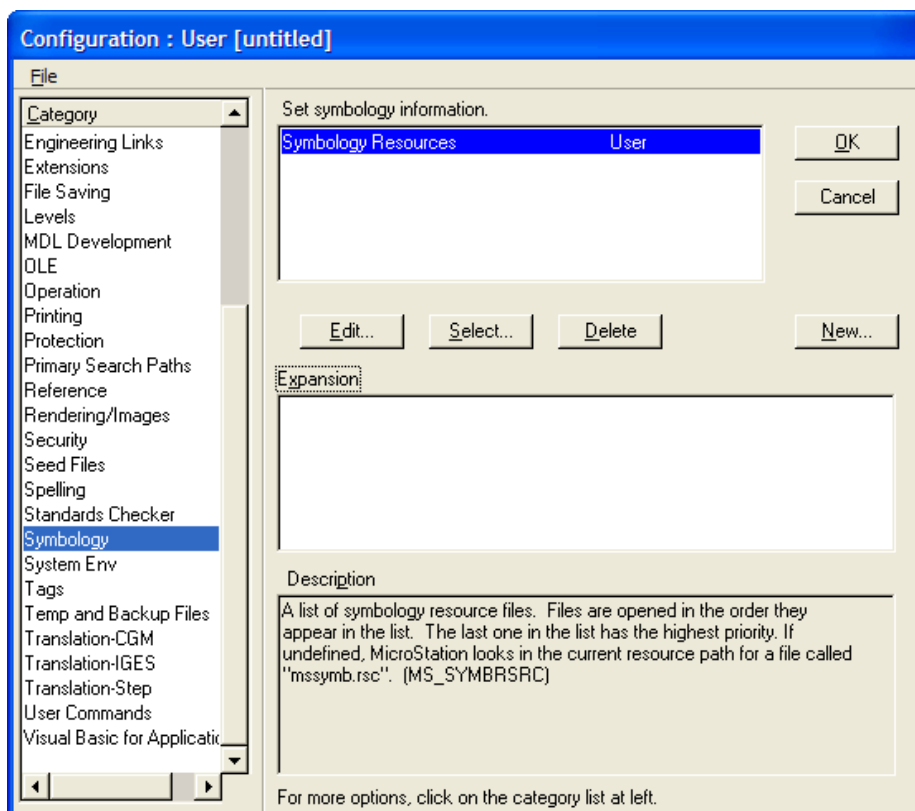


Figure 6-10: Configuration Symbology

5. *Click on the Select button. This will allow the user to select the CFLHD line style resource files downloaded above (step 4).*

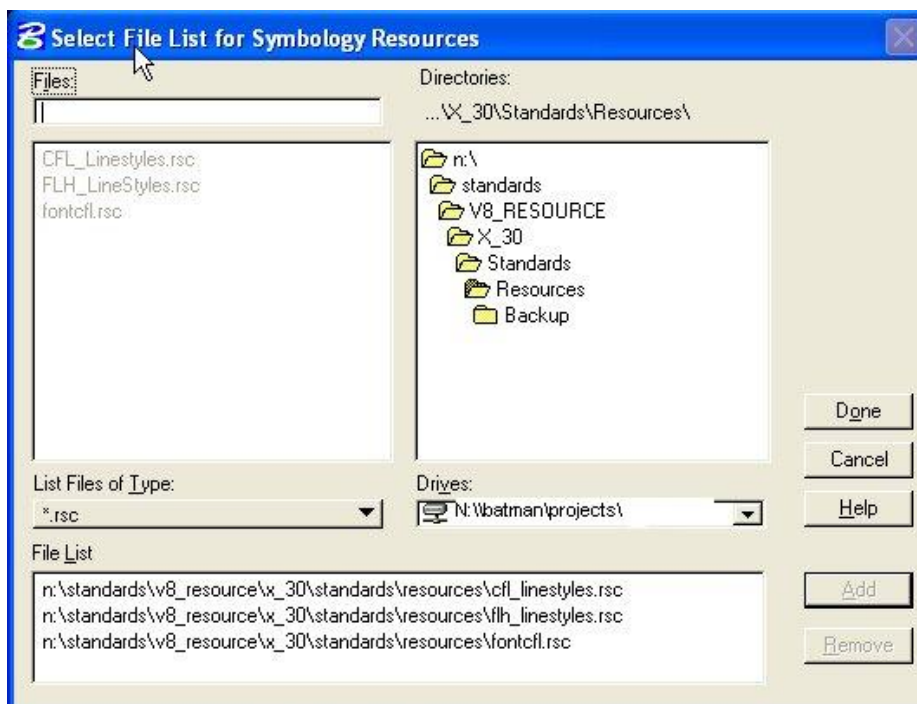


Figure 6-11: Symbology Resources

6. *Pick the path to the directory where the .rsc files are stored from the upper right directory box. Highlight the appropriate file(s) from the upper left box, and then click the Add button to add the desired file to the file list. Repeat this procedure for each file to be added.*
7. *Click the Done button.*
8. *The files will now be shown in the Expansion window of the user configuration box.*

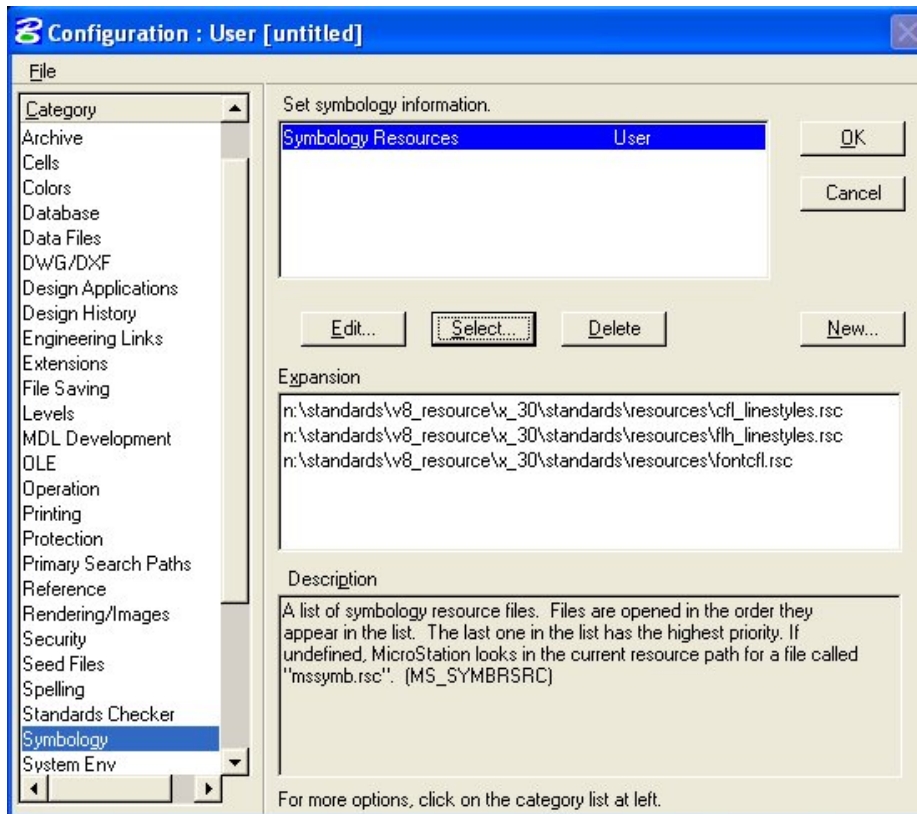


Figure 6-12: User Configuration Symbology

9. *Click the OK button. The user will see a MicroStation alert dialog box asking if changes to the configuration file should be saved, Answer by selecting the Yes button. The correct custom line styles will now be available.*

Workflow 1 will allow user level configuration, which is not the recommended method for the X30 standard files.



Workflow 1 – Resource file setup is for information only. CFLHD designers should not manually attach or edit configuration variables. For CFLHD, the CADD Coordinator sets the configuration variables.



If using IPlot as the plotting solution, the user will also need to copy the custom line style resource files to the IPlot server in order for custom line styles to show up correctly on plots.