



Workflow 1: Attaching the Correct .smd File

1. From the User Preference dialog shown on Figure 2-2, select the Feature Preferences button.
2. The Feature Preferences dialog will activate, showing the currently attached .smd file.

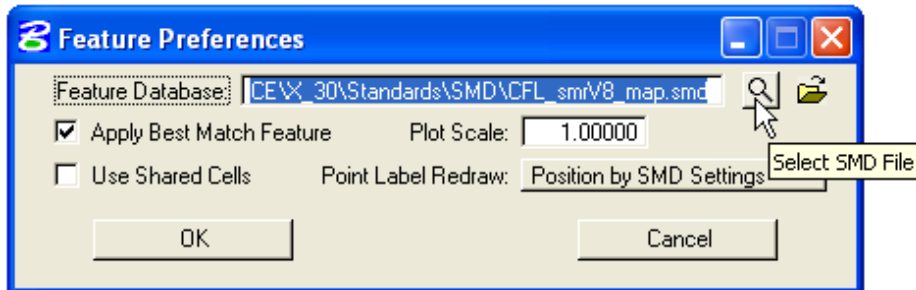


Figure 2-3: Feature Preferences

3. The CFLHD standard .smd file to use with the .x30 criteria is CFL_smrV8_map.smd. Press the Select SMD File button and browse to the location of the CFLHD .smd file.
4. Check the Apply Best Match Feature box and set the Plot Scale field to 1.00



CFLHD .smd file is automatically attached when entering MicroStation using the project configuration file (*.pcf).