

# Maine Potatoes 2012 Crop Acreage, Yield, Size, and Grade

Released January 15, 2013

United States Department of Agriculture  
National Agricultural Statistics Service  
New England Field Office



NEW ENGLAND  
Agricultural  
Statistics



53 Pleasant Street  
Room 2100  
Concord, NH 03301

Gary R. Keough, Director

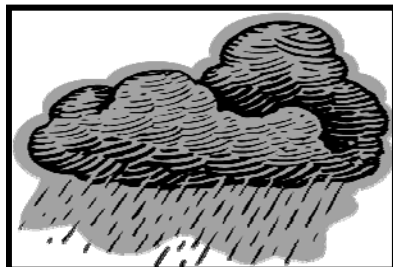
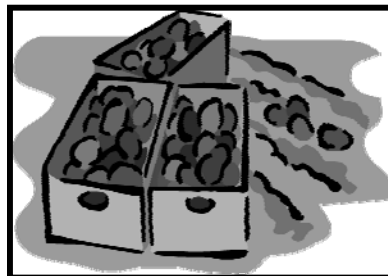
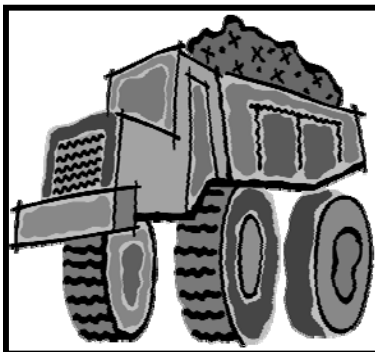
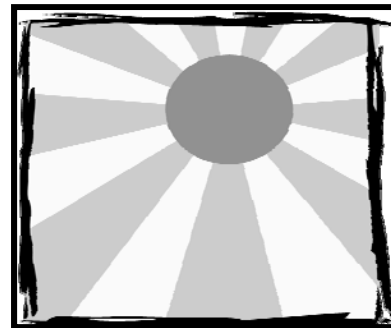
Phone: 603-224-9639

Fax: 603-225-1434

[www.nass.usda.gov/nh](http://www.nass.usda.gov/nh)

[nass-nh@nass.usda.gov](mailto:nass-nh@nass.usda.gov)

*A special "THANK YOU" goes to Maine growers who have helped us by participating in the Potato Objective Yield Survey. The study estimates yield, size and grade from randomly selected hills that are dug just before harvest.*



This report is funded through a cooperative agreement with the Maine Department of Agriculture as a service to growers and others in the industry. It is published annually and is available on the Internet in mid-January.

## TABLE OF CONTENTS

Table Name	Table Number	Page
Acres, Yield, and Production (Maine only) .....	1	4
Percent of Acres Planted by Variety and Type.....	2	4
Number of Tubers per Hill and Hills per Acre, by Type:		
Round Whites, Long Whites, All Whites .....	3A	5
Reds, Whites, Yellows, Russets, All Varieties.....	3B	5
Percent of Net Yield within Size Groups:		
Reds and Yellows .....	4A	5
Round Whites .....	4B	5
Russets.....	4C	6
Percent of Net Yield by Grade, by Type:		
Reds and Yellows.....	5A	6
Round Whites and Russets .....	5B	6
Harvest Loss within Size Groups:		
Round Whites .....	6A	6
Russets.....	6B	7
Planting Progress .....	7	7
Production and Stocks.....	8	7
Prices Received.....	9	7
Acres, Yield, and Production of Fall Potatoes (United States).....	10	8



### ACCESS TO REPORTS

For your convenience, there are several ways to obtain NASS reports, data products, and services:

#### INTERNET ACCESS

All NASS reports are available free of charge on the worldwide Internet. For access, connect to the Internet and go to the NASS Home Page at: [www.nass.usda.gov](http://www.nass.usda.gov).

#### E-MAIL SUBSCRIPTION

All national reports and state newsletters are available on the Internet at: <http://www.nass.usda.gov/>. These reports are also available by subscription free of charge direct to your e-mail address. Starting with the NASS home page at <http://www.nass.usda.gov> locate the syndication section at the bottom of the right hand column, under receive reports by e-mail, click national or state, then follow the instructions on the screen.

#### PRINTED REPORTS OR DATA PRODUCTS CALL OUR TOLL-FREE ORDER DESK

800-999-6779 (U.S. and Canada) Other areas, please call 703-605-6220 FAX: 703-605-6900

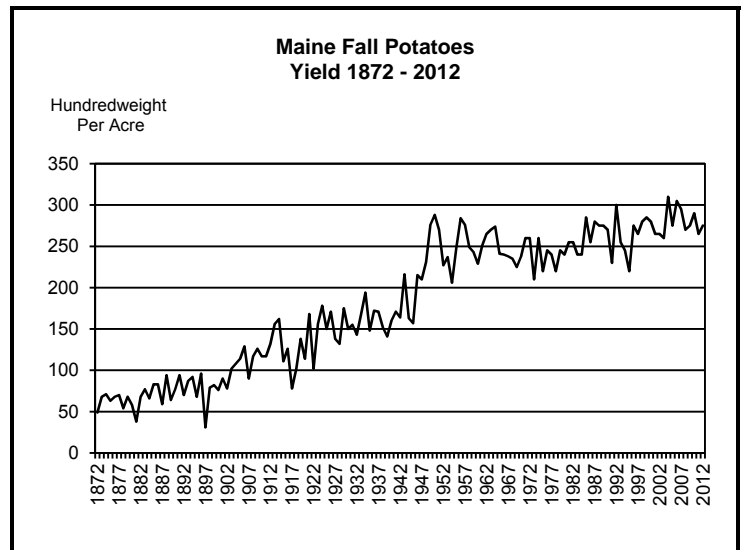
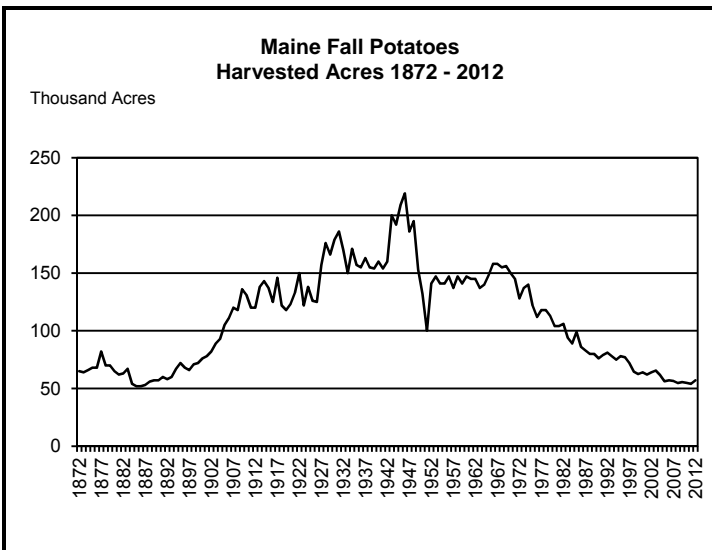
## Maine Potatoes Acreage, Yield, Size, and Grade, 2012 Crop

**FORWARD:**

We are pleased to present the Maine Acreage, Yield, Size, and Grade Report for the 2012 potato crop. Data contained in this report are based on the results of the Potato Objective Yield Survey, a project conducted annually since 1968. The National Potato Objective Yield Survey encompasses seven of the major fall potato producing states (Idaho, Maine, Minnesota, North Dakota, Oregon, Washington and Wisconsin) that grew 84 percent of the United States fall potato crop in 2012.

The 2012 Potato Objective Yield Survey in Maine consisted of 210 “samples” chosen by systematic random sampling. Each sample consisted of two independently located units. Within each unit, hill counts were made along a 20-foot length of the row, width of the row was measured, and three hills were harvested. Thus, tubers were harvested from six hills of potatoes for each sample. These potatoes were graded, sized, and weighed using strict laboratory procedures. After harvest, enumerators returned to one-fourth of the sample fields to obtain an objective indication of harvest loss. Tubers were collected from two units, each unit covering a three foot by six foot area, and sent to the lab for weighing.

The success of this project must be credited to the cooperation of many potato growers across the State of Maine. We sincerely appreciate their time and efforts in supplying crop information, and granting permission for field entry and sample diggings. The 2012 Maine Potato Objective Yield Survey was under the leadership of Statistician Dianne Johnson. Data collection was supervised by NASDA field supervisors Marcia Gartley and Julie Kosch. NASDA field enumerators included Keith Boulter, Christopher Cashman, Brittany Hickey, Keith Watson, Audrey Zimmerman, Valerie Harris, Robert Seltsam and Derek Smith. Lab supervision was under the direction of Nancy Wright. Robin Helrich was responsible for setting the estimates of acreage, yield, production, prices, and stocks. We would also like to recognize Lynne Arsenault and Deirdre Davis, for their assistance in preparing this publication.



**Table 1: MAINE POTATOES: Acres, Yield and Production, 2007 – 2012**

Year	Area		Yield per Acre	Production
	Planted	Harvested		
	Acres		Cwt	1,000 Cwt
2007	57,100	56,500	295	16,668
2008	56,000	54,700	270	14,769
2009	56,000	55,500	275	15,263
2010	55,000	54,800	290	15,892
2011	57,000	54,000	265	14,310
2012	57,500	57,000	275	15,675

SOURCE: *Crop Production – Annual*, January 11, 2013, National Agricultural Statistics Service, USDA.**Table 2: MAINE POTATOES: Percent of Acres Planted by Variety and Type, 2007 – 2012**

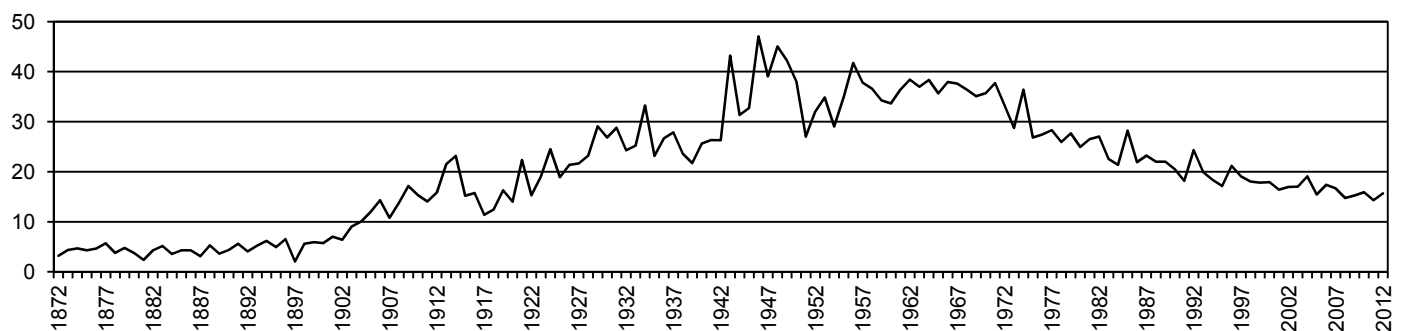
Variety and Type	2007	2008	2009	2010	2011	2012
	Percent					
<b>By Variety:</b>						
Russet Burbank	39.1	42.6	41.5	38.0	43.1	42.7
Frito-Lay	18.9	13.8	11.1	15.6	12.5	11.5
R Norkotah	2.6	4.2	5.1	3.5	4.9	5.9
Superior	5.0	3.5	4.9	3.8	4.1	5.1
Snowden	3.8	*	1.4	5.8	5.5	4.7
Goldrush	2.8	3.7	2.7	1.9	2.6	3.4
Norland	2.6	4.0	3.6	1.6	3.9	3.4
Blazer R	(NA)	(NA)	(NA)	*	1.9	3.0
Innovator	(NA)	(NA)	(NA)	2.0	2.0	2.9
Ontario	2.0	2.6	1.5	*	1.1	1.7
Norwis	1.8	3.6	1.2	1.2	*	1.5
Atlantic	2.0	1.4	3.0	2.8	1.3	1.4
Shepody	4.6	4.6	3.9	5.2	4.1	1.4
Yukon Gold	3.3	3.7	4.3	2.8	2.2	1.3
Keuka Gold	*	*	*	1.3	*	1.0
Katahdin	2.8	2.4	2.7	1.6	1.1	1.0
Kennebec	*	*	*	1.0	*	*
Marcy	*	*	*	1.3	*	*
Monona	1.9	*	2.1	*	1.1	*
Reba	1.5	2.2	2.0	2.1	2.7	*
Red La Soda	*	1.0	*	*	(NA)	*
Other Varieties	5.3	6.7	9.0	8.5	5.9	8.1
<b>Total</b>	<b>100.0</b>	<b>100.0</b>	<b>100.0</b>	<b>100.0</b>	<b>100.0</b>	<b>100.0</b>
<b>By Type:</b>						
Russets	45.0	52.0	51.0	51.0	54.0	
Whites (Long and Round)	46.0	35.0	35.0	40.0	38.0	
Yellows	5.0	8.0	8.0	5.0	4.0	
Reds	4.0	5.0	6.0	4.0	4.0	
<b>Total</b>	<b>100.0</b>	<b>100.0</b>	<b>100.0</b>	<b>100.0</b>	<b>100.0</b>	

\* Included with other varieties.

(NA) Not available.

SOURCE: *Crop Production*, December 11, 2012, National Agricultural Statistics Service, USDA.**Maine Fall Potatoes  
Production 1872 – 2012**

Million Hundredweight



**Table 3A: MAINE POTATOES: Number of Tubers per Hill and Hills per Acre, by Type, 2007 – 2012 <sup>1</sup>**

Year	Round Whites		Long Whites <sup>2</sup>		All Whites	
	Tubers per Hill	Hills per Acre	Tubers per Hill	Hills per Acre	Tubers per Hill	Hills per Acre
	Number					
2007	7.1	13,290	7.5	11,943	7.2	13,098
2008	6.7	12,796	5.0	11,784	6.5	12,655
2009	7.7	14,061	—	—	7.6	13,807
2010	7.4	13,595	—	—	7.3	13,597
2011	6.9	12,801	—	—	6.7	13,015
2012	7.6	11,746	—	—	7.5	11,810

<sup>1</sup> Tubers 1½ inches and over.

<sup>2</sup> Unavailable after 2008; too few reports to allow publication.

**Table 3B: MAINE POTATOES: Number of Tubers per Hill and Hills per Acre, by Type, 2007 – 2012 <sup>1</sup>**

Year	Reds		All Whites		Yellows		Russets		All Varieties	
	Tubers per Hill	Hills per Acre	Tubers per Hill	Hills per Acre	Tubers per Hill	Hills per Acre	Tubers per Hill	Hills per Acre	Tubers per Hill	Hills per Acre
	Number									
2007	8.1	12,874	7.2	13,098	6.6	13,418	11.0	9,629	8.9	11,519
2008	7.2	13,785	6.5	12,655	9.0	13,228	10.2	9,603	8.6	11,210
2009	7.6	14,873	7.6	13,807	6.1	15,617	10.7	9,638	9.1	11,810
2010	6.9	16,275	7.3	13,597	9.2	13,327	9.6	9,964	8.4	12,054
2011	7.2	13,687	6.7	13,015	6.8	14,268	8.7	9,809	7.9	11,303
2012	8.2	12,589	7.5	11,810	8.9	11,471	9.0	9,669	8.5	10,498

<sup>1</sup> Tubers 1½ inches and over.

**Table 4A: MAINE POTATOES: Percent of Net Yield by Size Groups  
Reds and Yellows, 2007 – 2012 <sup>1</sup>**

Size	Reds						Yellows					
	2007	2008	2009	2010	2011	2012 <sup>2</sup>	2007	2008	2009	2010	2011 <sup>2</sup>	2012
	Percent											
1 ½" – under 1 ⅞"	6	1	3	0	6	—	1	1	*	6	—	1
1 ⅞" – under 2"	7	2	2	2	4	—	3	2	2	5	—	11
2" – under 2 ¼"	16	16	23	18	11	—	8	10	13	21	—	9
2 ¼" – under 2 ½"	28	27	25	34	25	—	13	15	14	23	—	15
2 ½" – under 3 ½"	43	54	46	46	53	—	65	69	70	43	—	61
3 ½" – under 4"	—	*	1	0	1	—	10	2	1	1	—	2
4" and over	0	0	*	0	0	—	*	1	*	1	—	1
	Number											
Number of Samples	6	6	6	5	10	4	11	9	9	7	3	6

\* Less than 1 percent.

<sup>1</sup> Percent of net yield adjusted for field loss.

<sup>2</sup> Unavailable; too few reports to allow publication.

**Table 4B: MAINE POTATOES: Percent of Net Yield by Size Groups  
Round Whites, 2007 – 2012 <sup>1</sup>**

Size	Round Whites					
	2007	2008	2009	2010	2011	2012
	Percent					
1 ½" – under 1 ⅞"	0.9	0.5	3.7	4.2	1.2	4.4
1 ⅞" – under 2"	1.3	4.1	5.3	5.7	2.2	3.4
2" – under 2 ¼"	10.5	11.9	13.1	13.2	10.2	12.2
2 ¼" – under 2 ½"	20.8	19.7	20.3	20.1	16.6	20.8
2 ½" – under 3 ½"	60.7	59.6	53.8	52.5	63.0	51.5
3 ½" – under 4"	4.9	3.0	2.6	3.0	6.5	6.7
4" and over	0.9	1.2	1.2	1.3	0.3	1.0
	Number					
Number of Samples	54	43	36	47	41	38

\* Less than 1 percent.

<sup>1</sup> Percent of net yield adjusted for field loss.

**Table 4C: MAINE POTATOES: Percent of Net Yield by Weight within Size Groups Russets, 2007 – 2012<sup>1</sup>**

Size	Russets					
	2007	2008	2009	2010	2011	2012
	Percent					
1 ½" – under 1 ⅞"	7	6	7	6	3	0
1 ⅞" – under 2"	6	7	7	7	5	5
2" and over:						
4 oz – under 6 oz <sup>2</sup>	33	35	41	33	35	38
6 oz – under 8 oz	20	20	20	20	22	21
8 oz – under 10 oz	14	12	11	14	16	14
10 oz and over:						
10 oz – under 12 oz	8	7	5	8	8	9
12 oz – under 14 oz	5	5	4	4	4	6
14 oz and over	7	8	5	8	7	7
	Number					
Number of Samples	68	69	61	52	72	82

<sup>1</sup> Percent of net yield adjusted for field loss.<sup>2</sup> Includes potatoes 2 inches or greater weighing less than 4 ounces.**Table 5A: MAINE POTATOES: Percent of Net Yield by Grade, by Type, Reds and Yellows, 2007 – 2012<sup>1</sup>**

Grade	Reds						Yellows					
	2007	2008	2009	2010	2011	2012 <sup>2</sup>	2007	2008	2009	2010	2011 <sup>2</sup>	2012
	Percent											
No. 1 (2 Inch Minimum) <sup>3</sup>	80	87	82	90	75	—	82	82	82	79	—	74
No. 2 or Processing Usable (1 ½ Inch Minimum) <sup>4</sup>	17	9	9	4	12	—	12	10	10	13	—	13
Cull <sup>5</sup>	3	4	9	6	13	—	6	8	8	8	—	13

<sup>1</sup> Percent of net yield – adjusted for field loss. Reflects condition before harvest or handling damage.<sup>2</sup> Unavailable, too few reports to allow publication.<sup>3</sup> Potatoes which meet the requirements for US #1, as stated in U.S. Standards for Grades of Potatoes, USDA, Agriculture Marketing Service.<sup>4</sup> Potatoes which meet the requirements for US #2, as stated in U.S. Standards for Grades of Potatoes, USDA, Agriculture Marketing Service.<sup>5</sup> Potatoes not meeting the requirements for US #1 or US #2, as stated in U.S. Standards for Grades of Potatoes, USDA, Agriculture Marketing Service.**Table 5B: MAINE POTATOES: Percent of Net Yield by Grade, by Type, Round Whites and Russets, 2007 – 2012<sup>1</sup>**

Grade	Round Whites						Russets					
	2007	2008	2009	2010	2011	2012	2007	2008	2009	2010	2011	2012
	Percent											
No. 1 (2 Inch Minimum) <sup>2</sup>	89.1	76.3	72.9	70.2	80.7	83.5	70	66	72	69	67	83
No. 2 or Processing Usable (1 ½ Inch Minimum) <sup>3</sup>	8.7	12.0	15.7	15.3	5.4	7.6	18	20	19	21	14	7
Cull <sup>4</sup>	2.2	11.7	11.4	14.5	13.9	8.9	12	14	9	10	19	10

<sup>1</sup> Percent of net yield – adjusted for field loss. Reflects condition before harvest or handling damage.<sup>2</sup> Potatoes which meet the requirements for US #1, as stated in U.S. Standards for Grades of Potatoes, USDA, Agriculture Marketing Service.<sup>3</sup> Potatoes which meet the requirements for US #2, as stated in U.S. Standards for Grades of Potatoes, USDA, Agriculture Marketing Service.<sup>4</sup> Potatoes not meeting the requirements for US #1 or US #2, as stated in U.S. Standards for Grades of Potatoes, USDA, Agriculture Marketing Service.**Table 6A: MAINE POTATOES: Harvest Loss by Size Group, Round Whites, 2007 – 2012<sup>1</sup>**

Size	2007	2008	2009	2010	2011	2012
	Cwt per Acre					
1 ½" – under 1 ⅞"	4	6	7	5	6	4
1 ⅞" – under 2"	3	2	2	3	5	3
2" – under 2 ¼"	2	4	6	6	6	4
2 ¼" – under 2 ½"	1	3	3	6	6	4
2 ½" – under 3 ½"	3	7	5	5	7	11
3 ½" – under 4"	0	1	*	2	0	0
4" and over	0	0	0	0	0	0
<b>Total</b>	<b>13</b>	<b>23</b>	<b>23</b>	<b>27</b>	<b>30</b>	<b>26</b>

<sup>1</sup> Includes United States No. 1, United States No. 2, and Culls.

**Table 6B: MAINE POTATOES: Harvest Loss by Weight Within Size Groups, Russets, 2007 – 2012 <sup>1</sup>**

Size	2007	2008	2009	2010	2011	2012
Cwt per Acre						
1 ½" – under 1 ¾"	5	10	11	15	15	*
1 ¾" – under 2"	2	2	3	4	4	9
2" and over:						
4 oz – under 6 oz <sup>2</sup>	2	5	5	12	7	10
6 oz – under 8 oz	2	1	1	4	2	2
8 oz – under 10 oz	2	2	1	2	*	1
10 oz and over	*	0	2	1	2	2
<b>Total</b>	<b>13</b>	<b>20</b>	<b>23</b>	<b>38</b>	<b>30</b>	<b>24</b>

\* Less than 0.5 cwt per acre.

<sup>1</sup> Includes United States No. 1, United States No. 2, and Culls.

<sup>2</sup> Includes potatoes 2 inches or greater weighing less than 4 ounces.

**Table 7: MAINE POTATOES: Planting Progress, 2007 – 2012**

Week Ending	Percent of Acres Planted Weekly						Accumulated Percent of Acres					
	2007	2008	2009	2010	2011	2012	2007	2008	2009	2010	2011	2012
Percent												
Before May 1	0	0	2	10	0	2	0	0	2	10	0	2
May 8	5	1	5	30	2	20	5	1	7	40	2	22
May 15	25	16	33	30	8	30	30	17	40	70	10	52
May 22	20	39	45	20	30	20	50	56	85	90	40	72
May 29	30	30	14	5	20	24	80	86	99	95	60	96
June 5	15	13	1	5	30	3	95	99	100	100	90	99
After June 5	5	1	0	0	10	1	100	100	100	100	100	100

**Table 8: MAINE POTATOES: Production and Stocks by Month, 2006 – 2011 Crop Years <sup>1</sup>**

Crop Year	Production	Stocks Held by Growers, Local Dealers, and Processors								
		Year	Following Year							
		December 1	January 1	February 1	March 1	April 1	May 1	June 1		
1,000 cwt										
2006	17,385	14,000	12,500	10,900	9,600	7,600	5,300	3,000		
2007	16,668	12,900	11,400	9,700	8,000	6,400	4,300	2,500		
2008	14,769	11,300	10,000	8,500	7,100	5,600	3,700	2,200		
2009	15,263	12,000	10,800	9,300	7,800	6,000	3,900	2,200		
2010	15,892	12,300	10,900	9,300	7,900	5,900	3,900	2,300		
2011	14,310	10,600	(NA)	7,400	(NA)	4,400	(NA)	1,600		

(NA) Not Available

<sup>1</sup> This data is derived from the monthly Potato Stocks/Price Survey also conducted by New England Agricultural Statistics.

SOURCE: *Potatoes*, September 20, 2012, National Agricultural Statistics Service, USDA.

**Table 9: MAINE POTATOES: Prices Received by Farmers for Potatoes, Monthly and Marketing Year Average, 2006 – 2011 Crop Years <sup>1 2</sup>**

Crop Year	Aug	Sep	Oct	Nov	Dec	Jan	Feb	Mar	Apr	May	Jun	Jul	Market Year Average
Dollars per Cwt													
2006	(D)	6.25	6.50	8.15	8.25	8.35	7.90	7.60	8.15	8.20	8.05	7.65	7.80
2007	(D)	6.20	6.40	7.25	7.55	7.60	8.00	8.55	8.65	9.15	8.75	8.55	7.90
2008	(D)	7.80	8.65	10.20	9.95	9.95	10.40	11.20	10.60	9.70	9.15	(D)	9.75
2009	(D)	(D)	8.80	9.75	9.75	9.90	9.95	10.50	10.90	10.90	10.20	(D)	10.10
2010	(D)	(D)	8.00	9.40	9.45	10.00	10.40	11.30	10.90	10.50	10.30	(D)	10.00
2011	(D)	(D)	(D)	9.70	10.20	10.30	11.00	11.20	11.80	11.20	(D)	(D)	10.40

(D) Missing data indicates too few potatoes being marketed to set price.

<sup>1</sup> This data is derived from the monthly Potato Stocks/Price Survey also conducted by New England Agricultural Statistics.

<sup>2</sup> Average price of potatoes sold for all uses, including table stock, processing, seed and livestock feed.

SOURCE: *Potatoes*, September 20, 2012, National Agricultural Statistics Service, USDA.

**Table 10: FALL POTATOES: Acreage, Yield, and Production, 2011 – 2012**<sup>1</sup>

State	Area Planted		Area Harvested		Yield per Acre		Production	
	2011	2012	2011	2012	2011	2012	2011	2012
	1,000 Acres				Cwt		1,000 Cwt	
California	8.8	8.8	8.8	8.8	490	490	4,312	4,312
Colorado	54.0	55.1	53.9	54.6	395	385	21,291	21,021
Idaho	320.0	345.0	319.0	344.0	404	416	128,760	143,240
<b>Maine</b>	<b>57.0</b>	<b>57.5</b>	<b>54.0</b>	<b>57.0</b>	<b>265</b>	<b>275</b>	<b>14,310</b>	<b>15,675</b>
Massachusetts	3.6	3.9	2.8	3.9	275	350	770	1,365
Michigan	45.0	46.5	44.0	45.5	345	350	15,180	15,925
Minnesota	49.0	49.0	47.0	47.0	355	400	16,685	18,800
Montana	11.7	12.0	11.5	11.7	330	320	3,795	3,744
Nebraska	20.0	23.0	19.5	22.8	400	445	7,800	10,146
Nevada	(D)	7.1	(D)	7.1	(D)	390	(D)	2,769
New Mexico	(D)	6.3	(D)	6.2	(D)	460	(D)	2,852
New York	16.5	17.0	16.2	16.5	250	285	4,050	4,703
North Dakota	84.0	88.0	77.0	84.0	245	300	18,865	25,200
Ohio	2.0	(D)	1.7	(D)	270	(D)	459	(D)
Oregon	40.0	42.0	39.9	41.9	585	550	23,342	23,045
Pennsylvania	9.2	8.9	7.8	8.6	260	260	2,028	2,236
Rhode Island	0.6	(D)	0.6	(D)	250	(D)	150	(D)
Washington	160.0	165.0	160.0	164.0	610	595	97,600	97,580
Wisconsin	63.0	64.5	62.5	64.0	415	460	25,938	29,440
Other States <sup>2</sup>	13.3	2.1	13.3	2.0	439	241	5,845	482
<b>United States Fall Crop</b>	<b>957.7</b>	<b>1,001.7</b>	<b>939.5</b>	<b>989.6</b>	<b>416</b>	<b>427</b>	<b>391,180</b>	<b>422,535</b>

(D) Withheld to avoid disclosing data for individual operations.

<sup>1</sup> Data in this table are not derived solely from the Potato Objective Yield Survey; data are derived from other end of year surveys conducted by New England Agricultural Statistics.<sup>2</sup> Includes data withheld above.SOURCE: *Crop Production – Annual*, January 11, 2013, National Agricultural Statistics Service, USDA.**Gary R. Keough**, Director**Alexander I Slosman**, Editorial Assistant**Ty Kalas**, Deputy Director

Statisticians: Robin Helrich, Dianne Johnson

Statistical Assistants: Lynne Arsenaault, Deirdre Davis