

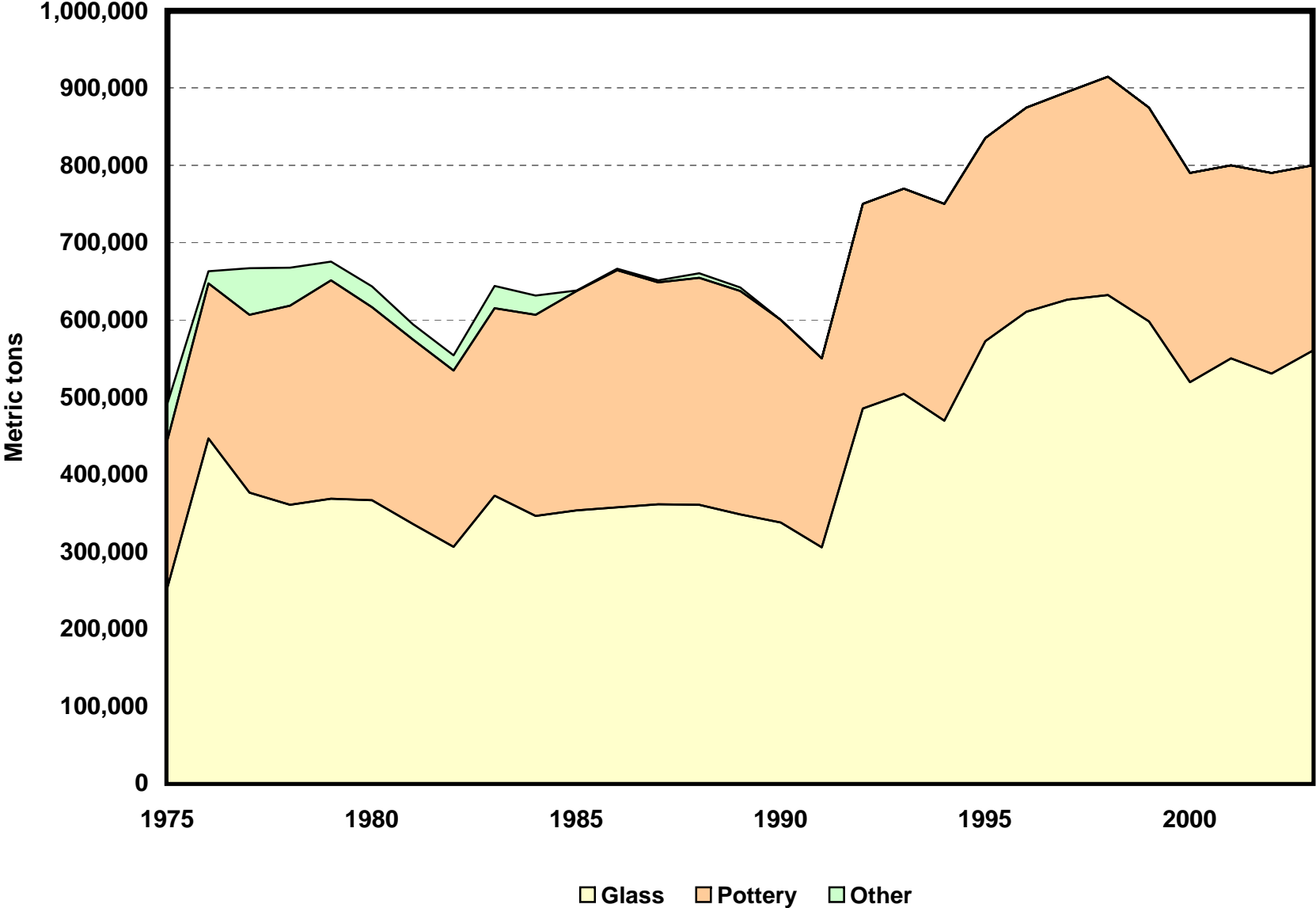
FELDSPAR END-USE STATISTICS¹
U.S. GEOLOGICAL SURVEY
[Metric tons]
Last modification: September 15, 2005

Year	Glass	Pottery	Other	Undistributed	Apparent consumption
1975	253,000	191,000	47,500	500,000	991,000
1976	446,000	201,000	15,800	457,000	1,120,000
1977	376,000	230,000	60,900	454,000	1,120,000
1978	360,000	258,000	49,000	483,000	1,150,000
1979	368,000	283,000	24,500	475,000	1,150,000
1980	366,000	250,000	27,200	446,000	1,090,000
1981	335,000	239,000	20,000	456,000	1,050,000
1982	306,000	228,000	20,000	409,000	962,000
1983	372,000	243,000	29,000	366,000	1,010,000
1984	346,000	260,000	25,400	343,000	978,000
1985	353,000	284,000	907	294,000	929,000
1986	357,000	307,000	1,810	261,000	928,000
1987	361,000	287,000	2,720	278,000	931,000
1988	360,000	294,000	6,350	263,000	925,000
1989	348,000	289,000	5,000	319,000	961,000
1990	337,000	263,000	W	293,000	893,000
1991	305,000	245,000	W	328,000	878,000
1992	485,000	265,000	W	310,000	1,060,000
1993	504,000	266,000	W	280,000	1,050,000
1994	469,000	281,000	W	340,000	1,090,000
1995	572,000	263,000	W	355,000	1,190,000
1996	610,000	265,000	W	255,000	1,130,000
1997	626,000	269,000	W	355,000	1,250,000
1998	632,000	283,000	W	215,000	1,130,000
1999	598,000	277,000	W	305,000	1,180,000
2000	519,000	271,000	W	350,000	1,140,000
2001	550,000	250,000	W	340,000	1,140,000
2002	530,000	260,000	W	330,000	1,120,000
2003	560,000	240,000	W	330,000	1,100,000

W Withheld to avoid disclosing company proprietary data; data included with the pottery category.

¹Compiled by G.R. Matos and M.J. Potter.

End Uses of Feldspar



Feldspar End-Use Worksheet Notes

Data Source

The source of data for the feldspar end-use worksheet is the Minerals Yearbook, an annual collection, compilation, and analysis of mineral industry data, published by the U.S. Bureau of Mines and the U.S. Geological Survey.

End Use

End use is defined as the use of the mineral commodity in a particular industrial sector or product. For feldspar, end-use categories are glass, pottery, and other industrial uses. The undistributed category accounts mainly for imports of nepheline syenite from Ontario, Canada, and some feldspar for which end uses were unknown.

The glass category includes container glass, flat glass, fiber glass, and other glass uses. The pottery category includes electrical insulators, sanitaryware, tableware, and tile. The other uses category includes abrasives, enamel, filler, and other industrial uses.

The feldspar end-use data includes hand-cobbed feldspar, flotation concentrate feldspar, feldspar-silica mixture of feldspar content, and beginning in 1992, aplite feldspar. In 1995, three plants producing glass sand were added to the survey. The undistributed category reflects a decrease in imports during the early to mid-1980s due to the closing of some glass container manufacturing plants in New England.

W in spreadsheet indicates information withheld to avoid disclosing company proprietary data. Withheld data are included with the pottery category. Data are rounded to no more than three significant digits; data may not add to totals shown.

References

U.S. Bureau of Mines, 1977–96, Minerals Yearbook, v. I, 1975–94.

U.S. Geological Survey, 1997–2005, Minerals Yearbook, v. I, 1995–2003.

Recommended Citation Format:

(1) If taken from CD version:

U.S. Geological Survey, [year of last update, e.g., 2005], [Mineral commodity, e.g., Gold] statistics, *in* Kelly, T.D., and Matos, G.R., comps., Historical statistics for mineral and material commodities in the United States: U.S. Geological Survey Data Series 140, one CD-ROM. (Also available online at <http://pubs.usgs.gov/ds/2005/140/>.)

(2) If taken from online version:

U.S. Geological Survey, [year of last update, e.g., 2005], [Mineral commodity, e.g., Gold] statistics, *in* Kelly, T.D., and Matos, G.R., comps., Historical statistics for mineral and material commodities in the United States: U.S. Geological Survey Data Series 140, available online at <http://pubs.usgs.gov/ds/2005/140/>. (Accessed [date].)

For more information, please contact:

[USGS Feldspar Commodity Specialist](#)