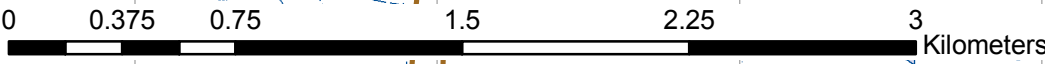


Sparta Training Area

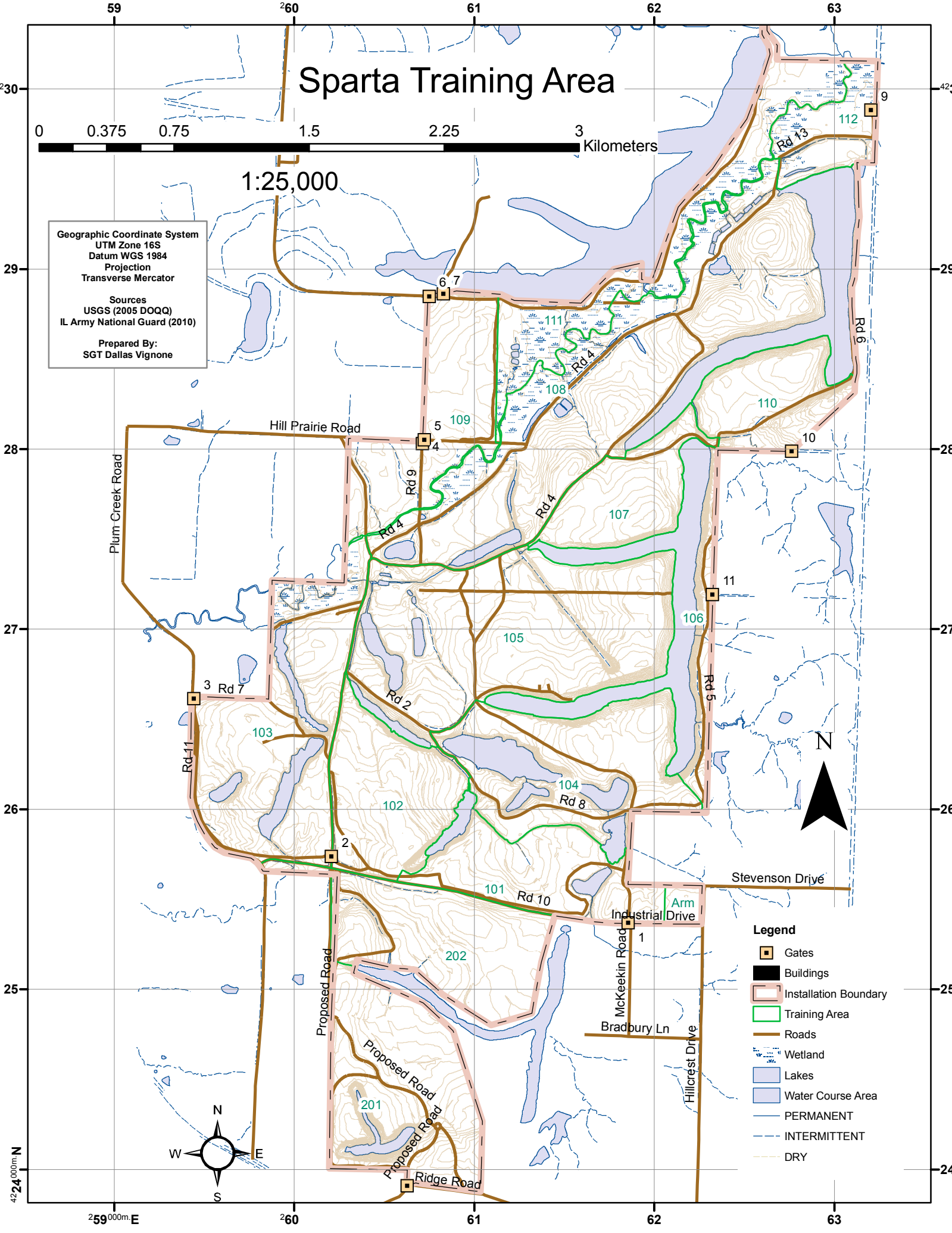


1:25,000

Geographic Coordinate System
 UTM Zone 16S
 Datum WGS 1984
 Projection
 Transverse Mercator

Sources
 USGS (2005 DOQQ)
 IL Army National Guard (2010)

Prepared By:
 SGT Dallas Vignone



- Legend**
- Gates
 - Buildings
 - Installation Boundary
 - Training Area
 - Roads
 - Wetland
 - Lakes
 - Water Course Area
 - PERMANENT
 - INTERMITTENT
 - DRY

