

# Opening Doors

FEDERAL STRATEGIC PLAN TO PREVENT AND END HOMELESSNESS

AMENDMENT 2012



## USICH Framework Logic Model for Ending Youth Homelessness

INVOLVES FEDERAL, STATE, AND LOCAL PARTICIPATION AND COLLABORATION

**JUNE 2012**

**PHASE I MILESTONES**

May require new resources

**PHASE II MILESTONES**

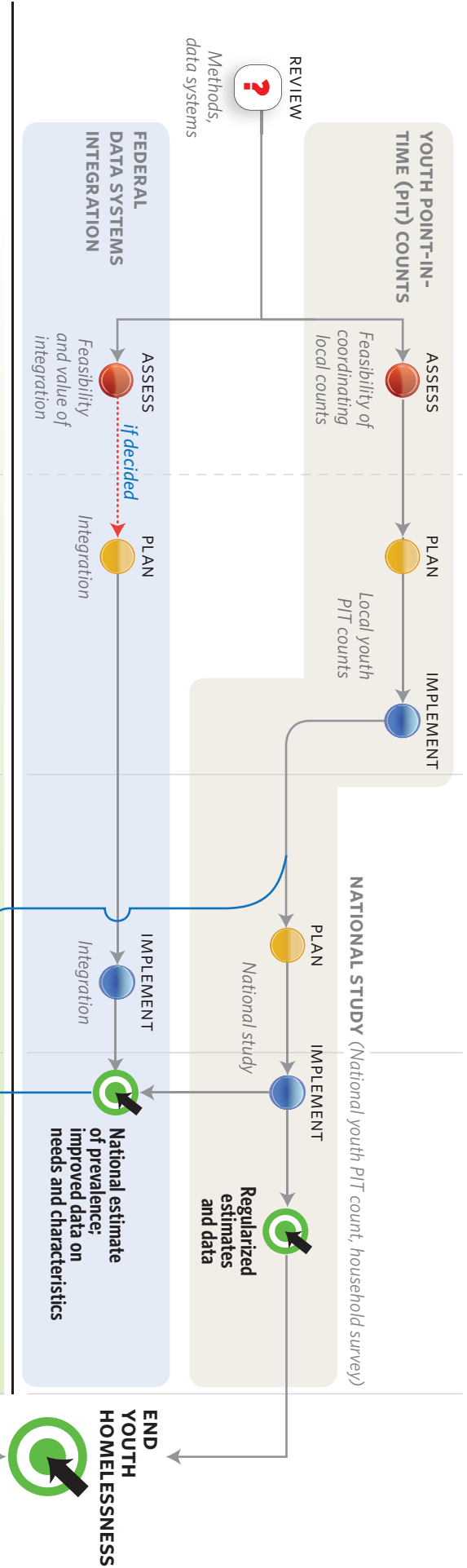
May require new resources and/or legislative authority

**PHASE III OUTCOMES**

**2020**

### DATA STRATEGY

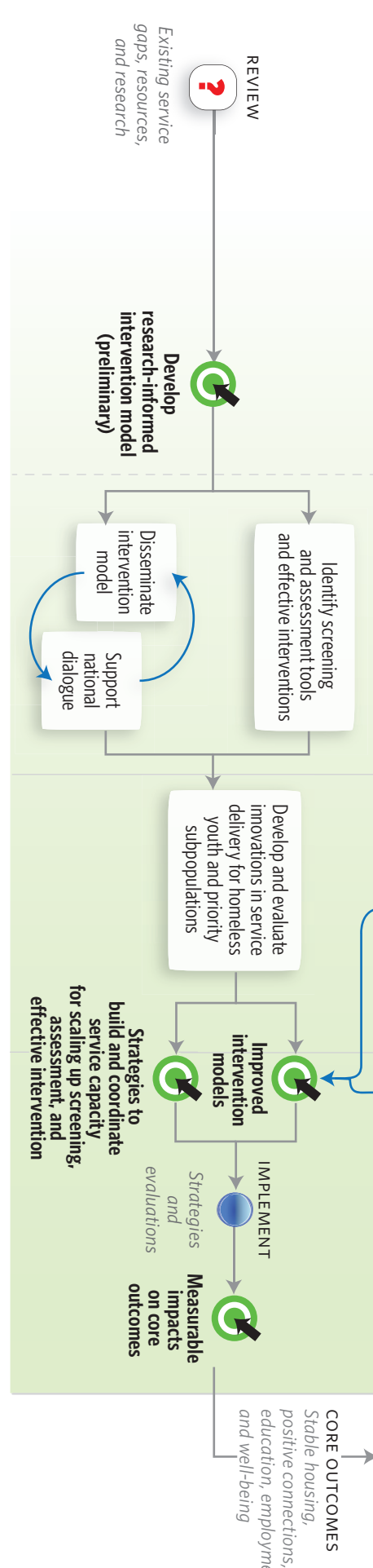
To understand prevalence, characteristics, and needs of homeless youth



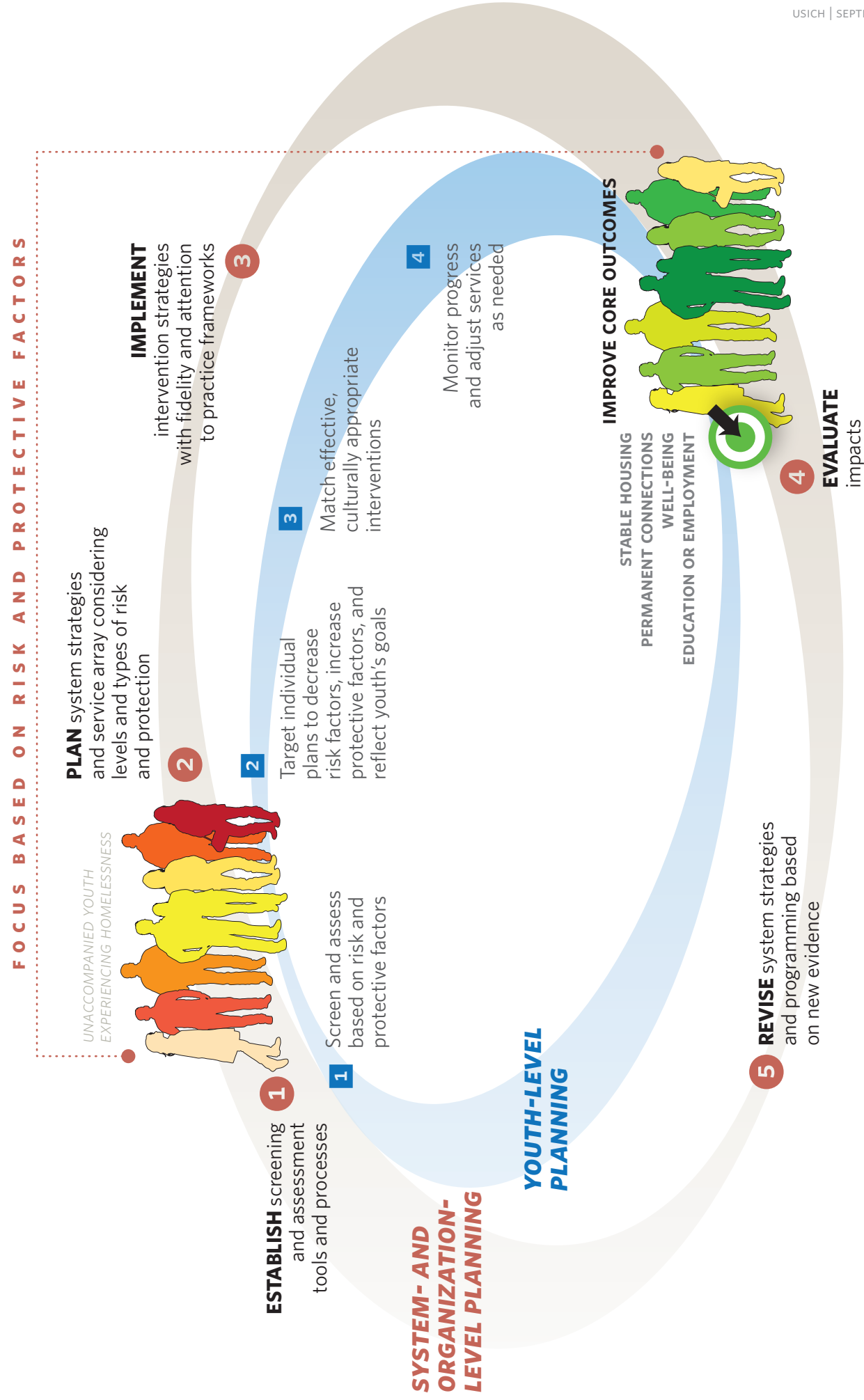
**CORE OUTCOMES**  
Stable housing,  
positive connections,  
education, employment,  
and well-being

### CAPACITY STRATEGY

To support improved service delivery



# Unaccompanied Youth Intervention Model



**1 SYSTEM- AND ORGANIZATION-LEVEL CONSIDERATIONS**

**LIKELIHOOD OF RISK**  
Time Experiencing Homelessness and Disconnection  
less time | more time  
LOWER RISK | HIGHER RISK  
HIGHER PROTECTION | LOWER PROTECTION

**RISK AND PROTECTION GROUPS**

**RISKY**  
High risk factors, low protective factors

**AT-RISK**  
High risk factors, some protective factors

**LOWER RISK**  
Low-to-medium risk factors, high protective factors

**2 TARGETING PLANS TO FACTORS**

**RISK FACTORS**  
*Problematic symptoms, behaviors, associations*

- Trauma
- Emotional distress
- Sexual risk behavior
- Family problems
- Criminal or delinquent behavior
- Substance abuse

**PROTECTIVE FACTORS**  
*Positive skills, attitudes, behaviors, associations*

- Family cohesion and support
- School engagement or employment
- Survival skills
- Positive connections
- Positive future expectations
- Decision-making skills
- Self-esteem and self-efficacy
- Health

**3 IMPLEMENT**

**INTERVENTION STRATEGIES**

- Housing
- Treatment
- School and community programs
- Family supports

**PRACTICE FRAMEWORKS**

- Positive youth development
- Trauma-informed

