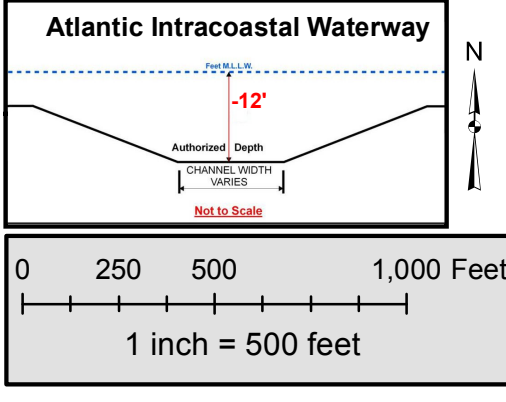


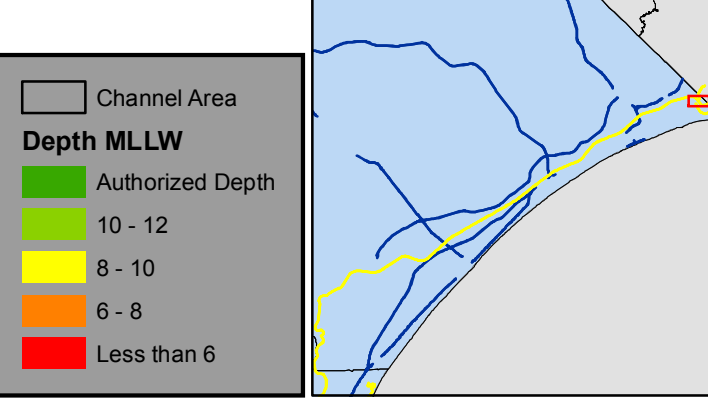


AIWW L_B 1



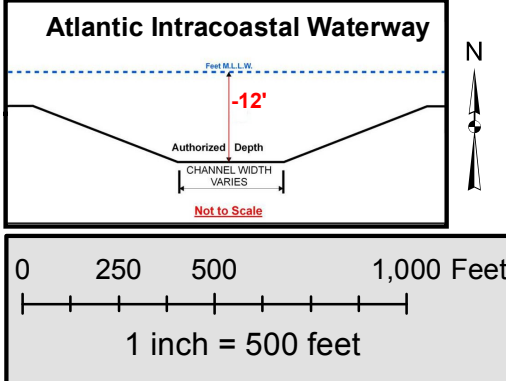
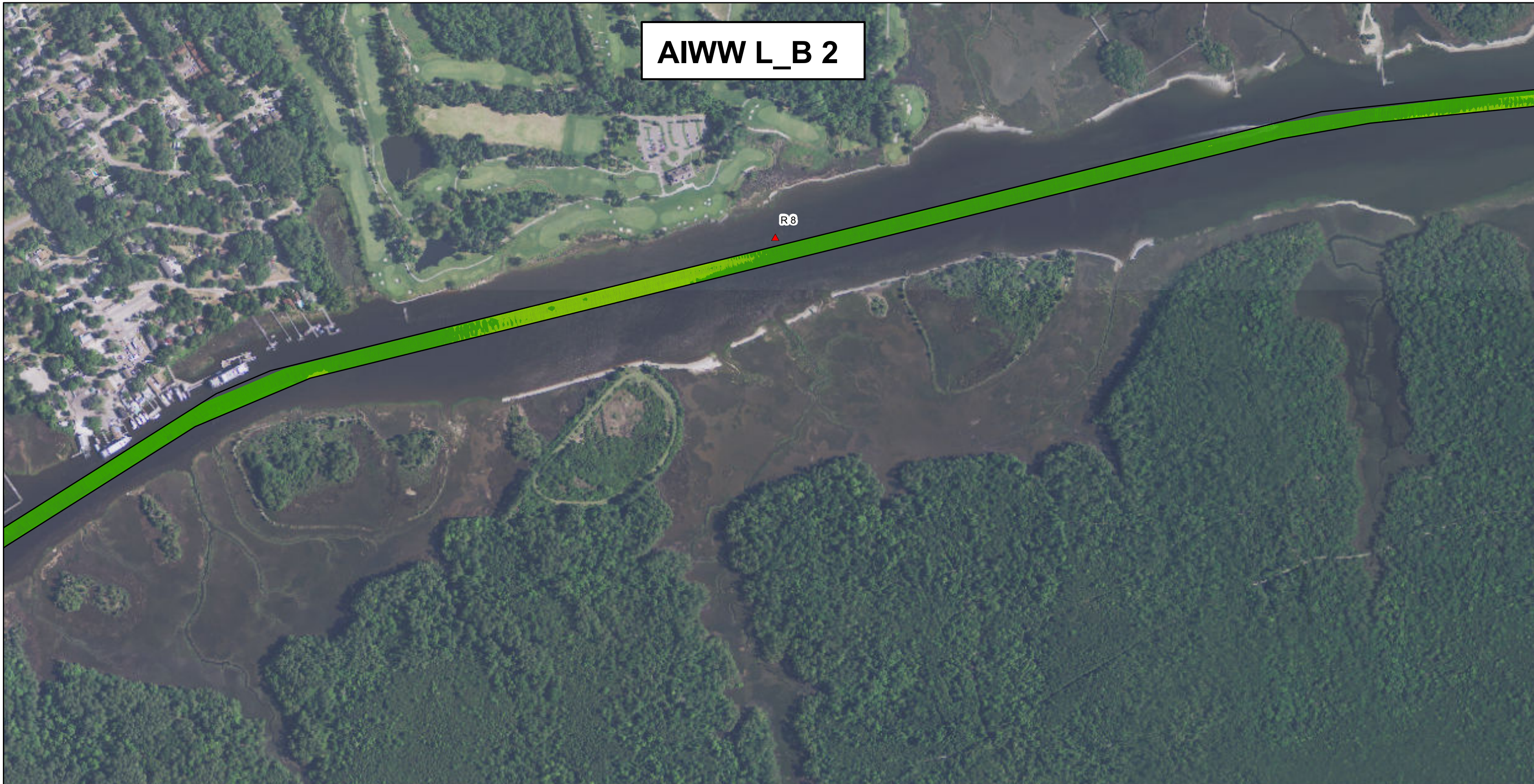
Notes:

- Soundings are expressed in positive feet and tenths and are referenced the Mean Lower Low Water (MLLW) datum
- Project surveyed with USACE survey vessels equipped with GPS positioning and hydrographic survey equipment that meets USACE Navigation and Dredging standards for soft bottom hydrographic surveys.
- Soundings are calibrated to tide gauges that are set to MLLW and referenced to published benchmarks
- Horizontal Datum: State Plane NAD-83 SC-3900 Int'l Feet
- Project was designed by the Charleston District of the U.S. Army Corps of Engineers. The initials or signatures and registration designations of individuals appear on these project documents within the scope of their employment by ER 1110-1-8152
- Maps and associated information represents the result of surveys made on the date indicated and can only be considered as indicating the general condition existing at that time. These conditions are subject to rapid change due to shoaling events. A prudent mariner should not rely exclusively on the information provided here
- Aids to Navigation obtained from the U.S. Coast Guard Light List



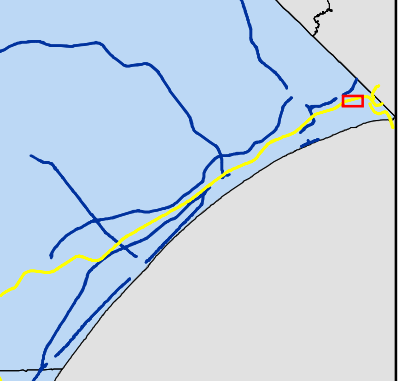
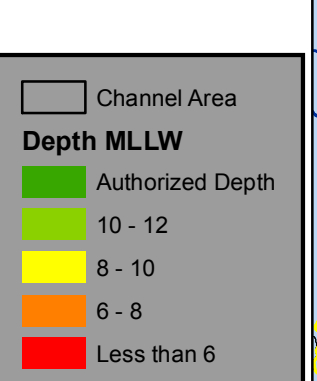
Survey Area: Atlantic Intracoastal Waterway - Little River to Bucksport	
Survey Date:	Dec. 2012
Survey Crew:	USACE Hydro Survey Team
Survey File Name:	20121200_ICW_LRWB_SB_CS
Imagery/Background:	2011 NRCS NAIP Imagery RGB
Mapped By:	C. Brewer

AIWW L_B 2



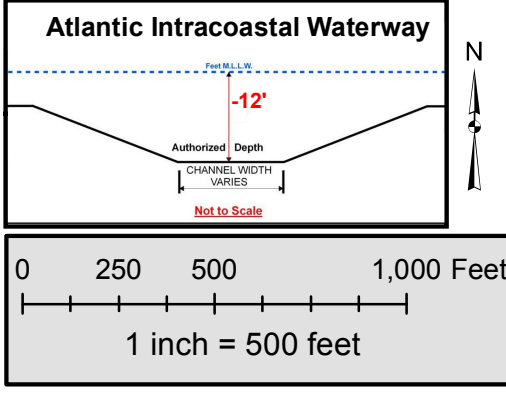
Notes:

- Soundings are expressed in positive feet and tenths and are referenced the Mean Lower Low Water (MLLW) datum
- Project surveyed with USACE survey vessels equipped with GPS positioning and hydrographic survey equipment that meets USACE Navigation and Dredging standards for soft bottom hydrographic surveys.
- Soundings are calibrated to tide gauges that are set to MLLW and referenced to published benchmarks
- Horizontal Datum: State Plane NAD-83 SC-3900 Int'l Feet
- Project was designed by the Charleston District of the U.S. Army Corps of Engineers. The initials or signatures and registration designations of individuals appear on these project documents within the scope of their employment by ER 1110-1-8152
- Maps and associated information represents the result of surveys made on the date indicated and can only be considered as indicating the general condition existing at that time. These conditions are subject to rapid change due to shoaling events. A prudent mariner should not rely exclusively on the information provided here
- Aids to Navigation obtained from the U.S. Coast Guard Light List



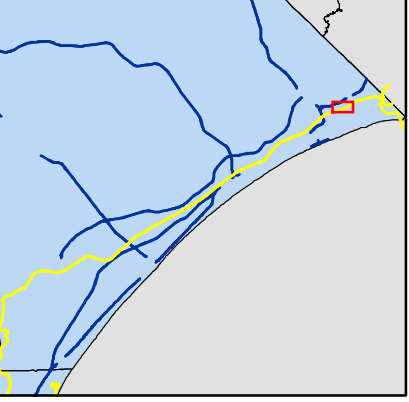
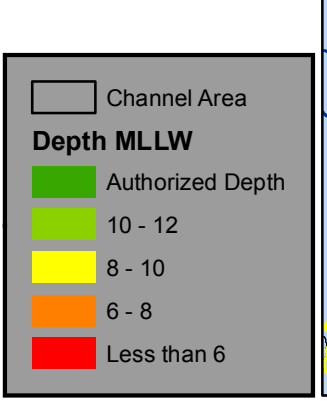
Survey Area: Atlantic Intracoastal Waterway - Little River to Bucksport	
Survey Date:	Dec. 2012
Survey Crew:	USACE Hydro Survey Team
Survey File Name:	20121200_ICW_LRWB_SB_CS
Imagery/Background:	2011 NRCS NAIP Imagery RGB
Mapped By:	C. Brewer

AIWW L_B 3



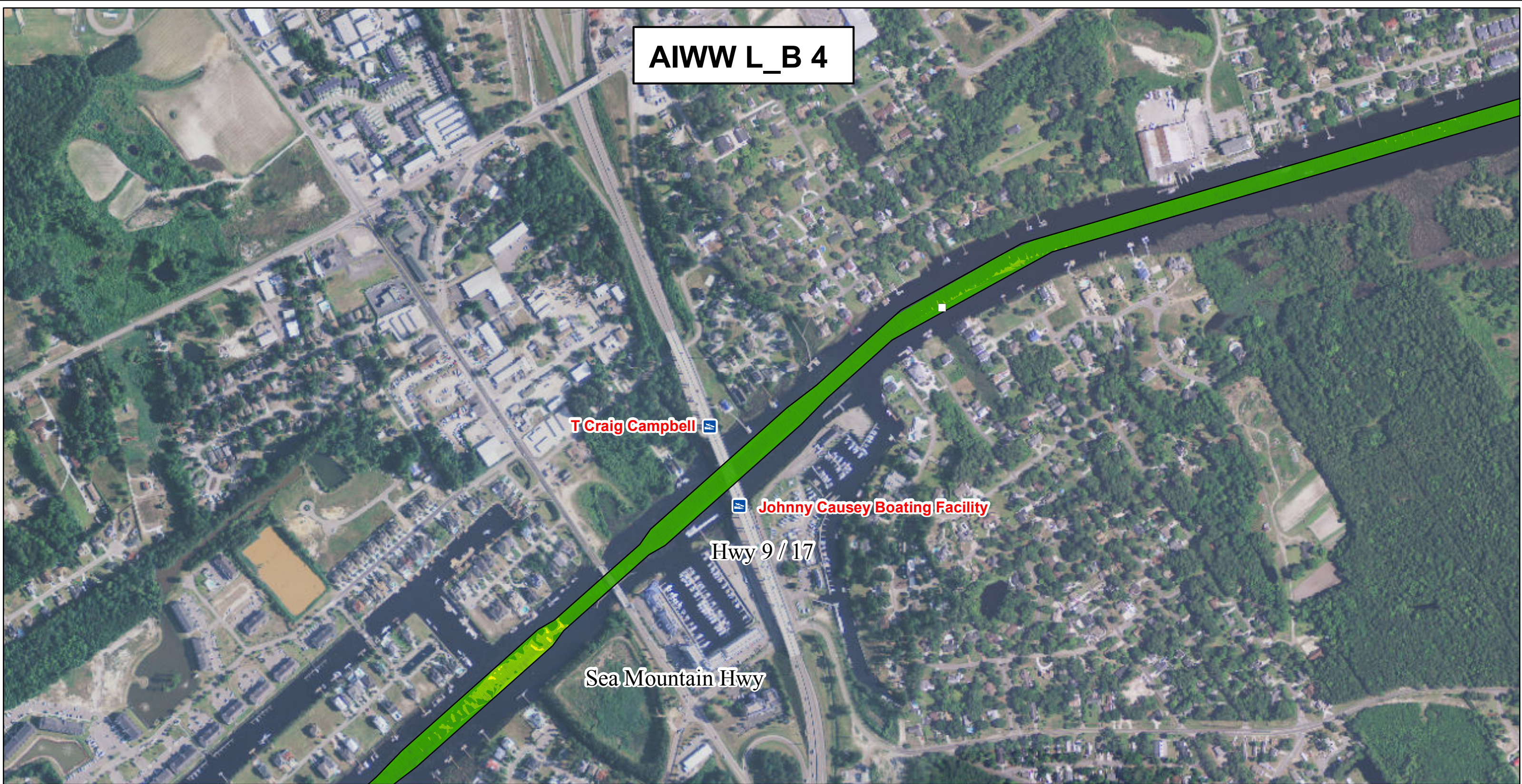
Notes:

- Soundings are expressed in positive feet and tenths and are referenced the Mean Lower Low Water (MLLW) datum
- Project surveyed with USACE survey vessels equipped with GPS positioning and hydrographic survey equipment that meets USACE Navigation and Dredging standards for soft bottom hydrographic surveys.
- Soundings are calibrated to tide gauges that are set to MLLW and referenced to published benchmarks
- Horizontal Datum: State Plane NAD-83 SC-3900 Int'l Feet
- Project was designed by the Charleston District of the U.S. Army Corps of Engineers. The initials or signatures and registration designations of individuals appear on these project documents within the scope of their employment by ER 1110-1-8152
- Maps and associated information represents the result of surveys made on the date indicated and can only be considered as indicating the general condition existing at that time. These conditions are subject to rapid change due to shoaling events. A prudent mariner should not rely exclusively on the information provided here
- Aids to Navigation obtained from the U.S. Coast Guard Light List



Survey Area: Atlantic Intracoastal Waterway - Little River to Bucksport	
Survey Date:	Dec. 2012
Survey Crew:	USACE Hydro Survey Team
Survey File Name:	20121200_ICW_LRWB_SB_CS
Imagery/Background:	2011 NRCS NAIP Imagery RGB
Mapped By:	C. Brewer

AIWW L_B 4

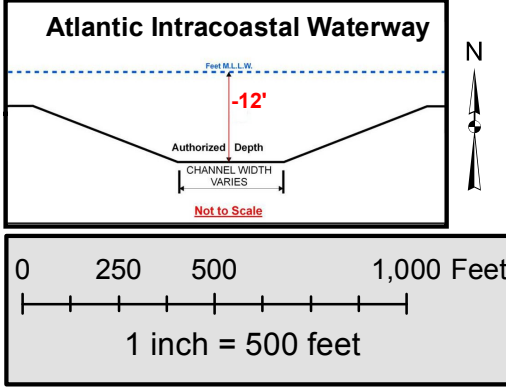


T Craig Campbell

Johnny Causey Boating Facility

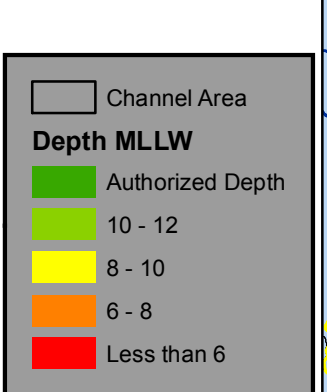
Hwy 9 / 17


Sea Mountain Hwy



Notes:

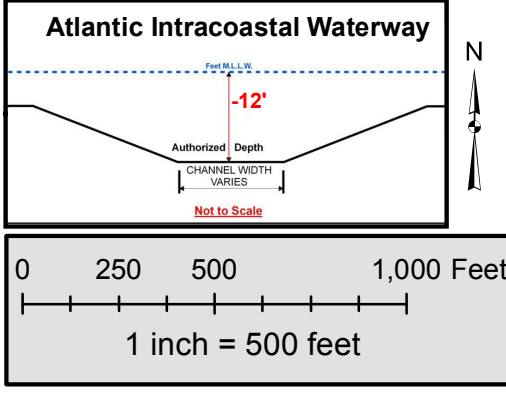
- Soundings are expressed in positive feet and tenths and are referenced the Mean Lower Low Water (MLLW) datum
- Project surveyed with USACE survey vessels equipped with GPS positioning and hydrographic survey equipment that meets USACE Navigation and Dredging standards for soft bottom hydrographic surveys.
- Soundings are calibrated to tide gauges that are set to MLLW and referenced to published benchmarks
- Horizontal Datum: State Plane NAD-83 SC-3900 Int'l Feet
- Project was designed by the Charleston District of the U.S. Army Corps of Engineers. The initials or signatures and registration designations of individuals appear on these project documents within the scope of their employment by ER 1110-1-8152
- Maps and associated information represents the result of surveys made on the date indicated and can only be considered as indicating the general condition existing at that time. These conditions are subject to rapid change due to shoaling events. A prudent mariner should not rely exclusively on the information provided here
- Aids to Navigation obtained from the U.S. Coast Guard Light List





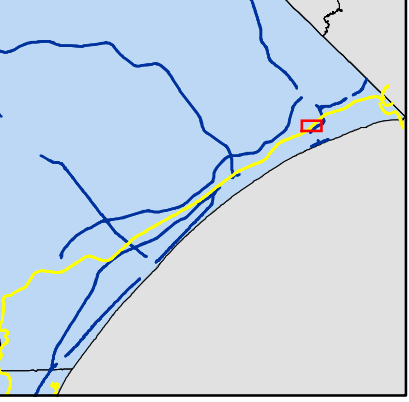
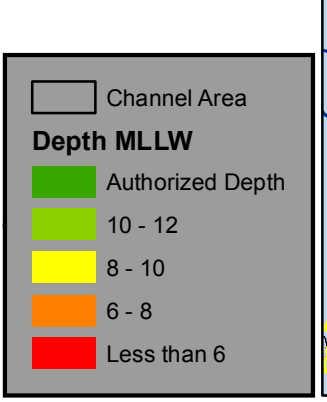
Survey Area: Atlantic Intracoastal Waterway - Little River to Bucksport	
Survey Date:	Dec. 2012
Survey Crew:	USACE Hydro Survey Team
Survey File Name:	20121200_ICW_LRWB_SB_CS
Imagery/Background:	2011 NRCS NAIP Imagery RGB
Mapped By:	C. Brewer

AIWW L_B 5



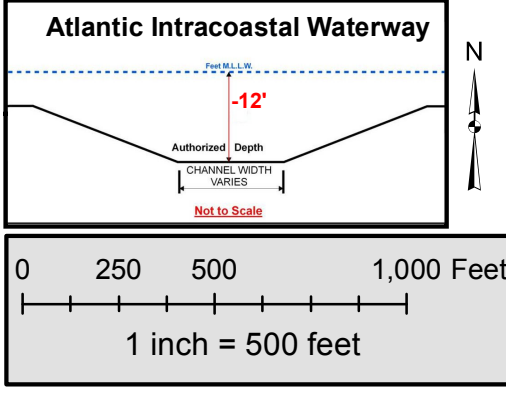
Notes:

- Soundings are expressed in positive feet and tenths and are referenced the Mean Lower Low Water (MLLW) datum
- Project surveyed with USACE survey vessels equipped with GPS positioning and hydrographic survey equipment that meets USACE Navigation and Dredging standards for soft bottom hydrographic surveys.
- Soundings are calibrated to tide gauges that are set to MLLW and referenced to published benchmarks
- Horizontal Datum: State Plane NAD-83 SC-3900 Int'l Feet
- Project was designed by the Charleston District of the U.S. Army Corps of Engineers. The initials or signatures and registration designations of individuals appear on these project documents within the scope of their employment by ER 1110-1-8152
- Maps and associated information represents the result of surveys made on the date indicated and can only be considered as indicating the general condition existing at that time. These conditions are subject to rapid change due to shoaling events. A prudent mariner should not rely exclusively on the information provided here
- Aids to Navigation obtained from the U.S. Coast Guard Light List



Survey Area: Atlantic Intracoastal Waterway - Little River to Bucksport	
Survey Date:	Dec. 2012
Survey Crew:	USACE Hydro Survey Team
Survey File Name:	20121200_ICW_LRWB_SB_CS
Imagery/Background:	2011 NRCS NAIP Imagery RGB
Mapped By:	C. Brewer

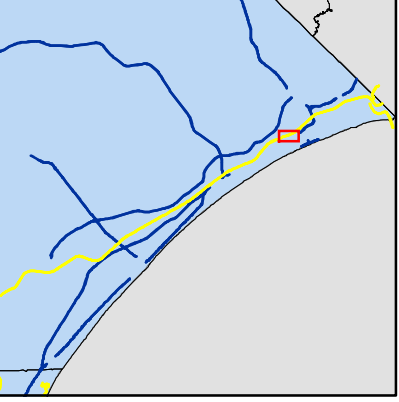
AIWW L_B 6



Notes:

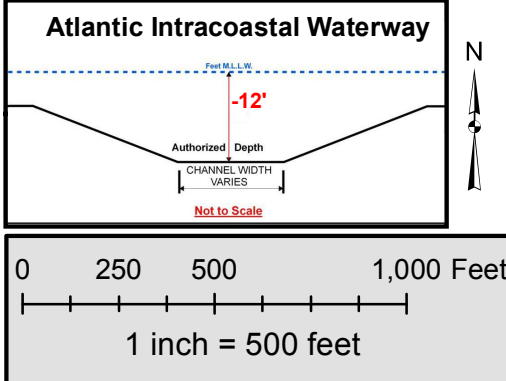
- Soundings are expressed in positive feet and tenths and are referenced the Mean Lower Low Water (MLLW) datum
- Project surveyed with USACE survey vessels equipped with GPS positioning and hydrographic survey equipment that meets USACE Navigation and Dredging standards for soft bottom hydrographic surveys.
- Soundings are calibrated to tide gauges that are set to MLLW and referenced to published benchmarks
- Horizontal Datum: State Plane NAD-83 SC-3900 Int'l Feet
- Project was designed by the Charleston District of the U.S. Army Corps of Engineers. The initials or signatures and registration designations of individuals appear on these project documents within the scope of their employment by ER 1110-1-8152
- Maps and associated information represents the result of surveys made on the date indicated and can only be considered as indicating the general condition existing at that time. These conditions are subject to rapid change due to shoaling events. A prudent mariner should not rely exclusively on the information provided here
- Aids to Navigation obtained from the U.S. Coast Guard Light List

	Channel Area
Depth MLLW	
	Authorized Depth
	10 - 12
	8 - 10
	6 - 8
	Less than 6



Survey Area: Atlantic Intracoastal Waterway - Little River to Bucksport	
Survey Date:	Dec. 2012
Survey Crew:	USACE Hydro Survey Team
Survey File Name:	20121200_ICW_LRWB_SB_CS
Imagery/Background:	2011 NRCS NAIP Imagery RGB
Mapped By:	C. Brewer

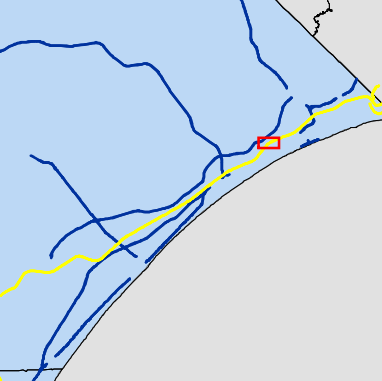
AIWW L_B 7



Notes:

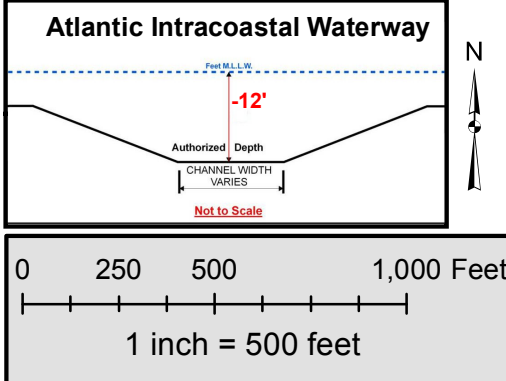
- Soundings are expressed in positive feet and tenths and are referenced the Mean Lower Low Water (MLLW) datum
- Project surveyed with USACE survey vessels equipped with GPS positioning and hydrographic survey equipment that meets USACE Navigation and Dredging standards for soft bottom hydrographic surveys.
- Soundings are calibrated to tide gauges that are set to MLLW and referenced to published benchmarks
- Horizontal Datum: State Plane NAD-83 SC-3900 Int'l Feet
- Project was designed by the Charleston District of the U.S. Army Corps of Engineers. The initials or signatures and registration designations of individuals appear on these project documents within the scope of their employment by ER 1110-1-8152
- Maps and associated information represents the result of surveys made on the date indicated and can only be considered as indicating the general condition existing at that time. These conditions are subject to rapid change due to shoaling events. A prudent mariner should not rely exclusively on the information provided here
- Aids to Navigation obtained from the U.S. Coast Guard Light List

	Channel Area
Depth MLLW	
	Authorized Depth
	10 - 12
	8 - 10
	6 - 8
	Less than 6



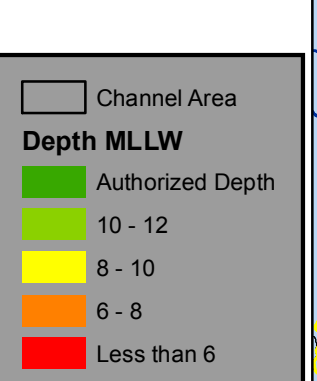
Survey Area: Atlantic Intracoastal Waterway - Little River to Bucksport	
Survey Date:	Dec. 2012
Survey Crew:	USACE Hydro Survey Team
Survey File Name:	20121200_ICW_LRWB_SB_CS
Imagery/Background:	2011 NRCS NAIP Imagery RGB
Mapped By:	C. Brewer

AIWW L_B 8



Notes:

- Soundings are expressed in positive feet and tenths and are referenced the Mean Lower Low Water (MLLW) datum
- Project surveyed with USACE survey vessels equipped with GPS positioning and hydrographic survey equipment that meets USACE Navigation and Dredging standards for soft bottom hydrographic surveys.
- Soundings are calibrated to tide gauges that are set to MLLW and referenced to published benchmarks
- Horizontal Datum: State Plane NAD-83 SC-3900 Intl Feet
- Project was designed by the Charleston District of the U.S. Army Corps of Engineers. The initials or signatures and registration designations of individuals appear on these project documents within the scope of their employment by ER 1110-1-8152
- Maps and associated information represents the result of surveys made on the date indicated and can only be considered as indicating the general condition existing at that time. These conditions are subject to rapid change due to shoaling events. A prudent mariner should not rely exclusively on the information provided here
- Aids to Navigation obtained from the U.S. Coast Guard Light List

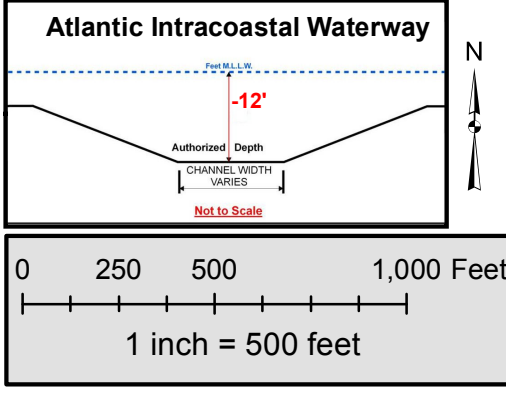
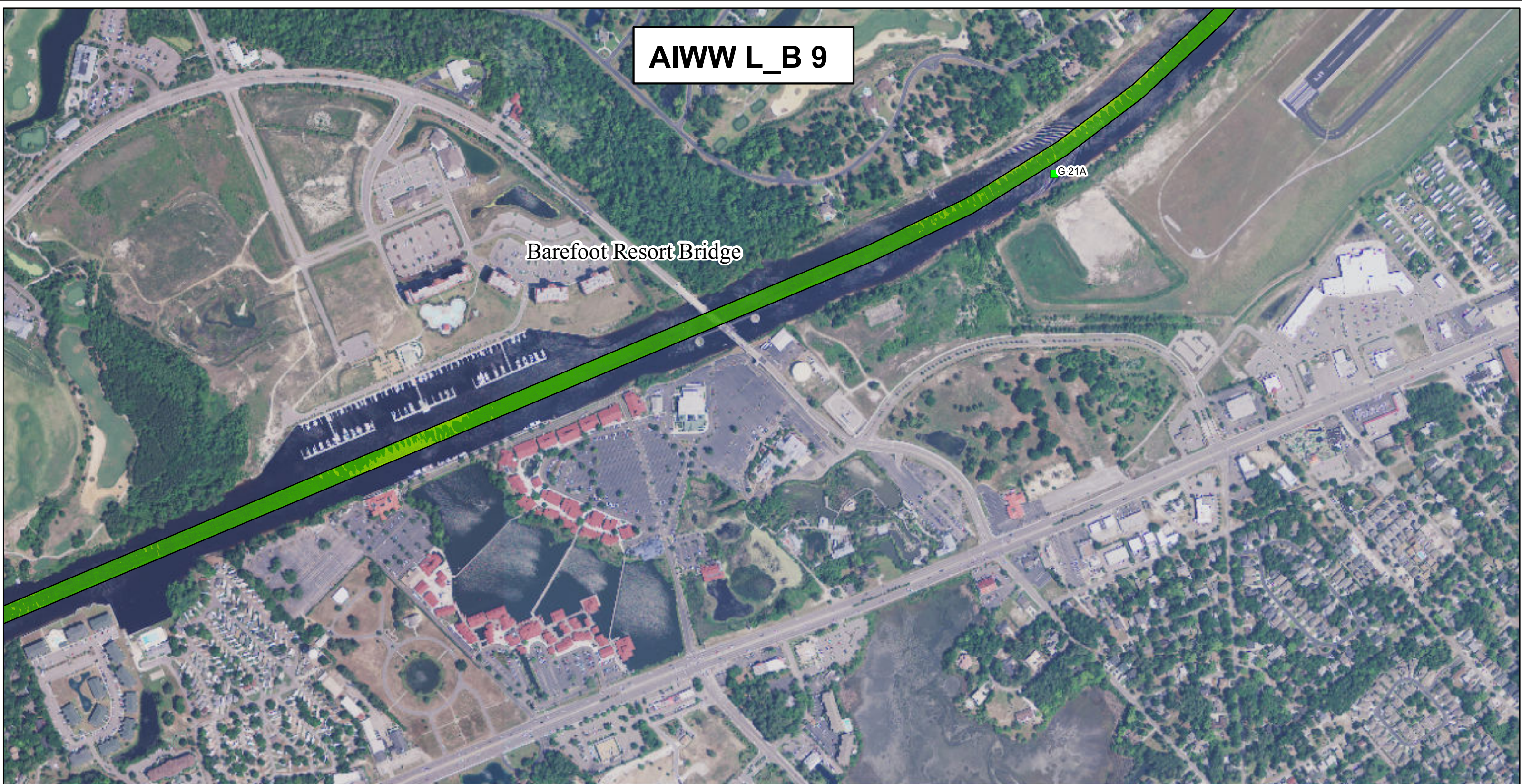


Survey Area: Atlantic Intracoastal Waterway - Little River to Bucksport	
Survey Date:	Dec. 2012
Survey Crew:	USACE Hydro Survey Team
Survey File Name:	20121200_ICW_LRWB_SB_CS
Imagery/Background:	2011 NRCS NAIP Imagery RGB
Mapped By:	C. Brewer

AIWW L_B 9

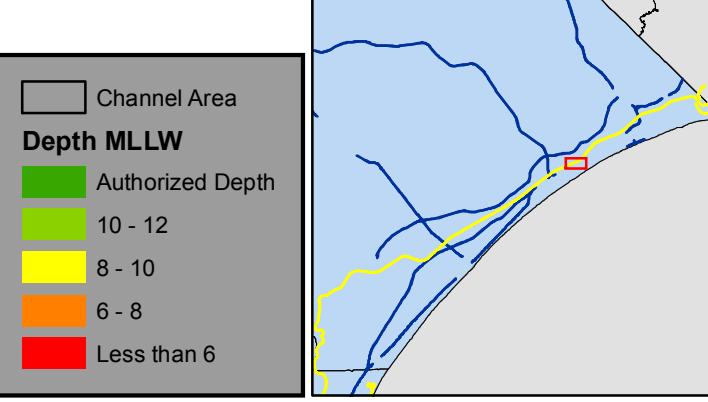
Barefoot Resort Bridge

G 21A



Notes:

- Soundings are expressed in positive feet and tenths and are referenced the Mean Lower Low Water (MLLW) datum
- Project surveyed with USACE survey vessels equipped with GPS positioning and hydrographic survey equipment that meets USACE Navigation and Dredging standards for soft bottom hydrographic surveys.
- Soundings are calibrated to tide gauges that are set to MLLW and referenced to published benchmarks
- Horizontal Datum: State Plane NAD-83 SC-3900 Int'l Feet
- Project was designed by the Charleston District of the U.S. Army Corps of Engineers. The initials or signatures and registration designations of individuals appear on these project documents within the scope of their employment by ER 1110-1-8152
- Maps and associated information represents the result of surveys made on the date indicated and can only be considered as indicating the general condition existing at that time. These conditions are subject to rapid change due to shoaling events. A prudent mariner should not rely exclusively on the information provided here
- Aids to Navigation obtained from the U.S. Coast Guard Light List

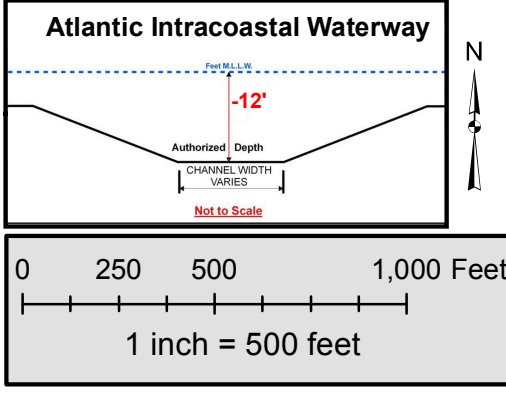


Survey Area: Atlantic Intracoastal Waterway - Little River to Bucksport	
Survey Date:	Dec. 2012
Survey Crew:	USACE Hydro Survey Team
Survey File Name:	20121200_ICW_LRWB_SB_CS
Imagery/Background:	2011 NRCS NAIP Imagery RGB
Mapped By:	C. Brewer

AIWW L_B 10

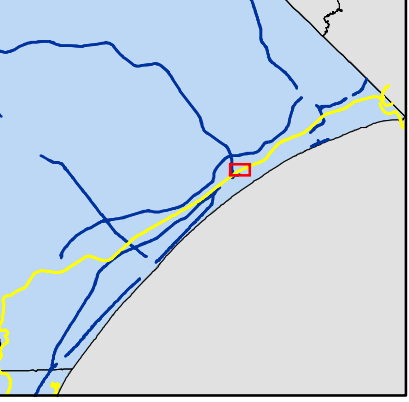
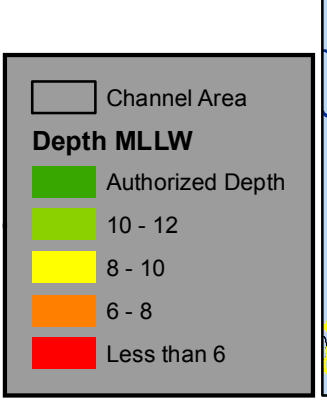


Veterans Hwy



Notes:

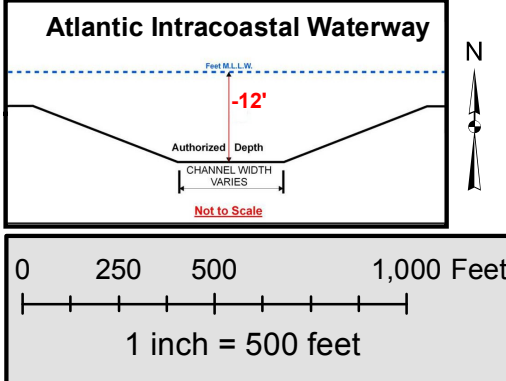
- Soundings are expressed in positive feet and tenths and are referenced the Mean Lower Low Water (MLLW) datum
- Project surveyed with USACE survey vessels equipped with GPS positioning and hydrographic survey equipment that meets USACE Navigation and Dredging standards for soft bottom hydrographic surveys.
- Soundings are calibrated to tide gauges that are set to MLLW and referenced to published benchmarks
- Horizontal Datum: State Plane NAD-83 SC-3900 Int'l Feet
- Project was designed by the Charleston District of the U.S. Army Corps of Engineers. The initials or signatures and registration designations of individuals appear on these project documents within the scope of their employment by ER 1110-1-8152
- Maps and associated information represents the result of surveys made on the date indicated and can only be considered as indicating the general condition existing at that time. These conditions are subject to rapid change due to shoaling events. A prudent mariner should not rely exclusively on the information provided here
- Aids to Navigation obtained from the U.S. Coast Guard Light List



Survey Area: Atlantic Intracoastal Waterway - Little River to Bucksport	
Survey Date:	Dec. 2012
Survey Crew:	USACE Hydro Survey Team
Survey File Name:	20121200_ICW_LRWB_SB_CS
Imagery/Background:	2011 NRCS NAIP Imagery RGB
Mapped By:	C. Brewer

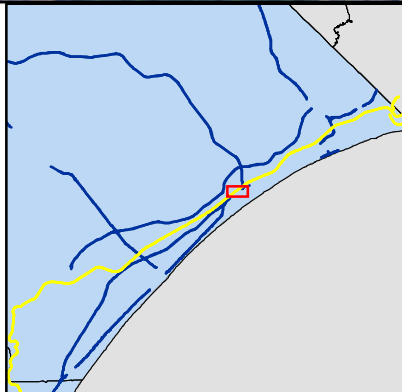
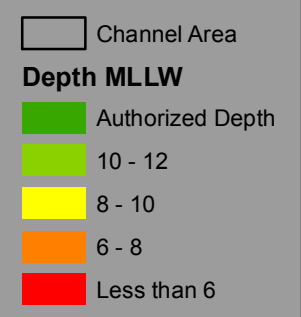
AIWW L_B 11

Veterans Hwy



Notes:

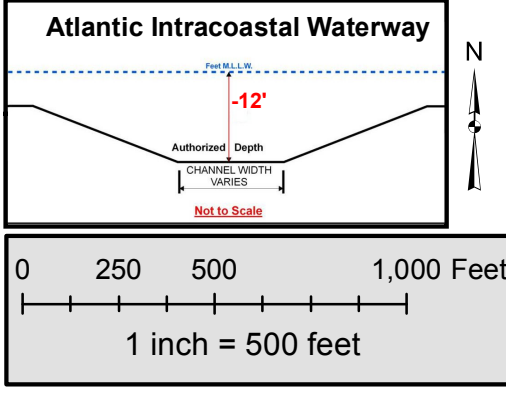
- Soundings are expressed in positive feet and tenths and are referenced the Mean Lower Low Water (MLLW) datum
- Project surveyed with USACE survey vessels equipped with GPS positioning and hydrographic survey equipment that meets USACE Navigation and Dredging standards for soft bottom hydrographic surveys.
- Soundings are calibrated to tide gauges that are set to MLLW and referenced to published benchmarks
- Horizontal Datum: State Plane NAD-83 SC-3900 Intl Feet
- Project was designed by the Charleston District of the U.S. Army Corps of Engineers. The initials or signatures and registration designations of individuals appear on these project documents within the scope of their employment by ER 1110-1-8152
- Maps and associated information represents the result of surveys made on the date indicated and can only be considered as indicating the general condition existing at that time. These conditions are subject to rapid change due to shoaling events. A prudent mariner should not rely exclusively on the information provided here
- Aids to Navigation obtained from the U.S. Coast Guard Light List



Survey Area: Atlantic Intracoastal Waterway - Little River to Bucksport	
Survey Date:	Dec. 2012
Survey Crew:	USACE Hydro Survey Team
Survey File Name:	20121200_ICW_LRWB_SB_CS
Imagery/Background:	2011 NRCS NAIP Imagery RGB
Mapped By:	C. Brewer

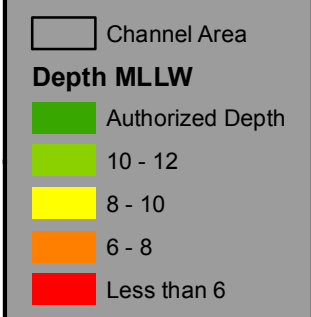
AIWW L_B 12

Grande Dunes Blvd



Notes:

- Soundings are expressed in positive feet and tenths and are referenced the Mean Lower Low Water (MLLW) datum
- Project surveyed with USACE survey vessels equipped with GPS positioning and hydrographic survey equipment that meets USACE Navigation and Dredging standards for soft bottom hydrographic surveys.
- Soundings are calibrated to tide gauges that are set to MLLW and referenced to published benchmarks
- Horizontal Datum: State Plane NAD-83 SC-3900 Int'l Feet
- Project was designed by the Charleston District of the U.S. Army Corps of Engineers. The initials or signatures and registration designations of individuals appear on these project documents within the scope of their employment by ER 1110-1-8152
- Maps and associated information represents the result of surveys made on the date indicated and can only be considered as indicating the general condition existing at that time. These conditions are subject to rapid change due to shoaling events. A prudent mariner should not rely exclusively on the information provided here
- Aids to Navigation obtained from the U.S. Coast Guard Light List

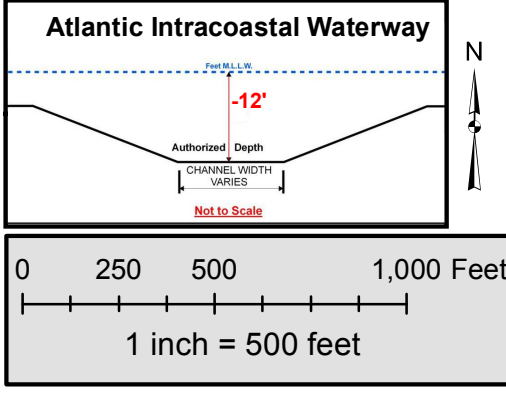
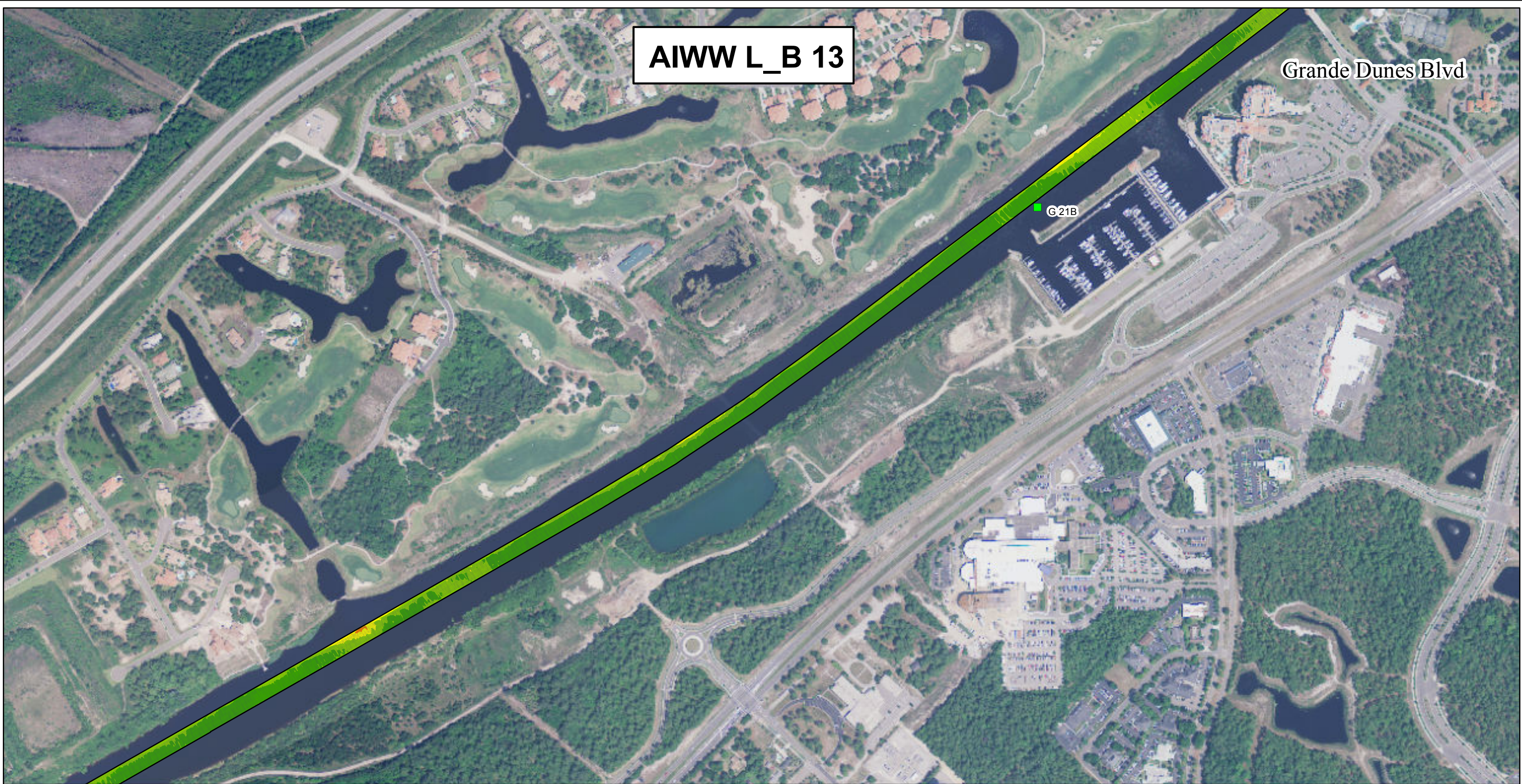


Survey Area: Atlantic Intracoastal Waterway - Little River to Bucksport	
Survey Date:	Dec. 2012
Survey Crew:	USACE Hydro Survey Team
Survey File Name:	20121200_ICW_LRWB_SB_CS
Imagery/Background:	2011 NRCS NAIP Imagery RGB
Mapped By:	C. Brewer

AIWW L_B 13

Grande Dunes Blvd

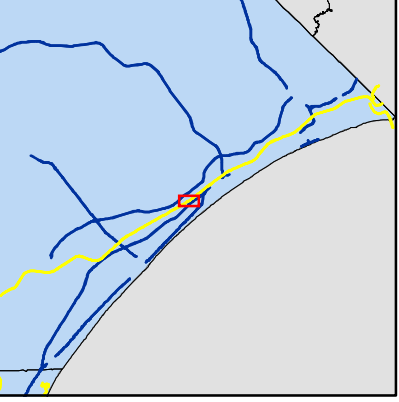
G21B



Notes:

- Soundings are expressed in positive feet and tenths and are referenced the Mean Lower Low Water (MLLW) datum
- Project surveyed with USACE survey vessels equipped with GPS positioning and hydrographic survey equipment that meets USACE Navigation and Dredging standards for soft bottom hydrographic surveys.
- Soundings are calibrated to tide gauges that are set to MLLW and referenced to published benchmarks
- Horizontal Datum: State Plane NAD-83 SC-3900 Intl Feet
- Project was designed by the Charleston District of the U.S. Army Corps of Engineers. The initials or signatures and registration designations of individuals appear on these project documents within the scope of their employment by ER 1110-1-8152
- Maps and associated information represents the result of surveys made on the date indicated and can only be considered as indicating the general condition existing at that time. These conditions are subject to rapid change due to shoaling events. A prudent mariner should not rely exclusively on the information provided here
- Aids to Navigation obtained from the U.S. Coast Guard Light List

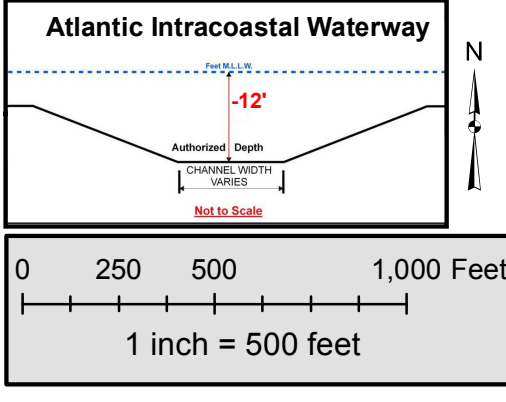
	Channel Area
Depth MLLW	
	Authorized Depth
	10 - 12
	8 - 10
	6 - 8
	Less than 6



Survey Area: Atlantic Intracoastal Waterway - Little River to Bucksport	
Survey Date:	Dec. 2012
Survey Crew:	USACE Hydro Survey Team
Survey File Name:	20121200_ICW_LRWB_SB_CS
Imagery/Background:	2011 NRCS NAIP Imagery RGB
Mapped By:	C. Brewer

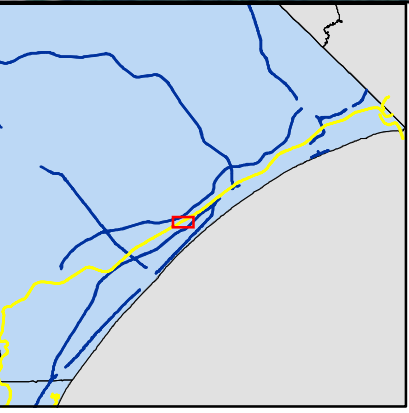
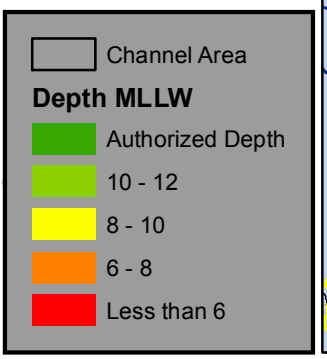
AIWW L_B 14

Robert M Grissom Pkwy



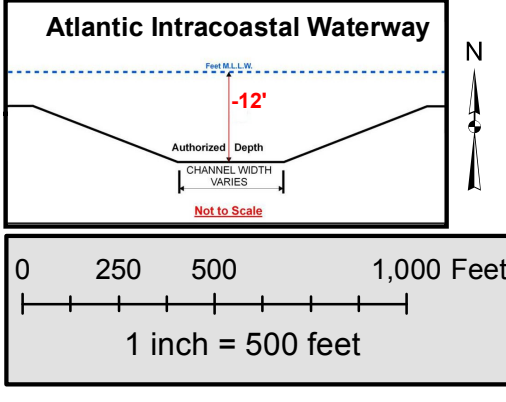
Notes:

- Soundings are expressed in positive feet and tenths and are referenced the Mean Lower Low Water (MLLW) datum
- Project surveyed with USACE survey vessels equipped with GPS positioning and hydrographic survey equipment that meets USACE Navigation and Dredging standards for soft bottom hydrographic surveys.
- Soundings are calibrated to tide gauges that are set to MLLW and referenced to published benchmarks
- Horizontal Datum: State Plane NAD-83 SC-3900 Int'l Feet
- Project was designed by the Charleston District of the U.S. Army Corps of Engineers. The initials or signatures and registration designations of individuals appear on these project documents within the scope of their employment by ER 1110-1-8152
- Maps and associated information represents the result of surveys made on the date indicated and can only be considered as indicating the general condition existing at that time. These conditions are subject to rapid change due to shoaling events. A prudent mariner should not rely exclusively on the information provided here
- Aids to Navigation obtained from the U.S. Coast Guard Light List



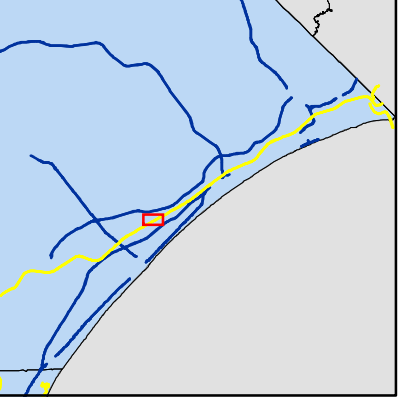
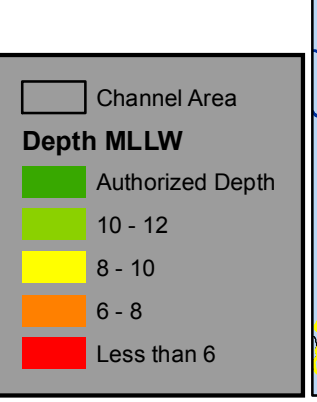
Survey Area: Atlantic Intracoastal Waterway - Little River to Bucksport	
Survey Date:	Dec. 2012
Survey Crew:	USACE Hydro Survey Team
Survey File Name:	20121200_ICW_LRWB_SB_CS
Imagery/Background:	2011 NRCS NAIP Imagery RGB
Mapped By:	C. Brewer

AIWW L_B 15



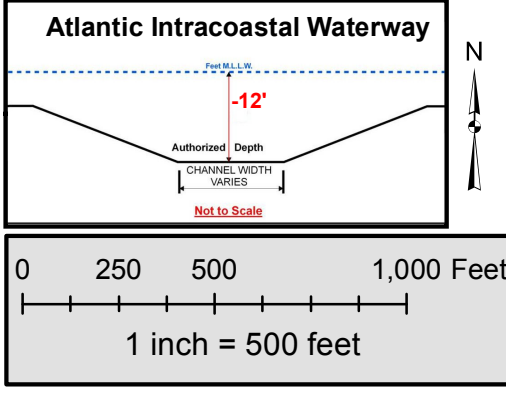
Notes:

- Soundings are expressed in positive feet and tenths and are referenced the Mean Lower Low Water (MLLW) datum
- Project surveyed with USACE survey vessels equipped with GPS positioning and hydrographic survey equipment that meets USACE Navigation and Dredging standards for soft bottom hydrographic surveys.
- Soundings are calibrated to tide gauges that are set to MLLW and referenced to published benchmarks
- Horizontal Datum: State Plane NAD-83 SC-3900 Intl Feet
- Project was designed by the Charleston District of the U.S. Army Corps of Engineers. The initials or signatures and registration designations of individuals appear on these project documents within the scope of their employment by ER 1110-1-8152
- Maps and associated information represents the result of surveys made on the date indicated and can only be considered as indicating the general condition existing at that time. These conditions are subject to rapid change due to shoaling events. A prudent mariner should not rely exclusively on the information provided here
- Aids to Navigation obtained from the U.S. Coast Guard Light List



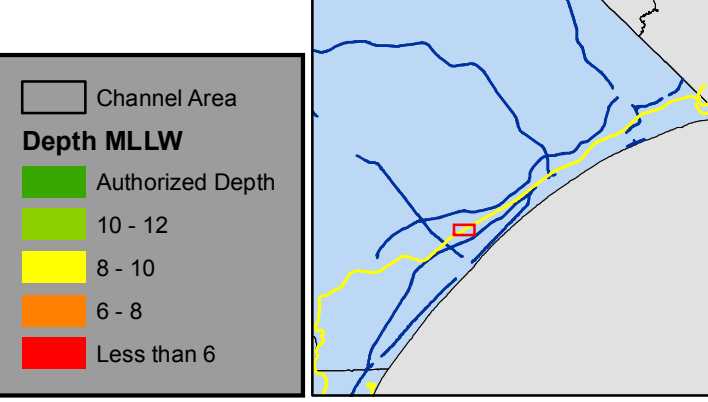
Survey Area: Atlantic Intracoastal Waterway - Little River to Bucksport	
Survey Date:	Dec. 2012
Survey Crew:	USACE Hydro Survey Team
Survey File Name:	20121200_ICW_LRWB_SB_CS
Imagery/Background:	2011 NRCS NAIP Imagery RGB
Mapped By:	C. Brewer

AIWW L_B 16



Notes:

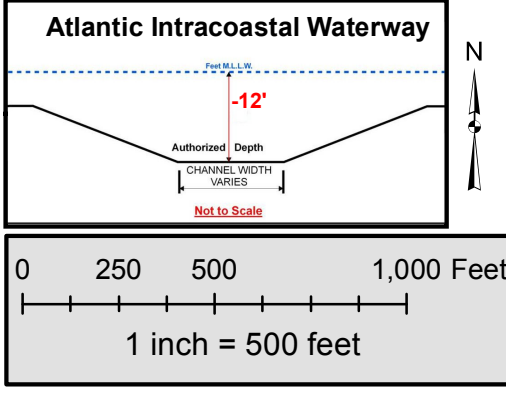
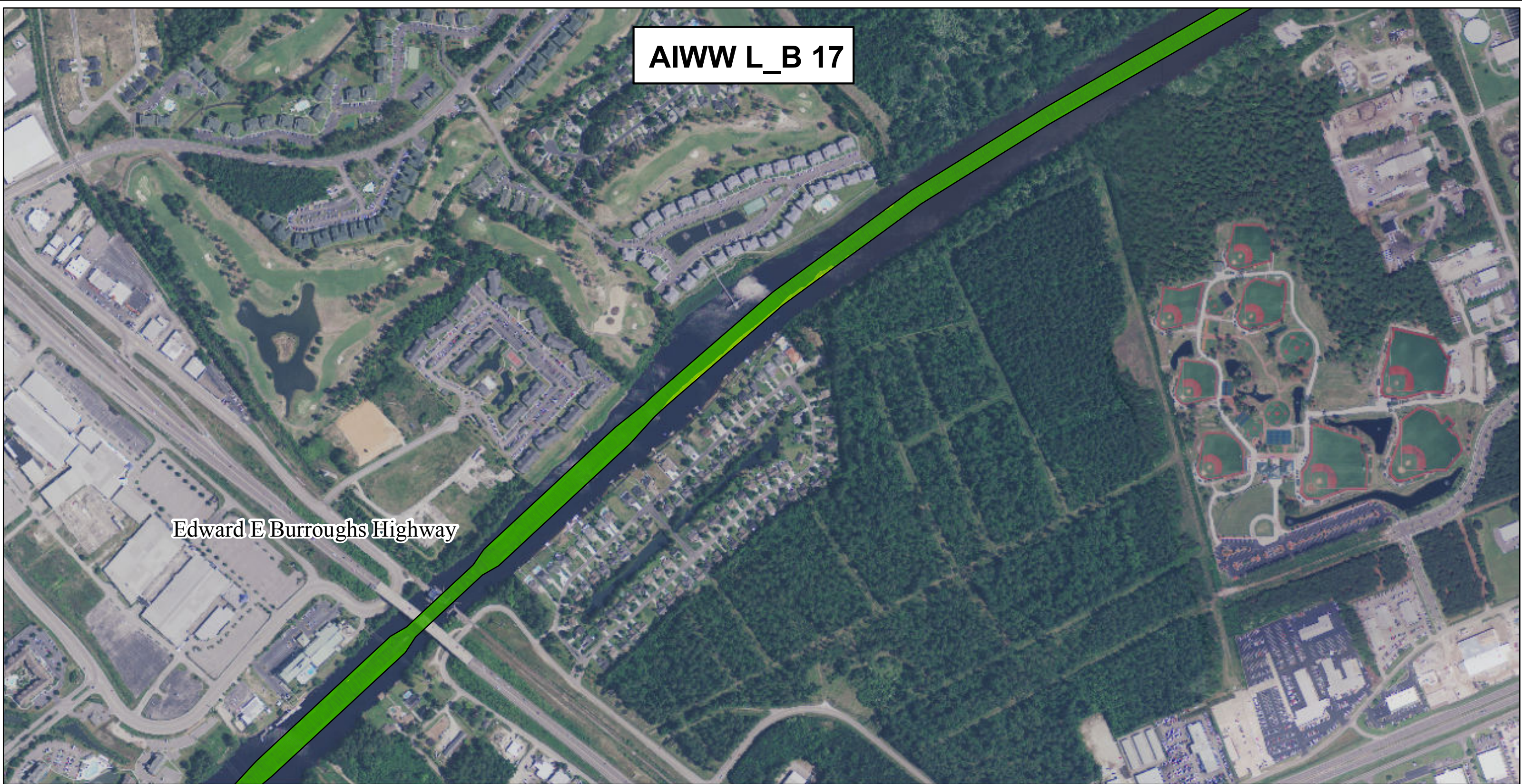
- Soundings are expressed in positive feet and tenths and are referenced the Mean Lower Low Water (MLLW) datum
- Project surveyed with USACE survey vessels equipped with GPS positioning and hydrographic survey equipment that meets USACE Navigation and Dredging standards for soft bottom hydrographic surveys.
- Soundings are calibrated to tide gauges that are set to MLLW and referenced to published benchmarks
- Horizontal Datum: State Plane NAD-83 SC-3900 Int'l Feet
- Project was designed by the Charleston District of the U.S. Army Corps of Engineers. The initials or signatures and registration designations of individuals appear on these project documents within the scope of their employment by ER 1110-1-8152
- Maps and associated information represents the result of surveys made on the date indicated and can only be considered as indicating the general condition existing at that time. These conditions are subject to rapid change due to shoaling events. A prudent mariner should not rely exclusively on the information provided here
- Aids to Navigation obtained from the U.S. Coast Guard Light List



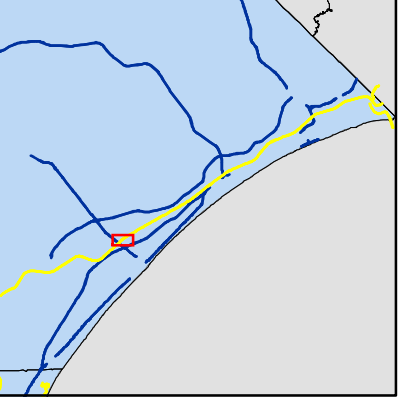
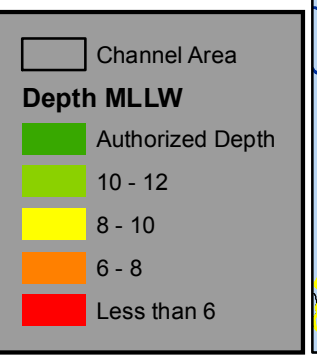
Survey Area: Atlantic Intracoastal Waterway - Little River to Bucksport	
Survey Date:	Dec. 2012
Survey Crew:	USACE Hydro Survey Team
Survey File Name:	20121200_ICW_LRWB_SB_CS
Imagery/Background:	2011 NRCS NAIP Imagery RGB
Mapped By:	C. Brewer

AIWW L_B 17

Edward E Burroughs Highway

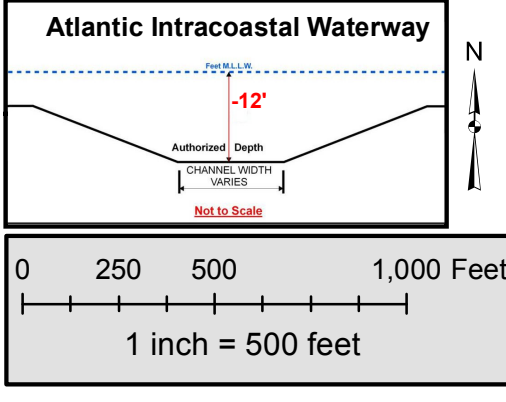


Notes:
 - Soundings are expressed in positive feet and tenths and are referenced the Mean Lower Low Water (MLLW) datum
 - Project surveyed with USACE survey vessels equipped with GPS positioning and hydrographic survey equipment that meets USACE Navigation and Dredging standards for soft bottom hydrographic surveys.
 - Soundings are calibrated to tide gauges that are set to MLLW and referenced to published benchmarks
 - Horizontal Datum: State Plane NAD-83 SC-3900 Intl Feet
 - Project was designed by the Charleston District of the U.S. Army Corps of Engineers. The initials or signatures and registration designations of individuals appear on these project documents within the scope of their employment by ER 1110-1-8152
 - Maps and associated information represents the result of surveys made on the date indicated and can only be considered as indicating the general condition existing at that time. These conditions are subject to rapid change due to shoaling events. A prudent mariner should not rely exclusively on the information provided here
 - Aids to Navigation obtained from the U.S. Coast Guard Light List



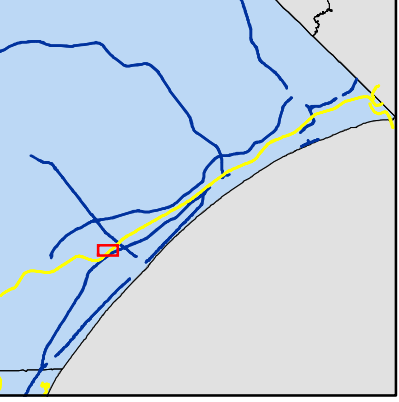
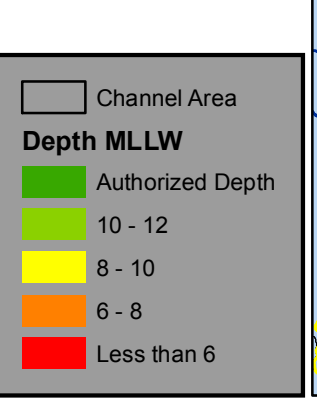
Survey Area: Atlantic Intracoastal Waterway - Little River to Bucksport	
Survey Date:	Dec. 2012
Survey Crew:	USACE Hydro Survey Team
Survey File Name:	20121200_ICW_LRWB_SB_CS
Imagery/Background:	2011 NRCS NAIP Imagery RGB
Mapped By:	C. Brewer

AIWW L_B 18



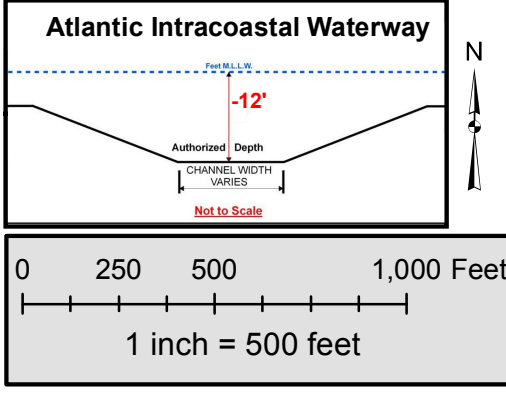
Notes:

- Soundings are expressed in positive feet and tenths and are referenced the Mean Lower Low Water (MLLW) datum
- Project surveyed with USACE survey vessels equipped with GPS positioning and hydrographic survey equipment that meets USACE Navigation and Dredging standards for soft bottom hydrographic surveys.
- Soundings are calibrated to tide gauges that are set to MLLW and referenced to published benchmarks
- Horizontal Datum: State Plane NAD-83 SC-3900 Intl Feet
- Project was designed by the Charleston District of the U.S. Army Corps of Engineers. The initials or signatures and registration designations of individuals appear on these project documents within the scope of their employment by ER 1110-1-8152
- Maps and associated information represents the result of surveys made on the date indicated and can only be considered as indicating the general condition existing at that time. These conditions are subject to rapid change due to shoaling events. A prudent mariner should not rely exclusively on the information provided here
- Aids to Navigation obtained from the U.S. Coast Guard Light List



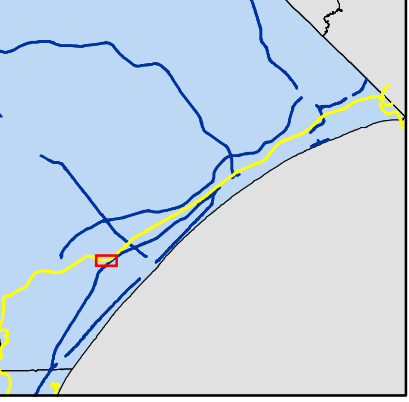
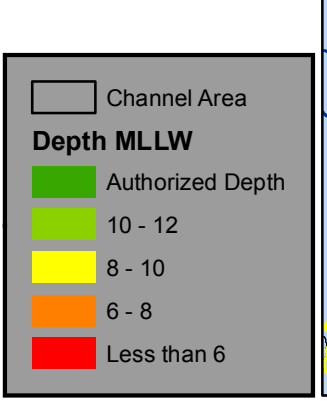
Survey Area: Atlantic Intracoastal Waterway - Little River to Bucksport	
Survey Date:	Dec. 2012
Survey Crew:	USACE Hydro Survey Team
Survey File Name:	20121200_ICW_LRWB_SB_CS
Imagery/Background:	2011 NRCS NAIP Imagery RGB
Mapped By:	C. Brewer

AIWW L_B 19



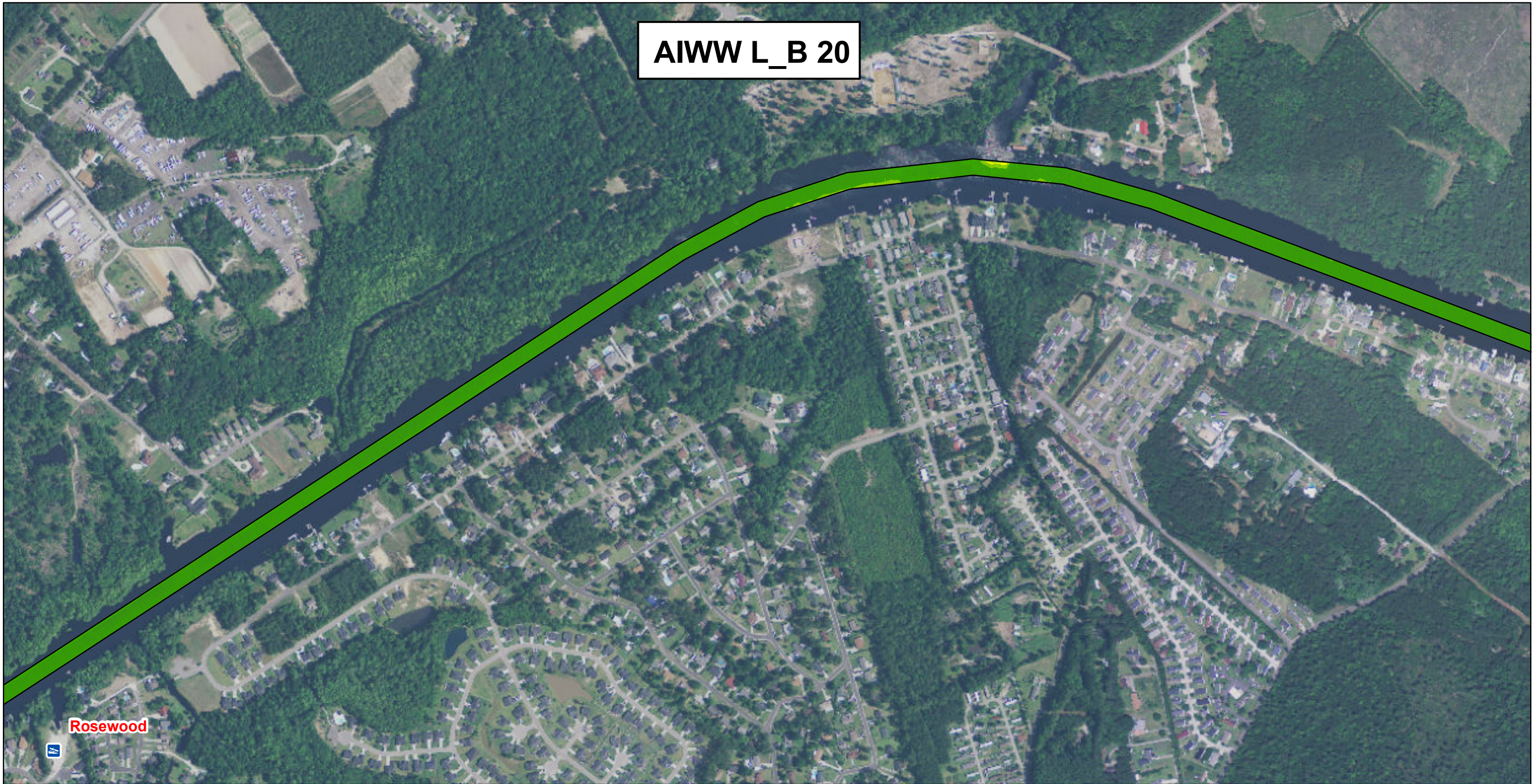
Notes:

- Soundings are expressed in positive feet and tenths and are referenced the Mean Lower Low Water (MLLW) datum
- Project surveyed with USACE survey vessels equipped with GPS positioning and hydrographic survey equipment that meets USACE Navigation and Dredging standards for soft bottom hydrographic surveys.
- Soundings are calibrated to tide gauges that are set to MLLW and referenced to published benchmarks
- Horizontal Datum: State Plane NAD-83 SC-3900 Int'l Feet
- Project was designed by the Charleston District of the U.S. Army Corps of Engineers. The initials or signatures and registration designations of individuals appear on these project documents within the scope of their employment by ER 1110-1-8152
- Maps and associated information represents the result of surveys made on the date indicated and can only be considered as indicating the general condition existing at that time. These conditions are subject to rapid change due to shoaling events. A prudent mariner should not rely exclusively on the information provided here
- Aids to Navigation obtained from the U.S. Coast Guard Light List

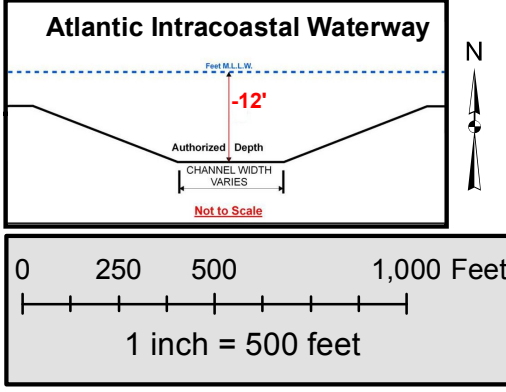


Survey Area: Atlantic Intracoastal Waterway - Little River to Bucksport	
Survey Date:	Dec. 2012
Survey Crew:	USACE Hydro Survey Team
Survey File Name:	20121200_ICW_LRWB_SB_CS
Imagery/Background:	2011 NRCS NAIP Imagery RGB
Mapped By:	C. Brewer

AIWW L_B 20

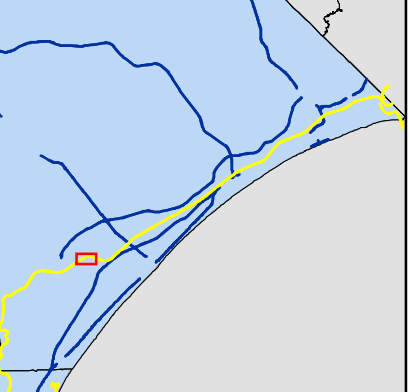
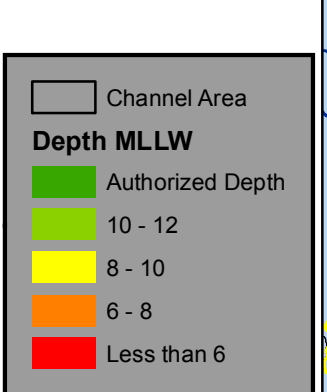


Rosewood



Notes:

- Soundings are expressed in positive feet and tenths and are referenced the Mean Lower Low Water (MLLW) datum
- Project surveyed with USACE survey vessels equipped with GPS positioning and hydrographic survey equipment that meets USACE Navigation and Dredging standards for soft bottom hydrographic surveys.
- Soundings are calibrated to tide gauges that are set to MLLW and referenced to published benchmarks
- Horizontal Datum: State Plane NAD-83 SC-3900 Intl Feet
- Project was designed by the Charleston District of the U.S. Army Corps of Engineers. The initials or signatures and registration designations of individuals appear on these project documents within the scope of their employment by ER 1110-1-8152
- Maps and associated information represents the result of surveys made on the date indicated and can only be considered as indicating the general condition existing at that time. These conditions are subject to rapid change due to shoaling events. A prudent mariner should not rely exclusively on the information provided here
- Aids to Navigation obtained from the U.S. Coast Guard Light List



Survey Area: Atlantic Intracoastal Waterway - Little River to Bucksport	
Survey Date:	Dec. 2012
Survey Crew:	USACE Hydro Survey Team
Survey File Name:	20121200_ICW_LRWB_SB_CS
Imagery/Background:	2011 NRCS NAIP Imagery RGB
Mapped By:	C. Brewer

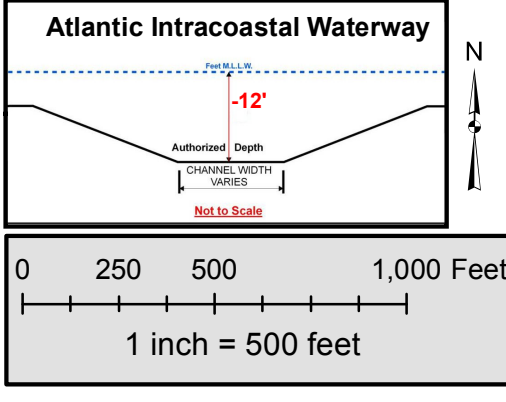
AIWW L_B 21



Benjamin E Thrillkill Bridge

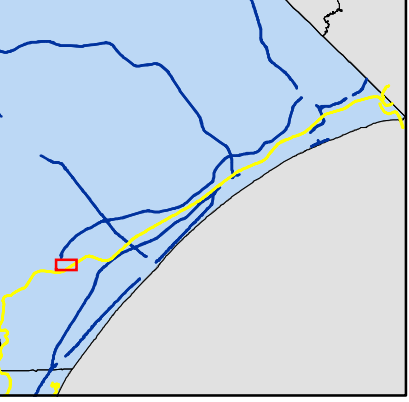
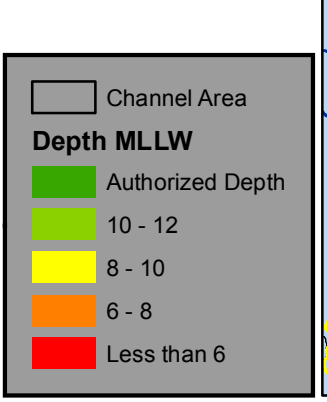
Highway 544

Duck Pond Rd Bridge



Notes:

- Soundings are expressed in positive feet and tenths and are referenced the Mean Lower Low Water (MLLW) datum
- Project surveyed with USACE survey vessels equipped with GPS positioning and hydrographic survey equipment that meets USACE Navigation and Dredging standards for soft bottom hydrographic surveys.
- Soundings are calibrated to tide gauges that are set to MLLW and referenced to published benchmarks
- Horizontal Datum: State Plane NAD-83 SC-3900 Int'l Feet
- Project was designed by the Charleston District of the U.S. Army Corps of Engineers. The initials or signatures and registration designations of individuals appear on these project documents within the scope of their employment by ER 1110-1-8152
- Maps and associated information represents the result of surveys made on the date indicated and can only be considered as indicating the general condition existing at that time. These conditions are subject to rapid change due to shoaling events. A prudent mariner should not rely exclusively on the information provided here
- Aids to Navigation obtained from the U.S. Coast Guard Light List



Survey Area: Atlantic Intracoastal Waterway - Little River to Bucksport	
Survey Date:	Dec. 2012
Survey Crew:	USACE Hydro Survey Team
Survey File Name:	20121200_ICW_LRWB_SB_CS
Imagery/Background:	2011 NRCS NAIP Imagery RGB
Mapped By:	C. Brewer