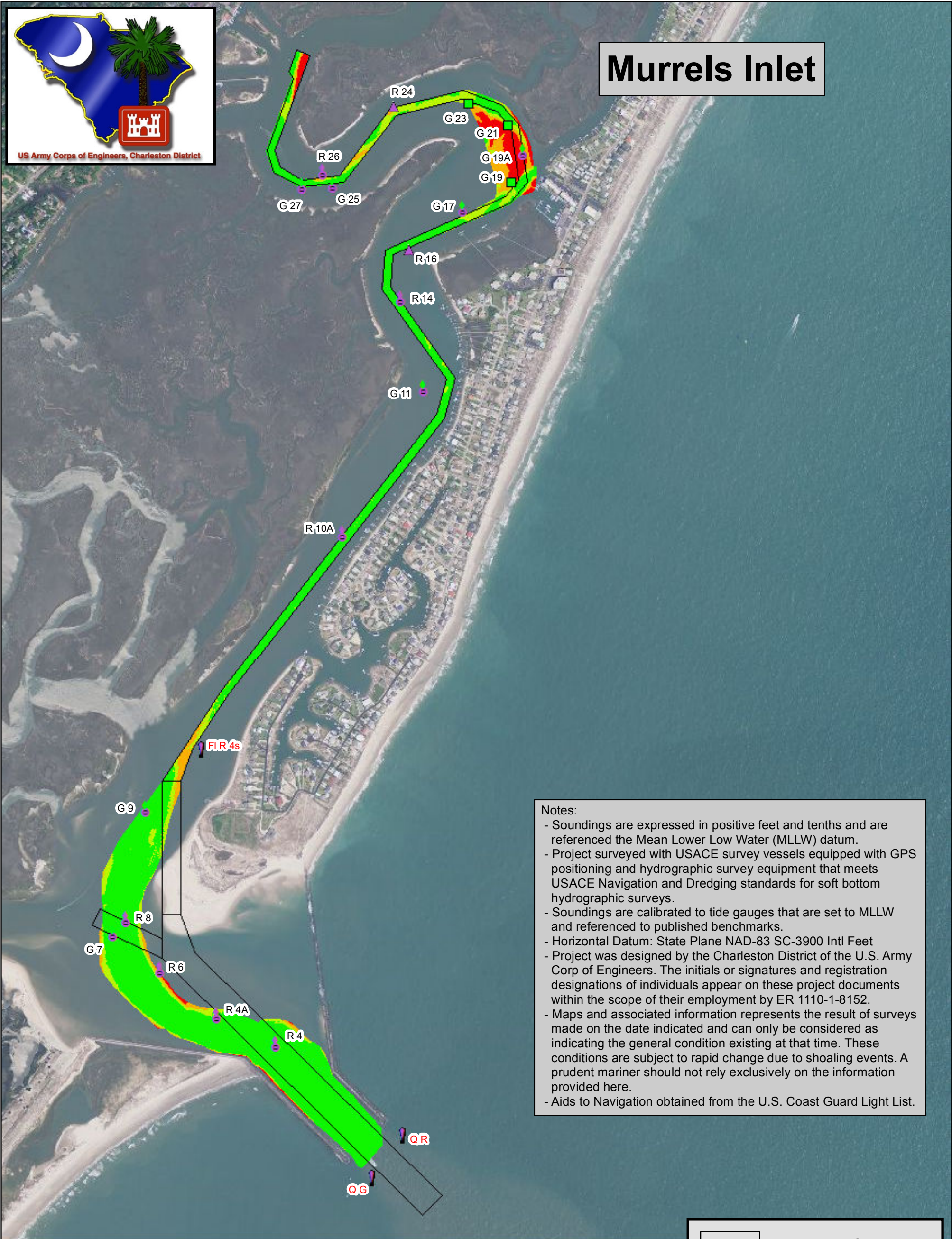




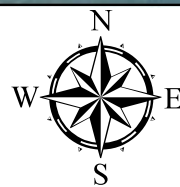
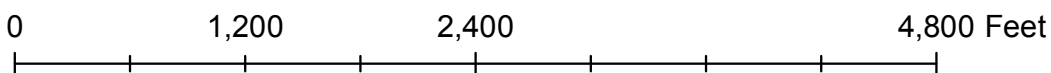
# Murrells Inlet



**Notes:**

- Soundings are expressed in positive feet and tenths and are referenced the Mean Lower Low Water (MLLW) datum.
- Project surveyed with USACE survey vessels equipped with GPS positioning and hydrographic survey equipment that meets USACE Navigation and Dredging standards for soft bottom hydrographic surveys.
- Soundings are calibrated to tide gauges that are set to MLLW and referenced to published benchmarks.
- Horizontal Datum: State Plane NAD-83 SC-3900 Intl Feet
- Project was designed by the Charleston District of the U.S. Army Corp of Engineers. The initials or signatures and registration designations of individuals appear on these project documents within the scope of their employment by ER 1110-1-8152.
- Maps and associated information represents the result of surveys made on the date indicated and can only be considered as indicating the general condition existing at that time. These conditions are subject to rapid change due to shoaling events. A prudent mariner should not rely exclusively on the information provided here.
- Aids to Navigation obtained from the U.S. Coast Guard Light List.

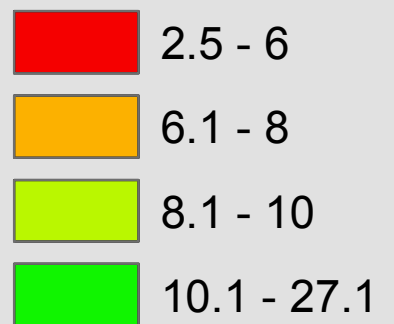
1 inch = 1,000 feet



Federal Channel

## Murrells Inlet

### Depth FT MLLW



**US Army Corps  
Of Engineers®  
Charleston District**

|                                    |                          |
|------------------------------------|--------------------------|
| <b>Survey Area:</b> Murrells Inlet |                          |
| <b>Survey Date:</b>                | 2012-11-29               |
| <b>Survey Crew:</b>                | USACE Survey Crew        |
| <b>Survey File Name:</b>           | 20121120_29_ICR_MI_MB_CS |
| <b>Imagery/Background:</b>         | 2011 NAIP                |
| <b>Mapped By:</b>                  | Brewer                   |