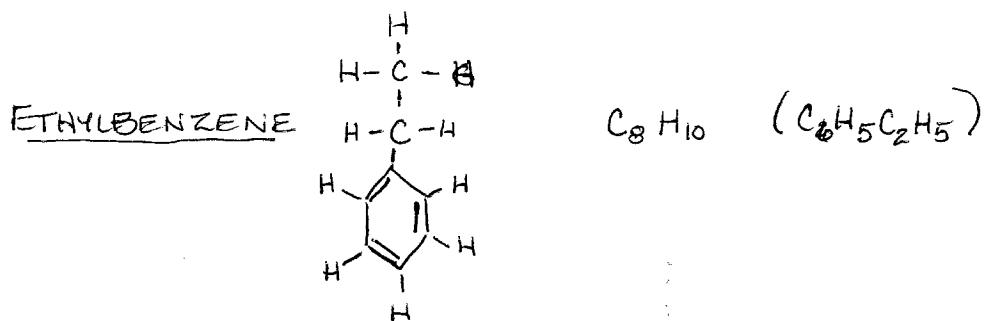


# TEST WELLS

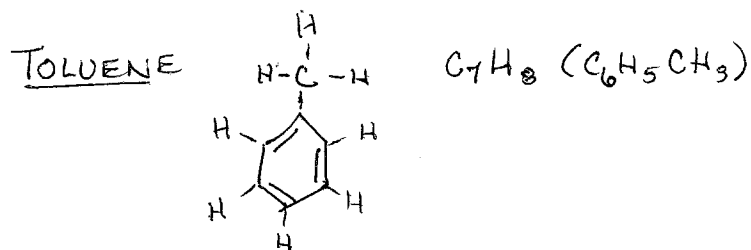
|  | ETHYL-BENZENE | UNITS = ppb<br>TOLUENE | BDL = 10 ppb<br>XYLENE | OTHERS   |
|--|---------------|------------------------|------------------------|--|
| LOCATION 5<br>(7/19/85) DEPTH 86-96 FT | 4             | 9                      | 26                     | ACETONE 6 ppb<br>ETHYLHEXANOL 6 ppb  |
| DEPTH 126-136 FT                       | 4             | 8                      | 26                     | ACETONE 42 ppb<br>PENTANAL 15 ppb<br>C <sub>6</sub> H <sub>12</sub> O 8 ppb<br>HEPTANAL 6 ppb<br>PROPYLBENZENE 4 ppb |
| LOCATION 6 (7/25/85)<br>DEPTH 84-94    | 2             | 3                      | 13                     |  |

CLW

0000005901

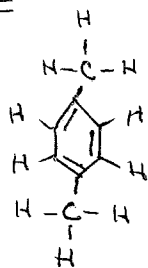


- FRACTIONAL DISTILLATION OF PETROLEUM

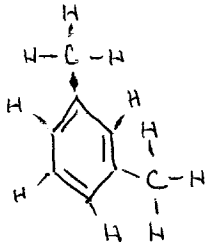


- FROM PETROLEUM

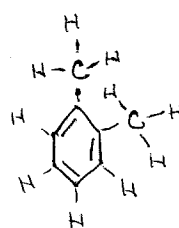
XYLENE



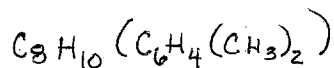
PARA-XYLENE



META-XYLENE

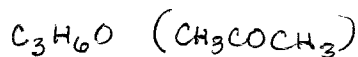
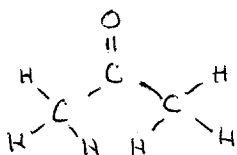


ORTHO-XYLENE (LEAST COMMON)



- FROM PETROLEUM

ACETONE

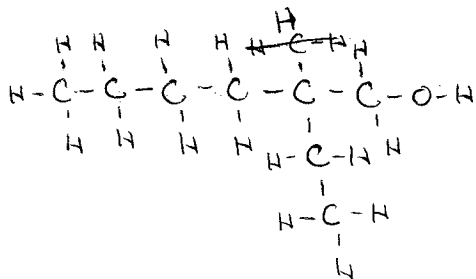
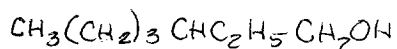


SOLVENT

CLW

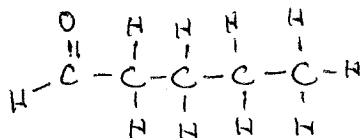
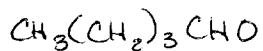
000005902

ETHYLHEXANOL (2-ETHYLHEXANOL, 2-ETHYLHEXYL ALCOHOL)



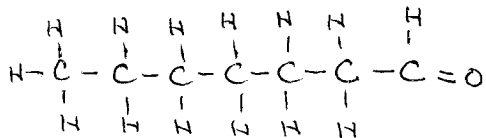
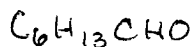
PLASTICIZER FOR PVC RESINS

PENTANAL (N-VALERALDEHYDE)

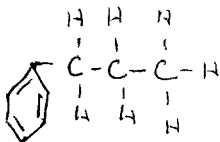


C<sub>6</sub>H<sub>12</sub>O (~~HEXANOL~~) (ALDEHYDE OR KETONE)

HEPTANAL (HEPTALDEHYDE)



PROPYLBENZENE (1-PHENYLPROPANE)



CLW

0000005903