



DEPARTMENT OF THE NAVY
HEADQUARTERS UNITED STATES MARINE CORPS
WASHINGTON, D.C. 20380

File
A 85
micom

IN REPLY REFER TO

11000
LFF-1

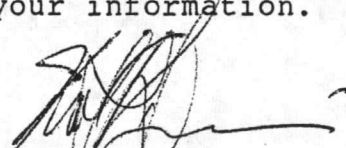
17 DEC 1984

From: Commandant of the Marine Corps
To: Distribution List

Subj: FISCAL YEAR 1985 MILITARY CONSTRUCTION PROGRAM AS APPROVED
BY CONGRESS

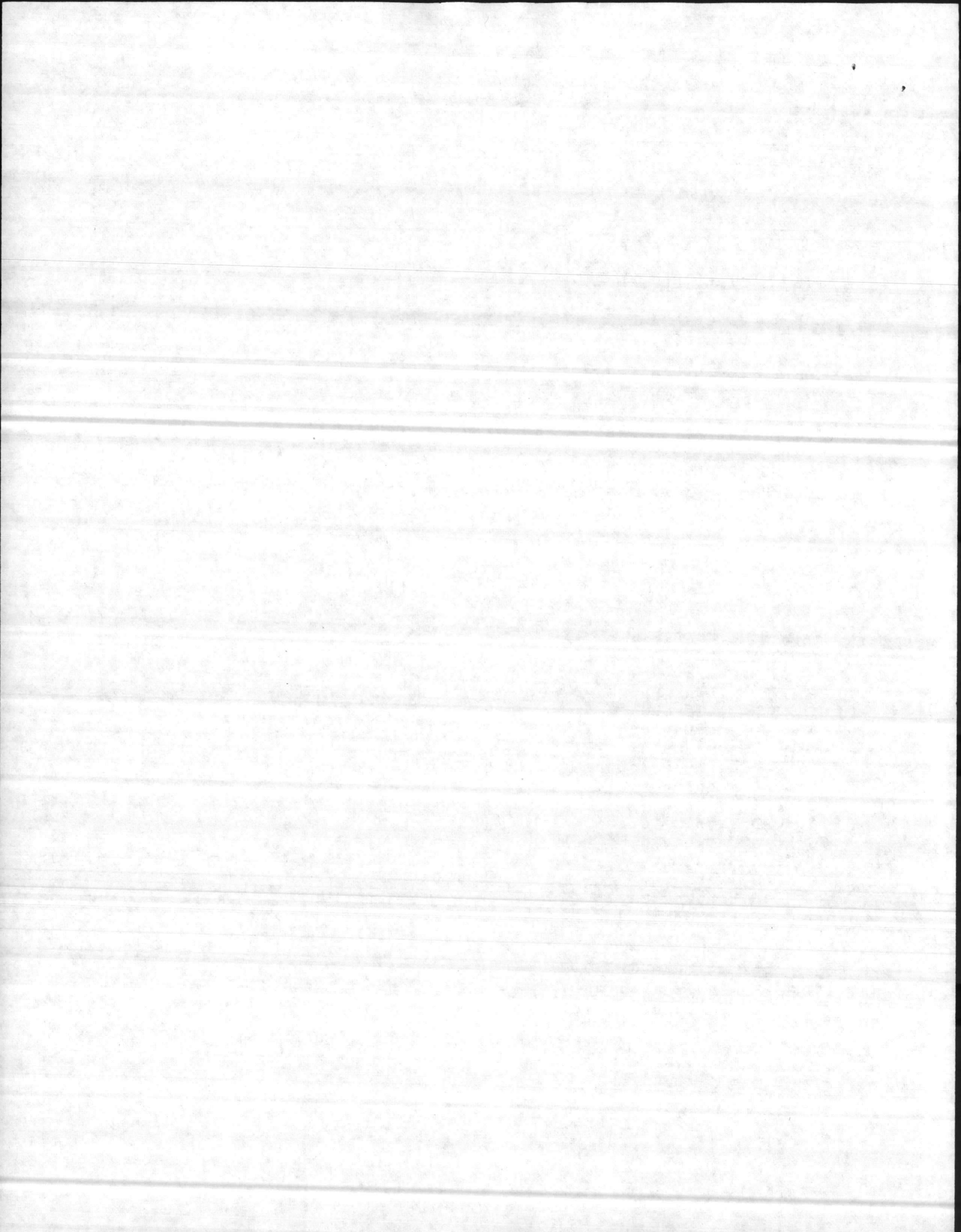
Encl: (1) Marine Corps As Enacted Index
(2) Marine Corps Program Year Listing (1524 Report)
dtd 15 Nov 84
(3) As Enacted MCON DD Forms 1391

1. Enclosures (1) and (2) and portions of enclosure (3) pertaining to your activity are forwarded for your information.


R. SISSON
By direction

DISTRIBUTION LIST:
CG MCDEC Quantico
CG MCAS Cherry Point
CG MCRD/CG WRR San Diego
CG MCAS El Toro
CG MCB Camp Lejeune
CG MCB Camp Butler
CG MCB Camp Pendleton
CG MCAF Pendleton
CG MCLB Barstow
CG MCRD Parris Island
CG MCAGCC Twentynine Palms
CO MCAS Beaufort
CO MCAS Iwakuni
CO MCAS Kaneohe Bay
CO MCAS (H) New River
CO MCAS Yuma
CO Camp H. M. Smith
CO MCAS (H) Tustin
CO Marine Barracks, Washington, DC

Copy to:
COMCABEAST
COMCABWEST

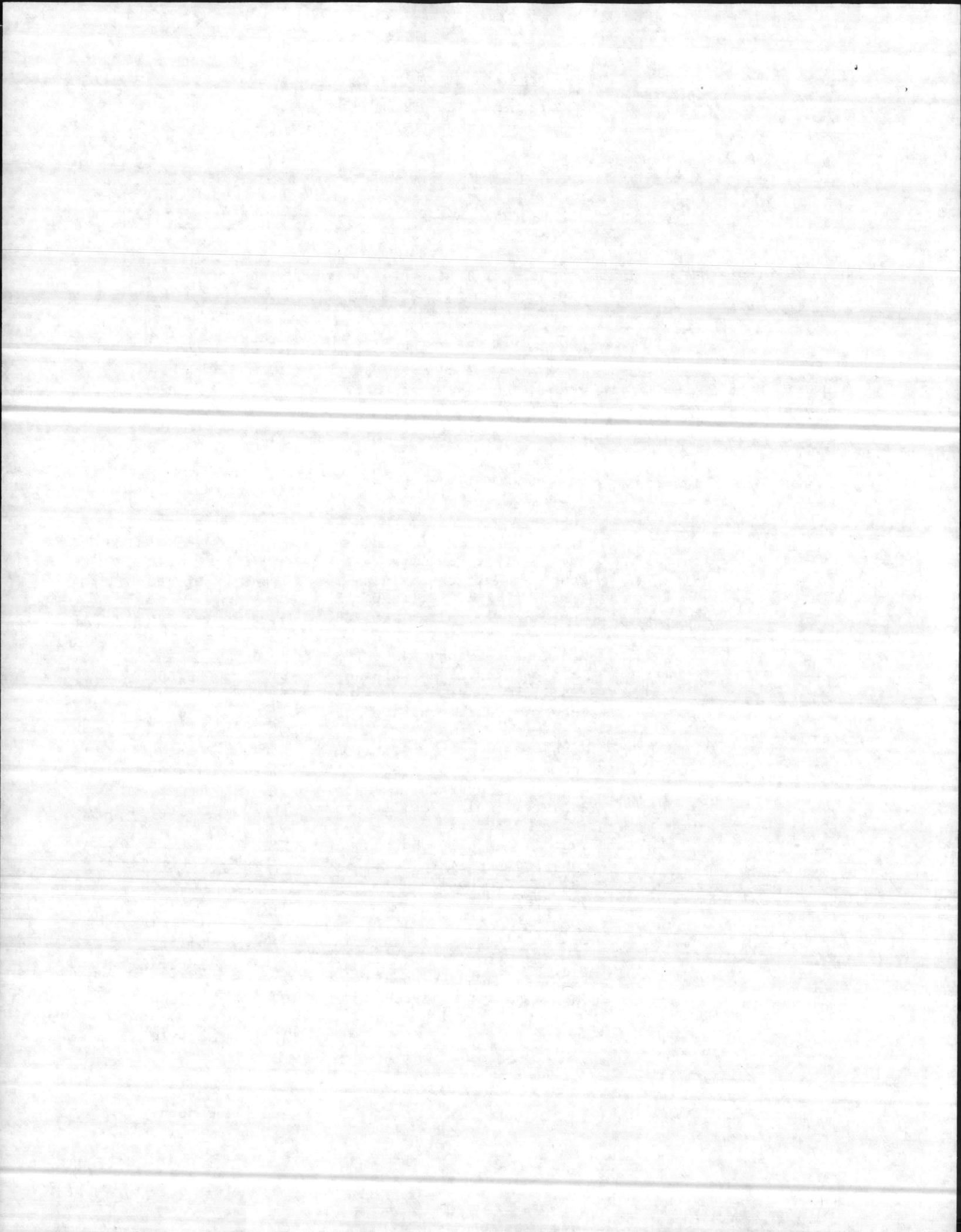


FY 1985 MILITARY CONSTRUCTION PROGRAM
MARINE CORPS AS ENACTED INDEX
 (All Dollars in Thousands)

12 OCT 84

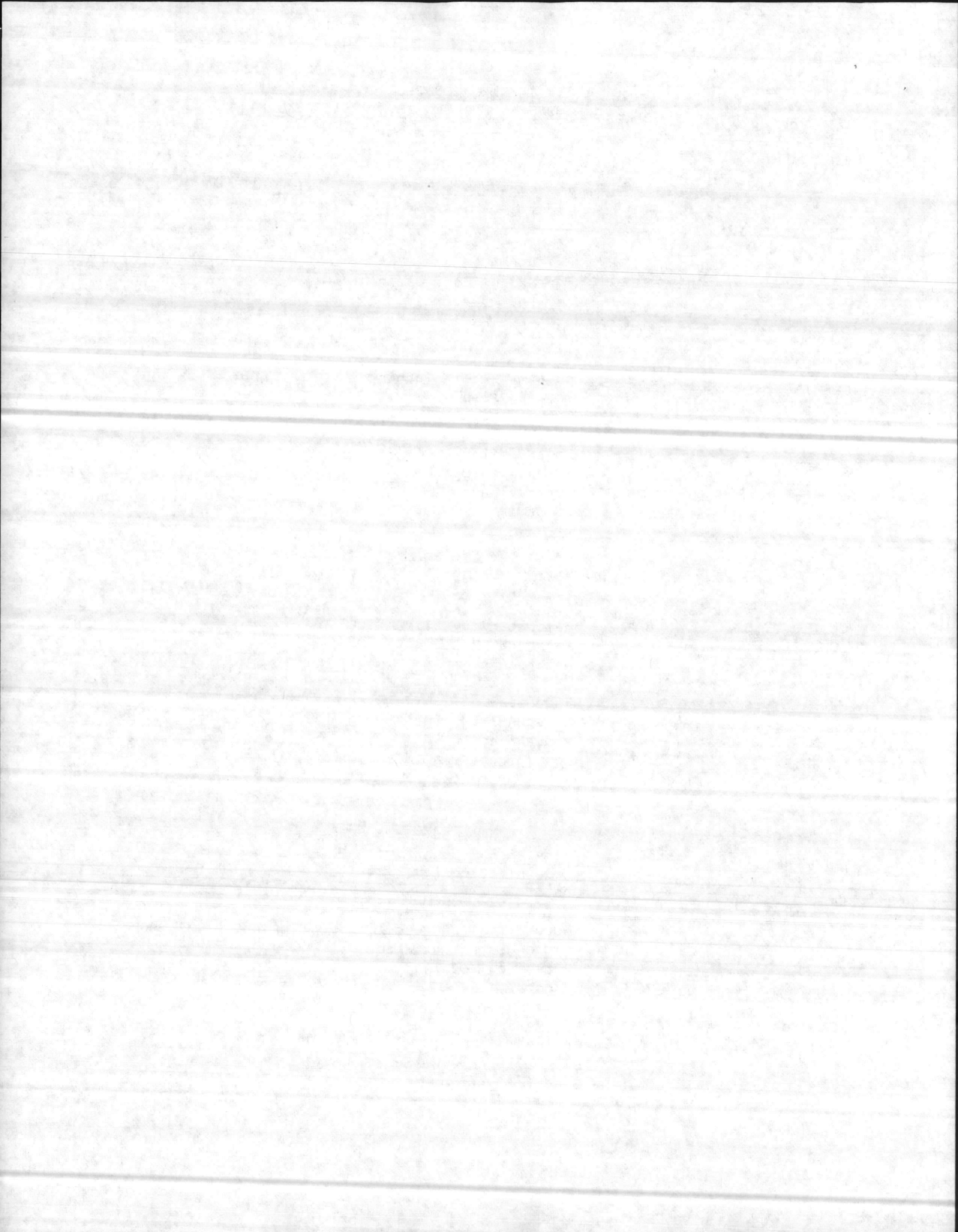
<u>INSTALLATION/ LOCATION</u>	<u>PROJ. NO.</u>	<u>PROJECT TITLE</u>	<u>AUTH. AMOUNT</u>	<u>APPRO. AMOUNT</u>	<u>1391 PAGE NUMBER</u>
MCLB Barstow, CA	104	Security Warehouse	\$ 5,670	\$ 5,670	10
		Subtotal	5,670	5,670	
MCAS Beaufort, SC	320	Operational Trainer Facility	760	760	523
	205	Construction and Weight Handling Equipment Shop	1,950	1,950	12
	338	Oil Spill Prevention	780	780	515
		Subtotal	3,490	3,490	
MCB Camp Lejeune, NC	054	Combat Vehicle Maintenance Shop	2,190	2,190	14
	802	Division Headquarters	9,380	9,380	16
	624	Unaccompanied Enlisted Personnel Housing	16,800	16,800	18
	785	Water Treatment Facilities Improvements	8,000	8,000	20
		Subtotal	36,370	36,370	
MCB Camp Pendleton, CA	129	Fuel Storage Facility	3,340	3,340	22
	947	Mountain Warfare Training Facility (MWTC Bridgeport)	1,480	1,480	24
	472	Operational Trainer Facility (MCAF)	3,120	3,120	26
	241	Maintenance Hangar (MCAF)	4,700	4,700	28
	136	Tactical Vehicle Maintenance Facilities	8,500	8,500	30
	907	Tactical Vehicle Maintenance Facility	1,680	1,680	32
	939	Hazardous Waste Facilities	440	440	515
	868	Unaccompanied Enlisted Personnel Housing	23,900	23,000	34
	517	Enlisted Dining Facility Modernization	2,610	2,610	36
	437	Chapel, Religious Education, and Instructional Facility	2,360	2,360	38
	943	Child Care Center	2,202	2,200	40
		Subtotal	54,332	53,430	
MCAS Cherry Point, NC	782	Combat Aircraft Ordnance Loading Area	3,320	3,320	42
	865	Tactical Support Van Pads	1,490	1,490	44
	805	Unaccompanied Enlisted Personnel Housing	10,000	10,000	46
		Subtotal	14,810	14,810	

ENCL (1)



FY 1985 MILITARY CONSTRUCTION PROGRAM
 MARINE CORPS AS ENACTED INDEX (CONTINUED)
 (All Dollars in Thousands)

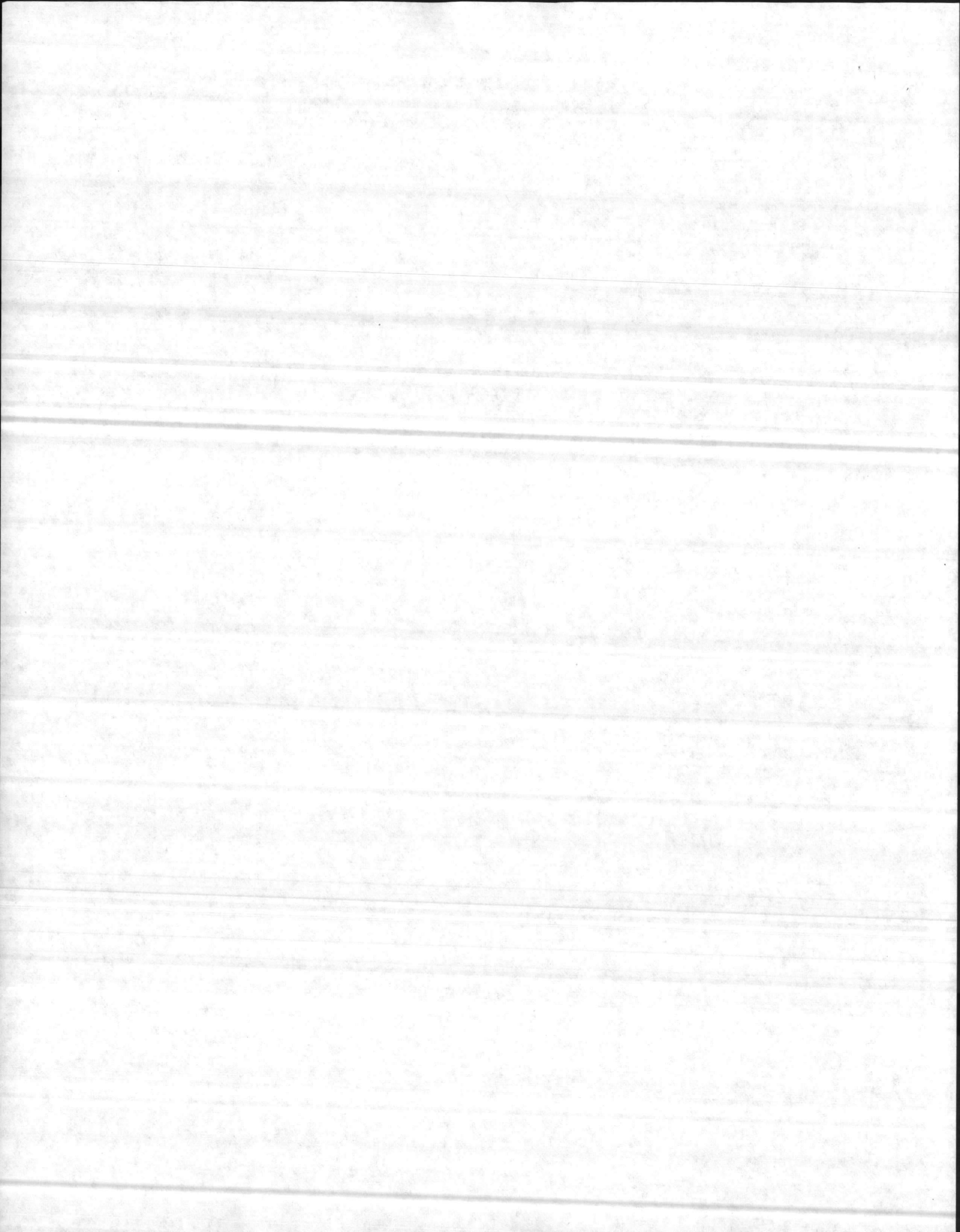
<u>INSTALLATION/ LOCATION</u>	<u>PROJ. NO.</u>	<u>PROJECT TITLE</u>	<u>AUTH. AMOUNT</u>	<u>APPRO. AMOUNT</u>	<u>1391 PAGE NUMBER</u>
MCAS El Toro, CA	277	Combat Aircraft Ordnance Loading Area	\$ 4,880	\$ 4,880	48
	375	Small Arms Range - Outdoor	680	680	523
	328	High Explosive Magazines	2,690	2,690	50
	048	Wing Headquarters	4,610	4,610	52
	404	Land Acquisition	4,750	3,500	54
		Subtotal	<u>17,610</u>	<u>16,360</u>	
MCAS Kaneohe Bay, HI	319	Combat Aircraft Ordnance Loading Area	2,440	2,440	56
	207	Unaccompanied Enlisted Personnel Housing Modernization	7,610	7,610	58
	043	Water Distribution System Improvements	6,490	6,490	60
		Subtotal	<u>16,540</u>	<u>16,540</u>	
MCAS New River, NC	358	Hazardous and Flammable Storehouse	340	340	523
		Subtotal	<u>340</u>	<u>340</u>	
Camp H.M. Smith Oahu, HI	090	Unaccompanied Enlisted Personnel Housing	1,910	1,910	62
		Subtotal	<u>1,910</u>	<u>1,910</u>	
MCRD Parris Island, SC	070	Unaccompanied Enlisted Personnel Housing Modernization	2,550	2,550	64
	139	Recruit Barracks Improvement	3,680	3,680	66
	204	Recruit Barracks	4,990	4,990	68
		Subtotal	<u>11,220</u>	<u>11,220</u>	
MCD&EC Quantico, VA	314	Unaccompanied Enlisted Personnel Housing Modernization	3,710	3,710	70
		Subtotal	<u>3,710</u>	<u>3,710</u>	
MCRD San Diego, CA	187	Recruit Training Facility	8,650	8,650	72
	210	Unaccompanied Enlisted Personnel Housing	9,920	9,500	74
		Subtotal	<u>18,570</u>	<u>18,150</u>	
MCAS Tustin, CA	150	Maintenance Hangar	13,200	13,200	76
	159	Engine Test Cell	1,140	1,140	78
	238	Oil Spill Prevention	710	710	516
		Subtotal	<u>15,050</u>	<u>15,050</u>	



FY 1985 MILITARY CONSTRUCTION PROGRAM
MARINE CORPS AS ENACTED INDEX (CONTINUED)
 (All Dollars in Thousands)

12 OCT 84

<u>INSTALLATION/ LOCATION</u>	<u>PROJ. NO.</u>	<u>PROJECT TITLE</u>	<u>AUTH. AMOUNT</u>	<u>APPRO. AMOUNT</u>	<u>1391 PAGE NUMBER</u>
MCAGCC Twentynine Palms, CA	297	Armory	\$ 1,100	\$ 1,100	80
	268	Ammunition Storage Facilities	4,830	4,830	82
	292	Battalion Headquarters	<u>1,900</u>	<u>1,900</u>	84
		Subtotal	<u>7,830</u>	<u>7,830</u>	
MARBARRACKS Washington, DC	002	Building Modernization	<u>2,540</u>	<u>2,540</u>	86
		Subtotal	<u>2,540</u>	<u>2,540</u>	
MCAS Yuma, AZ	177	Parachute and Survival Equipment Shop	790	790	524
	390	Missile Equipment Maintenance Shop	1,900	1,900	88
	114	Cold Storage Warehouse	660	660	524
	090	Unaccompanied Enlisted Personnel Housing	10,740	9,900	90
		Subtotal	<u>14,090</u>	<u>13,250</u>	
TOTAL - MARINE CORPS INSIDE THE UNITED STATES			<u>224,082</u>	<u>220,670</u>	



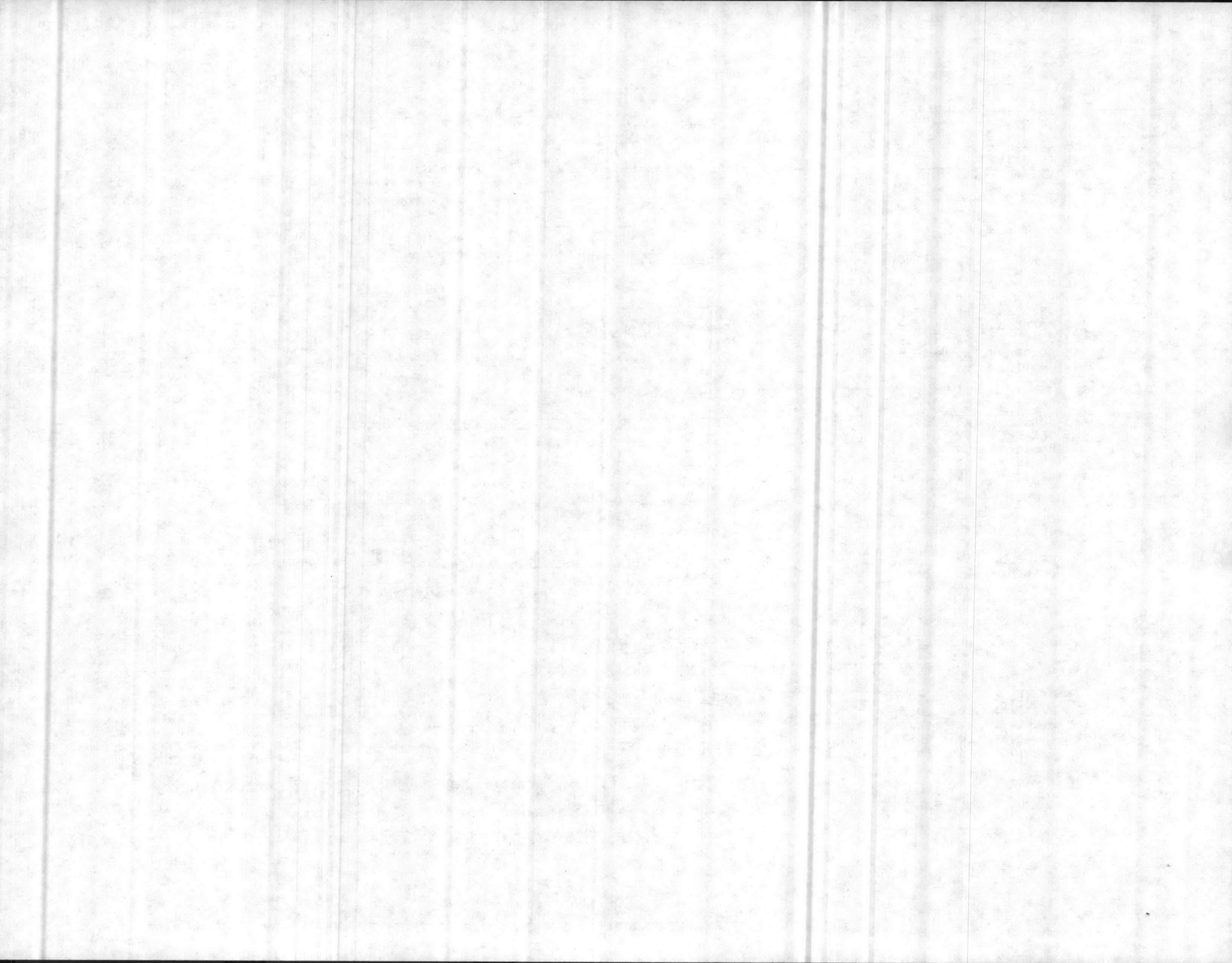
SEQ. NO. 398

(I-MCON PORTION)

MARINE CORPS PROGRAM YEAR LISTING

MC	PT	IC	ACTIVITY LOCATOR NAME	PROJECT DESCRIPTION	CATCD	QUANT	UN	BT	P/COST	E/COST	EY	UIC	PROJ
R	85	0T	CHERRY POINT NC MCAS	CHBT A/C ORD LOADING AREA	11656	0060300	SY	95	3320	3800	85	H0014600	782
R	85	0T	CHERRY POINT NC MCAS	TACTICAL SUP VAN PADS	11665	0013950	SY	95	1490	2100	84	H0014600	865
R	85	0T	EL TORO CA MCAS	COMBAT AC ORD LOAD AREA	11656		LS	95	4880	3000	86	H6005000	277
R	85	0T	IWAKUNI JAPAN MCAS	TACTICAL SUPPORT VAN PADS	11665	0030000	SY	95	4150	6000	85	H6261300	771
R	85	0T	KANEONE BAY HI MCAS	COMBAT AC ORD LOAD AREA	11656	0023840	SY	95	2440	1350	85	H0031800	319
IC TOTAL									16280	16250			
R	85	0W	TWENTYNINE PALMS CA MAGCO	ARMORY	14345	0006660	SP	95	1100	1600	84	H6739900	297
IC TOTAL									1100	1600			
R	85	1T	BEAUFORT S C MCAS	OPERATIONAL TRAINER PAC	17135	0020900	SP	95	760	1000	84	H6016900	320
R	85	0T	CAMP PENDLETON CA MCB	OPER TRAINER PAC (MCAF)	17135	0019820	SP	95	3120	3200	83	H0068100	472
R	85	0T	CAMP PENDLETON CA MCB	MTN WARFARE TRG PAC-BRIDGE	17120	0013780	SP	95	1480	3500	84	H0068100	947
R	85	0T	EL TORO CA MCAS	SMALL ARMS RANGE - OUTDOOR	17940	0000001	EA	95	680	910	83	H6005000	375
R	85	0T	SAN DIEGO CA MCRD	RECRUIT TRNG PAC	17110	0071200	SP	95	8650	5000	85	H0024300	187
IC TOTAL									14690	13610			
R	85	0G	CAMP PENDLETON CA MCB	MAINT HANGAR (MCAF)	21105	0037300	SP	95	4700	4400	85	H0068100	241
R	85	0G	IWAKUNI JAPAN MCAS	ENGINE MAINT SHOP	21121	0008160	SP	95	1780	2400	85	H6261300	788
R	85	0G	TUSTIN CA MCAS/H/	MAINT HANGAR	21105	0091780	SP	95	13200	10500	85	H6253500	150
R	85	0G	TUSTIN CA MCAS/H/	ENGINE TEST CELL	21181		LS	95	1140	1050	85	H6253500	159
R	85	0G	YUMA AZ MCAS	PARA AND SURVIV EQUIP SHOP	21134	0007500	SP	95	790	830	85	H6297400	177
IC TOTAL									21610	19180			
R	85	0G	BEAUFORT S C MCAS	CONST & WGT WAND EQP SHP	21820	0028180	SP	95	1950	3700	84	H6016900	205
R	85	0G	CAMP LEJEUNE NC MCB	COMBAT VEH MAINT SHOP	21420	0026570	SP	95	2190	3550	85	H6700100	054
R	85	0G	CAMP PENDLETON CA MCB	TACTICAL VEH MAINT PACS	21451	0098010	SP	95	8500	7000	85	H0068100	136
R	85	0G	CAMP PENDLETON CA MCB	TACT VEH MAINT PAC	21451	0015090	SP	95	1680	2200	85	H0068100	907
R	85	0G	IWAKUNI JAPAN MCAS	VENTILATION IMPROVES	21930		LS	98	890	300	84	H6261300	716
R	85	0G	OKINAWA JA MCB CP BUTLER	TACTICAL VEH MAINT SHOP	21451	0006260	SP	95	1380	1600	85	H6740000	523
R	85	0G	YUMA AZ MCAS	MISS EQUIP MAINT SHOP	21220	0020580	SP	95	1900	2500	85	H6297400	390
IC TOTAL									18490	20850			
R	85	1Q	CAMP PENDLETON CA MCB	FUEL STORAGE FACILITY	12450		LS	95	3340	2900	85	H0068100	129
IC TOTAL									3340	2900			
R	85	1W	EL TORO CA MCAS	HIGH EXPLOSIVES BASS	42122	0010250	SP	95	2690	1200	85	H6005000	328
R	85	1W	OKINAWA JA MCB CP BUTLER	AMMO MAGAZINES (FUJI)	42122	0004600	SP	95	950	1300	85	H6740000	528
R	85	1W	TWENTYNINE PALMS CA MAGCO	AMMO STRG PACS	42122	0081060	SP	95	4830	3400	85	H6739900	268
IC TOTAL									8470	5900			

ENCL (2)



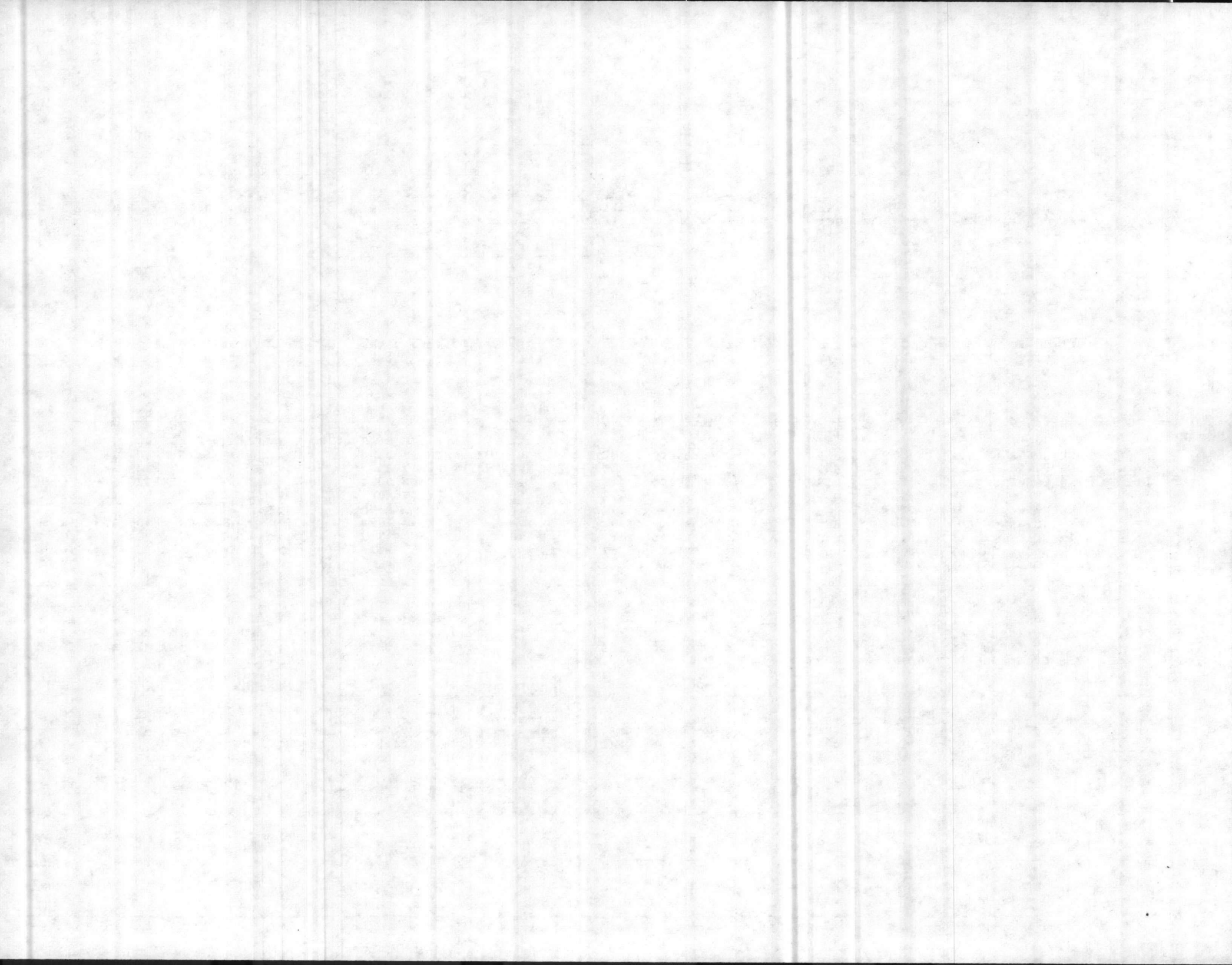
SEQ. NO. 398

(I-MCON PORTION)

MARINE CORPS PROGRAM YEAR LISTING

MC	PI	IG	ACTIVITY LOCATOR NAME	PROJECT DESCRIPTION	CATCD	QUANT	UN	BY	P/COST	E/COST	BY	UIC	PROJ
R	85	1Z	BARSTOW CA MCLB	SECURITY WAREHOUSE	44113	0089970	SP	95	5670	7000	82	H6220400	104
R	85	1Z	CAMP PENDLETON CA MCB	HAZARDOUS WASTE FAC	44130		LS	05	440	310	83	H0068100	939
R	85	1Z	NEW RIVER NC MCAS	HAZARDOUS AND PLAN STRUSE	44130	0006596	SY	95	340	460	85	H6257300	358
R	85	1Z	YUMA AZ MCAS	COLD STORAGE WAREHOUSE	43110	0003420	SP	95	660	700	85	H6297400	114
									IC TOTAL	7110	8470		
R	85	1#	CAMP LEJEUNE NC MCB	DIVISION HQ	61070		LS	95	9300	11000	85	H6700100	802
R	85	1#	EL TORO CA MCAS	WING HQS	61070	0045300	SP	95	4610	5000	85	H6005000	948
R	85	1#	TWENTYNINE PALMS CA MAGCC	BATFLN HEADQUARTERS	61072	0017610	SP	95	1900	2000	86	H6739900	292
R	85	1#	WASH DC MARBARRACKS	BUILDING MODN	61010	0087760	SP	95	2540	3200	85	H6504900	002
									IC TOTAL	18430	21200		
R	85	1#	CAMP W. H. SMITH OAHU HI	UEPH	72115	0018180	SP	95	1910	2000	85	H6738500	090
R	85	1#	CAMP LEJEUNE NC MCB	UEPH	72111	0286500	SP	95	16800	18000	84	H6700100	624
R	85	1#	CAMP PENDLETON CA MCB	ENLISTED DIN FAC MODN	72210	0044930	SP	95	2610	2200	81	H0068100	517
R	85	1#	CAMP PENDLETON CA MCB	UEPH	72111	0339140	SP	95	23900	18000	85	H0068100	868
R	85	1#	CHERRY POINT NC MCAS	UEPH	72111	0170300	SP	95	10000	10400	86	H0014600	805
R	85	1#	KANEHOE BAY HI MCAS	UEPH MOD	72111	0131000	SP	95	7610	10100	85	H0031800	207
R	85	1#	PARRIS ISLAND SC MCRD	UEPH MOD	72111	0046100	SP	95	2550	3300	85	H0026300	070
R	85	1#	PARRIS ISLAND SC MCRD	RECRUIT BARRACKS INPR	72115		LS	95	3680	5400	85	H0026300	139
R	85	1#	PARRIS ISLAND SC MCRD	RECRUIT BARRACKS	72115	0076920	SP	95	4990	6200	84	H0026300	204
R	85	1#	QUANTICO VA MCDEVED COM	UEPH MOD	72111	0081500	SP	95	3710	5100	85	H0026400	314
R	85	1#	SAN DIEGO CA MCRD	UEPH	72111	0010400	SP	95	9920	10000	84	H0024300	210
R	85	1#	YUMA AZ MCAS	UEPH	72111	0163920	SP	95	17740	10300	85	H6297400	090
									IC TOTAL	98420	101000		
R	85	1#	CAMP PENDLETON CA MCB	CHAPEL, REL ED & INSTR PAC	73083	0021000	SP	95	2360	2100	83	H0068100	437
R	85	1#	CAMP PENDLETON CA MCB	CHILD CARE CENTER	74074	0018750	SP	95	2200	1200	88	H0068100	943
									IC TOTAL	4560	3300		
R	85	1#	CAMP LEJEUNE NC MCB	WATER TRTMT PAC INPRS	84110		LS	95	8000	8400	84	H6700100	785
R	85	1#	KANEHOE BAY HI MCAS	WTR DISTR SYS IMPROVS	84210		LS	95	6490	2800	85	H0031800	043
									IC TOTAL	14490	11200		
R	85	1#	BEAUFORT S C MCAS	OIL SPILL PREVENTION	87120		LS	05	780	370	84	H6016900	338
R	85	1#	EL TORO CA MCAS	LAND ACQUISITION	91110	0000021	AC	95	4750	5800	83	H6005000	404
R	85	1#	TUSTIN CA MCAS/H/	OIL SPILL PREVENTION	87120		LS	05	710	650	84	H6253500	238
									IC TOTAL	6240	6820		
									PT TOTAL	233230	232280		

ENCL (2)



1. COMPONENT NAVY	FY 19 <u>85</u> MILITARY CONSTRUCTION PROJECT DATA	2. DATE
----------------------	--	---------

3. INSTALLATION AND LOCATION NAVAL & MARINE CORPS INSTALLATIONS, VARIOUS LOCATIONS INSIDE & OUTSIDE UNITED STATES
--

4. PROJECT TITLE PROJECTS \$1 MILLION AND UNDER	5. PROJECT NUMBER VARIOUS
--	------------------------------

<u>CATEGORY CODE</u>	<u>PROJECT NUMBER</u>	<u>PROJECT TITLE/INSTALLATION/LOCATION</u>	<u>COST (\$000)</u>
<u>Inside the United States</u>			
<u>Marine Corps</u>			
171.35	P-320	Operational Trainer Facility, MCAS Beaufort, SC	770 760 <u>1/</u>
<p>Training facilities are required for the instruction and technical training of pilots in the operation of the new F-18 Weapons System to be delivered in November 1984. Space is also required for classrooms, administrative offices, simulator maintenance and repair, and software support. This project provides facilities to support this new system.</p>			
179.40	P-375	Small Arms Range - Outdoor, MCAS El Toro, CA	690 680 <u>1/</u>
<p>Personnel from El Toro and Tustin must travel 100 miles round trip to MCB Camp Pendleton to receive pistol requalification, since the former range at Tustin was demolished. This project will provide a 25-point outdoor small arms range at MCAS El Toro.</p>			

441.30	P-358	Hazardous and Flammable Storehouse, MCAS New River, NC	340 340 <u>1/</u>
<p>There is a serious lack of adequate safe storage space for flammable material at this facility. Hazardous materials are currently being stored in unsafe conditions on loading docks, in combustible house trailers and vans, or inside the working spaces in hangars. This project constructs masonry storehouses in compliance with OSH standards.</p>			

AS ENACTED
AUTH APPRO
PL 98-407 PL 98-473
8-28-84 10-12-84

1/ Reduced request because of budget adjustment - revised inflation indices.

(Continued on DD 1391c)

