

NATURAL RESOURCES AND ENVIRONMENTAL AFFAIRS
Marine Corps Base
Camp Lejeune, North Carolina 28542

1 Oct 86
Date

From: Director
To: Al Austin
Subj: Land Acquisition Info

Personnel + Equipment requirements
in NREAD management activities
at of Hwy 17.

Provided as requested
JK
Julian

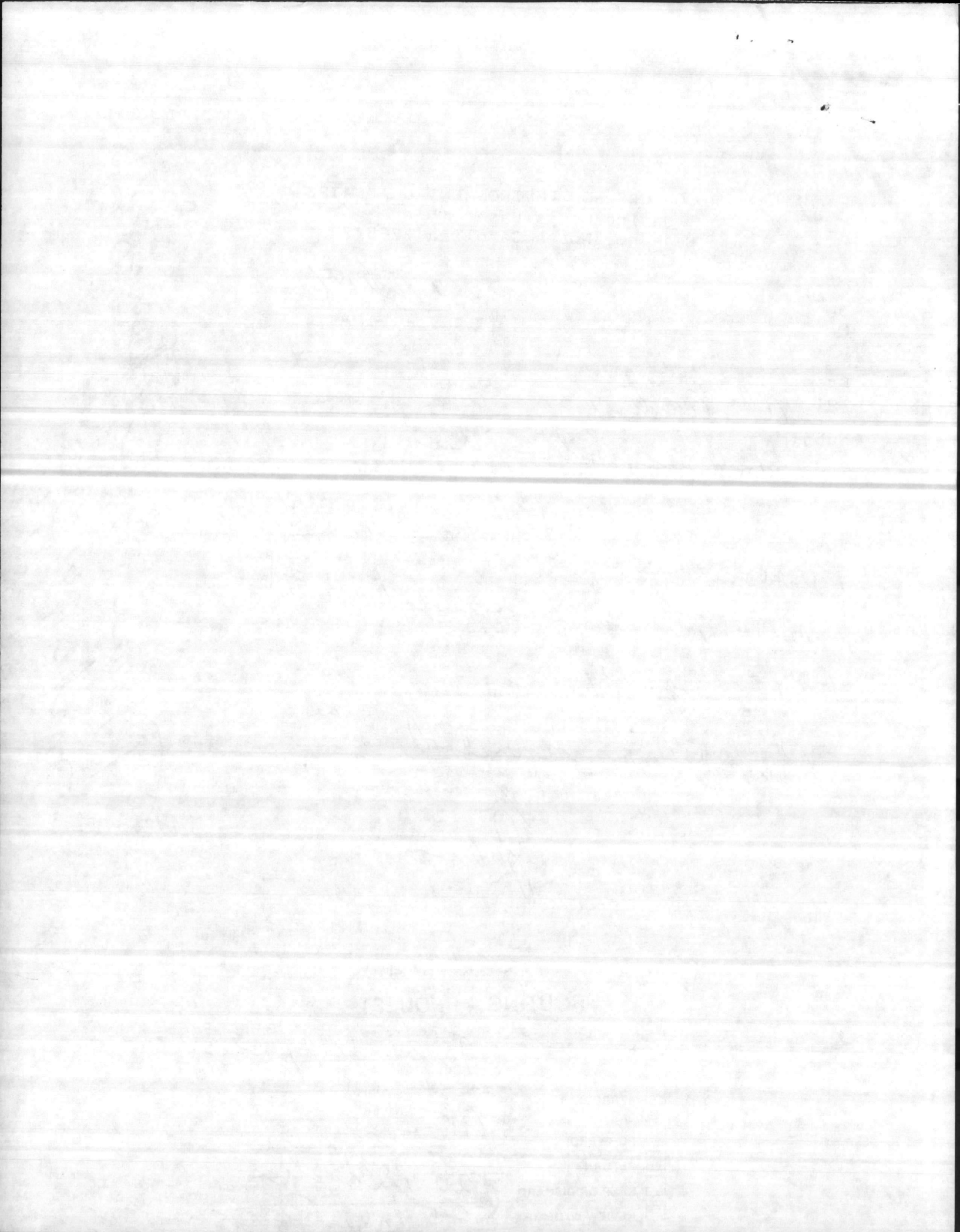
Please note changes
made per Julian
10/4/86

Scotch® 7664 "Post-it" Routing-Request Pad

ROUTING - REQUEST

- Please
- READ
- HANDLE
- APPROVE
- and
- FORWARD
- RETURN
- KEEP OR DISCARD
- REVIEW WITH ME

To: File Copy
Return to
Peter Block
Charles Peterson



FORESTRY REQUIREMENTS

EMPLOYEES

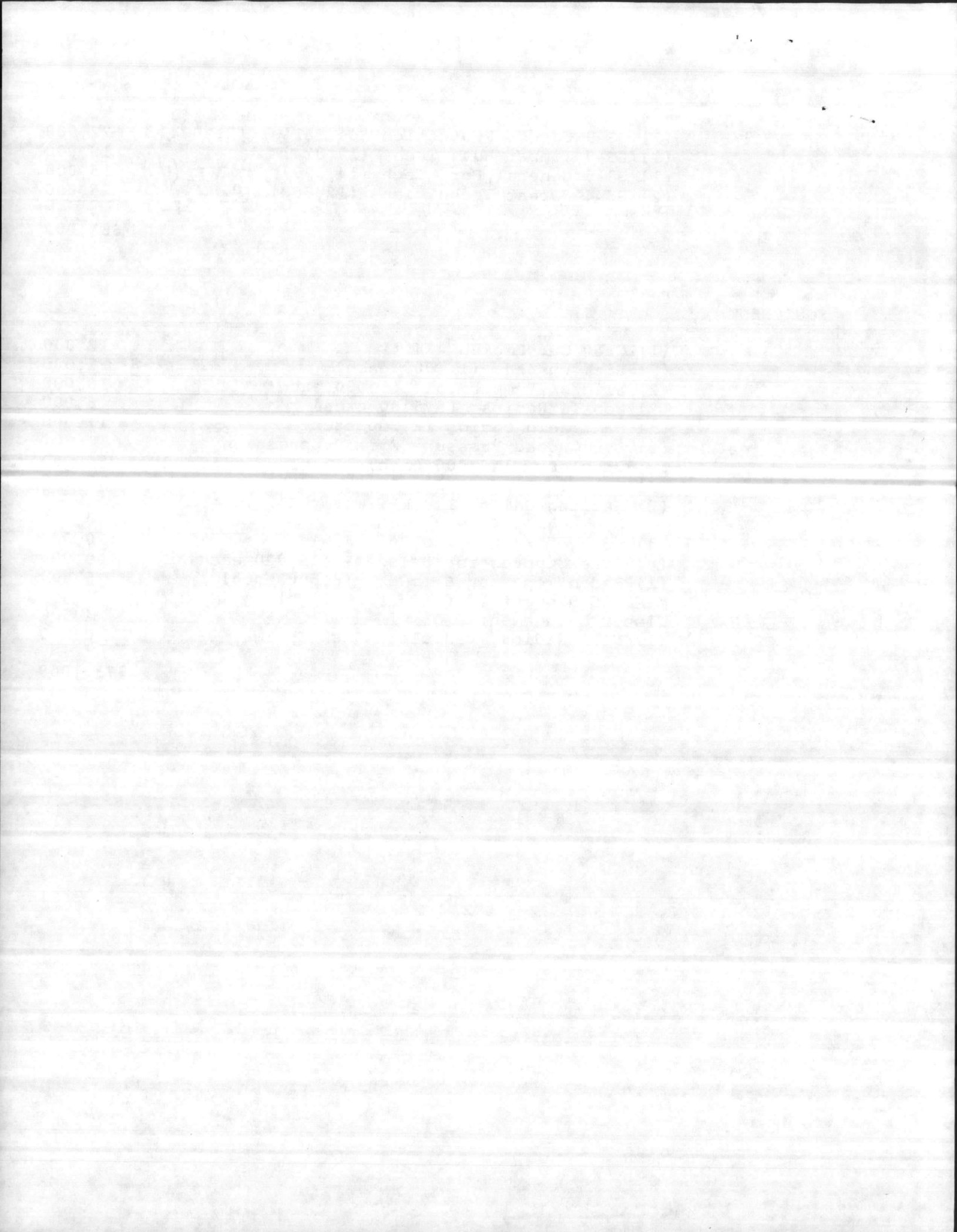
5 Civilian	(1) GS-9 Forest Protection Specialist (21,804)	22,000
	(1) GS-7 Timber Mgt. Tech (17,824)	18,000
	(1) GS-5 General For. Tech (14,390)	15,000
	(2) GS-4 Forest Technicians (12,862)	26,000
		<u>26,000</u>
		\$81,000

No. of
unit *pdw*

EQUIPMENT

(1) Crew Cab Pickup 4X4	12,000
(2) Pick-up 4X4 (11,000 each)	22,000
(2) Slip on Pumper Unit (5,000 each)	10,000
(9) Mobile Radios (575.00 each)	6,000
(5) Hand held radios (2,200 each)	11,000
(2) Low Ground Pressure Fire Suppression Crawlers (140,000 each)	280,000
(2) Pocosin Fire Plows (8,000 each)	16,000
(2) Hauling Units (Truck Tractor & Low Beds) (90,000 each)	180,000
(4) Bridge Trucks (30,000 each)	120,000
(4) Fire Suppression Bridges (15,000 each)	60,000
(1) Radio Repeater & tower (6,500 each)	6,500
Misc. Equipment (Safety, Fire Fighting & Timber Management)	4,000
(1) NCFS Radios, Vehicle & Desk Charger	<u>2,500</u>
	\$730,000

*Make copy of
File pdw*



WILDLIFE REQUIREMENTS

EMPLOYEES

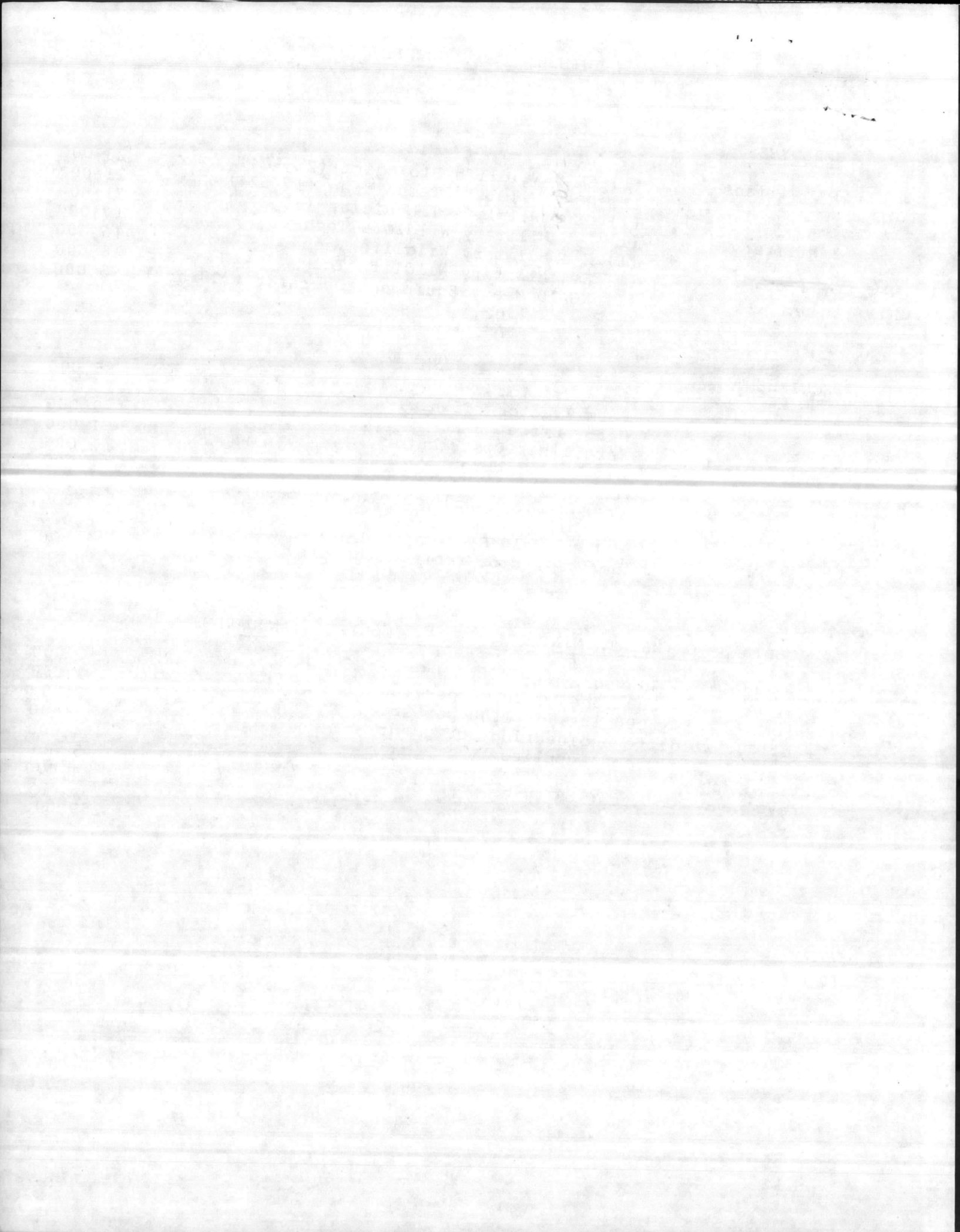
3 Civilians	(1) GS- ¹¹ 8 Wildlife Biologist (21,904)	26,000
	(1) GS- 7 Wildlife Technician (17,824)	21,000
	(1) GS- 7 Wildlife Tehcnician (17,824)	21,000
3 Military	(1) E-5 Military Wildlife Tech	17,000
86 omit (1) E-4	(1) E-4 Military Wildlife Tech	16,000
Other	(1) E-4 Military Wildlife Tech	16,000
	(1) WG-10 Heavy Equipment Operator (200 hrs)	5,000

EQUIPMENT

	Farm Tractor 90 h.p.	35,000
	Farm Tractor 45 h.p.	29,000
	Heavy Offset Disc 9 ft.	9,000
	Fertilizer Distributor	1,000
	Lime Distributor	1,000
	Section Harrow	1,000
	Charge for (805) vehicles (4 each)	12,000
	4 Mobile Radios	4,000
	4 Hand Held Radios	8,000
	Heavy Tractor rental (200 hrs)	2,000

MATERIALS FOR MAINTAINING AREAS FOR WILDLIFE (ANNUALLY)

Fertilizer	- 30 tons @ 200.00 per ton	6,000
Lime	- 100 tons @ 30.00 per ton	3,000
Seed	- 6000 lbs. @ 1.00 per lb.	6,000
Fuel for wildlife engineering equipment		7,000
Misc. Materials and Supplies		4,000
Misc. Support		5,000
Travel and Registration		4,000
		<hr/>
		\$259,000



5200
NREAD
17 Dec 87

From: Director, Natural Resources and Environmental Affairs
Division, Marine Corps Base, Camp Lejeune
To: Assistant Chief of Staff, BOSMAD, Marine Corps Base,
Camp Lejeune
Via: Assistant Chief of Staff, Facilities, Marine Corps Base,
Camp Lejeune

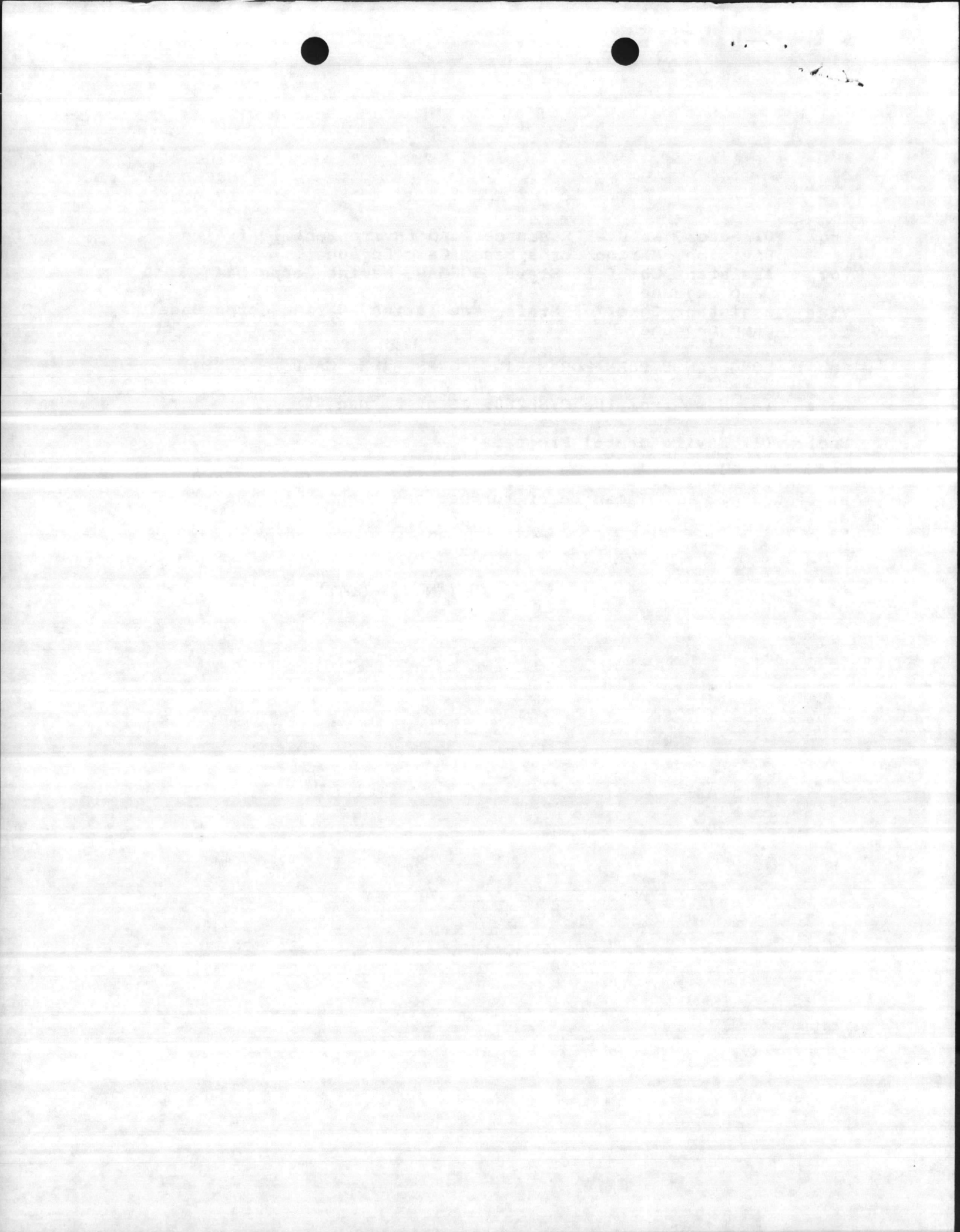
Subj: LONG RANGE PLAN FOR MARINE CORPS BASE, CAMP LEJEUNE

Ref: (a) Memo from the C/S 2805 CS of 11 Dec 87

Encl: (1) Environmental Programs

1. In response to the reference, the enclosure is provided as requested. If I can be of further assistance, please advise.

JULIAN I. WOOTEN



ENVIRONMENTAL PROGRAMS

A. Introduction

The Natural Resources and Environmental Affairs Division (NREAD), is tasked with assisting the Commanding General in the protection, management and conservation of the Base's soil, water, forest and wildlife resources. It also means utilizing these natural resources to their fullest potential for the benefit of the United States and its people with military training receiving priority. The natural resources found aboard Camp Lejeune are typical of resources found in the Southeastern Atlantic Coastal Plain.

B. Natural Resources Planning

The Camp Lejeune Multiple-Use Natural Resources Management Plan (NRMP), gives the management concepts to be carried out within the Camp Lejeune complex for a 10-year period, on the use and protection of land, water and related natural resources following the requirements set forth by Marine Corps Order P11000.8b. The latest NRMP is presently in the final stages of printing and should be officially delivered to the Commanding General by February 1988. The NRMP was developed by a cooperative effort between Marine Corps Base personnel and the USDA, Soil Conservation Service.

C. Expected Major Changes

The proposed acquisition of approximately 39,000 acres to enhance military training will have major impacts on NREAD. The land acquisition will greatly increase the timber management and protection requirements placed on the Forestry Branch. An increase an 10 - 12,000 acres of annual prescribed burning plus additional fire suppression and reforestation activities are anticipated. The Forestry Branch has identified a requirement for five additional civilian employees, trained in forestry management practices and techniques. It is also estimated the two low-ground pressure tractor plow units plus portable bridges, bridge trucks, work truck and assorted other tools and equipment will be required. The estimated cost of the tools and equipment is approximately \$730,000.

The proposed land acquisition will significantly increase the wildlife management program for providing optimum environmental conditions for all present wildlife including both game and nongame species. Three additional employees, trained in wildlife biology and management in addition to three military wildlife technicians to assist in the technical management of fish and wildlife have been identified. It is also estimated that two farm tractors, heavy offset disc, fertilizer/seed distributors, harrows and miscellaneous other tools, material and equipment will be required. The tools, materials and equipment are estimated at \$137,000.

