

AUG 1 4 58 1978

Helo
Syln
Ray

RTTUZYUW RUEBNMA0020 2131518-UUUU--RULSSUU.
ZNR UUUUU

R 011518Z AUG 78

HAS BEEN SENT

FM MCAS H NEW RIVER NC

TO COMCABEAST CHERRY PT NC

INFO CG MCB CAMP LEJEUNE NC

ZEN/MAG TWO SIX

NAVREGMEDCEN CAMP LEJEUNE NC

NAVREGUENCEN CAMP LEJEUNE NC

BT

UNCLAS//N05440//

FACILITIES REQUIREMENTS TO SUPPORT TRANSPORT HELO SQDNS REORG

A. CMC 101300Z MAY 78 (U)

B. COMCABEAST 181950Z MAY 78 (U)

C. CG SECOND MAW 192102 MAY 78 (U)

D. MAG TWO SIX 241800Z MAY 78 (U)

E. FMFLANT 062129Z MAY 78 (U)

F. MCAS H NEW RIVER 262300Z JUN 78 (U)

G. MCAS H NEW RIVER 292010Z JUN 78 (U)

H. FONECON BTWN LTCOL KORMAN HQMC (DCS AIR) AND B J BLAKE (FAC MCASH)

PAGE TWO RUEBNMA0020 UNCLAS

NR) OF 19 JUL 78

1. REF A PROVIDED INITIAL INFO CONCERNING SUBJ REORG AND REQUESTED SUBMISSION OF FAC RQMTS. PERTINENT SUBSEQUENT ACTIONS INCLUDE:

A. BY REF B COMCABEAST REQUESTED MCAS H NR TO TAKE SUBMISSION OF FAC RQMTS FOR ACTION.

B. BY REF C CG 2ND MAW PROVIDED MAG TWO SIX WITH INFO CONTAINED IN REF A.

C. BY REF D SUBSEQUENT TO MTG BTWN MCASH S-4 AND MAG TWO SIX S-4 AND PRIOR COMPLETION OF MCASH ANALYSIS OF RQMTS ON 24 MAY 78 MAG TWO SIX PROVIDED CG 2ND MAW WITH LIST OF ADD'L FACILITIES REQUIRED TO SUPPORT PLANNED REORG.

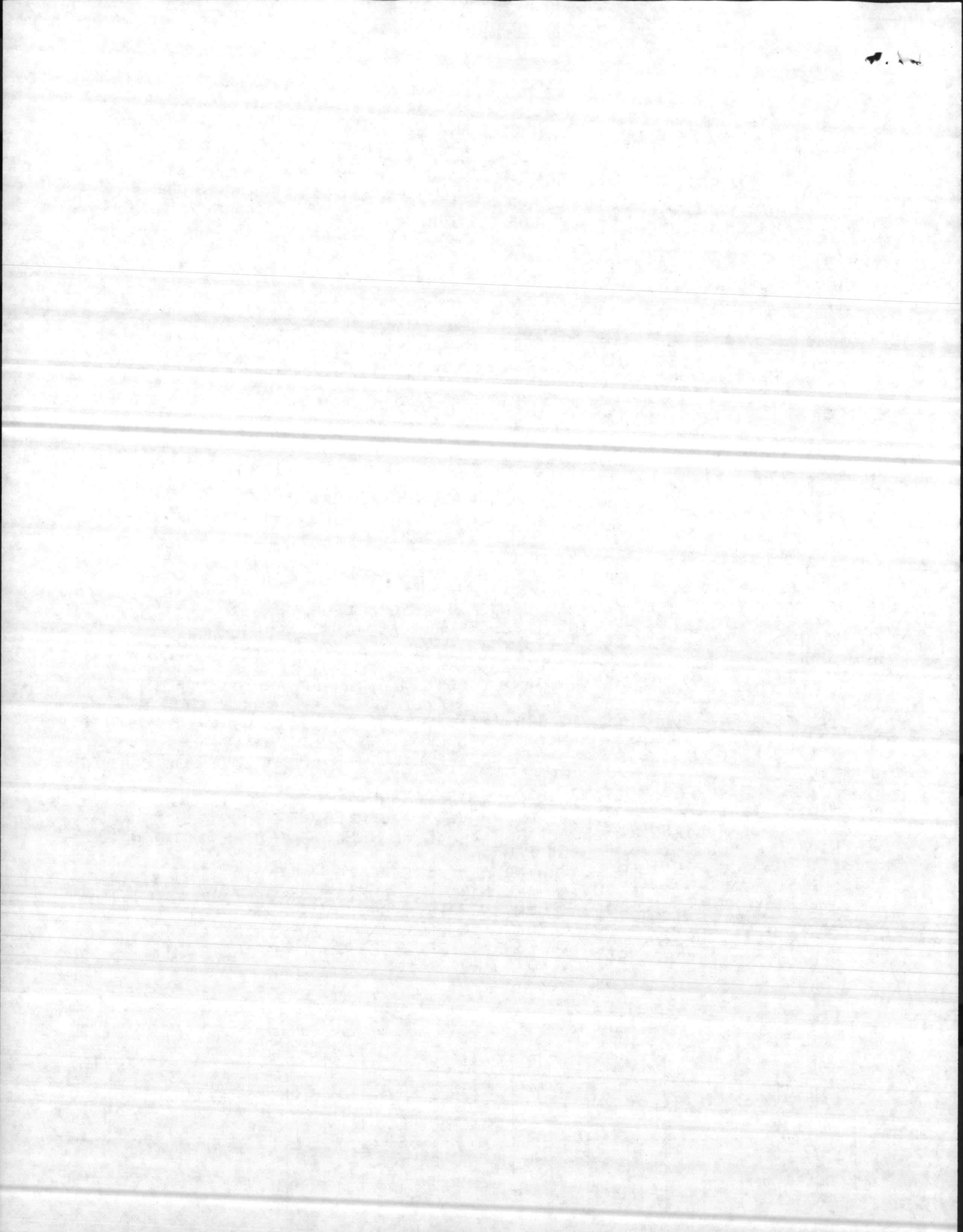
D. BY REF E CG CMCLANT STATED FAC RQMTS FOR PLANNED REORG TO CMC WHICH WERE SAME AS REF D (LESS ONE MODULE) AND RECOMMENDED PROCUREMENT ACTION FOR SUPPORT EQUIP AND HANGAR SPACE BE IMPLEMENTED PRIOR TO RECOMPOSITION OF CH-46 AND CH-53 SQDNS.

E. REFS F AND G PROVIDED MCAS H NR ANALYSIS OF ADD'L RQMTS IN REGARDS TO HANGARS WAREHOUSING A/C PARKING RAMPS BEQS DINING FACILITIES AND A/C FUEL PROVISIONS AND RECOMMENDED CG MCB CLNC BE INCLUDED AS ADDRESSEE ON ALL FUTURE CORRESPONDENCE CONCERNING SUBJ FAC RQMTS.

F. BY REF H T/O PERSONNEL FIGURES WERE PROVIDED SO THAT INCREASED BASE LOADING COULD BE DETERMINED ASAP.

	CM	PAO	BJA	NAVY	ASO	CHAP	PRC	SUP	EO	EO	SHS	DISB	ACC	ICP	S-4	S-3	S-1	CO
																		XO
																		ADJ
																		SGTMAJ
																		ADMIN CHIEF

A
C
T
I
V
E



PAGE THREE RUEBNMA0020 UNCLAS

2. IN VIEW OF ABOVE FOLLOWING FACILITIES PROJ ARE BEING PROPOSED BY THIS ACTY TO SUPPORT TRANSPORT HELO SQDNS. IN TWO COLUMNS THE PROJECT

PROJECT

PROJECT	REQUIREMENT
A. P-361 DISPENSARY	20,240 SF
B. P-404 A/C MAINT HANGAR (2 TYPE II MODULES AND 1 TYPE I MODULE)	144,054 SF
C. P-405 WAREHOUSE (STORAGE:OUT-OF-STORES)	46,514 SF
D. P-406 WAREHOUSE (GENERAL)	51,284 SF
E. P-408 ADDITION TO BACHELOR OFFICERS QUARTERS	37,599 SF
F. P-410 BACHELOR ENLISTED QUARTERS (FORMERLY P-999 IN DATA BANK HQMC (LFF-1)	274 MEN
G. P-125 DENTAL CLINIC	14,106 SF
H. P-411 HAZARDOUS FLAMMABLES STOREHOUSE	1,000 SF
I. P-413 ADDITION TO A/C MAINT HANGAR (AS-4108)	9,600 SF
3. ADD'L A/C PARKING RAMP SPACE NOT RECOMMENDED EXCEPT IN CONJ WITH CONSTRUCTION OF A/C MAINT HANGAR DUE TO EXCESS A/C PARKING APRON AND A/C ACCESS APRON SPACE.	
4. ABOVE INFO COMPLETES REQUIREMENTS IAW REF B.	

BT

#0020

NNNN

