

INVENTORY VERIFICATION

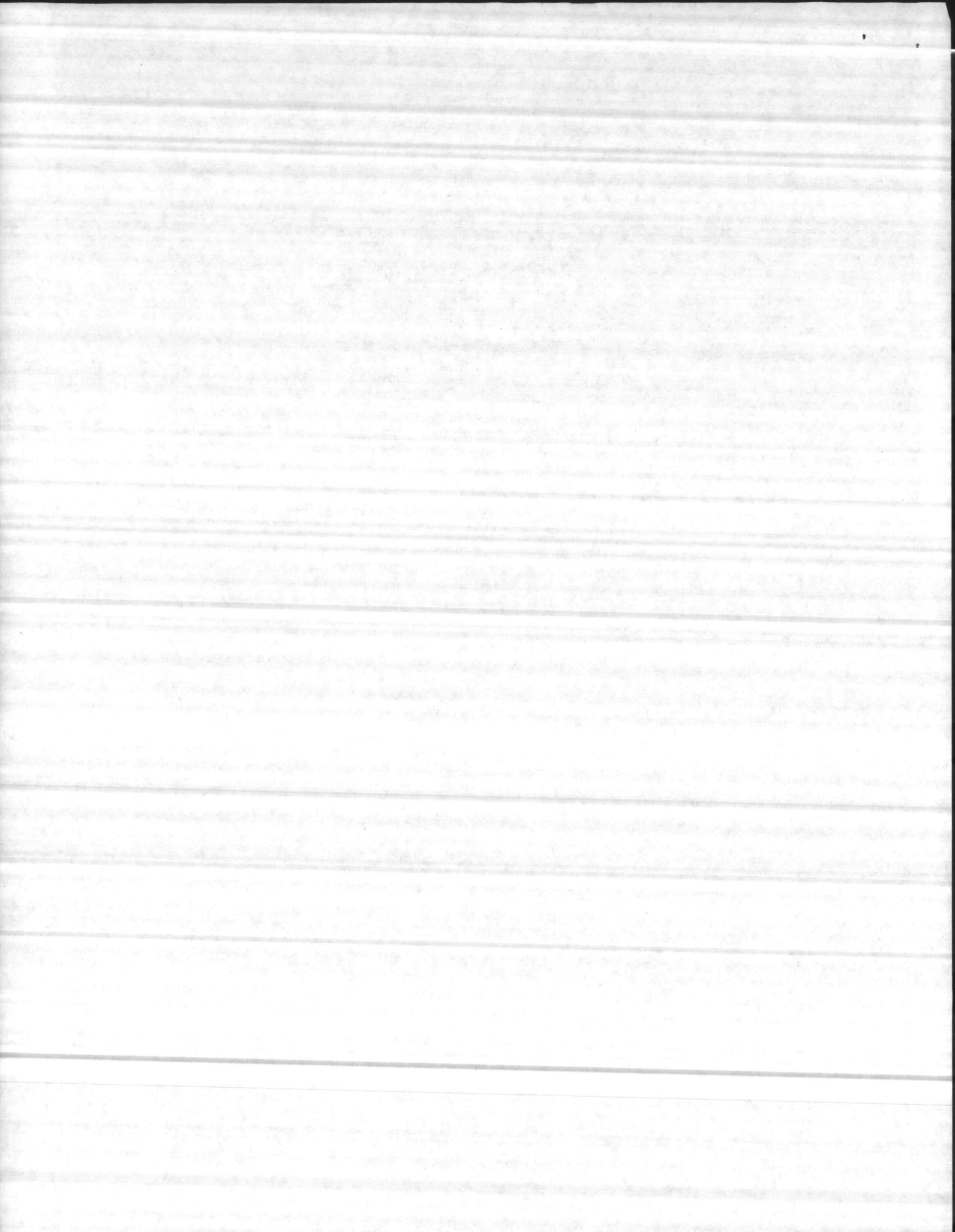
ITEM NOMENCALTURE 20-ft water tank

TAMCN B 2632

ITEM SSN# 002

YEAR 2006

MONTH	INVENTORIED BY	SUPERVISED BY	DATE
JAN	_____	_____	_____
FEB	_____	_____	_____
MAR	_____	_____	_____
APR	_____	_____	_____
MAY	<u>Lcpl Sherman</u>	<u>Sgt Denning</u>	<u>8-10</u> May 24
JUNE	_____	_____	_____
JULY	_____	_____	_____
AUG	_____	_____	_____
SEPT	_____	_____	_____
OCT	_____	_____	_____
NOV	_____	_____	_____
DEC	_____	_____	_____



INVENTORY VERIFICATION

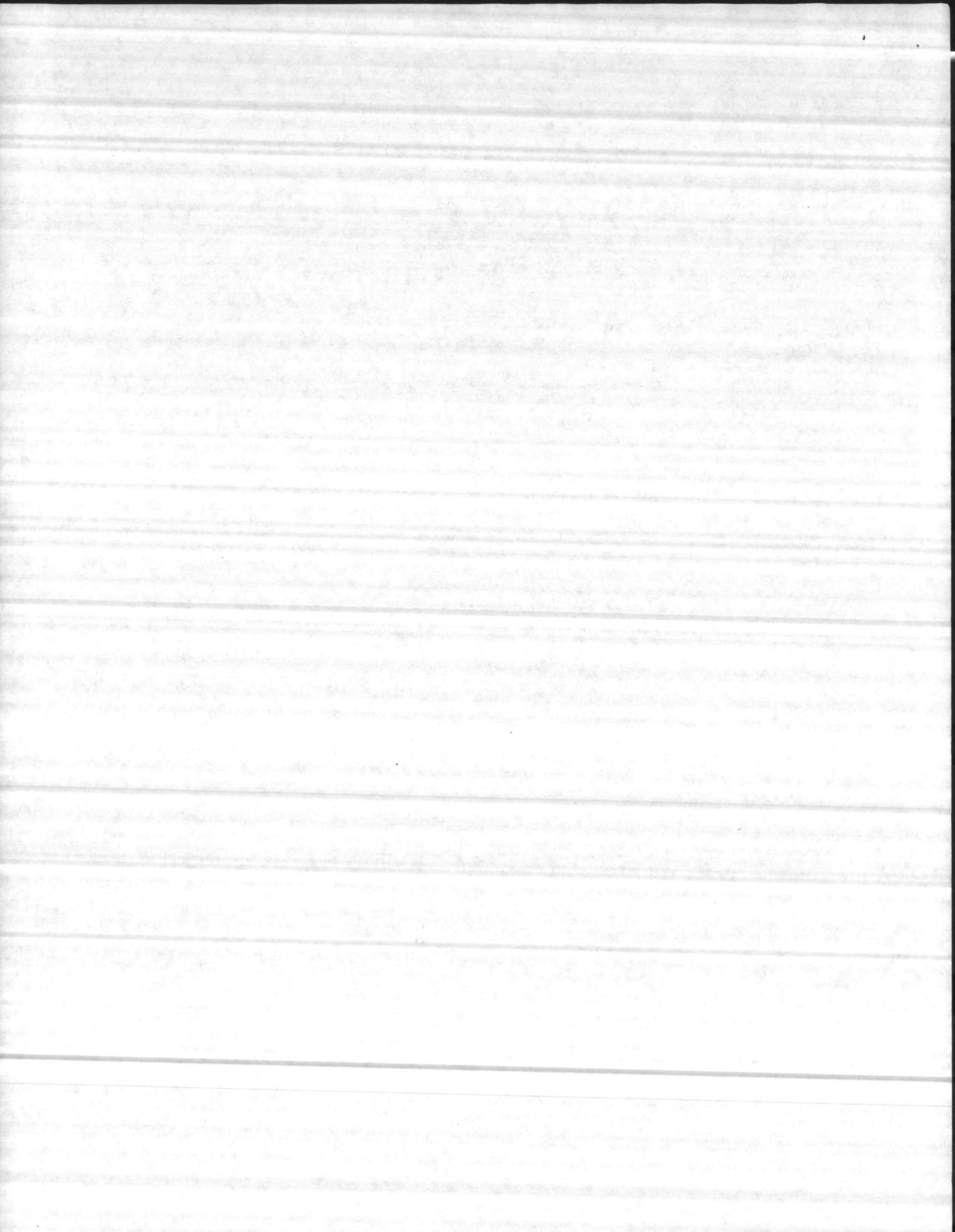
ITEM NOMENCALTURE 20-k water tank

TAMCN B2632

ITEM SSN# 002

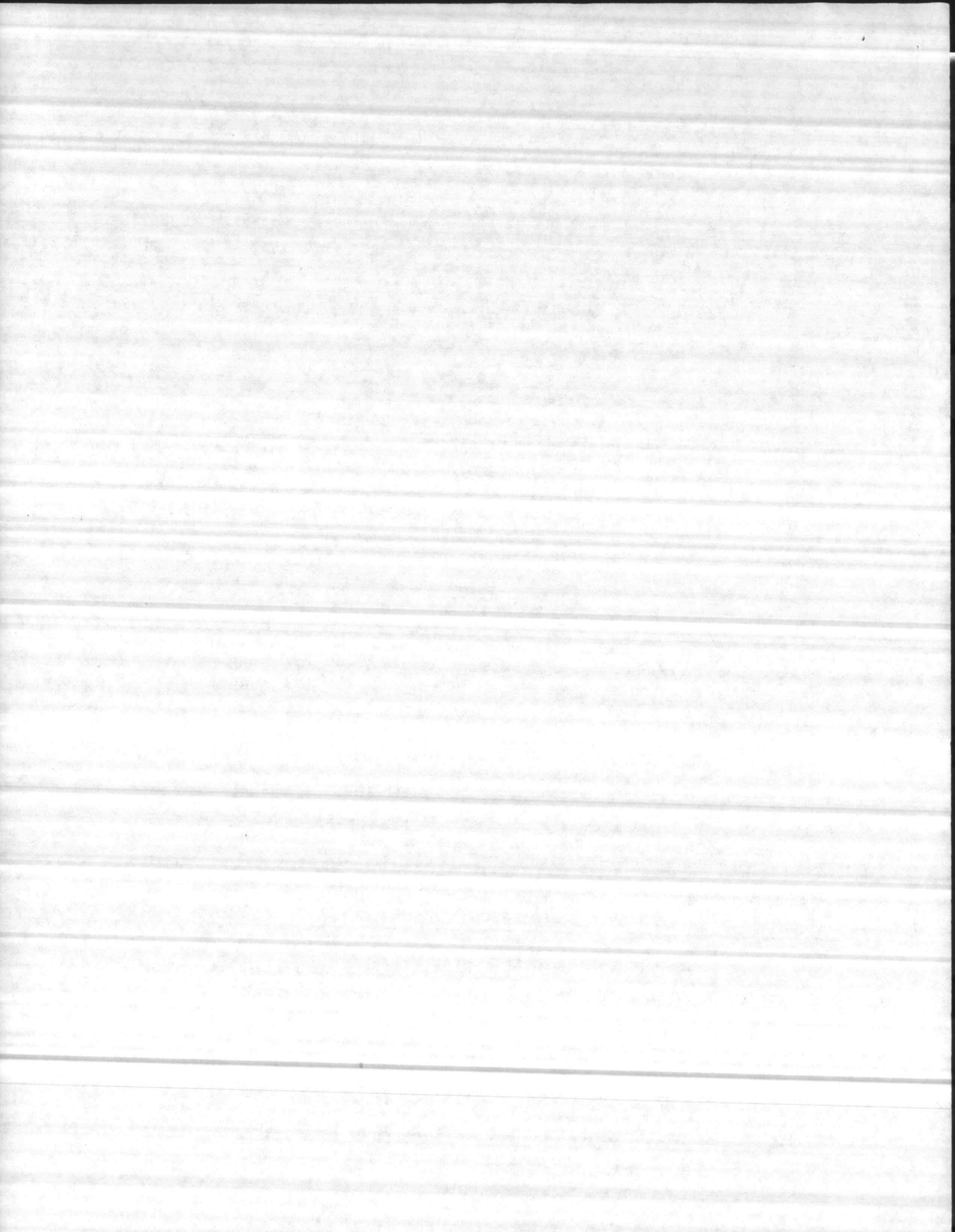
YEAR 2005

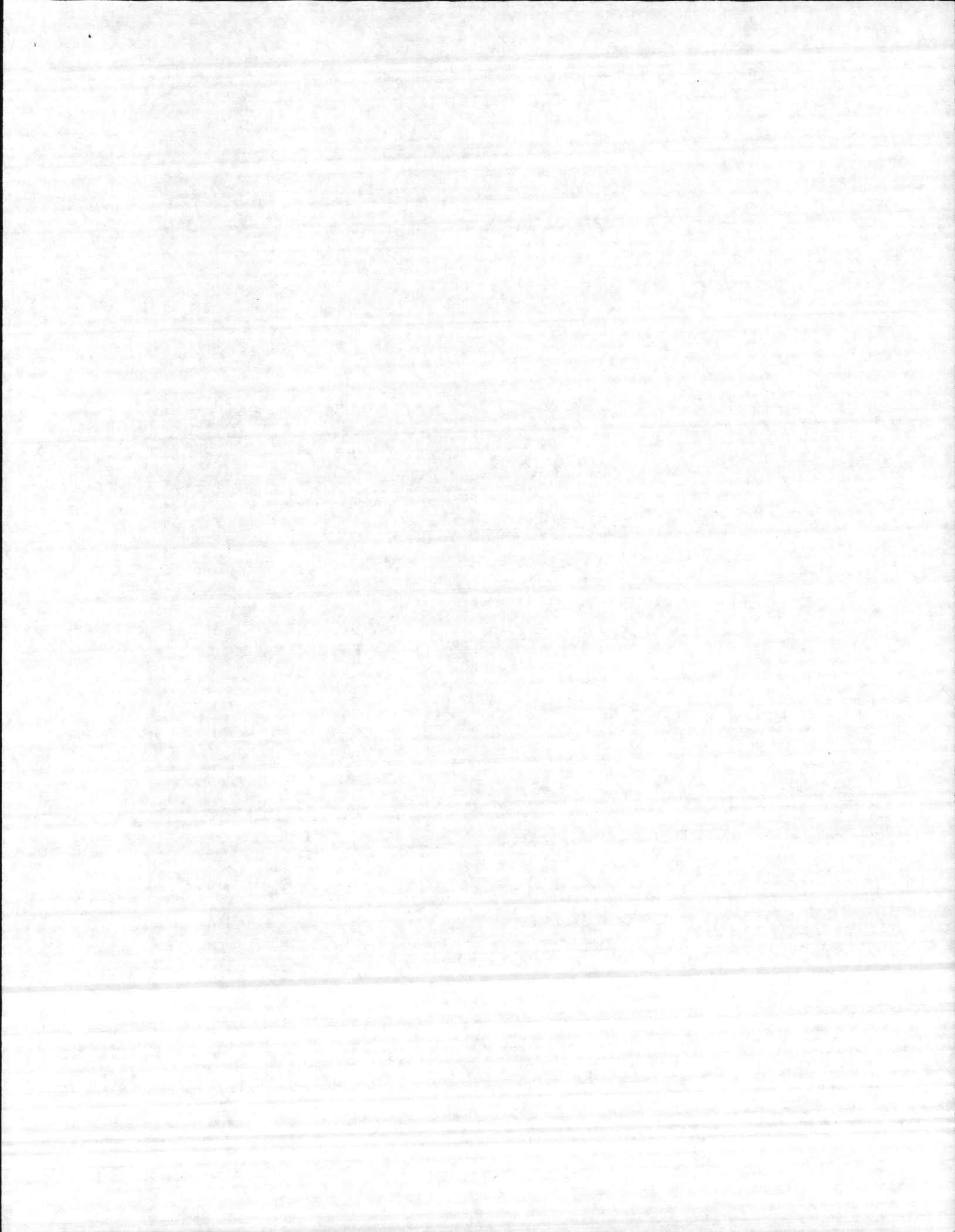
MONTH	INVENTORIED BY	SUPERVISED BY	DATE
JAN	<u>Jim Bennett</u>	<u>E-107</u>	<u>050106</u>
FEB	<u>Jim Bennett</u>	<u>E-107</u>	<u>050202</u>
MAR	<u>Jim Bennett</u>	<u>E-107</u>	<u>050303</u>
APR	<u>Jim Bennett</u>	<u>E-107</u>	<u>050403</u>
MAY	<u>Jim Blue</u>	<u>E-107</u>	<u>050501</u>
JUNE	<u>Jim Blue</u>	<u>E-107</u>	<u>050601</u>
JULY	<u>Jim Bennett</u>	<u>E-107</u>	<u>050704</u>
AUG	<u>Jim Bennett</u>	<u>E-107</u>	<u>050807</u>
SEPT	<u>Jim Bennett</u>	<u>E-107</u>	<u>050904</u>
OCT	<u>Jim Bennett</u>	<u>E-107</u>	<u>051004</u>
NOV	<u>Jim Bennett</u>	<u>E-107</u>	<u>051101</u>
DEC	<u>Jim Bennett</u>	<u>E-107</u>	<u>051203</u>

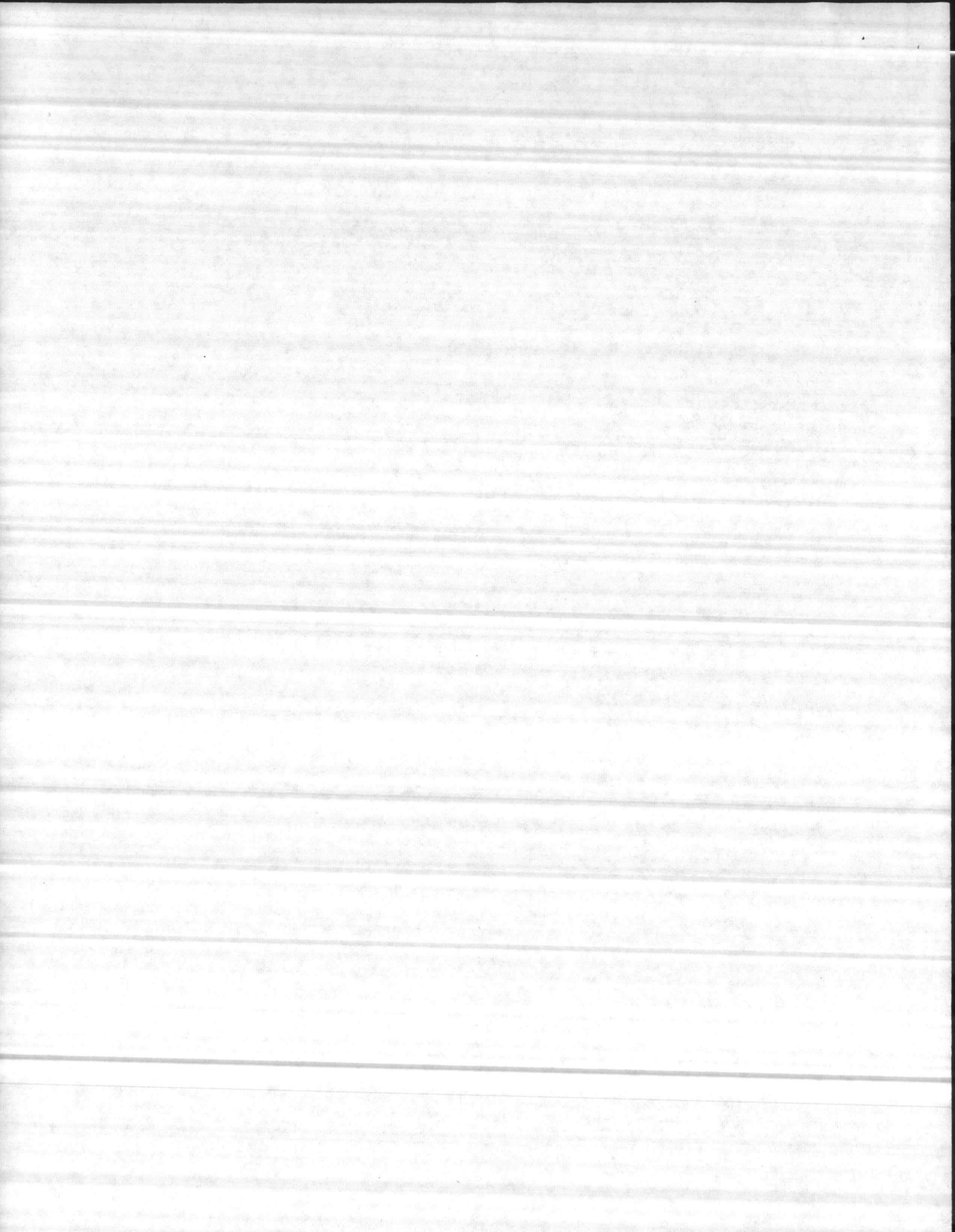


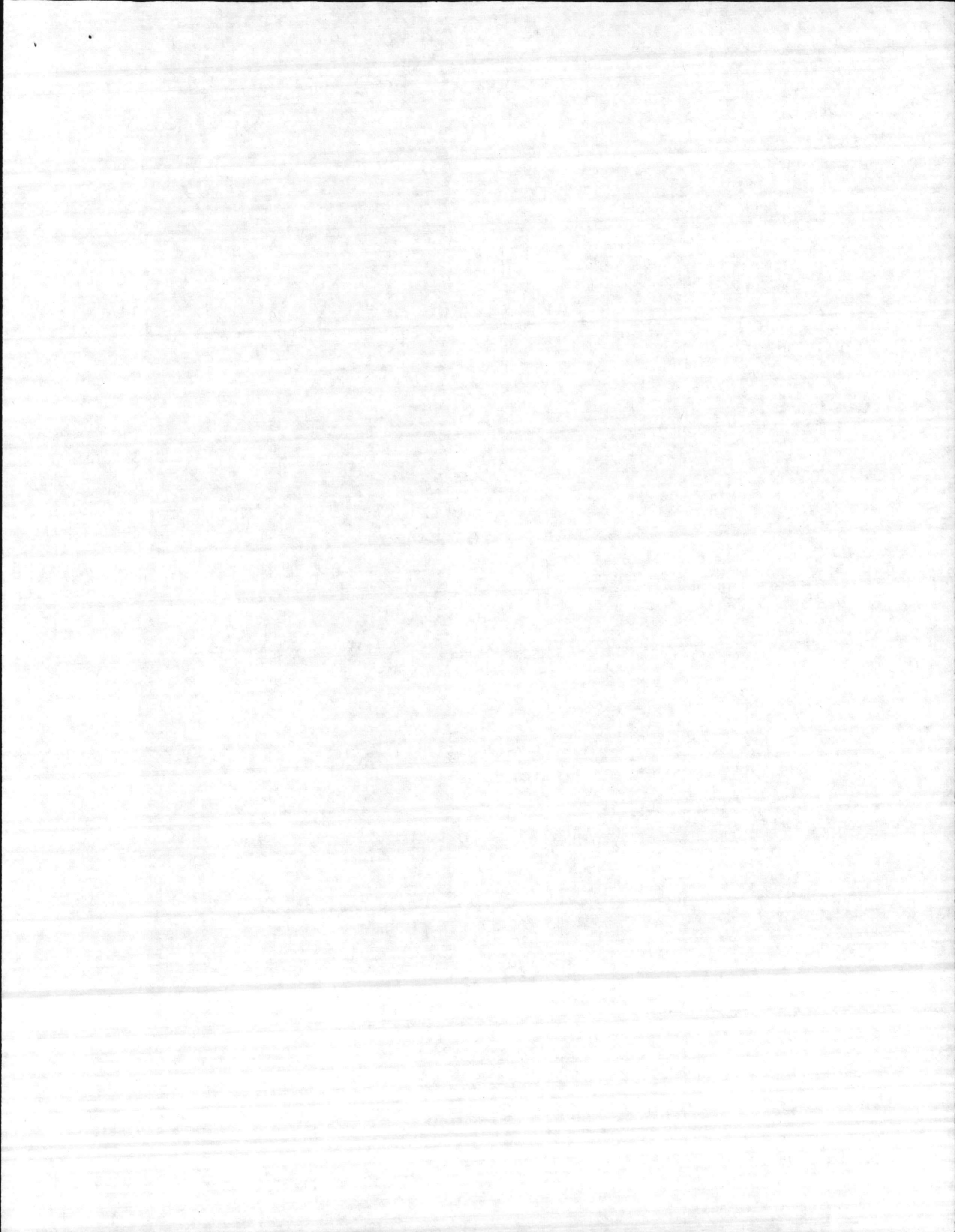
Inventory Legend

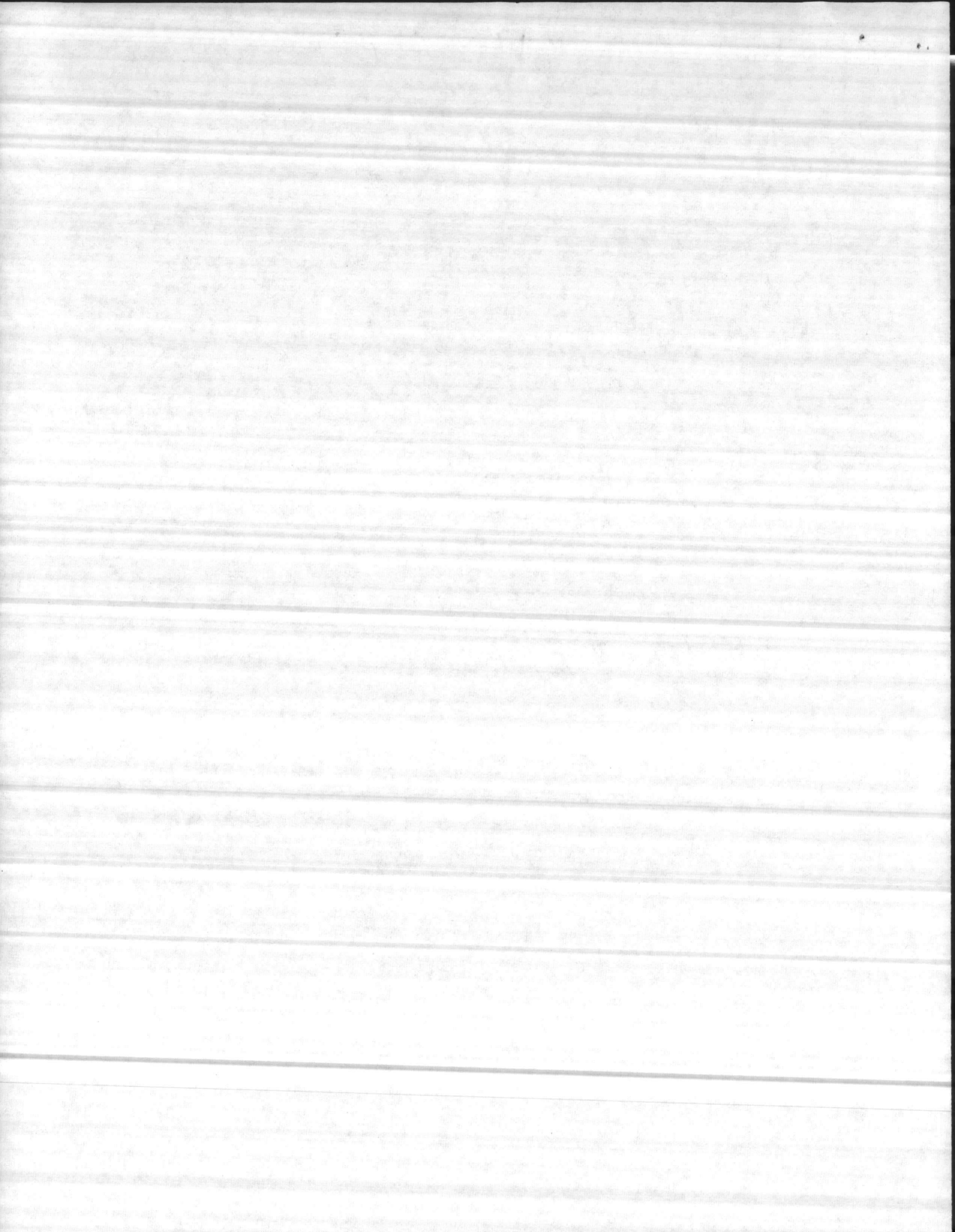
- ✓ - Accounted For
- M - Missing
- A/R - As Required
- N/A - Not Applicable
- U - Unserviceable
- I - Incomplete











INVENTORY SHEET

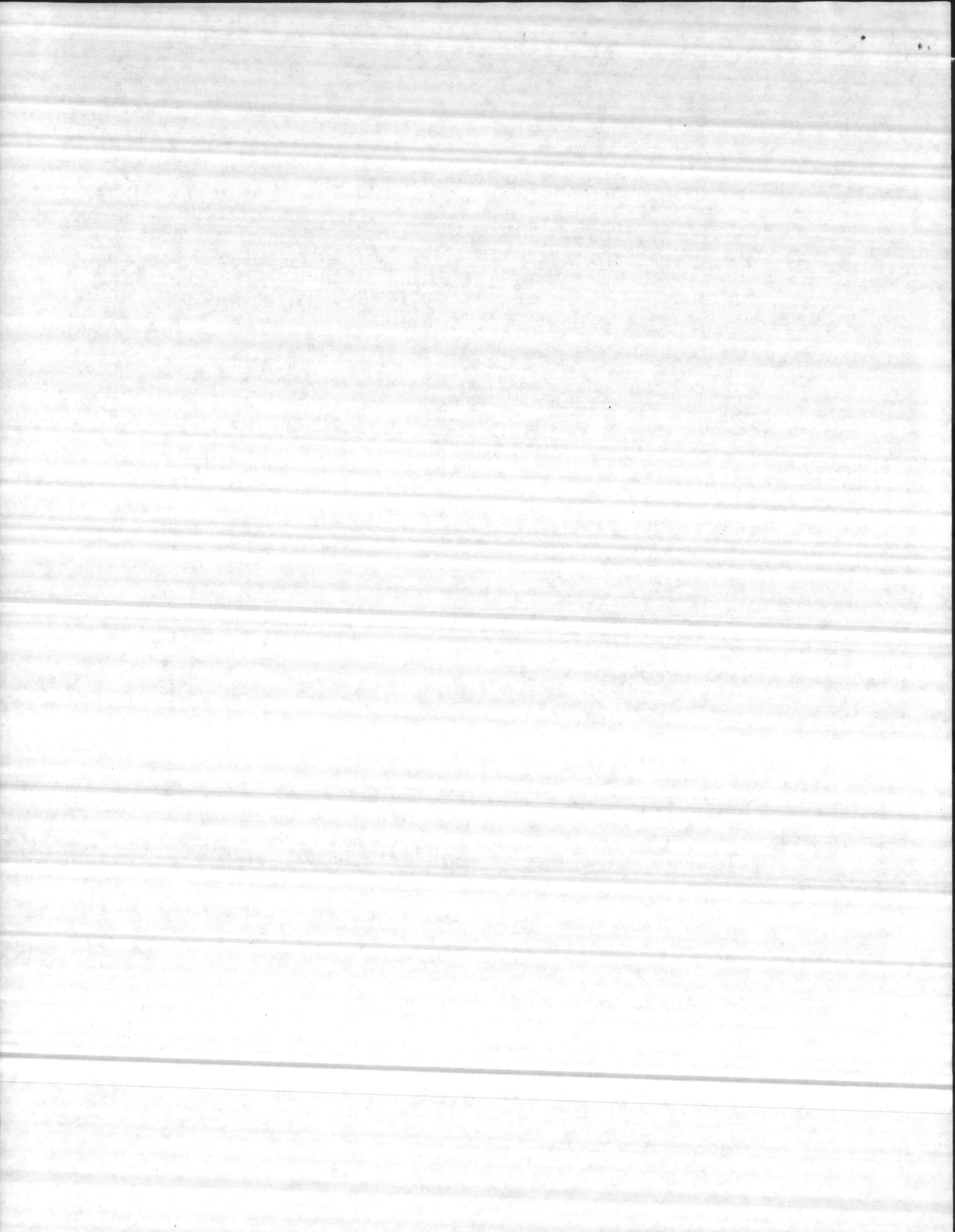
NAME OF EQUIPMENT: WATER TANK ASSEMBLY, FABRIC, COLLAPSIBLE 20K
(B2632 TAMCN)

SERIAL# 002
PUB DATE 870129

ITEM NO	STOCK NUMBER	ITEM IDENTIFICATION	UNIT OF MEAS	QTY USED IN UNIT	24 MONTH												REMARKS						
					JAN	FEB	MAR	APR	MAY	JUN	JUL	AUG	SEP	OCT	NOV	DEC							
1	PN 40BA90AL	ELBOW, 4" X 90° F X M	EA	1																			
2	PN 40BB90AL	ELBOW, 4" X 90° F X F	EA	1																			
3		GATE VALVE ASSY 4" C/O	EA	1																			
4	4820-01-159-0439	1-VALVE, GATE, FLNGD 4"	EA																				
5	4730-00-840-5347	1-CPLNG HALF 4" FLTOM	EA																				
6	4730-00-840-5348	1-CPLNG HALF 4" FLTOF	EA																				
7	4730-00-640-6156	1-CAP, DUST 4" F	EA																				
8	4730-00-640-6188	1-CAP, DUST 4" M	EA																				
9	5330-01-141-1864	2-GASKET, FLANGE 4"	EA																				
10	5310-00-732-0558	16-NUT, PLAIN, HEX	EA																				
11	5305-00-269-3215	16-SCREW, CAP, HEX	EA																				
12	5310-00-080-6004	16-WASHER, FLAT	EA																				
13	5310-00-637-9541	16-WASHER, LOCK	EA																				
14	PN 0758370	HOSE ASSY, DRAIN 3/4"	EA	1																			
15	4720-01-163-4685	HOSE ASSY, SUC 4" X 10'	EA	1																			
16	480-4-44987-101	REPAIR KIT, 20K C/O	EA	1																			
17	5340-00-720-8864	4-CLAMP, SEALING 3"	EA																				
18	5340-00-720-8863	2-CLAMP, SEALING 5"	EA																				
19	5340-00-720-8858	2-CLAMP, SEAL 7-1/2"	EA																				
20	5330-00-612-2414	2-GASKET, CPLNG 2"	EA																				
21	5330-00-899-4509	2-GASKET, CPLNG 4"	EA																				
22	5330-01-141-1864	2-GASKET, FLANGE 4"	EA																				
23	MS9021-383	2- O-RING (SMALL)	EA																				
24	MS29513-250	2- O-RING (LARGE)	EA																				
25	5510-00-255-9493	2-PLUG, TAPER 3"	EA																				
26	5510-00-255-9492	2-PLUG, TAPER 5"	EA																				
27	PN 1148	VALVE, GATE 1/2" DRAIN	EA	1																			
28	480-4-44917-101	VENT ASSY, COUPLER	EA	1																			

JAN, 1989

2006



INVENTORY SHEET

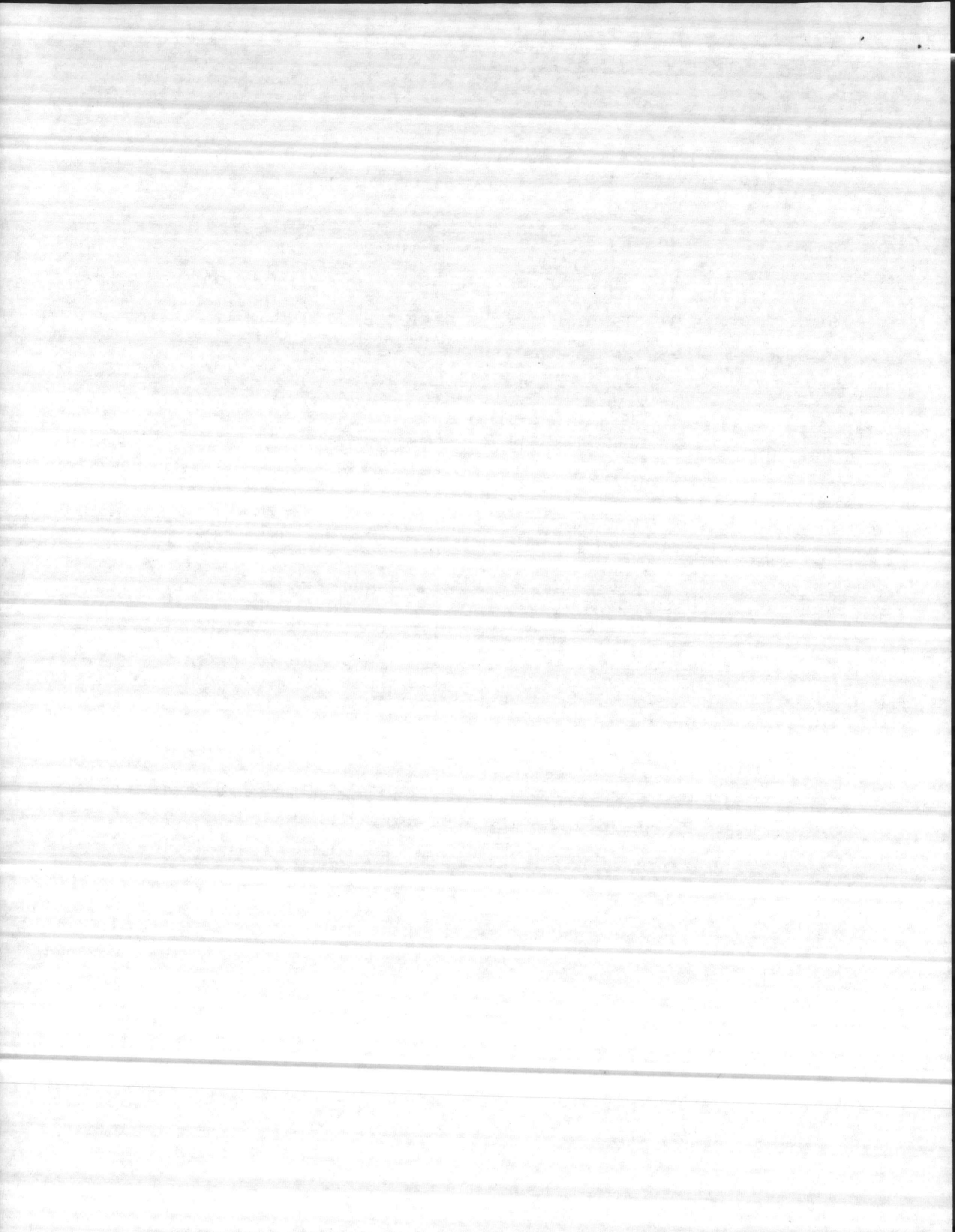
NAME OF EQUIPMENT: WATER TANK ASSEMBLY, FABRIC, COLLAPSIBLE 20K
 (B2632 TAMCN)

SERIAL# 002
 PUB DATE 870129

JAN 1987

ITEM NO	STOCK NUMBER	(NOTE) F = FEMALE M = MALE FL = FLANGED ITEM IDENTIFICATION	UNIT OF MEAS	QTY USED IN UNIT	MONTH												REMARKS						
					6	7	8	9	10	11	12	1	2	3	4	5							
					A	B	C	D	E	F	G	H	I	J	K	L	M	N	O	P	Q	R	
1	FN 40BA90AL	ELBOW, 4" X 90° F X M	EA	1	✓	✓	✓	✓	✓	✓	✓	✓	✓	✓	✓	✓	✓	✓	✓	✓	✓	✓	
2	FN 40BB90AL	ELBOW, 4" X 90° F X F	EA	1	✓	✓	✓	✓	✓	✓	✓	✓	✓	✓	✓	✓	✓	✓	✓	✓	✓	✓	
3		GATE VALVE ASSY 4" C/O	EA	1	✓	✓	✓	✓	✓	✓	✓	✓	✓	✓	✓	✓	✓	✓	✓	✓	✓	✓	
4	4820-01-159-0439	1-VALVE, GATE, FLNGD 4"	EA		✓	✓	✓	✓	✓	✓	✓	✓	✓	✓	✓	✓	✓	✓	✓	✓	✓	✓	
5	4730-00-840-5347	1-CPLNG HALF 4" FLTOM	EA		✓	✓	✓	✓	✓	✓	✓	✓	✓	✓	✓	✓	✓	✓	✓	✓	✓	✓	
6	4730-00-840-5348	1-CPLNG HALF 4" FLTOF	EA		✓	✓	✓	✓	✓	✓	✓	✓	✓	✓	✓	✓	✓	✓	✓	✓	✓	✓	
7	4730-00-640-6156	1-CAP, DUST 4" F	EA		✓	✓	✓	✓	✓	✓	✓	✓	✓	✓	✓	✓	✓	✓	✓	✓	✓	✓	
8	4730-00-640-6188	1-CAP, DUST 4" M	EA		✓	✓	✓	✓	✓	✓	✓	✓	✓	✓	✓	✓	✓	✓	✓	✓	✓	✓	
9	5330-01-141-1864	2-GASKET, FLANGE 4"	EA		✓	✓	✓	✓	✓	✓	✓	✓	✓	✓	✓	✓	✓	✓	✓	✓	✓	✓	
10	5310-00-732-0558	16-NUT, PLAIN, HEX	EA		✓	✓	✓	✓	✓	✓	✓	✓	✓	✓	✓	✓	✓	✓	✓	✓	✓	✓	
11	5305-00-269-3215	16-SCREW, CAP, HEX	EA		✓	✓	✓	✓	✓	✓	✓	✓	✓	✓	✓	✓	✓	✓	✓	✓	✓	✓	
12	5310-00-080-6004	16-WASHER, FLAT	EA		✓	✓	✓	✓	✓	✓	✓	✓	✓	✓	✓	✓	✓	✓	✓	✓	✓	✓	
13	5310-00-637-9541	16-WASHER, LOCK	EA		✓	✓	✓	✓	✓	✓	✓	✓	✓	✓	✓	✓	✓	✓	✓	✓	✓	✓	
14	FN 0758370	HOSE ASSY, DRAIN 3/4"	EA	1	✓	✓	✓	✓	✓	✓	✓	✓	✓	✓	✓	✓	✓	✓	✓	✓	✓	✓	
15	4720-01-163-4685	HOSE ASSY, SUC 4" X 10'	EA	1	✓	✓	✓	✓	✓	✓	✓	✓	✓	✓	✓	✓	✓	✓	✓	✓	✓	✓	
16	480-4-44987-101	REPAIR KIT, 20K C/O	EA	1	✓	✓	✓	✓	✓	✓	✓	✓	✓	✓	✓	✓	✓	✓	✓	✓	✓	✓	
17	5340-00-720-8864	4-CLAMP, SEALING 3"	EA		✓	✓	✓	✓	✓	✓	✓	✓	✓	✓	✓	✓	✓	✓	✓	✓	✓	✓	
18	5340-00-720-8863	2-CLAMP, SEALING 5"	EA		✓	✓	✓	✓	✓	✓	✓	✓	✓	✓	✓	✓	✓	✓	✓	✓	✓	✓	
19	5340-00-720-8858	2-CLAMP, SEAL 7-1/2"	EA		✓	✓	✓	✓	✓	✓	✓	✓	✓	✓	✓	✓	✓	✓	✓	✓	✓	✓	
20	5330-00-612-2414	2-GASKET, CPLNG 2"	EA		✓	✓	✓	✓	✓	✓	✓	✓	✓	✓	✓	✓	✓	✓	✓	✓	✓	✓	
21	5330-00-899-4509	2-GASKET, CPLNG 4"	EA		✓	✓	✓	✓	✓	✓	✓	✓	✓	✓	✓	✓	✓	✓	✓	✓	✓	✓	
22	5330-01-141-1864	2-GASKET, FLANGE 4"	EA		✓	✓	✓	✓	✓	✓	✓	✓	✓	✓	✓	✓	✓	✓	✓	✓	✓	✓	
23	MS9021-383	2- O-RING (SMALL)	EA		✓	✓	✓	✓	✓	✓	✓	✓	✓	✓	✓	✓	✓	✓	✓	✓	✓	✓	
24	MS29513-250	2- O-RING (LARGE)	EA		✓	✓	✓	✓	✓	✓	✓	✓	✓	✓	✓	✓	✓	✓	✓	✓	✓	✓	
25	5510-00-255-9493	2-PLUG, TAPER 3"	EA		✓	✓	✓	✓	✓	✓	✓	✓	✓	✓	✓	✓	✓	✓	✓	✓	✓	✓	
26	5510-00-255-9492	2-PLUG, TAPER 5"	EA		✓	✓	✓	✓	✓	✓	✓	✓	✓	✓	✓	✓	✓	✓	✓	✓	✓	✓	
27	FN 1148	VALVE, GATE 1/2" DRAIN	EA	1	✓	✓	✓	✓	✓	✓	✓	✓	✓	✓	✓	✓	✓	✓	✓	✓	✓	✓	
28	480-4-44917-101	VENT ASSY, COUPLER	EA	1	✓	✓	✓	✓	✓	✓	✓	✓	✓	✓	✓	✓	✓	✓	✓	✓	✓	✓	

2005



JAN 1987

TM 5-5430-226-12

Section II. COMPONENTS OF END ITEM

(1) Illus Number	(2) National Stock Number	(3) Description CAGEC and Part Number	Usable on Code	(4) U/M	(5) Qty Rqd
1		DRAIN HOSE ASSEMBLY (80691) BA89086	ETQ	EA	1
1.1		DRAIN HOSE ASSEMBLY (81348) ZZ-H-601-3-2-32-008	FLP, FLQ	EA	1
2		ELBOW, QUICK DISCONNECT, 90 DEG, 4-IN FEMALE X FEMALE (80691) 40BB90AL		EA	1
3		ELBOW, QUICK DISCONNECT, 90 DEG, 4-IN FEMALE X MALE (80691) 40BA90AL		EA	1
4		FITTING ASSEMBLY, VENT REFBR TO I.GURE 2 IN Th 10-5430-226-20P		EA	1
5	5330-00-064-2072	GASKET, 4-INCH FLANGE (81718) C2479M		EA	2
6	5330-00-612-2414	GASKET, QUICK DISCONNECT COUPLING (96906) MS27030-6		EA	2
7	5330-00-899-4509	GASKET, QUICK DISCONNECT COUPLING (96906) MS27030-9		EA	2
8		GATE VALVE ASSEMBLY 4-INCH (41592) 235AF-O500AV		EA	1
9	4820-00-595-1842	GATE VALVE, 1/2-INCH (76364) 1148-1/2	ETQ	EA	1
9.1		BALL VALVE, 2-INCH (57661) 82-108	FLP, FLQ	EA	1
10		GROUND CLOTH (66618) X-3619B	ETQ, FLP	EA	1
		GROUND CLOTH (05476) 80393	FLQ	EA	1
11	5330-00-250-0224	PACKING, PREFORMED (96906) MS29513-250		EA	2
12	5330-00-364-9862	PACKING, PREFORMED (96906) MS9021-381		EA	2
13	5430-00641-8957	REPAIR KIT (81349) MIL-R-22368		EA	1
14		TANK, FABRIC, COLLAPSIBLE, 20K (66618) BA88-028	ETQ	EA	1
		TANK, FABRIC, COLLAPSIBLE, 20K (05476) 91011	FLP	EA	1
		TANK, FABRIC, COLLAPSIBLE, 50K (05476) 91005-1	FLQ	EA	1

