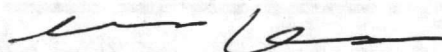
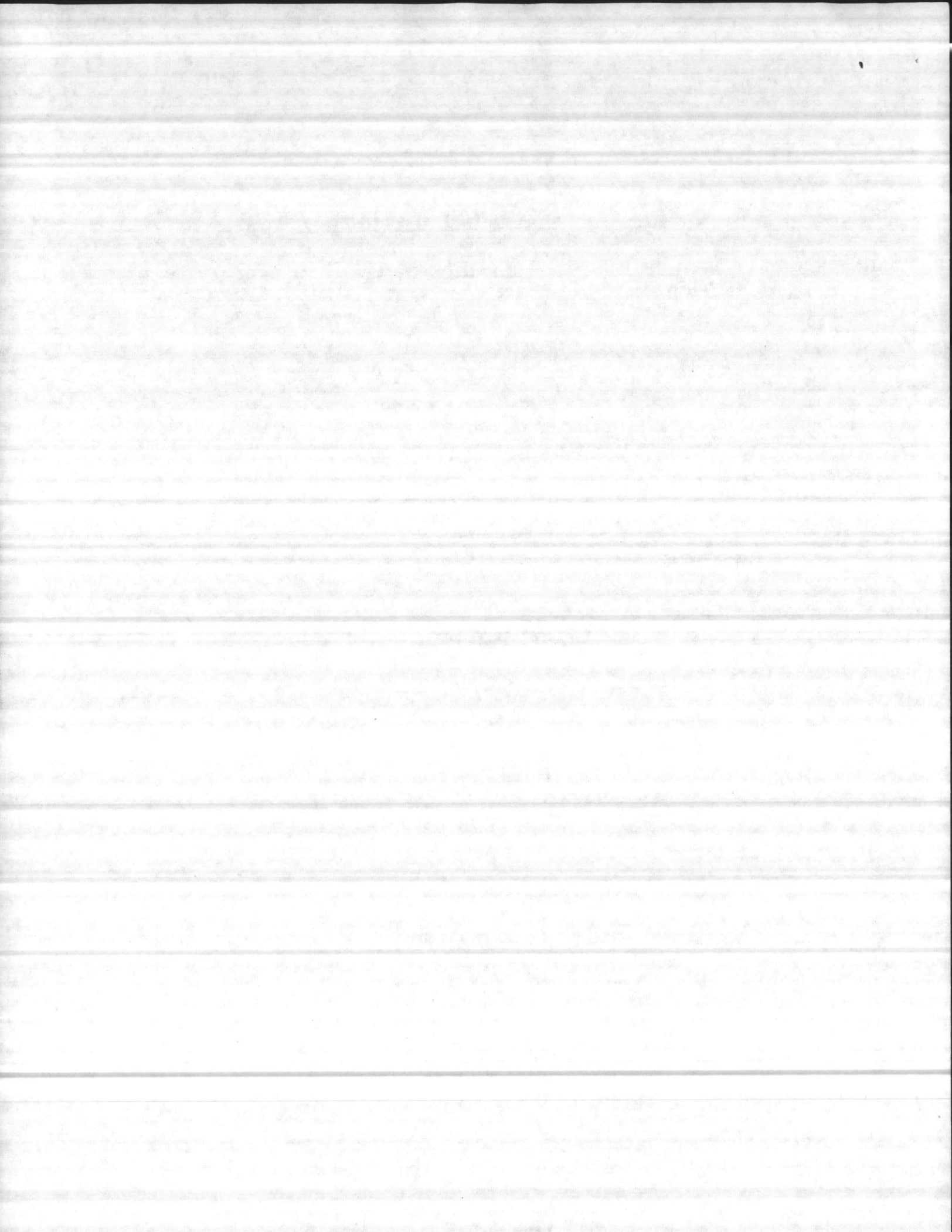


2006

**SL-3 INVENTORY SIGNATURE PAGE**

MONTH	INVENTORIED BY (PRINTED NAME)	SUPERVISED BY (PRINTED NAME)	SIGNATURE
JAN	_____	_____	_____
FEB	_____	_____	_____
MAR	_____	_____	_____
APR	_____	_____	_____
MAY	<i>Lt Pl Sheman</i>	<i>Sgt Webb</i>	
JUN	_____	_____	_____
JUL	_____	_____	_____
AUG	_____	_____	_____
SEP	_____	_____	_____
OCT	_____	_____	_____
NOV	_____	_____	_____
DEC	_____	_____	_____



# Inventory Legend

✓ - Accounted For

M - Missing

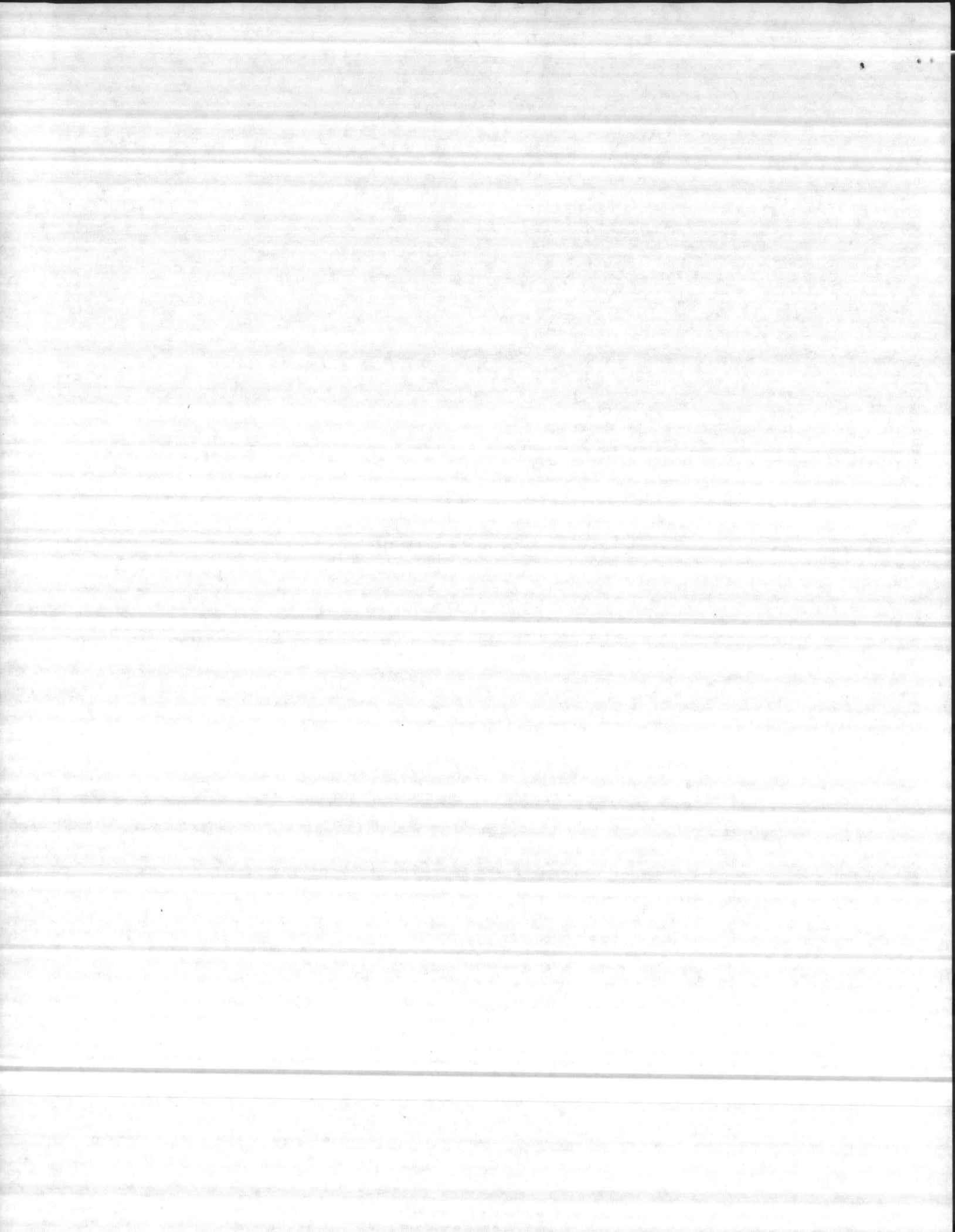
A/R - As Required

---

N/A - Not Applicable

U - Unserviceable

I - Incomplete





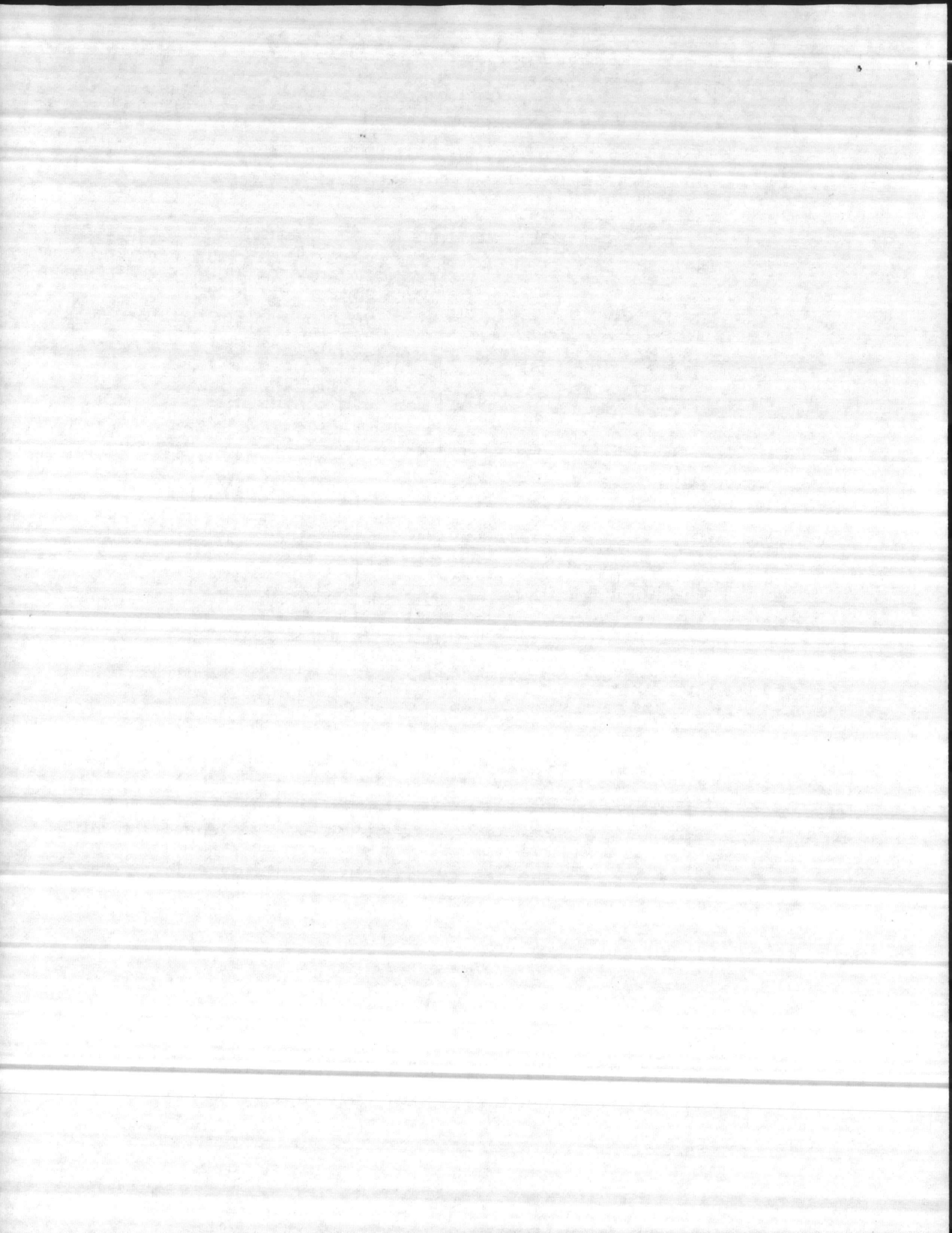
INVENTORY SHEET

NAME OF EQUIPMENT: WATER TANK ASSEMBLY, FABRIC, COLLAPSIBLE 20K  
 SAN 1987 (B2632 TAMCN)

SERIAL# 0025  
 PUB DATE 870129

ITEM NO	STOCK NUMBER	(NOTE) F = FEMALE M = MALE FL = FLANGED ITEM IDENTIFICATION	UNIT OF MEAS	QTY USED IN UNIT	MONTH												REMARKS
					JAN	FEB	MAR	APR	MAY	JUN	JUL	AUG	SEP	OCT	NOV	DEC	
1	PN 40BA90AL	ELBOW, 4" X 90° F X M	EA	1					✓								
2	PN 40BB90AL	ELBOW, 4" X 90° F X F	EA	1					✓								
3		GATE VALVE ASSY 4" C/O	EA	1					✓								
4	4820-01-159-0439	1-VALVE, GATE, FLNGD 4"	EA														
5	4730-00-840-5347	1-CPLNG HALF 4" FLtoM	EA														
6	4730-00-840-5348	1-CPLNG HALF 4" FLtoF	EA														
7	4730-00-640-6156	1-CAP, DUST 4" F	EA														
8	4730-00-640-6188	1-CAP, DUST 4" M	EA														
9	5330-01-141-1864	2-GASKET, FLANGE 4"	EA														
10	5310-00-732-0558	16-NUT, PLAIN, HEX	EA														
11	5305-00-269-3215	16-SCREW, CAP, HEX	EA														
12	5310-00-080-6004	16-WASHER, FLAT	EA														
13	5310-00-637-9541	16-WASHER, LOCK	EA														
14	PN 0758370	HOSE ASSY, DRAIN 3/4"	EA	1					✓								
15	4720-01-163-4685	HOSE ASSY, SUC 4" X 10'	EA	1					✓								
16	480-4-44987-101	REPAIR KIT, 20K C/O	EA	1					✓								
17	5340-00-720-8864	4-CLAMP, SEALING 3"	EA														
18	5340-00-720-8863	2-CLAMP, SEALING 5"	EA														
19	5340-00-720-8858	2-CLAMP, SEAL 7-1/2"	EA														
20	5330-00-612-2414	2-GASKET, CPLNG 2"	EA														
21	5330-00-899-4509	2-GASKET, CPLNG 4"	EA														
22	5330-01-141-1864	2-GASKET, FLANGE 4"	EA														
23	MS9021-383	2- O-RING (SMALL)	EA														
24	MS29513-250	2- O-RING (LARGE)	EA														
25	5510-00-255-9493	2-PLUG, TAPER 3"	EA														
26	5510-00-255-9492	2-PLUG, TAPER 5"	EA														
27	PN 1148	VALVE, GATE 1/2" DRAIN	EA	1					✓								
28	480-4-44917-101	VENT ASSY, COUPLER	EA	1					✓								

2006





**UNITED STATES MARINE CORPS**

8TH ENGINEER SUPPORT BATTALION  
2ND MARINE LOGISTICS GROUP, FMF  
U.S. MARINE CORPS FORCES, ATLANTIC  
PSC BOX 20131  
CAMP LEJEUNE, NORTH CAROLINA 28542-0131

IN REPLY REFER TO:  
4700  
UT/dtc  
20 Jan 06

**MEMORANDUM FOR THE RECORD:**

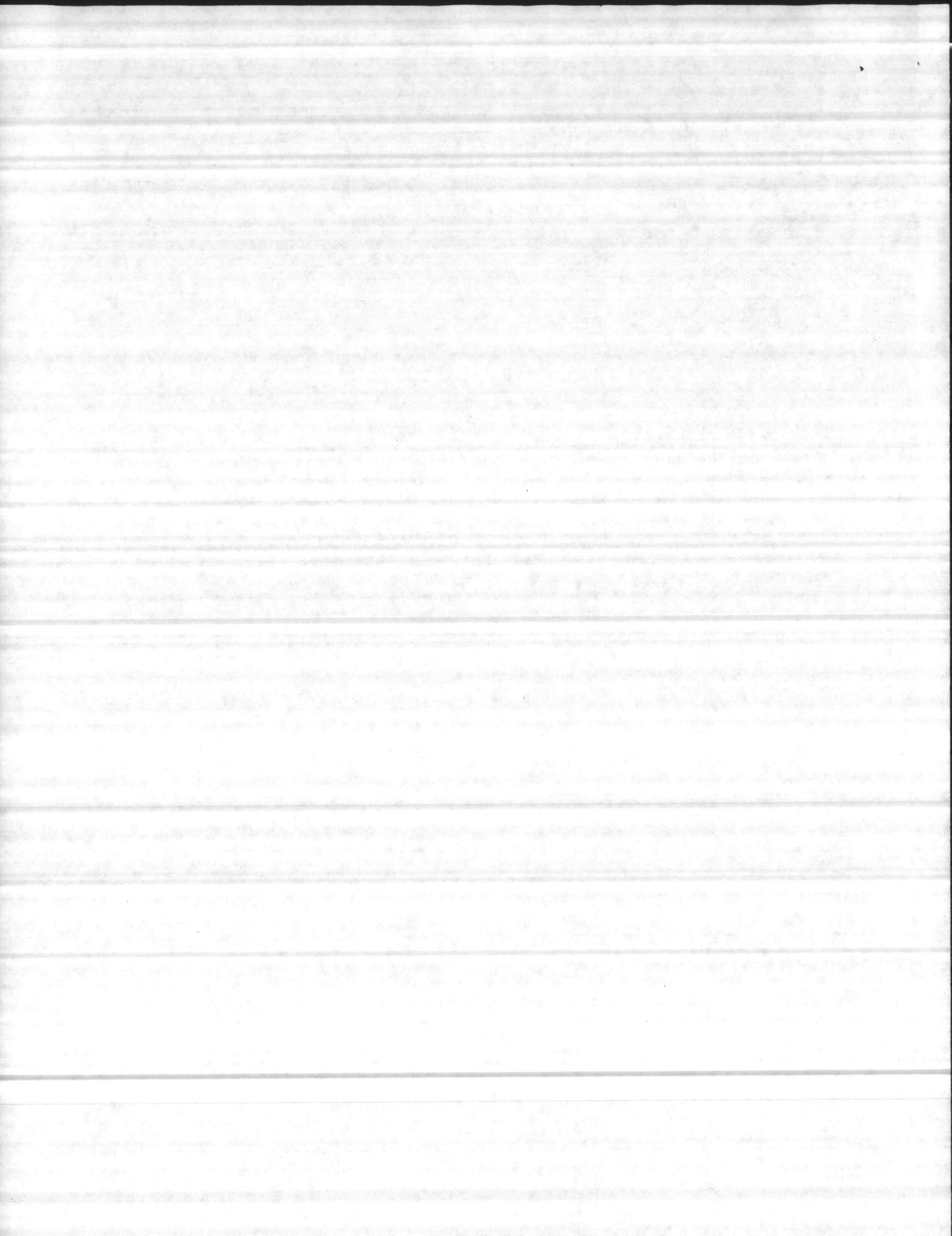
**Subj:** LACK OF SL-3 INVENTORIES FOR THE CALENDAR YEAR OF 2005.

1. 8<sup>th</sup> Engineer Support Battalion deployed to Iraq on Feb. 28<sup>th</sup>, 2005. During the eight month deployment the Battalion did not have the adequate amount of personnel here to do SL-3 inventories. Prior to the deployment 8<sup>th</sup> Engineer Battalion took part in several Pre-deployment field exercises dating back to the first week of January. Upon returning from the deployment to Iraq the Marines of the Battalion spent the next two months reconstructing the entire MIMMS system finally getting to the complete inventory of all gear requiring SL-3 Inventories in January of 2006. All deficiencies were corrected per the 4700-15/1H.

2. Any questions pertaining to this matter can be addressed by contacting CWO3 Morris at ext. 451-8590.

*M.S. Morris*  
M.S. MORRIS







Jan 1987

Section II. COMPONENTS OF END ITEM

Jan 1987

(1) Illus Number	(2) National Stock Number	(3) Description CAGEC and Part Number	Usable on Code	(4) U/M	(5) Qty Rqd
1		DRAIN HOSE ASSEMBLY (80691) BA89086	ETQ	EA	1
1.1		DRAIN HOSE ASSEMBLY (81348) ZZ-H-601-3-2-32-008	FLP, FLQ	EA	1
2		ELBOW, QUICK DISCONNECT, 90 DEG, 4-IN FEMALE X FEMALE (80691) 40BB90AL		EA	1
3		ELBOW, QUICK DISCONNECT, 90 DEG, 4-IN FEMALE X MALE (80691) 40BA90AL		EA	1
4		FITTING ASSEMBLY, VENT REFBR TO I.GURE 2 IN Th 10-5430-226-20P		EA	1
5	5330-00-064-2072	GASKET, 4-INCH FLANGE (81718) C2479M		EA	2
6	5330-00-612-2414	GASKET, QUICK DISCONNECT COUPLING (96906) MS27030-6		EA	2
7	5330-00-899-4509	GASKET, QUICK DISCONNECT COUPLING (96906) MS27030-9		EA	2
8		GATE VALVE ASSEMBLY 4-INCH (41592) 235AF-O500AV		EA	1
9	4820-00-595-1842	GATE VALVE, 1/2-INCH (76364) 1148-1/2	ETQ	EA	1
9.1		BALL VALVE, 2-INCH (57661) 82-108	FLP, FLQ	EA	1
10		GROUND CLOTH (66618) X-3619B	ETQ, FLP	EA	1
		GROUND CLOTH (05476) 80393	FLQ	EA	1
11	5330-00-250-0224	PACKING, PREFORMED (96906) MS29513-250		EA	2
12	5330-00-364-9862	PACKING, PREFORMED (96906) MS9021-381		EA	2
13	5430-00641-8957	REPAIR KIT (81349) MIL-R-22368		EA	1
14		TANK, FABRIC, COLLAPSIBLE, 20K (66618) BA88-028	ETQ	EA	1
		TANK, FABRIC, COLLAPSIBLE, 20K (05476) 91011	FLP	EA	1
		TANK, FABRIC, COLLAPSIBLE, 50K (05476) 91005-1	FLQ	EA	1

