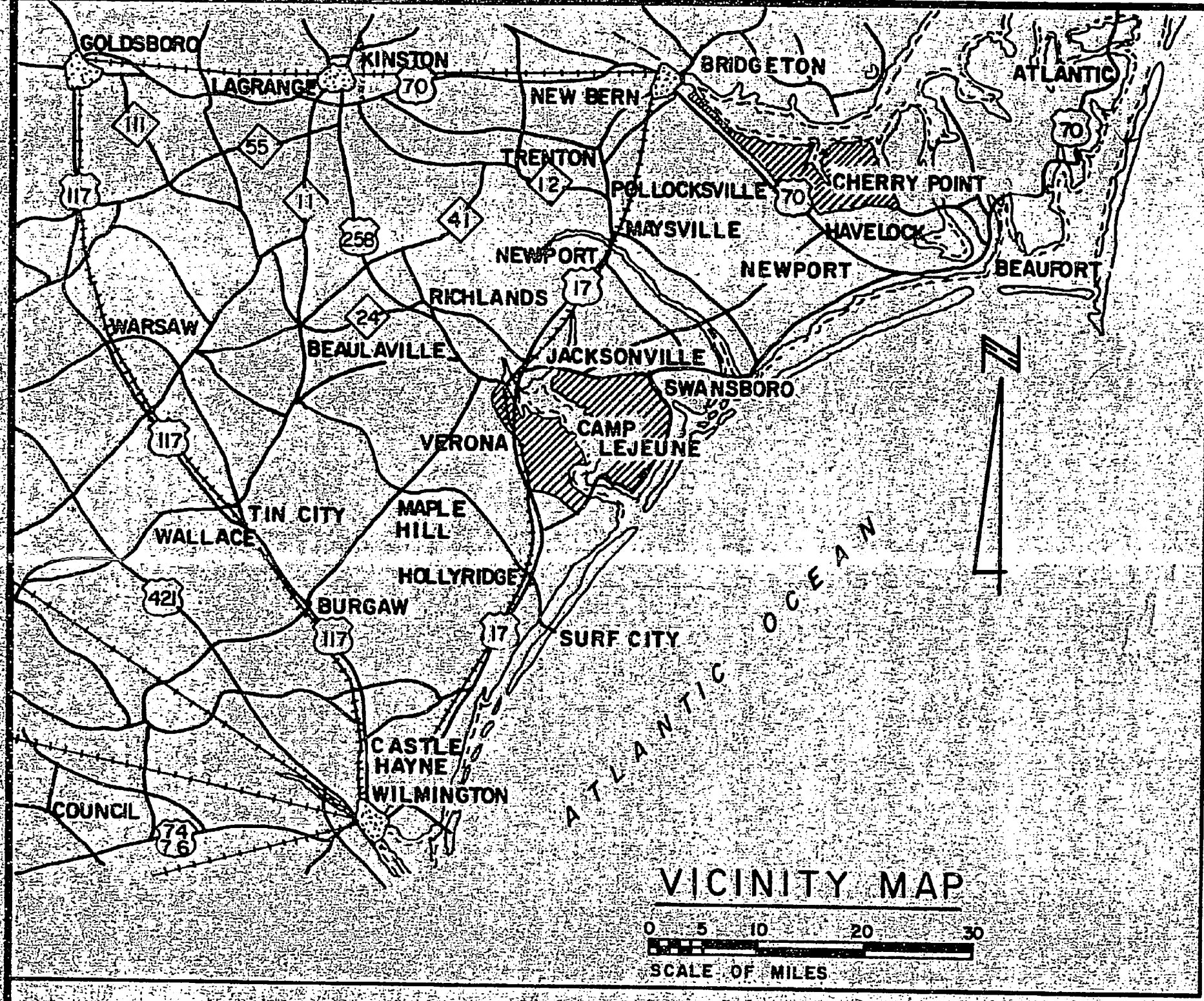


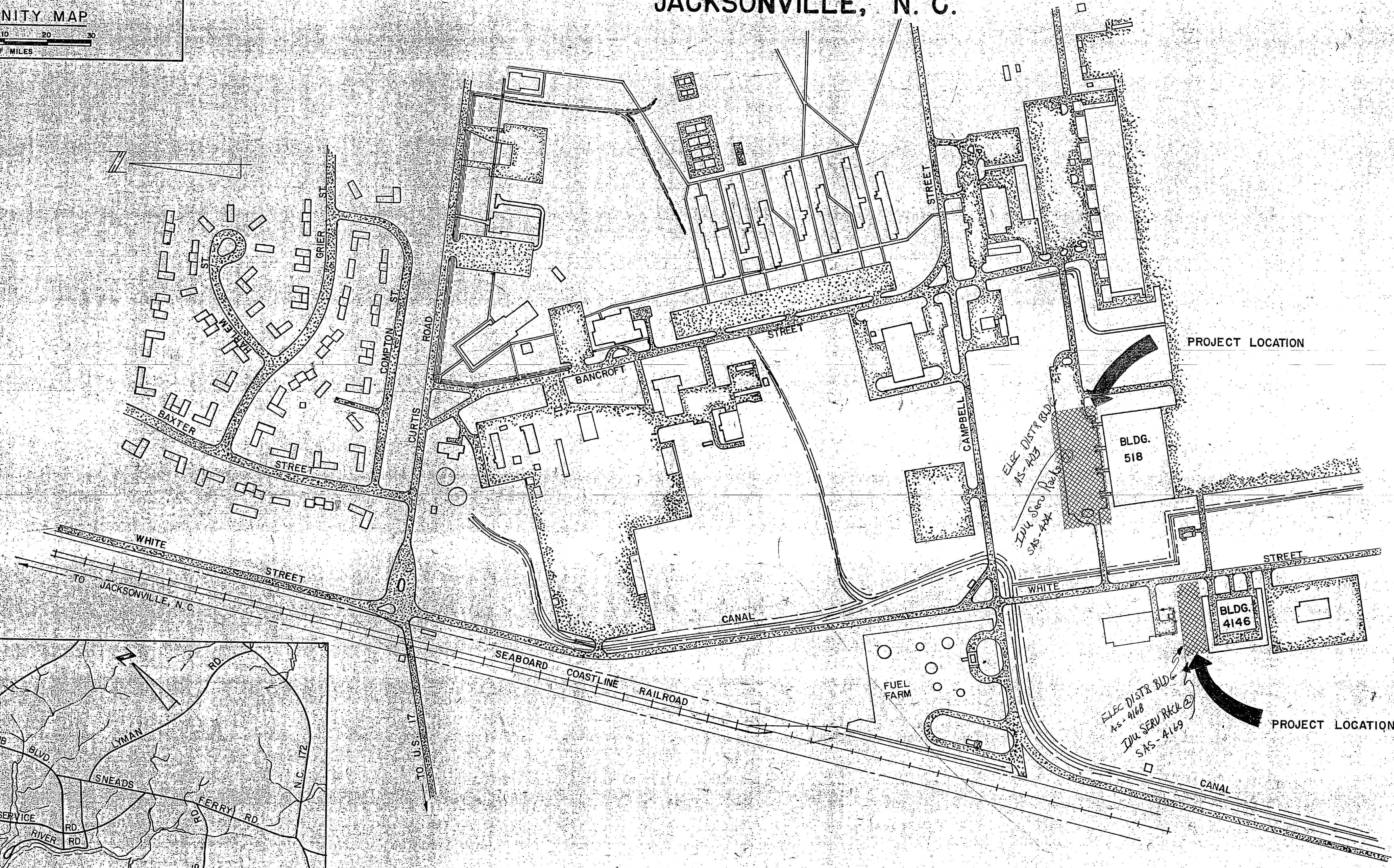
UTILITY SUPPORT FOR MOBILE MAINTENANCE VANS

MCAS (H) NEW RIVER
JACKSONVILLE, N. C.

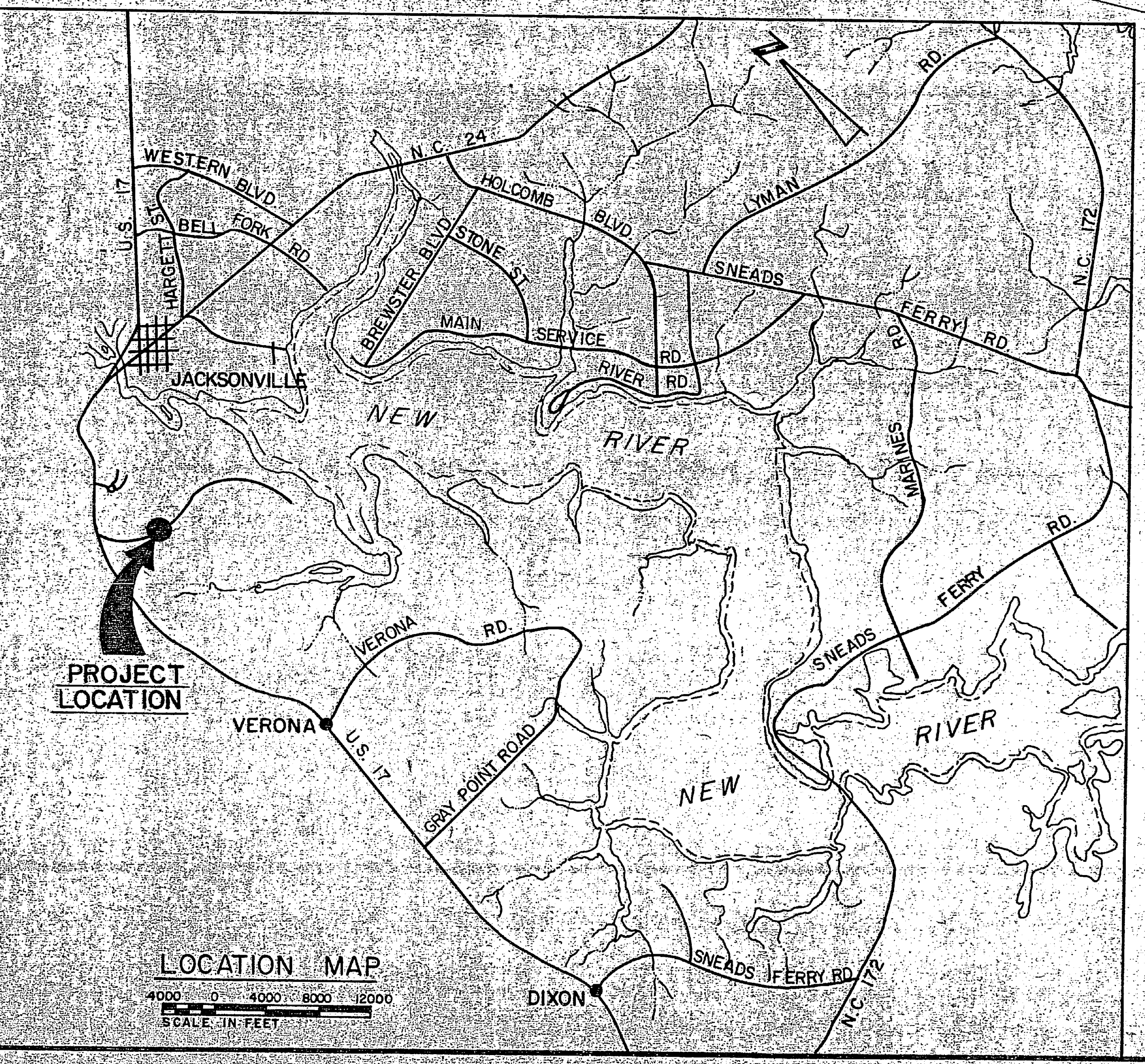


REVISIONS			
SYM	DESCRIPTION	DATE	APPROVED

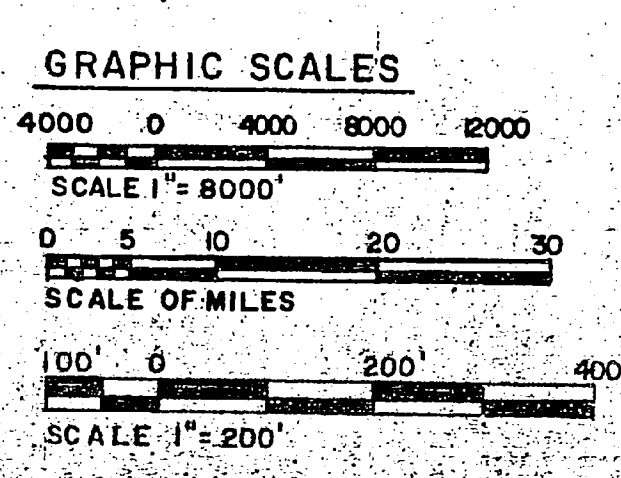
SCHEDULE OF DRAWINGS		
SH NO	NAVFAC DWG NO	TITLE
1	4091126	COVER SHEET
2	4091127	SITE PLAN AND DETAILS
3	4091128	SITE PLAN, RISER DIAGRAM
4	4091129	RISER DIAGRAMS
5	4091130	ELECTRICAL DETAILS
6	4091131	PREFAB METAL BUILDING DETAILS



NEW	LEGEND	EXISTING
-A-	COMPRESSED AIR PIPING	
-GF-	60 AMP FUSIBLE SAFETY SWITCH	
-GNF-	60 AMP NON-FUSIBLE SAFETY SWITCH	
-WP-	WEATHERPROOF	
-L.A.R.	LENGTH AS REQUIRED	
-E.S.	EQUIPMENT GROUND	
-C-	CONDUIT	
-MMV	MOBILE MAINTENANCE VAN	
-INU	INTEGRATION UNIT	
-UNO	UNLESS NOTED OTHERWISE	
-C	CONNECTION NEW TO EXISTING WORK	
-G	DUPLEX GROUNDING RECEPTACLE	
-I	INCANDESCENT LIGHTING FIXTURE	
-S	WALL MOUNTED TOGGLE SWITCH	
-R	SURFACE MOUNTED RACEWAY	
-F	FLEXIBLE CONDUIT	
-V	WATER PIPING	-EW-
-P	AERIAL PRIMARY	-EE-
	AVIATION FUEL PIPING	-EG-
	STORM WATER PIPING	-ES-
	FORCE MAIN	-EFM-
	SANITARY SEWER	-ESS-
	STEAM PIPE (OVERHEAD)	-ES-



PARTIAL SITE PLAN
MCAS (H) NEW RIVER
SCALE 1"=200'



RECORD DRAWING LETTER DATED JAN 14 1985		T-1	
HENRY VON OESSEN AND ASSOCIATES CONSULTING ENGINEERS AND PLANNERS WILMINGTON, NORTH CAROLINA		DEPARTMENT OF THE NAVY NAVAL FACILITIES ENGINEERING COMMAND ATLANTIC DIVISION	
DES. FROM: DR N.G.F. DIR. RDM: CH ENGR. RIVU		NAVAL STATION: MCAS (H) NEW RIVER	
SUBMITTED BY: DATE: 1/14/85		NORFOLK, VIRGINIA	
ITEM NUMBER: RVD: PRINCIPAL		JACKSONVILLE, NORTH CAROLINA	
EFO: FELLOW: RVD: PRINCIPAL		UTILITY SUPPORT FOR MOBILE MAINTENANCE VANS	
APPROVED: DATE: 1/14/85		COVER SHEET	
ACTIVITY - SATISFACTORY TO		NAVFAC DRAWING NO. 4091126	
APPROVED: DATE: 1/14/85		CONSTR. CONTR. NO. W-2470-82-B-2354	
FOR EFO FOR COMMANDER, NAVAL		SCALE: AS SHOWN SPEC. 05-82-2354 SHEET 1 OF 6	



REVISIONS			
SYM	DESCRIPTION	DATE	APPROVED
(A)	REVISED AS-BUILT	01/18/85	EDM

PROVIDE 40' - 2 POLE
 DX-DE-FB, 15 F3-N
 X-FB (FOR XFMR'S PROTECTIVE EQUIP.)
 TTT: 3-100 KVA, 12470Y/1200V
 208/120V CONV. TRANSFORMER WITH
 PROTECTIVE EQUIPMENT. CONNECT Y₂-Y₂
 FOR 208/120V SECONDARY CONNECTION.
 2-4" CONDUIT RISER TYPE B W/ 3-#600 MCM
 & 1-#600 MCM NEUTRAL
 GUY (5/16")
 ANCHOR (10")
 GROUND

PROVIDE 3Ø, 4 WIRE, 12.47/7.2 KV, #6 AWG BARE STRANDED
 COPPER AERIAL PRIMARY EXTENSION FROM EXISTING PRIMARY
 ON WHITE STREET.

ELECTRICAL SERVICE EQUIPMENT NO. 1, SEE
 DETAIL "C", SH. E-1.

MAINTENANCE VANS
 SET ON CROSSIES
 SEE DETAIL "A", SH. C/E-1

ELECTRICAL SERVICE
 EQUIPMENT NO. 2, SEE
 DETAIL "D", SH. E-1.

90 CFM, 150 PSI AIR
 COMPRESSOR

25 KW, 400 HZ MOTOR
 GENERATOR SET

PREFAB METAL BUILDING,
 SEE SH. A-1

EXISTING APPROX. 30' POLE
 EXISTING X-FB, 15 F3-N
 DX-DE-FB, 15 F3-N (TAP TO EXISTING)
 GUY (5/16")
 ANCHOR (10")
 GROUND

PROVIDE 35' - 2 POLE
 X-FB, 15 F3-N
 GROUND

PROVIDE 3Ø, 4 WIRE, 12.47/7.2KV, #6 AWG BARE STRANDED COPPER
 AERIAL PRIMARY TAP FROM EXISTING PRIMARY

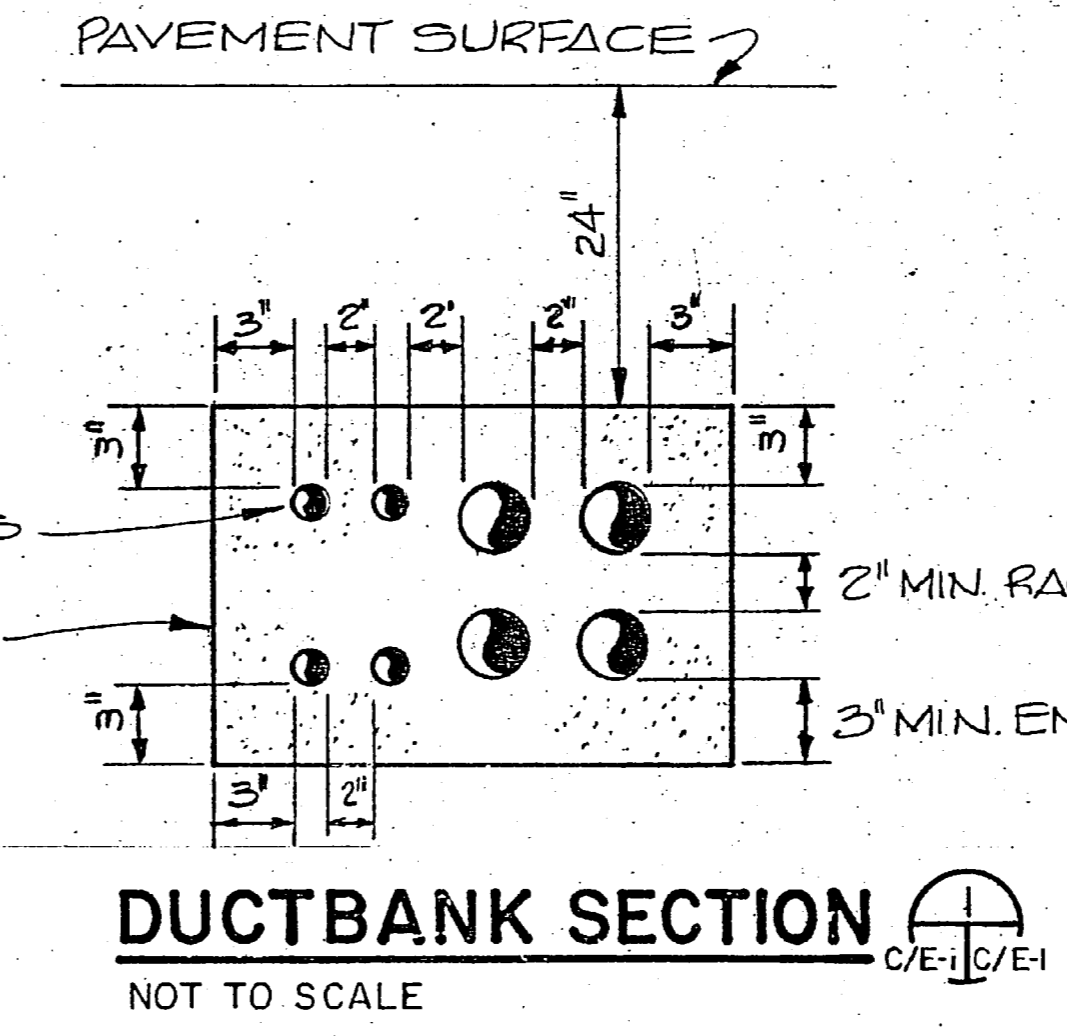
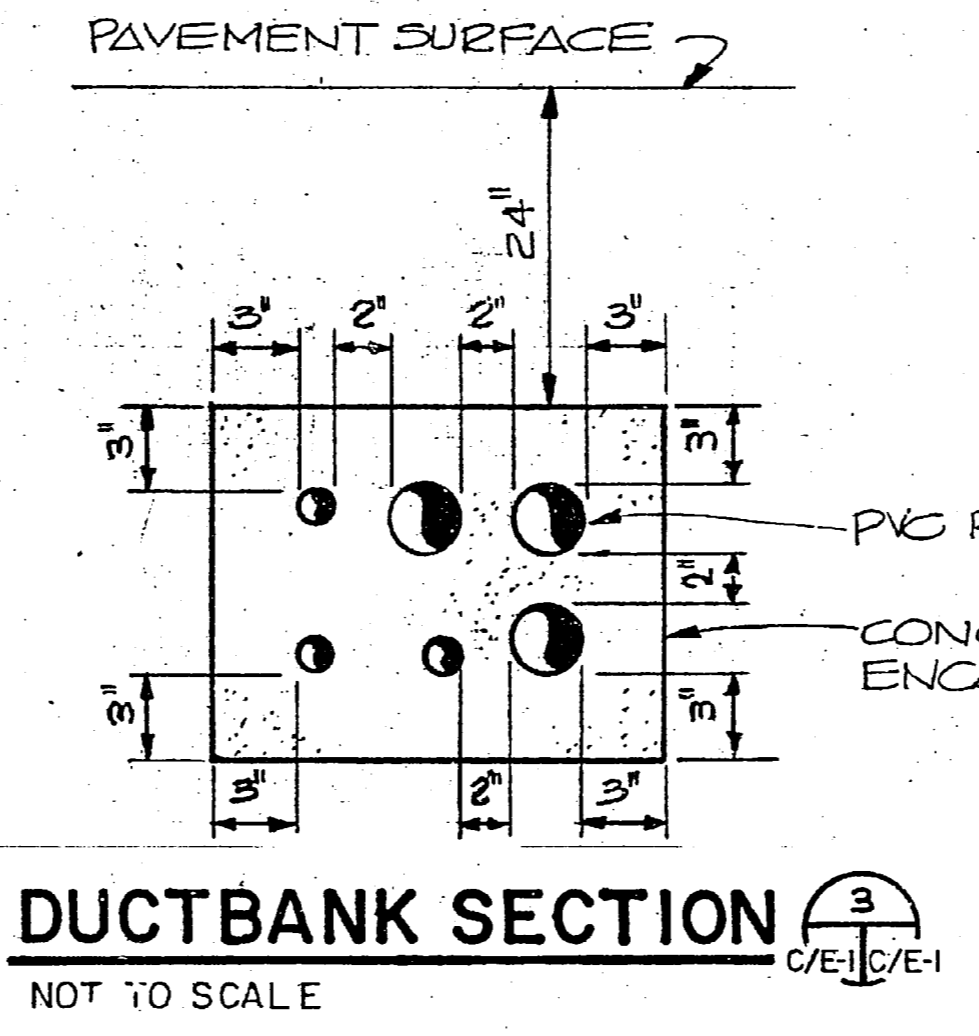
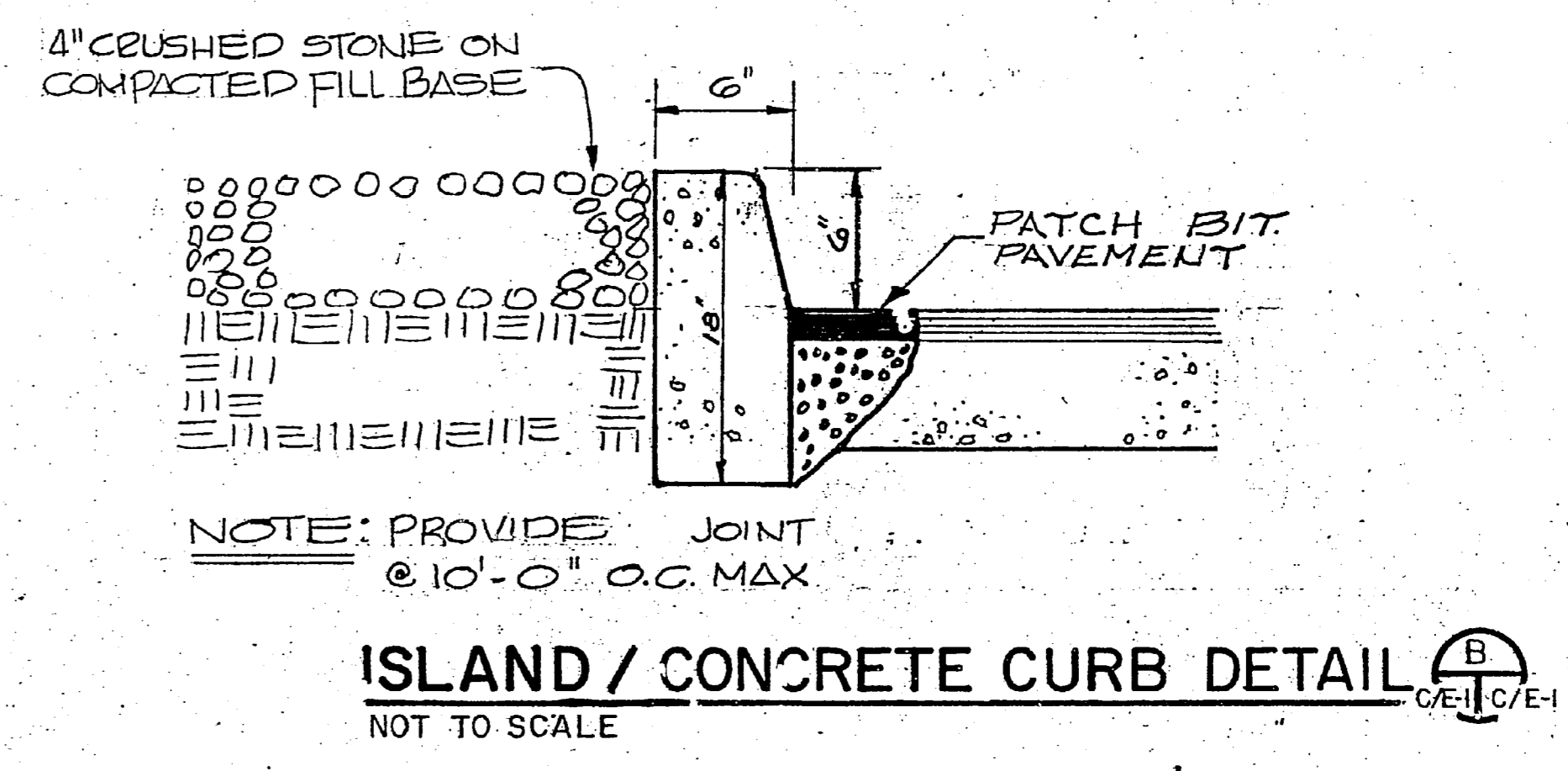
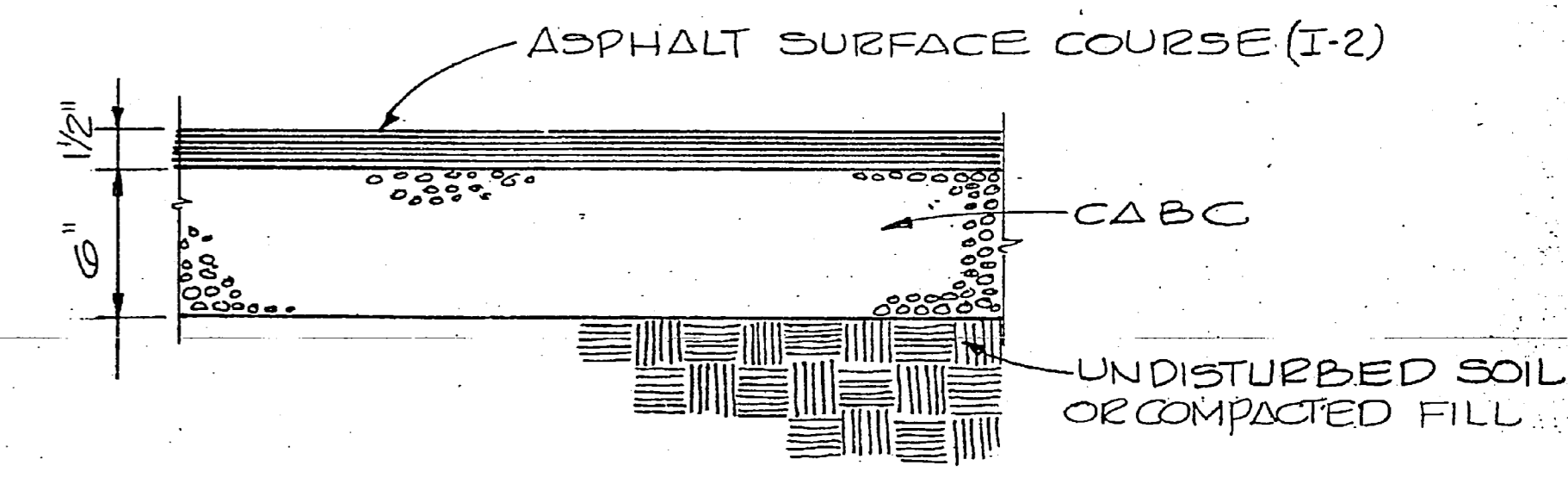
EXISTING ACCESS ROAD TO BLDG. 518 PARKING LOT

CONTROL PANEL RACK, SEE DETAILS
 "A" & "C" ON SH. E-1.

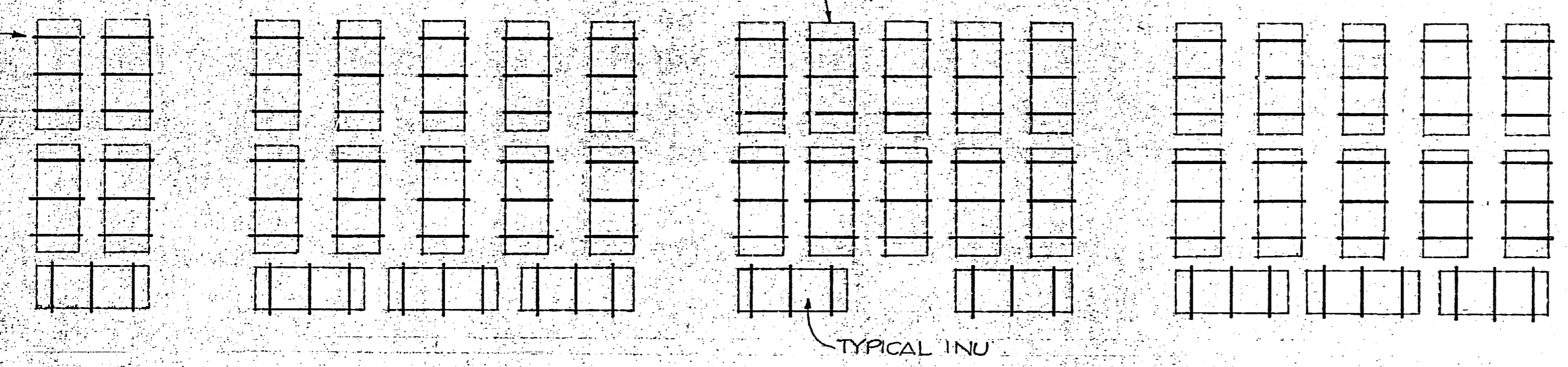
1" CHAMFER
 6"x6"x1/2"x1/2"x1/2"
 WOVEN WIRE MESH

M-G SET IN W.P. ENCL.
 SIZE PAD FOR 6" MIN
 CLEARANCE ON ALL SIDES
 AROUND M-G SET.

PLAN SECTION
M-G SET CONCRETE PAD DETAILS (C)
 NOT TO SCALE

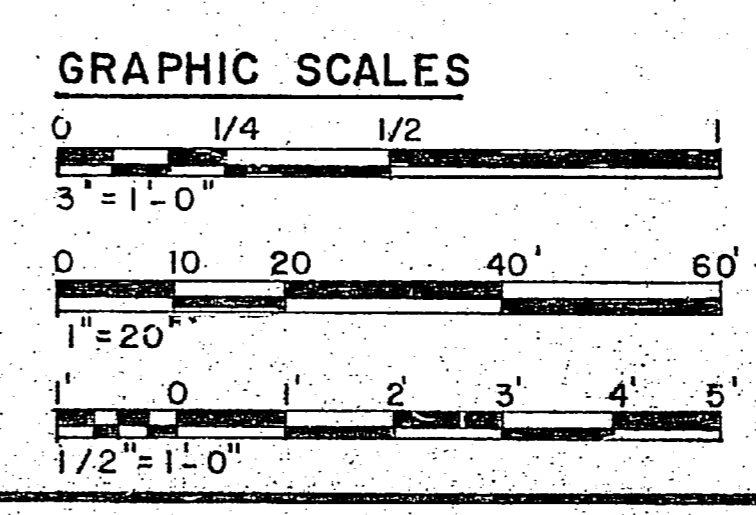


CROSSIE PLACEMENT DETAIL (A)
 SCALE 1"=20'



SITE PLAN BLDG 518
 SCALE 1"=20'

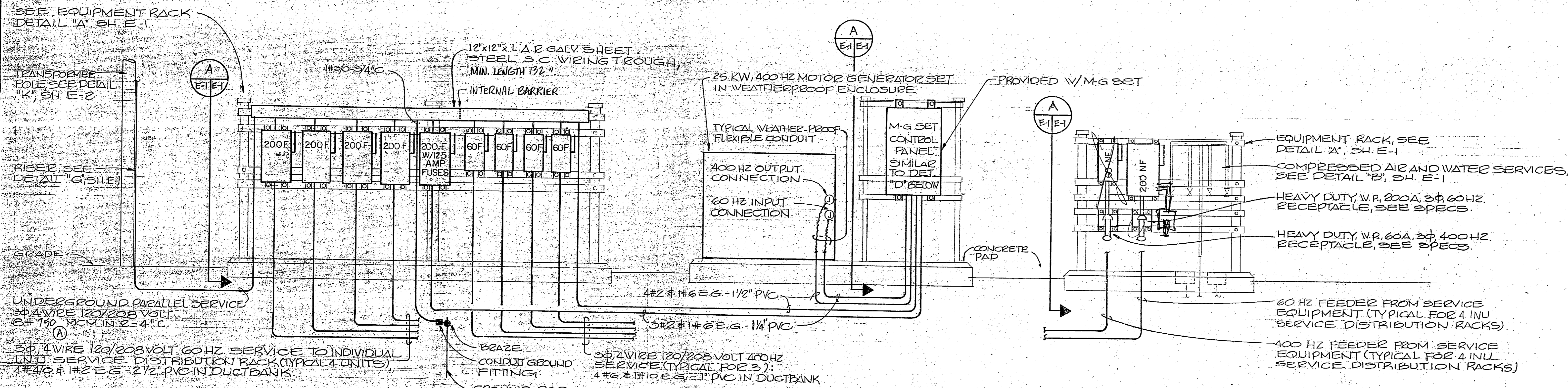
TYPICAL 10' CROSSIE,
 3 REQUIRED PER
 VAN, SEE SPECS.
 COORDINATE
 PLACEMENT WITH
 APOICC



RECORD DRAWING LETTER DATED JAN 10 1985		C/E-1	
HENRY VON OESSEN AND ASSOCIATES CONSULTING ENGINEERS AND PLANNERS WILMINGTON, NORTH CAROLINA		DEPARTMENT OF THE NAVY NAVAL FACILITIES ENGINEERING COMMAND ATLANTIC DIVISION NAVAL STATION MCAS (H) NEW RIVER JACKSONVILLE, NORTH CAROLINA	
DES. RDM DR. CTJ CHK. RDM PROJ. MGR. RDM CH. ENGR. HVD SUBMITTED BY: DATE FIRM MEMBER: PRINCIPAL		UTILITY SUPPORT FOR MOBILE MAINTENANCE VANS	
APPROVED: DATE ACTIVITY - SATISFACTORY TO		SITE PLAN AND DETAILS	
APPROVED: DATE		SIZE: CODE IDENT. NO. F 80091	
FOR THE NAVY COMMANDING OFFICER		NAVFAC DRAWING NO. 4091127	
		CONSTR. CONTR. NO. 182470-82-B-2354	
		SCALE: SPEC. 05-82-2354 SHEET 2 OF 6	

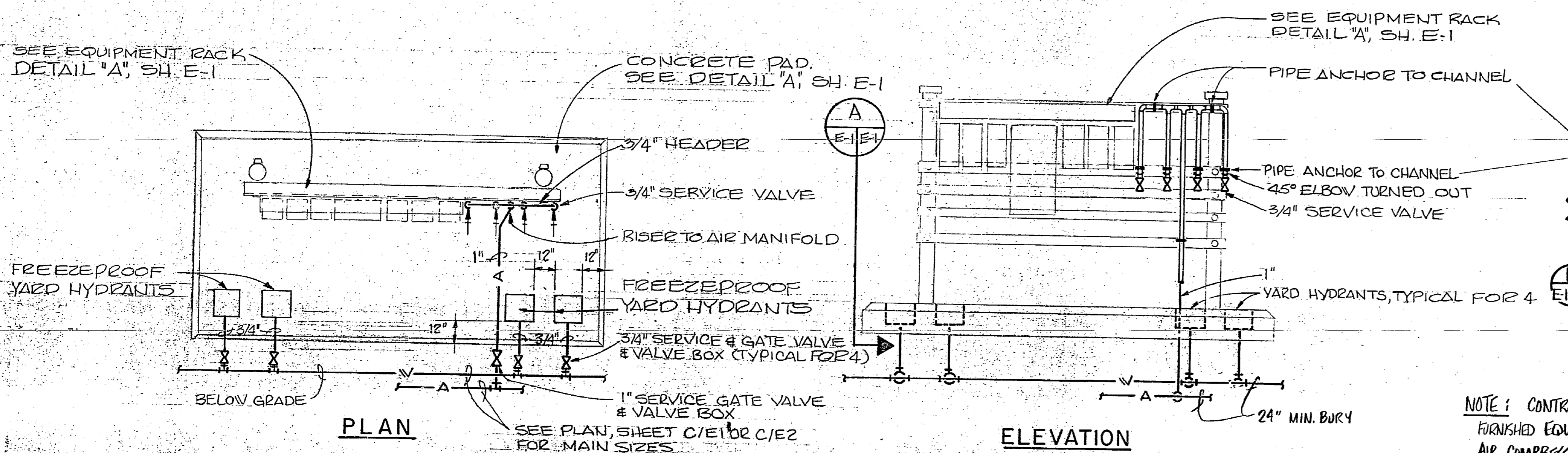


REVISIONS			
SYM	DESCRIPTION	DATE	APPROVED
(A)	REVISED AS-BUILT	2/14/85	EDM



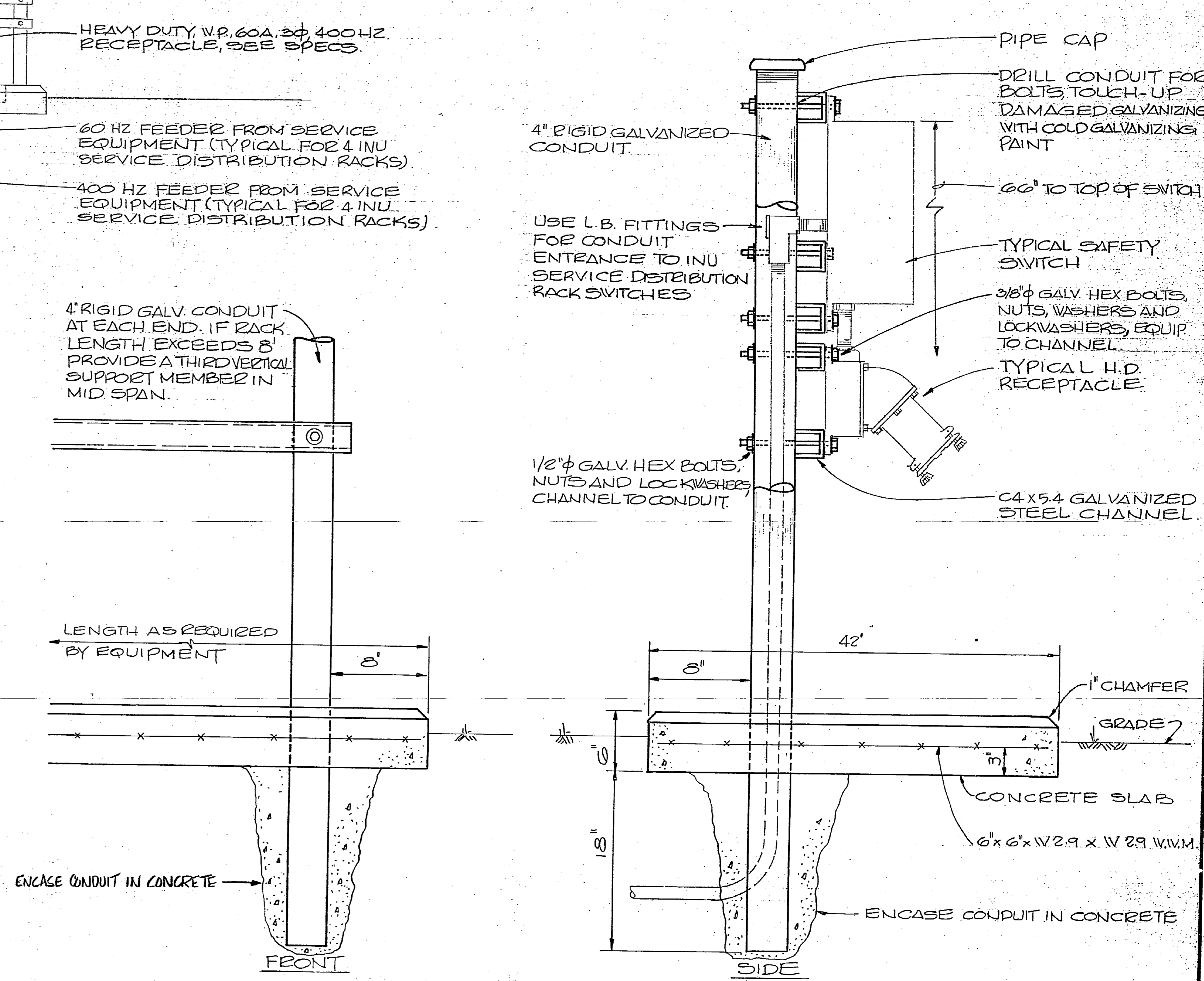
POWER RISER DIAGRAM FOR SERVICE EQUIPMENT NO. 1
NOT TO SCALE

NOTE: WIRING TROUGH TAPS TO LINE SIDE OF SWITCHES SHALL BE THE SAME SIZE AS THE LOAD SIDE FEEDER AND SHALL EACH BE CONNECTED TO BOTH PARALLEL SERVICE CONDUCTORS. PROVIDE FUSES PER SWITCH AMPACITY U.N.C.

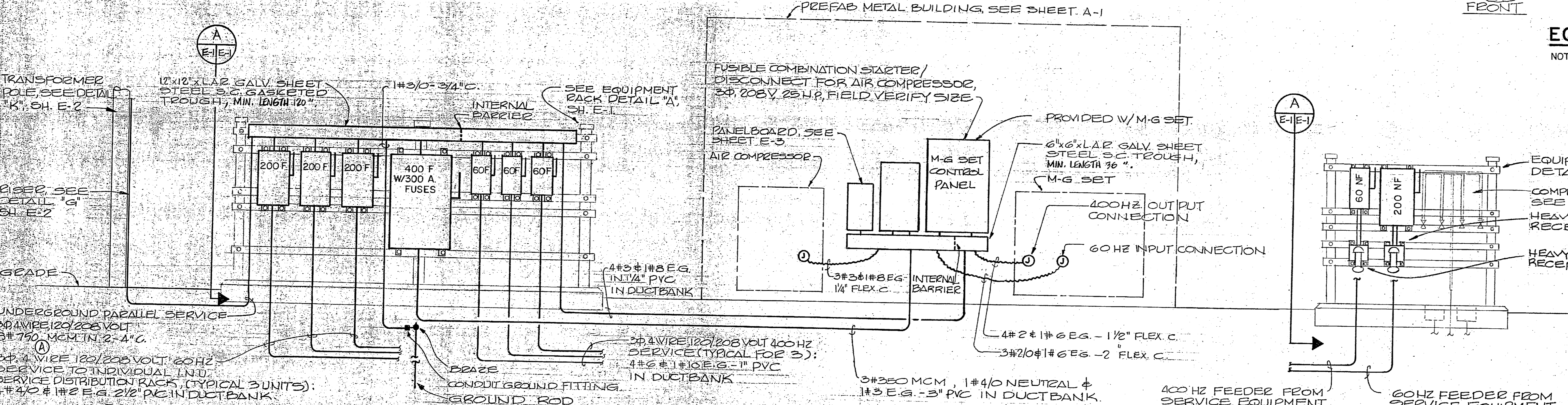


COMPRESSED AIR AND WATER SERVICES AT INU SERVICE DISTRIBUTION RACKS
NOT TO SCALE

NOTE: CONTRACTOR CONNECTIONS TO GOVERNMENT FINISHED EQUIPMENT, G.F.E., (M-G SETS AND/OR AIR COMPRESSORS) IF APPLICABLE, SHALL BE TO CONNECTION POINTS SHOWN "O".



EQUIPMENT RACK DETAIL
NOT TO SCALE

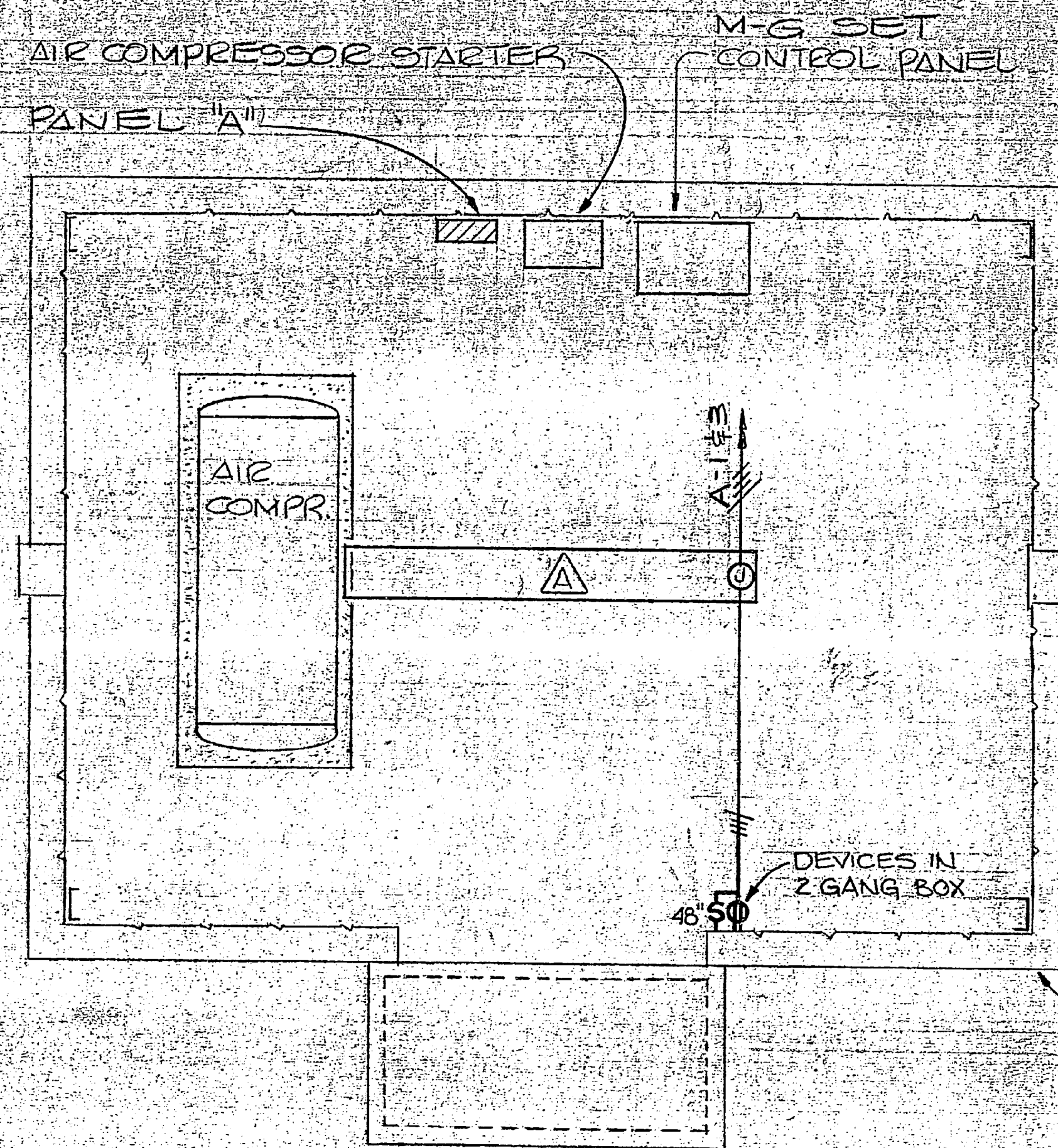


POWER RISER DIAGRAM FOR SERVICE EQUIPMENT NO. 2
NOT TO SCALE

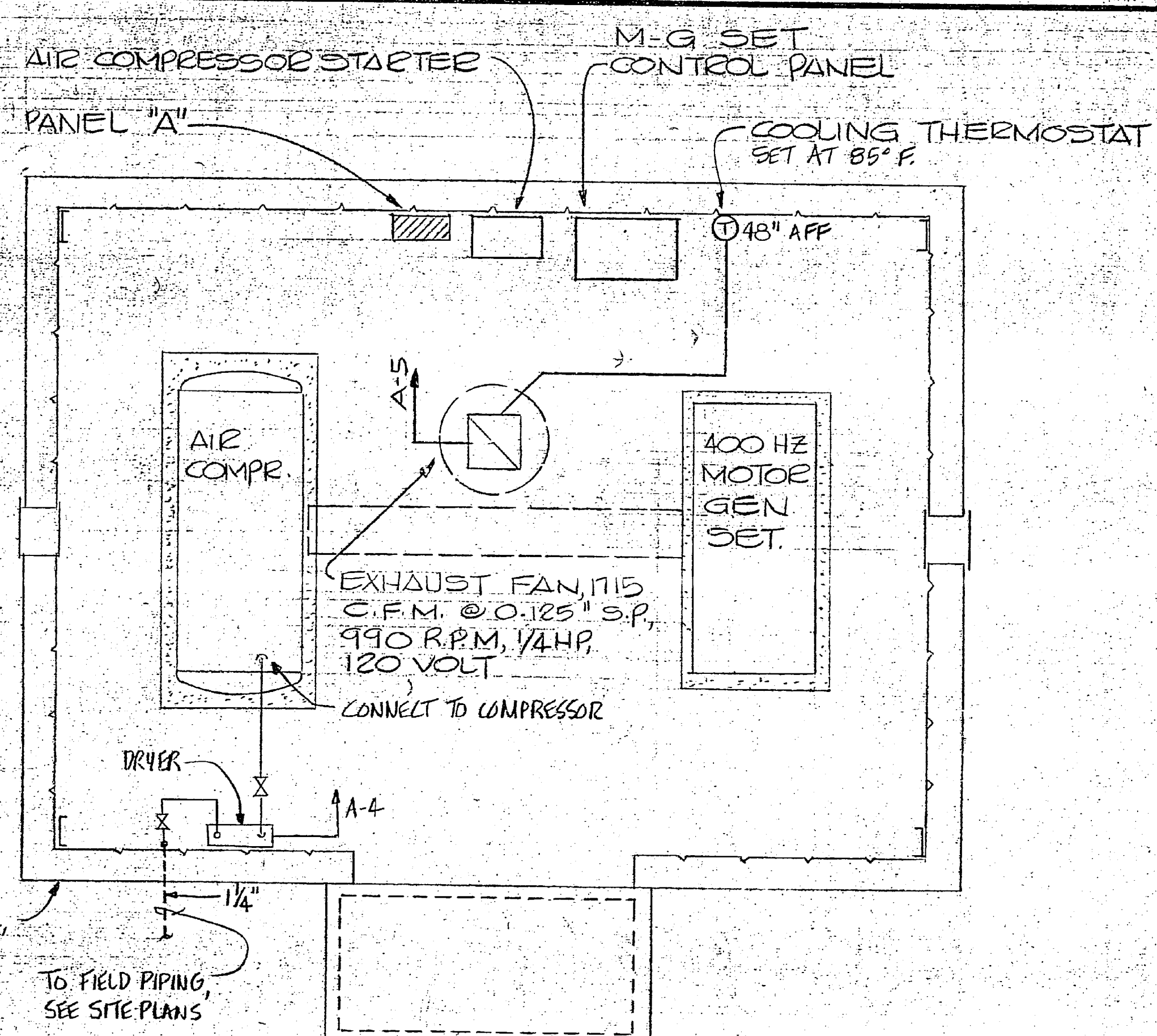
NOTE: WIRING TROUGH TAPS TO LINE SIDE OF SWITCHES SHALL BE THE SAME SIZE AS THE LOAD SIDE FEEDER AND SHALL EACH BE CONNECTED TO BOTH PARALLEL SERVICE CONDUCTORS. PROVIDE FUSES PER SWITCH AMPACITY UNLESS NOTED OTHERWISE.

RECORD DRAWING LETTER DATED JAN 10 1985			
HENRY VON OESSEN AND ASSOCIATES CONSULTING ENGINEERS AND PLANNERS WILMINGTON, NORTH CAROLINA		DEPARTMENT OF THE NAVY NAVAL FACILITIES ENGINEERING COMMAND ATLANTIC DIVISION JACKSONVILLE, NORTH CAROLINA	
DES. RDM OR CTJ PROJ. MGR. RDM OR ENGR. HVO		NAVAL STATION MCAS (H) NEW RIVER	
SUBMITTED BY: [Signature] DATE: 8/10/83		NORFOLK, VIRGINIA JACKSONVILLE, NORTH CAROLINA	
ITEM NUMBER: [Signature] EFD-PP-2200 H.R. [Signature] R.D. [Signature]		UTILITY SUPPORT FOR MOBILE MAINTENANCE VANS	
APPROVED: [Signature] DATE:		RISER DIAGRAMS	
ACTIVITY - SATISFACTORY TO		SIZE: F CODE IDENT. NO.: 80091	
APPROVED FOR EFD FOR COMMANDER NAVFAC		NAVFAC DRAWING NO.: 4091129 CONSTR. CONTROL NO.: NS2470-B2-B-2354	
SCALE: AS SHOWN		SPEC: OS-B2-2354 SHEET: 2 OF 8	





LIGHTING, RECEPTACLE PLAN



POWER PLAN

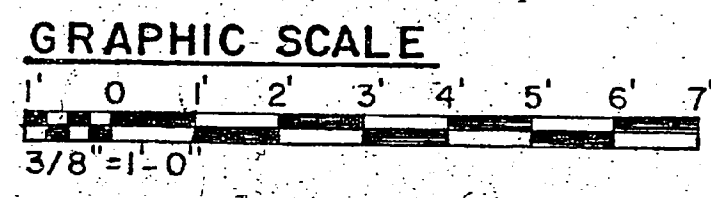
PREFAB METAL BUILDING ELECTRICAL PLANS

SCALE: 3/8" = 1'-0"

REVISIONS			
SYM	DESCRIPTION	DATE	APPROVED

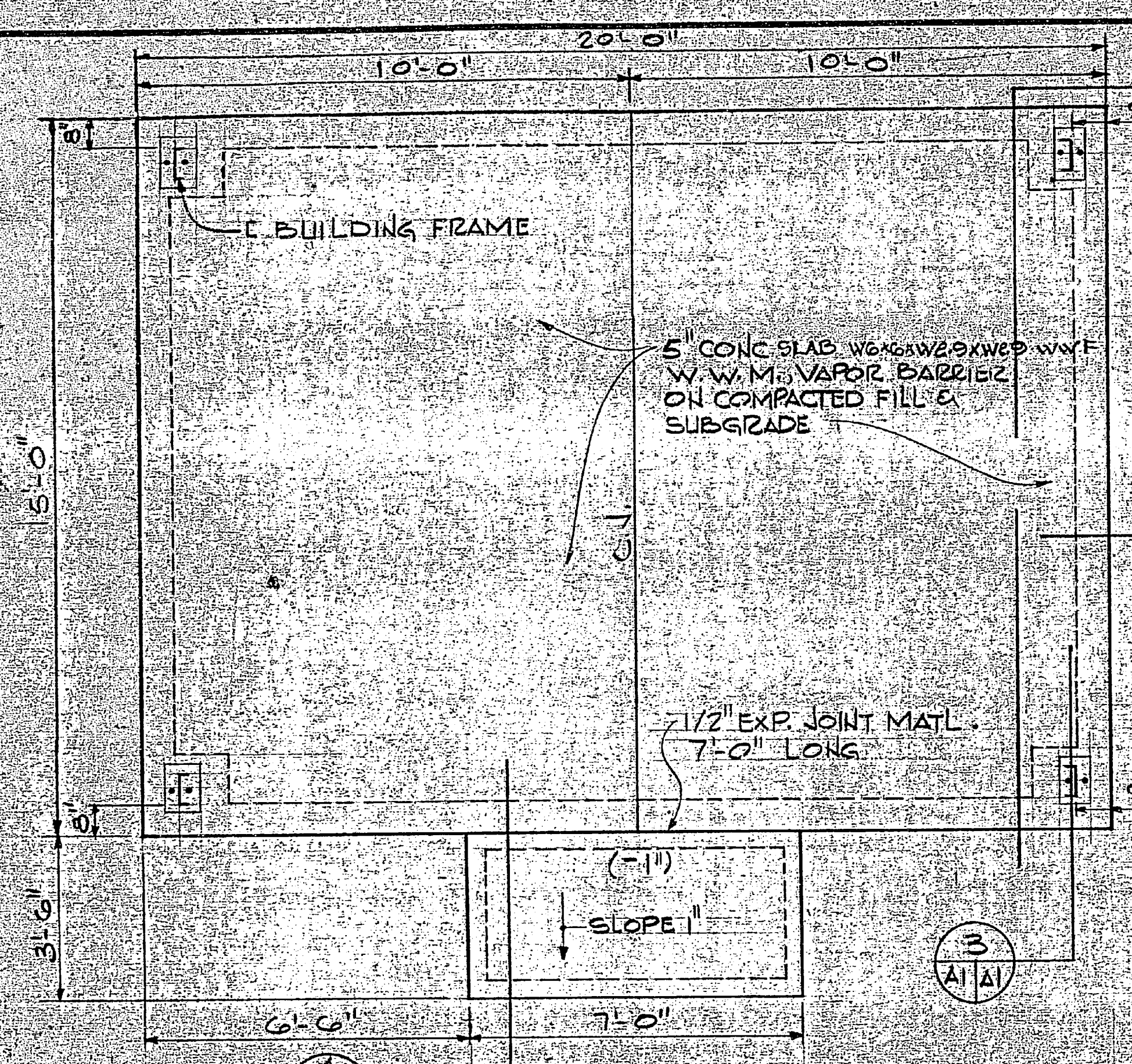
PANEL A															
3 PHASE, S. WIRE, 20/208 VOLTS, 60 AMPERE BUS, 60 AMPERE MCB, 100% NEUTRAL, SURFACE MOUNTING, NEMA-1 ENCLOSURE, EQUIPMENT GROUND BUS, INTEGRATED EQUIPMENT RATING OF 10,000 RMS SYMMETRICAL AMPERES MINIMUM USLE LABEL															
DESIGNATION TO BE TYPED IN PANEL CIRCUIT DIRECTORY	PHASE LOADING			CKT. NO.	CKT. CLASS	TRIP	A	B	CKT. NO.	CKT. CLASS	TRIP	PHASE LOADING	DESIGNATION TO BE TYPED IN PANEL CIRCUIT DIRECTORY		
	A	B	C									A	B	C	
LIGHTING	100			1					2						
RECEPTACLES			180	3					4				100	CONTROL POWER	
EXHAUST FAN	607			5					6					SPACE	
SPACE ONLY				7					8					SPACE ONLY	
SPACE ONLY				9					10					SPACE ONLY	
NAMEPLATE ENGRAVING:				SUB-TOTAL "A"				SUB-TOTAL "B"				SUB-TOTAL "A"			
PANEL "A"															
10, 3-WIRE															
120/208 VOLTS															
GRAND TOTAL				867				280				VOLT-AMPERES			
LINE CURRENT				7				2				AMPERES			

LIGHTING FIXTURE SCHEDULE					
FIXTURE SYMBOL	STYLE & TYPE - SEE SPECS FOR NAVFAC SKETCH NO. OR SEE DETAIL ON PLANS	NUMBER AND TYPE OF LAMPS	VOLTS	MOUNTING	REMARKS
△	NL-2, TYPE A	2-F40T12CW/RS	120	SURFACE	ENERGY-SAVING BALLAST

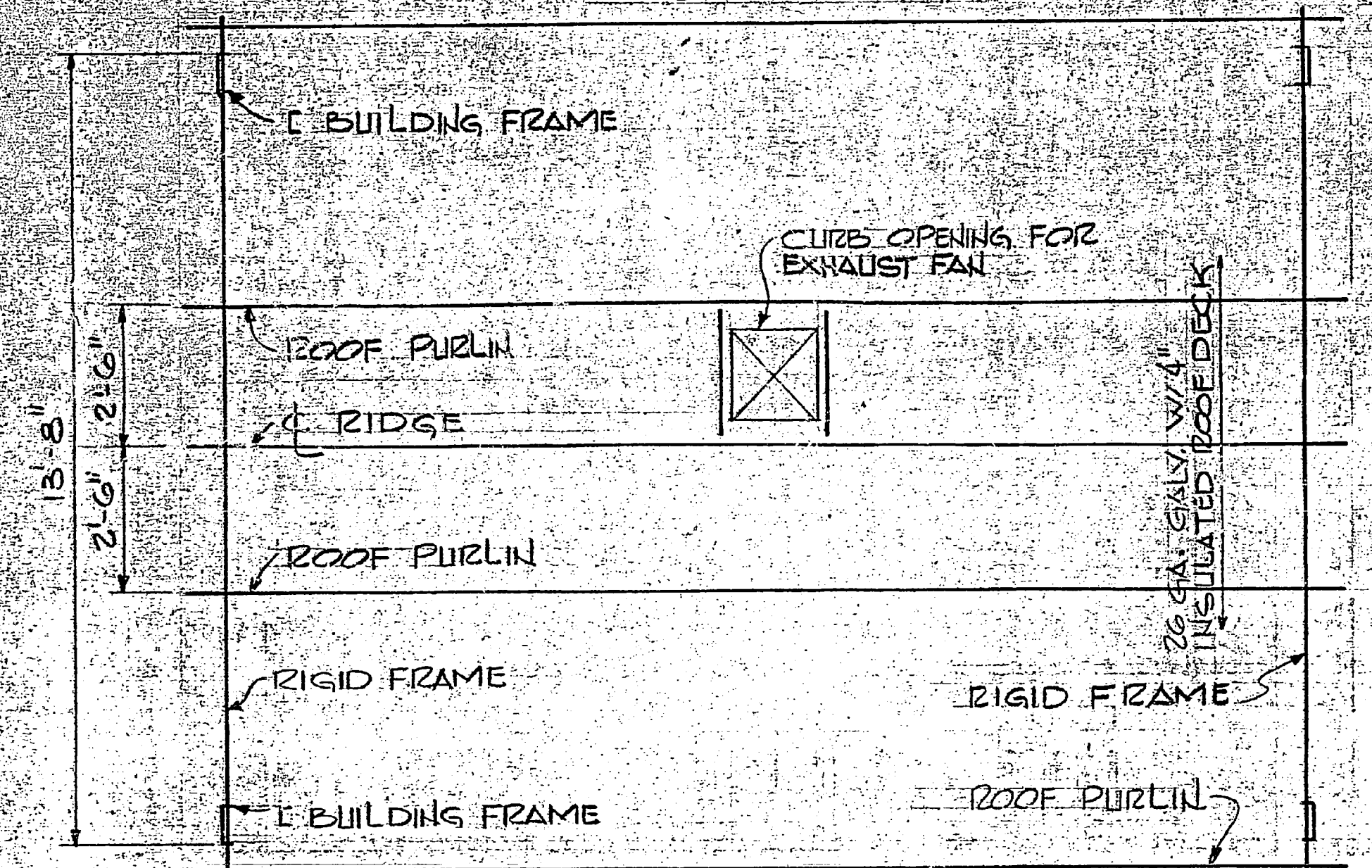


RECORD DRAWING LETTER DATED JAN 10 1985			
HENRY VON DESEN, AND ASSOCIATES CONSULTING ENGINEERS AND PLANNERS WILMINGTON, NORTH CAROLINA		DEPARTMENT OF THE NAVY NAVAL FACILITIES ENGINEERING COMMAND ATLANTIC DIVISION JACKSONVILLE, NORTH CAROLINA	
PROJ. MGR. RDM CH. ENGR. HVO SUBMITTED BY: <i>[Signature]</i> DATE: 8/10/83 FIRM MEMBER: PRINCIPAL EFD/FF: TYPED RVD/MSH HD: <i>[Signature]</i> CK: DIR: <i>[Signature]</i> V: <i>[Signature]</i> PE:		NAVSTATION: MCAS (H) NEW RIVER UTILITY SUPPORT FOR MOBILE MAINTENANCE VANS ELECTRICAL DETAILS	
APPROVED: <i>[Signature]</i> DATE: 8/10/83 ACTIVITY - SATISFACTORY TO:		SIZE: CODE IDENT NO: F 80091 NAVAL DRAWING NO: 4091130 CONSTR. CONTR. NO: N 62470-82-B-2354	
FOR EFD FOR COMMANDER/NAVFAC		SCALE: AS SHOWN SPEC: 05-82-2354 SHEET 5 OF 6 EFD DWS NO: 191130	

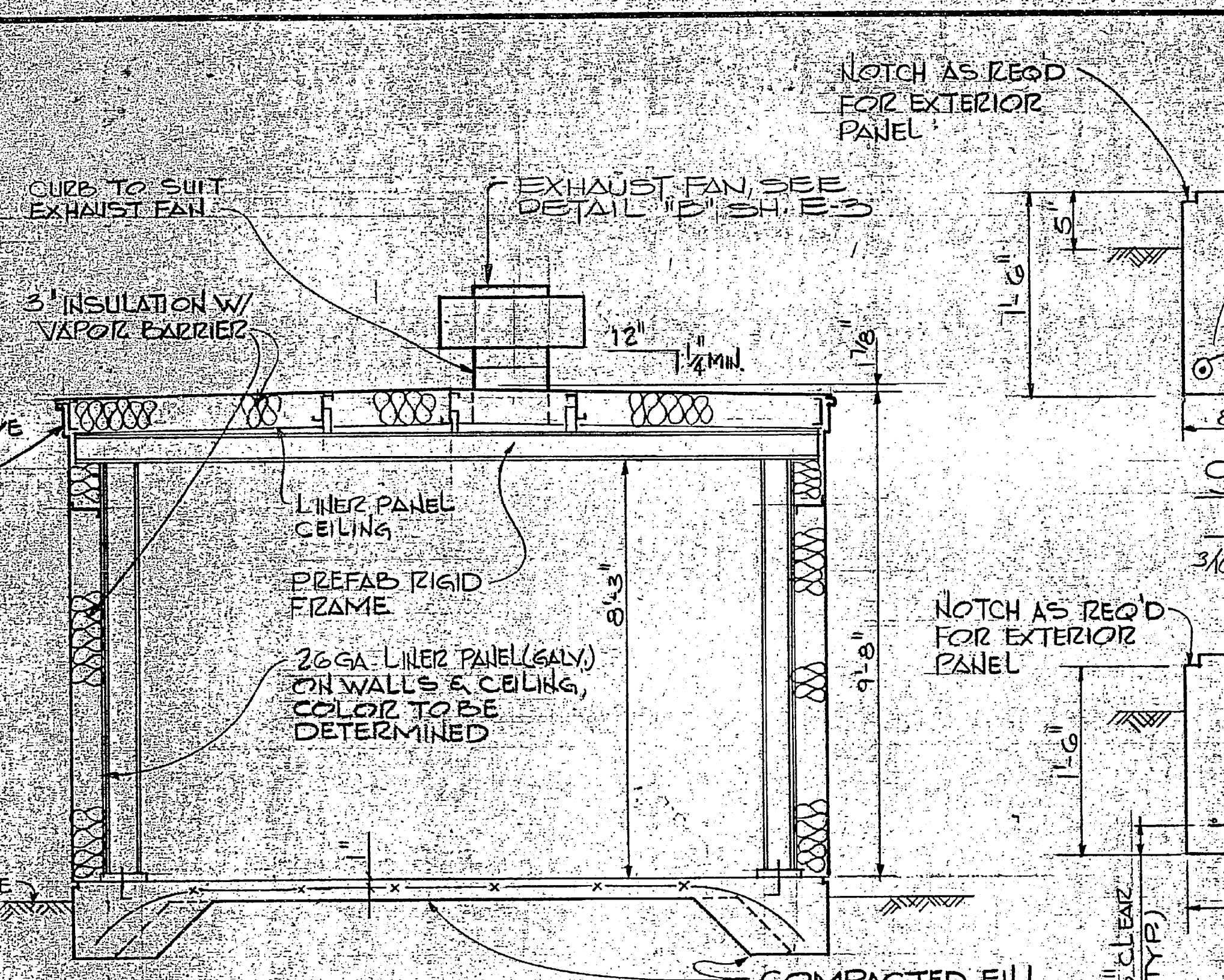
DOOR SCHEDULE				REVISIONS	
MARK	DOOR & FRAME	HARDWARE	SPECIAL	DATE	APPROVED
A	6'-0" x 7'-0" x 1 1/2" HOLLOW METAL DOOR & MATCHING FRAME, FACTORY ASSEMBLED	1 1/2" PAIR HINGES HEAD, FOOT, BOLT, ASTRALGAL DOOR HOLDERS, LOCKSET	28x24 GALV STEEL LOUVERS W/ SCREEN & BACK DRAFT DAMPERS		



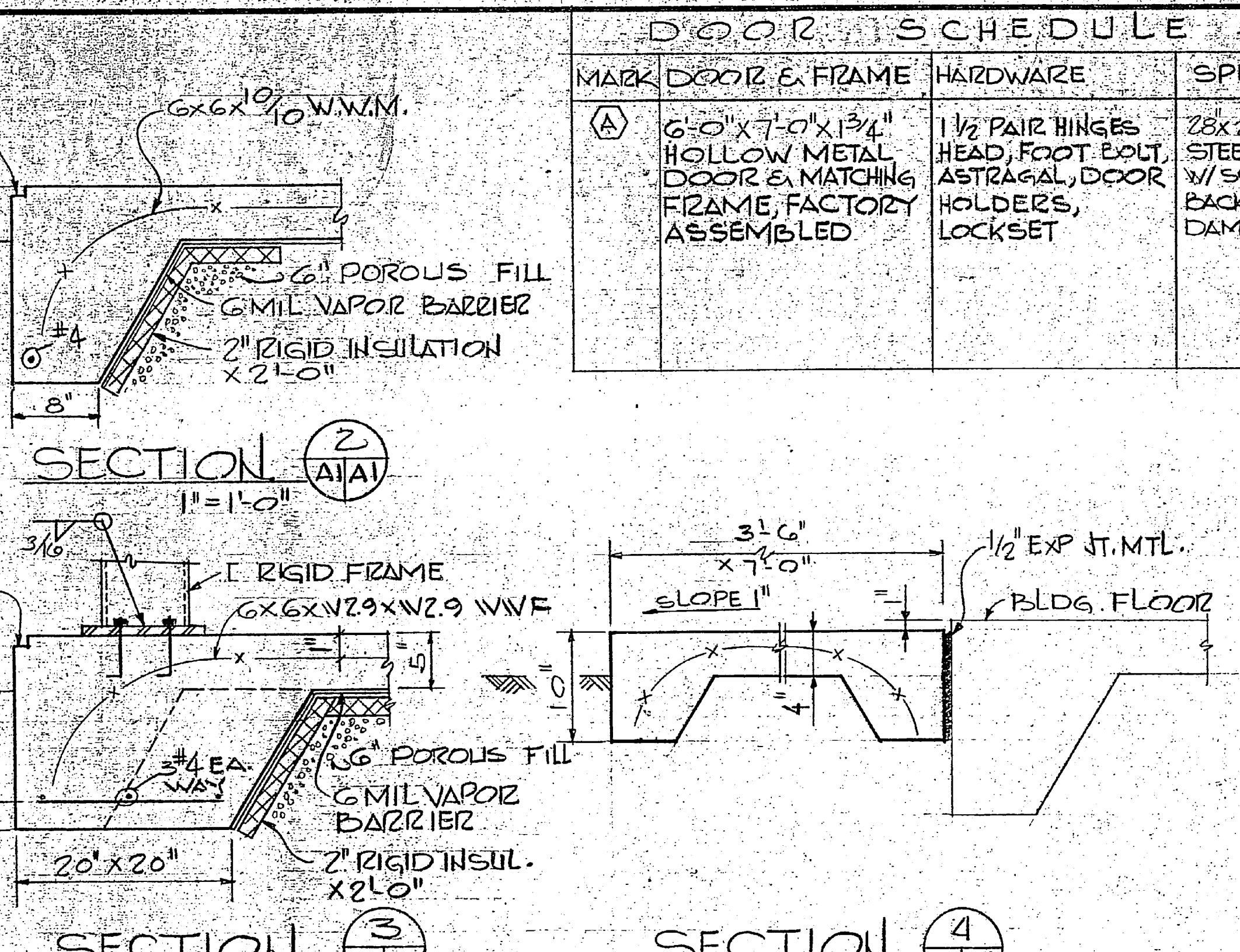
FOUNDATION PLAN
3/8" = 1'-0"



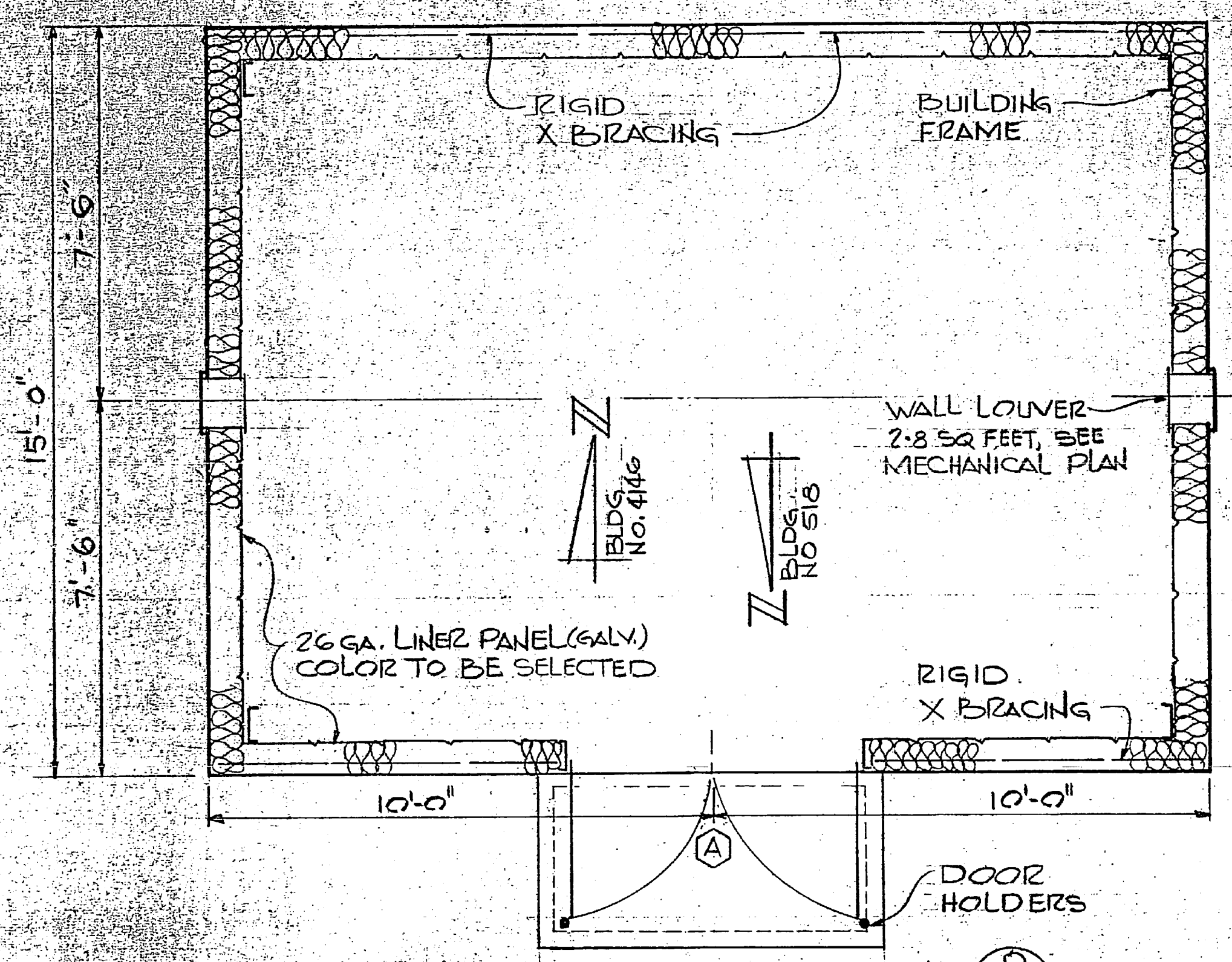
ROOF FRAMING PLAN
3/8" = 1'-0"



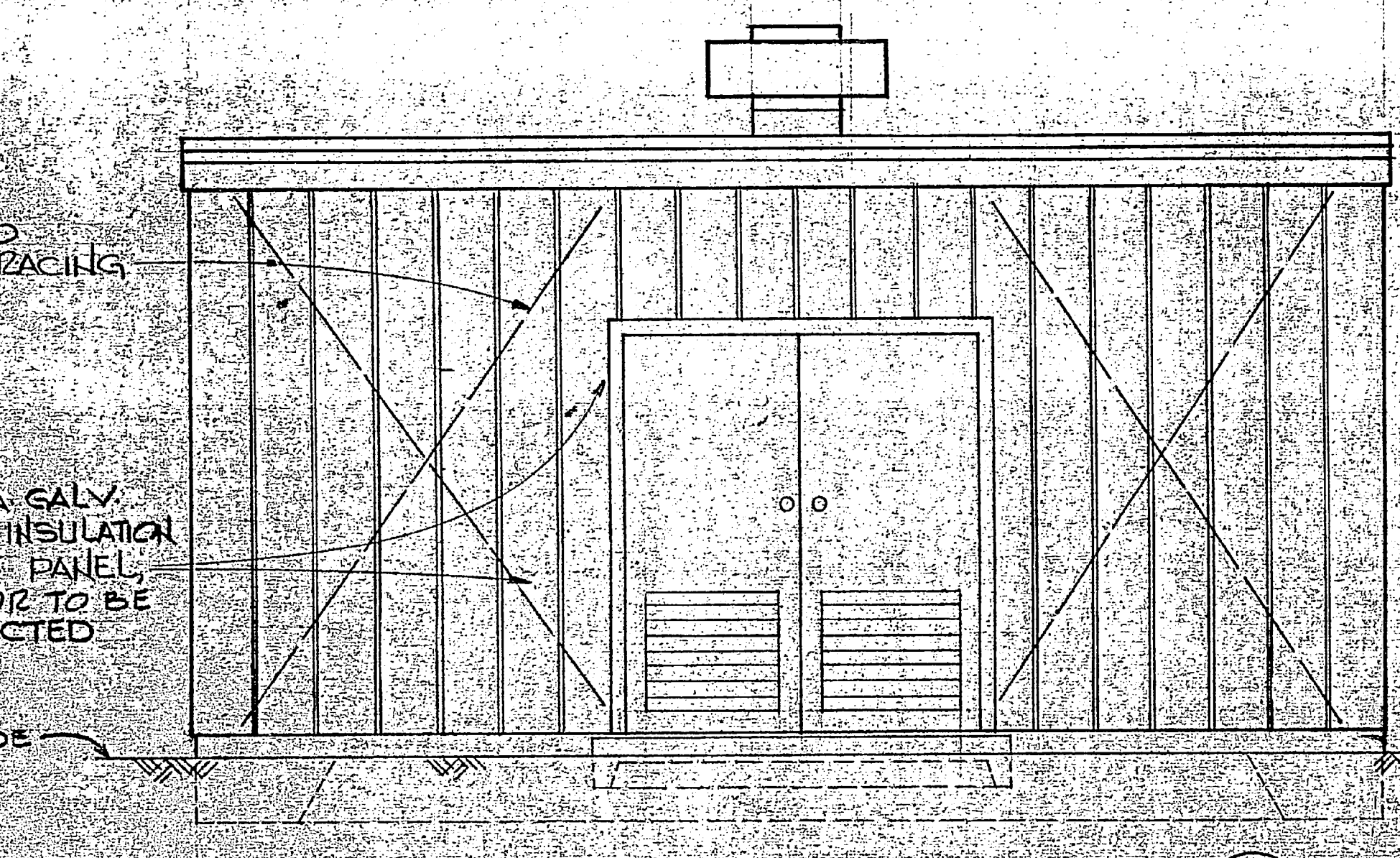
SECTION 1
3/8" = 1'-0"



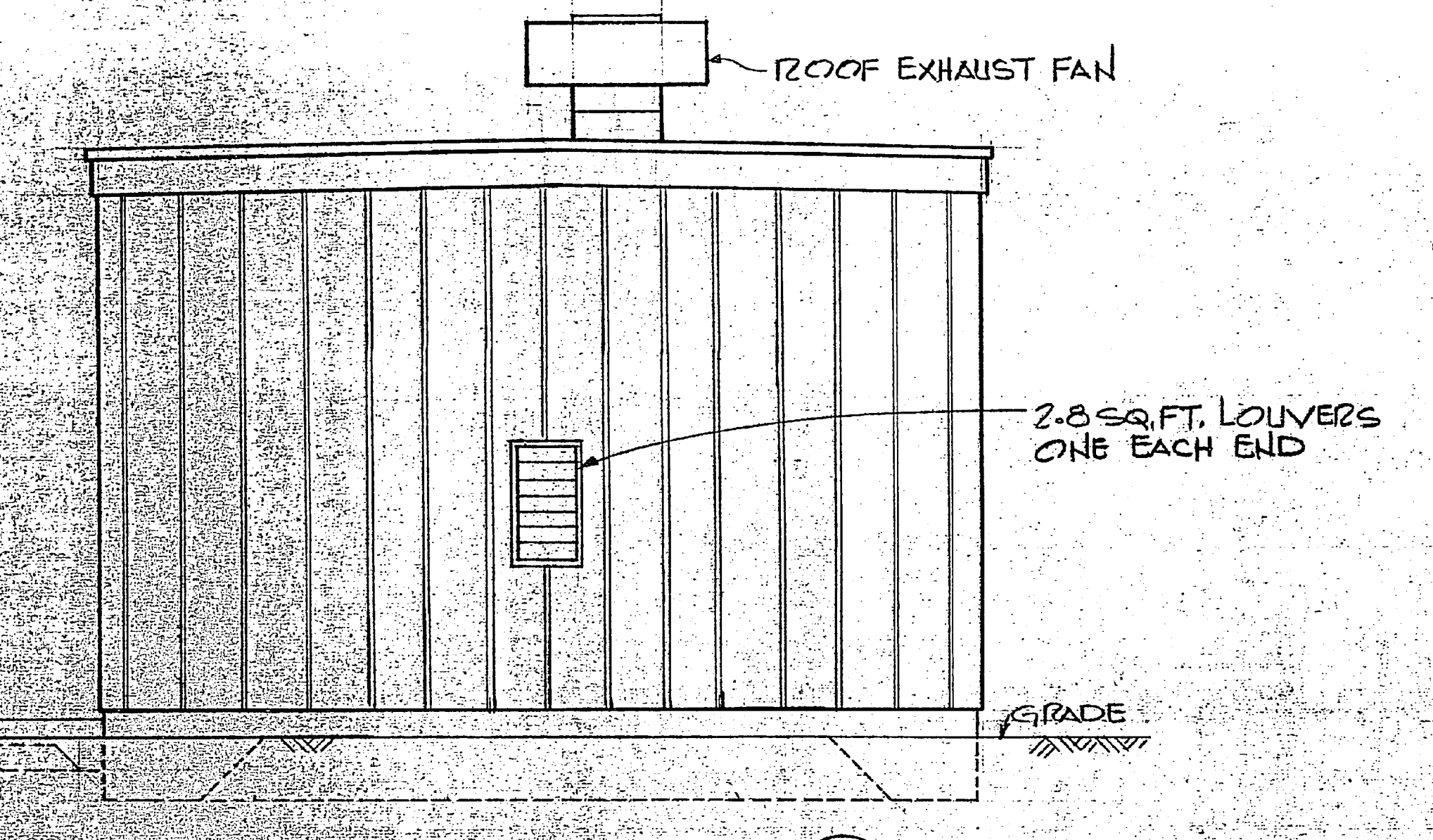
SECTION 2
1" = 1'-0"



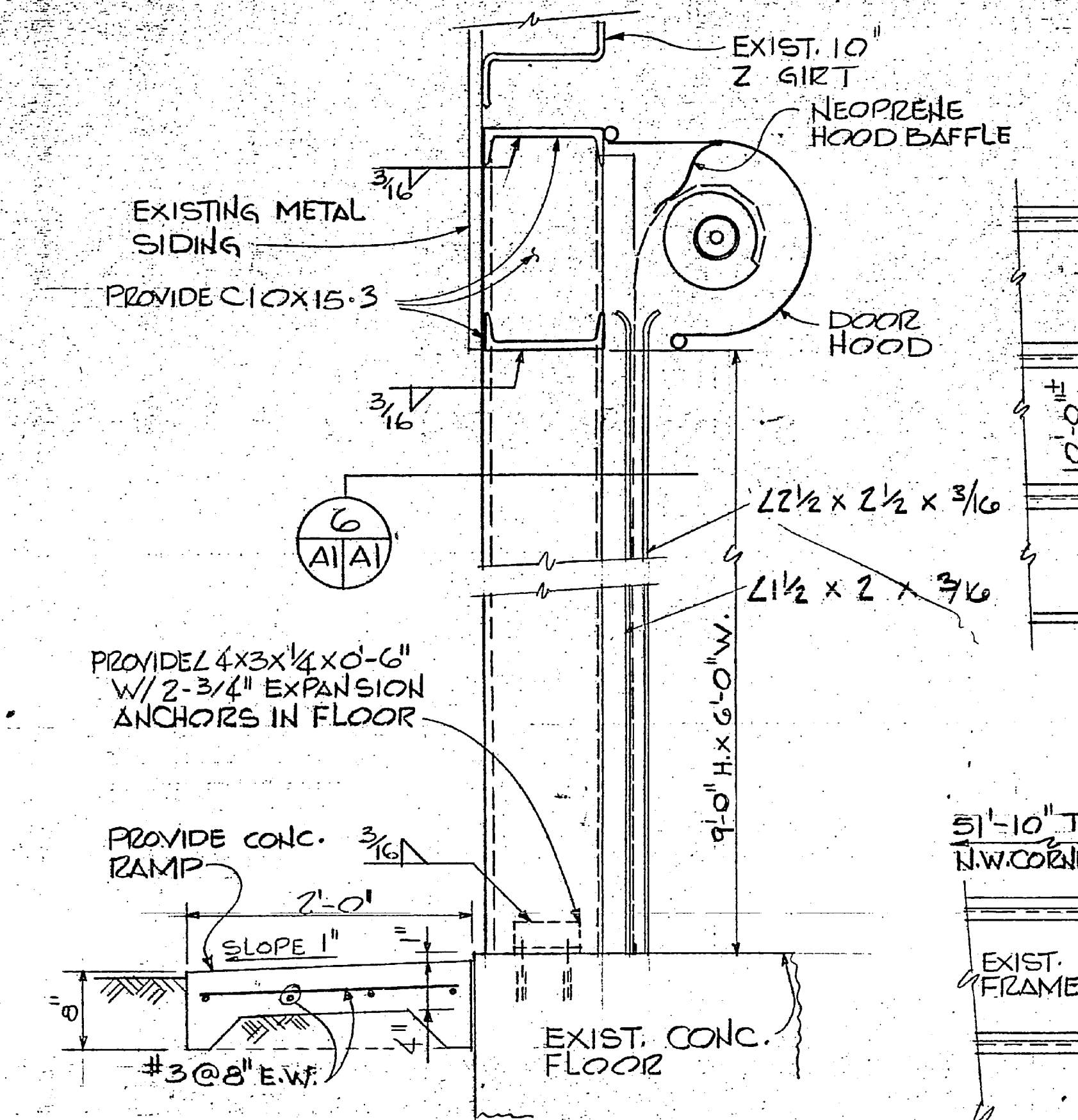
FLOOR PLAN
3/8" = 1'-0"



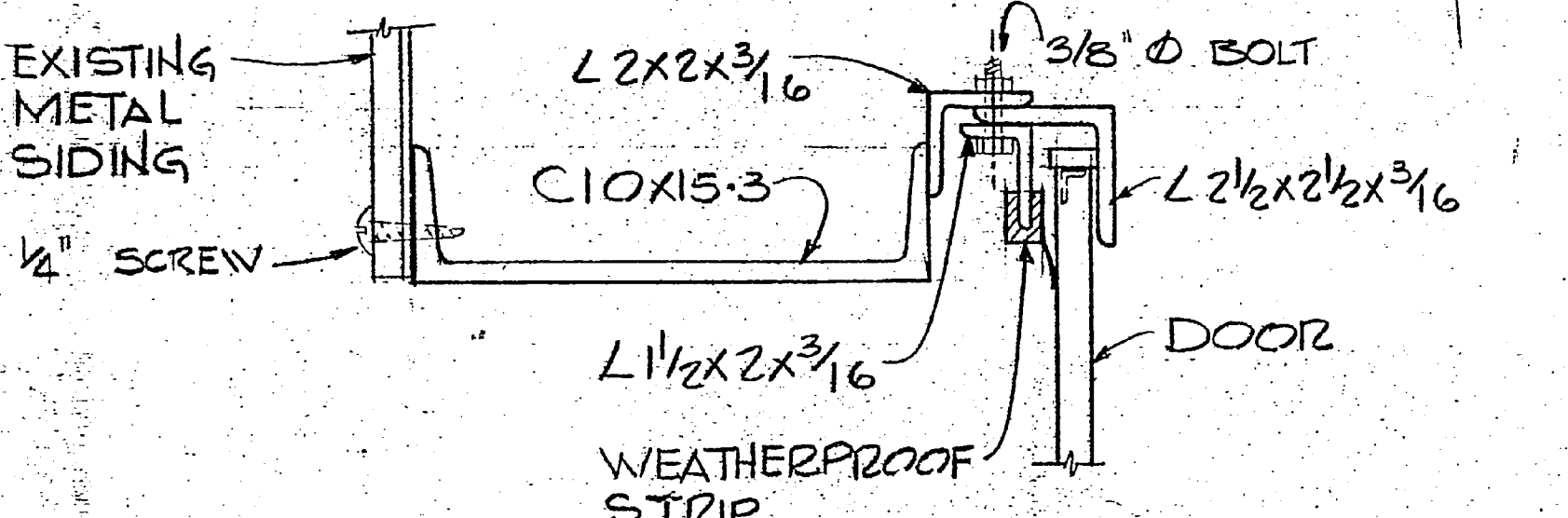
FRONT ELEVATION
3/8" = 1'-0"



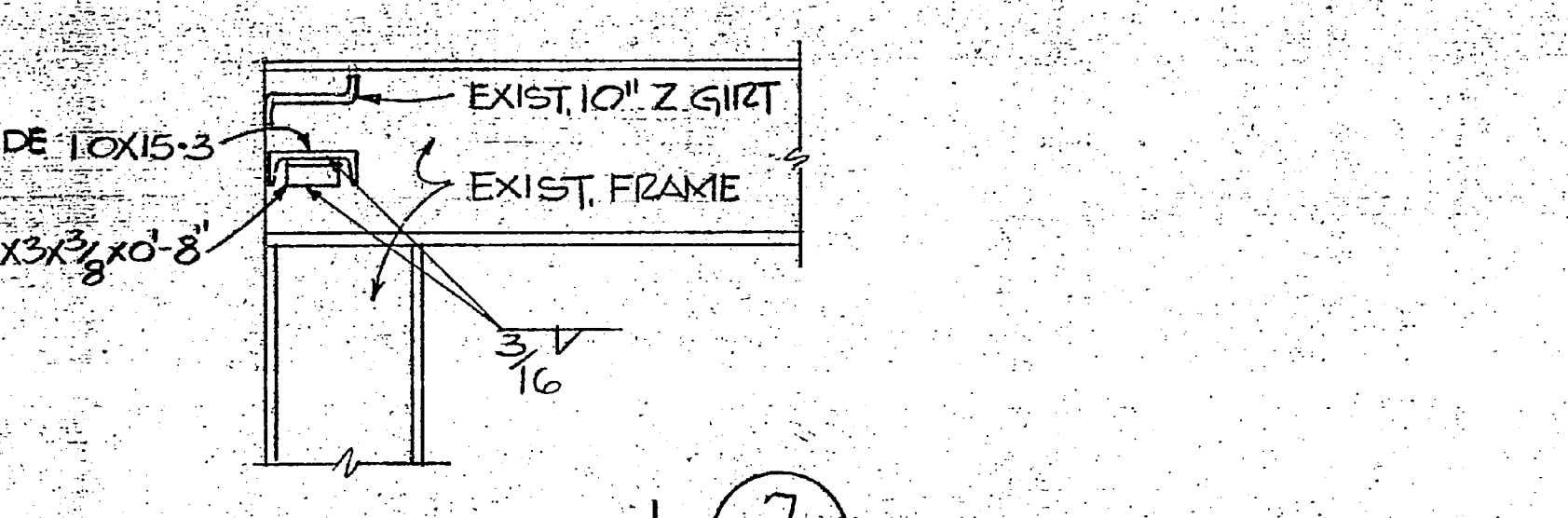
SIDE ELEVATION
3/8" = 1'-0"



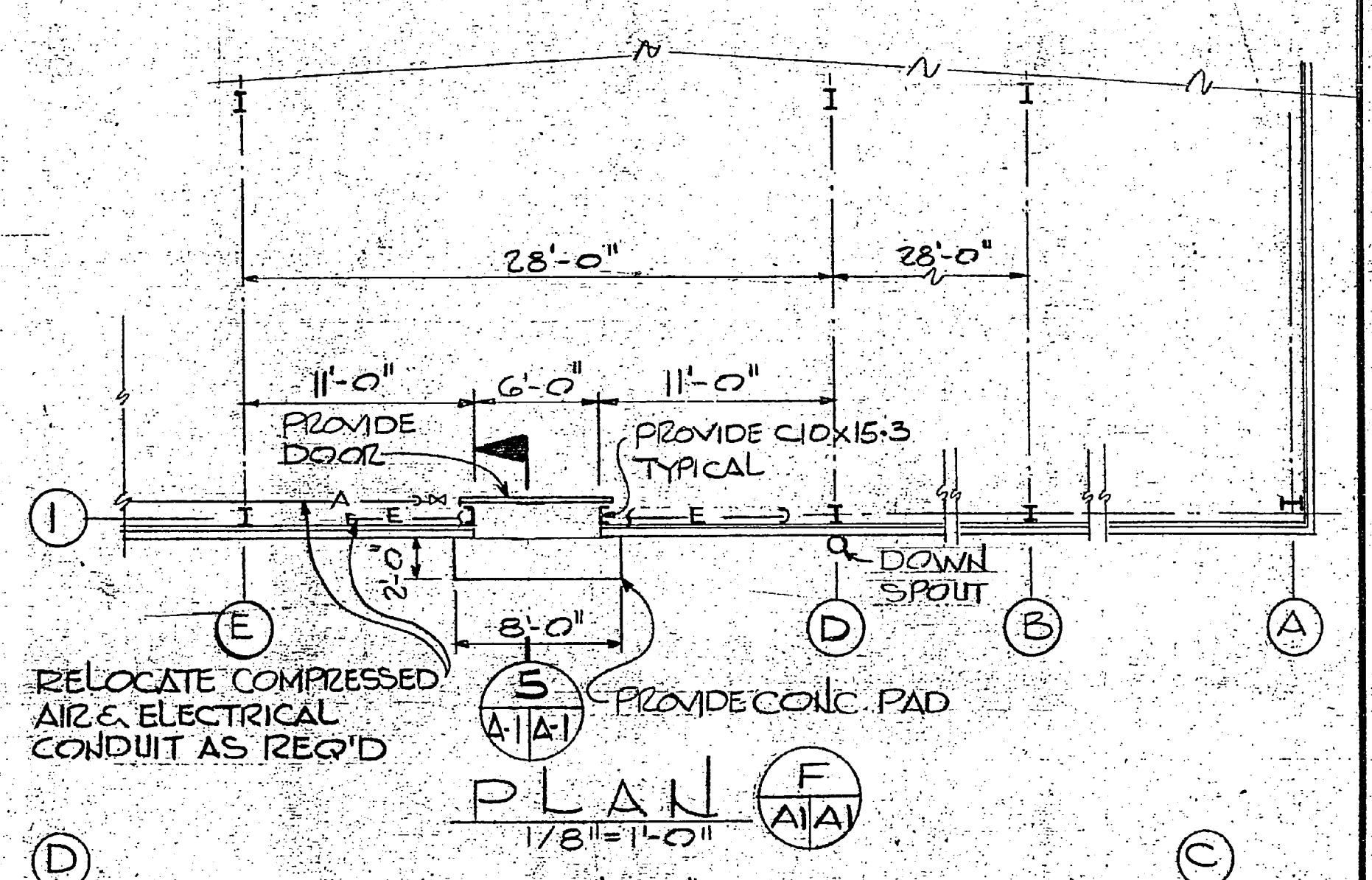
SECTION 5
1" = 1'-0"



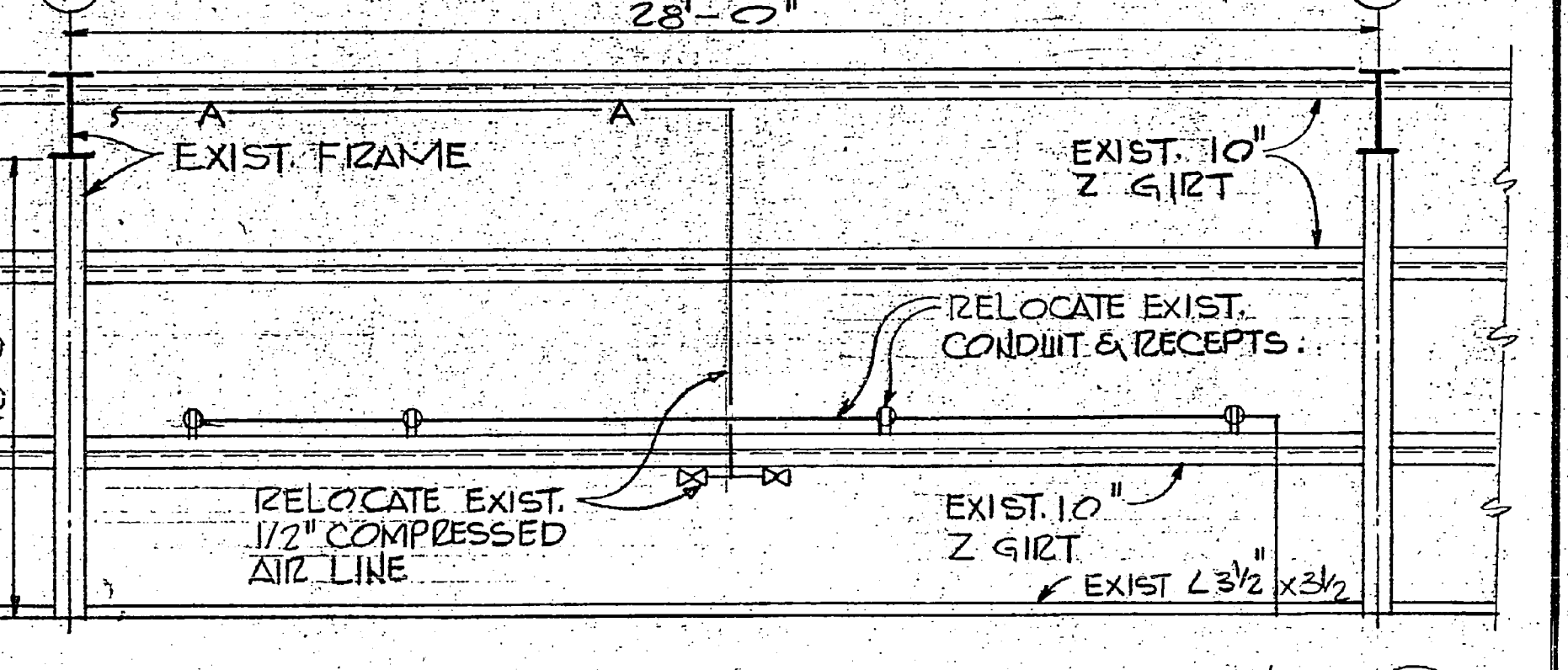
SECTION 6
NO SCALE



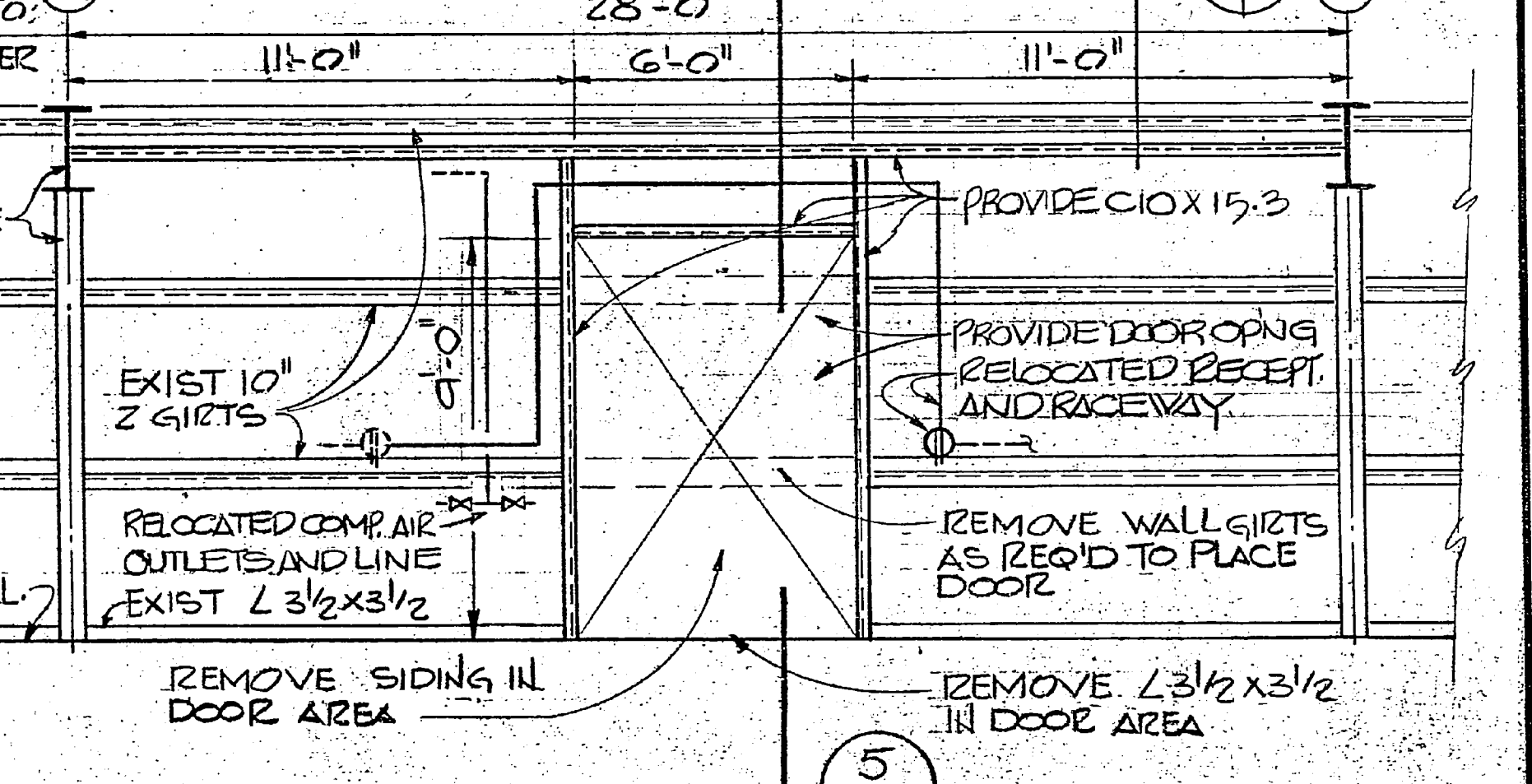
SECTION 7
NO SCALE



PLAN F
1/8" = 1'-0"



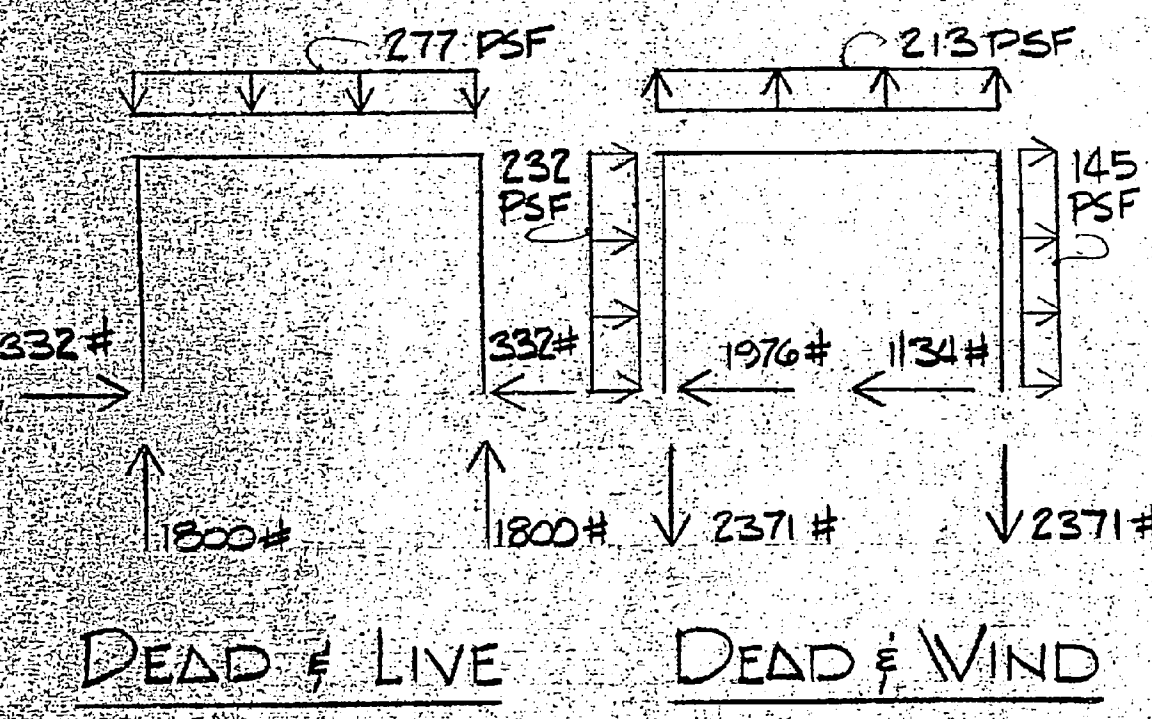
ELEVATION OF EXISTING WALL FRAMING
1/4" = 1'-0"



ELEVATION OF NEW WALL FRAMING
1/4" = 1'-0"

DESIGN NOTES

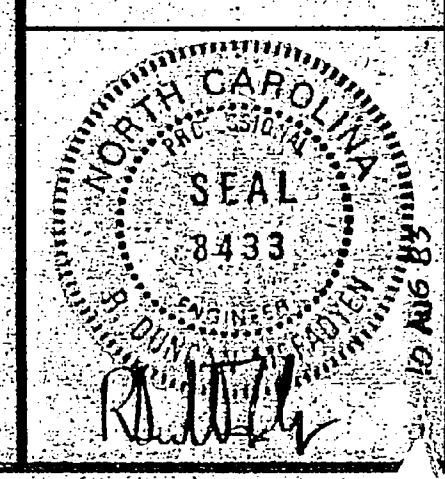
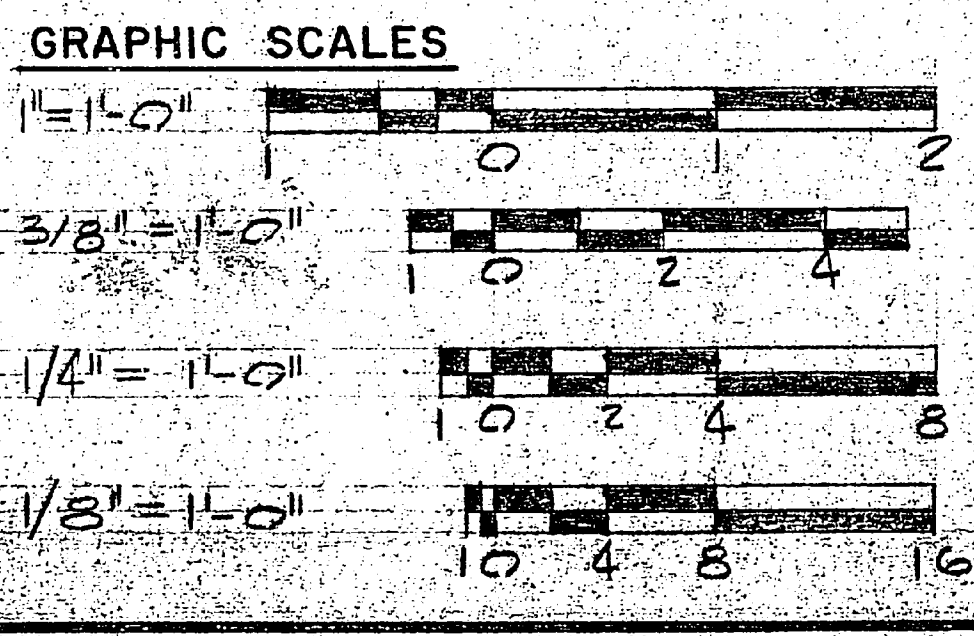
- GENERAL
- DESIGN LIVE LOADS = ROOF - 20 PSF, BASIC WIND DESIGN VELOCITY 115 MPH, SEISMIC ZONE - 1.
- ALL DESIGN TO COMPLY WITH NAVFAC DM-2 LATEST EDITION.
- FOUNDATION
- FOOTING DESIGN BASED ON ALLOWABLE SOIL PRESSURE OF 1,000 PSF.
- CONCRETE
- CONCRETE COMPRESSIVE STRENGTH AT 28 DAYS - 3,000 PSI.
- REINFORCING STEEL GRADE 40 WELDED WIRE MESH ASTM 185.
- PROVIDE AIR ENTRAINING OF 4 TO 6 PERCENT.



DEAD & LIVE DEAD & WIND

NOTE: THE BUILDING FOUNDATION HAS BEEN DESIGNED FOR THE LOADS & REACTIONS IF BUILDING FURNISHED HAS REACTIONS THAT EXCEED THOSE SHOWN, THE CONTRACTOR SHALL BE RESPONSIBLE FOR REDESIGN OF THE FOUNDATION. THE REDESIGN SHALL BE SUBMITTED TO THE ROICC FOR APPROVAL. APPROVAL MUST BE RECEIVED PRIOR TO DELIVERY OF METAL.

DESIGN LOADS
ROOF LIVE LOADS 20 PSF
WIND 115 MPH
ALLOW SOIL BEARING PRESSURE 1,000 PSF



RECORD DRAWING LETTER DATED JAN 10, 1985		A-1	
HENRY VON OSEN AND ASSOCIATES CONSULTING ENGINEERS AND PLANNERS WILMINGTON, NORTH CAROLINA		ATLANTIC DIVISION	
DES. JRA DR. JAN CHK. JRA PROJ. MGR. DER CH. ENGR. HVO		NAVAL STATION MCAS (H) NEW RIVER JACKSONVILLE, NORTH CAROLINA	
SUBMITTED BY: [Signature] NO. [Number] PROJ. [Number] DATE [Date]		UTILITY SUPPORT FOR MOBILE MAINTENANCE VANS	
FIELD NUMBER: [Number] PRINCIPAL: [Signature] ED. OFF. [Signature] R.V.B. C.H. NO. [Number] PROJ. [Number] DATE [Date]		PREFAB METAL BUILDING DETAILS	
ACTIVITY - SATISFACTORY TO: [Signature] APPROVED: [Signature] DATE [Date]		SIZE: [Number] X [Number] NAVFAC DRAWING NO. 4091131	
FOR ETD FOR [Signature] NAVFAC		SCALE: AS SHOWN SPEC. 05-82-2354 SHEET 6 OF 6	

