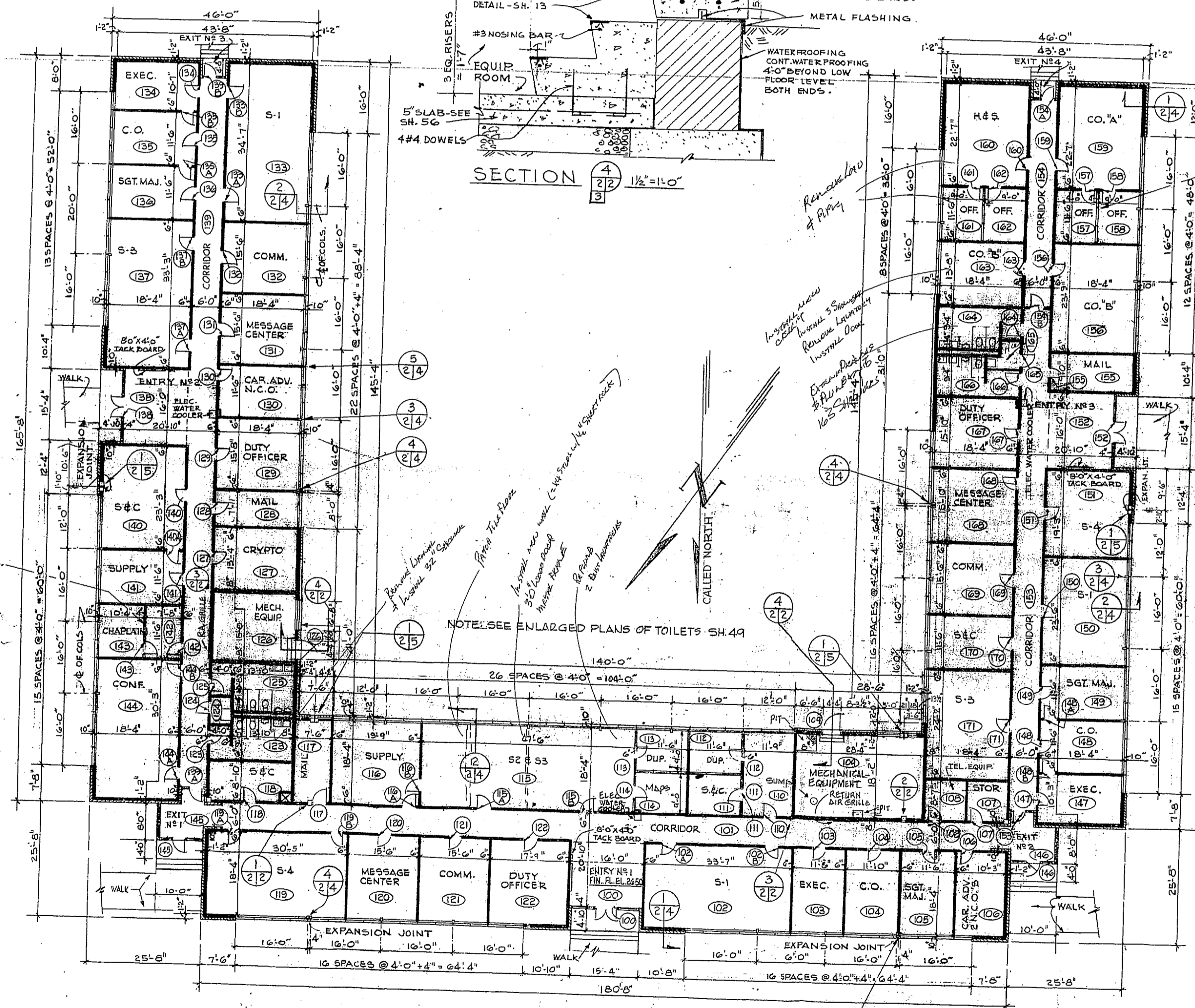
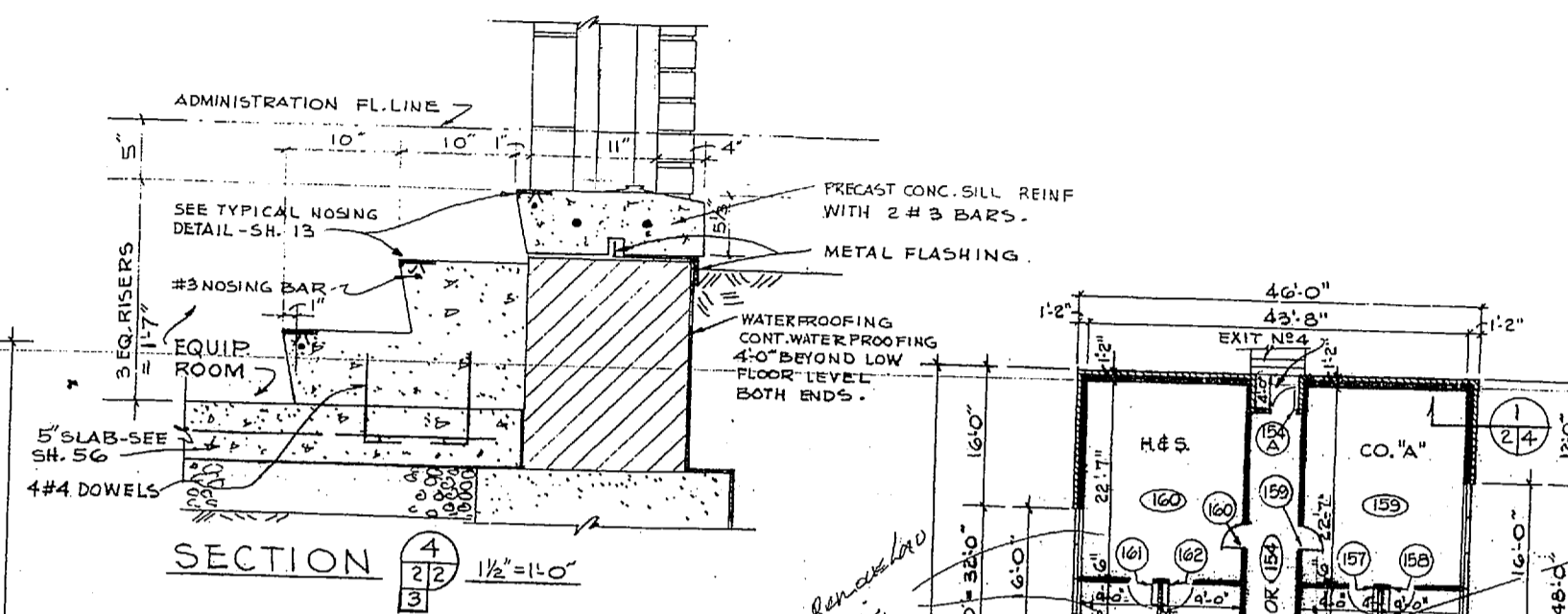
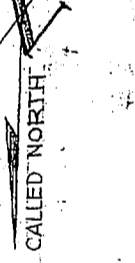


REVISIONS			
NO.	DESCRIPTION	DATE	APPROVED

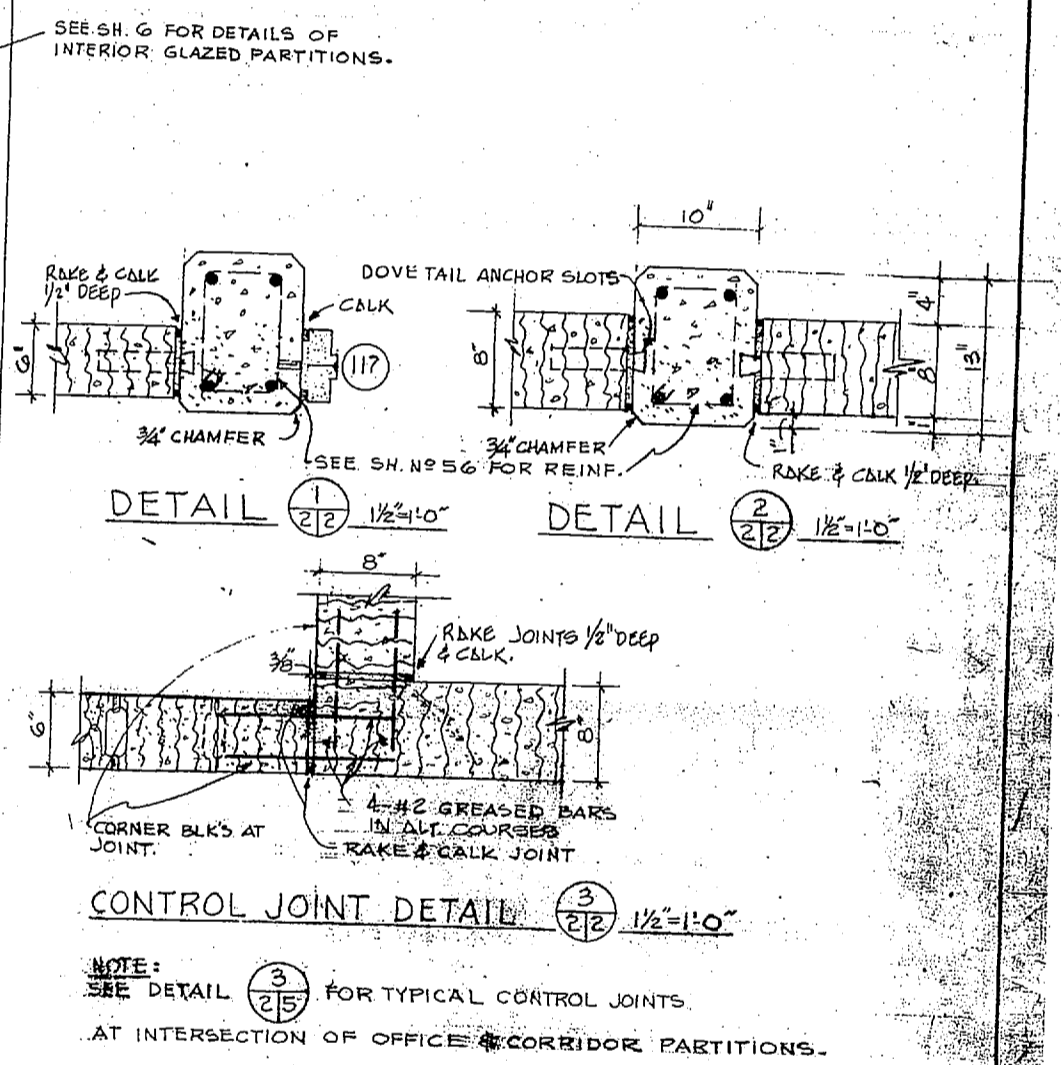


SECTION 4 1/2"=1'-0"

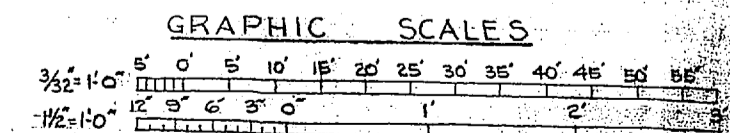
NOTE: SEE ENLARGED PLANS OF TOILETS SH. 49



FLOOR PLAN  
3/32" = 1'-0"



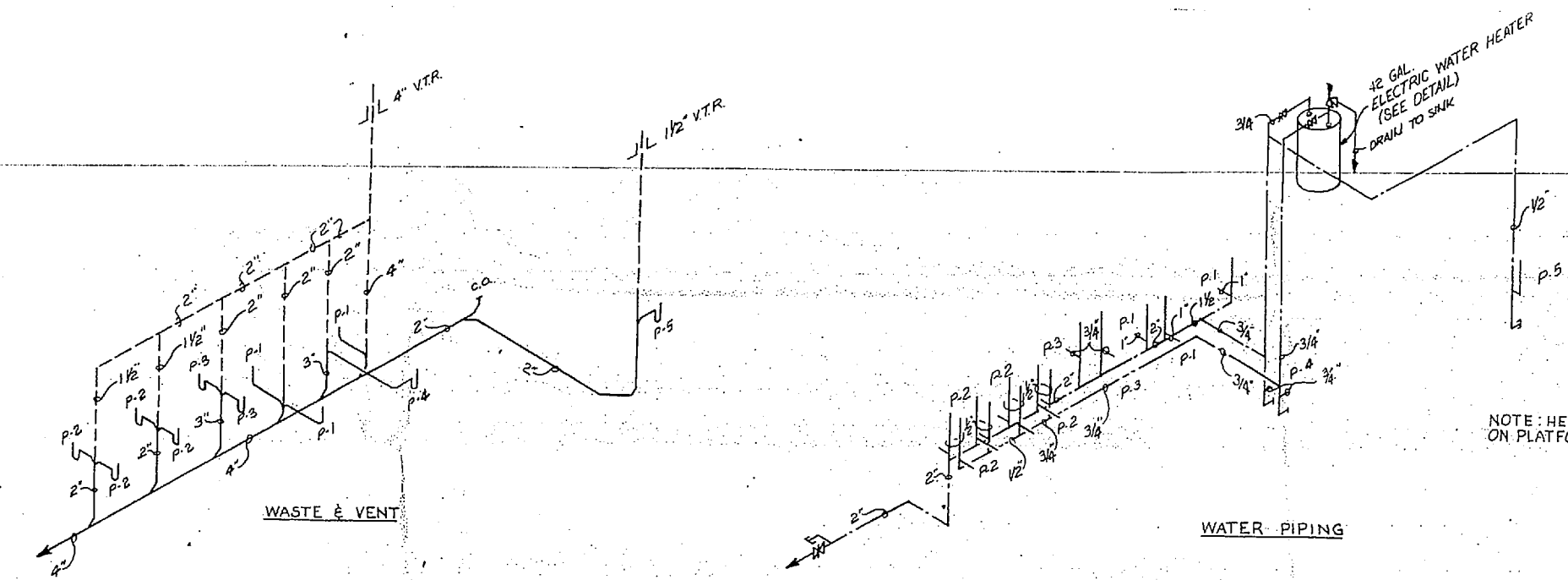
NOTE: SEE DETAIL 3 1/2"=1'-0" FOR TYPICAL CONTROL JOINTS AT INTERSECTION OF OFFICE & CORRIDOR PARTITIONS.



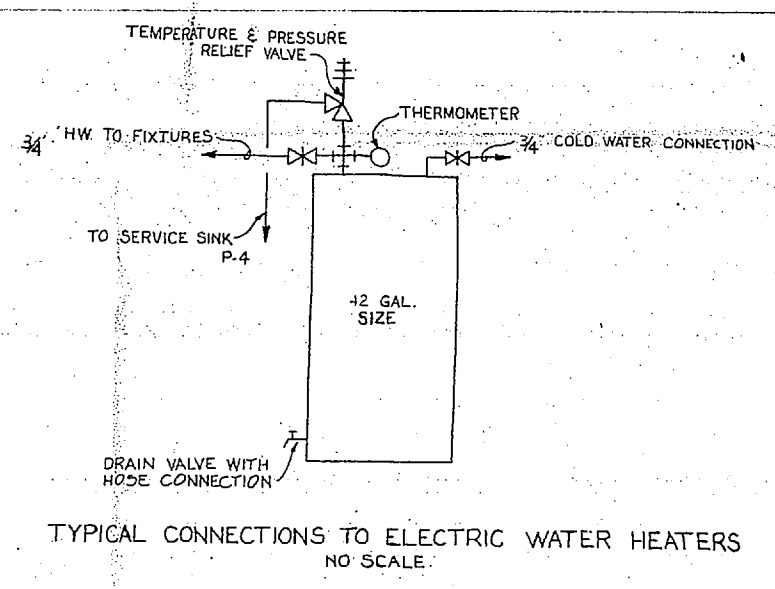
REF. NO. SH. 2	J. N. PEASE ASSOCIATES CHARLOTTE, NORTH CAROLINA ARCHITECTS-ENGINEERS	DEPARTMENT OF THE NAVY BUREAU OF YARDS & DOCKS ATLANTIC DIVISION NORFOLK 11, VIRGINIA
	DES. BY: J. N. PEASE PRD. BY: D. M. HACKETT, JR. S. M. HACKETT, JR. S. M. HACKETT, JR.	MARINE CORPS BASE CAMP LEJEUNE NORTH CAROLINA
FORCE TROOPS COMPANY ADMINISTRATION FLOOR PLAN & DETAILS		



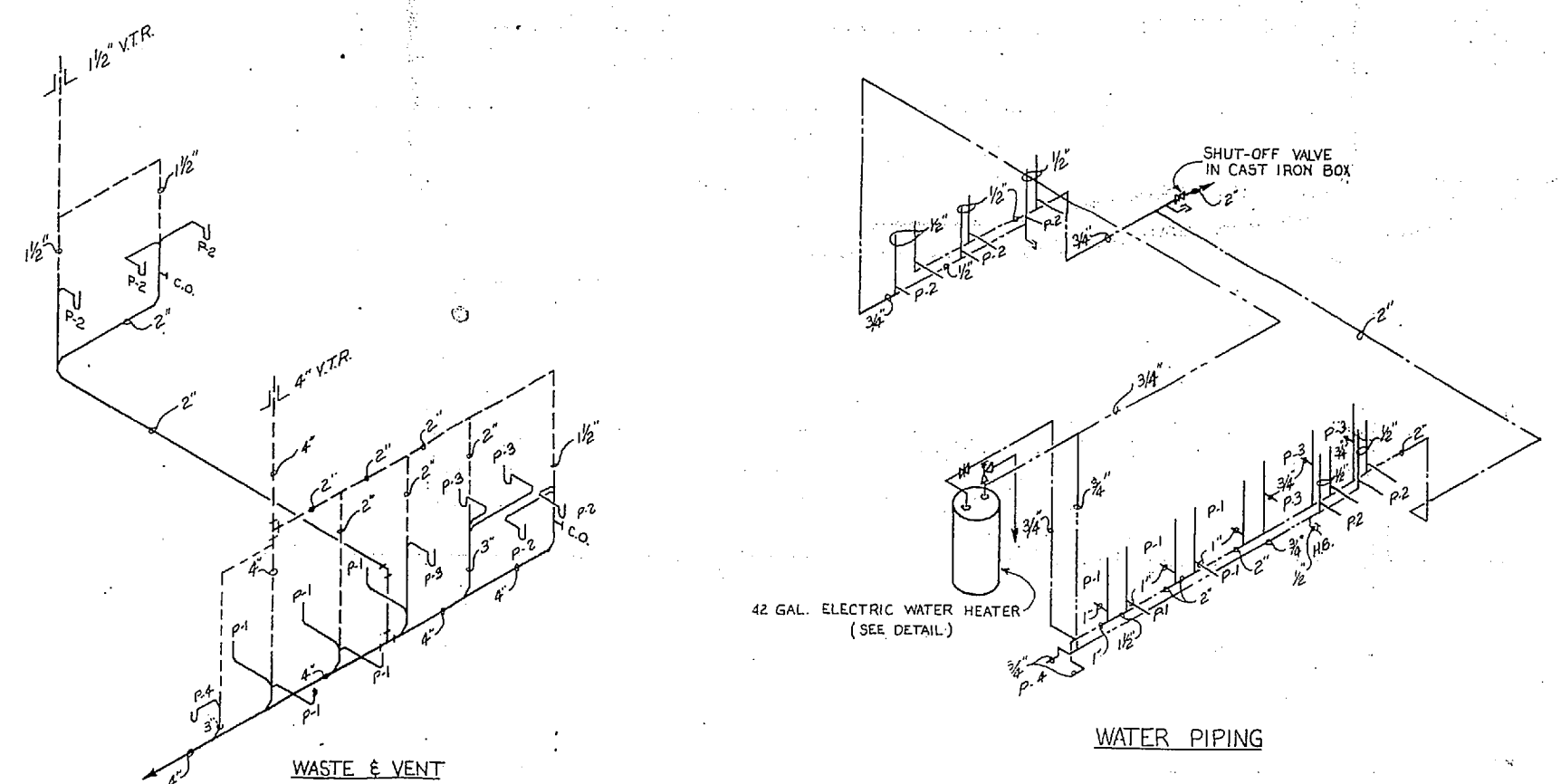
REVISIONS			
SYM.	DESCRIPTION	DATE	APP.



RISER No. 2  
NO SCALE



TYPICAL CONNECTIONS TO ELECTRIC WATER HEATERS  
NO SCALE



RISER No. 1  
NO SCALE

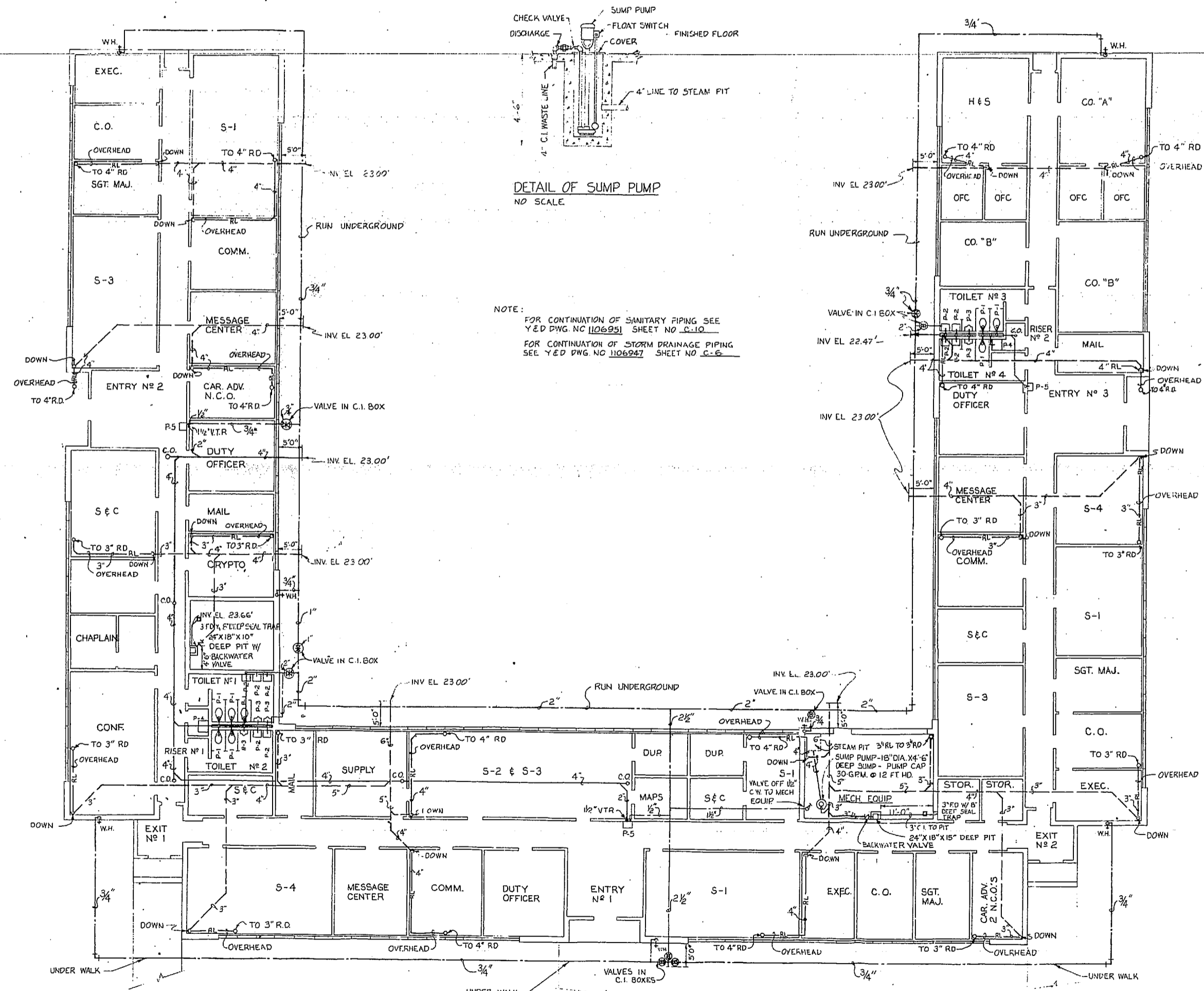
PLUMBING RISER DIAGRAMS  
NO SCALE

SCHEDULE OF PLUMBING FIXTURE CONNECTIONS

FIXTURE	DESCRIPTION	C.W.	H.W.	DRAIN	REMARKS
P-1	WATER CLOSET	1"	1/2"	4"	FLUSH VALVE
P-2	LAVATORY	1/2"	1/2"	1/2"	
P-3	URINAL	3/4"	2"	2"	
P-4	MOP SINK	3/4"	3/4"	3"	
P-5	ELECTRIC WATER COOLER	1/2"	1/2"	1/2"	

REF. No. SH. P-2	J. N. PEASE ASSOCIATES CHARLOTTE, NORTH CAROLINA ARCHITECTS-ENGINEERS	DEPARTMENT OF THE NAVY BUREAU OF YARDS & ATLANTIC DIVISION NORFOLK 11, VIRGINIA
DESIGNED BY J. N. PEASE	CHK'D BY J. N. PEASE	CAMP LEJEUNE MARINE CORPS BASE NORTH CAROL
SUBMITTED BY J. N. PEASE	DATE JUN 1958	FORCE TROOPS COMPLEX ADMINISTRATION PLUMBING RISER DIAGRAM
DR. MGR. J. N. PEASE	DATE JUN 1958	CODE IDENT. NO. 80091
SCALE AS NOTED	SPEC 69815/66 BY 69815	SHEET 1107070



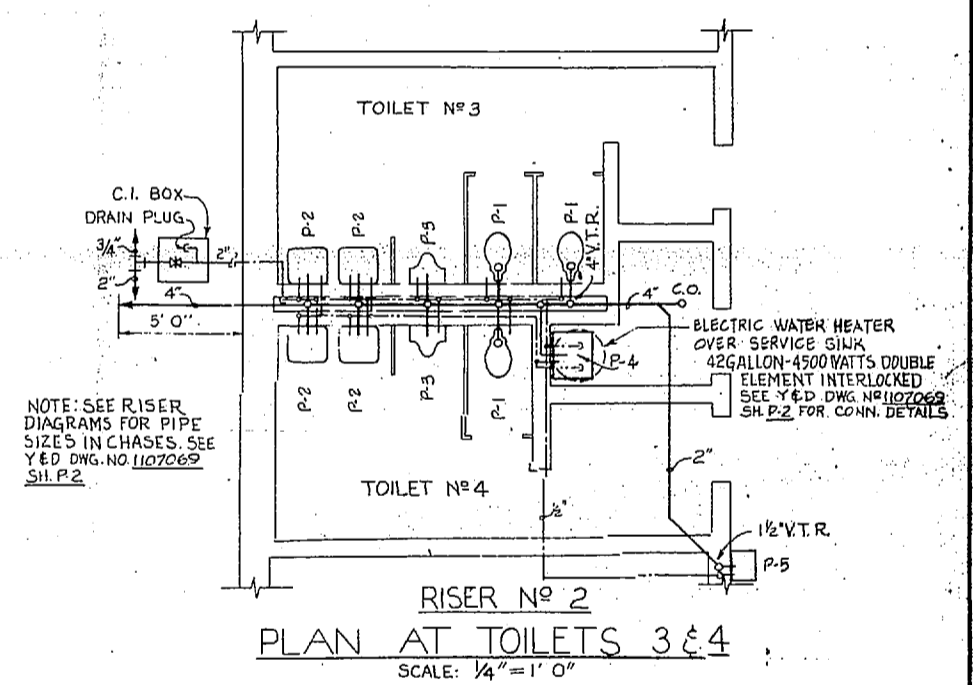
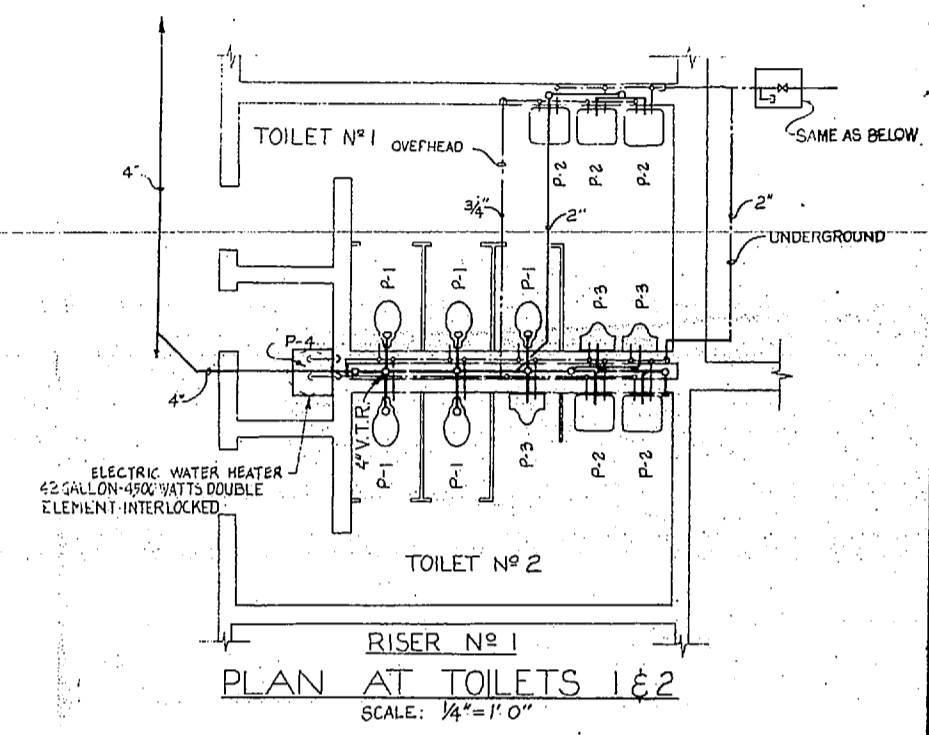


**FLOOR PLAN**  
SCALE: 3/32" = 1' 0"

NOTE: SEE Y & D DWG NO 1106947 SH C-6 FOR CONTINUATION OF STORM DRAINAGE  
SEE Y & D DWG NO 1106951 SH C-10 FOR CONTINUATION OF SANITARY SEWER

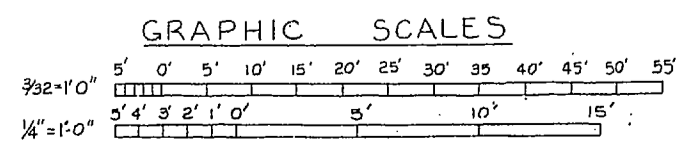
NOTE: SIZE OF STORM DRAINAGE LINES BASED ON 3/16" FT SLOPE.

REVISIONS			
SYM	DESCRIPTION	DATE	APPROVED



**LEGEND**

- SOIL OR WASTE PIPING
- VENT PIPING
- STORM DRAINAGE PIPING (UNDERFLOOR & UNDERGROUND)
- COLD WATER PIPING
- HOT WATER PIPING
- HOT WATER RETURN PIPING
- RL — ROOF LEADER PIPING
- C.O. — CLEAN OUT
- W.H. — WALL HYDRANT
- R.D. — ROOF DRAIN
- V.T.R. — VENT THRU ROOF
- H.B. — HOSE BIBB
- C.I. — CAST IRON
- P-1 — WATER CLOSET
- P-2 — LAVATORY
- P-3 — URINAL
- P-4 — MOP SINK
- P-5 — ELECTRIC WATER COOLER
- GATE VALVE IN HORIZONTAL RUN
- GATE VALVE IN VERTICAL RISE
- CHECK VALVE



REF NO SH. P.1	J. N. PEASE ASSOCIATES CHARLOTTE, NORTH CAROLINA ARCHITECTS-ENGINEERS	DEPARTMENT OF THE NAVY BUREAU OF YARDS & DOCK ATLANTIC DIVISION NORFOLK 11, VIRGINIA
DESIGNED BY FRED. W. M. MACKINTOSH, AIA, P.E.	DATE APR 24 1964	CAMP LEJEUNE MARINE CORPS BASE
DRILLING/DOCKING BY DATE	APPROVED DATE	FORCE TROOP ADMIN

