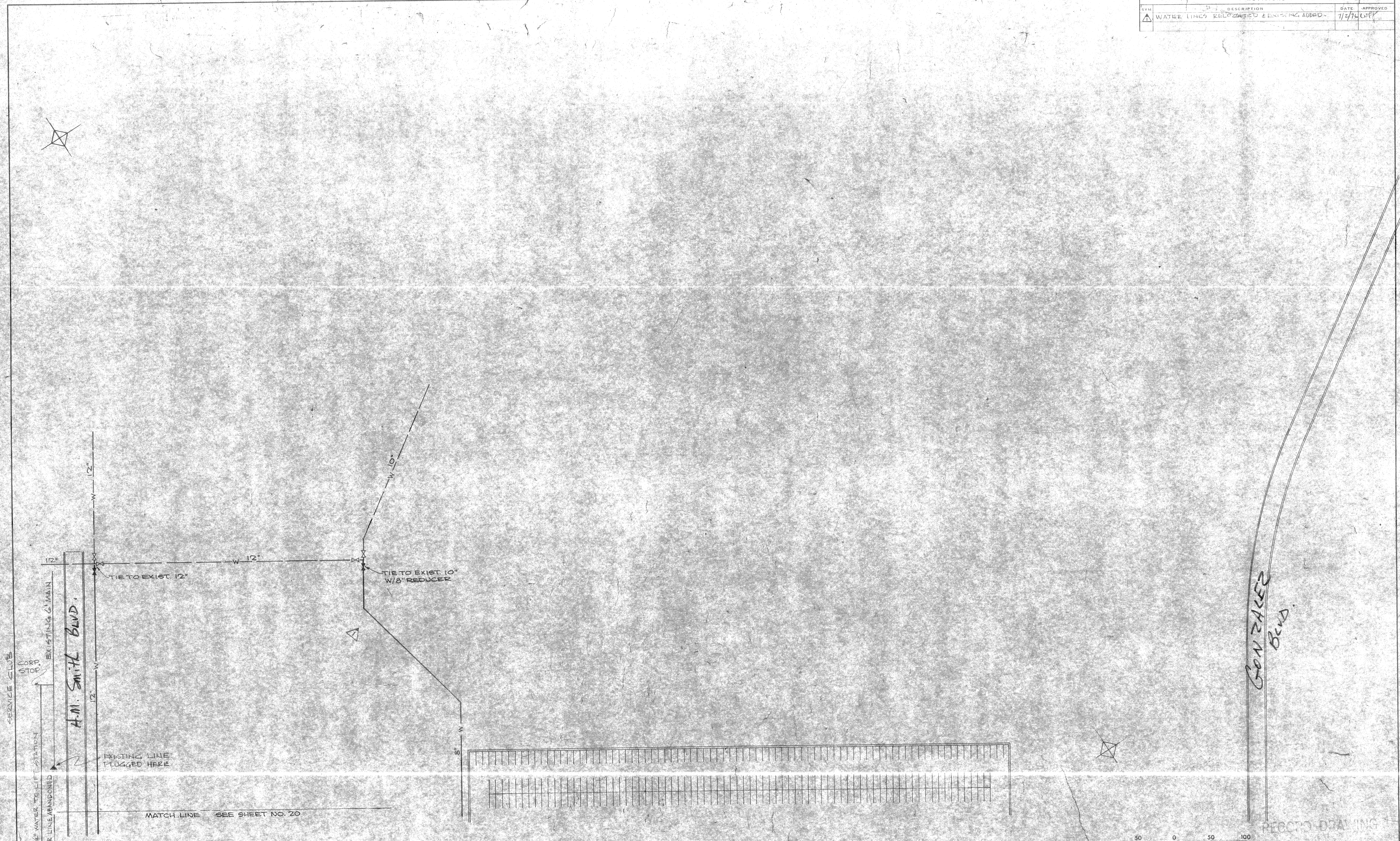


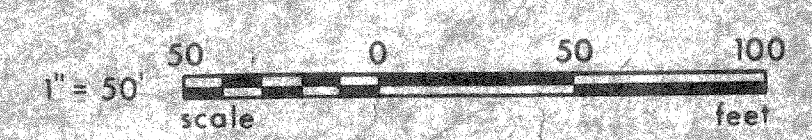
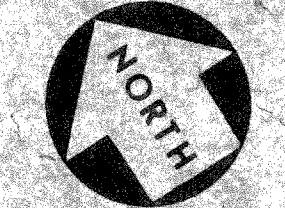
REVISIONS			
SYM	DESCRIPTION	DATE	APPROVED
Δ	WATER LINES RELOCATED & EXISTING ADDED	7/2/46	WPK



MATCH LINE SEE SHEET NO. 20

FOR UTILITY DETAILS SEE SHEET NO. 24

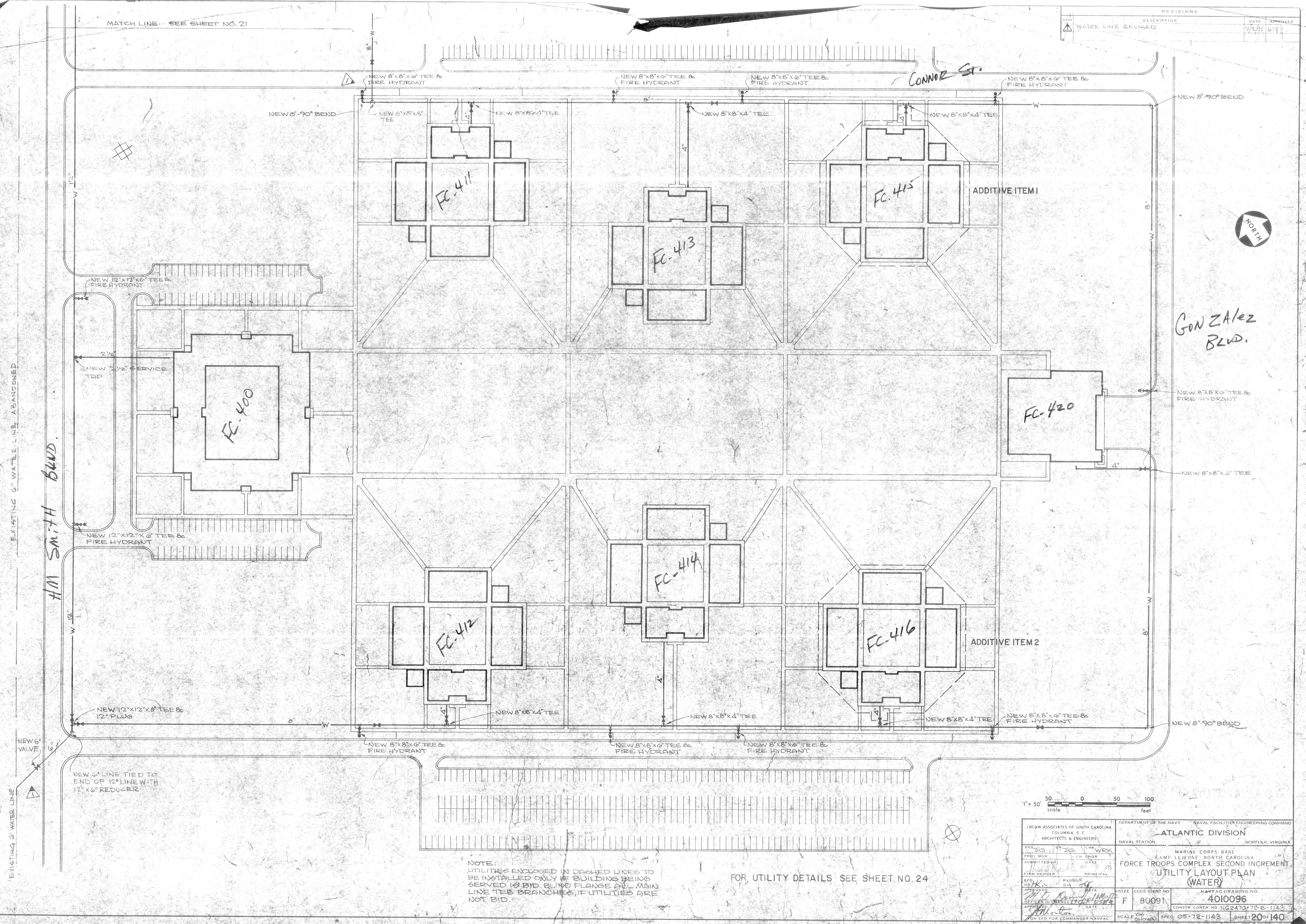
MARCH NAVFAC
4010096



DEPARTMENT OF THE NAVY NAVAL FACILITIES ENGINEERING COMMAND ATLANTIC DIVISION NAVAL STATION NORFOLK, VIRGINIA		MARINE CORPS BASE CAMP LEJEUNE NORTH CAROLINA FORCE TROOPS COMPLEX SECOND INCREMENT UTILITY LAYOUT PLAN (WATER)	
DES. 36 PROJ. MGR. 36 SUBMITTED BY 36 DATE 1/2/46 PLAN NUMBER 10246 PRINCIPAL WPK E.P.D. WPK APPROVED WPK DATE 7/2/46 SPEC. CHG. 10246 DATE 7/2/46 FOR E.P.D. FOR COMMANDER NAVFAC	SIZE F CODE IDENT NO. 80091	NAVFAC DRAWING NO. 4010097 CONSTR. CONTR. NO. N62470-72-B-143	SCALE 1/8" = 1'-0" SPEC. 05-72-1143 SHEET 2 OF 140 E.P.D. NO. 110097

MATCH LINE - SEE SHEET NO. 21

SYMBOL	DESCRIPTION	DATE	APPROVED
△	WATER LINE REVISED	7/2/51	WJ

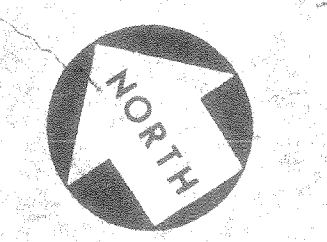


EXISTING 6" WATER LINE ABANDONED

AM SMITH BLVD.

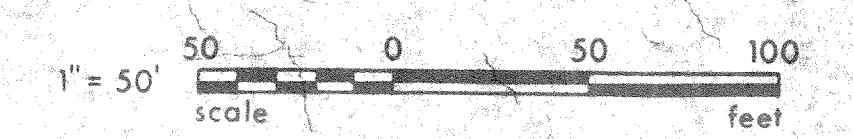
CONNOR ST.

GONZALEZ BLVD.



NOTE:
UTILITIES ENCLOSED IN DASHED LINES TO
BE INSTALLED ONLY IF BUILDING BEING
SERVED IS BID. BLIND FLANGE ON MAIN
LINE TEE BRANCHES, IF UTILITIES ARE
NOT BID.

FOR UTILITY DETAILS SEE SHEET NO. 24



LECBW ASSOCIATES OF SOUTH CAROLINA COLUMBIA S.C. ARCHITECTS & ENGINEERS		DEPARTMENT OF THE NAVY NAVAL FACILITIES ENGINEERING COMMAND ATLANTIC DIVISION NAVAL STATION NORFOLK, VIRGINIA	
DESIGNED BY SUBMITTED BY FIRM MEMBER	DATE DATE DATE	CHECKED BY DATE DATE	WORK DATE DATE
APPROVED DATE		PRINCIPAL	
NEW 6" VALVE		NEW 6" LINE TIED TO END OF 12" LINE WITH 12" X 6" REDUCER	
SCALE 2" = 10'		SCALE 05-72-1143	
PROJECT NO. 80091		NAVYAC DRAWING NO. 4010096	
CONSTR. CONTR. NO. NC247072-E-1143		SHEET 20 OF 140	
FOR CTO FOR COMMANDER NAVFAC		110096	

