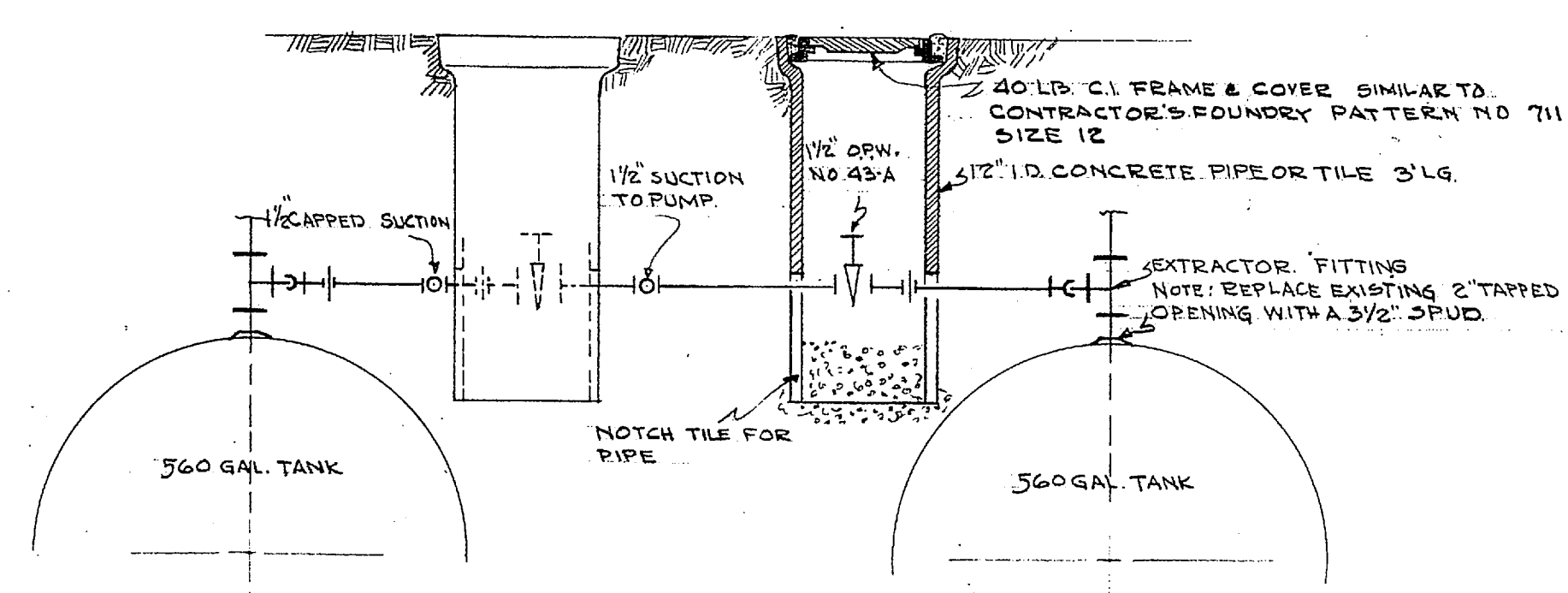


POST GARAGE  
Scale 1"=30'

DIVISION GARAGE  
Scale 1"=30'

REVISION 'A'  
2-2-43



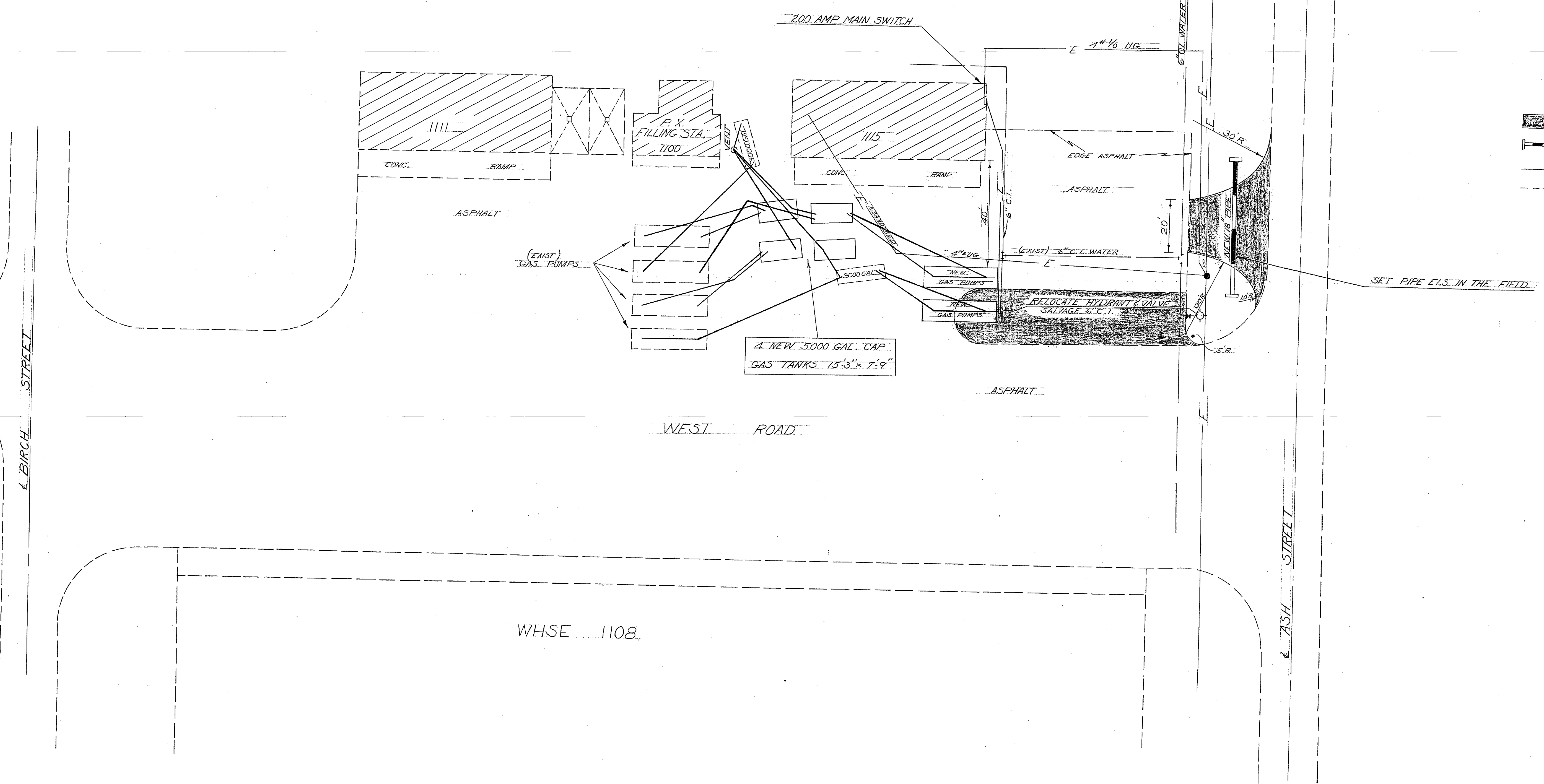
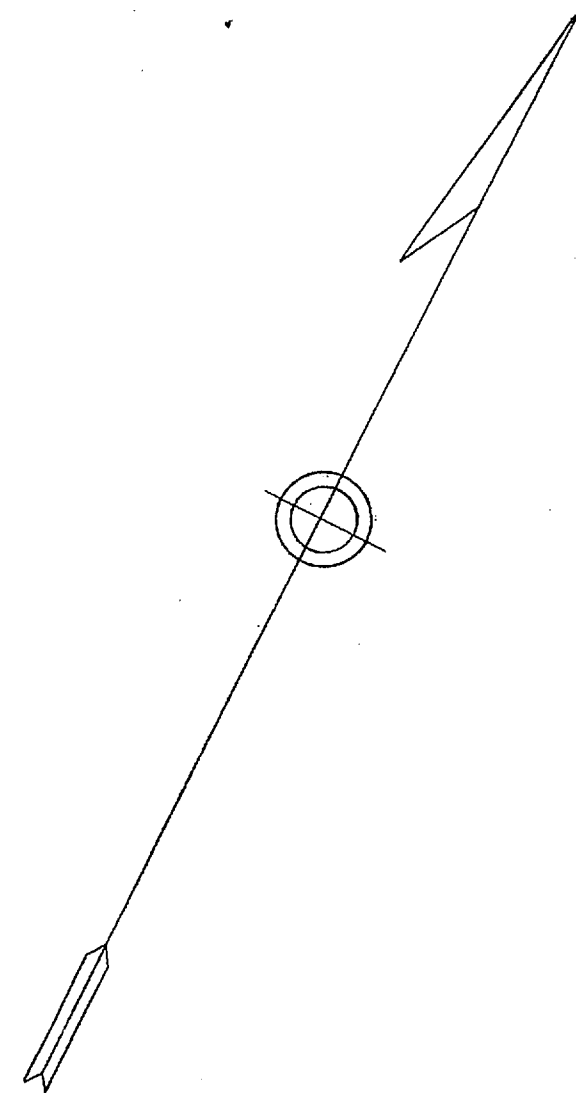
DETAIL 'A'  
Scale 3/4"=1'-0"

NOTE:  
FOR ALL DETAILS NOT SHOWN ON THIS DRAWING SEE  
M.B. DWG. No 3628 "PUMP & TANK INSTALLATION DETAILS"

DRAWN BY <u>JK-SW</u>	CARR & J. E. GREINER CO.—ARCHITECT-ENGINEERS DURHAM, N. C. BALTIMORE, MD.	
TRACED BY <u>SW</u>	MARINE BARRACKS—NEW RIVER, N. C. BUREAU OF YARDS AND DOCKS — U. S. NAVY	
CHECKED BY <u>SW</u>	INDUSTRIAL AREA	
CHIEF DPMN <u>CSB</u>	POST & DIVISION GARAGES	
IN CHARGE <u>CSB</u>	GASOLINE SYSTEMS	
DATE <u>7-2-42</u>	Y. & D. DRAWING NO. <b>228811</b>	
SCALE <u>SHOWN</u>	ARCHITECT-ENGINEERS SPECIFICATION	P-221-5 P-228
APPROVED <u>[Signature]</u>	BY <u>[Signature]</u>	M.B. DWG. NO. <u>4674</u>

REVISION	DATE	BRIEF	R.O. IN CHARGE	BY
"B"	11-30-43	Revised Street Names	<u>CSB</u>	<u>JK</u>
"A"	2-2-43	STORAGE TANKS RELOCATED (AS BUILT)	<u>Reid</u>	<u>SW</u>





**LEGEND**

	NEW ASPHALT PAVING
	NEW 18" PIPE
	NEW CONSTRUCTION
	EXIST CONSTRUCTION

THIS DRAWING SUPERSEDES Y & D 486946 AND SHOWS FINAL LOCATION OF TANKS AS INSTALLED BY MAINTENANCE FORCES

REVISION	DATE	APPD.	DESCRIPTION	BY
P.W. DRAWING NO.		MARINE BARRACKS		
8071		CAMP LEJEUNE, N. C.		
DES.	P.X. FILLING STATION			
DRWN	BLDG 1100			
TR	INSTALLATION OF ADDITIONAL			
CHK	GAS PUMPS & TANKS			
SUPV				
APPROVED		STEPHEN PAYSON		DATE
		PUBLIC WORKS OFFICER		16 May 1951
IN CHARGE		SCALE 1" = 20'		SPEC
APPROVED		SHEET 1 OF 1		NOY
DATE		THE QUARTERMASTER GENERAL OF THE MARINE CORPS		Y & D DRAWING NO. 487071

