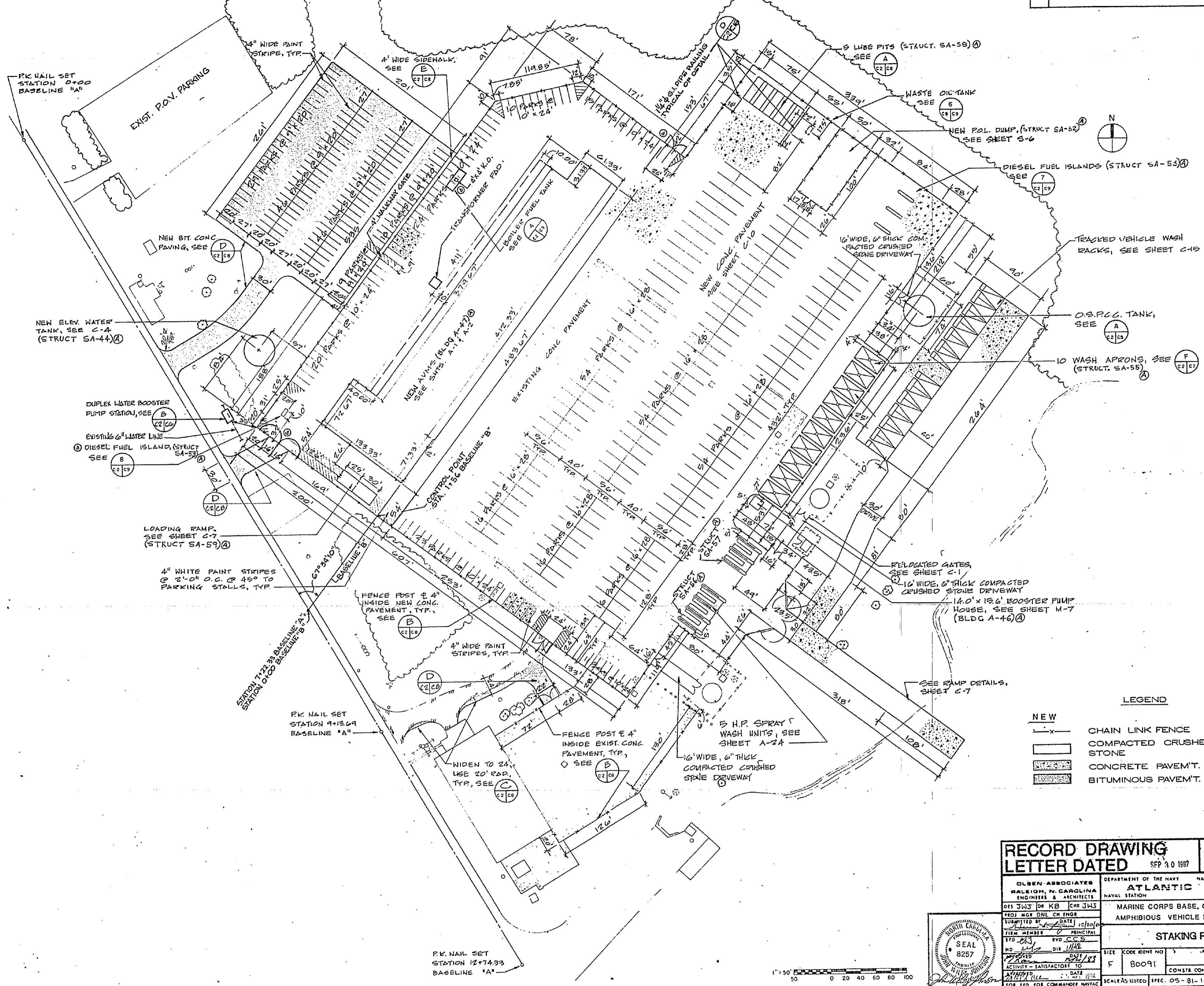


SYM	DESCRIPTION	DATE	BY	CHK
Ⓜ	REVISED AS-BUILT	1-21-88	LM	LM

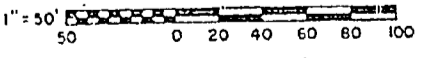
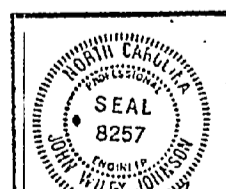


**LEGEND**

— x —	NEW CHAIN LINK FENCE	- - - - -	EXIST. CHAIN LINK FENCE
▭	NEW COMPACTED CRUSHED STONE	▭	EXIST. COMPACTED CRUSHED STONE
▨	NEW CONCRETE PAVEMENT	▨	EXIST. CONCRETE PAVEMENT
▩	NEW BITUMINOUS PAVEMENT	▩	EXIST. BITUMINOUS PAVEMENT

**RECORD DRAWING**  
**LETTER DATED SEP 30 1987** **C-2**

<small>DESIGNED BY</small> <small>DRAWN BY</small> <small>CHECKED BY</small> <small>DATE</small>	<small>DEPARTMENT OF THE NAVY</small> <b>ATLANTIC DIVISION</b> <small>NAVAL STATION</small> <small>NOBROOK, VIRGINIA</small>
<small>PROJECT NO.</small> <small>SCALE</small>	<small>MARINE CORPS BASE, CAMP LEJEUNE, N.C.</small> <small>AMPHIBIOUS VEHICLE MAINTENANCE SHOP</small>
<small>ISSUED</small> <small>DATE</small>	<b>STAKING PLAN</b>
<small>SCALE AS NOTED SPEC. 05-81-14.22</small>	<small>NAVFAC DRAWING NO.</small> <small>CONSTR. CONTR. NO.</small>



DATE	


1432834 PWS



REVISIONS		
BY	DESCRIPTION	DATE APPROVED
①	REVISED AS-BUILT	1-23-83

T.B.M. #1 - SPIKE SET IN P.P. NORTH SIDE OF ENTRANCE ROAD. ELEV. = 14.12

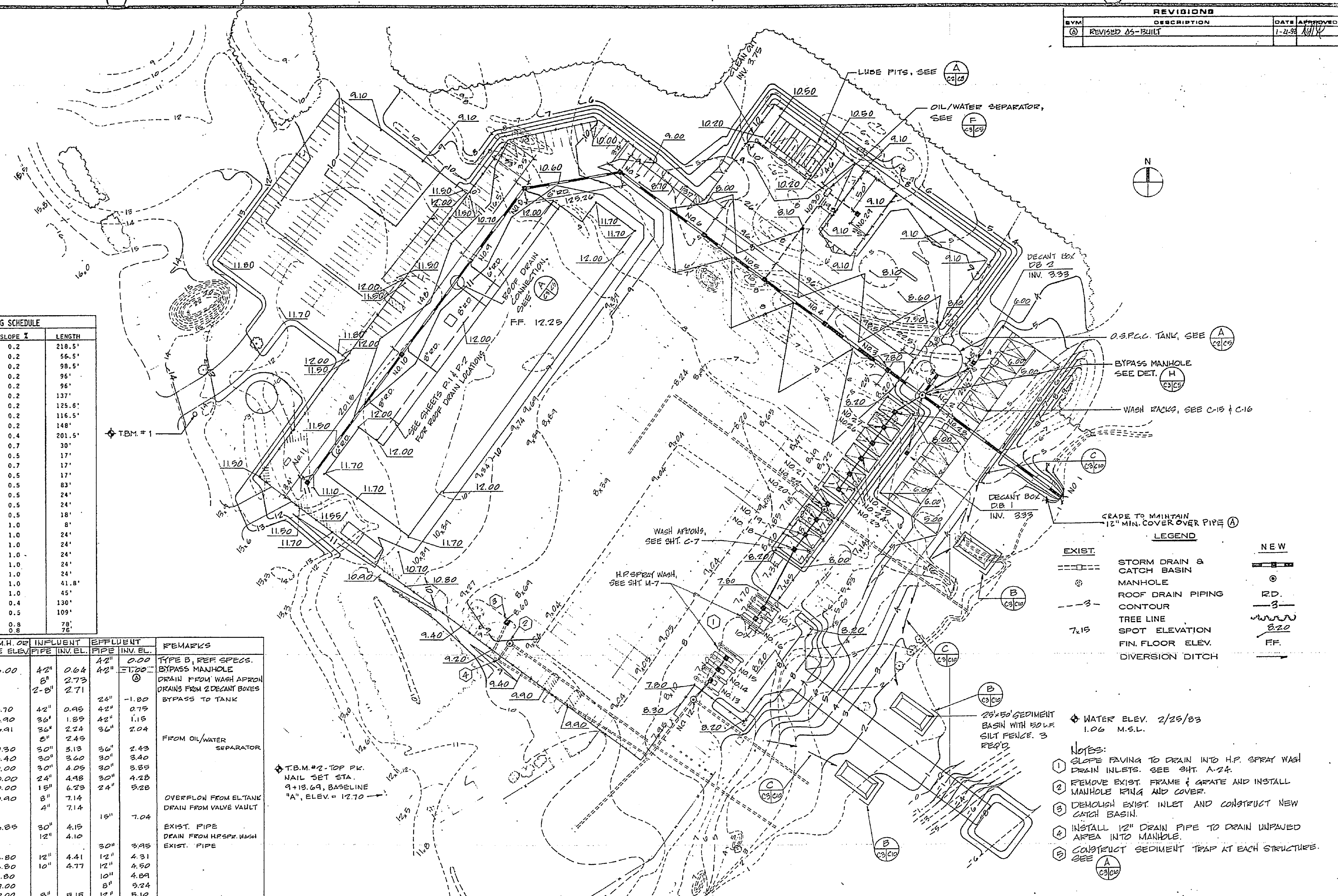
STORM DRAIN PIPING SCHEDULE			
STRUCTURE	PIPE #	SLOPE %	LENGTH
1-2	42	0.2	218.5'
2-3	42	0.2	56.5'
3-4	42	0.2	98.5'
4-5	36	0.2	96'
5-6	36	0.2	96'
6-7	30	0.2	137'
7-8	30	0.2	125.8'
8-9	30	0.2	116.5'
9-10	24	0.2	148'
10-11	15	0.4	201.5'
12-13	12	0.7	30'
13-14	12	0.5	17'
14-15	10	0.7	17'
16-17	8	0.5	17'
17-18	12	0.5	83'
18-19	12	0.5	24'
19-20	12	0.5	24'
20-22	12	0.5	18'
21-22	8	1.0	8'
23-24	8	1.0	24'
24-25	8	1.0	24'
25-26	8	1.0	24'
26-27	8	1.0	24'
27-28	8	1.0	24'
28-2	8	1.0	41.8'
29-30	8	1.0	45'
30-5	8	0.4	130'
CLEAN-OUT-30	6	0.5	109'
DB 1-2	8	0.8	78'
DB 2-2	8	0.8	78'

STRUCTURE NUMBER	STRUCTURE TYPE	TOP M.H. OR GRATE ELEV.	INFLUENT PIPE INV. ELEV.	EFFLUENT PIPE INV. ELEV.	REMARKS
1	HEADWALL	6.00	42"	42"	TYPE B, REF SPECS.
2	M.H.	6.00	42"	42"	BYPASS MANHOLE
3	C.B.	6.70	42"	42"	DRAIN FROM WASH APRON
4	C.B.	6.90	36"	36"	DRAIN FROM 2 DECANT BOXES
5	C.B.	6.91	36"	36"	DRAIN FROM 2 DECANT BOXES
6	C.B.	7.30	36"	36"	BYPASS TO TANK
7	C.B.	8.40	30"	30"	FROM OIL/WATER SEPARATOR
8	C.B.	10.00	30"	30"	
9	C.B.	10.00	24"	30"	
10	C.B.	10.00	15"	24"	
11	C.B.	10.40	8"	24"	OVERFLOW FROM EL-TANK
12	EXIST. M.H.	6.85	30"	15"	DRAIN FROM VALVE VAULT
13	C.B.	6.80	12"	30"	EXIST. PIPE
14	C.B.	6.80	12"	30"	EXIST. PIPE
15	C.B.	6.80	10"	30"	
16	C.B.	7.00	10"	30"	
17	C.B.	7.00	8"	30"	
18	C.B.	7.00	12"	30"	
19	C.B.	7.00	12"	30"	
20	C.B.	7.00	12"	30"	
21	C.B.	7.00	12"	30"	
22	M.H.	7.18	12"	8"	DRAIN FROM WASH APRON
23	C.B.	7.00	14" x 30"	8"	EXIST. PIPE
24	C.B.	7.00	8"	8"	
25	C.B.	7.00	8"	8"	
26	C.B.	7.00	8"	8"	
27	C.B.	7.00	8"	8"	
28	C.B.	7.00	8"	8"	
29	C.B.	8.60	8"	8"	
30	OIL/WATER SEPARATOR	8.60	8"	8"	DRAIN FROM LUBE PITS

T.B.M. #1

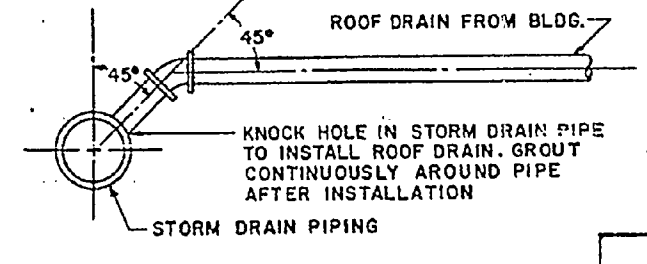
T.B.M. #2 - TOP PK. NAIL SET STA. 9+13.69, BASELINE "A", ELEV. = 12.70

T.B.M. #3 - TOP PK. NAIL SET STATION 12+74.33 BASELINE "A" ELEV. = 7.38

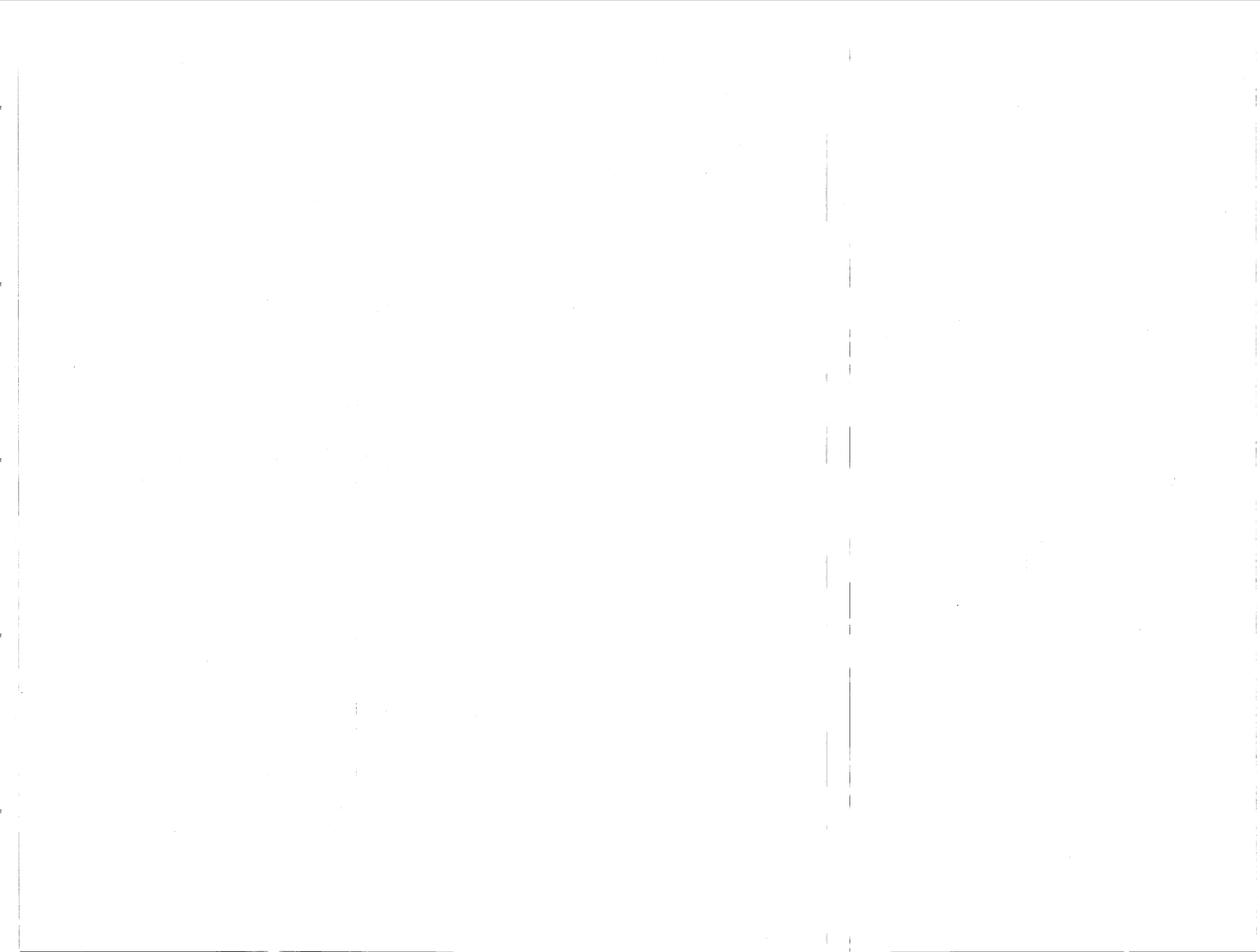


LEGEND	
EXIST.	NEW
--- (dashed line)	--- (solid line)
⊙ (circle with dot)	⊙ (circle with dot)
--- (dashed line)	--- (solid line)
--- (dashed line)	--- (solid line)
7.15 (number)	7.15 (number)
--- (dashed line)	--- (solid line)

- NOTES:
- SLOPE PAVING TO DRAIN INTO H.P. SPRAY WASH DRAIN INLETS. SEE SHT. A-24.
  - REMOVE EXIST. FRAME & GRATE AND INSTALL MANHOLE RING AND COVER.
  - DEMOLISH EXIST. INLET AND CONSTRUCT NEW CATCH BASIN.
  - INSTALL 12" DRAIN PIPE TO DRAIN UNPAVED AREA INTO MANHOLE.
  - CONSTRUCT SEDIMENT TRAP AT EACH STRUCTURE. SEE (A) C-3/C-4.



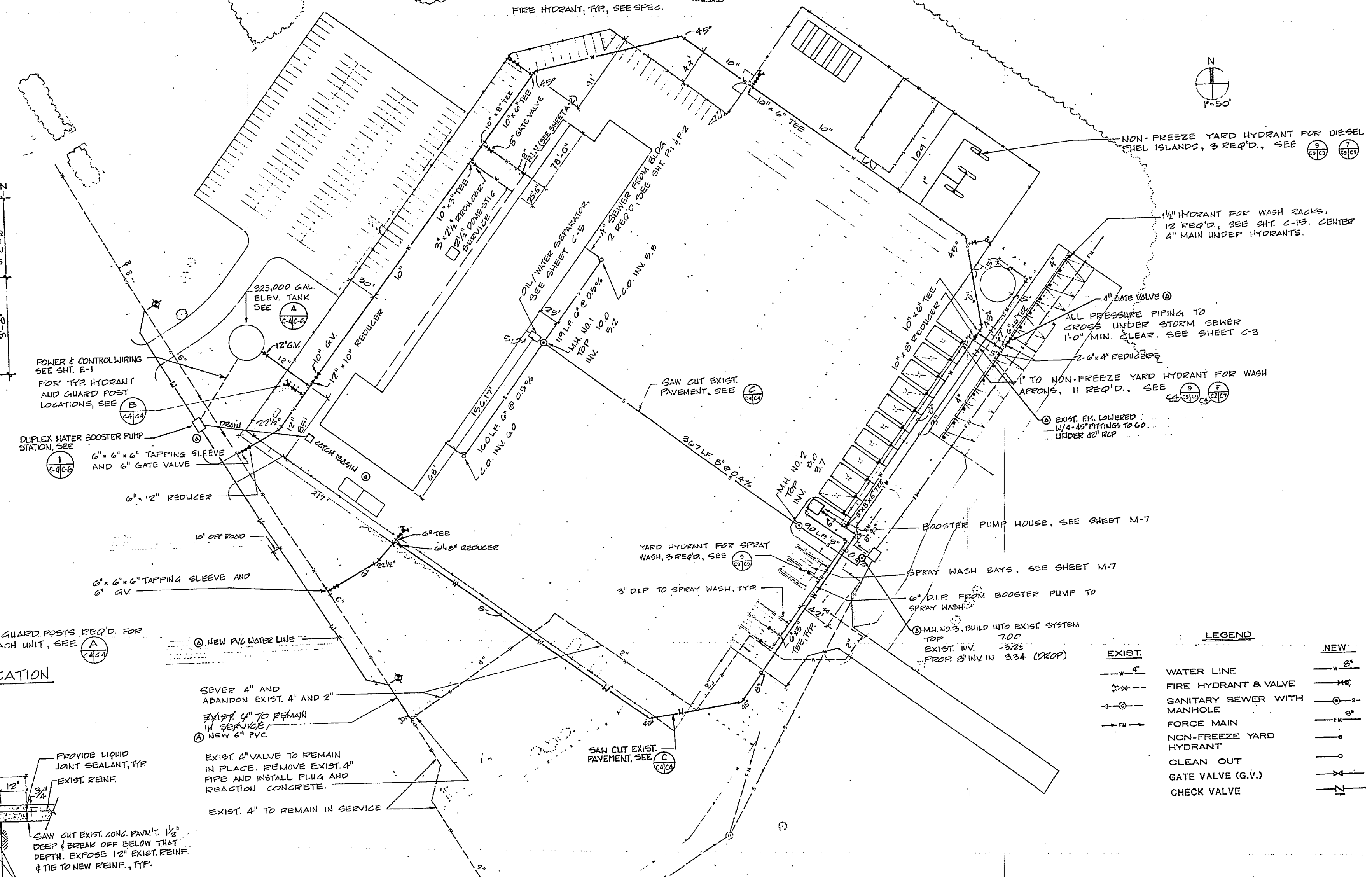
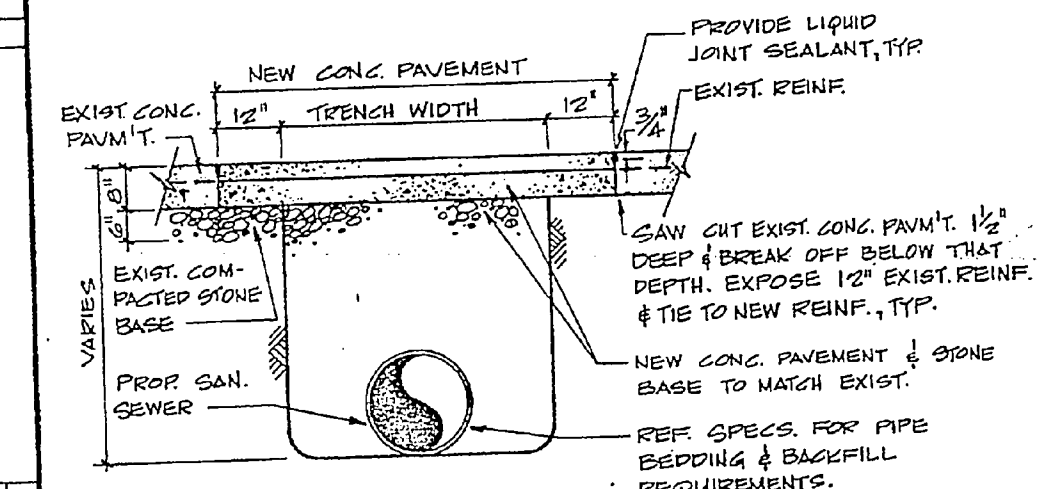
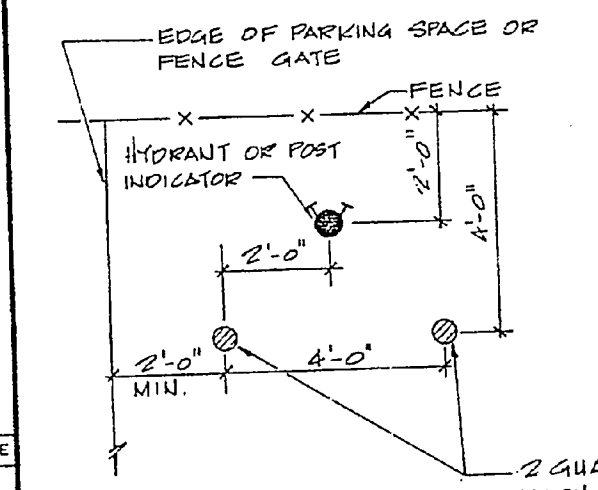
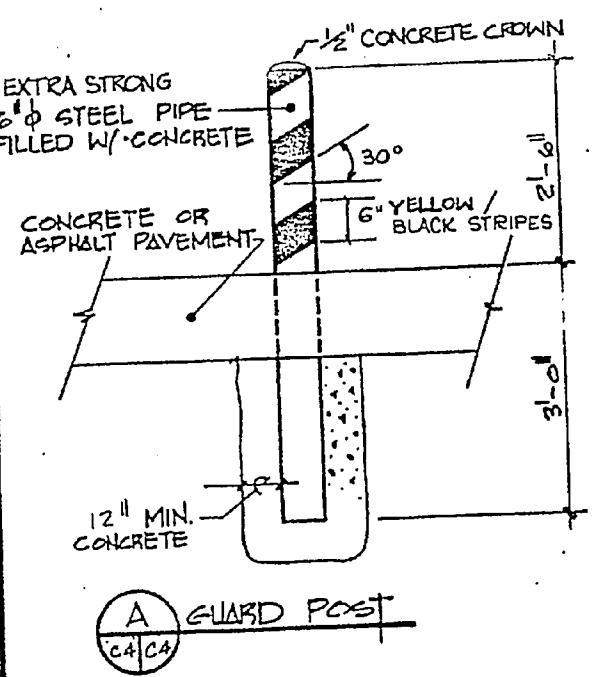
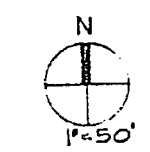
<b>RECORD DRAWING</b>		<b>LETTER DATED</b> SEP 30 1987		<b>C-3</b>	
OLSEN ASSOCIATED RALEIGH, N. CAROLINA ENGINEERS & ARCHITECTS		DEPARTMENT OF THE NAVY NAVAL FACILITIES ENGINEERING COMMAND ATLANTIC DIVISION NAVAL STATION NOFV, VIRGINIA		MARINE CORPS BASE, CAMP LEJUNE, N.C. AMPHIBIOUS VEHICLE MAINTENANCE SHOP	
DRAWN BY: [Signature]		CHECKED BY: [Signature]		SCALE: AS SHOWN	
NO. 153		DATE: 11/21/83		SHEET 4 OF 82	
ACTIVITY: SATISFACTORY TO		CONSIDER CONTR. NO. NS2470-81-B-1842		DRAWING NO. 4098889	
FOR INFO FOR COMMANDER NAVAC		SCALE: AS SHOWN SPEC. OS-81-1642		198888910 DWG NO.	





REVISIONS	DATE APPROVED
BYM	
REVISED 05-BUILT	7-21-88

FIRE HYDRANT, TYP. SEE SPEC.



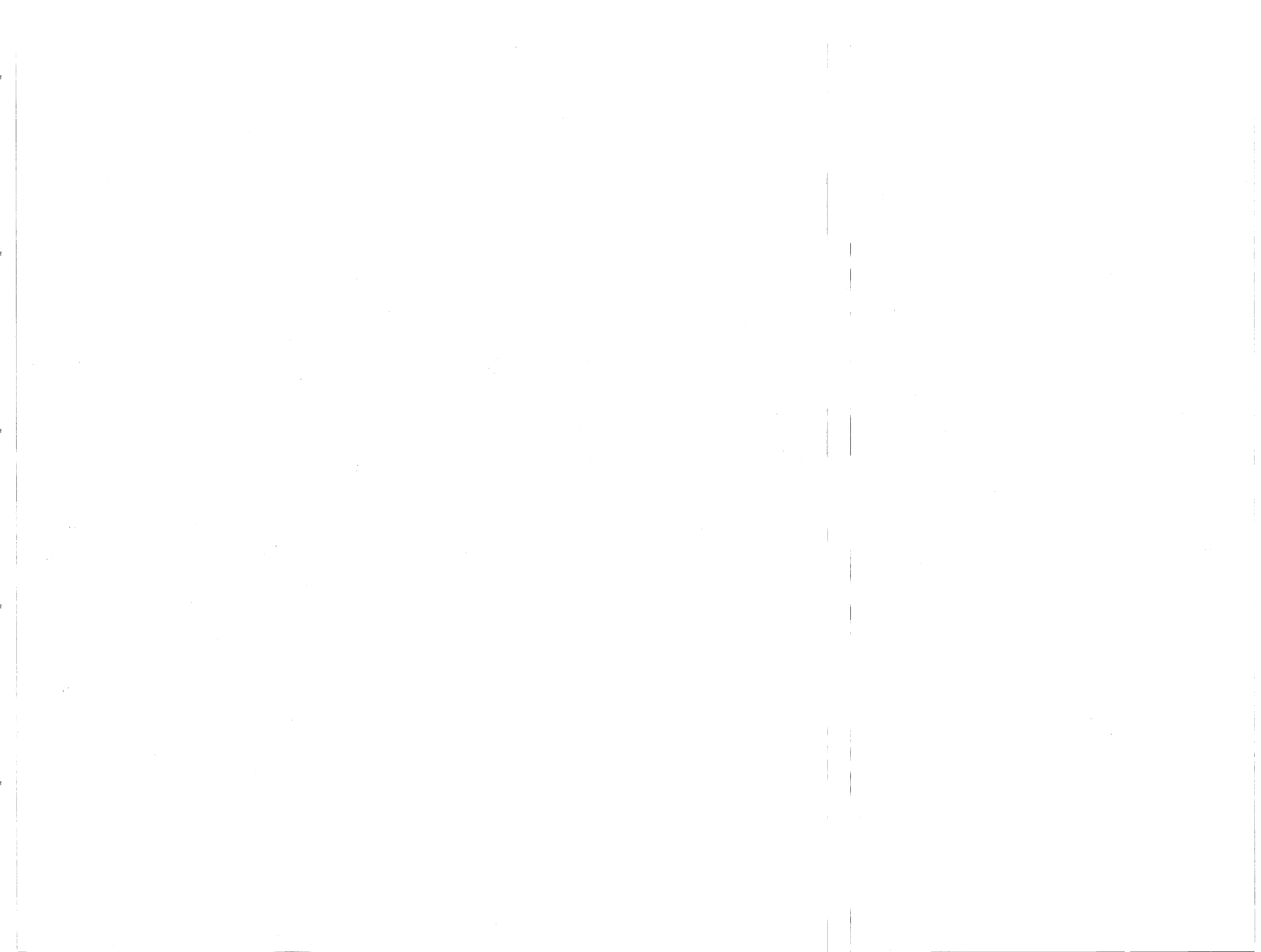
LEGEND	
EXIST.	NEW
---	6"
---	10"
---	12"
---	18"
---	24"
---	36"
---	48"
---	60"
---	72"
---	90"
---	108"
---	126"
---	144"
---	162"
---	180"
---	216"
---	252"
---	288"
---	324"
---	360"
---	432"
---	504"
---	576"
---	648"
---	720"

DATE


**RECORD DRAWING**  
**LETTER DATED** SEP 30 1987 **C-4**

OLSEN ASSOCIATED RALEIGH, N. CAROLINA ENGINEERS & ARCHITECTS	DEPARTMENT OF THE NAVY NAVY FACILITIES ENGINEERING COMMAND ATLANTIC DIVISION NORFOLK, VIRGINIA NAVAL STATION MARINE CORPS BASE, CAMP LEJEUNE, N.C. AMPHIBIOUS VEHICLE MAINTENANCE SHOP
DES. J.W.J. OR KG. [initials] CHK. J.W.J. DRAFTED BY: [initials] CHK. [initials] TYP. [initials] DIA. [initials] ACTIVITY - SATISFACTORY TO [initials]	NAVAC DRAWING NO. 409890 SHEET 5 OF 92

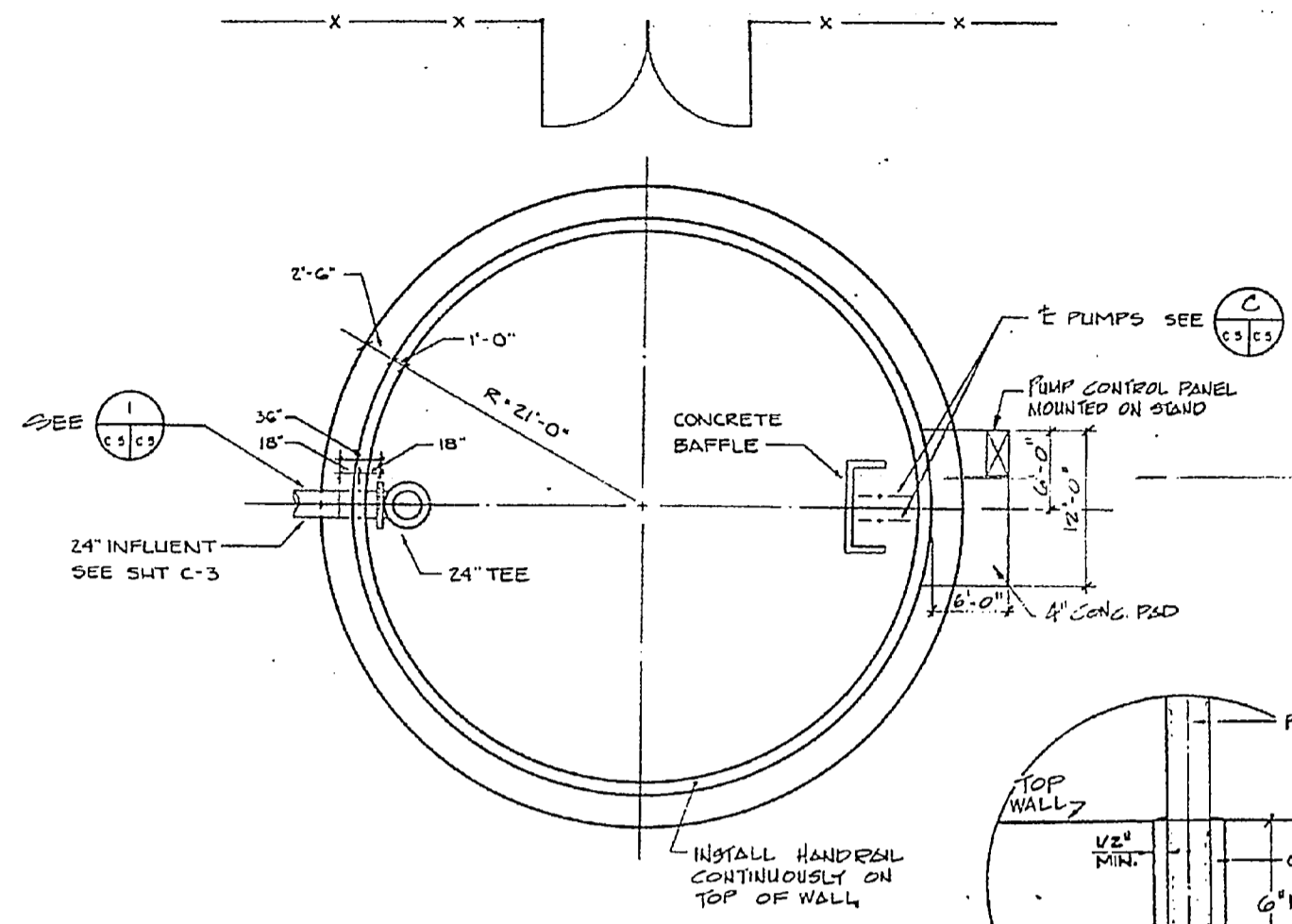
SCALE AS NOTED SPEC 05-B1-1642  
19880110 DWG NO.



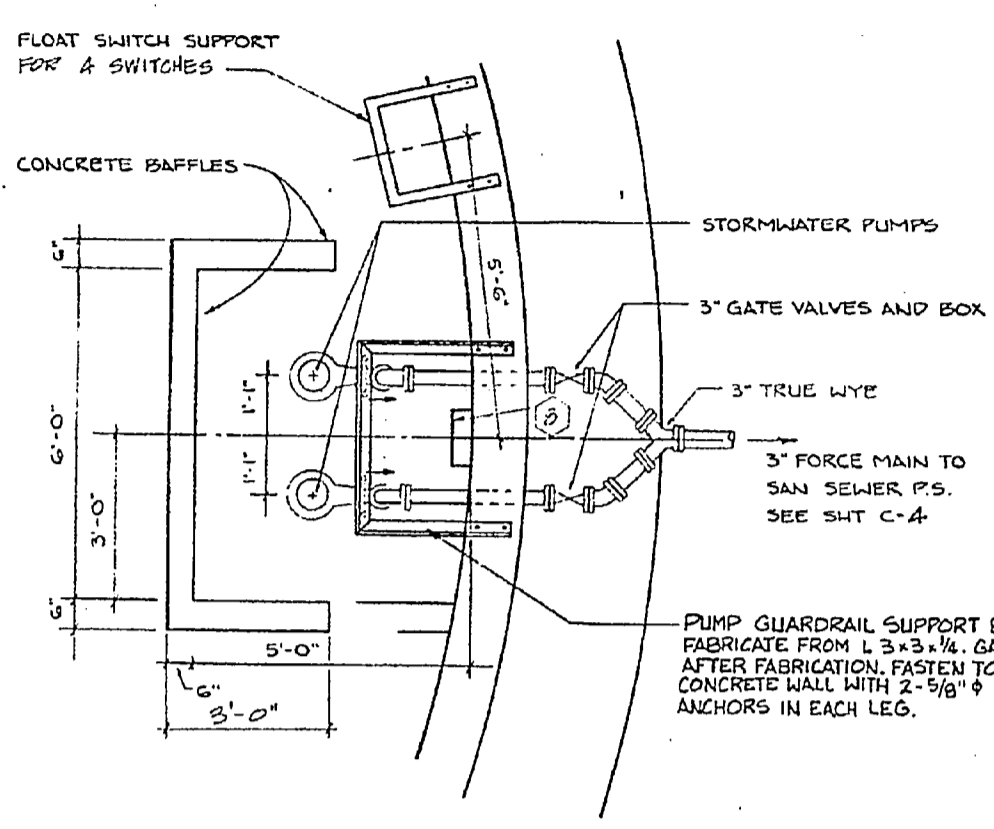
SA 42

BOAT BASIN

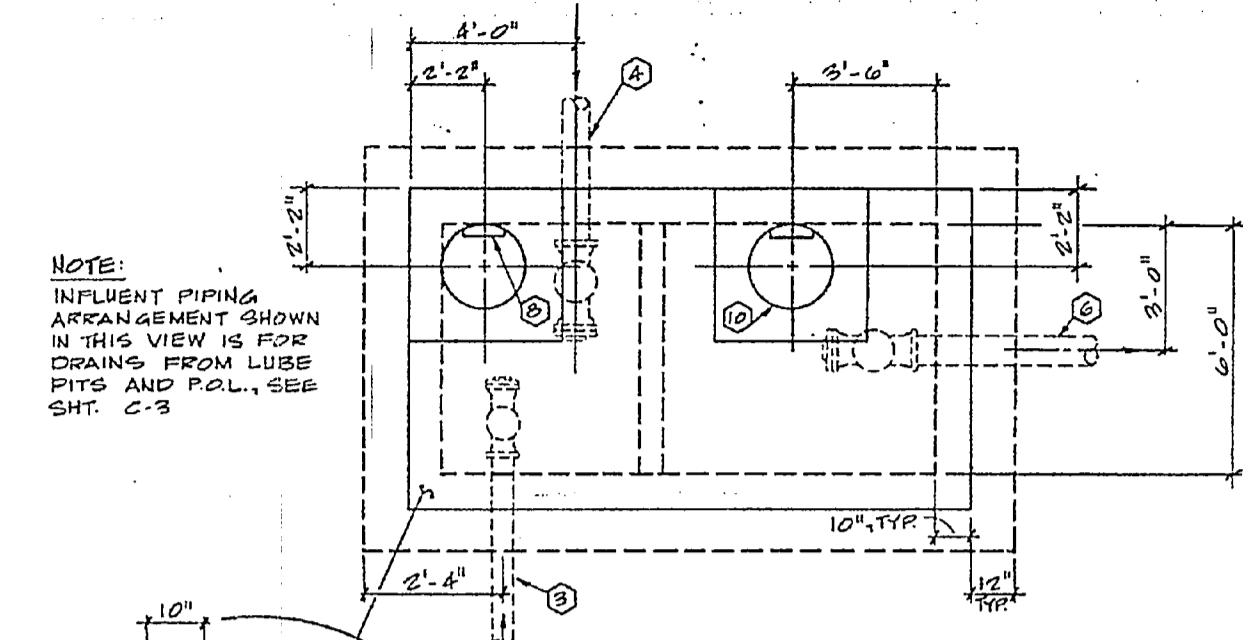
REVISIONS		
SYM	DESCRIPTION	DATE APPROVED
①	REVISED AS-BUILT	1-21-83



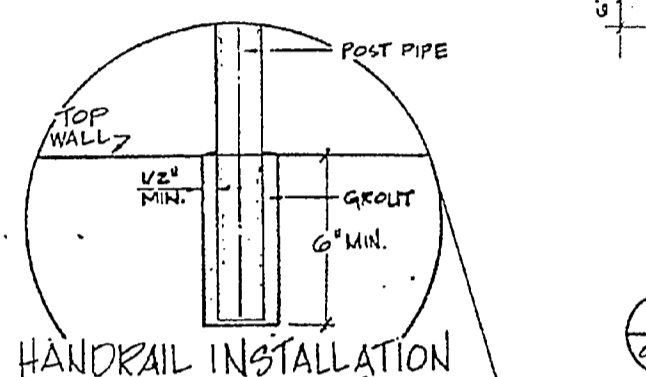
**A O.S.P.C.C. TANK PLAN**  
SCALE: 1/8" = 1'-0"



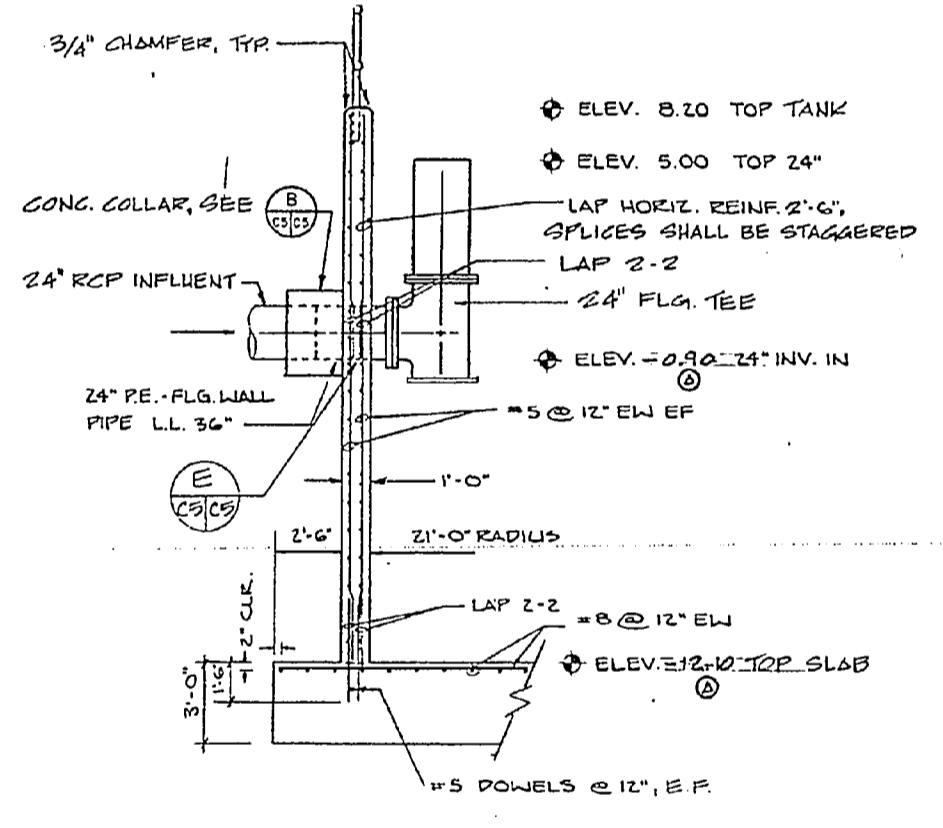
**C PLAN PUMP INSTALLATION**  
SCALE: 1/2" = 1'-0"



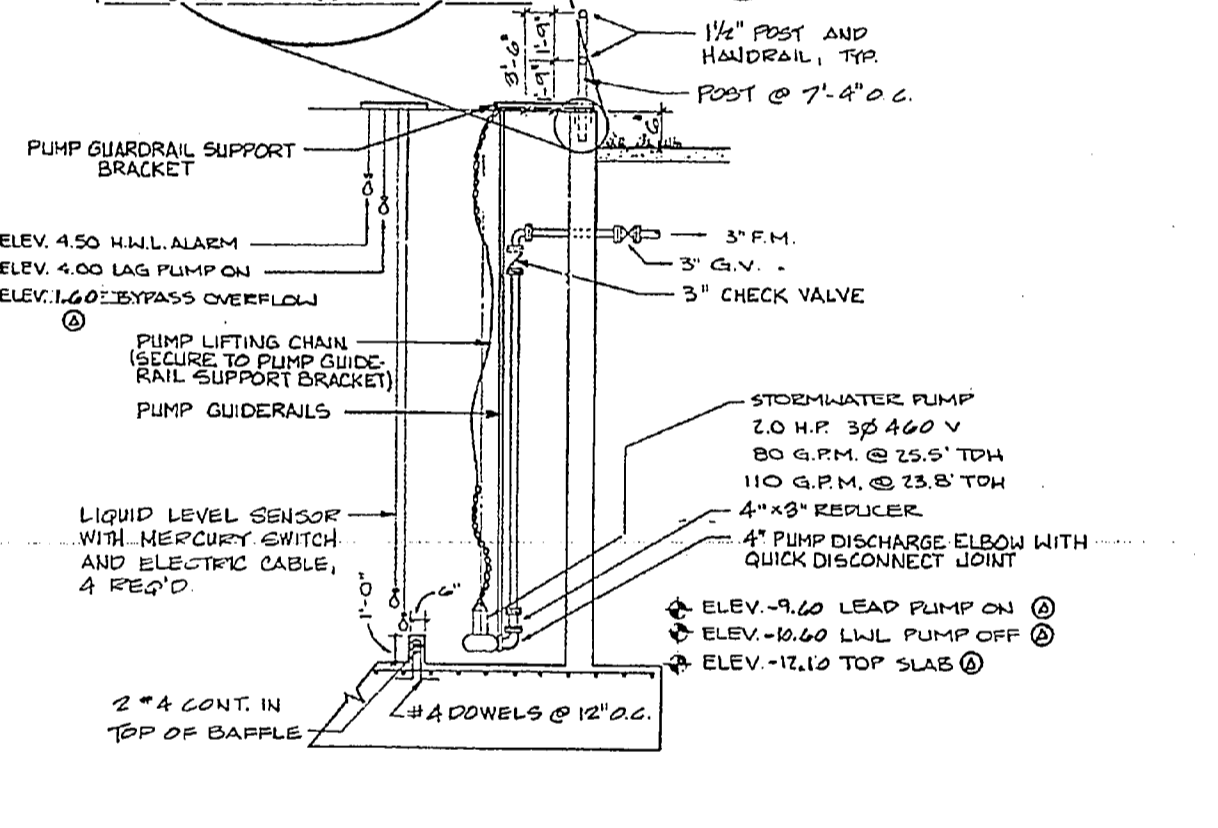
**F PLAN - OIL/WATER SEPARATOR**  
SCALE: 3/8" = 1'-0"



**HANDRAIL INSTALLATION**

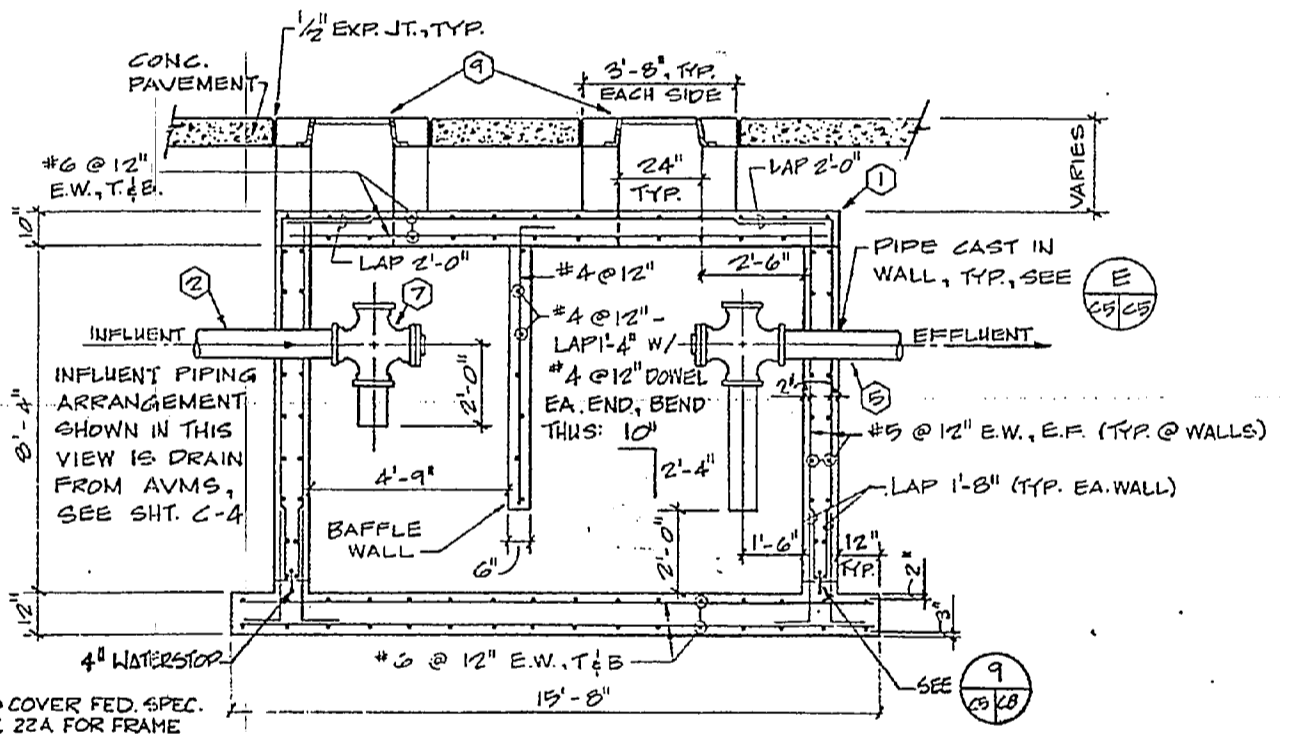


**I SECTION**  
SCALE: 1/4" = 1'-0"



**D ELEVATION PUMP INSTALLATION**  
SCALE: 1/4" = 1'-0"

- KEYNOTES**
- TWO OIL/WATER SEPARATORS REQUIRED. SEE SHTS. C-3 AND C-4 FOR LOCATIONS AND ORIENTATION.
  - 4" Ø FROM BLDG. FLOOR DRAINS, INV. = 5.7
  - 6" Ø FROM LUBE PITS, INV. = 3.2
  - 8" Ø FROM P.O.L., INV. = 3.2
  - 4" Ø TO SANITARY M.H. #1, INV. = 5.5
  - 8" Ø TO C.B. #5, INV. = 3.0
  - PROVIDE CROSS WITH PLUG ON PIPING, TYP.
  - MANHOLE STEPS @ 16", O.C., TYP.
  - NON-WATERTIGHT MANHOLE FRAME & COVER, CONFORM TO FEDERAL SPEC. RR-F-621, FIG. 1, SIZE 22A FOR FRAME AND FIG. 8, SIZE 22A FOR COVER.
  - 24" DIAM. OPENING, SEE E



**G OIL/WATER SEPARATOR DETAIL**  
SCALE: 3/8" = 1'-0"

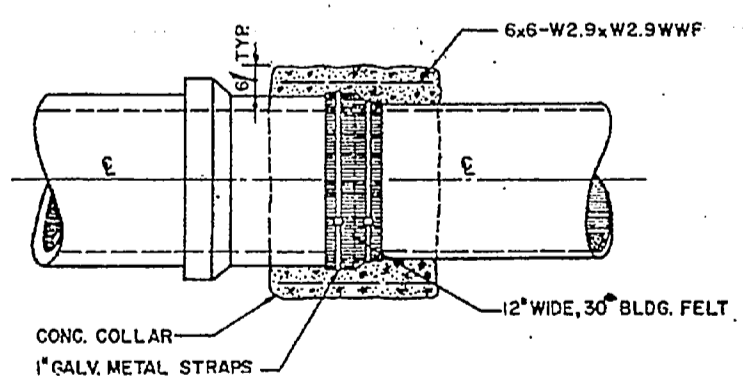
**GRAPHIC SCALES**

0 5 10 1/8" = 1'-0"

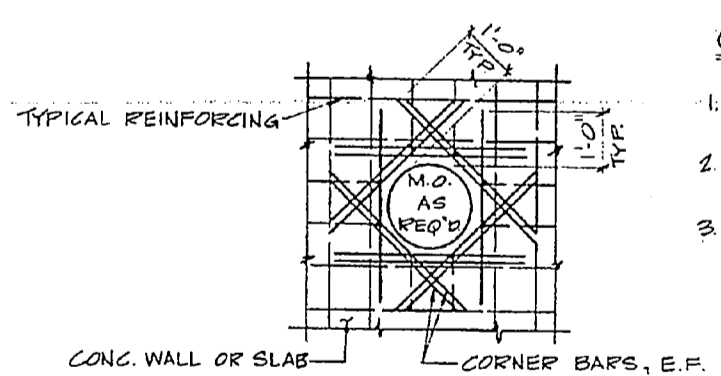
0 5 10 1/4" = 1'-0"

0 1 2 3 4 5 3/8" = 1'-0"

0 1 2 3 4 5 1/2" = 1'-0"

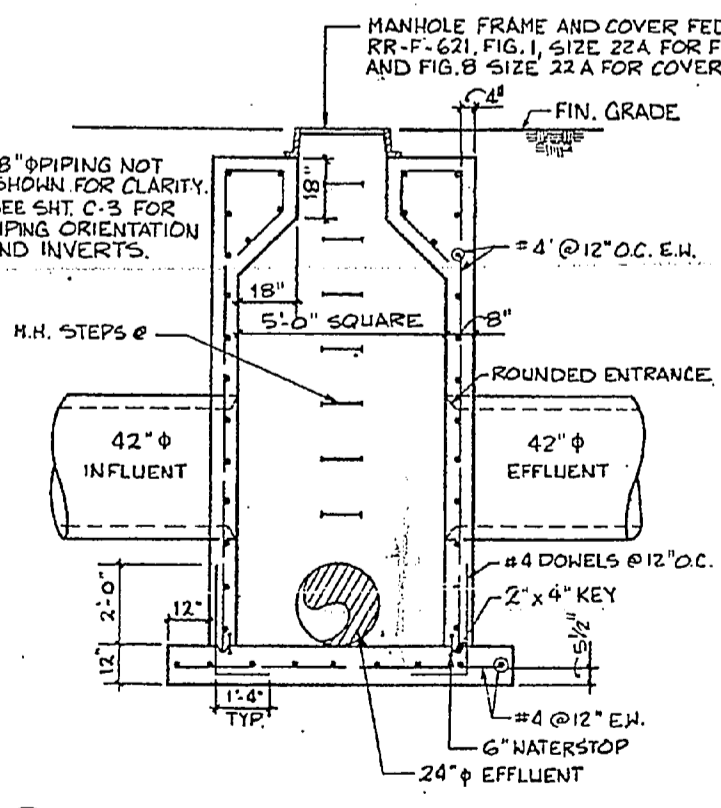


**B CONCRETE COLLAR DETAIL**  
NOT TO SCALE



**E CONCRETE OPNG. REINF. DETAIL**  
NOT TO SCALE

- GENERAL NOTES**
- PROVIDE HORIZONTAL & VERTICAL BARS TO MATCH SLAB OR WALL.
  - 180° HOOK TYP. REINF. @ ALL DISCONTINUED ENDS.
  - PROVIDE 180° HOOK ON ADD'L. REINF. AROUND OPNG. WHERE 1'-0" DIMENSION CANNOT BE PROVIDED.



**H BYPASS MANHOLE DETAIL**  
NOT TO SCALE

*Alex Baffle Post in Manhole*  
93-0224

**RECORD DRAWING**  
LETTER DATED SEP 30 1987 C-5

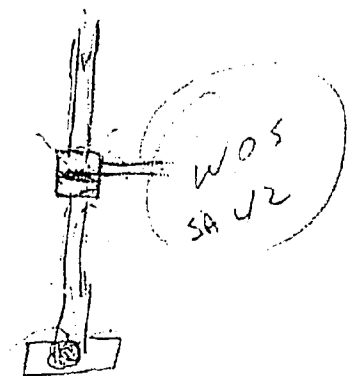
OLSEN ASSOCIATES  
RALEIGH, N. CAROLINA  
ENGINEERS & ARCHITECTS

DEPARTMENT OF THE NAVY  
NAVAL FACILITIES ENGINEERING COMMAND  
ATLANTIC DIVISION  
NAVAL STATION  
MARINE CORPS BASE, CAMP LEJEUNE, N.C.  
AMPHIBIOUS VEHICLE MAINTENANCE SHOP

O.S.P.C.C. SYSTEM DETAILS

SCALE ASSIGNED SPEC 05-81-1662 SHEET 6 OF 82

*1st Print*  
425 7108  
*Proff valves in Small ones*



349

