

Brewster

46

6961.42

6480.29

6434.29

481.13

Mon # 411

50

stone

2372.64

P.C.

88+06.93

6480.29

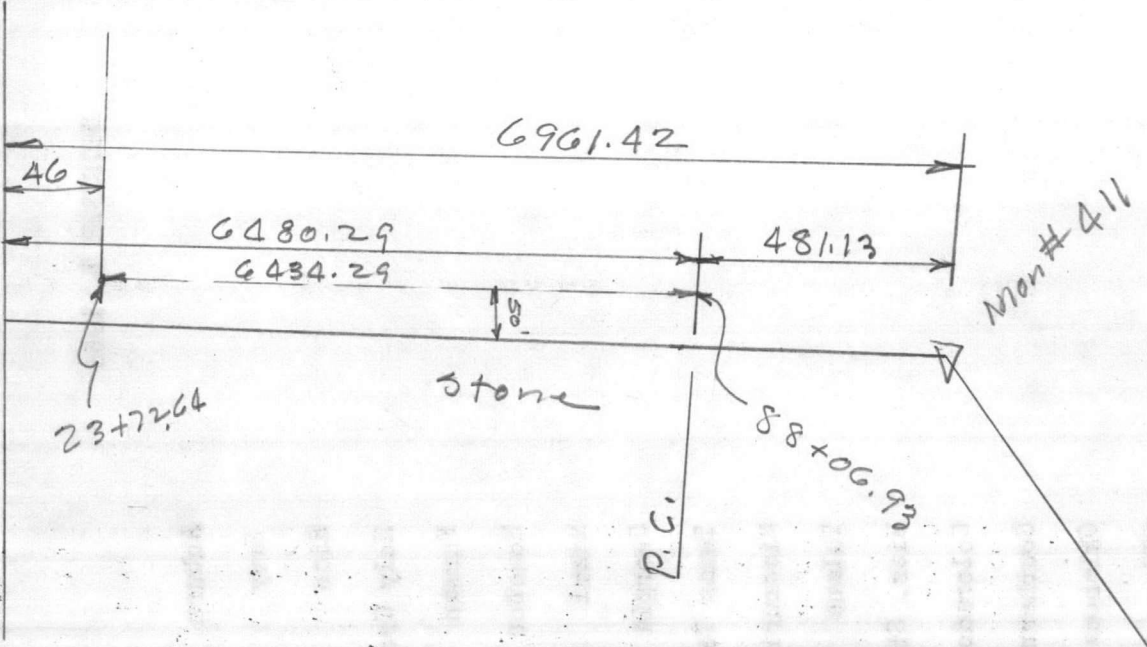
46

6434.29

2372.64

8806.93

106+76.80
97+96.74
880.06



DECEMBER 1, 1956

Alabama

Army

Baylor

Boston College

Clemson

Detroit

Florida

Georgia Tech

Hardin Simmons

Kansas

LSU

Mississippi

New Mexico

Notre Dame

Oklahoma

SMU

Tennessee

Auburn

Navy

Rice

Holy Cross

Furman

Houston

Miami

Georgia

Texas Tech

Missouri

Tulane

Miss. State

Colorado

Southern Cal.

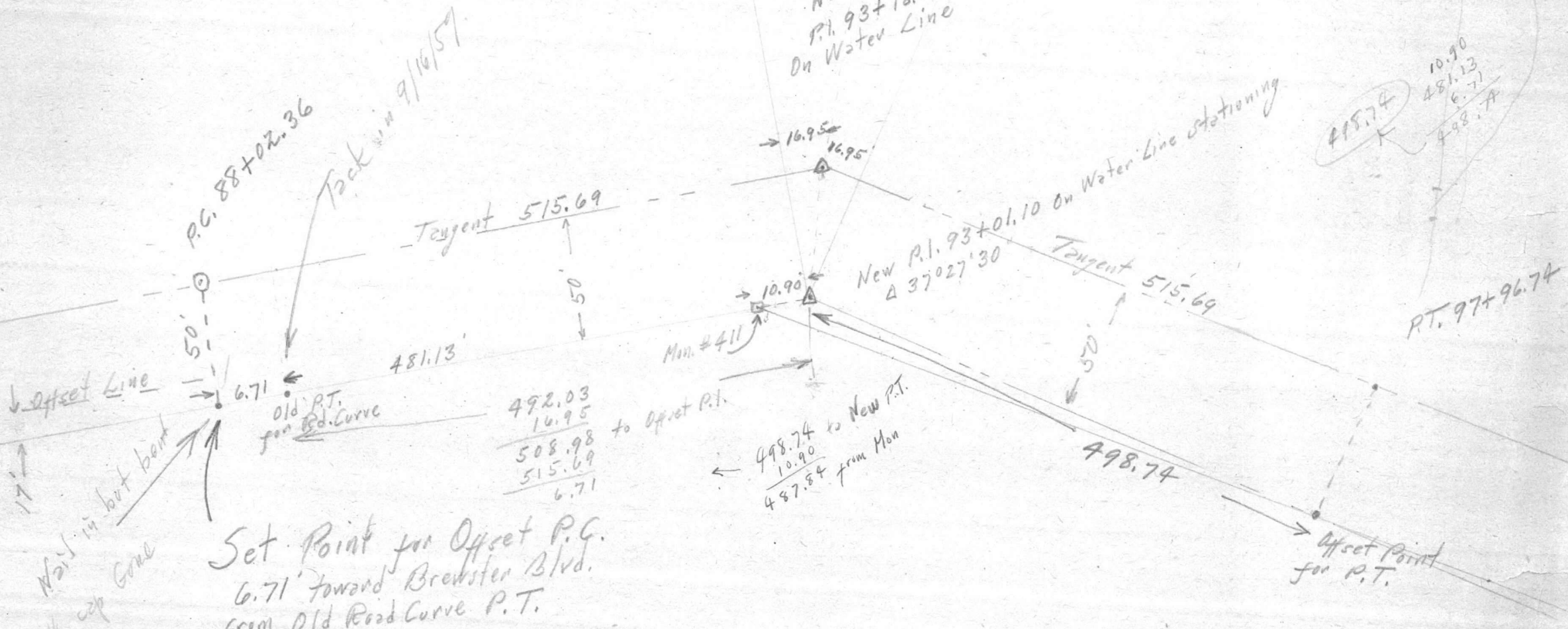
Oklahoma A&M

TCU

Vanderbilt

P.I. 93+18.05
 - 5 15.69
 P.C. 88+02.36
 Lc 9 94.38
 P.T. 97+96.74

117+87.51
 53+07.22
 64 80.29
 481.13
 6961.42



10.90
 481.13
 6.71
 498.74

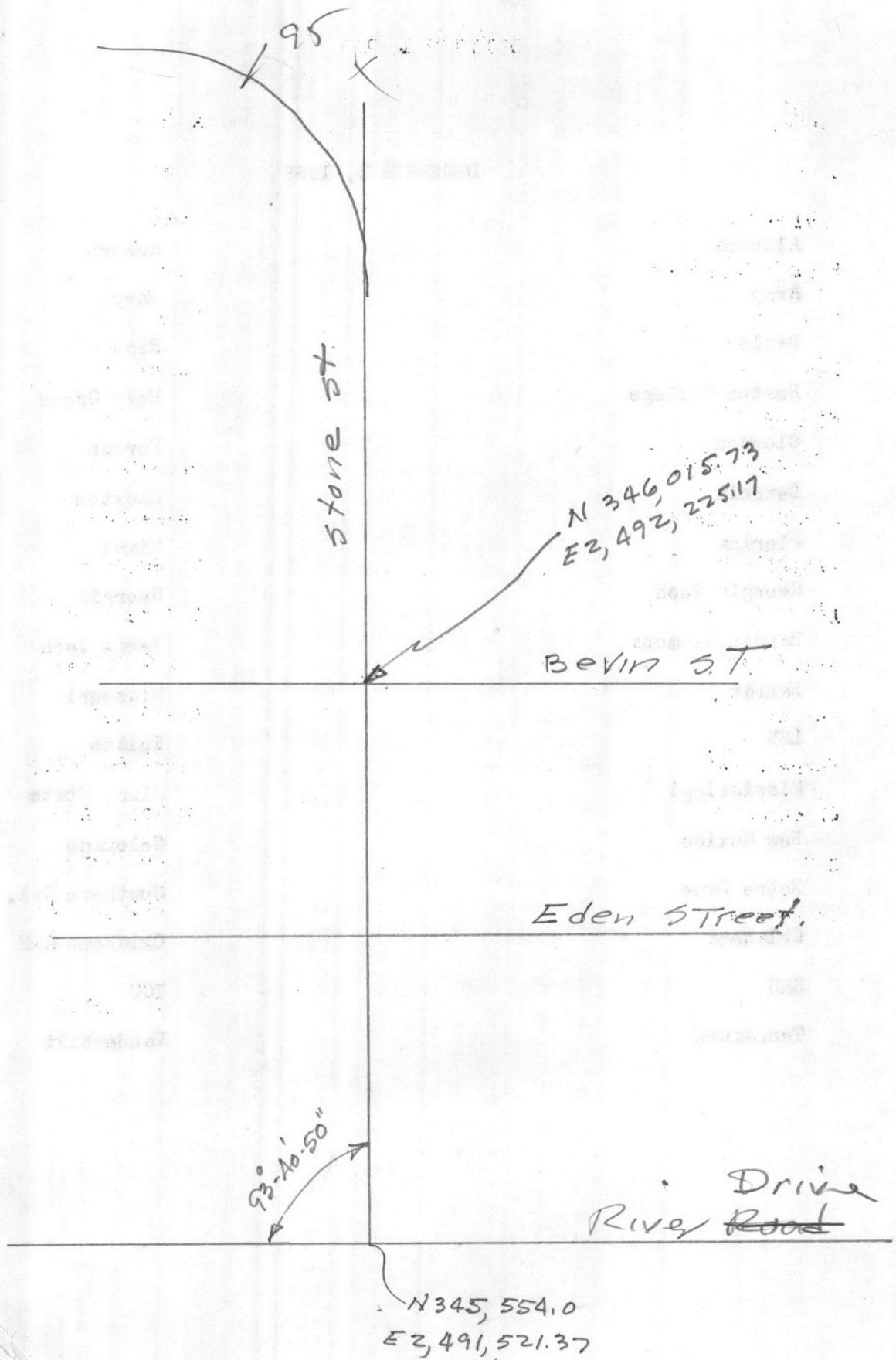
492.03
 16.95
 508.98
 515.69
 6.71

498.74 to New P.T.
 10.90
 487.84 from Mon

Set Point for Offset P.C.
 6.71' toward Brewster Blvd.
 from Old Road Curve P.T.

515.69
 16.95
 498.74





Stone St.

N 346,015.73
E 2,492,225.17

Bevin St.

Eden Street.

Drive
River Road

N 345,554.0
E 2,491,521.37

93°-40'-50"

DECEMBER 1, 1956

Alabama

Army

Baylor

Boston College

Clemson

Detroit

Florida

Georgia Tech

Hardin Simmons

Kansas

LSU

Mississippi

New Mexico

Notre Dame

Oklahoma

SMU

Tennessee

Auburn

Navy

Rice

Holy Cross

Furman

Houston

Miami

Georgia

Texas Tech

Missouri

Tulane

Miss. State

Colorado

Southern Cal.

Oklahoma A&M

TCU

Vanderbilt