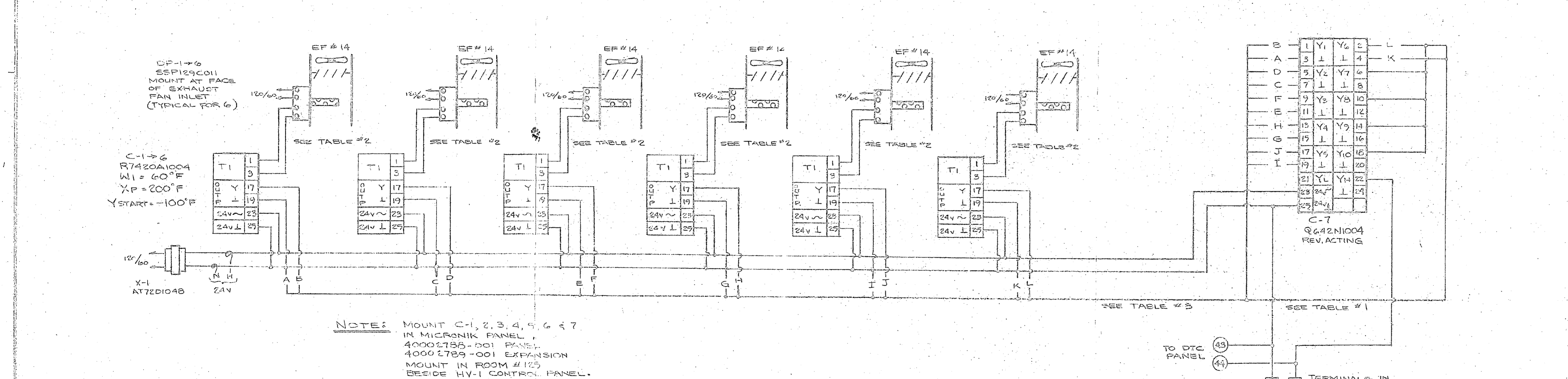


NOTICE: The HV-1 & EF-14 units will be started through a timer system. This system will run when the air temperature is above the set point. The system will stop when the air temperature falls below the set point. The system will restart when the air temperature rises above the set point. The system will stop when the air temperature falls below the set point. The system will restart when the air temperature rises above the set point. The system will stop when the air temperature falls below the set point. The system will restart when the air temperature rises above the set point.



NOTE: MOUNT C-1, 2, 3, 4, 5, 6 & 7 IN MICRONIK PANEL, 40002785-001 PANEL, 40002789-001 EXPANSION MOUNT IN ROOM #125 BESIDE HV-1 CONTROL PANEL.

TABLE #1

WIRING	FROM CONTROLLER	TYPE OF WIRE	DISTANCE LIMITATION IN FT. (M)
		14 AWG (.5 mm ²)	656 (200)
		16 AWG (.25 mm ²)	410 (125)
		18 AWG (.10 mm ²)	262 (80)
		20 AWG (.08 mm ²)	164 (50)

TABLE #2

WIRING R7420A	FROM CONTROLLER	TYPE OF WIRE	DISTANCE LIMITATION IN FT. (M)
		14 AWG (.5 mm ²)	656 (200)
		16 AWG (.25 mm ²)	410 (125)
		18 AWG (.10 mm ²)	262 (80)
		20 AWG (.08 mm ²)	164 (50)

TABLE #3

FROM Q642N TO:	TYPE OF WIRE	DISTANCE LIMITATION IN FT. (M)
ACTUATORS	14 AWG (.5 mm ²)	656 (200)
	16 AWG (.25 mm ²)	410 (125)
	18 AWG (.10 mm ²)	262 (80)
	20 AWG (.08 mm ²)	164 (50)
R7420 CONTROLLERS	18 AWG (.10 mm ²)	328 (100)
	20 AWG (.08 mm ²)	196 (60)

NOTE: THE E/P TRANSDUCER TERMINAL 24V L (0 VOLTS) MUST BE CONNECTED TO THE CONTROL TERMINAL 25.

LE BEND:

- = MOUNT IN DTC PANEL.
- ⊗ = MOUNT IN HV-1 CONTROL PANEL.
- ⊑ = TERMINAL IN HV-1 CONTROL PANEL.
- ⊚ = TERMINAL IN DTC PANEL.

N.H. = NOT BY HONEYWELL

THIS IS THE LATEST REVISION TO THIS DRAWING, DESTROY ALL PREVIOUS ISSUES. MAY 9 1983

SHAW-WALKER, INC.

517 S. SHARON AVENUE, CHARLOTTE, N.C. 28211

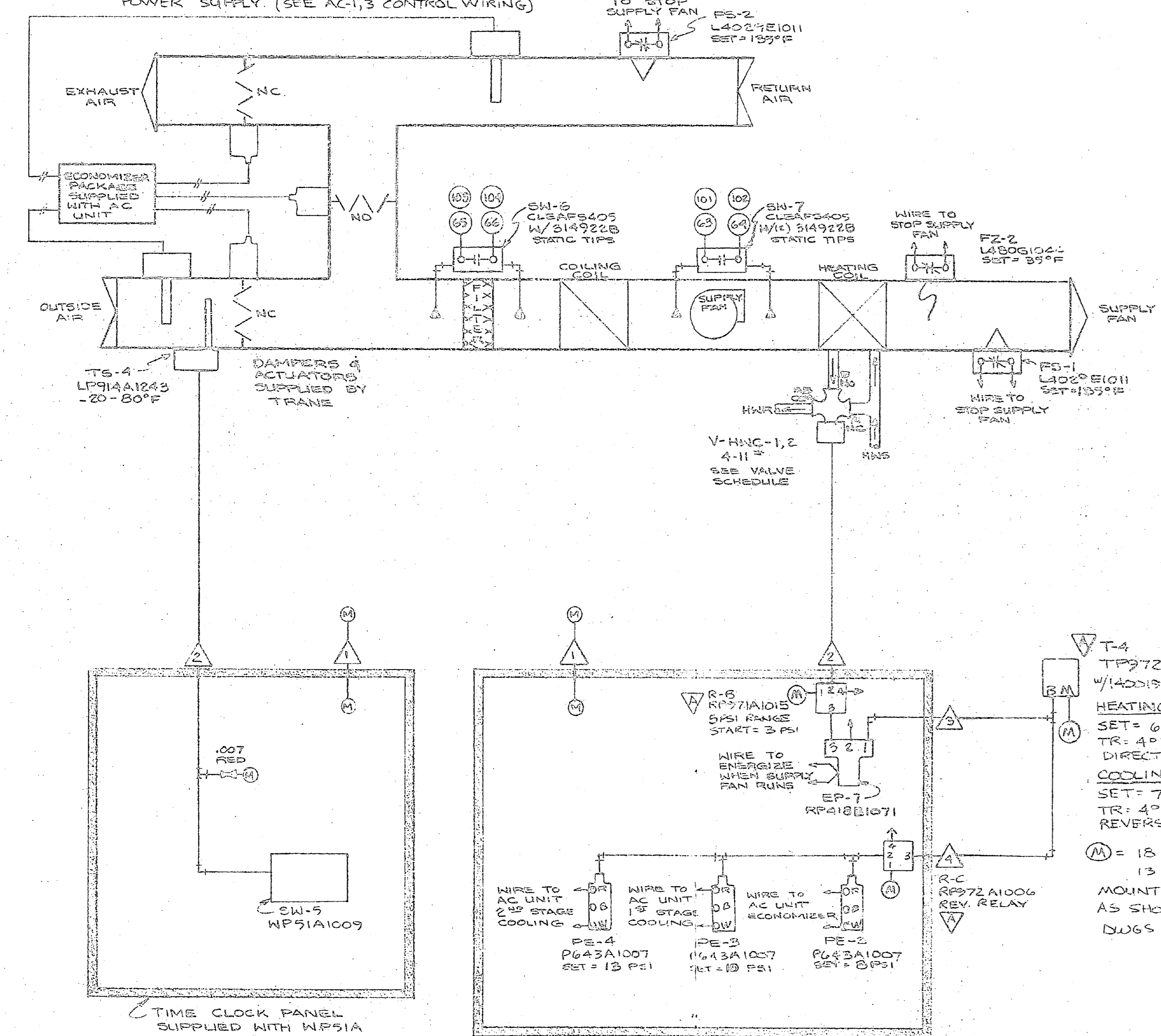
FIELD MAINTENANCE SHOP, MARINE CORPS AIR BASE, CAMP LEJEUNE, N.C.

3/18/83 CNG

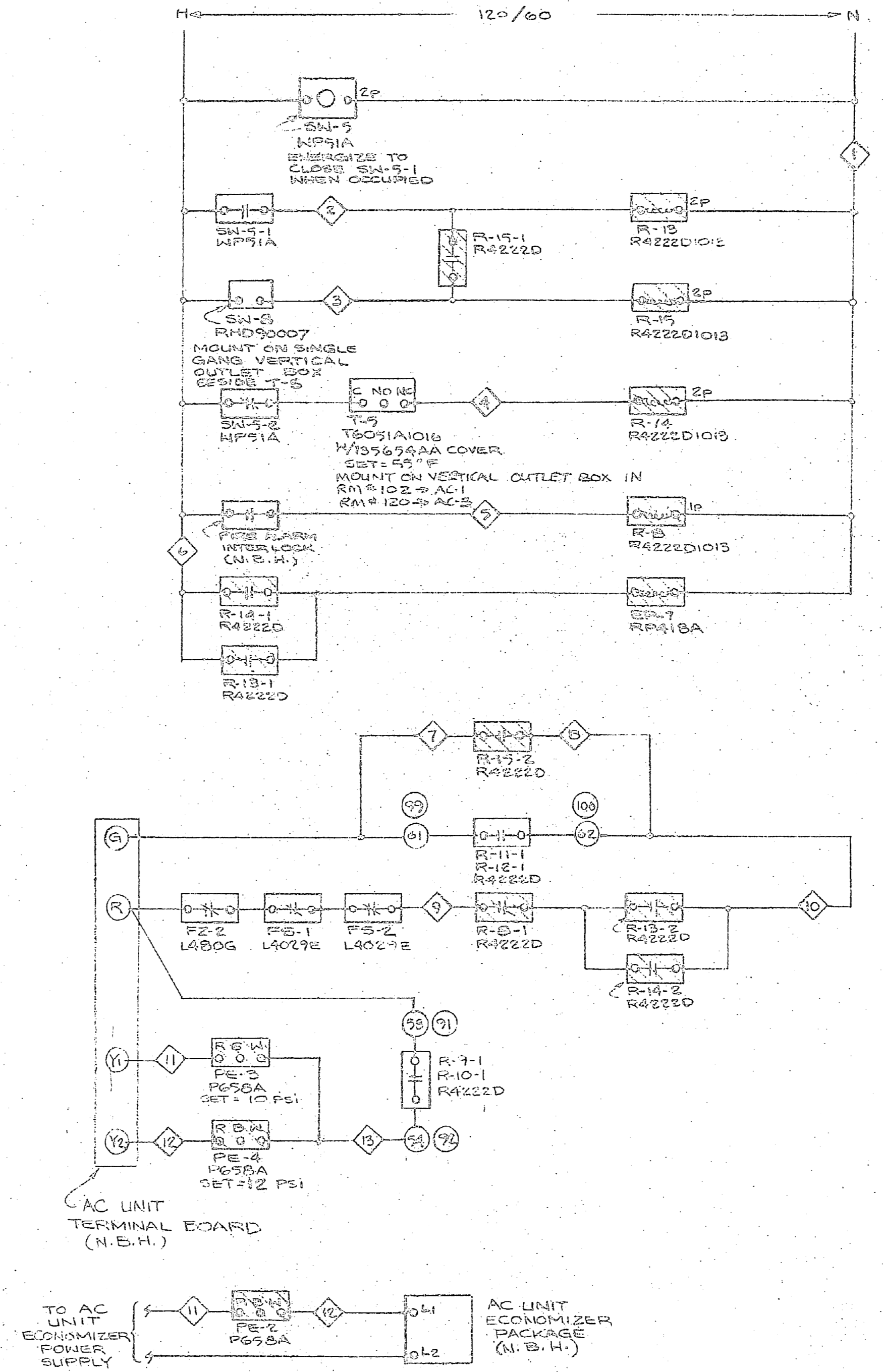
939-82616-1X1

DESIGNED BY: NAVAL FACILITIES ENGINEER: NAVAL FACILITIES CONTRACTOR: SNEEDEN, INC. APPLICATION ENGINEER: NELSON GATES

NOTE: ECONOMIZER PACKAGE IS SUPPLIED WITH AC UNIT AND REQUIRES NO FIELD INSTALLATION OR WIRING OTHER THAN INTERLOCKING WITH ECONOMIZER POWER SUPPLY (SEE AC-1,3 CONTROL WIRING)



AC-1,3 CONTROLS (TYPICAL FOR 2)



AC-1 & 3 CONTROL WIRING (TYPICAL FOR 2)

1. These control panels will control the economizer and shall be connected to the main control panel... (Detailed wiring instructions for the economizer control panels, including terminal identification and component specifications.)

- Legend:
 - ◊ = TERMINAL IN AC-1,3 CONTROL PANELS
 - = TERMINAL IN DTC PANEL
 - = MOUNT IN DTC PANEL
 - = MOUNT IN AC-1,3 CONTROL PANELS.
- N.E.H. = NOT BY HONEYWELL

THIS IS THE LATEST REVISION TO THIS DRAWING, DESTROY ALL PREVIOUS ISSUES.
MAY 9 1983

ARCHITECT: NAVAL FACILITIES
ENGINEER: NAVAL FACILITIES
CONTRACTOR: SNEYDEN, INC.
APPLICATION ENGINEER: NELSON GATES

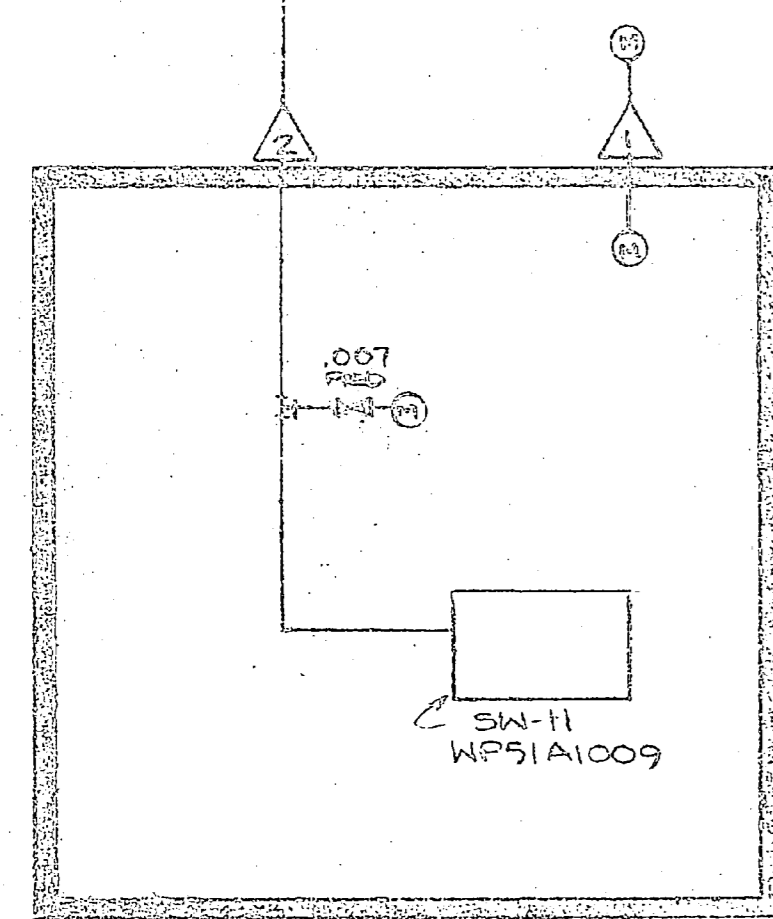
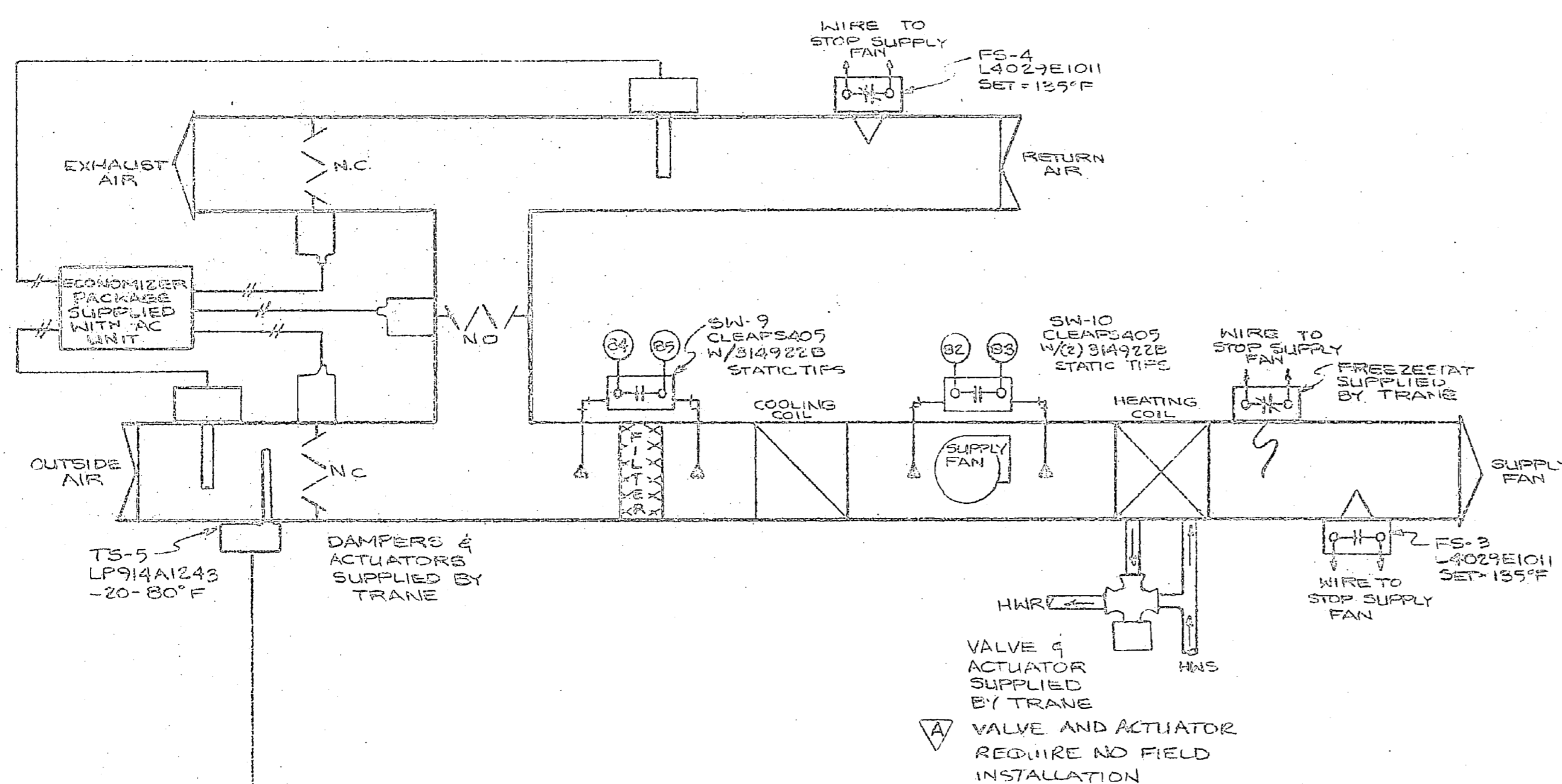
DATE	11-18-82	BY	DRS	NO.	1
REVISION	2	DATE	11-18-82	BY	DRS
DATE	11-18-82	BY	DRS	NO.	1

317 E. SHARON AVENUE, CHARLOTTE, N.C. 28211
FIELD MAINTENANCE SHOP
MARINE CORPS AIR BASE
MAIN SERVICE ROAD
CAMP LEJUNE, N.C.

939-82616-2X1

THIS IS THE FIRST READING
IN THE HISTORY OF THE
CITY OF NEW YORK

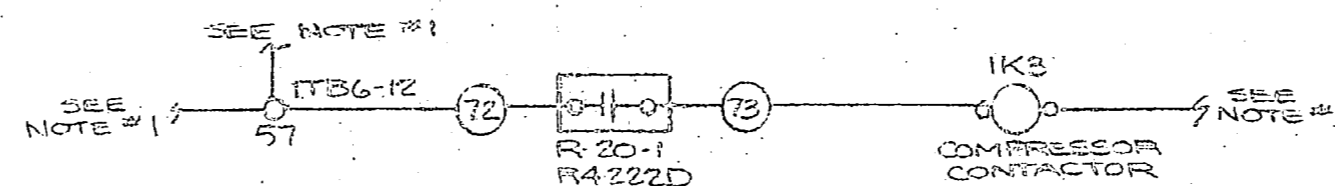
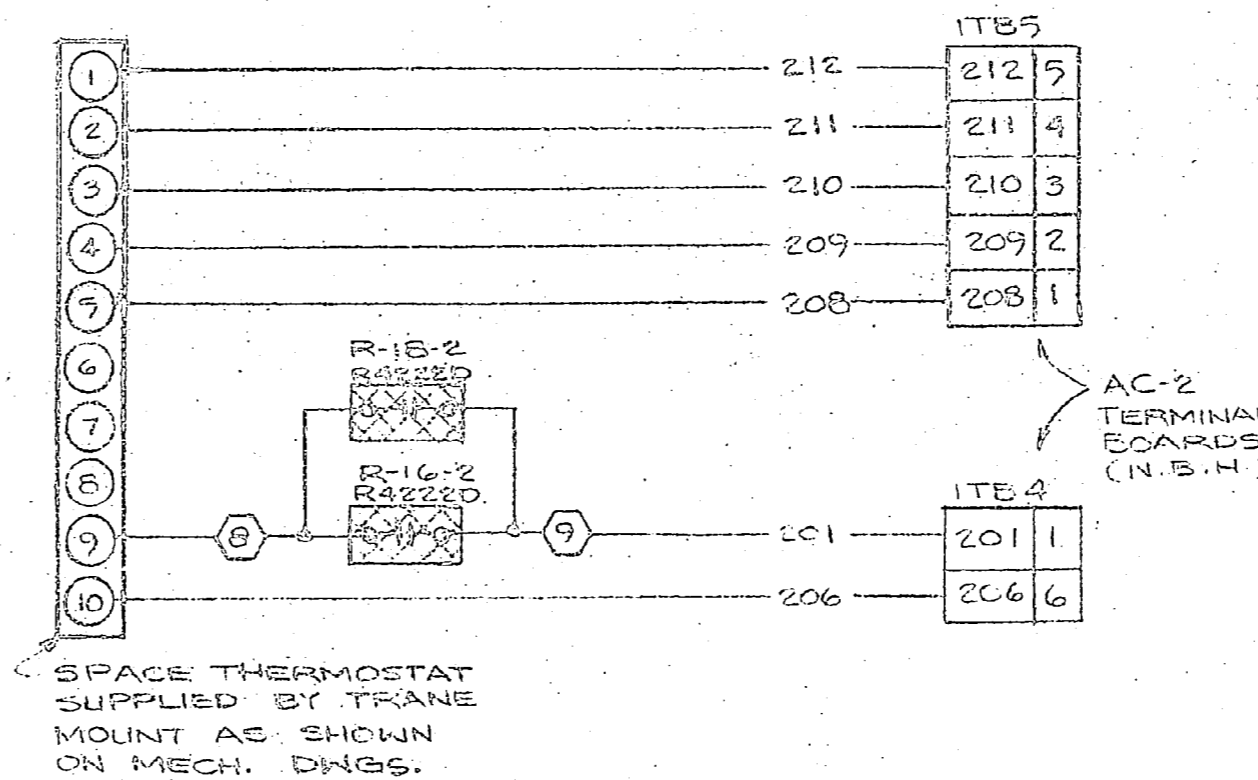
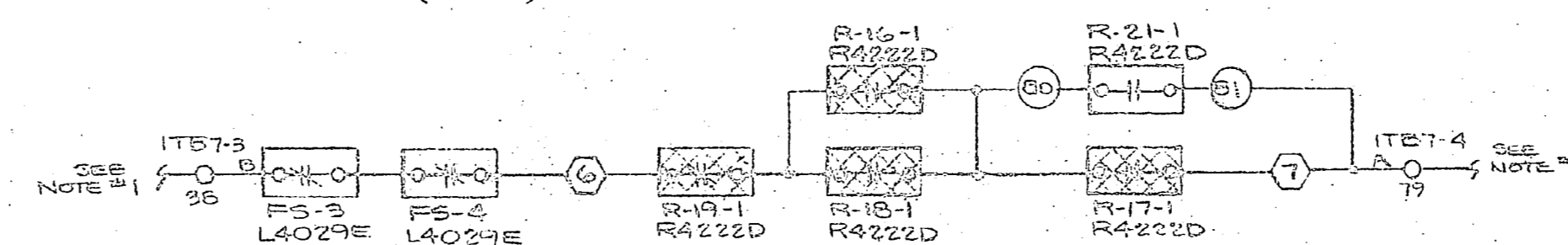
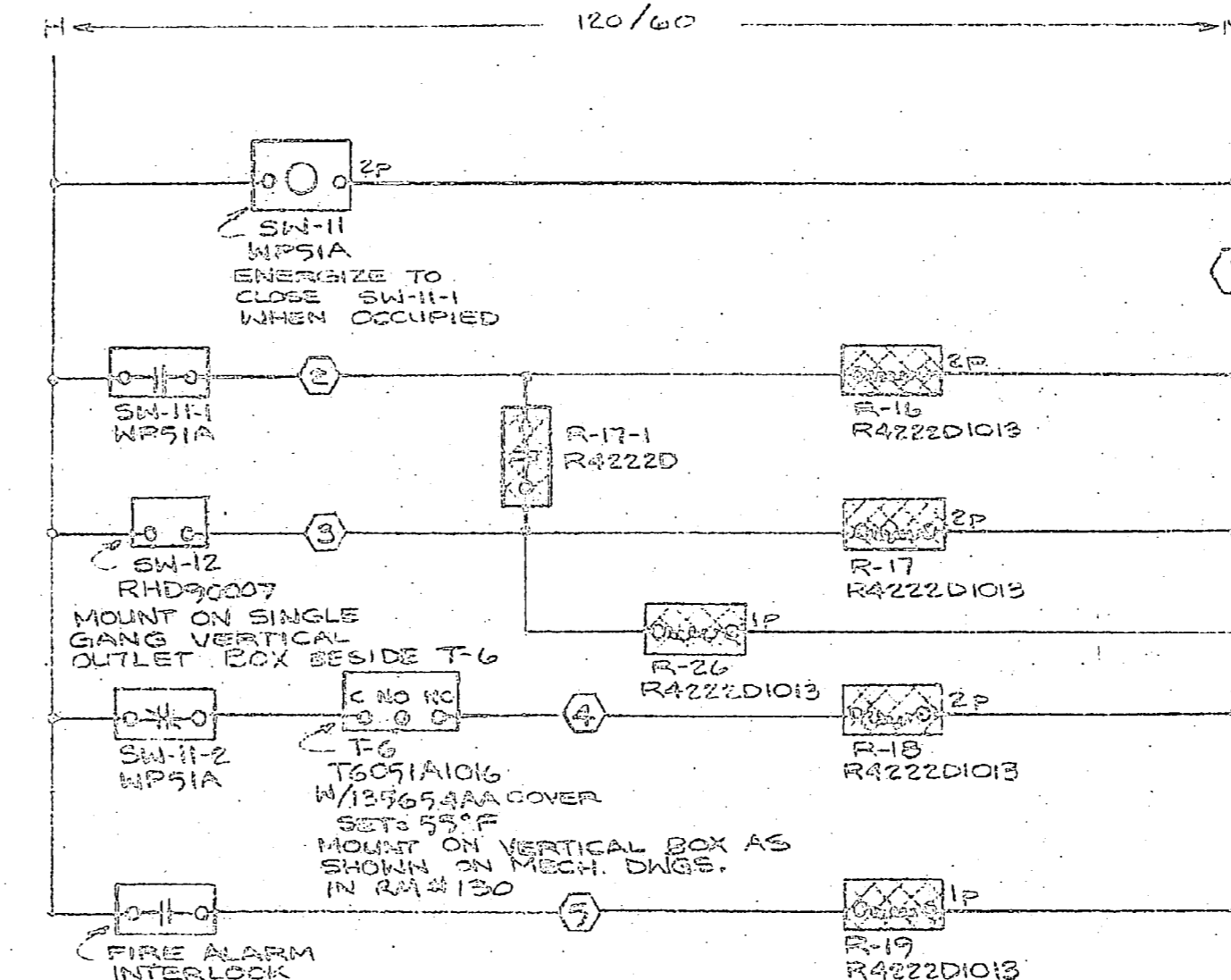
NOTE: REFRIGERATOR PACKAGE IS SUPPLIED WITH AC UNIT AND REQUIRES NO FIELD INSTALLATION.



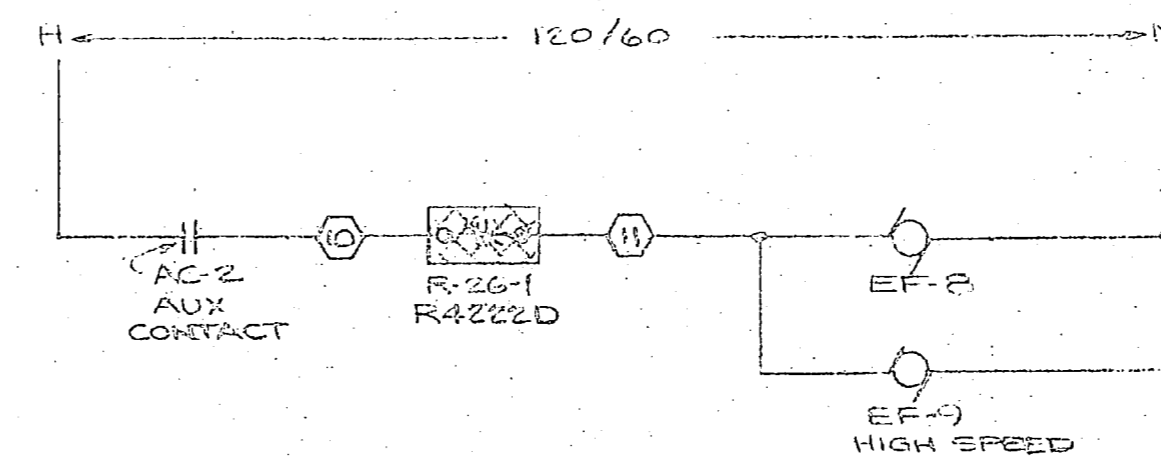
AC-2 CONTROL PANEL

- (1) 15752544-001 1/2 SIZE SUBPANEL
 - (1) 15752553-003 1/2 SIZE RING
 - (1) 15753440-001 1/2 SIZE DOOR
- MOUNT AC-2 PANEL IN RM. # 125

AC-2 CONTROLS
(TYPICAL FOR 1)



AC-2 CONTROL WIRING
(TYPICAL FOR 1)



EF-8 & 9 CONTROL WIRING
(TYPICAL FOR 1)

Section of Schematic for AC-2

See on previous sheet for details of the schematic and for the location of the components. The schematic shows the control wiring for the AC-2 unit. The unit is controlled by a thermostat (SW-11) and a fire alarm interlock (N.B.H.). The unit is also controlled by a compressor contactor (KCS). The unit is mounted in a control panel (AC-2) and is connected to a terminal board (ITB-5).

Section of Schematic for AC-2

See on previous sheet for details of the schematic and for the location of the components. The schematic shows the control wiring for the AC-2 unit. The unit is controlled by a thermostat (SW-11) and a fire alarm interlock (N.B.H.). The unit is also controlled by a compressor contactor (KCS). The unit is mounted in a control panel (AC-2) and is connected to a terminal board (ITB-5).

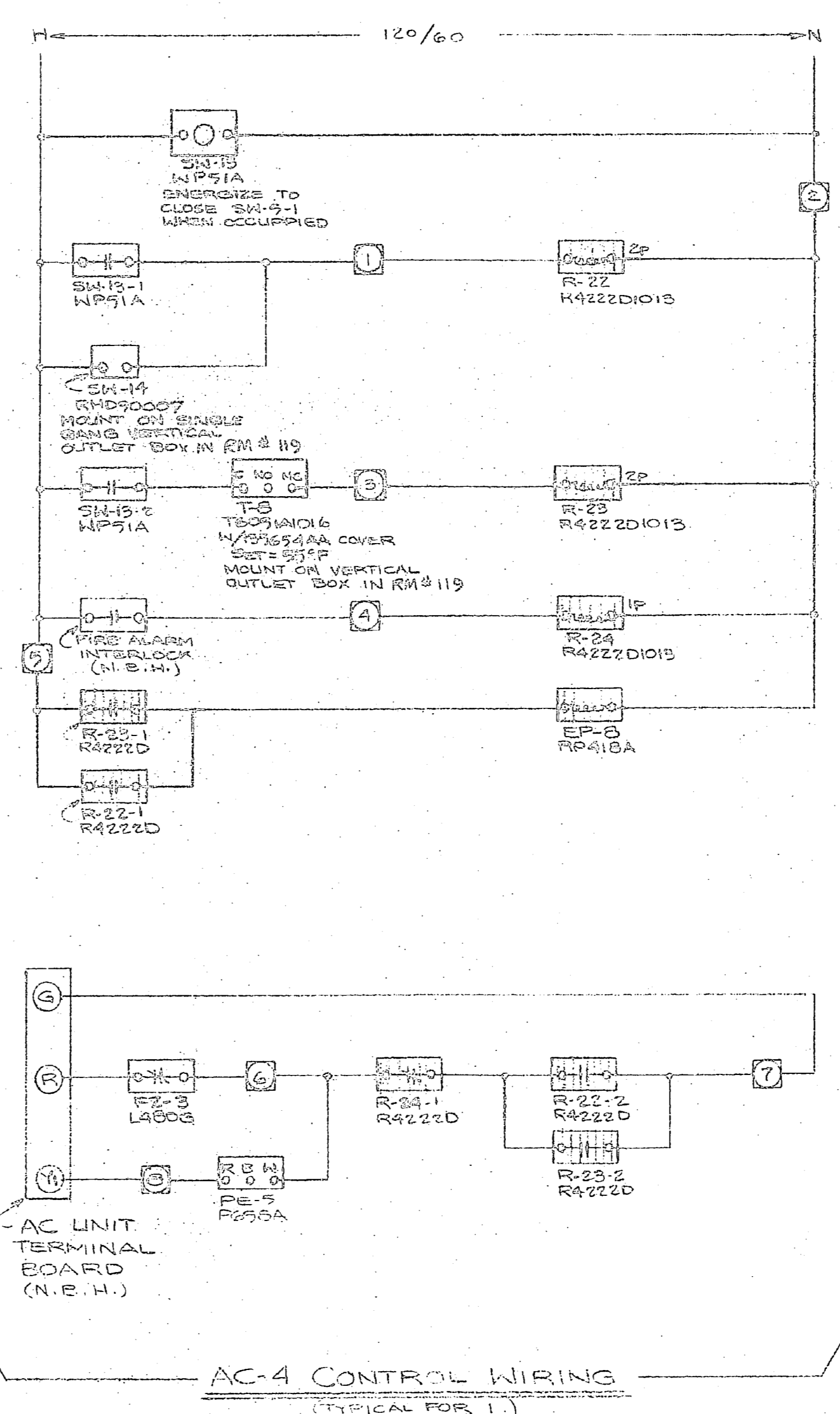
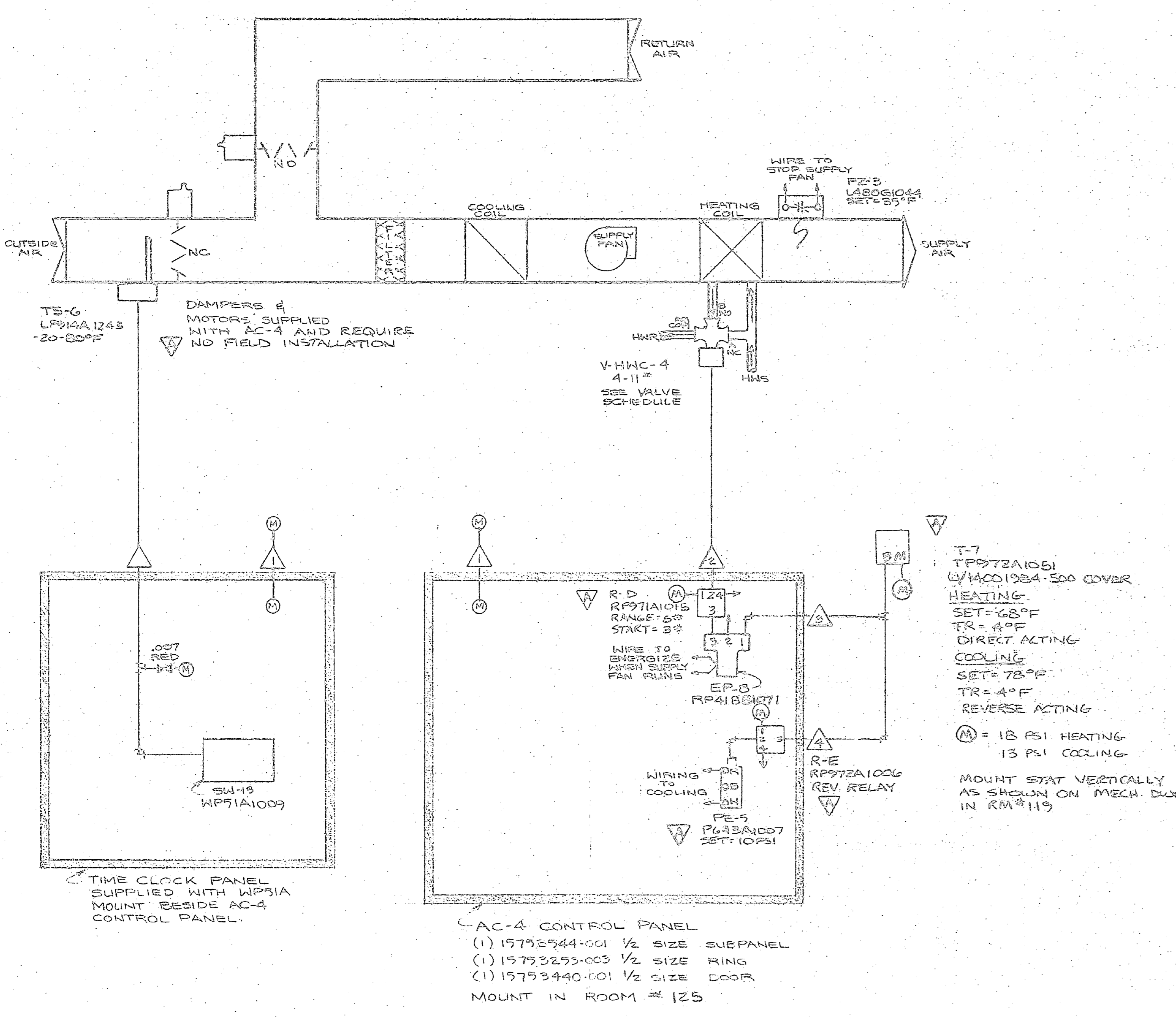
- LEGEND:**
- (1) = TERMINAL IN AC-2 CONTROL PANEL
 - (2) = TERMINAL IN DTC PANEL
 - (3) = MOUNT IN DTC PANEL
 - (4) = MOUNT IN AC-2 CONTROL PANEL
- N.B.H. = NOT BY HONEYWELL

NOTE #1: FOR CONTINUATION SEE TRANE WIRING DIAGRAM FOR AC MODEL # SLHC-254.

**THIS IS THE LATEST REVISION
TO THIS DRAWING. DESTROY ALL
PREVIOUS ISSUES. MAY, 9 1983**

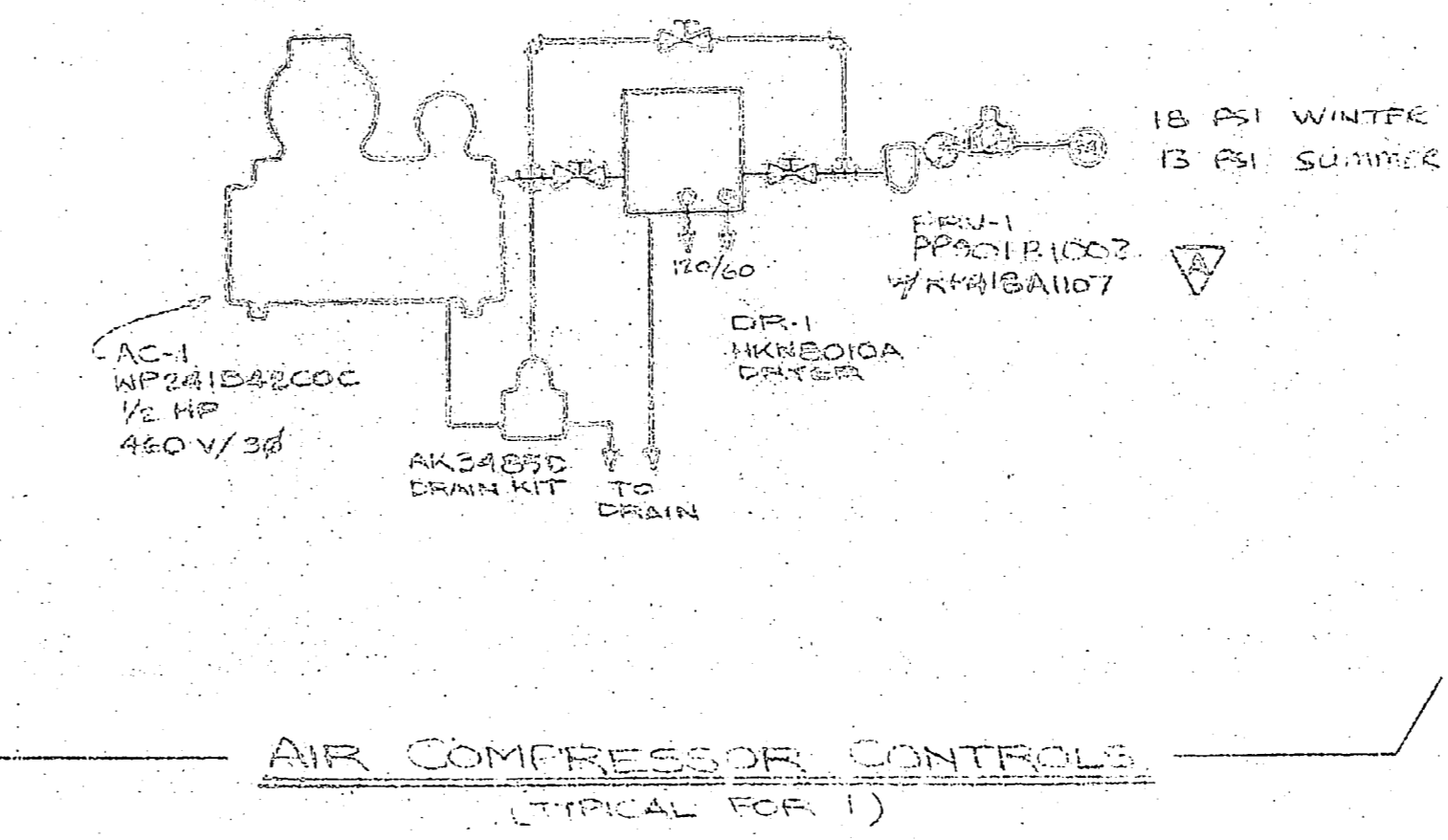
ARCHITECT: NAVAL FACILITIES
ENGINEER: NAVAL FACILITIES
CONTRACTOR: CNEEDEN, INC
APPLICATION ENGINEER: NELSON GATES

HONEYWELL, INC.		5175 SHARON AMITY RD., CHARLOTTE, N.C. 28211	
FIELD MAINTENANCE SHOP		MARINE CORPS AIR BASE	
MARINE SERVICE ROAD		CAMP LEJUNEAU, N.C.	
Supervised By	Approved By	Date	Rev.
		11-18-82	
		Sheet 3 of 6	
		DRAWING NUMBER	929-82616-3XT

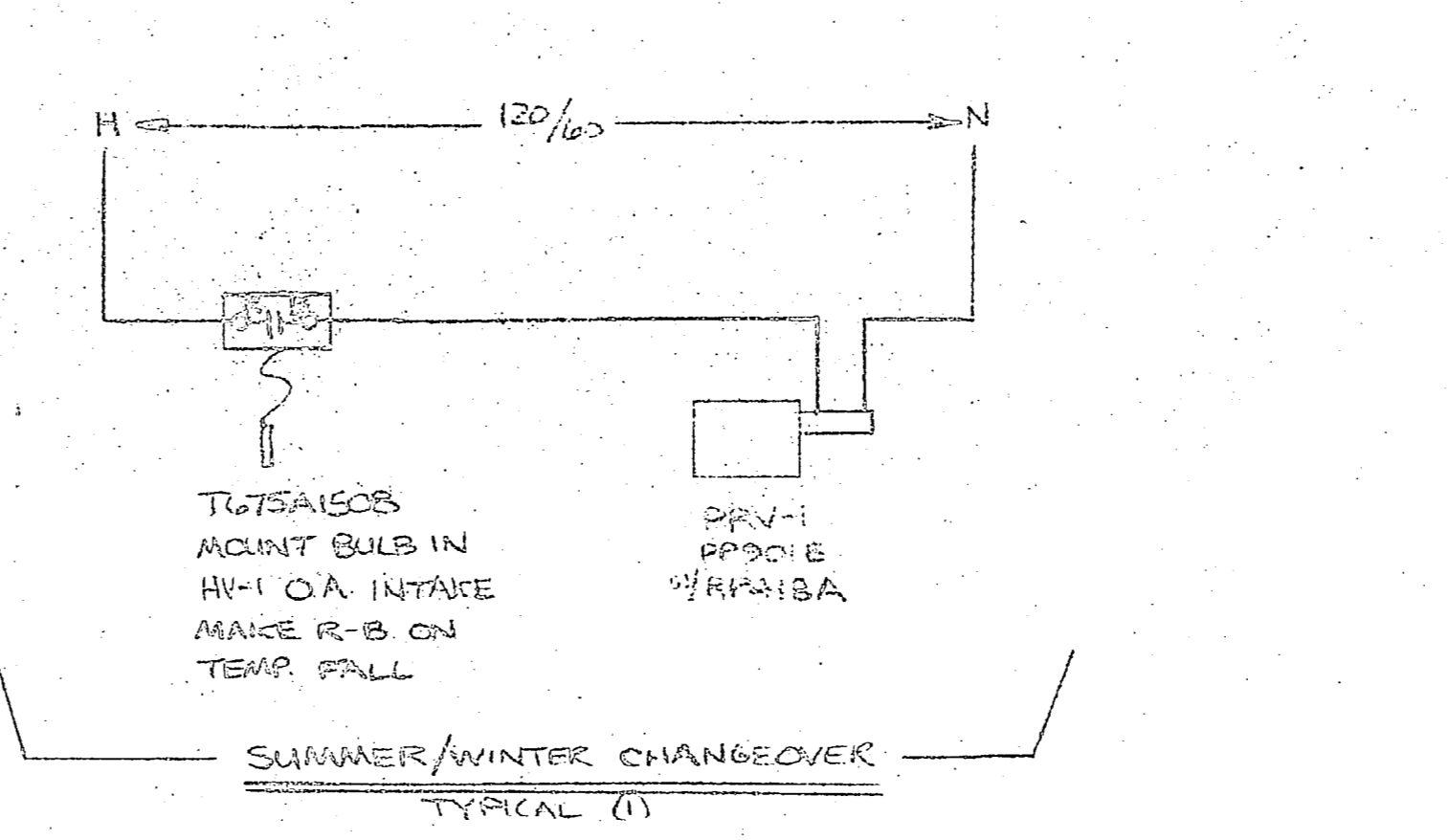


Special Note: This drawing is for the use of the contractor and is not to be used for any other purpose. The contractor is responsible for the correct installation and operation of the equipment. The contractor shall be responsible for the correct installation and operation of the equipment. The contractor shall be responsible for the correct installation and operation of the equipment.

AC UNIT #	VALVE ID #	VALVE PART #	SIZE	CV	MOTOR PART #	RANGE	ACTION
AC-1	V-H K-1	V5013A1047	1/4" NPT	16 CV	MP953C1026	4-11	DA
AC-2	V-H K-2	BY TRANE	BY TRANE	BY TRANE	BY TRANE	BY TRANE	BY TRANE
AC-3	V-H G-3	V5013A1033	1" NPT	10 CV	MP953C1026	4-11	DA
AC-4	V-H K-4	V5013A1005	1/2" NPT	29 CV	MP953C1026	4-11	DA
HE-1	V-H E-1	V5011C1391	2" NPT	40 CV	MP953F1101	8-12	SA
HV-1	V-H V-1	V5011C1458	2 1/2" NPT	63 CV	MP953C1075	8-12	DA



LEGEND:
 () = TERMINAL IN AC-4 CONTROL PANEL
 [] = MOUNT IN AC-1 CONTROL PANEL
 N.E.H. = NOT BY HONEYWELL

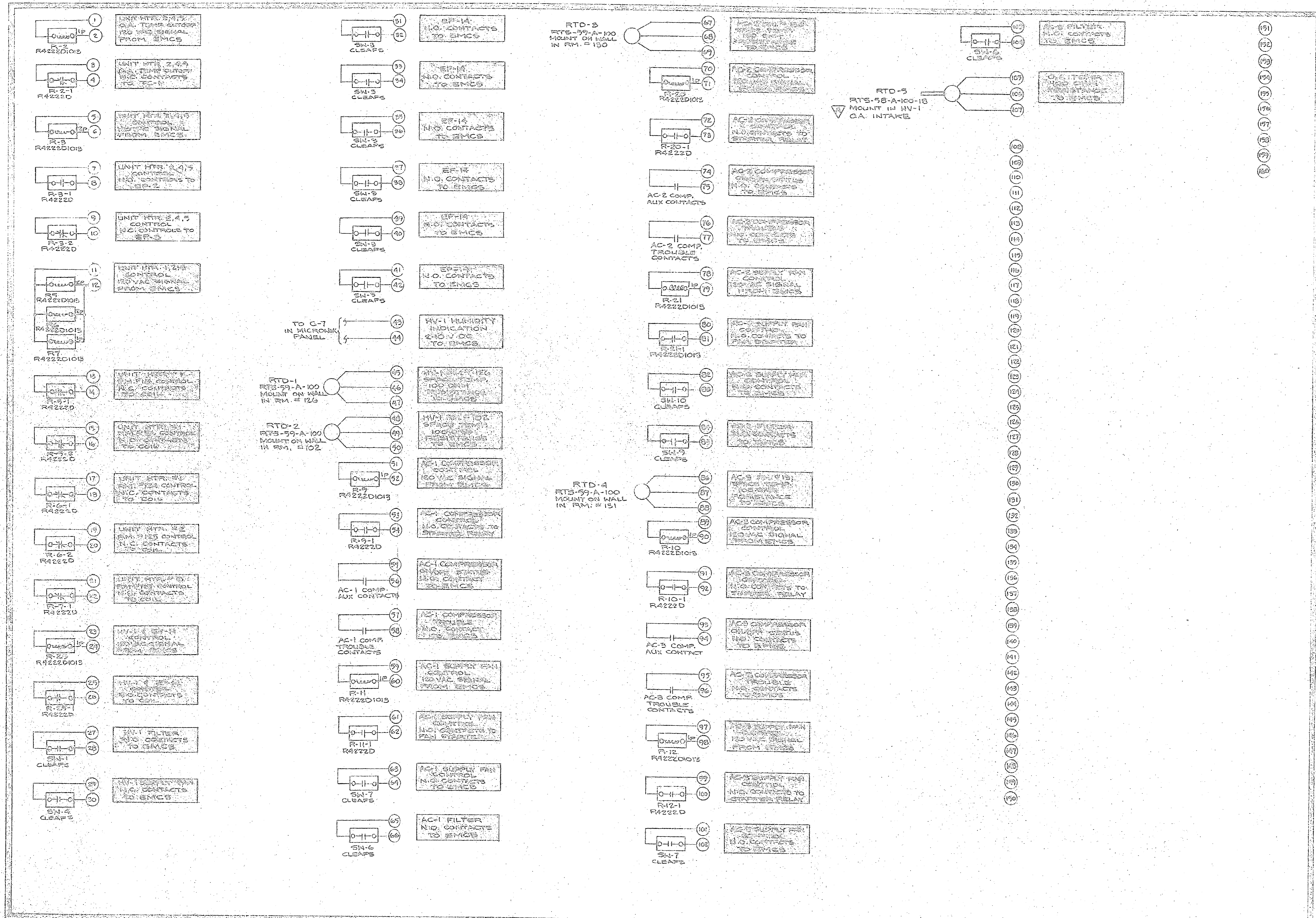


THIS IS THE LATEST REVISION TO THIS DRAWING, DESTROY ALL PREVIOUS ISSUES.

ARCHITECT: NAVAL FACILITIES
 ENGINEER: NAVAL FACILITIES
 CONTRACTOR: SNEEDEN, INC.
 APPLICATION ENGINEER: NELSON GATES

HONEYWELL, INC.		197 S. CHARLTON AVENUE RD., CHARLOTTE, N.C. 28211	
FIELD MAINTENANCE SHOP		MARINE CORPS AIR BASE	
CAMP LEJEUNE, N.C.		MAIN SERVICE ROAD	
Supervisor	Drawn By	Date	Scale
Approved By	Checked By	Drawn By	Scale

RESEARCH REPORT OF THE
LA VENTURA DIVISION OF
THE CALIFORNIA GEOLOGICAL SURVEY



LEGEND:
 (C) = TERMINAL IN DTC PANEL
 (M) = MOUNT IN DTC PANEL

DTC CONTROL PANEL
 (1) 1575244-003 FULL SIZE SUBPANEL
 (1) 1575253-004 FULL SIZE RING
 (1) 1575240-002 FULL SIZE DOOR
 (1) 1575244-001 1/2 SIZE SUBPANEL
 (1) 1575253-003 1/2 SIZE RING
 (1) 1575240-001 1/2 SIZE DOOR

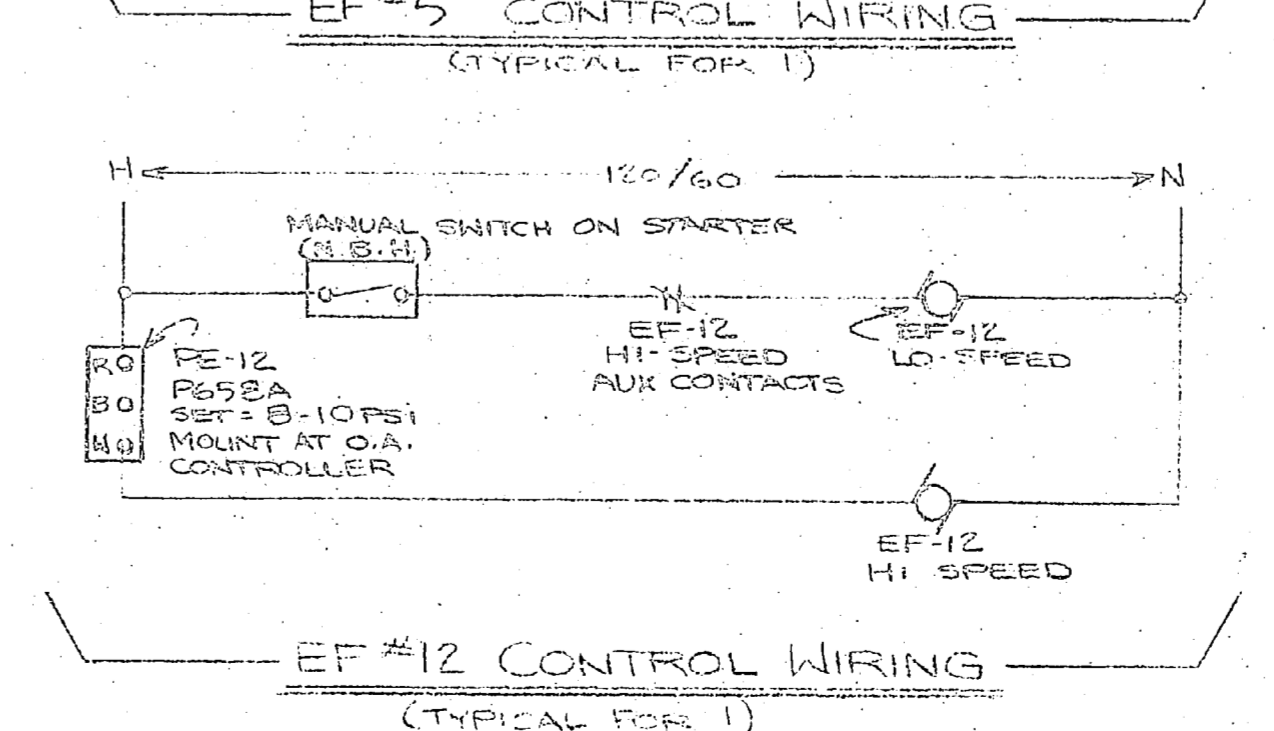
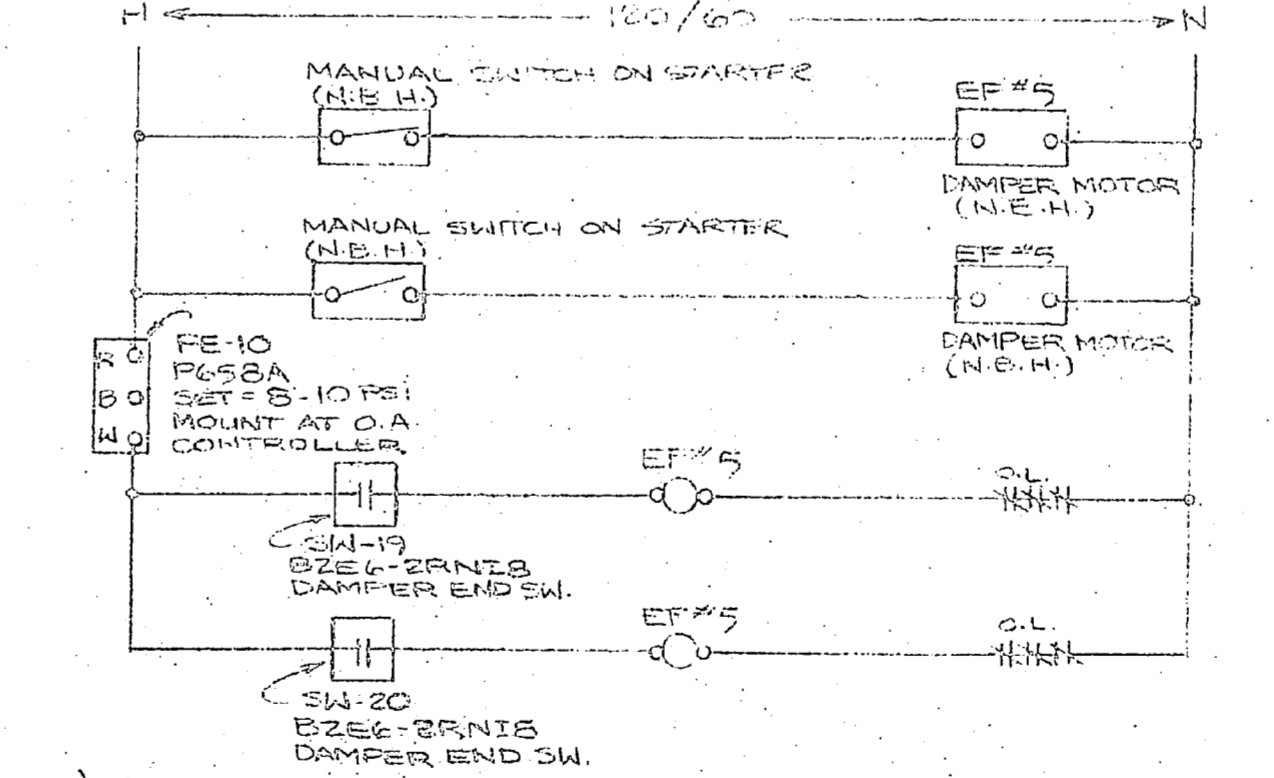
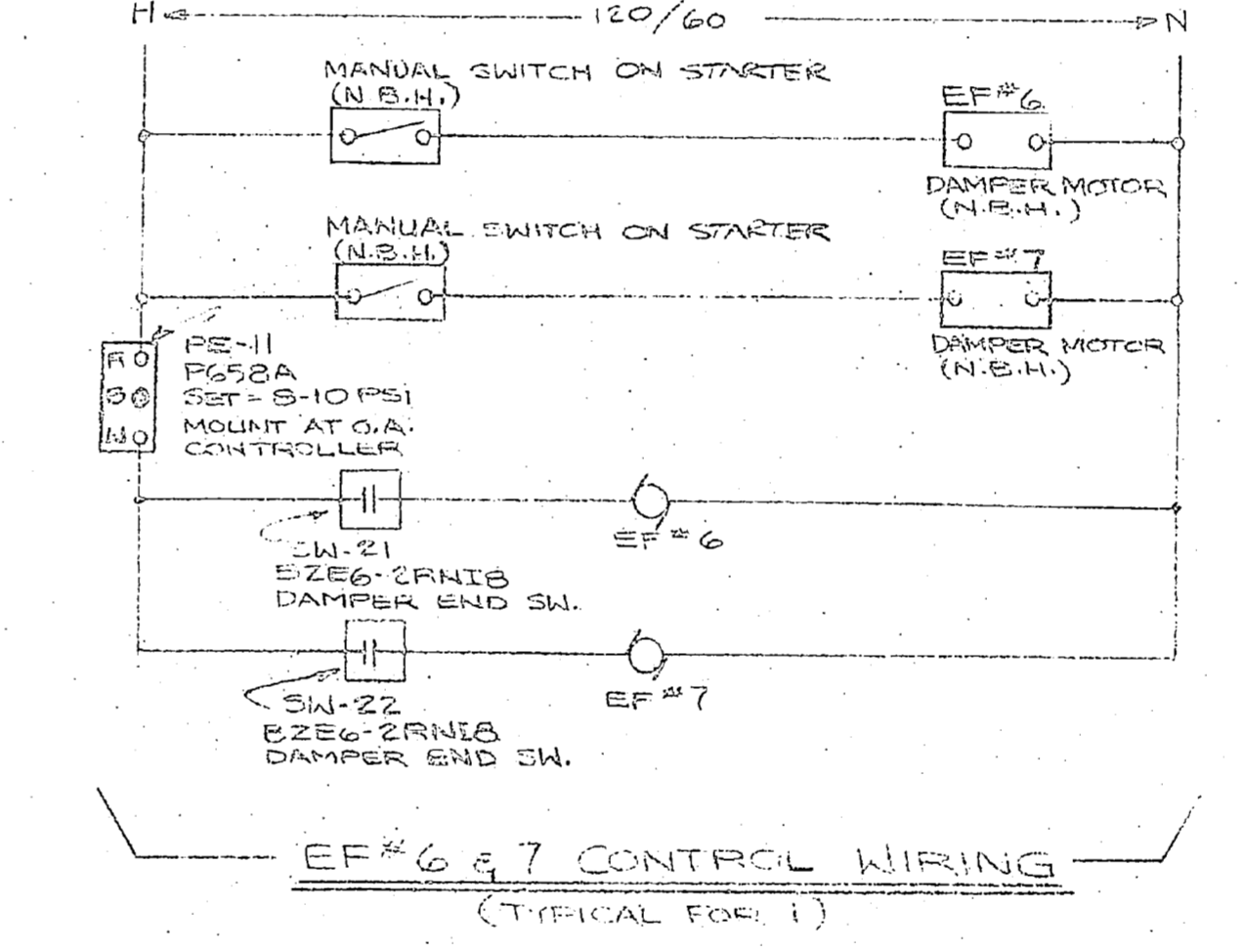
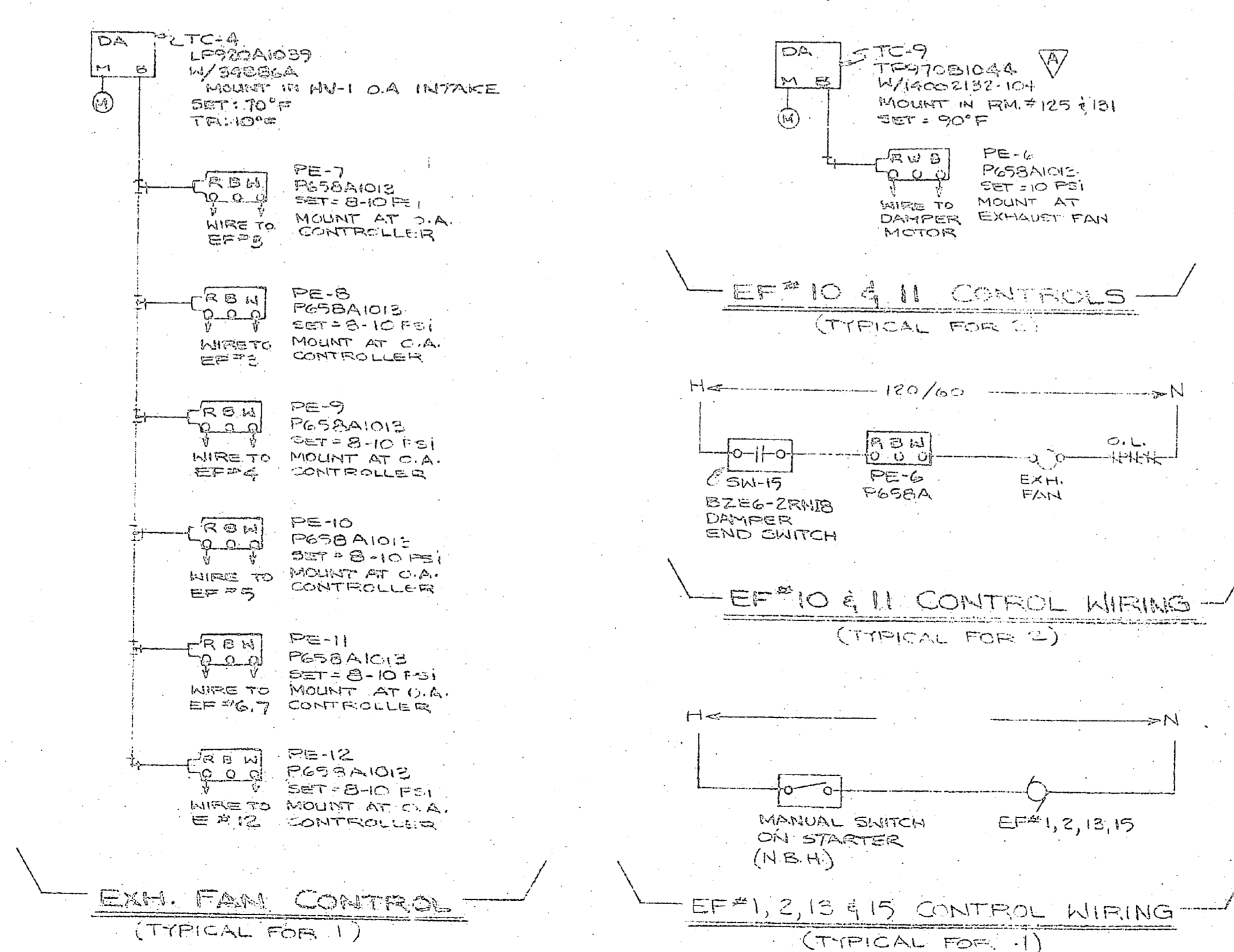
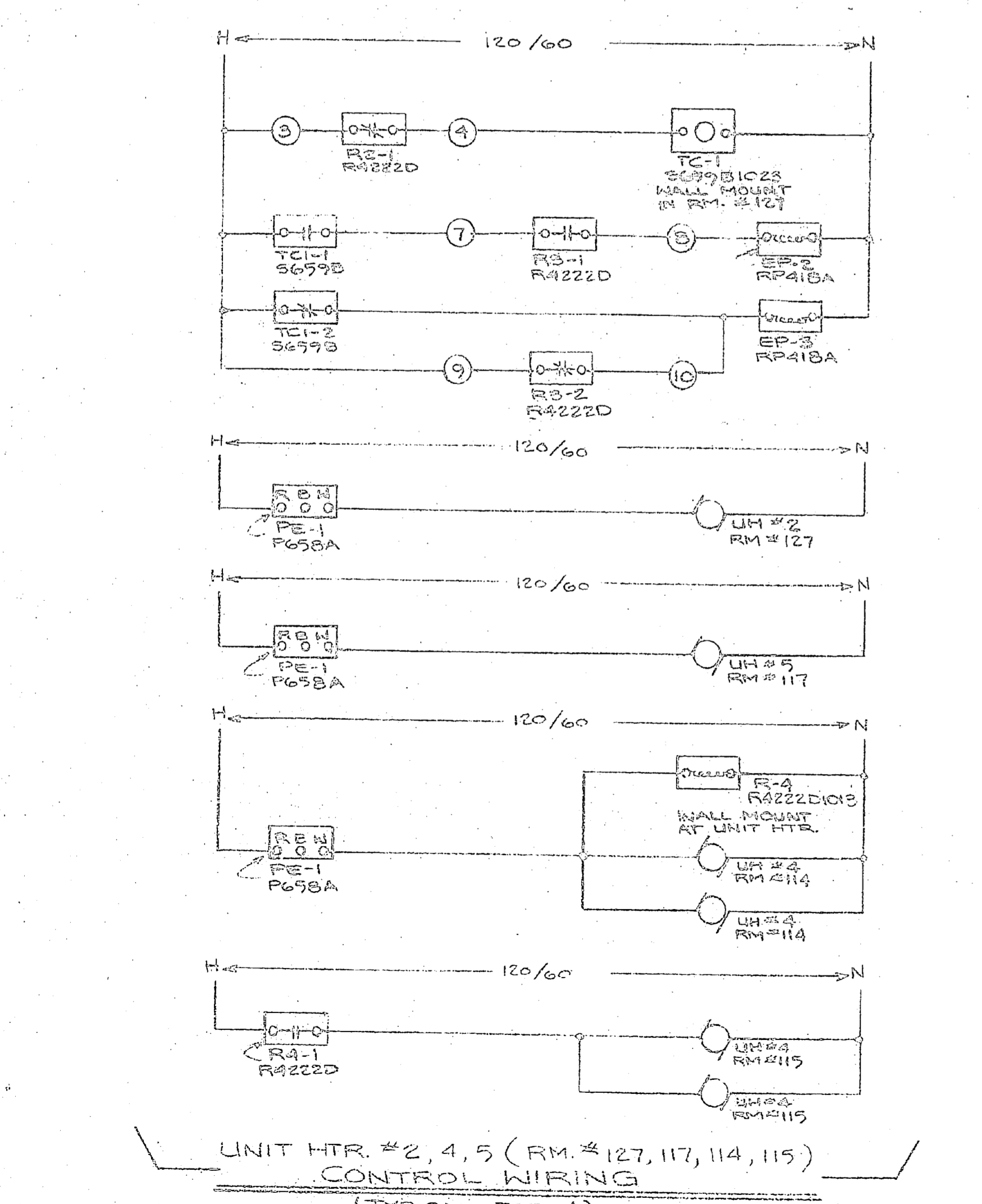
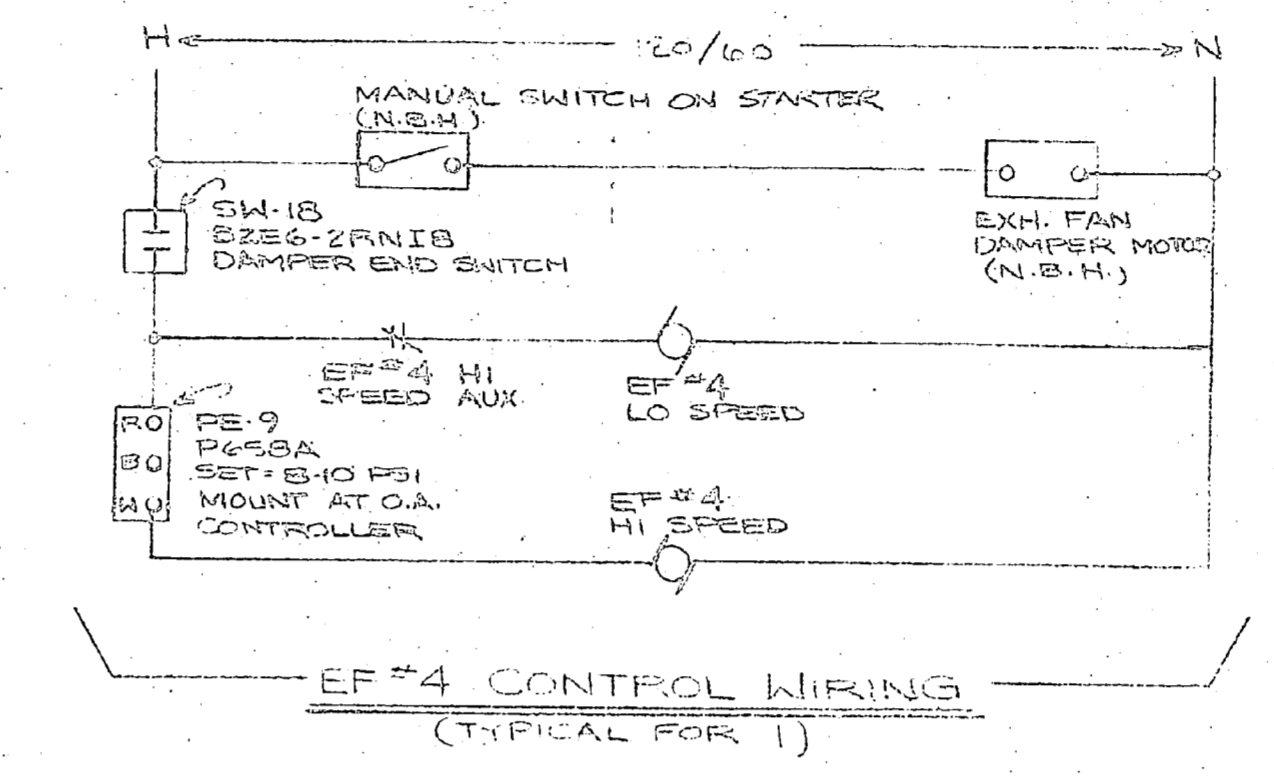
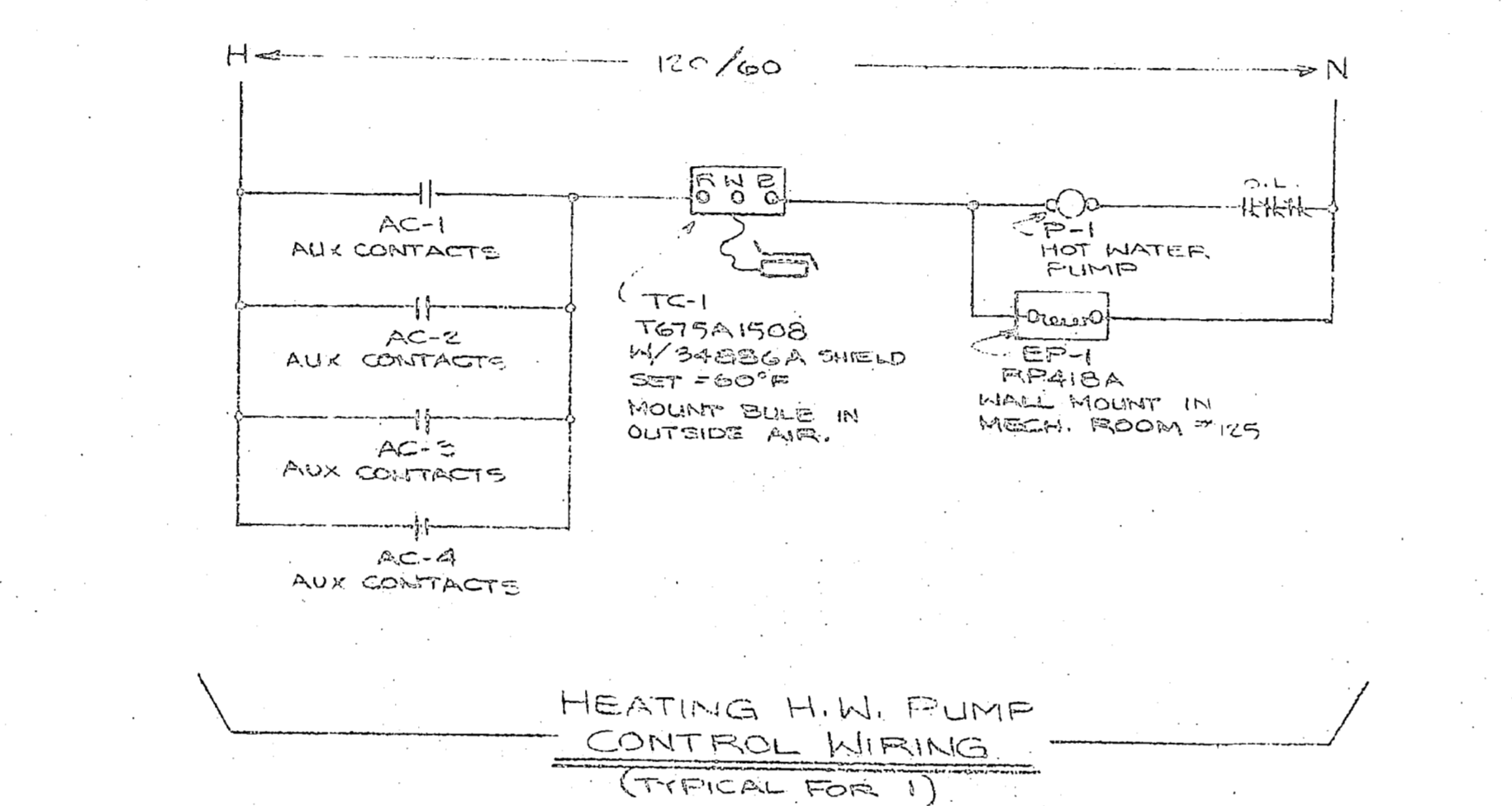
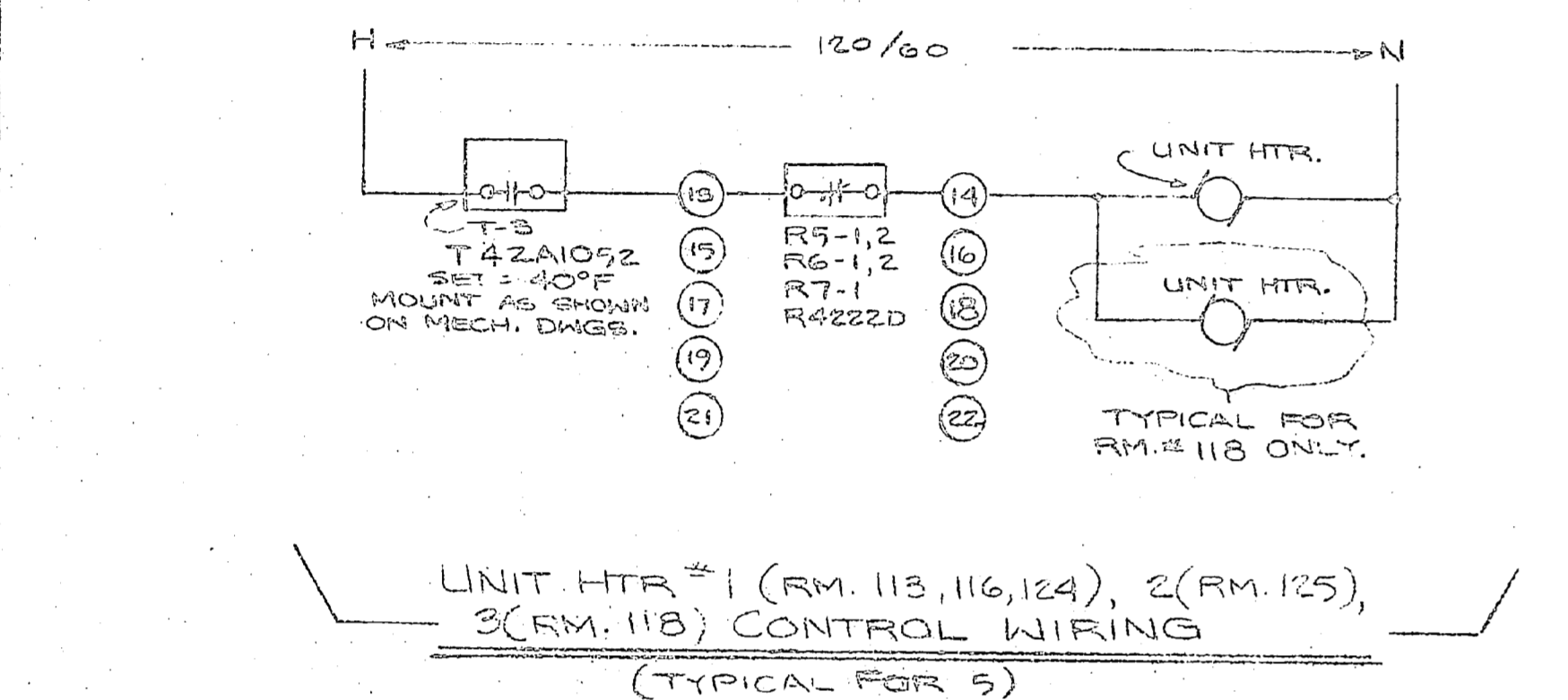
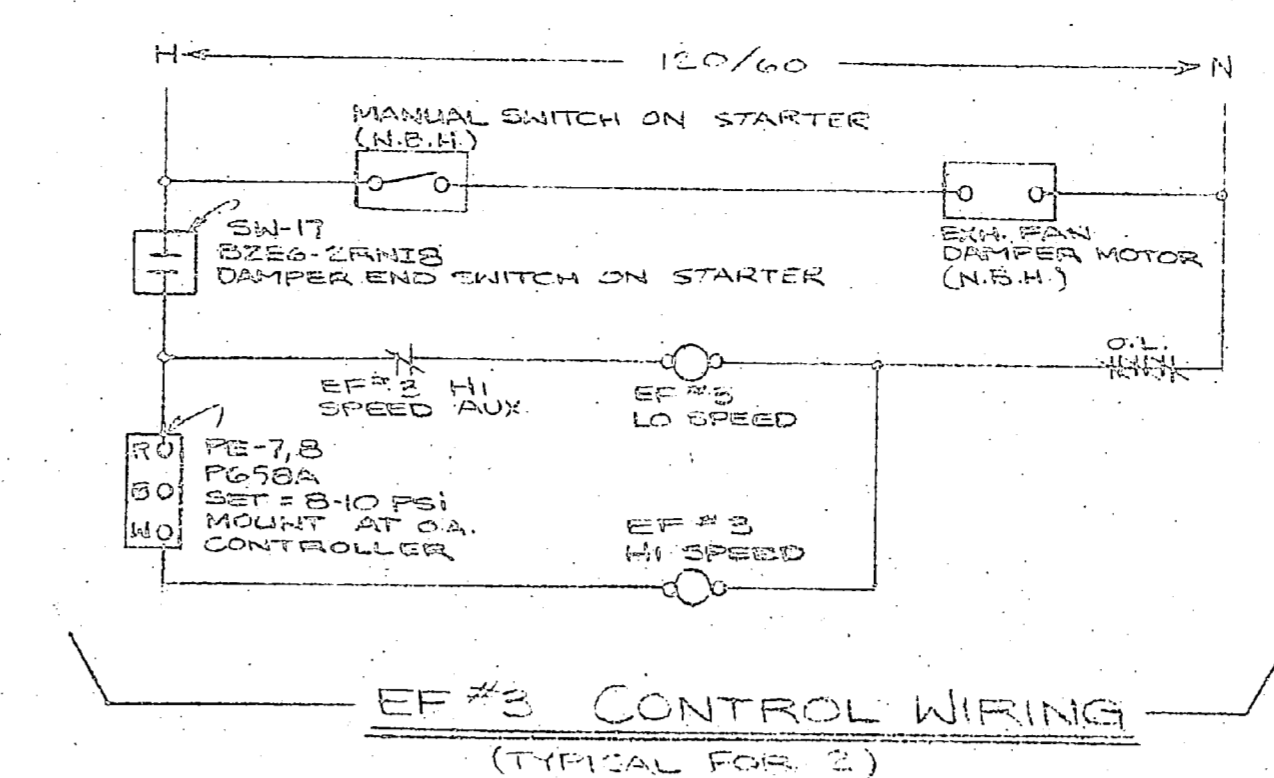
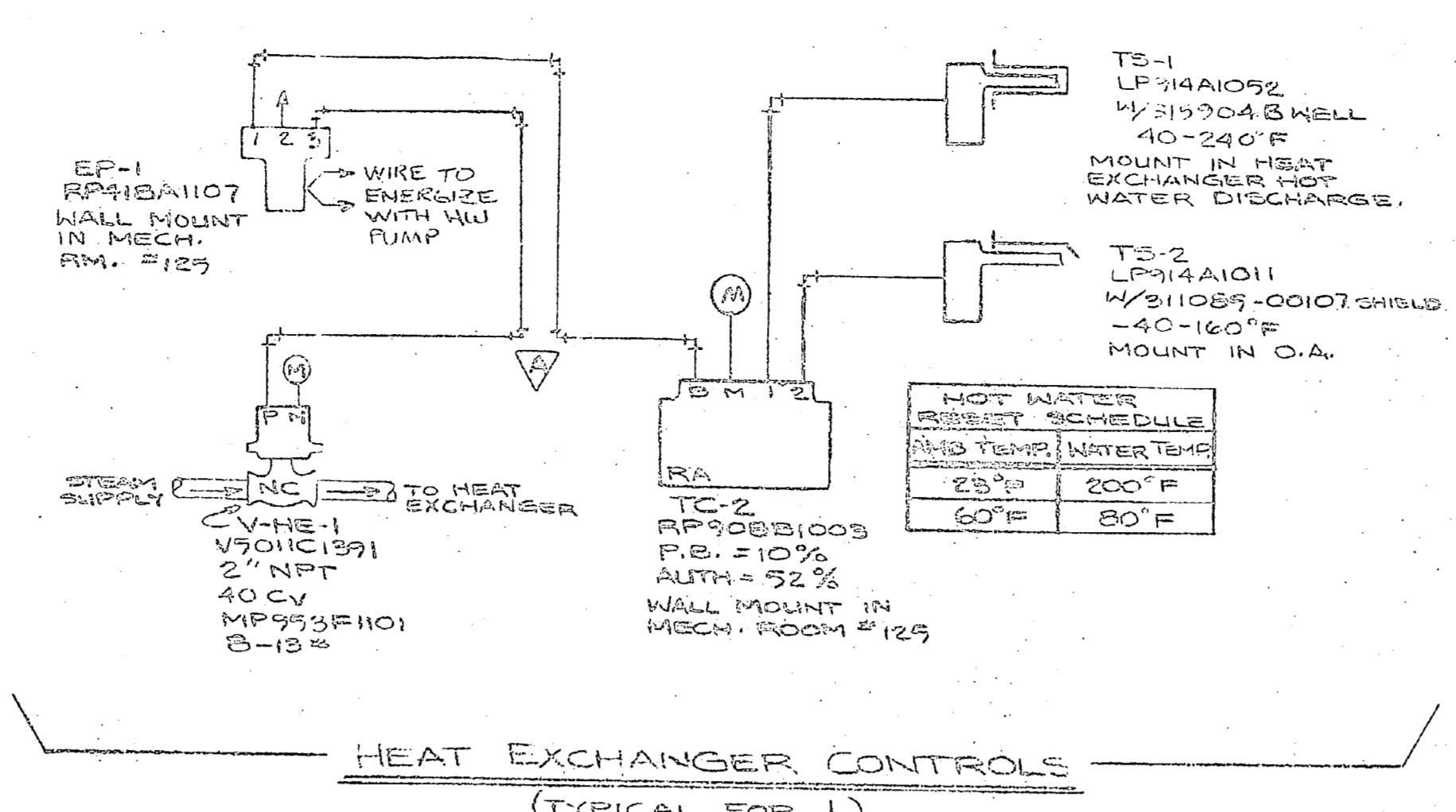
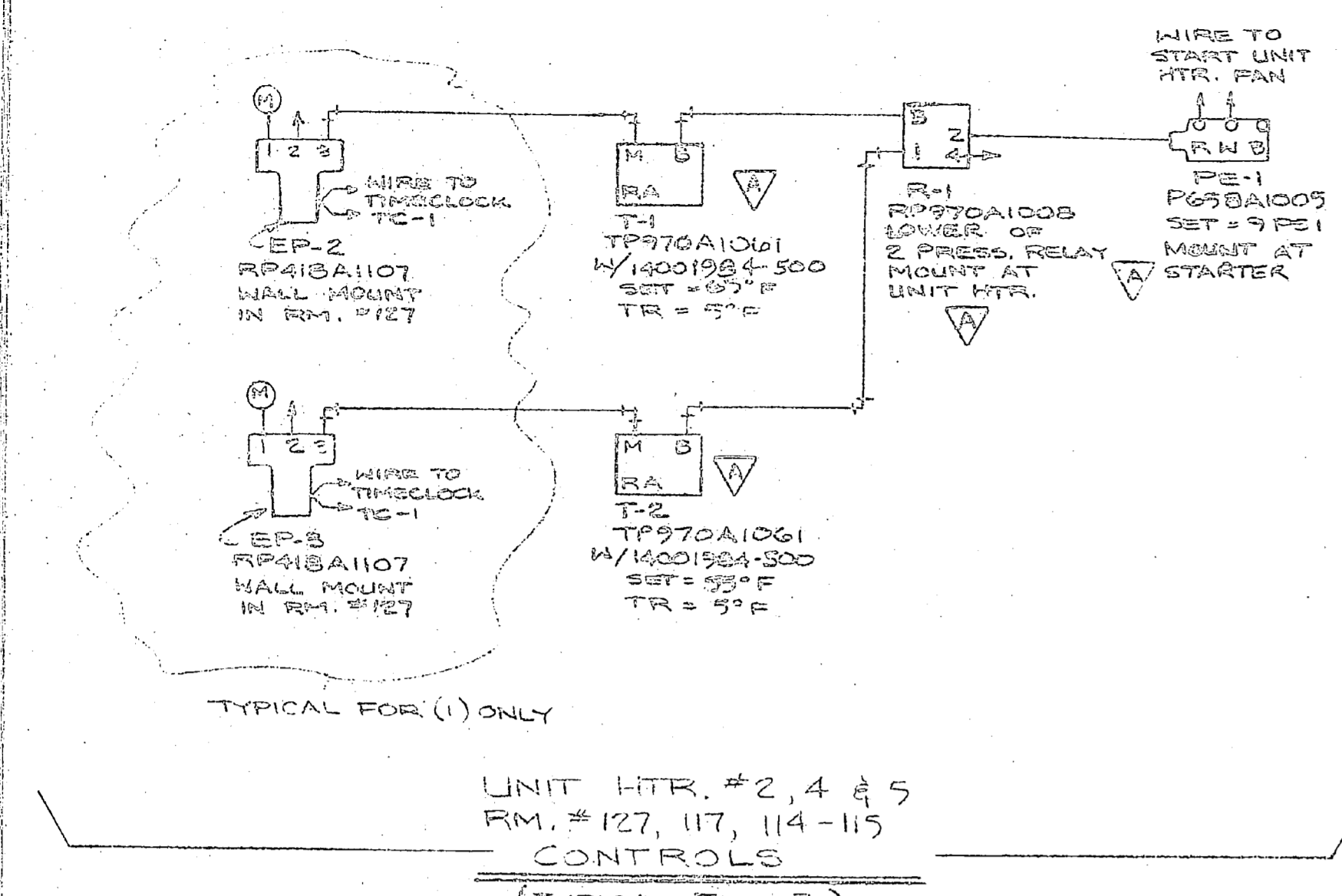
MOUNT IN ROOM # 125

THIS IS THE LATEST REVISION TO THIS DRAWING, DESTROY ALL PREVIOUS ISSUES. MAY 9 1963

ARCHITECT: NAVAL FACILITIES
 ENGINEER: NAVAL FACILITIES
 CONTRACTOR: SNEDECOR, INC.
 APPLICATION ENGINEER: NELSON GATES

HONEYWELL INC.				
C				5175 SHARON AVENUE RD., CHARLOTTE, N.C. 28211
B				
A	LOCATED RTD-5	1/18/63	CNC	FIELD MAINTENANCE SHOP
Region		Date	Appd.	MAIN SERVICE ROAD
Supervised by	Drawn By: P. H. H.	Date: 11-19-62		CAMP LEJUNE, N.C.
Supervised by	Approved by: C. H.	Sheet 5 of 6	DRAWING NUMBER 929-82616-5XI	

RECEIVED
JAN 20 1954
U.S. AIR FORCE
OFFICE OF THE
SECRETARY OF THE AIR FORCE
WASHINGTON, D.C.



Section of Operation for Unit Heaters #1, 2, 3, 4, 5
 When thermostat call starts and stop the unit heater is maintained the desired temperature during the day. At night, unit heaters will be started by the master air limit thermostat.
 Section of Operation for Unit Heaters #1, 2, 3, 4, 5
 When thermostat call starts unit heaters will start to maintain the desired temperature.
 Section of Operation for Hot Water Pump and H.W. Pump
 H.W. Pump will be started when any call is on and the temperature is below the setpoint. When H.W. Pump is on, the call will be satisfied and the temperature will rise to the setpoint. The H.W. Pump will stop when the temperature reaches the setpoint.
 Section of Operation for Exh. Fan and H.W. Pump
 Exh. Fan will start when the thermostat call is on and the temperature is below the setpoint. The Exh. Fan will stop when the temperature reaches the setpoint.
 Section of Operation for EF #3, 4, 6, 7, 10, 11, 12
 The unit heater damper will start when the thermostat call is on and the temperature is below the setpoint. The damper will stop when the temperature reaches the setpoint.

LEGEND:
 [Symbol] = MOUNT IN DTC PANEL
 [Symbol] = TERMINAL IN DTC PANEL
 N.B.H. = NOT BY HONEYWELL

THIS IS THE LATEST REVISION TO THIS DRAWING. DESTROY ALL PREVIOUS ISSUES. MAY 1, 1983

ARCHITECT: NAVA FACILITIES
 ENGINEER: NAVA FACILITIES
 CONTRACTOR: SHEDDEN, INC.
 APPLICATION ENGINEER: NELSON GATES

HONEYWELL, INC.		SITE: SHARON ARMY FLD., CHARLOTTE, N.C. 28211	
1	DESIGN LOCATION	1/10/83	CNE
2	REVISION	1/10/83	CNE
3	DATE	1/10/83	CNE
4	APPROVED BY	DATE	1/10/83
5	APPROVED BY	DATE	1/10/83
6	APPROVED BY	DATE	1/10/83
7	APPROVED BY	DATE	1/10/83
8	APPROVED BY	DATE	1/10/83
9	APPROVED BY	DATE	1/10/83
10	APPROVED BY	DATE	1/10/83
11	APPROVED BY	DATE	1/10/83
12	APPROVED BY	DATE	1/10/83
13	APPROVED BY	DATE	1/10/83
14	APPROVED BY	DATE	1/10/83
15	APPROVED BY	DATE	1/10/83
16	APPROVED BY	DATE	1/10/83
17	APPROVED BY	DATE	1/10/83
18	APPROVED BY	DATE	1/10/83
19	APPROVED BY	DATE	1/10/83
20	APPROVED BY	DATE	1/10/83
21	APPROVED BY	DATE	1/10/83
22	APPROVED BY	DATE	1/10/83
23	APPROVED BY	DATE	1/10/83
24	APPROVED BY	DATE	1/10/83
25	APPROVED BY	DATE	1/10/83
26	APPROVED BY	DATE	1/10/83
27	APPROVED BY	DATE	1/10/83
28	APPROVED BY	DATE	1/10/83
29	APPROVED BY	DATE	1/10/83
30	APPROVED BY	DATE	1/10/83
31	APPROVED BY	DATE	1/10/83
32	APPROVED BY	DATE	1/10/83
33	APPROVED BY	DATE	1/10/83
34	APPROVED BY	DATE	1/10/83
35	APPROVED BY	DATE	1/10/83
36	APPROVED BY	DATE	1/10/83
37	APPROVED BY	DATE	1/10/83
38	APPROVED BY	DATE	1/10/83
39	APPROVED BY	DATE	1/10/83
40	APPROVED BY	DATE	1/10/83
41	APPROVED BY	DATE	1/10/83
42	APPROVED BY	DATE	1/10/83
43	APPROVED BY	DATE	1/10/83
44	APPROVED BY	DATE	1/10/83
45	APPROVED BY	DATE	1/10/83
46	APPROVED BY	DATE	1/10/83
47	APPROVED BY	DATE	1/10/83
48	APPROVED BY	DATE	1/10/83
49	APPROVED BY	DATE	1/10/83
50	APPROVED BY	DATE	1/10/83
51	APPROVED BY	DATE	1/10/83
52	APPROVED BY	DATE	1/10/83
53	APPROVED BY	DATE	1/10/83
54	APPROVED BY	DATE	1/10/83
55	APPROVED BY	DATE	1/10/83
56	APPROVED BY	DATE	1/10/83
57	APPROVED BY	DATE	1/10/83
58	APPROVED BY	DATE	1/10/83
59	APPROVED BY	DATE	1/10/83
60	APPROVED BY	DATE	1/10/83
61	APPROVED BY	DATE	1/10/83
62	APPROVED BY	DATE	1/10/83
63	APPROVED BY	DATE	1/10/83
64	APPROVED BY	DATE	1/10/83
65	APPROVED BY	DATE	1/10/83
66	APPROVED BY	DATE	1/10/83
67	APPROVED BY	DATE	1/10/83
68	APPROVED BY	DATE	1/10/83
69	APPROVED BY	DATE	1/10/83
70	APPROVED BY	DATE	1/10/83
71	APPROVED BY	DATE	1/10/83
72	APPROVED BY	DATE	1/10/83
73	APPROVED BY	DATE	1/10/83
74	APPROVED BY	DATE	1/10/83
75	APPROVED BY	DATE	1/10/83
76	APPROVED BY	DATE	1/10/83
77	APPROVED BY	DATE	1/10/83
78	APPROVED BY	DATE	1/10/83
79	APPROVED BY	DATE	1/10/83
80	APPROVED BY	DATE	1/10/83
81	APPROVED BY	DATE	1/10/83
82	APPROVED BY	DATE	1/10/83
83	APPROVED BY	DATE	1/10/83
84	APPROVED BY	DATE	1/10/83
85	APPROVED BY	DATE	1/10/83
86	APPROVED BY	DATE	1/10/83
87	APPROVED BY	DATE	1/10/83
88	APPROVED BY	DATE	1/10/83
89	APPROVED BY	DATE	1/10/83
90	APPROVED BY	DATE	1/10/83
91	APPROVED BY	DATE	1/10/83
92	APPROVED BY	DATE	1/10/83
93	APPROVED BY	DATE	1/10/83
94	APPROVED BY	DATE	1/10/83
95	APPROVED BY	DATE	1/10/83
96	APPROVED BY	DATE	1/10/83
97	APPROVED BY	DATE	1/10/83
98	APPROVED BY	DATE	1/10/83
99	APPROVED BY	DATE	1/10/83
100	APPROVED BY	DATE	1/10/83

RECEIVED
JAN 20 1954
U.S. AIR FORCE
OFFICE OF THE
SECRETARY OF THE AIR FORCE
WASHINGTON, D.C.